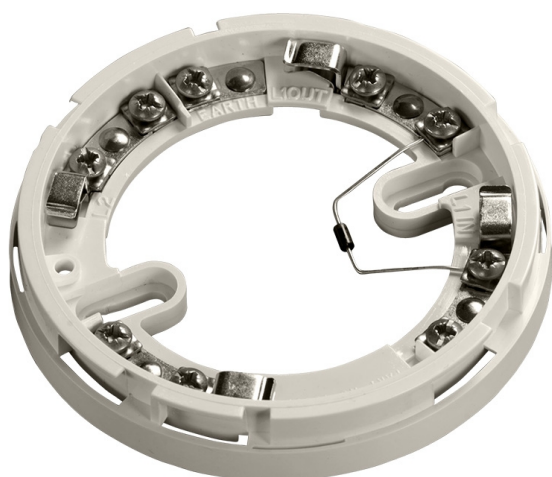


45681-201APO

Apollo Series 65 base with diode



Overview

Compatible with all Apollo Series 65 detectors.

Designed for use with conventional systems that have manual call points and detector bases on the same circuit.

Third-party certified to the relevant parts of EN54 in conjunction with Apollo's Series 65 detectors.

Fitted with a schottky diode on the L1 IN and L1 OUT wiring terminals.

One way fit.

Technical Specifications

Approvals/certifications	Certified to the relevant parts of EN54 by the LPCB as part of Apollo's Series 65 range.
Application/operation	TBC.
Alarm reset voltage	TBC.
Construction & finish	White polycarbonate V.O in accordance with UL94. Nickel plated stainless steel terminals.



IP Rating	IP23D.
Dimensions	100mm diameter x H 15mm.
Weight	48g.



T 01942 322744 E sales@c-tec.co.uk
F 01942 829867 W www.c-tec.com



C-TEC, Challenge Way, Martland Park, Wigan, WN5 0LD United Kingdom



T 01942 322744 E sales@c-tec.co.uk
F 01942 829867 W www.c-tec.com



C-TEC, Challenge Way, Martland Park, Wigan, WN5 0LD United Kingdom