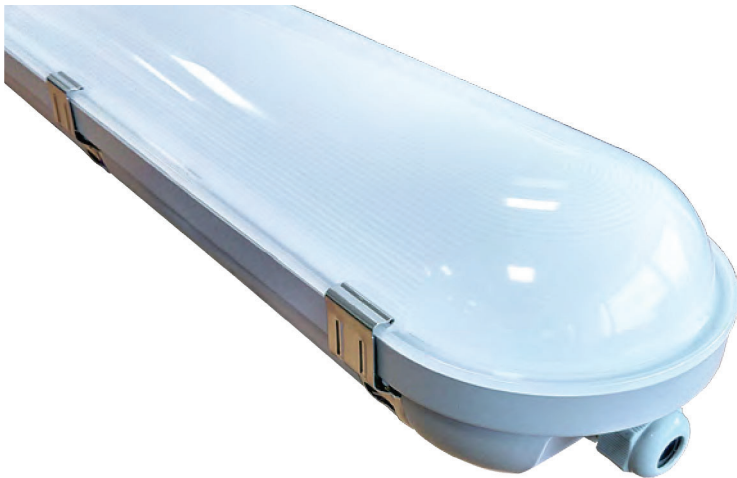


Hilton Non-Corrosive 32W/40W

1200mm (4ft) 4185lm/5160lm



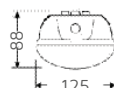
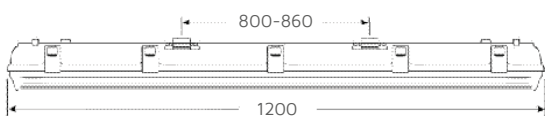
Features

- 1-10V Dimming
- Dual Wattage driver allows a choice between 32W or 40W at the time of installation
- IP65 rated housing - protected against dust and water
- Tamper-proof stainless steel clips as standard
- Easy-mounting clips
- High lumens per watt



Compatible Accessories

Batten/NCF Suspension Kit	NET-46-16-04	Page 218
20mm Microwave Motion Sensor	NET-42-43-20	Page 205
Merrytek IP65 Microwave Sensor	NET-42-43-33	Page 203



All units are in mm

KEY DATA

Power	32W/40W
Luminous Flux	4185lm/5160lm
Colour Temperature	5500K
IP Rating	IP65
Dimensions	1200 x 125 x 88mm
Warranty	5 Years (Registration Required)

Part Number STD **NET-43-11-03**

Part Number EM **NET-43-12-03**

TECHNICAL SPECIFICATIONS

Input Voltage AC	220-240V
Power Factor	>0.9
Luminaire Efficacy	132lm/W
LED Manufacturer	Honglitronic
LED Type	SMD 2835
No. of LEDs	216
Driver Manufacturer	BOKE
Driver Output Voltage DC	30-42V
Total Circuit Power (W)	32W/40W +/- 5W
Electrical Class	3
Colour Rendering	>80 CRI
Lamp Viewing Angle	120°
Dimmable	1-10V Dimming
Flicker Free	Yes
Operating Temp.	-15°C to +45°C
Lifespan _{LM80}	43,000 Hours
Fire Rating	V2
UGR Rating	More than 19
Diffuser Material	Polycarbonate
Housing Material	Polycarbonate
Housing Colour	Grey
Weight	2.15Kg
Manufacturer	Sochii Lighting

EMERGENCY SPECIFICATIONS

Emergency Operation	>3H
Battery Pack	LiFePO4
Emergency Pack	Streamer
Emergency Kit	3 Year Warranty
Operating Temp.	0°C to +45°C
Luminous Flux Factor	13.2%/8.25%

Typically Replaces

- 2 x 36W T8 fluorescents
- 2 x 28W T5 fluorescents