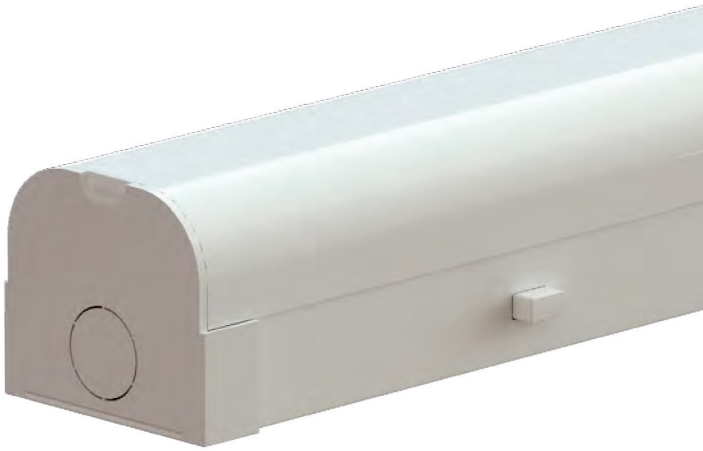


Foxton Batten 22W

1500mm (5ft) 3090lm



powered by
TRIDONIC

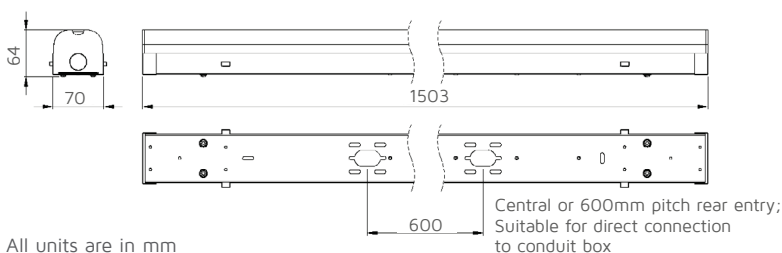
Features

- Selectable 3000K, 4000K or 5500K colour temperature via switch
- Rear and end cable entry options
- Simple clip design for easy installation
- Flat end allows for end-to-end light designs



Compatible Accessories

Batten/NCF Suspension Kit	NET-46-16-04	Page 218
20mm Microwave Motion Sensor	NET-42-43-20	Page 205



KEY DATA

Power	22W
Luminous Flux	2960lm/3090lm/3080lm
Colour Temperature	3000K/4000K/5500K
IP Rating	IP20
Dimensions	1503 x 70 x 64mm
Warranty	5 Years (Registration Required)

Part Number STD **NET-43-11-93**

Part Number EM **NET-43-11-94**

TECHNICAL SPECIFICATIONS

Input Voltage AC	220-240V
Power Factor	>0.9
Luminaire Efficacy	140lm/W
LED Manufacturer	Yuanlei
LED Type	SMD 2835
No. of LEDs	364
Driver Manufacturer	Tridonic Advanced Series
Driver Output Voltage DC	30-54V
Total Circuit Power (W)	22W +/- 2W
Electrical Class	1
Colour Rendering	>80 CRI
Lamp Viewing Angle	120°
Dimmable	No
Flicker Free	No
Operating Temp.	0°C to +45°C
Lifespan _{LM80}	50,000 Hours
Fire Rating	V2
UGR Rating	More than 19
Diffuser Material	Polycarbonate
Housing Material	Steel
Housing Colour	White
Weight	1.56Kg
Manufacturer	Sochii Lighting

EMERGENCY SPECIFICATIONS

IP Rating	IP20
Emergency Operation	>3H
Battery Pack	LiFePO4
Emergency Pack	Streamer
Emergency Kit	3 Year Warranty
Operating Temp.	0°C to +45°C
Luminous Flux Factor	15%

Typically Replaces

- 1 x 58W T8 fluorescent
- 1 x 35W T5 fluorescent