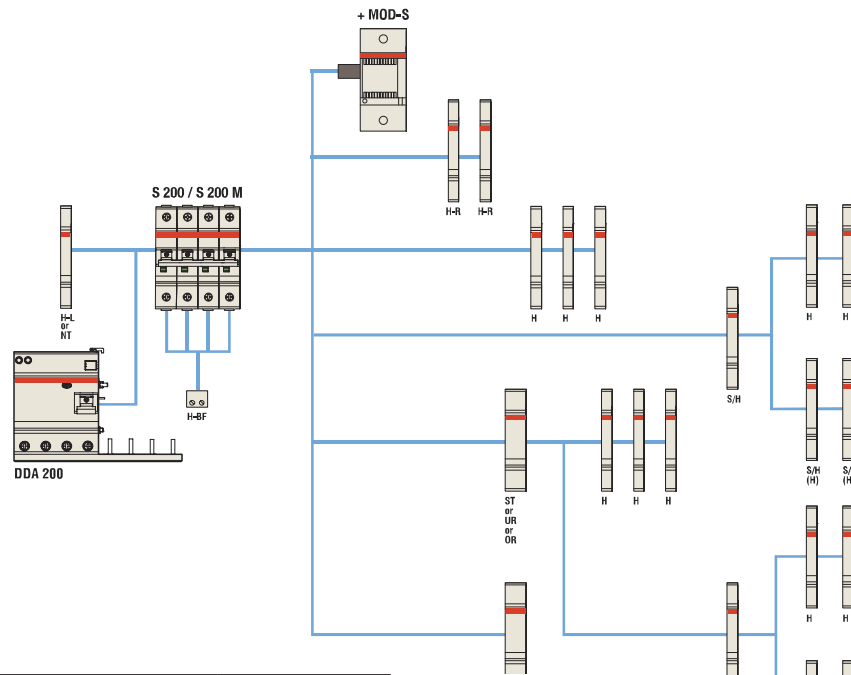


System ProM compact Accessories overview

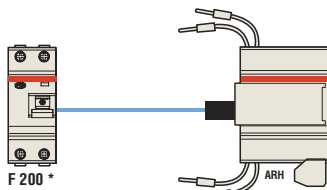
Combination of auxiliary elements with
S200, DDA200 + S200 or DS200



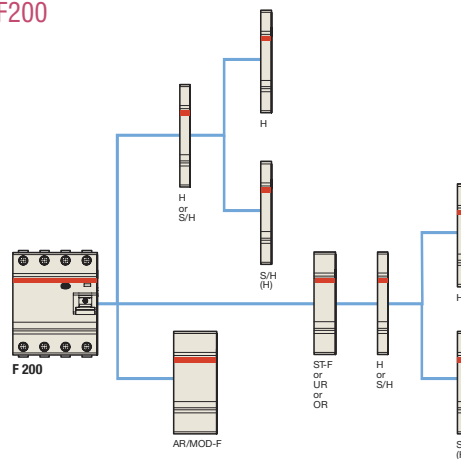
H	Auxiliary contact	SC2-H6R
H-R	Auxiliary contact	SC2-H6-...R
S/H	Signal/ Auxiliary contact	SC2-S/H6R
S/H (H)	Signal/ Auxiliary contact used as auxiliary contact	SC2-S/H6R
ST	Shunt trip for S200 MCB	S2C-A
OR	Over voltage release	S2C-OVP
H-L	Auxiliary contact for S200 MCBs mounted on left side	SC2-H...L
H-BF	Auxiliary contact for S200 MCBs Bottom fitting (i for each pole of MCB)	SC2-H01/SC2-H10
BP	Mechanical tripping device	SC2-BP
NT	Switched neutral	SC2-Nt

In case of using rotary operating mechanism S2C-DH (only right side mountable) the auxiliary devices left side and bottom fitting auxiliary contact could be used.

Combination of home automatic
resetting unit with F200



Combination of auxiliary elements
with F200



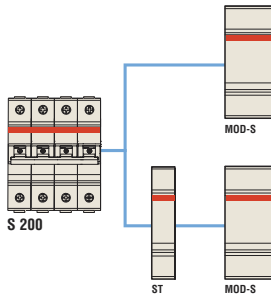
ARH	Home automatic resetting unit	FC2-ARH
-----	-------------------------------	---------

* F 202 30 mA or 100 mA (depending on ARH model), max 63 A

H	Auxiliary contact	SC2-H6R
S/H	Signal/ Auxiliary contact	SC2-S/H6R
S/H (H)	Signal/ Auxiliary contact used as auxiliary contact	SC2-S/H6R
UR	Undervoltage release	S2C-UA
OR	Over voltage release	S2C-OVP
AR	Auto reclosing unit	FC2-ARI
MOD-F	Motor operating device	F2C-CM
ST-F	Shunt trip for F200 RCCB	F2C-A

System ProM compact Accessories overview

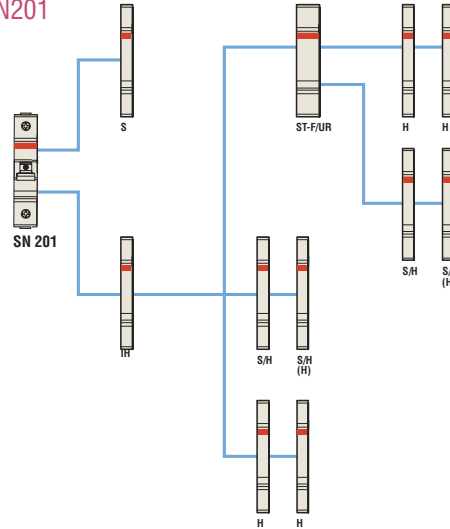
Combination of S200 with motor operating device



MOD-S*	Motor operating device	SC2-CM
ST	Shunt trip for S200 MCBs	SC2-A...

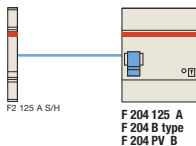
* in case of using S 200 coupled with DDA 200, MOD-S doesn't operate in case of earth-leakage fault

Combination of auxiliary elements with SN201



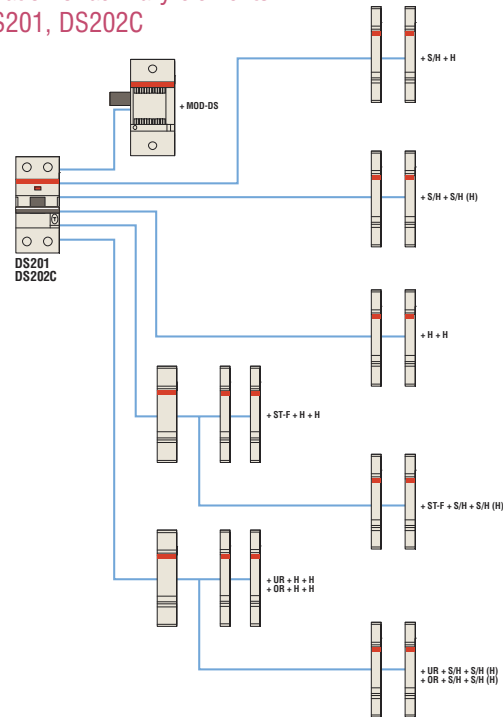
IH	Coupling interface/auxiliary contact	S201-1H
S	Signal contact	SN201-S
H	Auxiliary contact	SC2-H6R
S/H	Signal/ Auxiliary contact	SC2-S/H6R
S/H (H)	Signal/ Auxiliary contact used as auxiliary contact	SC2-S/H6R
ST-F	Shunt trip for F200 RCCB	F2C-A
UR	Undervoltage release	S2C-UA

Combination of auxiliary elements with F204 125 Type A, PV B



F2-125A-B-S/H	Signal/ Auxiliary contact
---------------	---------------------------

Combination of auxiliary elements with DS201, DS202C

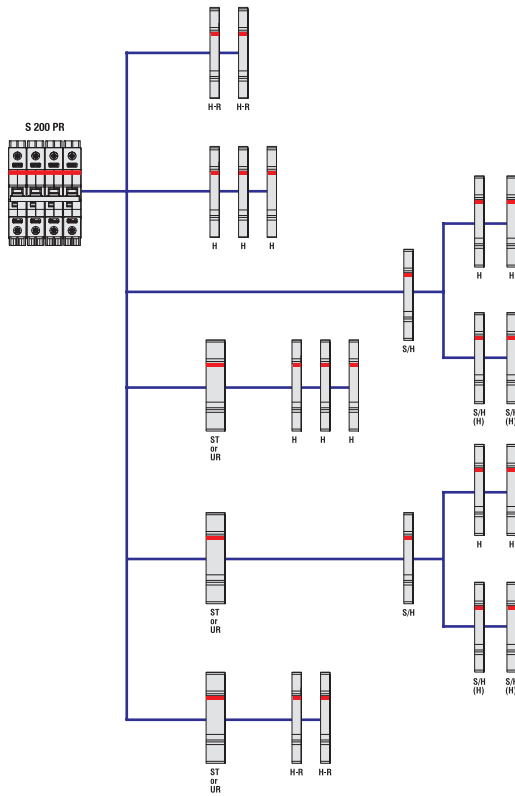


H	Auxiliary contact	SC2-H6R
S/H	Signal/ Auxiliary contact	SC2-S/H6R
S/H (H)	Signal/ Auxiliary contact used as auxiliary contact	SC2-S/H6R
ST-F	Shunt trip for F200 RCCB	F2C-A
UR	Undervoltage release	S2C-UA
OR	Over voltage release	S2C-OVP
MOD-DS	Motor operating device	DS2C-CM

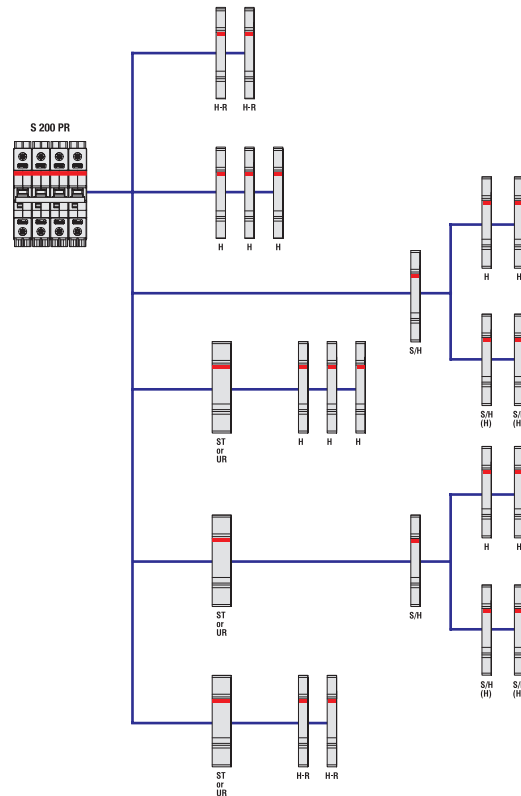
System ProM compact

Accessories overview

Combination of auxiliary elements with S 200 PR



Combination of auxiliary elements with SU 200 PR



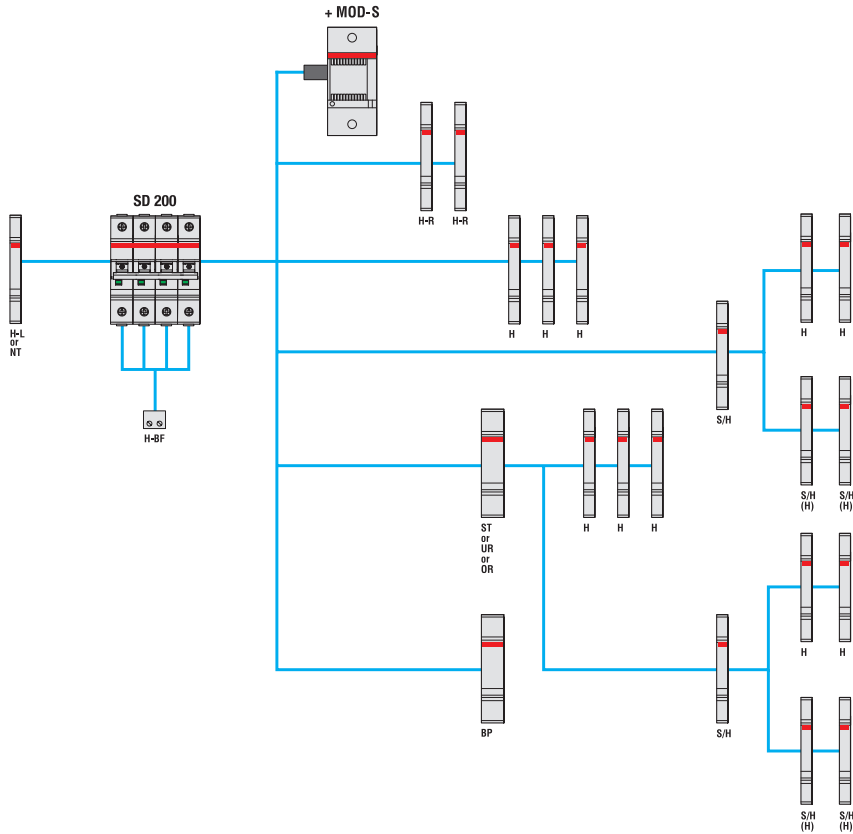
H	Auxiliary contact	S2C-H6R
H-R	Auxiliary contact	S2C-H6-...R
S/H	Signal/Auxiliary contact	S2C-S/H6R
S/H (H)	Signal/Auxiliary contact used as auxiliary contact	S2C-S/H6R
ST	Shunt trip	S2C-A...
UR	Undervoltage release	S2C-UA

H	Auxiliary contact	S2C-H6RU
S	Signal contact	S2C-S/H6RU
ST	Shunt trip	S2C-A...U

System ProM compact

Accessories overview

Combination of auxiliary elements with SD 200



H	Auxiliary contact	S2C-H6R
H-R	Auxiliary contact	S2C-H6-...R
S/H	Signal/Auxiliary contact	S2C-S/H6R
S/H (H)	Signal/Auxiliary contact used as auxiliary contact	S2C-S/H6R
NT	Switched neutral	S2C-NI
MOD-S	Motor operating device	S2C-CM
OR	Overvoltage release	S2C-OVP
BP	Mechanical tripping device	S2C-BP
ST	Shunt trip	S2C-A...
UR	Undervoltage release	S2C-UA