



COLLINGWOOD
LIGHTING



FEATURES & BENEFITS

- > Low glare
- > Only 16W
- > Life of LED: 70,000hrs (L70, B10)
- > Flexible driver position for easy installation
- > Brighter than a 75W AR111 halogen and 50W halogen. Ideal for high ceilings
- > Wide beam for even illumination. Allows for greater spacing between luminaires

H5 1000 Symmetric

Low glare fire-rated LED downlight



Suitable for use in bathrooms



Loop in/out push-fit connector available



Flicker-free



7-year extended warranty available



* IP65 (front) / IP20 (back) | * Ceiling only | Patent information: collingwoodlighting.com/patent

ZONE L70, B10

3SDCM

PHOTOMETRICS @ 25°C

Colour	Beam	Finish	Product code	Product code	CRI	lm	lm/W	lx at 1m
4000K	80°	B / steel	DL292BSNW	DLT292BSNW	>80Ra	980	61	1030
	80°	Gloss white	DL292WHNW	DLT292WHNW	>80Ra	980	61	1030
3000K	80°	B / steel	DL292BSWW	DLT292BSWW	>80Ra	960	60	970
	80°	Gloss white	DL292WHWW	DLT292WHWW	>80Ra	960	60	970

GENERAL

Building regulations	Part B (fire protection), C (moisture protection), E (acoustic protection), P (electrical safety) and L (conservation of energy - 2014 regulations)
Construction material	Mild steel / aluminium
Flicker free	Yes
Inrush current	20A 0.05ms
Maximum ceiling thickness	40mm

WIRING

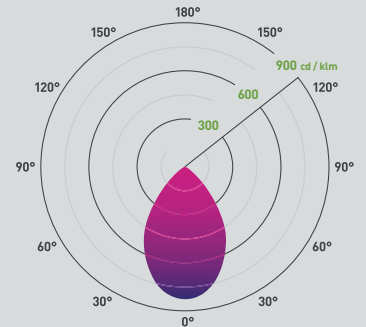
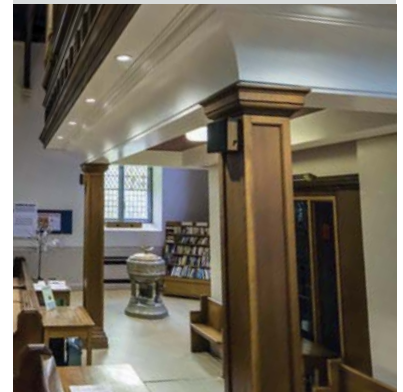
Cable / flying lead	0.15m (Class II)
Cable required for 'T' Connector	Push-fit terminal for: Twin & Earth (6242Y 2x1.5mm ²) or 3-core cable (R02V 3x1.5mm ²)
Type of wiring required	Parallel (mains) 220-240V AC 50/60Hz

LED DRIVERS

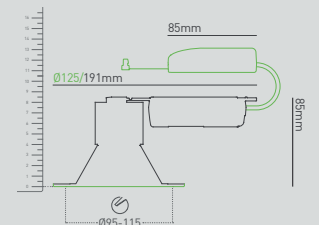
Product code	Input voltage	Input current	Power factor	Dimming	Bathroom zone
N/A (integrated SELV driver)	220-240V	-	>0.95	Yes (mains)	1 (ceiling only)

ACCESSORIES

Product code	Description	
DLCONVERT98	Converter plate	81
LEDEP360	3hr emergency pack (not compatible with 'T' version)	87
14800121 (SPOTCLIP-III)	Insulation cover cap for recessed downlights	83
DM298GRID	LED mains grid dimmer	82
DM298FP	Faceplate dimmer	82



4000K 80°
Additional diagrams available at collingwoodlighting.com



This luminaire contains built-in LED lamps.

The lamps cannot be changed in the luminaire.

LED

874/2012