



# TV Mounts, Stands & Accessories

Connecting with Technology

# Contact us

## UK Sales:

Tel: +44 (0) 1952 238 100

Fax: +44 (0) 1952 238 180

Email: [uk\\_sales@nexusinds.com](mailto:uk_sales@nexusinds.com)

Nexus Industries Ltd, Nexus Distribution Centre  
Stafford Park 1, Telford, Shropshire, England, TF3 3BD

## European Sales:

Tel: +49 40 89066 8780

Fax: +49 40 89066 87829

Email: [eu\\_sales@nexusinds.com](mailto:eu_sales@nexusinds.com)

Nexus Industries GmbH, Holstenplatz 20b  
22765, Hamburg, Germany

## French Sales:

Tel: +33 (0)7 88 29 56 59

Fax: +33 (0)1 5731 74 19

Email: [fr\\_sales@nexusinds.com](mailto:fr_sales@nexusinds.com)

Luceco SAS France & Belux, 3 Rue de Courtalin  
Magny Le Hongre 77700, FRANCE & BELUX

## Middle East Sales:

Tel: +971 4 2500 636

Fax: +971 4 2500 603

Email: [mea\\_sales@nexusinds.com](mailto:mea_sales@nexusinds.com)

Nexus Mid East Electrical LLC, Office 806, Makateb Building  
Port Saeed, Deira, P O Box 118704, Dubai, UAE

## Asia Sales:

Tel: +86 (0) 573 8357 0200

Fax: +86 (0) 573 8357 0248

Email: [sales@nexus.cn](mailto:sales@nexus.cn)

No 1438, Jiachuang Road, Xiuzhou Industrial Park  
Jiaxing, Zhejiang, China, P.C. 314031

## North & South America Sales:

Tel: +1 281 978 2509

Fax: +1 281 466 4620

Email: [us\\_sales@nexusinds.com](mailto:us_sales@nexusinds.com)

Luceco Inc, 11050 W Little York Road  
Building C-2, Houston, TX 77041, USA

## Technical Support:

Tel: 0845 194 7584

Email: [technical@nexusinds.com](mailto:technical@nexusinds.com)

Lines open Monday to Friday 8.30am to 5pm,  
with answer phone service outside these hours.

## Head Office:

Email: [info@nexusinds.com](mailto:info@nexusinds.com)

Nexus Industries Ltd, Caparo House  
103 Baker Street, London, W1U 6LN

## Website:

For further information and other literature items  
please visit [www.ross.uk](http://www.ross.uk)



## TV Mounts

09-24

Neo Series	09
Classic Series	17
Essential Series	21



Image by Alexey Nikolashin



**AV Accessories**  
25-34



**TV Floor Stands**  
35-40



**Home Entertainment Accessories**  
40-49

Desk Mounts	26
Ceiling Mounts	27
Projector Mounts	28
AV shelves	29
AV Racks	31
Speaker Mounts	32
TV Accessories	33
Kitchen Solutions	34

Slimline	36
Corner	37
Prestige	38
Oval	39
Linear	40

HDMI	42
SCART	43
Audio	44
USB	45
Coax	46
Reception & Distribution	47
F/Satellite	48
Care	49



# In House Manufacturing

The Ross range of TV wall mounts and accessories is manufactured at our group factory in China - Nexus Jiaying Limited.

Nexus Industries fully understands our customers' requirements. We offer a combination of British product design and marketing with high quality, low cost production to give solutions for our customers.

Dealing with Nexus Industries to buy Ross products has many benefits:



**Quality Assurance** - Full BSI accreditation and corporate social responsibility bring security and peace of mind when purchasing from Nexus. Our factory has been successfully audited by many of Europe's top retailers.



**Compliance Testing** - Our on-site laboratory certified to ISO9001 meets internationally approved safety standards. All our products are tested to meet all the internationally recognised quality standards including UL, TUV and RoHS.



**Product Development** - In-house production engineering, product design and tool making deliver rapid product development to the market.



**Cost Control** - We ensure the best value to you, our customer, by driving down third party costs and manufacturing all parts in house.



**Logistics** - Flexibility in production and stock holding offers improved lead times and service to our business partners. We can supply to customers direct from our factory in china, or from warehouse stock in the UK.

# About Ross

Ross is an integral part of the Nexus Industries group. Other brands include BG Electrical, Masterplug and Luceco, together they provide a 'One Stop Shop' offer for accessories. With over 60 years of experience in the manufacture and distribution of electrical accessories Nexus has gained an enviable reputation.

**Comprehensive Product Range** - Continuous product development to meet market & customer needs.

**Style & Function** - Our products combine modern styling with easy to install features such as spirit level installation, protective pads and quick release systems.

**Quality & Reliability** - All products manufactured to the latest British Standards, and the company is ISO9001:2008, BSI approved. Our manufacturing site has gained ISO 14001:2004 approval for its environmental management system.

**Central Distribution Warehouse Facility** - 10,000m<sup>2</sup> warehousing, with next-day delivery service.

**High Levels of Customer Service, Care & Support** - Our friendly and professional sales and technical teams are there to support customer's requirements. Together with EDI trading technology, and advanced supply chain management, we strive to ensure high levels of service.



# Ethical Policy

**Nexus Industries has an overriding obligation to the welfare of workers within its own manufacturing facility and supply chain.**

Nexus uses the Ethical Trading Initiative (ETI) Base Code as its standard for its own manufacturing operation and all primary suppliers across all our businesses.

The code states:

- Employment is freely chosen
- Freedom of association and the right to collective bargaining are respected
- Working conditions are safe and hygienic
- Child labour shall not be used
- Living wages are paid
- Working hours are not excessive
- No discrimination is practised
- Regular employment is provided
- No harsh or inhumane treatment is allowed



# Sustainability

**Nexus Industries believes that we have a responsibility to care for and protect the environment in which we operate. We are fully committed to improving environmental performance across all of our manufacturing and other business activities.**

To this end it is our policy to source and manufacture products which comply with the following EU directives (where applicable) to ensure that our environment is protected;  
Directive 2011/65/EU - RoHS (Restriction of Hazardous Substances)

Directive 2006/121/EC - REACH (Registration, Evaluation and Authorisation of Chemicals)

In addition, we will ensure that all products sold are disposed of in a responsible manner.

To facilitate this, Nexus Industries carries a valid registration with a notified service provider for compliance with the Directive 2002/96/EC - WEEE (Waste Electrical and Electronic Equipment).

Nexus Industries will endeavour to communicate these policies to all members of staff with the express purpose of assisting in the procurement and sourcing of raw materials, sourcing of finished goods, and disposal of company waste.

We continually aim to reduce our environmental impact from both products and activities. We are always looking for new methods and materials to provide environmentally friendly solutions.



# Certification and Testing

Independently  
certified by

**SGS**

The “Independently certified by SGS” logo is applied to products that have been sent to SGS, an independent third-party testing organisation, and have passed their rigorous and thorough testing procedures to ensure optimal performance, structural integrity and reliability. At Ross we pride ourselves on creating quality products that are not only functional but also safe and reliable. The team at SGS work on your behalf to ensure our products meet the required standard each and every time. The mark is a symbol of quality and gives you, the customer, peace of mind that our products will not let you down.

## UL Certification

UL is a global independent safety science company with more than a century of expertise innovating safety solutions from the public adoption of electricity to new breakthroughs in sustainability, renewable energy and nanotechnology. Dedicated to promoting safe living and working environments, UL helps safeguard people, products and places in important ways, facilitating trade and providing peace of mind. We are proud to utilise UL as an additional testing and safety standards partner and fully adhere to all UL standards regarding AV wall mounts.



## In House Testing

In addition to external third party testing and standards to which we comply, we also undertake our own vigorous internal testing procedures at every step of the design, prototype and production stages of bringing our products to market. Our dedicated QC team's mission is to ensure top notch performance, reliability and safety for all of our valued customers. They undertake a plethora of testing methods including overload testing and cycle testing. Only when they are happy that the products meet our exacting standards will they sign them off and release to third party testing programs and laboratories.



# VESA

## What is VESA?

VESA (Video Electronics Standards Association) is a professional organisation made up of a group of video electronics professionals and companies that review new technology proposals and develop sets of standards to promote uniformity in the consumer electronics industry.

## What are VESA mount standards?

VESA has developed a set of standards for the manufacturing of flat screen televisions and monitors. Most manufacturers comply with this standard by adhering to an industry wide hole pattern on the back of the TV or monitor for mounting purposes. The VESA hole pattern for flat panel displays can be one of the following sizes:

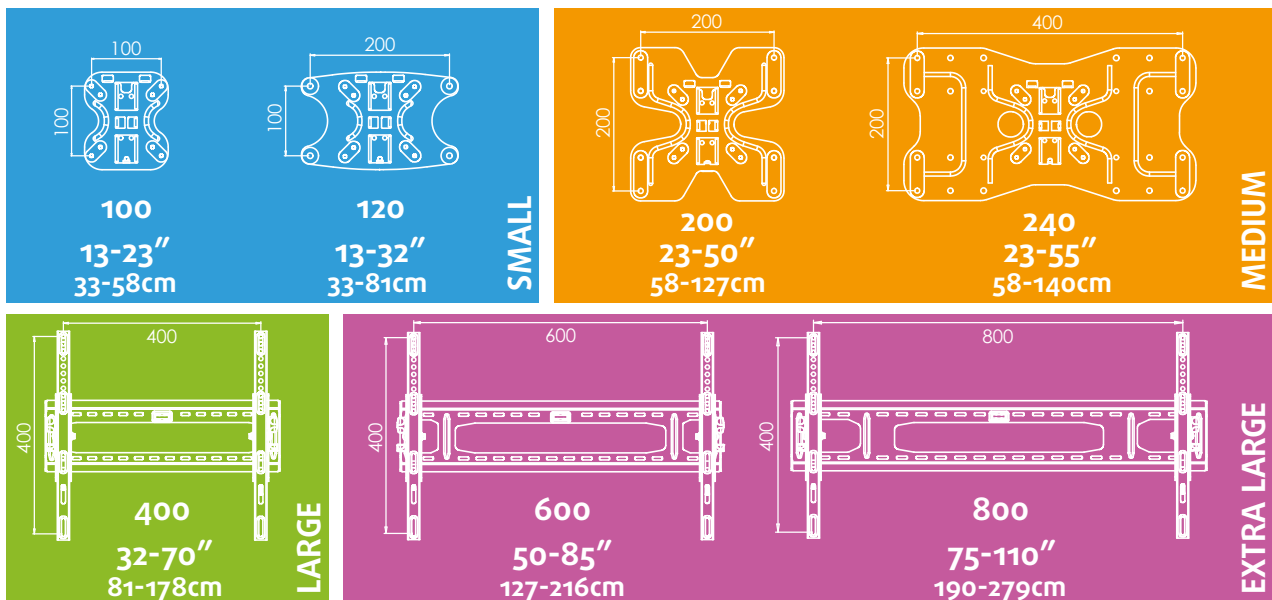
- 75mm x 75mm
- 100mm x 100mm
- 200mm x 100mm
- 200mm x 200mm
- 400mm x 200mm
- 400mm x 400mm
- 600mm x 400mm
- 800mm x 400mm



All Ross brackets conform to one if not multiple versions of the VESA standards listed above. Simply take a look in your TV's instruction manual, web support page or even have a look at the spacing of the holes on the back of the TV itself to select the correct size for you.

## VESA Size and Colour Coding System

VESA is an industry standard mounting system for flat-screen televisions. Ross TV wall mounts are available in a range of VESA sizes to suit almost any mounting situation. Each mount's VESA compatibility is shown on the product packaging with simple universal icons and range compatibility tables, as well as colour - coded pack artwork.



# TV Mount Ranges

## NEO

Neo is an innovative range of TV mounts offering user-pleasing features that add value and raise the product above the ordinary. Features include integrated spirit levels, quick-release adjustment features and unique 'Neo' soft pad TV protectors.



## CLASSIC

The Classic Series of TV mounts offer a range of functional formats to suit every customer need and are enhanced by attractive design features such as moulded wall-plate covers.



## Essentials

The Essentials Series is a range of simple, no-fuss TV mounts that offer fully-featured, easy to use functionality at price points that represent excellent value for money.



All ranges offer articulation and adjustment options to suit the preference of each customer and each mounting situation - **flat to wall, tilt and turn** or the ultimate flexibility of **full motion**. They are available in a range of sizes to mount virtually any flat screen TV.

### Flat to Wall



- Simple, elegant picture-style mounting.
- Low profile designs mount TV as close as possible to wall.

### Turn &/or Tilt



- Tilt action permits TV positioning to avoid screen glare and reflections.
- Models featuring swivel action offer improved viewing flexibility, especially when combined with single arm extension.

### Full Motion



- Full articulation mounts permit ultimate viewing flexibility.
- Ideal for mounting into corners or to rotate screen at right angles to wall.



ROSS™

NEO  
SERIES

TV WALL MOUNTS

The stunning **Neo** TV Wall Mounts are great for all types and sizes of Plasma, LCD or LED television. They come in attractive multi language packs and the products are pre-assembled for ease of installation.

#### Useful design features

Spirit level  
for accurate  
installation



Cushioned pads  
for TV protection  
& improved audio  
performance



Quick release  
handle for easy  
adjustment



Shaped arm  
for superior  
strength





# Flat to Wall TV Mounts

- Low profile design for picture style mounting
- Easy slide-on installation
- Safety locking screw

Product Code	Screen Size	Max VESA Size	Max Weight	Distance to Wall	
LNF100	13-23" 33-58cm	100 x 100mm	20kg (44lbs)	0.7" 18mm	UK
LNF120	13-32" 33-81cm	200 x 100mm	25kg (55lbs)	0.7" 18mm	
LNF200	23-50" 58-127cm	200 x 200mm	25kg (55lbs)	0.7" 18mm	UK
LNF240	23-55" 58-140cm	400 x 200mm	30kg (66lbs)	0.7" 18mm	



LNF200

- Ultra low profile design ideal for LED and 3D TVs
- Mounts only 16mm from the wall
- Pull cords for easy release of TV
- Spirit level for accurate installation
- Easy slide on pre-assembled design for one person install

LNSRF400	32-70" 81-178cm	400 x 400mm	50kg (110lbs)	0.6" 16mm	UK
LNSRF600	50-85" 127-216cm	600 x 400mm	50kg (110lbs)	0.6" 16mm	UK



LNSRF400

UK = UK Stocked



# Turn and Tilt TV Mounts



LNST200

- Turn & Tilt for more flexible viewing
- Easy slide-on installation
- Spirit level for accurate installation
- Safety locking screw

Product Code	Screen Size	Max VESA Size	Max Weight	Distance to Wall	Tilt Range	Pan Range
LNST100	13-23" 33-58cm	100 x 100mm	20kg (44lbs)	3.2" 82.5mm	+/-15°	50°
LNST120	13-32" 33-81cm	200 x 100mm	25kg (55lbs)	3.2" 82.5mm	+/-15°	50°
LNST200	23-50" 58-127cm	200 x 200mm	25kg (55lbs)	3.2" 82.5mm	+/-15°	50°
LNST240	23-55" 58-140cm	400 x 200mm	30kg (66lbs)	3.2" 82.5mm	+/-15°	40°



LNSA200

- Single arm for improved viewing
- Easy slide-on installation
- Safety locking screw
- Spirit level for accurate installation

LNSA100	13-23" 33-58cm	100 x 100mm	20kg (44lbs)	2.7-11.2" 68-285mm	+/-15°	180°
LNSA120	13-32" 33-81cm	200 x 100mm	25kg (55lbs)	2.7-11.2" 68-285mm	+/-15°	180°
LNSA200	23-50" 58-127cm	200 x 200mm	25kg (55lbs)	2.7-11.2" 68-285mm	+/-15°	180°
LNSA240	23-55" 58-140cm	400 x 200mm	30kg (66lbs)	2.7-11.2" 68-285mm	+/-15°	180°





# Tilt TV Mounts

- Variable tilt to reduce screen glare
- Spirit level for accurate installation
- Fingertip tilt adjustment
- Choice of easy adjust virtual axis (LNRVT) or added support of dual friction (LNRPT) tilt adjusters
- Adjustable mounting frame
- Safety locking screw

Product Code	Screen Size	Max VESA Size	Max Weight	Distance to Wall	Tilt Range
LNRVT400	32-70" 81-178cm	400 x 400mm	30kg (66lbs)	2.6" 65mm	+/-15°
LNRVT600	50-85" 127-216cm	600 x 400mm	40kg (88lbs)	2.6" 65mm	+/-15°
LNRVT800	75-110" 190-279cm	800 x 400mm	50kg (110lbs)	2.6" 65mm	+/-15°
LNRPT400	32-70" 81-178cm	400 x 400mm	60kg (132lbs)	2.6" 65mm	+/-15°
LNRPT600	50-85" 127-216cm	600 x 400mm	60kg (132lbs)	2.6" 65mm	+/-15°
LNRPT800	75-110" 190-279cm	800 x 400mm	60kg (132lbs)	2.6" 65mm	+/-15°

- Variable tilt action for more flexible viewing
- Low profile design mounts TV only 28mm from wall
- Extending tilt feature prevents bottom of TV from touching wall when fully tilted
- Spirit level for accurate installation
- Pull-cord feature for easy release of TV

LNSRET400	32-70" 81-178cm	400 x 400mm	40kg (88lbs)	1.1" 28mm	+0°/-15°
LNSRET600	50-85" 127-216cm	600 x 400mm	40kg (88lbs)	1.1" 28mm	+0°/-15°



LNRPT400



LNSRET400



# Full Motion TV Mounts

- Double arms for all round viewing
- Great for corners
- Folds flat to the wall
- Easy slide-on installation
- Spirit level for accurate installation
- Safety locking screw



LND A100

Product Code	Screen Size	Max VESA Size	Max Weight	Distance to Wall	Tilt Range	Pan Range
LND A100	13-23" 33-58cm	100 x 100mm	20kg (44lbs)	2.7"-13.2" 68-335mm	+/-15°	180°
LND A120	13-32" 33-81cm	200 x 100mm	25kg (55lbs)	2.7"-13.2" 68-335mm	+/-15°	180°
LND A200	23-50" 58-127cm	200 x 200mm	25kg (55lbs)	2.7"-13.2" 68-335mm	+/-15°	180°



- Triple arms for full motion and added support
- Great for corners
- Folds flat to the wall
- Easy slide-on installation
- Spirit level for accurate installation
- Safety locking screw



LNT A100

LNT A100	13-23" 33-58cm	100 x 100mm	20kg (44lbs)	2.7"-13.6" 68-346mm	+/-15°	180°
LNT A120	13-32" 33-81cm	200 x 100mm	25kg (55lbs)	2.7"-13.6" 68-346mm	+/-15°	180°
LNT A200	23-50" 58-127cm	200 x 200mm	25kg (55lbs)	2.7"-13.6" 68-346mm	+/-15°	180°
LNT A240	23-55" 58-140cm	400 x 200mm	30kg (66lbs)	2.7"-13.6" 68-346mm	+/-15°	180°





# Full Motion TV Mounts

- Triple arms for full motion and added support
- Variable tilt to reduce screen glare
- VESA extension kit included to expand screen size range
- Easy to use TV levelling feature
- Cable management features included
- Integrated spirit level for accurate installation
- Neo protective pads



Product Code	Screen Size	Max VESA Size	Max Weight	Distance to Wall	Tilt Range	Pan Range
LNLTA200E	32-70" 81-178cm	400 x 400mm	40kg (88lbs)	2.4"-21.7" 60-550mm	+/-15°	180°

- Six arm cantilever structure for full motion and added support
- Variable tilt to reduce screen glare
- VESA extension kit included to expand screen size range
- Easy to use TV levelling feature
- Cable management features included
- Integrated spirit level for accurate installation
- Neo protective pads



LNLFM200E	32-70" 81-178cm	400 x 400mm	50kg (110lbs)	2.6"-21.7" 65-550mm	+/-15°	180°
-----------	--------------------	-------------	------------------	------------------------	--------	------



# Full Motion TV Mounts



- Triple arms for full motion and added support
- Screen can be rotated to 90°. Also great for corners.
- Folds back flat to wall when not in use
- Variable tilt action
- Tool-free safety locking feature
- Spirit level for accurate installation
- Also available in 'double-stud' wide mount version



Product Code	Screen Size	Max VESA Size	Max Weight	Distance to Wall	Tilt Range	Pan Range
LNRTA400	32-70" 81-178cm	400 x 400mm	40kg (88lbs)	2.9"-21" 76-531mm	+/-15°	180°
LNRTA600	50-85" 127-216cm	600 x 400mm	40kg (88lbs)	2.9"-21" 76-531mm	+/-15°	180°
LNRTA800	75-110" 190-279cm	800 x 400mm	40kg (88lbs)	2.9"-21" 76-531mm	+/-15°	180°
LNRDSTA400	32-70" 81-178cm	400 x 400mm	40kg (88lbs)	2.9"-21" 76-531mm	+/-15°	180°
LNRDSTA600	50-85" 127-216cm	600 x 400mm	40kg (88lbs)	2.9"-21" 76-531mm	+/-15°	180°

- Cantilever 6 arm LCD Mount for smooth and level swivel adjustment
- Perfect for all round viewing with 130° swivel
- Safety locking screw
- Variable tilt to reduce screen glare
- Folds back flat to wall when not in use
- Spirit level for accurate installation



LNRFM400	32-70" 81-178cm	400 x 400mm	50kg (110lbs)	4.5"-14.7" 114-373mm	+/-15°	106°
LNRFM600	50-85" 127-216cm	600 x 400mm	50kg (110lbs)	4.5"-14.7" 114-373mm	+/-15°	106°
LNRFM600XL	50-85" 127-216cm	600 x 400mm	40kg (88lbs)	4.5"-24.9" 114-633mm	+/-15°	130°
LNRFM800XL	75-110" 190-279cm	800 x 400mm	40kg (88lbs)	4.5"-24.9" 114-633mm	+/-15°	130°

# Range Overview

	Flat to Wall	Variable Tilt	Turn & Tilt	Single Arm	Double Arm	Full Motion		
<b>13-23"</b>	<b>LNF100</b>			<b>LNST100</b>	<b>LNSA100</b>	<b>LNDA100</b>	<b>LNTA100</b>	
Max VESA mm	100 x 100mm			100 x 100mm	100 x 100mm	100 x 100mm	100 x 100mm	
Max Weight	20Kg (44lbs)			20Kg (44lbs)	20Kg (44lbs)	20Kg (44lbs)	20Kg (44lbs)	
Tilt	-			+/- 15°	+/- 15°	+/- 15°	+/- 15°	
Pan	-			50°	180°	180°	180°	
Dist. to wall	18mm			82.5mm	68-285mm	68-335mm	68-346mm	
<b>13-32"</b>	<b>LNF120</b>			<b>LNST120</b>	<b>LNSA120</b>	<b>LNDA120</b>	<b>LNTA120</b>	
Max VESA mm	200 x 100mm			200 x 100mm	200 x 100mm	200 x 100mm	200 x 100mm	
Max Weight	25Kg (55lbs)			25Kg (55lbs)	25Kg (55lbs)	25Kg (55lbs)	25Kg (55lbs)	
Tilt	-			+/- 15°	+/- 15°	+/- 15°	+/- 15°	
Pan	-			50°	180°	180°	180°	
Dist. to wall	18mm			82.5mm	68-285mm	68-335mm	68-346mm	
<b>23-50"</b>	<b>LNF200</b>			<b>LNST200</b>	<b>LNSA200</b>	<b>LNDA200</b>	<b>LNTA200</b>	
Max VESA mm	200 x 200mm			200 x 200mm	200 x 200mm	200 x 200mm	200 x 200mm	
Max Weight	25Kg (55lbs)			25Kg (55lbs)	25Kg (55lbs)	25Kg (55lbs)	25Kg (55lbs)	
Tilt	-			+/- 15°	+/- 15°	+/- 15°	+/- 15°	
Pan	-			50°	180°	180°	180°	
Dist. to wall	18mm			82.5mm	68-285mm	68-335mm	68-346mm	
<b>23-50"</b>	<b>LNF240</b>			<b>LNST240</b>	<b>LNSA240</b>		<b>LNTA240</b>	
Max VESA mm	400 x 200mm			400 x 200mm	400 x 200mm		400 x 200mm	
Max Weight	30Kg (66lbs)			30Kg (66lbs)	30Kg (66lbs)		30Kg (66lbs)	
Tilt	-			+/- 15°	+/- 15°		+/- 15°	
Pan	-			40°	180°		180°	
Dist. to wall	18mm			82.5mm	68-285mm		68-346mm	
<b>32-70"</b>	<b>LNSRF400</b>	<b>LNRVT400</b>	<b>LNRPT400</b>				<b>LNLTA200E</b>	<b>LNLFM200E</b>
Max VESA mm	400 x 400mm	400 x 400mm	400 x 400mm				400 x 400mm	400 x 400mm
Max Weight	50Kg (110lbs)	30Kg (66lbs)	60Kg (132lbs)				40Kg (88lbs)	50Kg (110lbs)
Tilt	-	+/- 15°	+/- 15°				+/- 15°	+/- 15°
Pan	-	-	-				180°	180°
Dist. to wall	16mm	65mm	65mm				60-550mm	65-550mm
<b>32-70"</b>		<b>LNSRET400</b>					<b>LNRTA400</b>	<b>LNRFM400</b>
Max VESA mm		400 x 400mm					400 x 400mm	400 x 400mm
Max Weight		40Kg (88lbs)					40Kg (88lbs)	50Kg (110lbs)
Tilt		+0°/- 15°					+/- 15°	+/- 15°
Pan		-					180°	106°
Dist. to wall		28mm					76-531mm	114-373mm
<b>32-70"</b>							<b>LNRDSTA400</b>	
Max VESA mm							400 x 400mm	
Max Weight							40Kg (88lbs)	
Tilt							+/- 15°	
Pan							180°	
Dist. to wall							76-531mm	
<b>50-85"</b>	<b>LNSRF600</b>	<b>LNRVT600</b>	<b>LNRPT600</b>				<b>LNRTA600</b>	<b>LNRFM600</b>
Max VESA mm	600 x 400mm	600 x 400mm	600 x 400mm				600 x 400mm	600 x 400mm
Max Weight	50Kg (110lbs)	40Kg (88lbs)	60Kg (132lbs)				40Kg (88lbs)	50Kg (110lbs)
Tilt	-	+/- 15°	+/- 15°				+/- 15°	+/- 15°
Pan	-	-	-				180°	106°
Dist. to wall	16mm	65mm	65mm				76-531mm	114-373mm
<b>50-85"</b>		<b>LNSRET600</b>					<b>LNRDSTA600</b>	<b>LNRFM600XL</b>
Max VESA mm		600 x 400mm					600 x 400mm	600 x 400mm
Max Weight		40Kg (88lbs)					40Kg (88lbs)	40Kg (88lbs)
Tilt		+0°/- 15°					+/- 15°	+/- 15°
Pan		-					180°	130°
Dist. to wall		28mm					76-531mm	114-633mm
<b>75-110"</b>		<b>LNRVT800</b>	<b>LNRPT800</b>				<b>LNRTA800</b>	<b>LNRFM800XL</b>
Max VESA mm		800 x 400mm	800 x 400mm				800 x 400mm	800 x 400mm
Max Weight		50Kg (110lbs)	60Kg (132lbs)				40Kg (88lbs)	40Kg (88lbs)
Tilt		+/- 15°	+/- 15°				+/- 15°	+/- 15°
Pan		-	-				180°	130°
Dist. to wall		65mm	65mm				76-531mm	114-633mm





CLASSIC

SERIES

TV WALL MOUNTS

The Ross **Classic Series** TV wall mounts offer a range of formats and functions to suit virtually all LCD, LED and Plasma TV mounting requirements. They are easy to install and use, with a range of security features.

#### Useful design features

Spirit level for accurate installation



Wall plate cover conceals wall fixings





# Flat to Wall TV Mounts

- Low profile design for picture style mounting
- Easy slide on installation
- Safety locking screw

Product Code	Screen Size	Max VESA Size	Max Weight	Distance to Wall
LCDF23	13-23" 33-58cm	100 x 100mm	15kg (33lbs)	0.6" 15.6mm
LCDF32	23-50" 58-127cm	200 x 200mm	25kg (55lbs)	0.6" 15.6mm



LCDF32

- Low profile design for picture style mounting
- Adjustable mounting frame
- Safety locking screw
- Spirit level for accurate installation

LRF400	32-70" 81-178cm	400 x 400mm	30kg (66lbs)	1.1" 28mm	UK
LRF600	50-85" 127-216cm	600 x 400mm	40kg (88lbs)	1.1" 28mm	UK
LRF800	75-110" 190-279cm	800 x 400mm	50kg (110lbs)	1.1" 28mm	



LRF400

- Low profile design for picture style mounting
- Easy slide on installation
- Spirit level for accurate installation
- Pull cord feature combines security of mount with easy release of TV

LPSRF400	32-70" 81-178cm	400 x 400mm	50kg (110lbs)	0.6" 14mm	UK
LPSRF600	50-85" 127-216cm	600 x 400mm	50kg (110lbs)	0.6" 14mm	UK



LPSRF600



# Turn and/or Tilt TV Mounts

- Adjustable tilt and turn to reduce screen glare and reflections
- Easy slide on installation
- Safety locking screw



LCDST32



LCDSA32



LRT600

Product Code	Screen Size	Max VESA Size	Max Weight	Distance to Wall	Tilt Range	Pan Range
LCDT23	13-23" 33-58cm	100 x 100mm	15kg (33lbs)	1.4" 35mm	+/-13°	-
LCDT32	23-50" 58-127cm	200 x 200mm	25kg (55lbs)	1.4" 35mm	+/-10°	-
LCDST23	13-23" 33-58cm	100 x 100mm	20kg (44lbs)	3" 77mm	+/-15°	50°
LCDST32	23-50" 58-127cm	200 x 200mm	25kg (55lbs)	3" 77mm	+/-15°	50°

- Single arm with tilt for better viewing angles
- Folds flat, extends out, good for corners
- Easy slide on installation
- Safety locking screw
- Attractive wall plate cover

LCDSA23	13-23" 33-58cm	100 x 100mm	15kg (33lbs)	2.7"-10.9" 68-277mm	+/-15°	180°
LCDSA32	23-50" 58-127cm	200 x 200mm	25kg (55lbs)	2.7"-10.9" 68-277mm	+/-15°	180°

- Close to wall design for picture style mounting
- Optional fixed tilt to reduce glare
- Adjustable mounting frame
- Spirit level for accurate installation

LRT400	32-70" 81-178cm	400 x 400mm	30kg (66lbs)	1.6" 40mm	+0/-10°	-
LRT600	50-85" 127-216cm	600 x 400mm	40kg (88lbs)	1.6" 40mm	+0/-10°	-
LRT800	75-110" 190-279cm	800 x 400mm	50kg (110lbs)	1.6" 40mm	+0/-10°	-



# Full Motion TV Mounts

- Double arm with tilt for superior viewing angles
- Folds flat, extends out, good for corners
- Easy slide on installation
- Safety locking screw
- Attractive wall plate cover

Product Code	Screen Size	Max VESA Size	Max Weight	Distance to Wall	Tilt Range	Pan Range
LCDDA23	13-23" 33-58cm	100 x 100mm	15kg (33lbs)	2.7"-12.9" 68-328cm	+/-15°	180°
LCDDA32	23-50" 58-127cm	200 x 200mm	25kg (55lbs)	2.7"-12.9" 68-328cm	+/-15°	180°



LCDDA23



LCDDA32



Essentials

TV WALL MOUNTS



The Ross **Essentials** TV wall mount range is carefully tailored to cover all LCD, LED and Plasma TV mounting requirements.

Our designs offer reduced package size for improved shipping fills, reducing your carbon footprint.

The product packaging also offers easy merchandising with simple to shop communicative icons.

#### Useful design features

Spirit level for accurate installation



Pull cords for easy release of TV



Easy friction adjustment for tilt/turn action





# Flat to Wall TV Mounts

- Low profile design for picture style mounting
- Easy slide on installation
- Safety locking screw

Product Code	Screen Size	Max VESA Size	Max Weight	Distance to Wall	
LEF100	13-23" 33-58cm	100 x 100mm	20kg (44lbs)	0.5" 13mm	UK
LEF210	13-32" 33-81cm	200 x 100mm	20kg (44lbs)	0.5" 13mm	
LEF200	23-50" 58-127cm	200 x 200mm	20kg (44lbs)	0.5" 13mm	UK



- Ultra low profile design ideal for LED
- Mounts only 14mm from the wall
- Pull cords for easy release of TV
- Spirit level for accurate installation

LPSRFS200	23-50" 58-127cm	200 x 200mm	40kg (88lbs)	0.55" 14mm	
LPSRFS400	32-70" 81-178cm	400 x 400mm	60kg (132lbs)	0.55" 14mm	UK
LPSRFS600	50-85" 127-216cm	600 x 600mm	60kg (132lbs)	0.55" 14mm	UK





# Turn and/or Tilt TV Mounts



LEST200



LESA100



LPSRVT400



LPSRBT400

- Turn and Tilt for flexible viewing
- Easy slide on installation
- Tool-free adjustment of tilt action

Product Code	Screen Size	Max VESA Size	Max Weight	Distance to Wall	Tilt Range	Pan Range
LEST100	13-23" 33-58cm	100 x 100mm	20kg (44lbs)	2.3" 59mm	+5°/-15°	30°
LEST200	23-50" 58-127cm	200 x 200mm	20kg (44lbs)	2.3" 59mm	+5°/-15°	30°
LESA100	13-23" 33-58cm	100 x 100mm	20kg (44lbs)	1.55"-9" 40-230mm	+5°/-15°	180°
LESA200	23-50" 58-127cm	200 x 200mm	20kg (44lbs)	1.55"-9" 40-230mm	+5°/-15°	180°



- Variable tilt to reduce screen glare
- Fingertip tilt adjustment
- Pull cords for easy release of TV
- Spirit level for accurate installation

LPSRVT200	23-50" 58-127cm	200 x 200mm	40kg (88lbs)	2.6" 65mm	+/-12°	-
LPSRVT420	32-42" 81-106cm	400 x 200mm	40kg (88lbs)	2.6" 65mm	+/-12°	-
LPSRVT400	32-70" 81-178cm	400 x 400mm	40kg (88lbs)	2.6" 65mm	+/-12°	-
LPSRVT600	50-85" 127-216cm	600 x 400mm	40kg (88lbs)	2.6" 65mm	+/-12°	-



- Variable tilt action for more flexible viewing
- Low profile design mounts TV only 25mm from the wall
- Spirit level for accurate installation
- Pull cords for easy release of TV

LPSRBT400	32-70" 81-178cm	400 x 400mm	40kg (88lbs)	1.0" 25mm	+0/-15°	-
LPSRBT600	50-85" 127-216cm	600 x 400mm	40kg (88lbs)	1.0" 25mm	+0/-15°	-

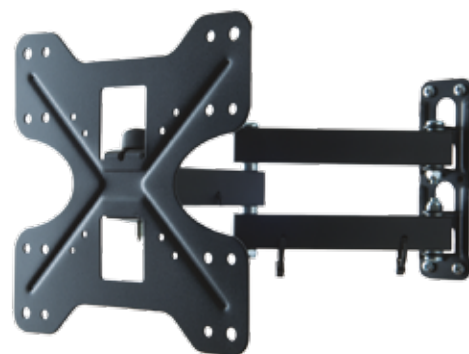




# Full Motion TV Mounts

- Triple arm motion for ultimate viewing flexibility and added screen support
- TV screen can be rotated up to 90° to wall
- Great for mounting into corners
- Tool free adjustment of tilt action
- Easy slide-on installation

Product Code	Screen Size	Max VESA Size	Max Weight	Distance to Wall	Tilt Range	Pan Range
LETA100	13-23" 33-58cm	100 x 100mm	20kg (44lbs)	2"-13.4" 53-341mm	+5°/-15°	180°
LETA200	23-50" 58-127cm	200 x 200mm	20kg (44lbs)	2"-13.4" 53-341mm	+5°/-15°	180°



LETA200

- Triple arm motion for ultimate viewing flexibility and added screen support
- TV screen can be rotated up to 90° to wall
- Great for mounting into corners
- Tool free adjustment of tilt action
- Spirit level for accurate installation
- Easy slide-on installation

LETA400	32-70" 81-178cm	400 x 400mm	40kg (88lbs)	2.9"-21" 74-529mm	+/-15°	180°
LETA600	50-85" 127-216cm	600 x 400mm	40kg (88lbs)	2.9"-21" 74-529mm	+/-15°	180°



LETA400





## AV ACCESSORIES

A range of innovative technology mounts to conveniently mount flat screen TVs, computer monitors, projectors and associated AV equipment into any domestic or commercial environment, satisfying a range of mounting situations and functional applications.

**Range includes:**

**Desk Mount Monitor Arms**

**TV Ceiling Mounts**

**Projector Mounts**

**AV Shelves**

**Kitchen Solutions**

**TV Mount Accessories**





# Desk Mounts

Desk mount monitor arms for versatile and ergonomically correct mounting of computer monitors to the office desk or workstation, leading to more flexible working, improved operator comfort and ultimately improved productivity.

## Desk Mount Monitor Arm

- Easy to position monitor where you want it
- Monitor levelling/portrait to landscape feature
- Integrated cable management
- Versatile desk Clamp mount

Product Code	Description	Colour	Max VESA Size	Max Weight	Extension Distance	Height
DME1DACMS	Desk Clamp Mount	Silver	100 x 100mm	8kg (17.6lbs)	14.3" (363mm)	6.2"-18.2" (157-462mm)
DME1DACMB	Desk Clamp Mount	Black	100 x 100mm	8kg (17.6lbs)	14.3" (363mm)	6.2"-18.2" (157-462mm)



## Dual Desk Mount Monitor Arm

- Easy to position two monitors side by side
- Monitor levelling/portrait to landscape feature
- Integrated cable management
- Versatile desk Clamp mount

DME2DACMS	Desk Clamp Mount	Silver	100 x 100mm	8kg (17.6lbs)	14.3" (363mm)	6.2"-18.2" (157-462mm)
DME2DACMB	Desk Clamp Mount	Black	100 x 100mm	8kg (17.6lbs)	14.3" (363mm)	6.2"-18.2" (157-462mm)



## Dynamic Action Desk Mount Monitor Arm

- Easy to position monitor where you want it
- Dynamic spring action height adjustment
- Monitor levelling/portrait to landscape feature
- Integrated cable management

Product Code	Description	Colour	Max VESA Size	Weight Range	Extension Distance	Height
DMS1DACMS	Desk Clamp Mount	Silver	100 x 100mm	3.8-8kg (8.4-17.6lbs)	26.8" (680mm)	2.4"-19.7" (60-500mm)
DMS1DACMG	Desk Clamp Mount	Dark Grey	100 x 100mm	3.8-8kg (8.4-17.6lbs)	26.8" (680mm)	2.4"-19.7" (60-500mm)





Image by Alexey Nikolashin

# Ceiling Mounts

TV Ceiling Mounts permit flexible and adjustable ceiling mounting of flat-screen TVs. Ideal for meeting rooms, reception areas, retail environments, public spaces, digital signage and wayfinding applications.



CMST200

Product Code	Screen Size	Max VESA Size	Max Weight	Tilt Range	Pan Range	Height
CMST200	23-50" 58-127cm	200 x 200mm	30kg (66lbs)	+/-15°	360°	450-900mm
CM2XST200	2x 23-50" 2x 58-127cm	200 x 200mm	30kg (66lbs)	+/-15°	360°	450-900mm
CMRT400	32-70" 81-178cm	400 x 400mm	30kg (66lbs)	+0/-10°	360°	450-900mm
CM2XRT400	2x 32-70" 2x 81-178cm	400 x 400mm	30kg (66lbs)	+0/-10°	360°	450-900mm
CMRVT400	32-70" 81-178cm	400 x 400mm	30kg (66lbs)	+/-15°	360°	450-900mm
CM2XRVT400	2x 32-70" 2x 81-178cm	400 x 400mm	30kg (66lbs)	+/-15°	360°	450-900mm



CMRT400



CMRVT400



CM2XRVT400



# Projector Mounts

Projector Mounts for adjustable ceiling mounting of AV projection equipment in meeting rooms, presentation areas, or public spaces.

- Available in fixed height and adjustable versions
- Full tilt and swivel
- Flexible mount arms suit all models of projector

Product Code	Max Weight	Length	Swivel
CPM01	10kg (22lbs)	200mm	360°
CPM02	10kg (22lbs)	507 - 747mm	360°



CPM01



CPM02



# AV Shelves

AV Shelves to conveniently wall-mount AV equipment associated with the TV display, for example DVD player, TV digibox, small format computer, games console, etc

## Single & Double Shelf

- AV support bars
- Multi-position mounting heights
- Cable management system

Product Code	No. of Shelves	Max Weight
WMS1	Single	5kg (11lbs)
WMS2	Double	5kg (11lbs)



## Single & Double Shelf

- Tempered glass shelves
- Shelf size 420 x 300mm x 6mm thick
- Multi-position mounting heights
- Cable management system

Product Code	No. of Shelves	Glass Colour	Max Weight
WMSB1	Single	Black Glass	5kg (11lbs)
WMSB2	Double	Black Glass	5kg (11lbs)
WMSG1	Single	Clear Glass	5kg (11lbs)
WMSG2	Double	Clear Glass	5kg (11lbs)



# AV Shelves

## Single & Double Shelf

- Tempered glass shelves
- Shelf size 420 x 300mm x 6mm thick
- Multi-position mounting heights
- Integral double arm TV mount
- Cable management system
- Max weight on TV mount 25kg
- VESA size - 200 x 200

Product Code	No. of Shelves	Glass Colour	Max Weight
WMSB1NDA2	Single	Black Glass	5kg (11lbs)
WMSG1NDA2	Single	Clear Glass	5kg (11lbs)
WMSB2NDA2	Double	Black Glass	5kg (11lbs)
WMSG2NDA2	Double	Clear Glass	5kg (11lbs)





AVR5400B

## AV Racks

- Tempered glass with polished edges
- Top shelf glass 8mm thick, other shelves 6mm
- Tapered design - ideal for corners
- Cable management at rear
- Available in 3, 4 and 5 shelf alternatives

Product Code	Glass	Stand	Shelf	Max Weight	Height	Width	Depth
AVR3400B	Piano Black	Silver	3	40kg (88lbs)	595mm	610mm	400mm
AVR4400B	Piano Black	Silver	4	40kg (88lbs)	755mm	610mm	400mm
AVR5400B	Piano Black	Silver	5	40kg (88lbs)	860mm	610mm	400mm



# Speaker Mounts

Ross Speaker Stands support a variety of speaker styles, such as bookshelf and micro speakers and are ideal for surround sound cinema systems.

- Suitable for bookshelf or micro speakers
- Available in fixed or variable height versions

Product Code	Description	Height Format	Suitable for
SFNLU2	Floor standing	Fixed	Book Shelf Speakers
SFNSU1	Floor standing	Fixed	Book Shelf Speakers
SFNSU2	Floor standing	Adjustable	Micro Speakers



SFNLU2



SFNSU1



SFNSU2

- Suitable for Micro Speakers
- Fully adjustable tilt and swivel

Product Code	Description	Max Weight	Distance to Wall	Tilt Range	Pan Range
SMNSU	Speaker wall mount with Neo pads	5kg (11lbs)	3.2" 82mm	+0°/-45°	180°
SMHC	Speaker wall mount	5kg (11lbs)	3.2" 82mm	+0°/-45°	180°



SMNSU



SMHC

Also see page 33 for the Universal Soundbar Speaker Mount - SMNSB





# TV Mount Accessories

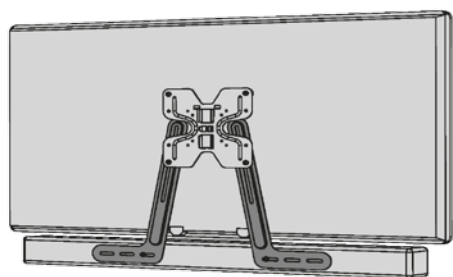
## Universal Cable Cover - CCA1050C

- Tidies and covers cables to wall mounted equipment
- Easy to install, with clip-on aluminium covers
- Can be installed straight or as a right-angled corner
- Suitable for painting to match wall
- Perfect companion to any wall mounted TV
- Suitable for usage up to 1m



## Universal Soundbar Speaker Mount - SMNSB

- Mounts a soundbar speaker directly to your TV
- Speaker can be mounted above or below the TV
- Fits most flat screen TVs and soundbar speakers
- VESA compliant
- Easy to install
- Cushioned pads for equipment protection and improved audio performance



## Anti-Tip TV Safety Strap - TVSS

- Prevents a flat screen TV from tipping over and causing injury to children or pets
- Also prevents damage to TV
- Nylon straps secure TV in upright position
- Can fix to furniture or to wall
- Quick and easy to fit and adjust
- Fits all flat screen TVs





# Kitchen Solutions

## Microwave Wall Mount

- Free up valuable kitchen work surface space
- Adjustable extension arms fit microwave oven feet
- Choose colour to match microwave oven

Product Code	Colour	Max Weight
MWBRFW	White	40kg (88lbs)
MWBRFSL	Silver	40kg (88lbs)



MWBRFSL

## Under Unit Flip-Down TV Mount

- Suitable for use in the kitchen
- TV can be stored away when not in use
- Slide and swivel action to conveniently position TV
- Compatible with all major TV brands

Product Code	Screen Size	Max VESA Size	Max Weight
TVFL100	13-23" 33-58cm	100 x 100mm	15kg (33lbs)



TVFL100

## Under Unit TV Mount

- Suitable for use in the kitchen
- Fixed TV position
- Compatible with all major TV brands

Product Code	Screen Size	Max VESA Size	Max Weight
TVUC100	13-23" 33-58cm	100 x 100mm	15kg (33lbs)



TVUC100



## TV FLOOR STANDS



Ross **TV floor Stands** help deliver great Audio Visual performance to heighten the TV home cinema experience. Contemporary designs blend with subtle colours and finishes to complement the modern home and enhance the beauty of your flat panel TV.

### Features:

#### Tempered Glass

Manufactured to European Standards (EN 12150) which is 5x stronger than normal glass

#### Strong Leg Construction

Constructed with aluminium and coated in a hard-wearing stain resistant finish

#### Cable Management

Allows cables from the TV and set top boxes to be routed neatly down the back of the stand



# SLIMLINE TV Stands

- Tempered glass with polished edges
- Top shelf glass 8mm thick, other shelves 5mm
- Traditional slimline design with four legs
- Available in piano black or frosted glass finish



F3B1S70



F3B1B90

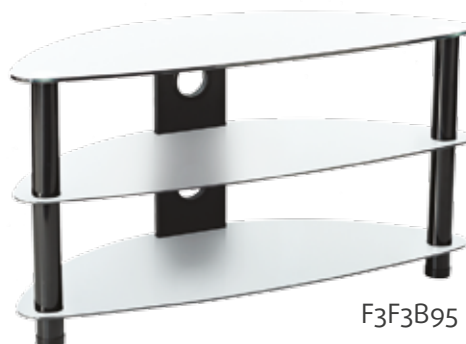
Product Code	Glass	Stand	Screen Size	Max Weight	Height	Width	Depth
F3B1B70	Piano Black	Black	Up to 32" 81cm	60kg (132lbs)	450mm	700mm	350mm
F3B1S70	Piano Black	Silver	Up to 32" 81cm	60kg (132lbs)	450mm	700mm	350mm
F3F1B70	Frosted	Black	Up to 32" 81cm	60kg (132lbs)	450mm	700mm	350mm
F3F1S70	Frosted	Silver	Up to 32" 81cm	60kg (132lbs)	450mm	700mm	350mm
F3B1B90	Piano Black	Black	Up to 42" 106cm	70kg (154lbs)	450mm	900mm	350mm
F3B1S90	Piano Black	Silver	Up to 42" 106cm	70kg (154lbs)	450mm	900mm	350mm
F3F1B90	Frosted	Black	Up to 42" 106cm	70kg (154lbs)	450mm	900mm	350mm
F3F1S90	Frosted	Silver	Up to 42" 106cm	70kg (154lbs)	450mm	900mm	350mm



F3B3B95

## CORNER TV Stands

- Tempered glass with polished edges
- Top shelf glass 8mm thick, other shelves 5mm
- Shaped curve design with three legs ideal for corners
- Cable management panel at rear
- Available in piano black or frosted glass finish



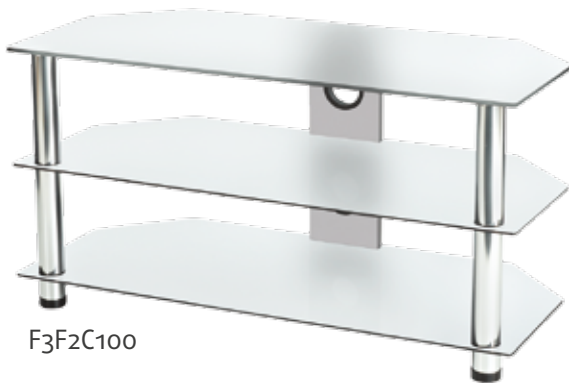
F3F3B95

Product Code	Glass	Stand	Screen Size	Max Weight	Height	Width	Depth
F3B3B95	Piano Black	Black	Up to 50" 127cm	60kg (132lbs)	500mm	950mm	390mm
F3B3S95	Piano Black	Silver	Up to 50" 127cm	60kg (132lbs)	500mm	950mm	390mm
F3F3B95	Frosted	Black	Up to 50" 127cm	60kg (132lbs)	500mm	950mm	390mm
F3F3S95	Frosted	Silver	Up to 50" 127cm	60kg (132lbs)	500mm	950mm	390mm
F3B3B115	Piano Black	Black	Up to 60" 152cm	70kg (154lbs)	500mm	1150mm	420mm
F3B3S115	Piano Black	Silver	Up to 60" 152cm	70kg (154lbs)	500mm	1150mm	420mm
F3F3B115	Frosted	Black	Up to 60" 152cm	70kg (154lbs)	500mm	1150mm	420mm
F3F3S115	Frosted	Silver	Up to 60" 152cm	70kg (154lbs)	500mm	1150mm	420mm



# PRESTIGE TV Stands

- Tempered glass with polished edges
- Top shelf glass 8mm thick, other shelves 5mm
- Tapered rectangular design
- Cable management panel at rear
- Attractive chrome structure
- Available in piano black or frosted glass finish



F3F2C100



F3B2C115

Product Code	Glass	Stand	Screen Size	Max Weight	Height	Width	Depth
F3B2C100	Piano Black	Chrome	Up to 50" 127cm	70kg (154lbs)	510mm	1000mm	450mm
F3F2C100	Frosted	Chrome	Up to 50" 127cm	70kg (154lbs)	510mm	1000mm	450mm
F3B2C115	Piano Black	Chrome	Up to 60" 152cm	70kg (154lbs)	510mm	1150mm	450mm
F3F2C115	Frosted	Chrome	Up to 60" 152cm	70kg (154lbs)	510mm	1150mm	450mm



F3B3B95

## OVAL TV Stands

- Tempered glass with polished edges
- Top shelf glass 8mm thick, other shelves 5mm
- Shaped oval design with three legs is good for corners
- Cable management panel at rear
- Available in piano black or frosted glass finish



F3F4B95

Product Code	Glass	Stand	Screen Size	Max Weight	Height	Width	Depth
F3B4B95	Piano Black	Black	Up to 50" 127cm	60kg (132lbs)	500mm	950mm	390mm
F3B4S95	Piano Black	Silver	Up to 50" 127cm	60kg (132lbs)	500mm	950mm	390mm
F3F4B95	Frosted	Black	Up to 50" 127cm	60kg (132lbs)	500mm	950mm	390mm
F3F4S95	Frosted	Silver	Up to 50" 127cm	60kg (132lbs)	500mm	950mm	390mm



# LINEAR TV Stands

- Tempered glass with polished edges
- Top shelf glass 8mm thick, other shelves 6mm
- Tapered rectangular design
- Cable management panel at rear
- Attractive chrome structure
- Available in piano black glass finish



F3B5S115

Product Code	Glass	Stand	Screen Size	Max Weight	Height	Width	Depth
F3B5S90	Piano Black	Chrome	Up to 42" 106cm	70kg (154lbs)	500mm	900mm	450mm
F3B5S115	Piano Black	Chrome	Up to 60" 152cm	70kg (154lbs)	500mm	1150mm	500mm
F3B5S150	Piano Black	Chrome	Up to 70" 178cm	70kg (154lbs)	500mm	1500mm	500mm





## Home Entertainment Accessories

The Ross AV range offers a complete and comprehensive range of AV cables and accessories to meet your every need and suit your budget. The High performance cable range offers extra protection, high quality finish and extra features.

### Range includes:

- HDMI Cables ■
- SCART Cables ■
- Audio Cables ■
- USB Cables ■
- TV Coax Cables & Connectors ■
- Reception & Distribution ■
- F/Sat Cables & Connectors ■
- Care



# HDMI Cables



## HIGH PERFORMANCE HDMI Cables

- This stylish Ross cable has 24k gold plated HDMI Male to Male connectors. With a chrome plated, zinc alloy shell, the cable is protected by a PVC jacket and nylon braiding
- Supports all HDMI connections including the next generation of ultra HD/4k televisions
- Supports HDMI with Ethernet - take advantage of your SMART internet - enabled devices without a separate Ethernet cable
- Resolutions up to 4K at 50/60Hz (2160p) - 4 times the clarity of 1080p/60 video resolutions, for the ultimate audio visual experience
- High density triple shielding for maximum rejection of EMI and RFI interference
- 24K Gold plated connector resists corrosion & ensures an optimum connection for maximum signal transfer
- Oxygen Free Copper conductor for maximum conductivity and reliability
- Transfer digital audio & video signals up to 18Gbps
- Delivers true 3D gaming & home cinema experience

## HDMI Cables

- Supports all HDMI connections including - HDMI with Ethernet for SMART technology
- Resolutions up to 4K at 50/60Hz (2160p)
- 24K Gold plated connector resists corrosion & ensures an optimum connection for maximum signal transfer
- High density triple shielding for maximum rejection of EMI & RFI interference



HPHDMIA2



HPHDMIF2

Product Code	Description
HPHDMI1	High Performance HDMI Cable - 1m / 3' 3" (UK)
HPHDMI3	High Performance HDMI Cable - 3m / 9' 10" (UK)
HPHDMIA2	High Performance Angled & Adjustable HDMI Cable - 2m / 6' 6" (UK)
HPHDMIF2	High Performance Flat HDMI Cable - 2m / 6' 6" (UK)



HDMI15	HDMI Cable - 1.5m / 4' 11" (UK)
HDMI3	HDMI Cable - 3m / 9' 10" (UK)
HDMI5	HDMI Cable - 5m / 16' 4" (UK)



# SCART Cables



## HIGH PERFORMANCE SCART Cable

- Supports composite, S-video & RGB picture quality, stereo audio sound & automatic signal switching
- Multiple shielding for maximum protection against radio (RFI) & Electromagnetic (EMI) interference
- High quality foamed polyethylene (FPE) insulation for superior sound & picture quality
- 24K Gold plated contacts for excellent corrosion protection
- Superior flexible outer jacket avoids cable twisting & fracturing

Product Code	Description
HPSC1	High Performance SCART Cable - 1m / 3' 3" (UK)



## SCART Cable

- Connect your audio visual equipment such as DVD's, & digital boxes to TV displays
- Supports composite, S-video & RGB picture quality, stereo audio sound & automatic signal switching
- Nickel plated connectors

SC15	SCART Cable - 1.5m / 4' 11" (UK)
------	----------------------------------



# Audio Cables

## Speaker Cable

- The wire can be cut to the exact length required & the exposed cable end can be easily stripped back for easy installations to most Hi Fi speakers
- 2 x 13 Strand cable
- Speaker wire has a black plastic sheath with grey colour coded marker identification for correct polarisation
- 10 Cable clips included for attaching to skirting board etc



Product Code	Description
SPW10	Speaker Cable with Clips - 10m / 32' 9" <span style="float: right;">(UK)</span>

## Audio Jack & Phono Cables

- Audio jack to Phono - Connect your speakers to a portable device and share your music
- Phono Cable - Connect your audio equipment together
- Audio jack Extension Cable - Connect or extend your stereo, headphone or any device using an audio jack
- 3 Phono to 3 Phono - Connect your TV & audio equipment together



PHSMJ15



PL15



HEC5



PH3PH3/15

PHSMJ15	Audio jack to 2 Phono Cable - 1.5m / 4' 11" <span style="float: right;">(UK)</span>
PL15	2 Phono to 2 Phono Cable - 1.5m / 4' 11" <span style="float: right;">(UK)</span>
HEC5	Audio jack Extension Cable - 5m / 16' 4" <span style="float: right;">(UK)</span>
PH3PH3/15	3 Phono to 3 Phono Cable - 1.5m / 4' 11" <span style="float: right;">(UK)</span>



# USB Cables & Chargers



A30PCW1



ALCW1

## Apple Cables

- An excellent choice of cable for charging &/or syncing your Apple® product
- iPhone, iPad, iPod compatible with your Mac/Windows PC
- Allows charging whilst in a case
- Ensures access to all controls & dock connector
- Certified Apple Approved - iPad, iPhone and iPod are trademarks of Apple Inc., registered in the U.S. and other countries.

## USB Cables

- Mini - Compatible with any device with a mini USB B Port eg. digital camera
- Micro - Compatible with any device with a micro USB B Port eg. smart phones
- 5 in 1 - Contains the most popular USB connection types ensuring all USB devices can be synced & charged
- All Ross USB cables support data transfer rates up to 480Mbps

Product Code	Description	
A30PCW1	30-Pin to USB Cable for Apple - 1m / 3' 3"	(UK)
ALCW1	Lightning to USB Cable for Apple - 1m / 3' 3"	(UK)
USBMINC1	USB to Mini USB Cable - 1m / 3' 3"	(UK)
USBMICC1	USB to Micro USB Cable - 1m / 3' 3"	(UK)
USB51CK12	USB 5 in 1 Connection Kit	(UK)



USBSCC1



USBDC21

## USB Car Chargers

- An excellent choice of charger, allowing you to charge portable devices whilst in the car
- Compatible with Apple, Blackberry, Nokia, HTC & any device powered by USB
- Compact design
- Plug into car cigarette lighter jack to become a USB Port
- USBSCC1-RO - Input 12-24V DC / Output 5V 1A
- USBDC21-RO - Input 12-24V DC / Output 5V 2.1A / 5V 1A

USBSCC1	Single USB Car Charger - 1A	(UK)
USBDC21	Dual USB Car Charger - 2.1A	(UK)

## Power Packs

- Excellent choice for instant portable power, simply connect your portable device via the USB socket & press the button for instant charging
- Advanced intelligent protection chip - overcharge, discharge, short circuit & leakage protection
- LED power indicator to show charge status
- USBPP2 - Capacity 2000mAh single USB output 1Amp
- USBPP52 - Capacity 5200mAh single USB output 1Amp with built in torch
- Supplied with charge



USBPP2



USBPP52

USBPP2	Power Pack 2000mAh - Black	(UK)
USBPP52	Power Pack 5200mAh - White	(UK)



# TV Coax Cables

## TV Coax Cables

- For connecting equipment using a TV aerial socket or to extend an existing TV aerial cable
- Plastic moulded heads with strain relief
- Male to Male Nickel co-axial plugs
- Includes Female couple to allow you to extend or convert the cable from Male to Female
- RG6 Cable



Product Code	Description	
TVLC15	TV Coax Cable - 1.5m / 4' 11"	UK
TVLC3	TV Coax Cable - 3m / 9' 10"	UK
TVLC5	TV Coax Cable - 5m / 16' 4"	UK
TVLC10	TV Coax Cable - 10m / 32' 9"	UK

## TV Coax Connectors

- Coax Connector - Allows you to construct or replace damaged coax leads/connectors
- Connector Kit - Allows you to terminate, extend or join coax cable
- Coupler - Perfect for joining two leads or converting a coax plug to socket
- Splitter - Allows you to connect two TV's to one aerial



CCK3	Coax Cable Connector Kit	UK
CP2	Coaxial Plugs	UK
TVSC2	Coaxial 'Y' Splitter	UK
CC2	Coaxial Couplers	UK



## Reception & Distribution

- Receive full High Definition digital television signals & DAB radio programmes
- All Ross reception and distribution products have an Integrated 4G filter - which removes any interference caused by 4G mobile networks
- Signal booster - 1 input & 4 outputs allows signal to be distributed to up to 4 devices
- Flat - Ultra flat design, offers superior performance with a stylish, discreet appearance
- Loop - Superior performance with a stylish, traditional appearance
- 35 Element Digital TV Aerial Kit - suitable for use outdoor or loft installation, includes mounting kit



Product Code	Description	
4WSBC	4 - Way Signal Booster Coax Connections	(UK)
IAFLAT	Digital Indoor Aerial - Flat Panel 4G	(UK)
IALOOP	Digital Indoor Aerial - Loop 4G	(UK)
35OAK	35 Element Digital TV Aerial Kit - 4G	(UK)



# F/Satellite Cables

## F/Satellite Cables

- For connecting your TV to your satellite box or wall socket
- Plastic moulded heads with strain relief
- 3C-2V Cable
- Male to Male Nickel satellite 'F' plugs
- Includes Female coupler to allow you to extend or convert the plug from Male to Female



Product Code	Description	
SATL15	Satellite 'F' Cable - 1.5m / 4' 11"	UK
SATL3	Satellite 'F' Cable - 3m / 9' 10"	UK
SATL5	Satellite 'F' Cable - 5m / 16' 4"	UK
SATL10	Satellite 'F' Cable - 10m / 32' 9"	UK

## F/Satellite Connectors

- F Type SAT Connector - Allows you to construct or replace damaged satellite 'F' leads/connector
- Connector Kit - Allows you to terminate, extend or join satellite 'F' cables
- Coupler - Perfect for joining two leads or converting an 'F' plug to socket



SATFPLUG	'F' Type Satellite Connector	UK
SATCK3	'F' Type Satellite Connector Kit	UK
SATC2	'F' Type Satellite Couplers	UK





## Care



- LCD Cleaner - Features an advanced formula that cleans without streaking, staining or dripping
- From tablets & laptops to TV monitors, you can expect a perfect clean every time as it contains no alcohol
- Quick & easy to use and includes a re-usable microfibre cloth
- CD/DVD Cleaner - Improves playback & prevents distortion & skipping



CKLCD



CKDVD

Product Code	Description
CKLCD	LCD Screen Cleaner 
CKDVD	CD/DVD Laser Lens Cleaner 

# Flexible Merchandising Solutions

At Ross we have a highly skilled design team committed to creating a wide array of point of sale and merchandising solutions. From counter top to fixed display and everything in between, we have the right tools to fit your business and will work with you to design, develop and produce engaging, vibrant and most importantly sales improving displays and fixtures.



## FSDU Displays

Perfect for trialling new lines or running seasonal promotions, these units are well made with reinforced shelving as standard. They feature vibrant graphics and are available in three or four shelf arrangements.



## Clip Strips

A space saving solution for display on gondola end or shelf corners.



## Fixed Display Stands

Robust yet flexible a great long term solution for improving visibility, showcasing the range in-store and aiding in the customers purchasing decisions.

- Available in 0.5m and 1m arrangements
- Flexible product placement
- Can be refreshed with new graphics and shelf edges or promotional headers



## CDU Displays

The classic impulse purchase POS staple adapted and re-imagined to take our home accessories models.

- Available in different colours and styles depending on what is offered within
- Can be made as a single or double shelved unit

The above is just a taster of some of the more popular ways in which we can support your business. We endeavour to create and distribute high quality POS arrangements to our retailer network throughout the year. We are also able to offer bespoke solutions. Feel free to contact your sales agent to discuss your requirements in more detail.

# Bespoke Sales Solutions

We pride ourselves in our ability to respond and adapt quickly to changing market conditions and bespoke customer requests. Our primary mission is to develop innovative, highly functional and safe products which are tailored to specific customer needs. As a global business we understand that tastes and requirements vary by territory and to this end are happy to help our customer base differentiate themselves if required. We are committed to working with you on initiatives including, but not limited to, the following:



## Product Adaptations and Customisations

We think we make some of the best products around, but fully understand that although we feel our products cover comprehensive customer needs, there will be occasions that arise where a change or adaptation would help fulfil a business case. If you would like to request a product amendment or customisation please contact your sales agent for more information.

## Retail Kit Bundles

We offer wall mounts, various AV cables, screen cleaners and other related accessories from our sister brands such as surge protectors by Masterplug. We can, if required, create bundles of these products packaged in a single retail ready box. If you have a bundling requirement please contact your sales agent for more information.



## Custom Packaging

We have a fully functional, highly skilled and quick response design team who are able to facilitate custom packaging, branding and artworks finished to very high standards and at short notice. If you feel you need bespoke packaging or branding then we are happy to facilitate this subject to an agreed minimum order quantity. If you have custom packaging or branding request please contact your sales agent for more information.



# Online

## News

Our latest products and developments

## Range Overview

Current product information in more detail

## Installation Videos

Learn how to install your products effortlessly

## TV Mount Finder

Find the right product to suit your needs

## CBM Container Calculator

Keep costs down by calculating efficient shipments

## Download -

Technical Data sheets

Instruction Manuals

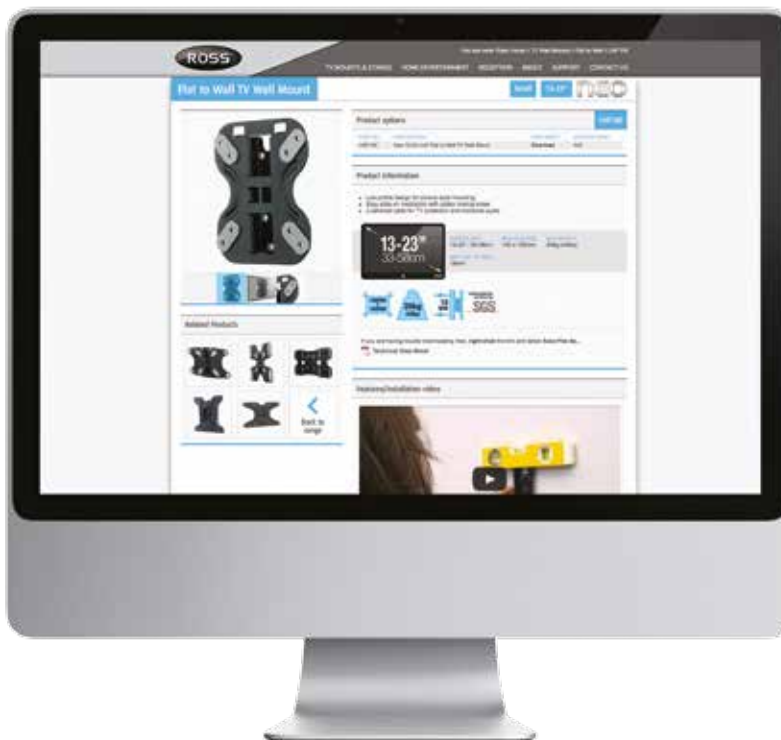
Image Database

E-Catalogue

Trade Price List

For further product information  
please visit our website

# www.ross.uk



Nexus Industries Ltd. Group company  
www.nexusinds.com

**A**

About Ross	5
Apple Cables	45
Audio Cables	44
Audio Jack	44
<b>AV Accessories</b>	<b>25-34</b>
AV Racks	31
AV Shelves	29-30

**C**

CD/DVD Laser Lens Cleaner	49
Ceiling Mounts	27
Certification	6
<b>Classic TV Mounts</b>	<b>17-20</b>
- Flat to Wall	<b>18</b>
- Turn &/or Tilt	<b>19</b>
- Full Motion	<b>20</b>
Coax Cable Connector Kit	46
Coaxial 'Y' Splitter	46
Coaxial Couplers	46
Coaxial Plugs	46
Corner TV Stands	37

**D**

Desk Mounts	26
Digital Indoor Aerial	47
Digital TV Aerial Kit	47

**E**

<b>Essentials TV Mount</b>	<b>21-24</b>
- Flat to Wall	<b>22</b>
- Turn &/or Tilt	<b>23</b>
- Full Motion	<b>24</b>
Ethical Policy	5

**F**

F/Satellite Cables	48
F/Satellite Connector	48
F/Satellite Connector Kit	48
F/Satellite Couplers	48

**H**

HDMI Cables	42
High Performance HDMI Cables	42
High Performance SCART Cable	43
<b>Home Entertainment Accessories</b>	<b>41-49</b>

**I**

In House Manufacturing	4
In House Testing	6

**K**

Kitchen Solutions	34
-------------------	----

**L**

LCD Screen Cleaner	49
Linear TV Stands	40

**N**

<b>NEO TV Mounts</b>	<b>9-16</b>
- Flat to Wall	<b>10</b>
- Turn &/or Tilt	<b>11-12</b>
- Full Motion	<b>13-15</b>

**O**

Oval TV Stands	39
----------------	----

**P**

Phono Cable	44
Power Packs	45
Prestige TV Stands	38
Projector Mounts	28

**R**

Reception & Distribution	47
--------------------------	----

**S**

SCART Cable	43
Signal Booster	47
Slimline TV Stands	36
Speaker Cable	44
Speaker Mounts	32
Sustainability	5

**T**

TV Coax Cables	46
TV Mount Accessories	33
TV Mount Ranges	8
<b>TV Stands</b>	<b>35-40</b>
- Corner TV Stands	<b>37</b>
- Linear TV Stands	<b>40</b>
- Oval TV Stands	<b>39</b>
- Prestige TV Stands	<b>38</b>
- Slimline TV Stands	<b>36</b>

**U**

USB Cables	45
USB Chargers	45

**V**

VESA	7
------	---

Product Code	Description	Page
35OAK	RECEPTION/DISTRIBUTION	47
4WSBC	RECEPTION/DISTRIBUTION	47
A30PCW1	USB CABLES/CHARGERS	45
ALCW1	USB CABLES/CHARGERS	45
AVR3400B	AV ACCESSORIES	31
AVR4400B	AV ACCESSORIES	31
AVR5400B	AV ACCESSORIES	31
CC2	TV COAX CABLES	46
CCA1050C	AV ACCESSORIES	33
CCK3	TV COAX CABLES	46
CKDVD	CARE	49
CKLCD	CARE	49
CM2XRT400	AV ACCESSORIES	27
CM2XRVT400	AV ACCESSORIES	27
CM2XST200	AV ACCESSORIES	27
CMRT400	AV ACCESSORIES	27
CMRVT400	AV ACCESSORIES	27
CMST200	AV ACCESSORIES	27
CP2	TV COAX CABLES	46
CPM01	AV ACCESSORIES	28
CPM02	AV ACCESSORIES	28
DME1DACMB	AV ACCESSORIES	26
DME1DACMS	AV ACCESSORIES	26
DME2DACMB	AV ACCESSORIES	26
DME2DACMS	AV ACCESSORIES	26
DMS1DACMG	AV ACCESSORIES	26
DMS1DACMS	AV ACCESSORIES	26
F3B1B70	TV FLOOR STANDS	36
F3B1B90	TV FLOOR STANDS	36
F3B1S70	TV FLOOR STANDS	36
F3B1S90	TV FLOOR STANDS	36
F3B2C100	TV FLOOR STANDS	38
F3B2C115	TV FLOOR STANDS	38
F3B3B115	TV FLOOR STANDS	37
F3B3B95	TV FLOOR STANDS	37
F3B3S115	TV FLOOR STANDS	37
F3B3S95	TV FLOOR STANDS	37
F3B4B95	TV FLOOR STANDS	39
F3B4S95	TV FLOOR STANDS	39
F3B5S115	TV FLOOR STANDS	40
F3B5S150	TV FLOOR STANDS	40
F3B5S90	TV FLOOR STANDS	40
F3F1B70	TV FLOOR STANDS	36
F3F1B90	TV FLOOR STANDS	36
F3F1S70	TV FLOOR STANDS	36
F3F1S90	TV FLOOR STANDS	36
F3F2C100	TV FLOOR STANDS	38

Product Code	Description	Page
F3F2C115	TV FLOOR STANDS	38
F3F3B155	TV FLOOR STANDS	37
F3F3B95	TV FLOOR STANDS	37
F3F3S115	TV FLOOR STANDS	37
F3F3S95	TV FLOOR STANDS	37
F3F4B95	TV FLOOR STANDS	39
F3F4S95	TV FLOOR STANDS	39
HDMI15	HDMI CABLES	42
HDMI3	HDMI CABLES	42
HDMI5	HDMI CABLES	42
HEC5	AUDIO CABLES	44
HPHDMI1	HDMI CABLES	42
HPHDMI3	HDMI CABLES	42
HPHDMIA2	HDMI CABLES	42
HPHDMIF2	HDMI CABLES	42
HPSC1	SCART CABLES	43
IAFLAT	RECEPTION/DISTRIBUTION	47
IALOOP	RECEPTION/DISTRIBUTION	47
LCDDA23	CLASSIC	20
LCDDA32	CLASSIC	20
LCDF23	CLASSIC	18
LCDF32	CLASSIC	18
LCDSA23	CLASSIC	19
LCDSA32	CLASSIC	19
LCDST23	CLASSIC	19
LCDST32	CLASSIC	19
LCDT23	CLASSIC	19
LCDT32	CLASSIC	19
LEF100	ESSENTIALS	22
LEF200	ESSENTIALS	22
LEF210	ESSENTIALS	22
LERTA400	ESSENTIALS	24
LERTA600	ESSENTIALS	24
LESA100	ESSENTIALS	23
LESA200	ESSENTIALS	23
LEST100	ESSENTIALS	23
LEST200	ESSENTIALS	23
LETA100	ESSENTIALS	24
LETA200	ESSENTIALS	24
LNDA100	NEO	13
LNDA120	NEO	13
LNDA200	NEO	13
LNf100	NEO	10
LNf120	NEO	10
LNf200	NEO	10
LNf240	NEO	10
LNLFM200E	NEO	14

Product Code	Description	Page
LNLT200E	NEO	14
LNRDSTA400	NEO	15
LNRDSTA600	NEO	15
LNRFM400	NEO	15
LNRFM600	NEO	15
LNRFM600XL	NEO	15
LNRFM800XL	NEO	15
LNRPT400	NEO	12
LNRPT600	NEO	12
LNRPT800	NEO	12
LNRTA400	NEO	15
LNRTA600	NEO	15
LNRTA800	NEO	15
LNRVT400	NEO	12
LNRVT600	NEO	12
LNRVT800	NEO	12
LNSA100	NEO	11
LNSA120	NEO	11
LNSA200	NEO	11
LNSA240	NEO	11
LNSRET400	NEO	12
LNSRET600	NEO	12
LNSRF400	NEO	10
LNSRF600	NEO	10
LNST100	NEO	11
LNST120	NEO	11
LNST200	NEO	11
LNST240	NEO	11
LNTA100	NEO	13
LNTA120	NEO	13
LNTA200	NEO	13
LNTA240	NEO	13
LPSRBT400	ESSENTIALS	23
LPSRBT600	ESSENTIALS	23
LPSRF400	CLASSIC	18
LPSRF600	CLASSIC	18
LPSRFS200	ESSENTIALS	22
LPSRFS400	ESSENTIALS	22
LPSRFS600	ESSENTIALS	22
LPSRVT200	ESSENTIALS	23
LPSRVT400	ESSENTIALS	23
LPSRVT420	ESSENTIALS	23
LPSRVT600	ESSENTIALS	23
LRF400	CLASSIC	18
LRF600	CLASSIC	18
LRF800	CLASSIC	18
LRT400	CLASSIC	19

Product Code	Description	Page
LRT600	CLASSIC	19
LRT800	CLASSIC	19
MWBRFSL	AV ACCESSORIES	34
MWBRFW	AV ACCESSORIES	34
PH3PH3/15	AUDIO CABLES	44
PHSMJ15	AUDIO CABLES	44
PL15	AUDIO CABLES	44
SATC2	F/SAT CABLES	48
SATCK3	F/SAT CABLES	48
SATFPLUG	F/SAT CABLES	48
SATL10	F/SAT CABLES	48
SATL15	F/SAT CABLES	48
SATL3	F/SAT CABLES	48
SATL5	F/SAT CABLES	48
SC15	SCART CABLES	43
SFNLU2	AV ACCESSORIES	32
SFNSU1	AV ACCESSORIES	32
SFNSU2	AV ACCESSORIES	32
SMHC	AV ACCESSORIES	32
SMNSB	AV ACCESSORIES	33
SMNSU	AV ACCESSORIES	32
SPW10	AUDIO CABLES	44
TVFL100	AV ACCESSORIES	34
TVLC10	TV COAX CABLES	46
TVLC15	TV COAX CABLES	46
TVLC3	TV COAX CABLES	46
TVLC5	TV COAX CABLES	46
TVSC2	TV COAX CABLES	46
TVSS	AV ACCESSORIES	33
TVUC100	AV ACCESSORIES	34
USB51CK12	USB CABLES/CHARGERS	45
USBDC21	USB CABLES/CHARGERS	45
USBMICC1	USB CABLES/CHARGERS	45
USBMINC1	USB CABLES/CHARGERS	45
USBPP2	USB CABLES/CHARGERS	45
USBPP52	USB CABLES/CHARGERS	45
USBSCC1	USB CABLES/CHARGERS	45
WMS1	AV ACCESSORIES	29
WMS2	AV ACCESSORIES	29
WMSB1	AV ACCESSORIES	29
WMSB1NDA2	AV ACCESSORIES	30
WMSB2	AV ACCESSORIES	29
WMSB2NDA2	AV ACCESSORIES	30
WMSG1	AV ACCESSORIES	29
WMSG1NDA2	AV ACCESSORIES	30
WMSG2	AV ACCESSORIES	29
WMSG2NDA2	AV ACCESSORIES	30



Part of the Nexus Industries Ltd. Group of Companies.



**UK Sales &  
Distribution Centre**

Nexus Industries Ltd, Nexus Distribution Centre  
Stafford Park 1, Telford, Shropshire  
England, TF3 3BD

Tel: +44 (0) 1952 238 100  
Fax: +44 (0) 1952 238 180  
Email: uk\_sales@nexusinds.com

**European  
Sales**

Nexus Industries GmbH  
Holstenplatz 20b, 22765  
Hamburg, Germany

Tel: +49 40 89066 8780  
Fax: +49 40 89066 87829  
Email: eu\_sales@nexusinds.com

**French  
Sales**

Luceco SAS France & Belux  
3 Rue de Courtalin, Magny Le Hongre 77700  
FRANCE & BELUX

Tel: +33 (0)7 88 29 56 59  
Fax: +33 (0)1 5731 74 19  
Email: fr\_sales@nexusinds.com

**Asia Pacific Sales,  
Manufacturing & Distribution**

No 1438, Jiachuang Road, Xiuzhou Industrial Park  
Jiaxing, Zhejiang, China  
P.C. 314031

Tel: +86 (0) 573 8357 0200  
Fax: +86 (0) 573 8357 0248  
Email: sales@nexus.cn

**North & South America  
Sales & Distribution**

Luceco Inc  
11050 W Little York Road, Building C-2  
Houston, TX 77041, USA

Tel: +1 281 978 2509  
Fax: +1 281 466 4620  
Email: us\_sales@nexusinds.com

**Middle East  
Sales**

Nexus Mid East Electrical LLC, Office 806  
Makateb Building, Port Saeed, Deira  
P O Box 118704, Dubai, UAE

Tel: +971 4 2500 636  
Fax: +971 4 2500 603  
Email: mea\_sales@nexusinds.com

**Head Office**

Nexus Industries Ltd, Caparo House, 103 Baker Street, London, United Kingdom, W1U 6LN  
Email: info@nexusinds.com

[www.ross.uk](http://www.ross.uk)