

LUCECO PROFILE

OCTOBER 2018

NEW

LUCECO PROFILE THE ESSENTIAL PROFESSIONAL LIGHTING PROFILE



PLEASE CALL OUR DEDICATED SALES TEAM FOR ANY ENQUIRIES



01952 238100



sales@luceco.com

FREE

Lighting Design Service



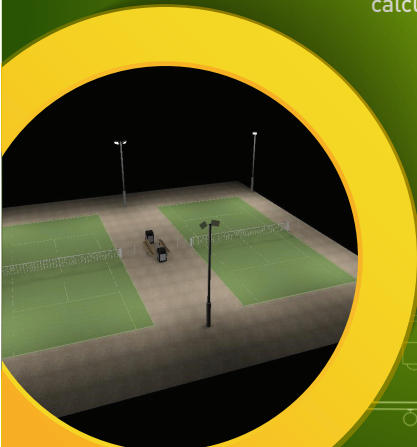
LUCECO

With over 100 years of combined lighting design experience, our expert team are on hand to provide advice and design solutions for any of your lighting projects, all designed to meet CIBSE lighting guidelines and the latest British standards.

As well as lighting design we can produce 'Return on Investment' calculations to show potential payback and energy savings for our proposal to your clients.

For more information please email us at:
lighting-design@luceco.com

Photometric data is also available where required.



PANELS
4 - 7



DOWNLIGHTS
8 - 13



BULKHEADS
14 - 17



INDUSTRIAL
18 - 19



LINEAR
20 - 21



EMERGENCY
22 - 23



FLOODLIGHTS
24 - 25



INSPECTION
& WORK LIGHTS
26 - 27



EXTERIOR DECORATIVE
28 - 30



SOLAR
32 - 33



LAMPS & TUBES
34 - 37



LIGHTING CONTROLS
38



Panels

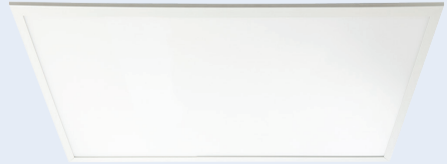
One of the most popular products in the LED portfolio, our comprehensive panel range is suitable for a wide range of applications including offices, education and commercial spaces. Available in all sizes, edgelit or backlit we also have UGR19 compliant options.



Eco LuxPanel

- ✓ Edgelit LED light source
- ✓ White aluminium frame with polycarbonate TPb diffuser
- ✓ Plug and play driver, Luceco emergency pack compatible
- ✓ Range of mounting accessories available for solid or plasterboard ceilings

Upto
85 Lm/W



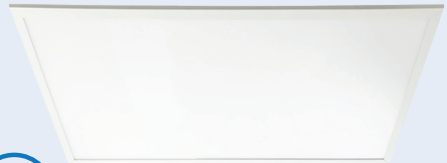
*Emergency Pack = LED3EP80

| CAT NO. | DRIVER | LUMENS | WATTAGE | DIMENSIONS | PACK QTY |
|----------|----------|--------|---------|--------------|----------|
| E66L28N | Standard | 2800 | 33W | 595 x 595mm | 5 |
| E66D28N | Dimmable | 2800 | 33W | 595 x 595mm | 5 |
| E66L35N | Standard | 3500 | 41W | 595 x 595mm | 5 |
| E66D35N | Dimmable | 3500 | 41W | 595 x 595mm | 5 |
| E612L50N | Standard | 5000 | 60W | 595 x 1195mm | 3 |
| E612D50N | Dimmable | 5000 | 60W | 595 x 1195mm | 3 |

LuxPanel Edgelit Framed

- ✓ Edgelit LED light source
- ✓ White aluminium frame with polycarbonate TPb diffuser
- ✓ Plug and play driver, Luceco emergency pack compatible
- ✓ Range of mounting accessories available for solid or plasterboard ceilings

Upto
112 Lm/W



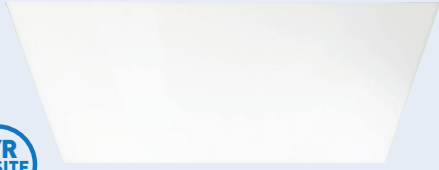
*Emergency Pack = LED3EP80

| CAT NO. | DRIVER | LUMENS | WATTAGE | DIMENSIONS | PACK QTY |
|-------------|----------|--------|---------|--------------|----------|
| LP66W28S40 | Standard | 2800 | 25W | 595 x 595mm | 4 |
| LP66W28D40 | Dimmable | 2800 | 25W | 595 x 595mm | 4 |
| LP66W35S40 | Standard | 3500 | 32W | 595 x 595mm | 4 |
| LP66W35D40 | Dimmable | 3500 | 32W | 595 x 595mm | 4 |
| LP612W50S40 | Standard | 5000 | 60W | 595 x 1195mm | 3 |
| LP612W50D40 | Dimmable | 5000 | 60W | 595 x 1195mm | 3 |

LuxPanel Backlit Frameless

- ✓ Market leading lumens per watt performance
- ✓ Recessed mounted luminaire with Backlit LED light source
- ✓ White aluminium frame with polycarbonate TPb diffuser
- ✓ Plug and play driver, Luceco emergency pack compatible

Up to
152 Llm/W



*Emergency Pack = LED3EP80

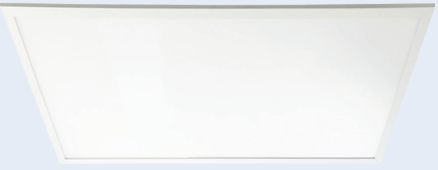
| CAT NO. | DRIVER | LUMENS | WATTAGE | DIMENSIONS | PACK QTY |
|--------------|----------|--------|---------|--------------|----------|
| LPB66H25S40 | Standard | 2500 | 17W | 595 x 595mm | 3 |
| LPB66H25D40 | Dimmable | 2500 | 17W | 595 x 595mm | 3 |
| LPB66H35S40 | Standard | 3500 | 23W | 595 x 595mm | 3 |
| LPB66H35D40 | Dimmable | 3500 | 23W | 595 x 595mm | 3 |
| LPB612H50S40 | Standard | 5000 | 33W | 595 x 1195mm | 3 |
| LPB612H50D40 | Dimmable | 5000 | 33W | 595 x 1195mm | 3 |
| LPB612H70S40 | Standard | 7000 | 47W | 595 x 1195mm | 3 |
| LPB612H70D40 | Dimmable | 7000 | 47W | 595 x 1195mm | 3 |



LuxPanel Extra Edgelit Framed

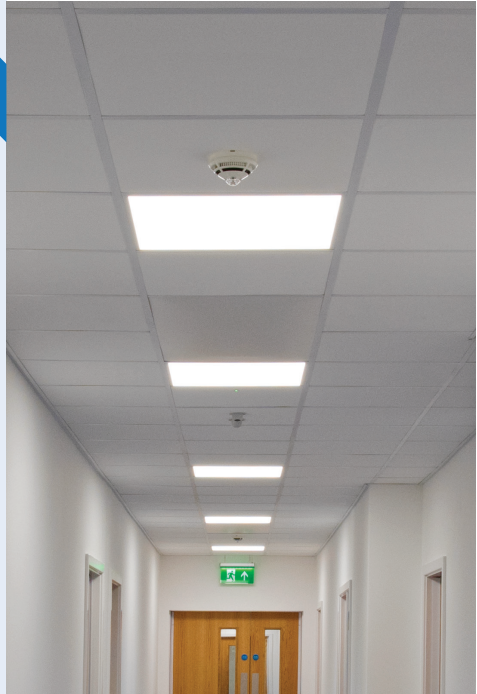
- ✓ UGR19 compliant Edgelit LED light source
- ✓ White aluminium frame with polycarbonate TPa diffuser
- ✓ Plug and play driver, Luceco emergency pack compatible
- ✓ Range of mounting accessories available for solid or plasterboard ceilings

UGR19
Compliant



*Emergency Pack = LED3EP80

| CAT NO. | DRIVER | LUMENS | WATTAGE | DIMENSIONS | PACK QTY |
|-------------|----------|--------|---------|-------------|----------|
| LPX66W28S40 | Standard | 2800 | 23W | 595 x 595mm | 4 |
| LPX66W28D40 | Dimmable | 2800 | 23W | 595 x 595mm | 4 |
| LPX66W35S40 | Standard | 3500 | 28W | 595 x 595mm | 4 |
| LPX66W35D40 | Dimmable | 3500 | 28W | 595 x 595mm | 4 |



Delta LuxPanel

- ✓ Recess mounted luminaire with a direct/indirect distribution
- ✓ White aluminium frame with curved central diffusor
- ✓ Plug and play driver.
- ✓ Luceco emergency pack compatible

595 x 595mm



NEW



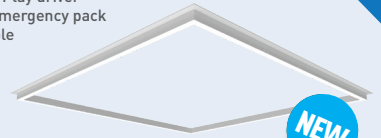
*Emergency Pack = LED3EP80

| CAT NO. | DRIVER | LUMENS | WATTAGE | PACK QTY |
|-------------|----------|--------|---------|----------|
| LPD66W32L40 | Standard | 3200 | 33W | 3 |
| LPD66W32D40 | Dimmable | 3200 | 33W | 3 |

LuxFrame

- ✓ Architectural semi recessed luminaire providing a decorative frame of light
- ✓ Fire barrier is maintained as ceiling tile is in place
- ✓ Plug and Play driver
- ✓ Luceco emergency pack compatible

595 x 595mm



NEW



*Emergency Pack = LED3EP80

| CAT NO. | DRIVER | LUMENS | WATTAGE | PACK QTY |
|--------------|----------|--------|---------|----------|
| LPSF66W20S40 | Standard | 2000 | 22W | 5 |
| LPSF66W20D40 | Dimmable | 2000 | 22W | 5 |
| LPSF66W28S40 | Standard | 2800 | 31W | 5 |
| LPSF66W28D40 | Dimmable | 2800 | 31W | 5 |

Surface Mounting Frame

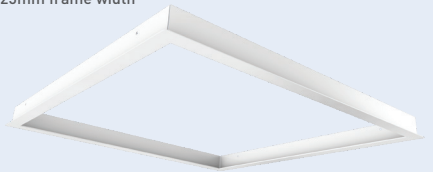
- ✓ Surface mounting frame for Edgelit Framed panels
- ✓ Space for driver and emergency pack
- ✓ 10mm frame width



| CAT NO. | DIMENSIONS | WEIGHT |
|---------|-------------------|--------|
| LPP66W | 602 x 602 x 66mm | 1.8kg |
| LPP612W | 1202 x 602 x 66mm | 2.8kg |

Recess Frame

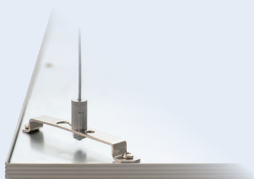
- ✓ For use with all Luxpanels
- ✓ Suitable for installation into plasterboard ceilings up to 15mm thick
- ✓ 25mm frame width



| CAT NO. | DIMENSIONS | WEIGHT |
|--------------|--------------|--------|
| LPPF66SCRFF | 595 x 595mm | 1.6kg |
| LPPF612SCRFF | 1195 x 595mm | 3.2kg |

Wire Suspension Kit

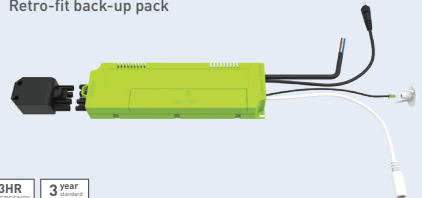
- ✓ Wire suspension kit (4 part kit) (For Edgelit Framed only)
- ✓ Compatible with 600x600mm and 1200x600mm Edgelit Framed
- ✓ Can also be used with surface mounting frames (LPPF66W and LPPF612W)



| CAT NO. | DIMENSIONS |
|---------|--------------------------|
| LWSK415 | Max. Suspension - 1500mm |

Emergency Pack

- ✓ Compatible with all Luceco Panels and Carbon downlights
- ✓ Supplied with all required connections and mini bezel for charge indicator
- ✓ Replaceable battery
- ✓ Retro-fit back-up pack



| CAT NO. | WATTAGE | PACK QTY |
|----------|---------|----------|
| LED3EP80 | 4W | 21 |

LuxFrame





Downlights

Integrated LED downlights are fast becoming a core category and staple product for many applications.

Offering a range that can be used for both residential or commercial projects the FType leads the way with its lower wattage yet higher lumen output.

F-ECO Fixed

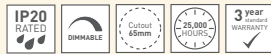
- ✓ LED integrated downlight with clip & fit terminal block
- ✓ Fully tested to 30,60 and 90 min fire rating
- ✓ Suitable for residential applications
- ✓ Choice of flat bezel finishes



| CAT NO. | LUMENS | WATTAGE | COLOUR TEMP | BEAM ANGLE | BEZEL COLOUR | PACK QTY |
|------------|--------|---------|-------------|------------|-----------------|----------|
| EFTE45W30 | 450 | 5W | 3000K | 60° | White | 50 |
| EFTE45W40 | 450 | 5W | 4000K | 60° | White | 50 |
| EFTE45BS30 | 450 | 5W | 3000K | 60° | Brushed Steel | 50 |
| EFTE45BS40 | 450 | 5W | 4000K | 60° | Brushed Steel | 50 |
| EFTE45PC30 | 450 | 5W | 3000K | 60° | Polished Chrome | 50 |
| EFTE45PC40 | 450 | 5W | 4000K | 60° | Polished Chrome | 50 |

F-ECO Adjustable

- ✓ LED integrated adjustable downlight with clip & fit terminal block
- ✓ Fully tested to 30,60 and 90 min fire rating
- ✓ Suitable for residential applications
- ✓ Tilt angle of upto 20 degree



| CAT NO. | LUMENS | WATTAGE | COLOUR TEMP | BEAM ANGLE | BEZEL COLOUR | PACK QTY |
|-------------|--------|---------|-------------|------------|-----------------|----------|
| EFTE45AW30 | 425 | 5W | 3000K | 60° | White | 50 |
| EFTE45AW40 | 425 | 5W | 4000K | 60° | White | 50 |
| EFTE45ABS30 | 425 | 5W | 3000K | 60° | Brushed Steel | 50 |
| EFTE45ABS40 | 425 | 5W | 4000K | 60° | Brushed Steel | 50 |
| EFTE45APC30 | 425 | 5W | 3000K | 60° | Polished Chrome | 50 |
| EFTE45APC40 | 425 | 5W | 4000K | 60° | Polished Chrome | 50 |

FTYPE™

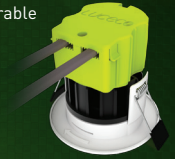
FLAWLESS FUNCTIONALITY

100
 UPTO LUMENS PER WATT
**LED FIRE RATED
 DOWNLIGHT**



Clip&Fit™

Insulation coverable clip & fit driver ensures quick and easy installation



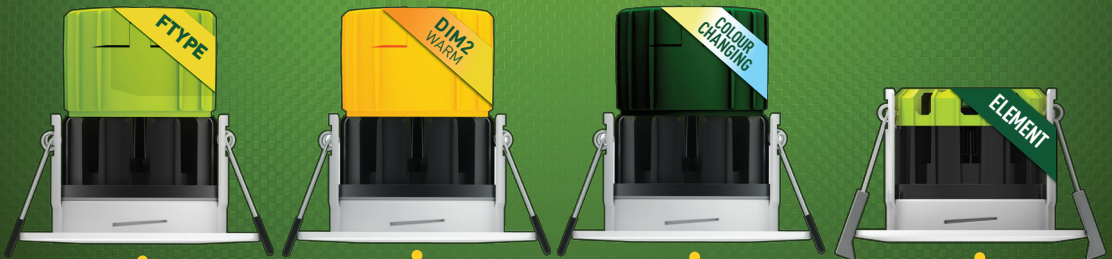
Speedfit™

Speed fit loop in/out push fit terminals for solid or stranded cable



Crystaline Optics™

Wide 60° baffled back lens delivers crystal clear low glare illumination



🔥 6W - 600 Lumens
 🔥 8W - 760 Lumens

SUPER COSY COSY
 2200K 2700K

3000K WARM WHITE 4000K NEUTRAL WHITE 4500K COOL WHITE

Remote Driver

MORE features, LESS installation time

Designed and engineered with **true performance** at its heart.

FType Fixed

- ✓ Super efficient LED downlight with speed-fit terminal block
- ✓ Less wattage, more lumen output
- ✓ Fully tested to 30, 60 and 90 min fire rating and insulation coverable
- ✓ Ideal for domestic or commercial applications
- ✓ Supplied with True Matt White flat bezel



Upto
100 Llm/W



| CAT NO. | LUMENS | WATTAGE | COLOUR TEMP | PACK QTY |
|----------|--------|---------|-------------|----------|
| EFT60W30 | 600 | 6W | 3000K | 20 |
| EFT60W40 | 600 | 6W | 4000K | 20 |
| EFT80W30 | 760 | 8W | 3000K | 20 |
| EFT80W40 | 760 | 8W | 4000K | 20 |

FType Adjustable

- ✓ Super efficient LED downlight with speed-fit terminal block
- ✓ Fully tested to 30, 60 and 90 min fire rating and insulation coverable
- ✓ Tilt angle of upto 20 degrees
- ✓ Supplied with True Matt White flat bezel



100 Llm/W



NEW

| CAT NO. | LUMENS | WATTAGE | COLOUR TEMP | PACK QTY |
|-----------|--------|---------|-------------|----------|
| EFTA60W30 | 600 | 6W | 3000K | 20 |
| EFTA60W40 | 600 | 6W | 4000K | 20 |

FType Adjustable Bezel Accessories

| CAT NO. | COLOUR | FINISH | PACK QTY |
|----------|--------|--------|----------|
| EFTABZ** | - | Flat | 10 |

*Add PC, BK or BS to the code for your required finish

FType Dim2Warm

- ✓ Dim2Warm technology when dimmed the colour of the light gets warmer representing halogen
- ✓ Fully tested to 30, 60 and 90 min fire rating and insulation coverable
- ✓ Choice of interchangeable bezel types and finishes



DIM2
WARM



NEW

| CAT NO. | LUMENS | WATTAGE | COLOUR TEMP | PACK QTY |
|---------|--------|---------|--------------|----------|
| EFTD2W | 460 | 6W | 2200 - 2700K | 20 |

FType Colour Changing

- ✓ 3 step colour change using standard light switch 3000K, 4000K or 6500K
- ✓ Fully tested to 30, 60 and 90 min fire rating and insulation coverable
- ✓ Colour temperature change at the flick of a switch
- ✓ Choice of interchangeable bezel types and finishes



COLOUR
CHANGING



NEW

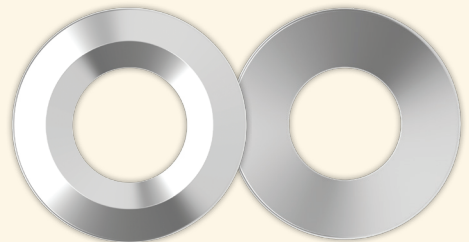
| CAT NO. | LUMENS | WATTAGE | COLOUR TEMP | PACK QTY |
|----------|--------|---------|-------------|----------|
| EFT60WCC | 600 | 6W | 3000-6500K | 20 |

FType Bezel Accessories

- ✓ Interchangeable flat and bevelled bezels available in a variety of finishes.

| CAT NO. | COLOUR | FINISH | PACK QTY |
|-----------|-----------------|--------|----------|
| EFTBZFGW | Gloss White | Flat | 10 |
| EFTBZFPC | Polished Chrome | Flat | 10 |
| EFTBZFBBS | Brushed Steel | Flat | 10 |
| EFTBZFBN | Black Nickel | Flat | 10 |
| EFTBZFBK | Black | Flat | 10 |

| CAT NO. | COLOUR | FINISH | PACK QTY |
|---------|-----------------|----------|----------|
| EFTBZGW | Gloss White | Bevelled | 10 |
| EFTBZPC | Polished Chrome | Bevelled | 10 |
| EFTBZBS | Brushed Steel | Bevelled | 10 |
| EFTBZBN | Black Nickel | Bevelled | 10 |
| EFTBZBK | Black | Bevelled | 10 |

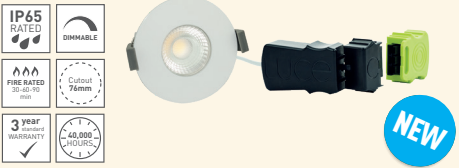


Gloss White (GW) Polished Chrome (PC) Brushed Steel (BS) Black Nickel (BN) Black (BK)

Element Fixed

REMOVABLE CONNECTOR

- ✓ Fire rated LED downlight with first fix / second fix removable connector
- ✓ Shallow height (54mm) for use in small ceiling voids
- ✓ Choice of interchangeable bezel types and finishes, supplied with Matt White bezel
- ✓ Remote Driver

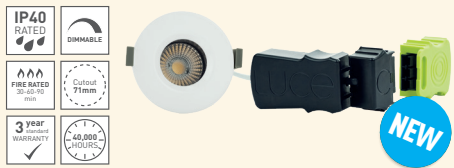


| CAT NO. | LUMENS | WATTAGE | COLOUR TEMP | PACK QTY |
|------------|--------|---------|-------------|----------|
| LDEF8W8D30 | 800 | 8W | 3000K | 20 |
| LDEF8W8D40 | 800 | 8W | 4000K | 20 |

Element Regressed

REMOVABLE CONNECTOR

- ✓ Fire rated LED downlight with first fix / second fix removable connector
- ✓ Regressed design to offer low glare illumination
- ✓ Shallow height (54mm) for use in small ceiling voids
- ✓ Supplied with Matt White bezel
- ✓ Remote Driver

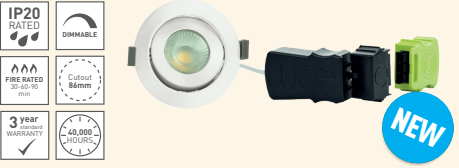


| CAT NO. | LUMENS | WATTAGE | COLOUR TEMP | PACK QTY |
|------------|--------|---------|-------------|----------|
| LDER7W6D30 | 600 | 7W | 3000K | 20 |
| LDER7W6D40 | 600 | 7W | 4000K | 20 |

Element Adjustable

REMOVABLE CONNECTOR

- ✓ Fire rated LED downlight with first fix / second fix removable connector
- ✓ Tilt angle of upto 20 degrees
- ✓ Choice of interchangeable bezel types and finishes, supplied with no bezel as standard
- ✓ Remote Driver



| CAT NO. | LUMENS | WATTAGE | COLOUR TEMP | PACK QTY |
|------------|--------|---------|-------------|----------|
| LDEA9W8D30 | 800 | 8W | 3000K | 20 |
| LDEA9W8D40 | 800 | 8W | 4000K | 20 |

Element Bezel Accessories

- ✓ Interchangeable flat and bevelled bezels available in a variety of colours and finishes (for Fixed and Adjustable versions only)

Fixed

| CAT NO. | FINISH | COLOUR | PACK QTY |
|-----------|--------|-----------------|----------|
| LDEFBZFGW | Flat | Gloss White | 10 |
| LDEFBZFPC | Flat | Polished Chrome | 10 |
| LDEFBZFBS | Flat | Brushed Steel | 10 |
| LDEFBZFBN | Flat | Black Nickel | 10 |
| LDEFBZFBK | Flat | Black | 10 |

Adjustable

| CAT NO. | FINISH | COLOUR | PACK QTY |
|-----------|--------|-----------------|----------|
| LDEABZFMW | Flat | Matt White | 10 |
| LDEABZFPC | Flat | Polished Chrome | 10 |
| LDEABZFBS | Flat | Brushed Steel | 10 |

Integrated Adjustable Downlight

- ✓ Adjustable LED downlight with low glare illumination
- ✓ Compact design ideal for limited ceiling space
- ✓ Interchangeable white and chrome bezels supplied



| CAT NO. | LUMENS | WATTAGE | COLOUR TEMP | PACK QTY |
|-----------|--------|---------|-------------|----------|
| EDLA45D30 | 450 | 7W | 3000K | 36 |
| EDLA45D40 | 480 | 7W | 4000K | 36 |



Fixed Fire Rated GU10 Downlight

- ✓ Tool-less access & Loop in Loop out terminals
- ✓ Fully tested to 30, 60 and 90 min fire rating
- ✓ GU10 lamp holder (GU10 lamp not included)



| CAT NO. | TYPE | COLOUR | CUTOUT | PACK QTY |
|-----------|-------|-----------------|--------|----------|
| EFRDGUFWH | Fixed | White | 76mm | 20 |
| EFRDGUFBS | Fixed | Brushed Steel | 76mm | 20 |
| EFDGUFPC | Fixed | Polished Chrome | 76mm | 20 |



FIXED

IP65 Fire Rated GU10 Downlight

- ✓ Tool-less access & Loop in Loop out terminals
- ✓ Fully tested to 30, 60 and 90 min fire rating
- ✓ GU10 lamp holder (GU10 lamp not included)



| CAT NO. | TYPE | COLOUR | CUTOUT | PACK QTY |
|-----------|------|-----------------|--------|----------|
| EFDGUIPWH | IP65 | White | 72mm | 20 |
| EFDGUIPBS | IP65 | Brushed Steel | 72mm | 20 |
| EFDGUIPPC | IP65 | Polished Chrome | 72mm | 20 |



IP65 RATED

Adjustable Fire Rated GU10 Downlight

- ✓ Tool-less access & Loop in Loop out terminals
- ✓ Fully tested to 30, 60 and 90 min fire rating
- ✓ GU10 lamp holder (GU10 lamp not included)



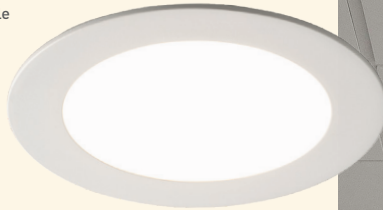
| CAT NO. | TYPE | COLOUR | CUTOUT | PACK QTY |
|----------|------------|-----------------|--------|----------|
| EFDGUAWH | Adjustable | White | 82mm | 20 |
| EFDGUABS | Adjustable | Brushed Steel | 82mm | 20 |
| EFDGUAPC | Adjustable | Polished Chrome | 82mm | 20 |



ADJUSTABLE

Eco Circular LuxPanel

- ✓ White aluminium frame with polycarbonate TPb diffuser
- ✓ Slimline design ideal for low ceiling voids
- ✓ Suitable for plasterboard or suspended ceiling systems
- ✓ Plug and Play driver
- ✓ Luceco emergency pack compatible



*Emergency Pack = LED3EP80

| CAT NO. | DRIVER | LUMENS | WATTAGE | CUTOUT | COLOUR TEMP | PACK QTY |
|-------------|----------|--------|---------|--------|-------------|----------|
| ELP12W6L30 | Standard | 360 | 6W | 110mm | 3000K | 5 |
| ELP12W6L40 | Standard | 360 | 6W | 110mm | 4000K | 5 |
| ELP15W9L30 | Standard | 630 | 9W | 130mm | 3000K | 5 |
| ELP15W9L40 | Standard | 630 | 9W | 130mm | 4000K | 5 |
| ELP17W12L30 | Standard | 900 | 12W | 160mm | 3000K | 5 |
| ELP17W12L40 | Standard | 900 | 12W | 160mm | 4000K | 5 |
| ELP22W18L30 | Standard | 1530 | 18W | 210mm | 3000K | 5 |
| ELP22W18L40 | Standard | 1530 | 18W | 210mm | 4000K | 5 |
| ELP30W24L30 | Standard | 2040 | 24W | 280mm | 3000K | 5 |
| ELP30W24L40 | Standard | 2040 | 24W | 280mm | 4000K | 5 |

| CAT NO. | DRIVER | LUMENS | WATTAGE | CUTOUT | COLOUR TEMP | PACK QTY |
|-------------|----------|--------|---------|--------|-------------|----------|
| ELP12W6D30 | Dimmable | 360 | 6W | 110mm | 3000K | 5 |
| ELP12W6D40 | Dimmable | 360 | 6W | 100mm | 4000K | 5 |
| ELP15W9D30 | Dimmable | 630 | 9W | 130mm | 3000K | 5 |
| ELP15W9D40 | Dimmable | 630 | 9W | 130mm | 4000K | 5 |
| ELP17W12D30 | Dimmable | 900 | 12W | 160mm | 3000K | 5 |
| ELP17W12D40 | Dimmable | 900 | 12W | 160mm | 4000K | 5 |
| ELP22W18D30 | Dimmable | 1530 | 18W | 210mm | 3000K | 5 |
| ELP22W18D40 | Dimmable | 1530 | 18W | 210mm | 4000K | 5 |
| ELP30W24D30 | Dimmable | 2040 | 24W | 280mm | 3000K | 5 |
| ELP30W24D40 | Dimmable | 2040 | 24W | 280mm | 4000K | 5 |



Carbon Downlight

- ✓ Commercial LED downlight with plug and play driver
- ✓ Polycarbonate body with opal diffuser for uniform appearance
- ✓ Recess mounted suitable for plasterboard or suspended ceilings
- ✓ Luceco emergency pack compatible

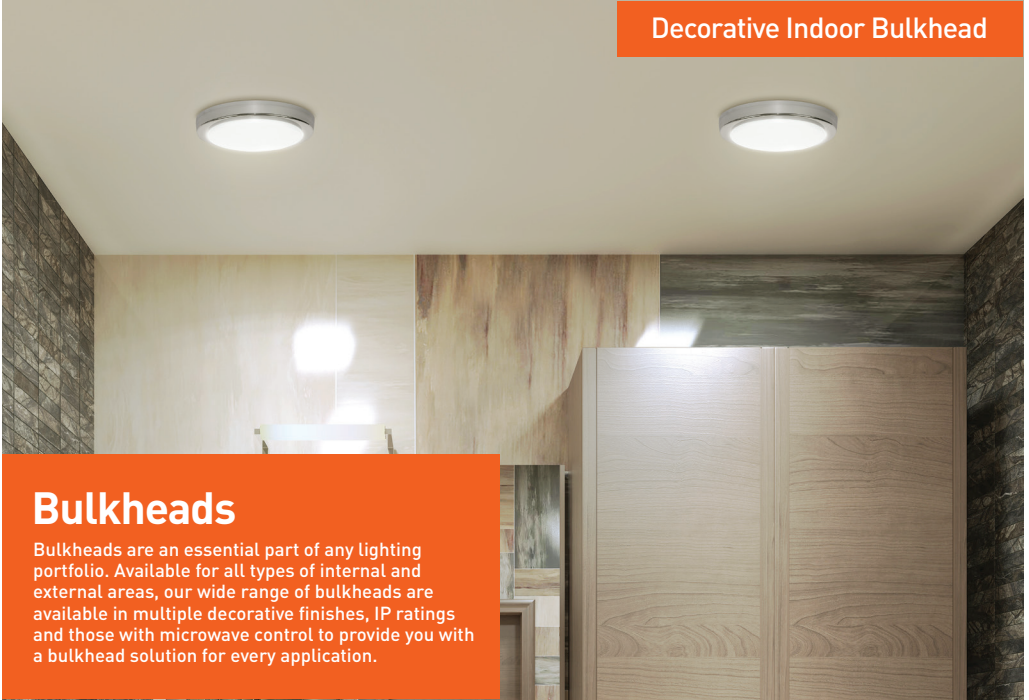


*Emergency Pack = LED3EP80

| CAT NO. | DRIVER | LUMENS | WATTAGE | CUTOUT | PACK QTY |
|----------|----------|--------|---------|--------|----------|
| LBDL4S40 | Standard | 1000 | 11W | 120mm | 12 |
| LBDL4D40 | Dimmable | 1000 | 11W | 120mm | 12 |
| LBDL6S40 | Standard | 1500 | 15.5W | 175mm | 12 |
| LBDL6D40 | Dimmable | 1500 | 15.5W | 175mm | 12 |
| LBDL8S40 | Standard | 2000 | 22W | 210mm | 12 |
| LBDL8D40 | Dimmable | 2000 | 22W | 210 mm | 12 |



Decorative Indoor Bulkhead

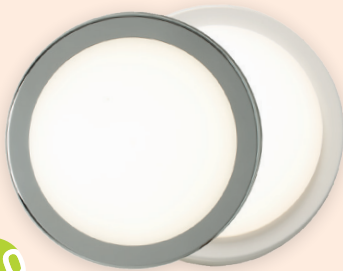


Bulkheads

Bulkheads are an essential part of any lighting portfolio. Available for all types of internal and external areas, our wide range of bulkheads are available in multiple decorative finishes, IP ratings and those with microwave control to provide you with a bulkhead solution for every application.

Decorative Indoor Bulkhead

- ✓ Decorative interior residential bulkhead ideal for bathroom areas
- ✓ Supplied with White and Polished Chrome interchangeable bezels
- ✓ Polycarbonate housing



ECO



| CAT NO. | LUMENS | WATTAGE | SIZE | PACK QTY |
|----------|--------|---------|--------|----------|
| EBH22540 | 1300 | 14W | Ø220mm | 6 |
| EBH28540 | 1650 | 17W | Ø280mm | 6 |

Sierra Bulkhead

- ✓ Decorative interior bulkhead ideal for commercial applications
- ✓ Polished Chrome trim accessory available, White as standard
- ✓ Polycarbonate base and diffuser for increased durability
- ✓ Microwave control and emergency versions available



NEW

| CAT NO. | LUMENS | WATTAGE | DRIVER | PACK QTY |
|----------------|--------|---------|-----------|----------|
| LBSR33W20S40 | 2000 | 24W | Standard | 5 |
| LBSR33W20E40 | 2000 | 24W | Emergency | 5 |
| LBSR33W20S40MW | 2000 | 24W | Microwave | 5 |
| LBSR33W20E40MW | 2000 | 24W | Em. MW | 5 |

Accessories

| CAT NO. | DESCRIPTION |
|---------|----------------------|
| LBSRTPC | Polished Chrome Trim |

Atlas Bulkhead

- ✓ Decorative bulkhead for internal or external applications including optional accessories
- ✓ High impact polycarbonate housing
- ✓ Surface mounting luminaire with 4 side and 1 rear conduit entry points
- ✓ Microwave control and emergency versions available
- ✓ Ø317mm diameter body

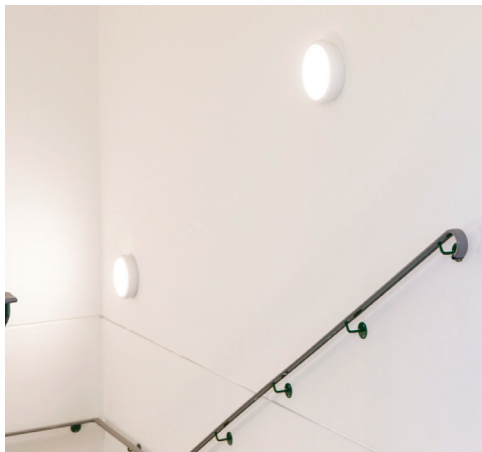


Low Output

| CAT NO. | LUMENS | WATTAGE | DRIVER | PACK QTY |
|-------------|--------|---------|-----------|----------|
| LBH154K | 1250 | 14W | Standard | 5 |
| LBH154K3M | 1250 | 14W | Emergency | 5 |
| LBH154KMW | 1250 | 14W | Microwave | 5 |
| LBH154KMW3M | 1250 | 14W | Em. MW | 5 |

High Output

| CAT NO. | LUMENS | WATTAGE | DRIVER | PACK QTY |
|-------------|--------|---------|-----------|----------|
| LBH214K | 2100 | 24W | Standard | 5 |
| LBH214K3M | 2100 | 24W | Emergency | 5 |
| LBH214KMW | 2100 | 24W | Microwave | 5 |
| LBH214KMW3M | 2100 | 24W | Em. MW | 5 |



Atlas Bulkhead Accessories - Metal

- ✓ For use with Atlas Bulkhead
- ✓ Comes with front and back covers, with tamper proof screws
- ✓ All die-cast aluminium accessories are finished in RAL7021



| CAT NO. | DESCRIPTION | DIMENSIONS |
|-----------|--------------------|------------|
| LBH154AMP | Metal Standard | 341x110mm |
| LBH154AME | Metal Eyelid | 341x110mm |
| LBH154AMS | Metal Split Eyelid | 341x110mm |
| LBH154AMG | Metal Grille | 341x110mm |



Mosi Bulkhead



Mosi Bulkhead

- ✓ Bulkhead for internal or external applications
- ✓ Polycarbonate base and diffuser for increased durability
- ✓ Surface mounting luminaire with 4 side and 1 rear conduit entry points
- ✓ Microwave control and emergency versions available



Round

| CAT NO. | LUMENS | WATTAGE | DRIVER | SIZE |
|----------------|--------|---------|-----------|--------|
| LBM200B7S40 | 735 | 7W | Standard | Ø200mm |
| LBM200W7S40 | 735 | 7W | Standard | Ø200mm |
| LBM290B11S40 | 1150 | 11W | Standard | Ø290mm |
| LBM290B11S40MW | 1150 | 12W | Microwave | Ø290mm |
| LBM290B11E40 | 1150 | 12W | Emergency | Ø290mm |
| LBM290B11E40MW | 1150 | 12W | MWave/Em | Ø290mm |
| LBM290W11S40 | 1150 | 11W | Standard | Ø290mm |
| LBM290W11S40MW | 1150 | 12W | Microwave | Ø290mm |
| LBM290W11E40 | 1150 | 12W | Emergency | Ø290mm |
| LBM290W11E40MW | 1150 | 12W | MWave/Em | Ø290mm |

Square

| CAT NO. | LUMENS | WATTAGE | DRIVER | SIZE | PACK QTY |
|---------------|--------|---------|-----------|--------------------|----------|
| LBM22B7S40 | 735 | 7W | Standard | 190mm ² | 8 |
| LBM22W7S40 | 735 | 7W | Standard | 190mm ² | 8 |
| LBM33B11S40 | 1150 | 11W | Standard | 280mm ² | 5 |
| LBM33B11S40MW | 1150 | 12W | Microwave | 280mm ² | 5 |
| LBM33B11E40 | 1150 | 12W | Emergency | 280mm ² | 5 |
| LBM33B11E40MW | 1150 | 12W | MWave/Em | 280mm ² | 5 |
| LBM33W11S40 | 1150 | 11W | Standard | 280mm ² | 5 |
| LBM33W11S40MW | 1150 | 12W | Microwave | 280mm ² | 5 |
| LBM33W11E40 | 1150 | 12W | Emergency | 280mm ² | 5 |
| LBM33W11E40MW | 1150 | 12W | MWave/Em | 280mm ² | 5 |

*'B' = Black / 'W' = White

Storm Bulkhead

- ✓ Square bulkhead for internal or external use ideal for replacing A60 luminaires
- ✓ High impact polycarbonate housing
- ✓ Rear and multiple side entry cables points to fit all installations
- ✓ Suitable for 230V and 110V use



NEW



| CAT NO. | LUMENS | WATTAGE | DRIVER | PACK QTY |
|---------|--------|---------|----------|----------|
| LBS1G4 | 400 | 4.5W | Standard | 18 |

Storm Bulkhead

- ✓ Rectangular bulkhead for internal or external use ideal for replacing A60 luminaires
- ✓ High impact polycarbonate housing
- ✓ Rear and multiple side entry cables points to fit all installations
- ✓ Suitable for 230V and 110V use



NEW



| CAT NO. | LUMENS | WATTAGE | DRIVER | PACK QTY |
|----------|--------|---------|-----------|----------|
| LBS2G8 | 750 | 7W | Standard | 12 |
| LBS2G8MW | 750 | 7.5W | Microwave | 12 |

IP54 Round Bulkhead

- ✓ Adjustable PIR option
- ✓ Easy quick installation
- ✓ Supplied with interchangeable Black and White bezels



ECO



| CAT NO. | LUMENS | WATTAGE | TYPE | SIZE | PACK QTY |
|-----------|--------|---------|----------|--------|----------|
| EBE5R40 | 450 | 5.5W | Standard | Ø160mm | 24 |
| EBER10S40 | 700 | 10W | Standard | Ø215mm | 12 |
| EBER10P40 | 700 | 10W | PIR | Ø215mm | 12 |

IP54 Round Eyelid Bulkhead

- ✓ Adjustable PIR option
- ✓ Easy quick installation
- ✓ Supplied with interchangeable Black and White bezels



ECO



| CAT NO. | LUMENS | WATTAGE | TYPE | SIZE | PACK QTY |
|-----------|--------|---------|----------|--------|----------|
| EBEE10S40 | 400 | 10W | Standard | Ø215mm | 12 |
| EBEE10P40 | 400 | 10W | PIR | Ø215mm | 12 |

IP54 Oval Mini Bulkhead

- ✓ Impact resistant Polycarbonate
- ✓ Easy quick installation



ECO



| CAT NO. | LUMENS | WATTAGE | TYPE | SIZE | PACK QTY |
|----------|--------|---------|----------|----------|----------|
| EBE5040B | 450 | 5.5W | Standard | 169x76mm | 24 |
| EBE5040W | 450 | 5.5W | Standard | 169x76mm | 24 |

*Not supplied with interchangeable bezels

IP54 Oval Bulkhead

- ✓ Adjustable PIR option
- ✓ Easy quick installation
- ✓ Supplied with interchangeable Black and White bezels



ECO



| CAT NO. | LUMENS | WATTAGE | TYPE | SIZE | PACK QTY |
|-----------|--------|---------|----------|-----------|----------|
| EBE010S40 | 700 | 10W | Standard | 215x119mm | 12 |
| EBE010P40 | 700 | 10W | PIR | 215x119mm | 12 |

Industrial

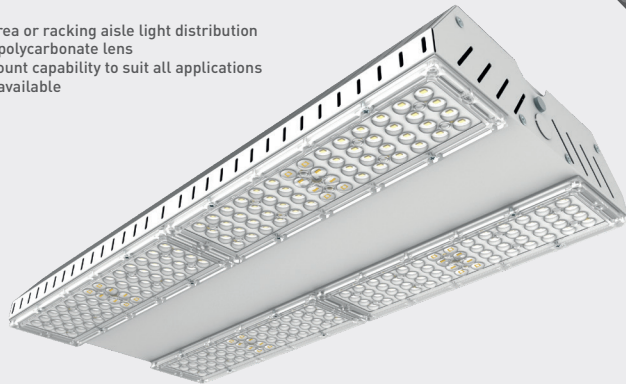
Industrial lighting applications offer you the opportunity to maximise energy savings. Our wide range of high or lowbay style luminaires for use in warehousing, factories and sports halls are available with a range of outputs, making them suitable for any mounting height



Eco Lowbay

- ✓ High power LED lowbay with open area or racking aisle light distribution
- ✓ Steel housing with impact resistant polycarbonate lens
- ✓ Surface, trunking and suspended mount capability to suit all applications
- ✓ Dimmable and emergency versions available
- ✓ 90° beam angle (Open Area)
- ✓ 30° beam angle (Racking Aisle area)

250/400W
EQUIVALENT



Open Area Distribution

| CAT NO. | LUMENS | WATTAGE | DRIVER | PACK QTY |
|------------|--------|---------|--------------|----------|
| ELB16WS40 | 16000 | 135W | Standard | 2 |
| ELB16WE40 | 16000 | 135W | Emergency | 2 |
| ELB16WD40 | 16000 | 135W | Dimmable | 2 |
| ELB16WED40 | 16000 | 135W | Em. Dimmable | 2 |
| ELB21WS40 | 21000 | 175W | Standard | 2 |
| ELB21WE40 | 21000 | 175W | Emergency | 2 |
| ELB21WD40 | 21000 | 175W | Dimmable | 2 |
| ELB21WED40 | 21000 | 175W | Em. Dimmable | 2 |

Racking Aisle Distribution

| CAT NO. | LUMENS | WATTAGE | DRIVER | PACK QTY |
|------------|--------|---------|--------------|----------|
| ELB16RS40 | 16000 | 135W | Standard | 2 |
| ELB16RE40 | 16000 | 135W | Emergency | 2 |
| ELB16RD40 | 16000 | 135W | Dimmable | 2 |
| ELB16RED40 | 16000 | 135W | Em. Dimmable | 2 |
| ELB21RS40 | 21000 | 175W | Standard | 2 |
| ELB21RE40 | 21000 | 175W | Emergency | 2 |
| ELB21RD40 | 21000 | 175W | Dimmable | 2 |
| ELB21RED40 | 21000 | 175W | Em. Dimmable | 2 |



Eris Mini Highbay

250W EQUIVALENT

- ✓ New generation highbay with 120° degree wide distribution
- ✓ Die-cast housing with polycarbonate lens
- ✓ Suspended mounting luminaire via hook provided

1YR ON SITE WARRANTY



IP65 RATED

30,000 HOURS

4000K NEUTRAL WHITE

5 year WARRANTY

NEW

| CAT NO. | LUMENS | WATTAGE | DIMENSIONS | PACK QTY |
|-----------|--------|---------|------------|----------|
| LHBE13S40 | 13100 | 100W | Ø250mm | 1 |
| LHBE17S40 | 17000 | 120W | Ø250mm | 1 |

Eris Maxi Highbay

400W EQUIVALENT

- ✓ New generation highbay with 120° degree wide distribution
- ✓ Die-cast housing with polycarbonate lens
- ✓ Suspended mounting luminaire via hook provided

1YR ON SITE WARRANTY



IP65 RATED

30,000 HOURS

4000K NEUTRAL WHITE

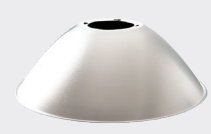
5 year WARRANTY

| CAT NO. | LUMENS | WATTAGE | DIMENSIONS | PACK QTY |
|-----------|--------|---------|------------|----------|
| LHBE20S40 | 20250 | 150W | Ø330mm | 1 |

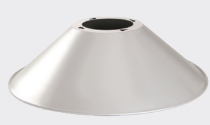
Eris Highbay Maxi Accessories



LHBRFL60



LHBRFL90



LHBRFL120



LHBRFT

| CAT NO. | DESCRIPTION | BEAM ANGLE |
|-----------|-------------------------|------------|
| LHBRFL60 | Aluminium Reflector | 60 |
| LHBRFL90 | Aluminium Reflector | 90 |
| LHBRFL120 | Aluminium Reflector | 120 |
| LHBRFT | Polycarbonate Refractor | 90 |



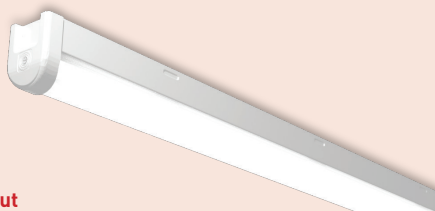
LuxPack Batten

Eco Climate Array

Eco Climate T8

LuxPack Batten

- ✓ Surface mounting linear range offering equivalent performance in 1200mm, 1500mm & 1800mm
- ✓ Simple snap together body with speed fit terminals
- ✓ Large opal diffuser for reduced glare and improved uniformity
- ✓ Suitable for use with Batten mount PIR sensors



Single Output

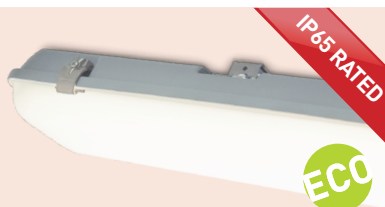
| CAT NO. | LUMENS | WATTAGE | DRIVER | DIMENSIONS |
|-------------|--------|---------|-----------|------------|
| LXB12W27L40 | 2700 | 21W | Standard | 4ft/1262mm |
| LXB12W27E40 | 2700 | 21W | Emergency | 4ft/1262mm |
| LXB15W40L40 | 4000 | 31W | Standard | 5ft/1562mm |
| LXB15W40E40 | 4000 | 31W | Emergency | 5ft/1562mm |
| LXB18W49L40 | 4900 | 39W | Standard | 6ft/1862mm |
| LXB18W49E40 | 4900 | 39W | Emergency | 6ft/1862mm |

Twin Output

| CAT NO. | LUMENS | WATTAGE | DRIVER | DIMENSIONS | PACK QTY |
|-------------|--------|---------|-----------|------------|----------|
| LXB12W49L40 | 4900 | 38W | Standard | 4ft/1262mm | 6 |
| LXB12W49E40 | 4900 | 38W | Emergency | 4ft/1262mm | 6 |
| LXB15W74L40 | 7400 | 58W | Standard | 5ft/1562mm | 6 |
| LXB15W74E40 | 7400 | 58W | Emergency | 5ft/1562mm | 6 |
| LXB18W95L40 | 9500 | 75W | Standard | 6ft/1862mm | 6 |
| LXB18W95E40 | 9500 | 75W | Emergency | 6ft/1862mm | 6 |

Eco Climate Array

- ✓ High performance linear weatherproof luminaire with integrated LED array
- ✓ Polycarbonate construction with opal diffuser and stainless steel clips
- ✓ Single and twin output options equivalent in output to fluorescent lamp sources
- ✓ Surface and suspension mounting via rear fixing brackets



Single Output

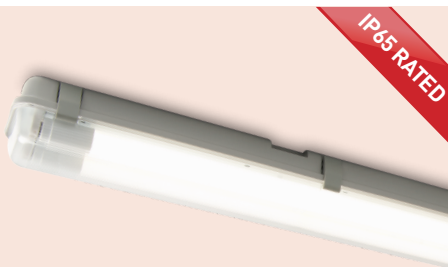
| CAT NO. | LUMENS | WATTAGE | DRIVER | DIMENSIONS |
|--------------|--------|---------|-----------|------------|
| ECL6010L40 | 1000 | 10W | Standard | 2ft/656mm |
| ECL6010EL40 | 1000 | 10W | Emergency | 2ft/656mm |
| ECL12021L40 | 2100 | 21W | Standard | 4ft/1267mm |
| ECL12021EL40 | 2100 | 21W | Emergency | 4ft/1267mm |
| ECL15031L40 | 3100 | 31W | Standard | 5ft/1567mm |
| ECL15031EL40 | 3100 | 31W | Emergency | 5ft/1567mm |
| ECL18042L40 | 4200 | 42W | Standard | 6ft/1870mm |
| ECL18042EL40 | 4200 | 42W | Emergency | 6ft/1870mm |

Twin Output

| CAT NO. | LUMENS | WATTAGE | DRIVER | DIMENSIONS | PACK QTY |
|--------------|--------|---------|-----------|------------|----------|
| ECL6019L40 | 1900 | 19W | Standard | 2ft/656mm | 6 |
| ECL6019EL40 | 1900 | 19W | Emergency | 2ft/656mm | 6 |
| ECL12043L40 | 4300 | 43W | Standard | 4ft/1267mm | 6 |
| ECL12043EL40 | 4300 | 43W | Emergency | 4ft/1267mm | 6 |
| ECL15063L40 | 6300 | 63W | Standard | 5ft/1567mm | 6 |
| ECL15063EL40 | 6300 | 63W | Emergency | 5ft/1567mm | 6 |
| ECL18084L40 | 8400 | 84W | Standard | 6ft/1870mm | 6 |
| ECL18084EL40 | 8400 | 84W | Emergency | 6ft/1870mm | 6 |

Eco Climate T8

- ✓ Linear weatherproof luminaire supplied by T8 LED tubes
- ✓ Polycarbonate body and diffuser c/w plastic clips
- ✓ Mounting clips and cable gland included



Single Lamp

| CAT NO. | LUMENS | WATTAGE | DRIVER | DIMENSIONS |
|--------------|--------|---------|----------|------------|
| ECLT6W10S40 | 800 | 10W | Standard | 2ft/661mm |
| ECLT12W18S40 | 1500 | 18W | Standard | 4ft/1261mm |
| ECLT15W22S40 | 1950 | 22W | Standard | 5ft/1561mm |

Twin Lamp

| CAT NO. | LUMENS | WATTAGE | DRIVER | DIMENSIONS | PACK QTY |
|--------------|--------|---------|----------|------------|----------|
| ECLT6W20S40 | 1600 | 20W | Standard | 2ft/661mm | 6 |
| ECLT12W36S40 | 3000 | 36W | Standard | 4ft/1261mm | 6 |
| ECLT15W44S40 | 3900 | 44W | Standard | 5ft/1561mm | 6 |

Emergency

Required for almost every project, emergency lighting is an essential part of any lighting range. With both internal and external options available we have an emergency product available for every application.



Decorative Hanging Blade

Tempus Bulkhead

- ✓ Surface mount maintained emergency bulkhead for internal or external use
- ✓ Two screw diffuser design with rear and side cable entry points
- ✓ Can be wired for Non-Maintained use
- ✓ Supplied with self-adhesive legend kit and weatherproof cable gland



| CAT NO. | LUMENS | WATTAGE | PACK QTY |
|---------|--------|---------|----------|
| LEMBKM3 | 140 | 3W | 12 |

Tempus Profile Exit Box

- ✓ Wall mounted maintained exit box
- ✓ Steel body construction with polycarbonate legend
- ✓ Above and rear cable entry points



| CAT NO. | DESCRIPTION | PACK QTY |
|----------|--------------------------------|----------|
| LTPEBXM3 | Exit Box & Upward Legend | 6 |
| LTPEBXDA | Downward Legend accessory only | 1 |
| LTPEBXRA | Right Legend accessory only | 1 |
| LTPEBXLA | Left Legend accessory only | 1 |

Tempus Exit Box

- ✓ Wall mounted maintained exit box
- ✓ Steel body construction with polycarbonate legend
- ✓ Side and rear cable entry points



| CAT NO. | DESCRIPTION | PACK QTY |
|------------|----------------------|----------|
| LEMEBXM3 | With Upward Legend | 10 |
| LEMEBXM3DA | With Downward Legend | 10 |
| LEMEBXM3RA | With Right Legend | 10 |
| LEMEBXM3LA | With Left Legend | 10 |

Decorative Hanging Blade

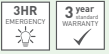
- ✓ Ceiling mounted maintained hanging blade
- ✓ Aluminium body with double sided acrylic legend
- ✓ Supplied with suspension chain only



| CAT NO. | DESCRIPTION | WATTAGE | PACK QTY |
|----------|-------------------------|---------|----------|
| LEMDEM3 | With Downward Legend | 3W | 6 |
| LEMDEMUA | With Upward Legend | 3W | 1 |
| LEMDEMRA | With Right/ Left Legend | 3W | 1 |

Tempus Recessed Downlight

- ✓ Discreet non-maintained emergency downlight
- ✓ Recessed mount luminaire suitable for plasterboard or suspended ceiling systems
- ✓ Open area or corridor optic options to suit all applications



| CAT NO. | LUMENS | WATTAGE | TYPE | PACK QTY |
|---------|--------|---------|-----------|----------|
| LEMDDWO | 120 | 1W | Open Area | 10 |
| LEMDDWC | 120 | 1W | Corridor | 10 |

Tempus Surface Downlight

- ✓ Non-maintained emergency downlight
- ✓ Surface mount luminaire suitable for plasterboard or solid ceilings
- ✓ Installation via rear cable entry
- ✓ Open area or corridor optic options to suit all applications



| CAT NO. | LUMENS | WATTAGE | TYPE | PACK QTY |
|---------|--------|---------|-----------|----------|
| LEMDSWO | 120 | 1W | Open Area | 10 |
| LEMDSWC | 120 | 1W | Corridor | 10 |

Tempus IP20 Twinspot

- ✓ Non-maintained emergency twinspot
- ✓ Ideal for high ceiling applications
- ✓ All polycarbonate body construction
- ✓ Adjustable heads to ensure coverage area



| CAT NO. | LUMENS | WATTAGE | PACK QTY |
|----------|--------|---------|----------|
| LEMTWNM3 | 400 | 5W | 5 |



Tempus IP65 Twinspot

- ✓ Non-maintained IP rated emergency twinspot
- ✓ Ideal for high ceiling industrial applications
- ✓ Steel body construction with polycarbonate lens
- ✓ Adjustable heads to ensure coverage area



| CAT NO. | LUMENS | WATTAGE | PACK QTY |
|------------|--------|---------|----------|
| LEMIPTWNM3 | 480 | 7W | 5 |

Floodlights

Floodlights are a best selling and versatile exterior lighting range with options available making them ideal for not only residential driveways and gardens but also industrial loading bays and buildings. Available with or without PIR for additional security and available in black or white our best selling Slimline Guardian range lights the way.



Slimline Guardian FLOOD LIGHTS

- Market leading LED floodlight ideal for multi-purpose use
- Die cast aluminium housing for maximum durability
- Easy installation with a fit and tilt bracket
- Various colour temperatures available to suit all applications
- Supplied with **1M of cable** ideal where thru wall wiring is necessary

BESTSELLER



LED 90% **ENERGY SAVINGS**
LED TO HALOGEN EQUIVALENT

| | HALOGEN Wattage |
|-----|-----------------|
| 8W | 100w |
| 15W | 200w |
| 22W | 300w |
| 38W | 500w |

LED = REDUCED POWER CONSUMPTION

ADJUSTABLE PIR DETECTION

120°
PIR DETECTION RANGE

10m

IP65
Weather Proof

30,000
Hours

3Year
Warranty

Standard

| CAT NO. | LUMENS | WATTAGE | COLOUR TEMP | IP RATING | PACK QTY |
|-----------|--------|---------|-------------|-----------|----------|
| LFS6B130 | 600 | 8W | 3000K | IP65 | 10 |
| LFS6B150 | 600 | 8W | 5000K | IP65 | 10 |
| LFS12B130 | 1200 | 15W | 3000K | IP65 | 10 |
| LFS12B150 | 1200 | 15W | 5000K | IP65 | 10 |
| LFS18B130 | 1800 | 22W | 3000K | IP65 | 10 |
| LFS18B150 | 1800 | 22W | 5000K | IP65 | 10 |
| LFS30B130 | 3000 | 38W | 3000K | IP65 | 8 |
| LFS30B150 | 3000 | 38W | 5000K | IP65 | 8 |

With PIR

| CAT NO. | LUMENS | WATTAGE | COLOUR TEMP | IP RATING | PACK QTY |
|------------|--------|---------|-------------|-----------|----------|
| LFSP6B130 | 600 | 8W | 3000K | IP44 | 10 |
| LFSP6B150 | 600 | 8W | 5000K | IP44 | 10 |
| LFSP12B130 | 1200 | 15W | 3000K | IP44 | 10 |
| LFSP12B150 | 1200 | 15W | 5000K | IP44 | 10 |
| LFSP18B130 | 1800 | 22W | 3000K | IP44 | 10 |
| LFSP18B150 | 1800 | 22W | 5000K | IP44 | 10 |
| LFSP30B130 | 3000 | 38W | 3000K | IP44 | 8 |
| LFSP30B150 | 3000 | 38W | 5000K | IP44 | 8 |

*Replace 'B' with 'W' for White option (not available in 38W)

*Replace 'B' with 'W' for White option (not available in 38W)

Eco Floodlight

- ✓ Domestic floodlight suitable for residential applications
- ✓ Die cast aluminium housing
- ✓ Supplied with fixing bracket



ECO

NEW

| CAT NO. | LUMENS | WATTAGE | COLOUR | PACK QTY |
|-----------|--------|---------|--------|----------|
| EFLD10B40 | 800 | 10W | Black | 20 |
| EFLD20B40 | 1600 | 20W | Black | 20 |
| EFLD30B40 | 2400 | 30W | Black | 10 |
| EFLD50B40 | 4000 | 50W | Black | 10 |
| EFLD10W40 | 800 | 10W | White | 20 |
| EFLD20W40 | 1600 | 20W | White | 20 |
| EFLD30W40 | 2400 | 30W | White | 10 |
| EFLD50W40 | 4000 | 50W | White | 10 |

Eco Floodlight with PIR

- ✓ Domestic floodlight suitable for residential applications
- ✓ Die cast aluminium housing
- ✓ Supplied with fixing bracket
- ✓ Adjustable PIR with settings

PIR



ECO

NEW

| CAT NO. | LUMENS | WATTAGE | COLOUR | PACK QTY |
|------------|--------|---------|--------|----------|
| EFLD10B40P | 800 | 10W | Black | 20 |
| EFLD20B40P | 1600 | 20W | Black | 20 |
| EFLD30B40P | 2400 | 30W | Black | 10 |
| EFLD50B40P | 4000 | 50W | Black | 10 |
| EFLD10W40P | 800 | 10W | White | 20 |
| EFLD20W40P | 1600 | 20W | White | 20 |
| EFLD30W40P | 2400 | 30W | White | 10 |
| EFLD50W40P | 4000 | 50W | White | 10 |

Commercial Floodlight

- ✓ High power LED floodlight for commercial or industrial use
- ✓ Die cast aluminium housing and polycarbonate lens for increased durability
- ✓ Pre-wired with 0.75m H05RN cable for easy installation
- ✓ Symmetric lens performance

250W HPI EQUIVALENT



ECO

NEW

| CAT NO. | LUMENS | WATTAGE | COLOUR | PACK QTY |
|----------|--------|---------|--------|----------|
| LFC92B40 | 9200 | 100W | Black | 5 |

Commercial Floodlight

- ✓ High power LED floodlight for commercial or industrial use
- ✓ Die cast aluminium housing and polycarbonate lens for increased durability
- ✓ Pre-wired with 0.75m H05RN cable for easy installation
- ✓ Symmetric lens performance

400W HPI EQUIVALENT



ECO

NEW

| CAT NO. | LUMENS | WATTAGE | COLOUR | PACK QTY |
|-----------|--------|---------|--------|----------|
| LFC190B40 | 19000 | 200W | Black | 2 |



Inspection & Worklights

If you want additional temporary and portable lighting options, from mains powered tripods and worklights, to rechargeable torches, clamps and magnetic options, our Inspection and Worklight range has something for everyone.

Slimline USB Rechargeable Work Light with Power Bank

100W EQUIVALENT

- ✓ Portable worklight with USB charging in & out for powering portable devices
- ✓ Polycarbonate construction with weatherproof snap cover over USB ports
- ✓ Integrated handle for easy carrying with robust and stable steel stand
- ✓ 3 Hour battery duration at full output - 100%, 50%, OFF power button
- ✓ High capacity 6600mAh battery



| CAT NO. | LUMENS | WATTAGE | PACK QTY |
|---------|--------|---------|----------|
| LSWR7BR | 750 | 10W | 10 |

Slimline Twin Tripod Work Lights

2x300W EQUIVALENT

- ✓ Independent switching of each floodlight
- ✓ Height adjustable stand with cable storage loops
- ✓ Complete with 3m of rubber cable and UK plug



| CAT NO. | LUMENS | WATTAGE | PACK QTY |
|------------|----------|---------|----------|
| LSWT212BR3 | 2 x 1200 | 2 x 15W | 2 |
| LSWT218BR3 | 2 x 1800 | 2 x 18W | 2 |

Slimline Portable Work Light

- ✓ Complete with 2m of rubber cable
- ✓ Adjustable tilt angle
- ✓ Waterproof power switch



| CAT NO. | LUMENS | WATTAGE | PACK QTY |
|----------|--------|---------|----------|
| LSW12BR2 | 1200 | 15W | 10 |
| LSW30BR2 | 3000 | 38W | 4 |



200/500W EQUIVALENT

Rechargeable Clamp Work Light

- ✓ Portable worklight with heavy duty clamp, stand and carry handle
- ✓ Robust polycarbonate construction for increased durability
- ✓ 4 hour battery duration at full output - 100%, 50%, OFF power button
- ✓ Supplied with charging adapter



IP54 RATED
6000K COOL WHITE

NEW

| CAT NO. | LUMENS | WATTAGE | PACK QTY |
|-----------|--------|---------|----------|
| LCWR13660 | 1300 | 15W | 8 |

Rechargeable Magnetic Work Light

- ✓ Portable worklight with magnetic function, stand and carry handle
- ✓ Robust polycarbonate construction for increased durability
- ✓ 3 hour battery duration at full output. Variable light output and flashing mode
- ✓ Supplied with charging adapter



IP65 RATED
6500K COOL WHITE

NEW

| CAT NO. | LUMENS | WATTAGE | PACK QTY |
|-----------|--------|---------|----------|
| LMWR10665 | 1000 | 10W | 10 |

12V Rechargeable High Output Inspection Torch

- ✓ Inbuilt 2000 mAh USB Powerbank for charging devices
- ✓ 2 Working light modes & Red flashing beacon
- ✓ Durable hard wearing housing
- ✓ Multi fixing - 360° folding hook and tilting magnetic base



6500K COOL WHITE
STRONG MAGNET

NEW

| CAT NO. | LUMENS | WATTAGE | PACK QTY |
|------------|--------|---------|----------|
| LILW100U65 | 1000 | 10W | 8 |

USB Rechargeable Mini Tilt Torch

- ✓ USB Rechargeable Tilt Torch
- ✓ 2 Working light modes
- ✓ Durable hard wearing housing
- ✓ Multi fixing - 180° tilting magnetic base
- ✓ Supplied with USB charging cable



6500K COOL WHITE
STRONG MAGNET
USB

NEW

| CAT NO. | LUMENS | WATTAGE | PACK QTY |
|-----------|--------|---------|----------|
| LILT15T65 | 150 | 1.5W | 24 |

USB Rechargeable Swivel Torch with Power Bank

- ✓ Inbuilt 2000 mAh USB Power bank for charging devices
- ✓ 2 Working light modes
- ✓ Durable hard wearing housing
- ✓ Multi fixing - 360° folding hook
- ✓ 360° rotate and tilt magnetic base
- ✓ Supplied with USB charging cable



6500K COOL WHITE
STRONG MAGNET
USB

NEW

| CAT NO. | LUMENS | WATTAGE | PACK QTY |
|-----------|--------|---------|----------|
| LILT30R65 | 300 | 3W | 12 |

USB Rechargeable Tilt Torch with Power Bank

- ✓ Inbuilt 2000 mAh USB Power bank for charging devices
- ✓ 2 Working light modes & Red flashing beacon
- ✓ Durable hard wearing housing
- ✓ Multi fixing - 360° folding hook and tilting magnetic base
- ✓ Supplied with USB charging cable



6500K COOL WHITE
STRONG MAGNET
USB

NEW

| CAT NO. | LUMENS | WATTAGE | PACK QTY |
|-----------|--------|---------|----------|
| LILT45T65 | 450 | 5W | 24 |

Flame Effect Torch

- ✓ Decorative flame light for ambient lighting
- ✓ Supplied with table stand, garden spike and charging cable
- ✓ Long battery life
- ✓ 18 hours flame effect

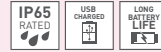


| CAT NO. | PACK QTY |
|------------|----------|
| LEXFLAMEBK | 16 |



Bluetooth LED Flame Speaker

- ✓ Decorative flame light with built in bluetooth compatible speaker
- ✓ USB charged - supplied with charging cable
- ✓ Long battery life - 8 hours of music
- ✓ 30 hours flame effect



| CAT NO. | PACK QTY |
|--------------|----------|
| LEXFLAMESPBK | 20 |



GU10 Garden Spike

- ✓ Decorative GU10 garden spike
- ✓ Die-cast aluminium housing
- ✓ Suitable for accent garden lighting
- ✓ Fully adjustable head
- ✓ Pre-wired with 1m cable



| CAT NO. | WATTAGE | PACK QTY |
|----------|----------|----------|
| LEXDGLSG | Max. 35W | 12 |



LED Garden Spike Light

- ✓ Latest integrated LED garden spike with tilt and rotatable head
- ✓ High impact housing for increased durability
- ✓ Perfect for accent garden lighting
- ✓ Pre-wired with 1m cable for ease of installation



| CAT NO. | LUMENS | WATTAGE | PACK QTY |
|-----------|--------|---------|----------|
| LEXLS4B40 | 200 | 2W | 24 |



Wedge LED Wall Light

- ✓ Decorative LED wall light
- ✓ Die-cast aluminium with a slate grey finish
- ✓ Suitable for exterior or interior living applications



| CAT NO. | LUMENS | WATTAGE | PACK QTY |
|-----------|--------|---------|----------|
| LEXD3WDG3 | 120 | 3W | 8 |



Square LED Wall Light

- ✓ Decorative LED wall light
- ✓ Die-cast aluminium with a slate grey finish
- ✓ Suitable for exterior or interior living applications



| CAT NO. | LUMENS | WATTAGE | PACK QTY |
|------------|--------|---------|----------|
| LEXD5SUDG3 | 150 | 5.6W | 24 |



Low Profile LED Wall Light

- ✓ Decorative LED wall light
- ✓ Die-cast aluminium with a slate grey finish
- ✓ Suitable for exterior or interior living applications



| CAT NO. | LUMENS | WATTAGE | PACK QTY |
|------------|--------|---------|----------|
| LEXD8FUDG3 | 520 | 10W | 20 |



Cube LED Wall Light

- ✓ Decorative LED wall light
- ✓ Die-cast aluminium with a slate grey finish
- ✓ Suitable for exterior or interior living applications



| CAT NO. | LUMENS | WATTAGE | PACK QTY |
|------------|--------|---------|----------|
| LEXD9SUDG3 | 306 | 9W | 16 |



Single Wall Light

- ✓ Exterior single wall light with fully adjustable head
- ✓ Die-cast aluminium housing for increased durability
- ✓ Suitable for use as ambient or decorative lighting



NEW

| CAT NO. | LUMENS | WATTAGE | PACK QTY |
|-----------|--------|---------|----------|
| LEXWS4B40 | 360 | 5W | 24 |

Twin Wall Light

- ✓ Exterior twin wall light with fully adjustable heads
- ✓ Die-cast aluminium housing for increased durability
- ✓ Suitable for use as ambient or decorative lighting



NEW

| CAT NO. | LUMENS | WATTAGE | PACK QTY |
|-----------|--------|---------|----------|
| LEXWT7B40 | 720 | 10W | 12 |

Twin Wall Light

- ✓ Exterior twin wall light with fully adjustable heads
- ✓ Die-cast aluminium housing for increased durability
- ✓ Adjustable PIR motion sensor



PIR

NEW

| CAT NO. | LUMENS | WATTAGE | PACK QTY |
|------------|--------|---------|----------|
| LEXWT7B40P | 720 | 10W | 12 |

Stainless Steel GU10 Wall Light

- ✓ Stainless steel housings
- ✓ GU10 lampholder (lamp not supplied)
- ✓ Fixed Up/Down light

UP / DOWN



FOR GU10



| CAT NO. | DIMENSIONS | PACK QTY |
|----------|-----------------|----------|
| LEXDSSUD | 160 x 87 x 94mm | 12 |

Stainless Steel GU10 Wall Light

- ✓ Stainless steel housings
- ✓ GU10 lampholder (lamp not supplied)
- ✓ Fixed downlight

FIXED



FOR GU10



| CAT NO. | DIMENSIONS | PACK QTY |
|---------|-----------------|----------|
| LEXDSSF | 120 x 87 x 94mm | 12 |

Stainless Steel GU10 Wall Light

- ✓ Stainless steel housings
- ✓ GU10 lampholder (lamp not supplied)
- ✓ Fixed Up/Down light
- ✓ Adjustable PIR motion sensor

PIR



FOR GU10



| CAT NO. | DIMENSIONS | TYPE | PACK QTY |
|-------------|------------------|-------------------|----------|
| LEXDSSUDPIR | 219 x 68 x 111mm | PIR Motion Sensor | 12 |

Stainless Steel GU10 Wall Light

- ✓ Stainless steel housings
- ✓ Single or twin lamp options available
- ✓ GU10 lampholder (lamp not supplied)

ADJUSTABLE



FOR GU10



| CAT NO. | DIMENSIONS | TYPE | PACK QTY |
|---------|-----------------|-------------|----------|
| LEXDSSA | 162 x 87 x 94mm | Single Lamp | 12 |
| LEXDSSA | 158 x 121mm | Twin Lamp | 12 |

3 Panel Coach Lantern

- ✓ Die-cast aluminium housing with 3 glass panels
- ✓ Adjustable PIR sensor with time and lux level settings



| CAT NO. | WATTS | PACK QTY |
|-----------|----------|----------|
| LEXDCL3PB | Max. 60W | 4 |

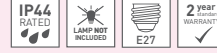


PIR

NEW

4 Panel Coach Lantern

- ✓ Die-cast aluminium housing with 4 glass panels
- ✓ Adjustable PIR sensor with time and lux level settings



| CAT NO. | WATTAGE | PACK QTY |
|-----------|----------|----------|
| LEXDCL4PB | Max. 60W | 4 |



PIR

NEW

6 Panel Coach Lantern

- ✓ Decorative appearance E27 coach lantern
- ✓ Die-cast aluminium housing with 6 glass panels
- ✓ Adjustable PIR sensor with time and lux level settings



| CAT NO. | WATTAGE | PACK QTY |
|-----------|----------|----------|
| LEXDCL6PB | Max. 60W | 4 |



PIR

NEW

Coach Lantern

- ✓ Decorative appearance E27 coach lantern
- ✓ Die-cast aluminium housing with 6 glass panels and extended outreach
- ✓ Adjustable PIR sensor with time and lux level settings



| CAT NO. | WATTAGE | PACK QTY |
|------------|----------|----------|
| LEXDCL6PBL | Max. 60W | 4 |

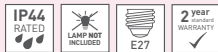


PIR

NEW

Decorative Coach Lantern

- ✓ Traditional appearance coach lantern
- ✓ Die-cast aluminium housing with 6 glass panels and extended outreach
- ✓ Adjustable PIR sensor with time and lux level settings



| CAT NO. | WATTAGE | PACK QTY |
|-------------|----------|----------|
| LEXDCL6PBLD | Max. 60W | 4 |



PIR

NEW

LED Coach Lantern

- ✓ Top arm lantern with integrated LED technology
- ✓ Plastic housing with 4 polycarbonate panels



| CAT NO. | LUMENS | WATTAGE | PACK QTY |
|------------|--------|---------|----------|
| LEXCL4T6B4 | 640 | 8W | 12 |



NEW

LED Coach Lantern

- ✓ Bottom arm lantern with the latest integrated LED technology
- ✓ Plastic housing with 4 polycarbonate panels



| CAT NO. | LUMENS | WATTAGE | PACK QTY |
|------------|--------|---------|----------|
| LEXCL4B6B4 | 640 | 8W | 12 |



NEW

LED Coach Lantern with PIR

- ✓ Bottom arm lantern with the latest integrated LED technology
- ✓ Plastic housing with 4 polycarbonate panels
- ✓ Adjustable PIR sensor with time and lux level settings



| CAT NO. | LUMENS | WATTAGE | PACK QTY |
|-------------|--------|---------|----------|
| LEXCL4B6B4P | 640 | 8W | 12 |



NEW



light it up

with **LUCECO** Solar Range

SOLAR GUARDIAN EXTENDED RANGE

Our new Solar LED range gives you the flexibility to light up any space.

- Ideal for spaces without mains power, fast and simple installation **no wiring required**
- Perfect for outdoor entrance areas, balconies, walkways, decorative garden lighting and sheds/outhouses
- To see our full extended range please visit www.luceco.com



LED



Weather Proof



LEXSL20B40



LEXSF6B40



LEXS80B40

Solar

Solar technology offers a perfect solution to residential outdoor lighting where mains power is not present. With its quick and easy installation and maximum energy savings Luceco offer a full range of Solar products to light up your household with no electricity costs. Giving you a truly functional solar range.



Solar Guardian Wall Lantern

PIR

- ✓ Exterior wall lantern with Solar power technology
- ✓ Polycarbonate body in black or grey and opal diffuser
- ✓ Ideal for external residential applications including walkways and doorways
- ✓ Product illuminates only when needed with inbuilt PIR / Photocell



| CAT NO. | BODY COLOUR | LUMENS | DIMENSIONS | PACK QTY |
|------------|-------------|--------|-------------|----------|
| LEXSL20B40 | Black | 200 | 152 x 159mm | 12 |
| LEXSL20G40 | Grey | 200 | 152 x 159mm | 12 |

Stainless Steel Solar Wall Light

PIR

- ✓ Decorative exterior wall light with Solar power technology
- ✓ Stainless steel construction
- ✓ Ideal for external residential applications where a decorative look is required
- ✓ Product illuminates only when needed with inbuilt PIR / Photocell



| CAT NO. | LUMENS | DIMENSIONS | PACK QTY |
|-------------|--------|-------------|----------|
| LEXDSL1540P | 100 | 102 x 150mm | 8 |

Solar Twin Security Light

PIR

- ✓ Exterior security light with Solar power technology
- ✓ Adjustable heads to ensure required detection area is covered
- ✓ Ideal for security purposes within residential areas
- ✓ Product illuminates only when needed with inbuilt PIR / Photocell



| CAT NO. | LUMENS | DIMENSIONS | PACK QTY |
|-----------|--------|-------------|----------|
| LEXT4B50S | 400 | 180 x 220mm | 8 |

Solar Guardian Wall Light

40W
EQUIVALENT

- ✓ Exterior wall light with Solar power technology
- ✓ Polycarbonate body
- ✓ Perfect for external residential applications including patios
- ✓ PIR / Photocell with security and presence detection modes of operation



| | | | |
|------------|---------------------|--------------|--------------------------|
| IP44 RATED | 4000K NEUTRAL WHITE | WHITE FINISH | 1 year warranty WARRANTY |
|------------|---------------------|--------------|--------------------------|

| CAT NO. | LUMENS | DIMENSIONS | PACK QTY |
|-----------|--------|------------|----------|
| LEXS30W30 | 180 | 96 x 152mm | 20 |

Solar Guardian Wall Light

40W
EQUIVALENT

- ✓ Exterior wall light with Solar power technology
- ✓ Polycarbonate body
- ✓ Perfect for external residential applications including patios
- ✓ PIR / Photocell with security and presence detection modes of operation



| | | | |
|------------|---------------------|--------------|--------------------------|
| IP65 RATED | 4000K NEUTRAL WHITE | BLACK FINISH | 1 year warranty WARRANTY |
|------------|---------------------|--------------|--------------------------|

| CAT NO. | LUMENS | DIMENSIONS | PACK QTY |
|-----------|--------|------------|----------|
| LEXS22B40 | 220 | 96 x 145mm | 20 |

Solar Guardian Wall Light

75W
EQUIVALENT

- ✓ Exterior wall light with Solar power technology
- ✓ Polycarbonate body in black or white
- ✓ Perfect for external residential applications including patios
- ✓ PIR / Photocell with security and presence detection modes of operation



| | | |
|------------|---------------------|--------------------------|
| IP44 RATED | 4000K NEUTRAL WHITE | 1 year warranty WARRANTY |
|------------|---------------------|--------------------------|

| CAT NO. | LUMENS | DIMENSIONS | COLOUR | PACK QTY |
|-----------|--------|-------------|--------|----------|
| LEXS40B40 | 400 | 140 x 212mm | Black | 12 |
| LEXS40W40 | 400 | 140 x 212mm | White | 12 |

Solar Guardian Wall Light

150W
EQUIVALENT

- ✓ Exterior wall light with Solar power technology
- ✓ Polycarbonate body in black or white
- ✓ Perfect for external residential applications including patios
- ✓ PIR / Photocell with security and presence detection modes of operation



| | | |
|------------|---------------------|--------------------------|
| IP44 RATED | 4000K NEUTRAL WHITE | 1 year warranty WARRANTY |
|------------|---------------------|--------------------------|

| CAT NO. | LUMENS | DIMENSIONS | PACK QTY |
|-----------|--------|-------------|----------|
| LEXS80B40 | 800 | 270 x 220mm | 8 |
| LEXS80W40 | 800 | 270 x 220mm | 8 |

Solar Guardian Floodlight

100W
EQUIVALENT

- ✓ Exterior floodlight with Solar power technology
- ✓ Polycarbonate body for increased durability
- ✓ Equivalent performance to mains powered Halogen or LED floodlights
- ✓ PIR / Photocell with security and presence detection modes of operation



| | | |
|------------|---------------------|--------------------------|
| IP65 RATED | 4000K NEUTRAL WHITE | 2 year warranty WARRANTY |
|------------|---------------------|--------------------------|

NEW

| CAT NO. | LUMENS | DIMENSIONS | PACK QTY |
|-----------|--------|-------------|----------|
| LEXSF6B40 | 550 | 193 x 132mm | 24 |

Solar Guardian Floodlight

200W
EQUIVALENT

- ✓ High Output floodlight with Solar power technology
- ✓ Polycarbonate body for increased durability
- ✓ Equivalent performance to mains powered Halogen or LED floodlights
- ✓ PIR / Photocell with security and presence detection modes of operation



| | | |
|------------|---------------------|--------------------------|
| IP65 RATED | 4000K NEUTRAL WHITE | 2 year warranty WARRANTY |
|------------|---------------------|--------------------------|

NEW

| CAT NO. | LUMENS | DIMENSIONS | PACK QTY |
|------------|--------|-------------|----------|
| LEXSF11B40 | 1080 | 300 x 197mm | 8 |

LED Filament A60

- ✓ LED technology designed to mimic and replicate traditional filament lamps
- ✓ Exceptional efficacy up to 135Llm/W - uses fraction of the cost
- ✓ Available in B22 and E27 base caps



| CAT NO. | DESCRIPTION | CAP TYPE | LUMENS | WATTAGE | EQUIVALENT WATTAGE | INNER QTY |
|-----------|--------------|----------|--------|---------|--------------------|-----------|
| LA22W4F47 | Non-dimmable | B22 | 470 | 4W | 40W | 5 |
| LA27W4F47 | Non-dimmable | E27 | 470 | 4W | 40W | 5 |
| LA22W6F81 | Non-dimmable | B22 | 810 | 6W | 60W | 5 |
| LA27W6F81 | Non-dimmable | E27 | 810 | 6W | 60W | 5 |



LED Filament Candle

- ✓ LED technology designed to mimic and replicate traditional filament lamps
- ✓ Exceptional efficacy up to 135Llm/W - uses fraction of the cost
- ✓ Available in B22 and E27 base caps



| CAT NO. | DESCRIPTION | CAP TYPE | LUMENS | WATTAGE | EQUIVALENT WATTAGE | INNER QTY |
|------------|--------------|----------|--------|---------|--------------------|-----------|
| LC14W4F47 | Non-dimmable | E14 | 470 | 4W | 40W | 5 |
| LC22W4F47 | Non-dimmable | B22 | 470 | 4W | 40W | 5 |
| LC27W4F47 | Non-dimmable | E27 | 470 | 4W | 40W | 5 |
| LCD14W4F47 | Dimmable | E14 | 470 | 4W | 40W | 5 |
| LCD22W4F47 | Dimmable | B22 | 470 | 4W | 40W | 5 |
| LCD27W4F47 | Dimmable | E27 | 470 | 4W | 40W | 5 |



LED Filament Mini Globe

- ✓ LED technology designed to mimic and replicate traditional filament lamps
- ✓ Exceptional efficacy up to 117Llm/W - uses fraction of the cost
- ✓ Available in E14, B22 and E27 base caps



| CAT NO. | DESCRIPTION | CAP TYPE | LUMENS | WATTAGE | EQUIVALENT WATTAGE | INNER QTY |
|-----------|--------------|----------|--------|---------|--------------------|-----------|
| LB14W4F47 | Non-dimmable | E14 | 470 | 4W | 40W | 5 |
| LB22W4F47 | Non-dimmable | B22 | 470 | 4W | 40W | 5 |
| LB27W4F47 | Non-dimmable | E27 | 470 | 4W | 40W | 5 |



LED Classic A60

- ✓ 30% energy saving compared to CFLs
- ✓ Double lifetime compared to CFLs
- ✓ Exceptional efficacy upto 90Lm/W
- ✓ Dimmable options available



| CAT NO. | DESCRIPTION | CAP TYPE | LUMENS | WATTAGE | EQUIVALENT WATTAGE | INNER QTY |
|------------|--------------|----------|--------|---------|--------------------|-----------|
| LA22W5W47 | Non-dimmable | B22 | 470 | 5.5W | 40W | 5 |
| LA27W5W47 | Non-dimmable | E27 | 470 | 5.5W | 40W | 5 |
| LA22W9W81 | Non-Dimmable | B22 | 806 | 9W | 60W | 5 |
| LA27W9W81 | Non-Dimmable | E27 | 806 | 9W | 60W | 5 |
| LAD22W9W81 | Dimmable | B22 | 806 | 9W | 60W | 5 |
| LAD27W9W81 | Dimmable | E27 | 806 | 9W | 60W | 5 |
| LA22W15W15 | Non-dimmable | B22 | 1520 | 16W | 100W | 5 |
| LA27W15W15 | Non-dimmable | E27 | 1520 | 16W | 100W | 5 |



LED Classic Candle

- ✓ LED technology designed to mimic and replicate traditional filament lamps
- ✓ Exceptional efficacy up to 117Lm/W - uses fraction of the cost
- ✓ Available in E14, B22 and E27 base caps



| CAT NO. | DESCRIPTION | CAP TYPE | LUMENS | WATTAGE | EQUIVALENT WATTAGE | INNER QTY |
|-----------|--------------|----------|--------|---------|--------------------|-----------|
| LC14W3W25 | Non-dimmable | E14 | 250 | 3W | 25W | 5 |
| LC22W3W25 | Non-dimmable | B22 | 250 | 3W | 25W | 5 |
| LC14W5W47 | Non-dimmable | E14 | 470 | 5.5W | 40W | 5 |



LED Classic Mini Globe

- ✓ 80% energy savings verses traditional filament
- ✓ Long 20,000 hour life
- ✓ Available in E14 and E27 base caps



| CAT NO. | DESCRIPTION | CAP TYPE | LUMENS | WATTAGE | EQUIVALENT WATTAGE | INNER QTY |
|-----------|--------------|----------|--------|---------|--------------------|-----------|
| LB14W3W25 | Non-dimmable | E14 | 250 | 3W | 25W | 5 |
| LB22W3W25 | Non-dimmable | B22 | 250 | 3W | 25W | 5 |
| LB14W5W47 | Non-dimmable | E14 | 470 | 5.5W | 40W | 5 |



LED Glass GU10

- ✓ Replicates traditional glass halogen in appearance and output
- ✓ Sparkling Edge2Edge lens maximises illumination
- ✓ 90% energy saving versus halogen
- ✓ Dimmable options available
- ✓ Upgraded IC driver technology



| CAT NO. | DESCRIPTION | COLOUR TEMP | LUMENS | WATTAGE | EQUIVALENT WATTAGE | INNER QTY |
|----------|--------------|-------------|--------|---------|--------------------|-----------|
| LGW5G37 | Non-dimmable | 2700K | 370 | 5W | 50W | 5 |
| LGN5G37 | Non-dimmable | 4000K | 370 | 5W | 50W | 5 |
| LGC5G37 | Non-dimmable | 6500K | 370 | 5W | 50W | 5 |
| LGDW5G37 | Dimmable | 2700K | 370 | 5W | 50W | 5 |
| LGDN5G37 | Dimmable | 4000K | 370 | 5W | 50W | 5 |
| LGDC5G37 | Dimmable | 6500K | 370 | 5W | 50W | 5 |



LED Premium GU10

- ✓ True halogen appearance and perfect fit
- ✓ New Edge2Edge lens design drastically reduces lamp bezel edge to improve aesthetics when lit or unlit
- ✓ Upgraded IC driver option for superior performance and reliability
- ✓ 90% energy saving versus halogen
- ✓ Upto 25,000 hours' life to L70 in enclosed downlights



| CAT NO. | DESCRIPTION | COLOUR TEMP | LUMENS | WATTAGE | EQUIVALENT WATTAGE | INNER QTY |
|-----------|--------------|-------------|--------|---------|--------------------|-----------|
| LGW5W37P | Non-dimmable | 2700K | 370 | 5W | 50W | 5 |
| LGN5W37P | Non-dimmable | 4000K | 370 | 5W | 50W | 5 |
| LGC5W37P | Non-dimmable | 6500K | 370 | 5W | 50W | 5 |
| LGDW5W37P | Dimmable | 2700K | 370 | 5W | 50W | 5 |
| LGDN5W37P | Dimmable | 4000K | 370 | 5W | 50W | 5 |
| LGDC5W37P | Dimmable | 6500K | 370 | 5W | 50W | 5 |
| LGW5W50P | Non-dimmable | 2700K | 500 | 5W | 50W | 5 |
| LGN5W50P | Non-dimmable | 4000K | 500 | 5W | 50W | 5 |
| LGC5W50P | Non-dimmable | 6500K | 500 | 5W | 50W | 5 |
| LGDW5W50P | Dimmable | 2700K | 500 | 5W | 50W | 5 |
| LGDN5W50P | Dimmable | 4000K | 500 | 5W | 50W | 5 |
| LGDC5W50P | Dimmable | 6500K | 500 | 5W | 50W | 5 |



LED Premium MR16

- ✓ True halogen appearance and perfect fit
- ✓ New Edge2Edge lens design drastically reduces lamp bezel edge to improve aesthetics when lit or unlit
- ✓ 90% energy saving versus halogen

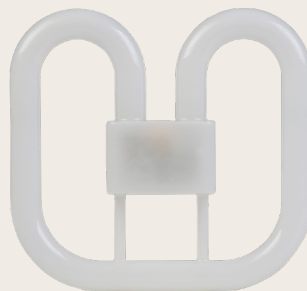


| CAT NO. | DESCRIPTION | COLOUR TEMP | LUMENS | WATTAGE | EQUIVALENT WATTAGE | INNER QTY |
|----------|--------------|-------------|--------|---------|--------------------|-----------|
| LMW5W37P | Non-dimmable | 2700K | 370 | 5W | 50W | 5 |
| LMN5W37P | Non-dimmable | 4000K | 370 | 5W | 50W | 5 |
| LMC5W37P | Non-dimmable | 6500K | 370 | 5W | 50W | 5 |



LED 2D Retrofit

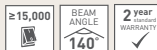
- ✓ No rewiring needed - straight retrofit
- ✓ Ideal replacement for traditional CFL Lamp
- ✓ Available in a range of wattages to replace existing traditional 16W, 28W and 38W equivalents
- ✓ 40,000 hours (lasts up to x3 longer than CFLs)
- ✓ Available in both 2 and 4 pin base caps
- ✓ Not suitable with emergency battery packs
- ✓ Magnetic version supplied with replacement LED starter



| CAT NO. | DESCRIPTION | LUMENS | WATTAGE | EQUIVALENT WATTAGE | BASE TYPE | DIMENSIONS | INNER QTY |
|----------|-------------|--------|---------|--------------------|-----------|------------|-----------|
| L2D6M40 | Magnetic | 750 | 6.5W | 16W | 2 Pin | 135x130mm | 5 |
| L2D12M40 | Magnetic | 1550 | 12.5W | 28W | 2 Pin | 200x187mm | 5 |
| L2D6E40 | Electronic | 750 | 6.5W | 16W | 4 Pin | 135x130mm | 5 |
| L2D12E40 | Electronic | 1550 | 12.5W | 28W | 4 Pin | 200x187mm | 5 |
| L2D18E40 | Electronic | 2000 | 18W | 38W | 4 Pin | 200x187mm | 5 |

LED Premium T8 Tubes

- ✓ Up to 111Lm/W - 50% energy saving against fluorescent for similar lux levels
- ✓ Retrofit with most T8 luminaires (non dimming)
- ✓ Shorted end, supplied with dummy replacement LED starter
- ✓ Fragment retention PET film
- ✓ Compatible Luceco emergency battery pack available



| CAT NO. | COLOUR TEMP | LUMENS | WATTAGE | SIZE |
|-------------|-------------|--------|---------|------------|
| LT8G2N10W11 | 4000K | 1100 | 10W | 600mm/2ft |
| LT8G4N18W20 | 4000K | 2000 | 18W | 1200mm/4ft |
| LT8G4C18W20 | 6500K | 2000 | 18W | 1200mm/4ft |
| LT8G4N22W24 | 4000K | 2400 | 22W | 1200mm/4ft |
| LT8G4C22W24 | 6500K | 2400 | 22W | 1200mm/4ft |
| LT8G5N22W24 | 4000K | 2400 | 22W | 1500mm/5ft |
| LT8G5C22W24 | 6500K | 2400 | 22W | 1500mm/5ft |
| LT8G5N32W35 | 4000K | 3500 | 32W | 1500mm/5ft |
| LT8G5C32W35 | 6500K | 3500 | 32W | 1500mm/5ft |
| LT8G6N40W44 | 4000K | 4400 | 40W | 1800mm/6ft |
| LT8G6C40W44 | 6500K | 4400 | 40W | 1800mm/6ft |

LED Eco T8 Tubes

- ✓ Retrofit with most T8 luminaires - (non dimming)
- ✓ Fragment retention PET film
- ✓ Tubes powered from one end



| CAT NO. | COLOUR TEMP | LUMENS | WATTAGE | SIZE |
|-------------|-------------|--------|---------|------------|
| LT8G2N10W90 | 4000K | 950 | 10W | 600mm/2ft |
| LT8G4N18W16 | 4000K | 1700 | 18W | 1200mm/4ft |
| LT8G5N22W20 | 4000K | 2000 | 22W | 1500mm/5ft |

*6500K option available

Guardian Indoor PIR

- ✓ Energy saving control for internal use
- ✓ Surface mount sensor with quick and easy install
- ✓ Perfect for LED or traditional lighting technology



SURFACE



| CAT NO. | DISTANCE | RANGE | TYPE | PACK QTY |
|-----------|----------|-------------|---------|----------|
| LGIP20CSW | 6 Metres | 360 Degrees | Surface | 50 |

Guardian Indoor PIR

- ✓ Energy saving control for internal use
- ✓ Surface mount sensor with quick and easy install
- ✓ Perfect for LED or traditional lighting technology



SLIMLINE SURFACE



| CAT NO. | DISTANCE | RANGE | TYPE | PACK QTY |
|------------|----------|-------------|---------|----------|
| LGIP20CSSW | 6 Metres | 360 Degrees | Surface | 50 |

Guardian Indoor PIR

- ✓ Energy saving control for internal use
- ✓ Recessed mount sensor with quick and easy install
- ✓ Perfect for LED or traditional lighting technology



RECESSED



| CAT NO. | DISTANCE | RANGE | TYPE | PACK QTY |
|-----------|----------|-------------|----------|----------|
| LGIP20CRW | 6 Metres | 360 Degrees | Recessed | 100 |

Guardian Outdoor PIR

- ✓ Energy saving control for external use
- ✓ Surface mount sensor with quick and easy install
- ✓ Perfect for LED or traditional lighting technology



TILT



| CAT NO. | DISTANCE | RANGE | COLOUR | PACK QTY |
|-----------|-----------|-------------|--------|----------|
| LGIP44WTW | 12 Metres | 180 Degrees | White | 50 |

Guardian Outdoor PIR

- ✓ Energy saving control for external use
- ✓ Surface mount sensor with quick and easy install
- ✓ Perfect for LED or traditional lighting technology



MULTI-DIRECTIONAL



| CAT NO. | DISTANCE | RANGE | COLOUR | PACK QTY |
|-----------|-----------|-------------|--------|----------|
| LGIP65WTB | 12 Metres | 180 Degrees | Black | 50 |

Guardian Outdoor PIR

- ✓ Energy saving control for external use
- ✓ Surface mount sensor with quick and easy install
- ✓ Perfect for LED or traditional lighting technology



MULTI-DIRECTIONAL



| CAT NO. | DISTANCE | RANGE | COLOUR | PACK QTY |
|-----------|-----------|-------------|--------|----------|
| LGIP65WTW | 12 Metres | 180 Degrees | White | 50 |

Guardian Outdoor PIR

- ✓ Energy saving control for external use
- ✓ Surface mount sensor with quick and easy install
- ✓ Perfect for LED or traditional lighting technology



TILT & SWIVEL



| CAT NO. | DISTANCE | RANGE | COLOUR | PACK QTY |
|-----------|-----------|-------------|--------|----------|
| LGIP44WSB | 12 Metres | 180 Degrees | Black | 50 |

Guardian Outdoor PIR

- ✓ Energy saving control for external use
- ✓ Surface mount sensor with quick and easy install
- ✓ Perfect for LED or traditional lighting technology



TILT & SWIVEL



| CAT NO. | DISTANCE | RANGE | COLOUR | PACK QTY |
|-----------|-----------|-------------|--------|----------|
| LGIP44WSW | 12 Metres | 180 Degrees | White | 50 |

Explore our **WHOLE RANGE...**

Explore a whole range of LED lighting possibilities from our full range of products and download the catalogue now at www.luceco.com

Also available, our market leading brands BG Electrical and Masterplug bring you the latest products in electrical accessories and portable power, including our market leading range of USB sockets and our Pro XT leads and reels designed for trade.

Download the catalogues now:

www.bgelectrical.uk - www.masterplug.com



FREE

Lighting Design & Technical Support

With over 100 years of combined lighting industry experience, our specialist and highly experienced engineers are on hand to offer informed advice and knowledge on our luminaire range and applications.

Our fully qualified lighting design team offer a complimentary lighting design service to provide you with project solutions, ensuring compliance to the latest standards and regulations.

Photometric data is available if required.

Email your requirements now to lighting-design@luceco.com



LUCECO



ROSS



01952 238100



sales@luceco.com

LUCECO

www.luceco.com

follow us:



@lucecoplc



@lucecogroup

Everything under one roof.

Did you know...

Luceco plc group of companies, BG Electrical, Luceco LED Lighting, Luceco LED Lighting, Masterplug Portable Power and Ross AV bring together an unrivalled product range making them the ideal partner for all of your projects.



For more information contact Sales on:
 Tel: 01952 238 100 Email: sales@luceco.com Web: www.luceco.com
 Luceco plc, Luceco Distribution Centre, Stafford Park 1 Telford, Shropshire TF3 3BD.



Luceco plc group of companies.