

**PHILIPS**

Lighting

Public lighting

A nighttime photograph of a park. In the foreground, a wooden boardwalk bridge with a curved, illuminated railing leads towards the background. Two people are walking away from the camera on the bridge. The bridge is lit from below, casting a warm glow. To the left, trees are illuminated with green lights. In the background, a white lighthouse-like structure is visible, and the sky is a deep blue. The overall scene is a well-lit, modern park at night.

Bring new life to  
your landmark



बृहन्मुंबई महानगरपालिका मुख्यालय

# An introduction to Philips Uni.

Our new Philips Uni luminaires offer a high-quality, economic and hassle-free lighting solution, to allow our partners and customers to create the right illumination experience that meets their design vision whenever and wherever they need.



## Various white and coloured lighting options

Available in 2700K, 3000K, 4000K; Red, Green and Blue mono colours; RGB and RGBW.



## High quality LEDs and optics

Standard 4 SDCM for white LEDs and 5nm wave length range for colored LEDs with anti-yellowing and anti-aging lenses.



## Easy and fast installation

Including IP67 male/female cable connectors for maximum safety and fast wiring.



## Reliable and long-lasting

Can operate under temperatures of -40°C to 50°C



## Drainage surface design

Luminaires' surfaces and end-caps are designed to drain water to minimise the common issue of dirt and water accumulation especially in uplighting applications.

# UniEdge

Compact luminaire designed for windows, doors and edge lighting

- RGBNW, 2700K, 3000K and 4000K
- Unique 3x90° optical distribution to illuminate architectural edges
- Robust Design & IP66 rating for outdoor use
- Adjustable -5° to +85° tilting angle
- Self-cleaning



## Ordering guide

Code Example	BCP390	4LED	27K	24V	3x90	
	Family	LED's	CCT / Colour	Voltage	Beam Angle	Control
	BCP390 = UniEdge	4LED	27K = 2700K 30K = 3000K 40K = 4000K RGBNW = RGBW(4000K)	24V = 24V DC	3x90 = 3x90°	- On/Off DMX = DMX

# UniPoint

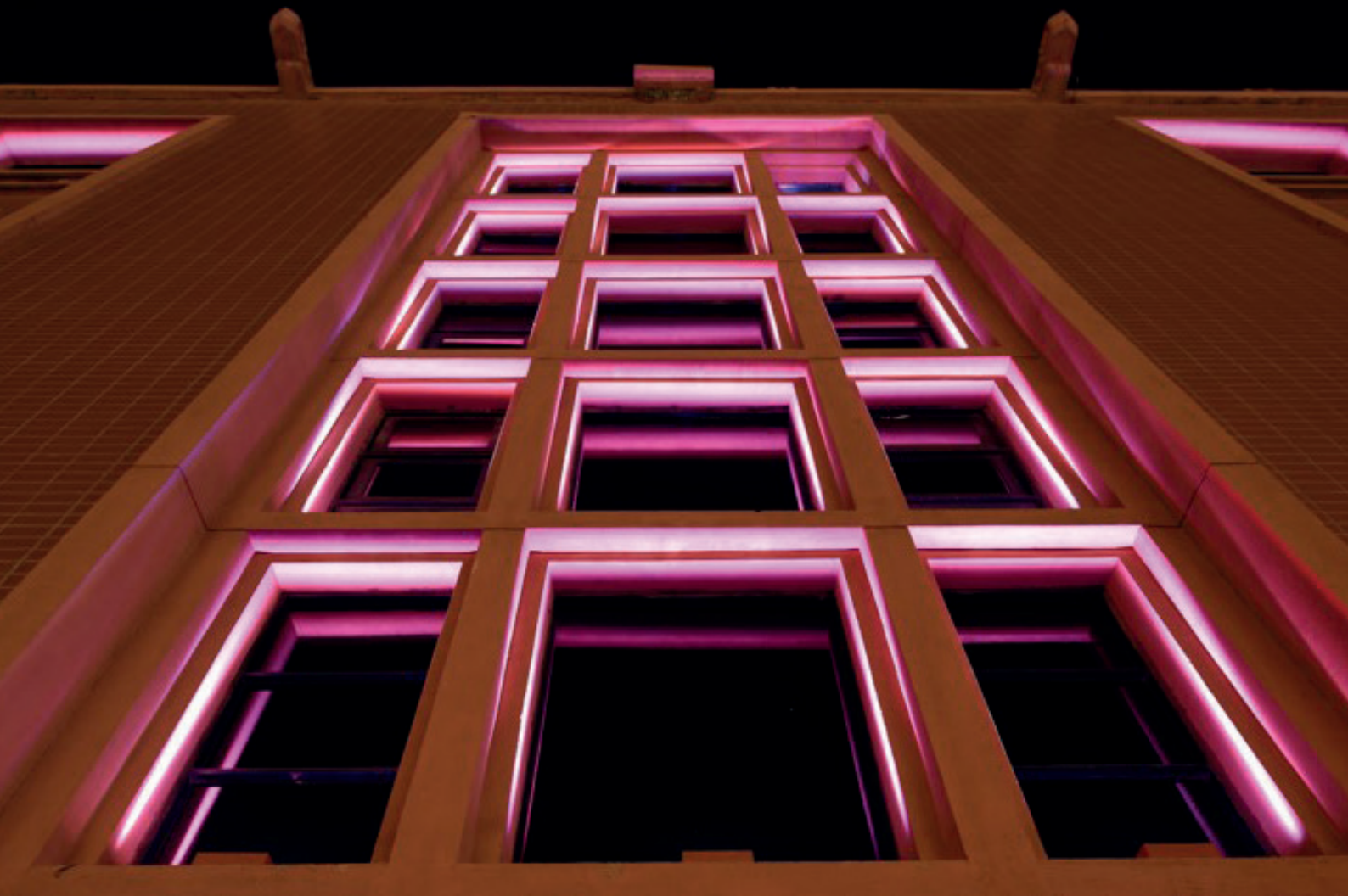
Designed for general and accent lighting whilst concealing the body of the luminaire

- Robust design
- Compact
- Contractor friendly installation
- IP66 / IK06
- Surface mounting; adjustable angle up to 140° (1&3LED) and 135° (5LED)



## Ordering guide

Code Example	BCP312	1LED	27K	WB
	Family	LED's	CCT / Colour	Beam Angle
	BCP312 = UniPoint	1LED 3LED 5LED	27K = 2700K 30K = 3000K 40K = 4000K	WB = Wide Beam MB = Medium beam NB = narrow beam



# Unilnground Linear

Recessed in-ground linear lighting to enhance your space

- Slim design look and feel
- High quality tempered glass cover, IK10
- Two lengths
- IP67 rating



### Ordering guide

Code Example	BBP403	LED50/WW	24v
	Family	CCT/Colour	Voltage
	BBP403 = 300mm	LED RGB = RGB	24V
	BBP412 = 1200mm	LED WW	

# Unilnground Round

Complete range of uplights to make your space more distinctive

- Robust design, IK10
- Round, slim shape
- Easy installation
- IP67 rating



BBP21X  
(ending in 2 or 3)

BBP34X  
(ending in 0,1,2,3 or 4)

### Ordering guide

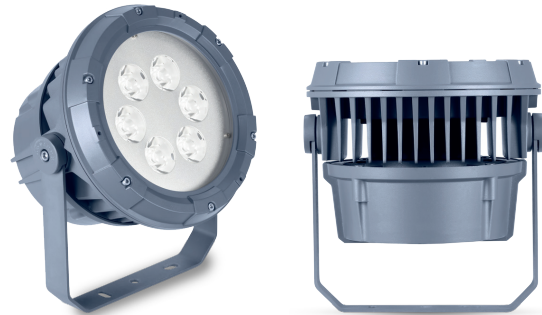
Code Example	BBP340	LED220	WW	20D
	Family	Lumen pack	CCT / Colour	Beam Angle
	BBP212	LED45 = 45lm	WW = 3000K	20D
	BBP213	LED110 = 110lm	R = Red	
	BBP340	LED220 = 220lm	G = Green	
	BBP341	LED540 = 540lm	B = Blue	
	BBP342	LED1200 = 1200lm		
	BBP343	LED1800 = 1800lm		
	BBP344	LED3600 = 3600lm		



# UniFlood C

Circular shaped, cost-effective LED floodlight designed for façade, landscape and outdoor flood lighting applications

- Range of colour temperatures
- Adjustable tilting angle
- Robust design with IP66 rating
- Glare shields available as an accessory
- Robust design, IK08



## Ordering guide

Code Example	BVP321	8LED	30K	10	
	Family	Number of LEDs	CCT / Colour	Beam angle	Control
	BVP321 = Compact	8LED	27K = 2700K	10	On/Off
	BVP322 = Small	9LED	30K = 3000K	15	DMX
	BVP323 = Medium	12LED	40K = 4000K	30	
	BVP324 = Large	18LED	RGB = RGB	45	
		24LED	RGBWW = RGBW (3000K)	60	
		36LED	RGBNW = RGBW(4000K)		
		54LED			
		72LED			

# UniBollard

Simple bollard for use in public spaces with different heights to fit your application

- Three different heights
- Sturdy aluminum housing
- Baseplate mounting
- 1,000lm output
- IP65 / IK06

## Ordering guide

Code Example	BCP212	LED1000/WW
	Family	CCT
	BCP210 = 450mm height	3000k
	BCP211 = 600mm height	
	BCP212 = 1200mm height	









©2021 Signify Holding. All rights reserved. The information provided herein is subject to change, without notice. Signify does not give any representation or warranty as to the accuracy or completeness of the information included herein and shall not be liable for any action in reliance thereon. The information presented in this document is not intended as any commercial offer and does not form part of any quotation or contract, unless otherwise agreed by Signify.

Philips and the Philips Shield Emblem are registered trademarks of Koninklijke Philips N.V. All other trademarks are owned by Signify Holding or their respective owners.

[www.philips.co.uk/lighting](http://www.philips.co.uk/lighting)