

Z LED[™]
UFO

PERFORMANCE

The best just got
Better

Z LED Performance High bay

Ansell
LIGHTING



5 Year
Warranty

Applications

Z LED Performance



Industrial applications

Workshops, production lines, assembly lines, warehouse and storage facilities



Commercial applications

Exhibition halls, event centres, gyms, large recreational facilities, sports halls and retail



Contact our Sales Team for more information:
Warrington: **01942 433333**
Belfast: **02890 773750**



Or visit our website to see the Z LED
Performance products: **www.anselluk.com**

Ideal for installation in to commercial settings such as gyms, large recreational facilities and sports halls



Contact our Sales Team for more information:
Warrington: **01942 433333**
Belfast: **02890 773750**



Or visit our website to see the Z LED
Performance products: **www.anselluk.com**

Pre-wired with 3M H05RN-F supply and dimming cable for quick and easy installation.

Latest high performance, highly efficient LED chips offer up to 60% energy savings compared to conventional high bays

Durable polycarbonate diffuser with individual LED lens technology offers superior control of light distribution

Robust die-cast aluminium housing / heatsink provides high IK08 impact rating along with optimum LED thermal management

Enhancing heat dissipation away from the LED array ensuring maximum product lifetime

Silicone gasket provides IP65 ingress protection

IP65 plug-in programmable microwave sensor, with built-in daylight sensor, provides flexible controls for all applications.



Contact our Sales Team for more information:
Warrington: **01942 433333**
Belfast: **02890 773750**



Or visit our website to see the Z LED
Performance products: www.anselluk.com



IK08

A high impact rating of IK08 ensures the fixture can withstand potential knocks and impacts, prolonging the life of the fixture.

IP65

The Z-LED Performance high bay has been designed with a high resistance to corrosion, wear and tear as well as full protection against ingress from water and dust. The IP65 rating ensures the product is suited for installation into harsh and high dependency environments such as internal or external workshops; where there may be exposure to water, as well as dust in the air.



Contact our Sales Team for more information:
Warrington: **01942 433333**
Belfast: **02890 773750**



Or visit our website to see the Z LED
Performance products: **www.anselluk.com**

Robust Design

The high specification and engineered die-cast aluminium body acts as a heatsink; dissipating heat away from the light engine, whilst simultaneously ensuring the Z-LED Performance is highly durable and robust. The solid construction suits installation into industrial applications such as warehouses, storage facilities and workshops. The housing has been designed to withstand harsh environments.

Z-LED Performance benefits from a highly efficient polycarbonate diffuser with integral individual LED lens technology. Durable and lightweight in construction; while offering optimum performance and glare control. The polycarbonate lens ensures the luminaire is suitable for food processing applications.



Contact our Sales Team for more information:
Warrington: **01942 433333**
Belfast: **02890 773750**



Or visit our website to see the Z LED
Performance products: **www.anselluk.com**

Energy efficient



The efficient Z-LED Performance offers an impressive efficacy of up to 150 Lm/W; reducing power consumption and lowering energy costs. Optimum performance and optics paired with the high Lm/W efficacies ensure fewer luminaires are required to achieve required light levels and uniformity.

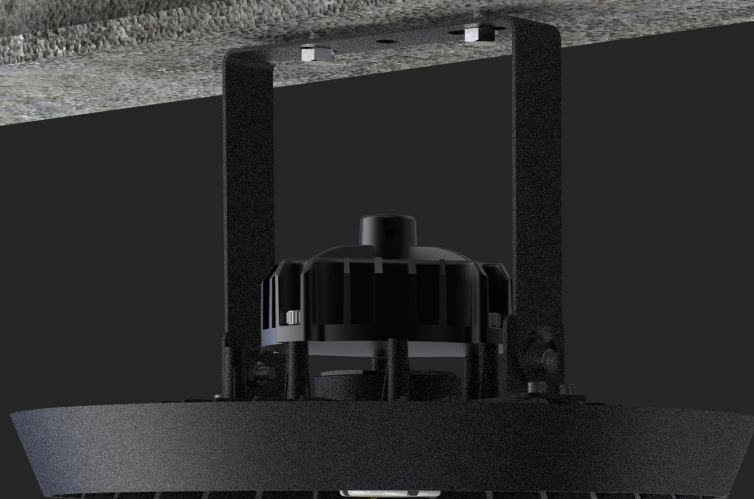
An impressive LED lifespan of L80 B10 54,000 hours ensures minimal lumen depreciation over the lifetime of the luminaire.



Contact our Sales Team for more information:
Warrington: **01942 433333**
Belfast: **02890 773750**



Or visit our website to see the Z LED
Performance products: **www.anselluk.com**



Mounting options

A range of sizes and outputs (100W, 150W & 200W) ensures the Z-LED Performance is versatile; fit for industrial and commercial settings. It is ideal for use in workshops, production lines, warehouses and storage facilities. With the option of ceiling mounted, suspended and wall mounted, the luminaire is flexible and ideal for a range of applications. Z-LED Performance can also be used in commercial applications such as exhibition or event halls, gyms, sports halls and retail environments.



Contact our Sales Team for more information:
Warrington: **01942 433333**
Belfast: **02890 773750**



Or visit our website to see the Z LED
Performance products: **www.anselluk.com**

Operating temperature

-30°



45°

The Z-LED Performance has been constructed to withstand both high and low application ambient temperatures. It can be installed in applications which experience temperatures as low as -30°C, such as industrial refrigeration installations.

The die-cast aluminium housing offers superior heat dissipation to allow the product to operate in areas where the ambient temperature can reach 45°C.



Contact our Sales Team for more information:
Warrington: **01942 433333**
Belfast: **02890 773750**



Or visit our website to see the Z LED
Performance products: **www.anselluk.com**

Datasheet

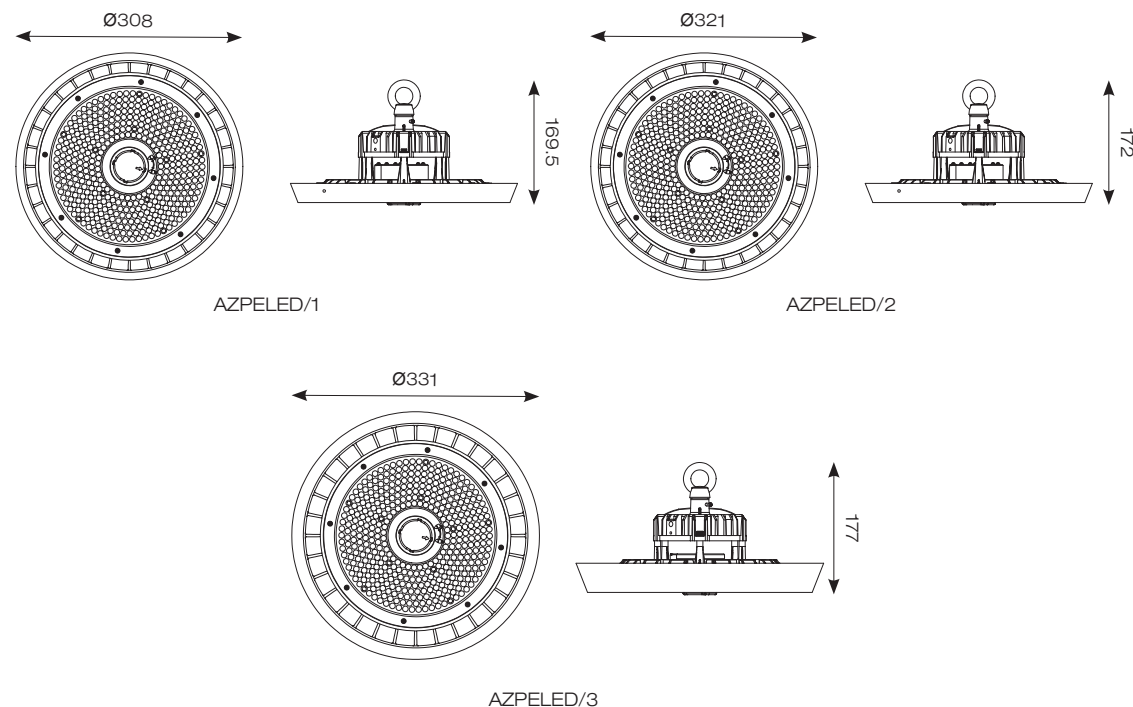


- Robust LED low/high bay for industrial, commercial and retail applications
- Die-cast powder coated construction and heatsink for optimum thermals and performance
- Alternative installation options by means of drop rods, jack chain and catenary wire. Bracket accessories available for ceiling or wall mounting
- High specification IP65 and IK08 ratings
- 100W exceeds performance of 150W HQI
- 150W exceeds performance of 250W HQI
- 200W comparable to 400W HQI
- Pre-wired with 3M of H07RN-F cable for ease and speed of installation
- Microwave sensor programmer and remote available for versatile commissioning
- LED lifespan L80 B10 54,000 hours
- 1-10V dimmable as standard

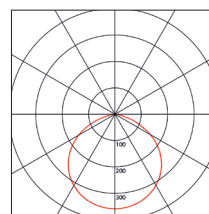
LED Information

CRI	Ra 80
CCT	4000K
Input	220/240V
Hertz	50/60Hz
Operating Temp	-30°C to 45°C

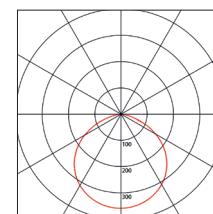
Line Drawing



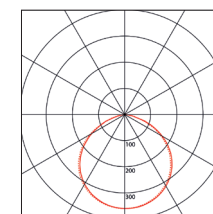
Photometric Guide



Wattage: 100W
Lumen delivered: 15242lm
Lm/W: 152lm



Wattage: 150W
Lumen delivered: 23778lm
Lm/W: 152lm



Wattage: 200W
Lumen delivered: 30086lm
Lm/W: 151lm



Contact our Sales Team for more information:
Warrington: **01942 433333**
Belfast: **02890 773750**



Or visit our website to see the Z LED
Performance products: www.anselluk.com

Ansell Electrical Products Ltd

Unit 6B, Stonecross Industrial Park,
Yew Tree Way,
Warrington,
WA3 3JD

+44 (0) 1942 433333

+44 (0) 1942 433433

saleswarrington@anselluk.com

Ansell (Sales & Distribution) Ltd

Unit 2, M2 Business Park,
Duncrue Street,
Belfast,
BT3 9AQ

+44 (0) 2890 773750

+44 (0) 2890 773783

sales@anselluk.com

***Ansell Lighting
Innovation and Design Office***

Innovation and Design Office
Suite 1A, Littlemead Offices,
Tangmere Road,
Chichester,
West Sussex
PO20 2EU

Ansell Lighting China

Yu Ge Commercial Building
Cuiyi Road,
Dongguan City,
Guangdong Province,
Peoples Republic of China



Contact our Sales Team for more information:
Warrington: **01942 433333**
Belfast: **02890 773750**



Or visit our website to see the Z LED
Performance products: www.anselluk.com