





Project

Skynet - Wilmslow, UK



Z LED High Bay UFO p439

**437**

Deco LED High Bay

**439**

*Z LED
High Bay UFO*

**440**

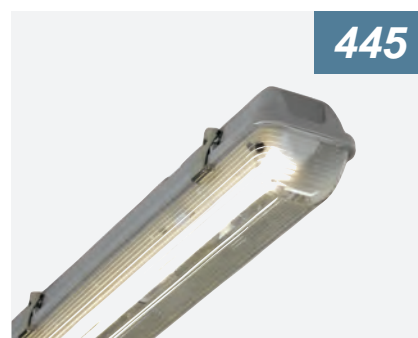
ForceLINE LED

**442**

Opti-Lux LED Linear

**443**

*Pre-Wired T8 Non-
Corrosive for LED Tubes*

**445**

*Stormloc LED
Non-Corrosive*



*Tornado Pro LED
Non-Corrosive*



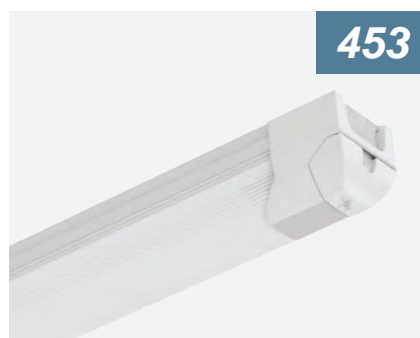
*Tornado LED
Non-Corrosive*



*Tornado LED 110V
Non-Corrosive*



*Sleek LED 110V
Bulkhead*



Airbeam LED Batten



Topline 6 LED Batten



Designed to
Deliver...

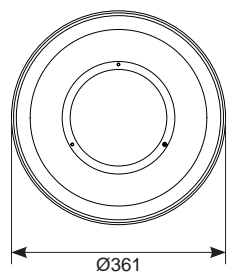
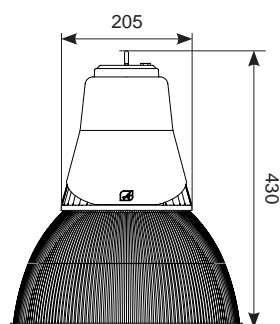
Deco High Bay LED

Supplied c/w Integral Driver



437

- Decorative modern LED pendant supplied with either polycarbonate refractor or aluminium reflector
- Suitable for industrial, commercial and retail applications
- 41W exceeds performance of 70W HQI
- 96W exceeds performance of 150W HQI
- Matt grey textured powder coated finish
- LED lifespan L70 54,000 hours



LED Information

Total (Watts)	41W	96W
Lumens Delivered		
/ALU	4760lm	10437lm
/PC	4678lm	10375lm
Lm/W		
/ALU	114lm	109lm
/PC	116lm	108lm
Beam Angle		
/PC		68°
/ALU		63°
CRI		Ra 80
CCT		4000K
Input		230V
Hertz		50/60Hz
Operating Temp		-20°C to 25°C



ADHBLED1/PC

Powered by
TRIDONIC
enlightening your ideas



ADHBLED2/ALU

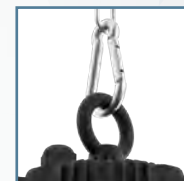
Code	Lamp	Description
ADHBLED1/PC	LED	41W - c/w PC Refractor
ADHBLED2/PC	LED	96W - c/w PC Refractor
ADHBLED1/ALU	LED	41W - c/w Aluminium Reflector
ADHBLED2/ALU	LED	96W - c/w Aluminium Reflector
Options	/DD	Digital dimming (DD1/DD2/DD3/DD4)
Accessories	ADHBLED/PC/BC	PC Bottom Cover (360mm)
	ADHBLED/SK	Suspension Kit

Warrington: +44 (0) 1942 433333
Belfast: +44 (0) 2890 773750



Z LEDTM UFO

Pre-wired with 3m of H07RN-F cable for ease and speed of installation



Supplied eye bolt aiding speedy point-for-point installation

IK08 Impact Rating

Robust die-cast body for any application

Highly effective die-cast aluminium heat sink for optimum heat dispersion

High efficiency LED packages and wide beam angles to suit a wide range of applications

Silicone Gasket provides IP65 Ingress Protection

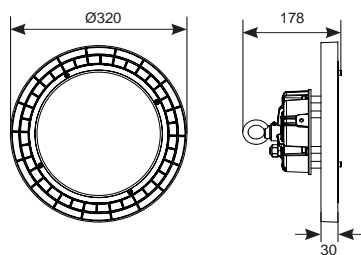
Polycarbonate diffuser offers durable protection

316L stainless steel allen bolts for protection against corrosion

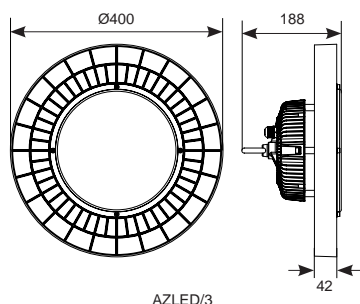
Z LED UFO Product Code	Z LED UFO (4000K) Delivered Lumens	HID Equivalent Lamp Type	HID Equivalent Lumens	HID Delivered Lumens (65% DLOR)
AZLED/1	11858lm	150W HQI-E	13,300lm	8645lm
AZLED/2	18443lm	250W HQI-E	23,800lm	15470lm
AZLED/3	23965lm	400W HQI-E	41,000lm	26650lm

Conventional lamp sources do not utilise all of the lumen output efficiently as some of the light is directed upwards and interacts with light reflected back into the lamp. Therefore the actual usable light is only 65% which is the downward light output ratio. LEDs by contrast project all light on a single plane and thus all light is usable.

- Robust LED low/high bay for industrial, commercial and retail applications
- 1-10V dimmable as standard
- Pre-wired with 3m of H07RN-F cable for ease and speed of installation
- Microwave sensor programmer available for versatile commissioning
- Alternative installation options by means of drop rods, jack chain / catenary wire
- 96W comparable to 150W HQI
- 146W comparable to 250W HQI
- 197W comparable to 400W HQI
- Die-cast powder coated construction and heatsink for optimum thermal performance
- TP(a) as standard
- LED lifespan L70 50,000 hours



AZLED/1 + AZLED/2



AZLED/3

LED Information

Total (Watts)	96W 146W 197W	
Lumens Delivered	4000K	6500K
96W	12090lm	12593lm
146W	19224lm	19064lm
197W	25292lm	26409lm
Lm/W		
96W	128lm	130lm
146W	131lm	127lm
197W	128lm	129lm
CRI	Ra 80	
CCT	4000K 6500K	
Input	200V-240V	
Hertz	50/60Hz	
Operating Temp	-40°C to 40°C	



Z LED High Bay UFO

Supplied c/w Integral Driver



439



AZLED/REF -
Aluminium Reflector



AZLED/FB1 -
Mounting Bracket Accessory



AZLED/MWS - Microwave Sensor Fitted

Microwave Sensor

- IP65 Rated Enclosure.
- 3M - 15M Mounting height ideal for any low to high level mounting heights.
- Automatic 1-10V Dimming with time delay and pre-set dimming levels to select.
- Built-in daylight sensor for enhanced energy saving via daylight harvesting.
- Dip-switch or remote control commissioning allows for versatile sensor programming; options include, Hold Time, Stand-By Dim Level, Daylight Sensor and many more.

Code	Lamp	Description
AZLED/1	LED	96W - Cool White
AZLED/2	LED	146W - Cool White
AZLED/3	LED	197W - Cool White

AZLED/1/DL	LED	98W - Daylight
AZLED/2/DL	LED	151W - Daylight
AZLED/3/DL	LED	198W - Daylight

Options	/M3	Emergency
	/MWS	Microwave Sensor

Accessories	AZLED/REF	Aluminium Reflector
	AZLED/FB1	Mounting Bracket Accessory Z-LED LED Highbay
	AZLED/MWSP	High Bay Microwave Sensor Programmer

Warrington: +44 (0) 1942 433333
Belfast: +44 (0) 2890 773750

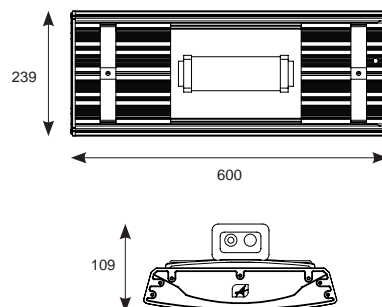


ForceLINE LED

Supplied c/w Integral Driver



- Powerful and robust IP65 low/high bay, perfect for the demands of industrial applications
- Mounting brackets supplied as standard for droprod or chain/wire installation
- Comparable to 4 x 55W PL
- Powered by Philips
- Die-cast aluminium construction provides enhanced thermal performance for longer LED lifespan
- Anti-glare polycarbonate diffuser maximises performance and light output
- LED lifespan L70 51,000 hours



Code	Lamp	Description
AFLLED2	LED	156W - Cool White

Options		
/M3	Emergency	
/SM3	Self-Test emergency	
/DM3	DALI emergency	
/DD	Digital Dimming (DD1/DD3/DD4)	
/MWS	Integral Microwave Sensor	

LED Information

Total (Watts)	156W
Lumens Delivered	15474lm
Lm/W	99lm
CRI	Ra 80
CCT	4000K
Input	230V
Hertz	50Hz
Operating Temp	-20°C to 50°C



—FORCE LINE^{LED}

441

Optional Microwave sensor accessory

Hytronik high frequency motion sensor
Hold time: 5secs - 30mins
LUX: 2 - 50 lux
Detection Range: 12m

*Powered by Philips
Xitanium driver*

*High quality die-cast
end caps.*

*Aluminium extruded
housing for thermal
management to achieve
longer LED lifespan*

*Latest LED chips for
maximum efficiency
and performance*

*Silicone gasket provides
IP65 ingress protection*

*Anti glare polycarbonate diffuser
maximises performance and light
distribution*

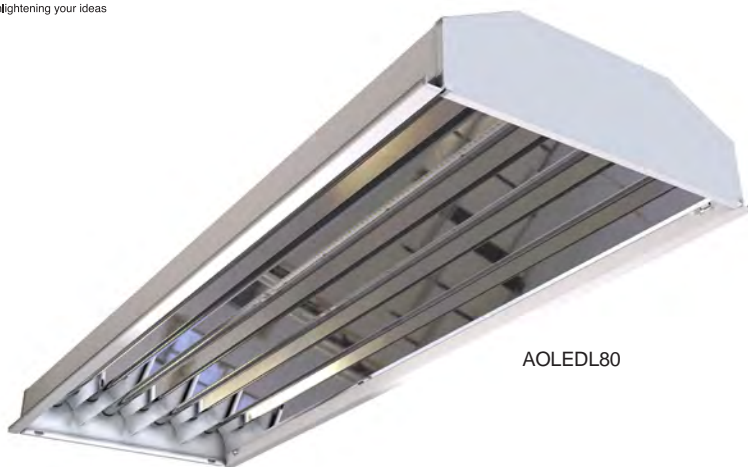
Opti-Lux LED Linear

Supplied c/w Integral Driver



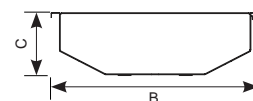
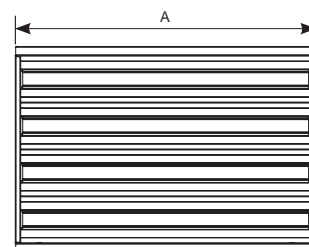
AOLEDL55

Powered by
TRIDONIC
▼ enlightening your ideas



AOLEDL80

- LED Low / High Bay suitable for industrial and commercial applications
- 92W performance comparable to 4x55W PL
- 160W exceeds performance of 4x49W T5
- Instant light output and unlimited switching
- Supplied c/w 3 metre catenary suspension kit
- Mild Steel powder coat construction
- Mirror finished reflector optimises light output for maximum efficiency
- LED lifespan L70 54,000 hours
- On site commissioning recommended for all installations incorporating sensors



Code	Lamp	Description	A	B	C
AOLEDL55	LED	92W - Cool White	615	410	120
AOLEDL80	LED	160W - Cool White	1455	410	120
AOCONTROLLER		Sensor Hand Controller			
AOCOMMISSION		On-site Commissioning per day			

Options	/M3	Emergency
	/DD	Digital Dimming (DD1/DD2/DD3/DD4)
	/SEN1	Presence Detector
	/SEN3	Presence Detector and Daylight Dimming

Accessories	AOLEDL55/WG	Wire Guard (615mm)
	AOLEDL80/WG	Wire Guard (1455mm)

LED Information

Total (Watts)	92W
	160W

Lumens Delivered	
92W	12386lm
160W	19236lm

Lm/W 92W	135lm
-----------------	-------

Lm/W 160W	120lm
------------------	-------

CRI	Ra 80
------------	-------

CCT	4000K
------------	-------

Input	220/240V
--------------	----------

Hertz	50/60Hz
--------------	---------

Operating Temp	-20°C to 50°C
-----------------------	---------------



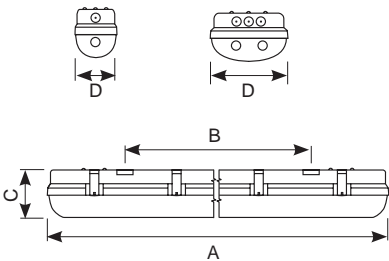
IP65 T8 Pre-Wired Non Corrosive For LED Tubes

Non Corrosive supplied Less Control Gear and Lamp



443

- Mains Voltage Non Corrosive for Ansell T8 LED Tubes
- Fixture supplied with lockable stainless steel clips as standard



Code	Lamp	Description	A	B	C	D	Clips
ADP2	LED	1 x 600mm for LED Tube	655	478	110	105	4
ADP4	LED	1 x 1200mm for LED Tube	1265	907	110	105	8
ADP5	LED	1 x 1500mm for LED Tube	1565	907	110	105	10
ADP2X2	LED	2 x 600mm for LED Tube	655	478	110	165	4
ADP2X4	LED	2 x 1200mm for LED Tube	1265	907	110	165	8
ADP2X5	LED	2 x 1500mm for LED Tube	1565	907	110	165	10



Warrington: +44 (0) 1942 433333
Belfast: +44 (0) 2890 773750



StormlocTM ELEMENT PROTECTION **LED**

Unique design of brackets for BESA box mounting or direct ceiling mounting

UV stabilised polycarbonate base for durability and strength

Heavy duty lockable stainless steel clips as standard

TRIDONIC
and Philips drivers
(dimnable option available)

Integral microwave sensor option

Dedicated LED circuit for integral Self-Test emergency option

Two fused terminal blocks for surge protection

Aluminium gear tray for thermal management to maximise lifetime of LED array

Latest LED chips for maximum performance and efficiency

Visiluxe optical lens maximises performance and light distribution

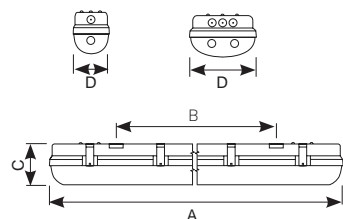
Optical lens securing end cap

Provides appearance of traditional fluorescent

Shockproof polycarbonate diffuser for high durability and strength



- Up to 48% energy saving compared to T8 fluorescent
- Light output exceeds performance of T8 and T5 fluorescent by up to 37%
- LED performance allows point for point replacement of existing fluorescent luminaires
- Internal linear Visiluxe optical lens for maximum performance and light distribution. Provides appearance of traditional fluorescent
- Instant light output with unlimited switching
- Unique luminaire fixing clip design allows option of mounting onto BESA box or directly onto ceiling surfaces
- Lockable heavy duty stainless steel clips supplied as standard for added safety and security
- Polycarbonate base and diffuser maximises durability and strength
- Powered by Philips and Tridonic drivers
- Self-test emergency as standard
- CorridorFUNCTION for dimmable microwave sensor models
- LED lifespan
L70 56,000 hours



LED Information

Total (Watts)	20W	39W
	29W	58W
	46W	86W
Lumens Delivered	2440lm	4698lm
	3534lm	6978lm
	3652lm	7109lm
Lm/W	122lm	120lm
	122lm	120lm
	79lm	83lm
CRI	Ra 80	
CCT	4000K	
Input	230V	
Hertz	50Hz	
Operating Temp	-20°C to 40°C	



Stormloc IP65 LED Non-Corrosive

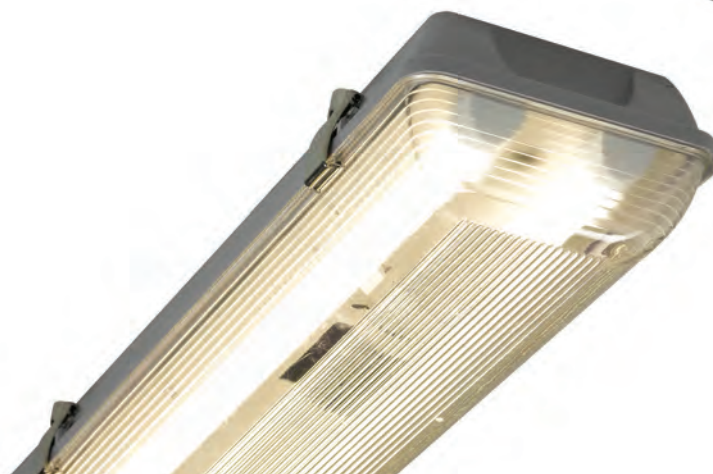
Supplied c/w Integral Driver



445



Internal high performance optical lens



Code	Lamp	Description	A	B	C	D
ASLED4	LED	20W	1265	907	110	105
ASLED5	LED	29W	1565	907	110	105
ASLED6	LED	46W	1858	1170	110	105
ASLED2X4	LED	39W	1265	907	110	165
ASLED2X5	LED	58W	1565	907	110	165
ASLED2X6	LED	86W	1858	1170	110	165

Options

/M3	Self-Test Emergency
/DD	Digital Dimming (DD1/DD2/DD3/DD4)
/MWS	Integral Microwave Sensor

Warrington: +44 (0) 1942 433333
Belfast: +44 (0) 2890 773750



Tornado Pro LED Non-Corrosive

Supplied c/w Integral Driver

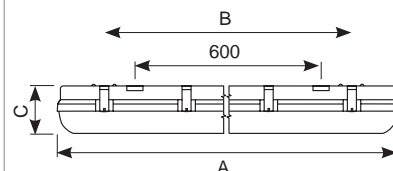
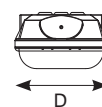


Stainless
Steel
Clips as
standard



Tornado Pro
ELEMENT PROTECTION LED

- Exceeds performance of standard T5 fluorescent
- Ultra slim IP65 LED NCF linear.
- Unique base design caters for multiple installation methods.
- Installer friendly imbedded features aid accurate and fast installation for any application.
- Quick release LED array / gear tray assembly provides the installer the means to faster installation / maintenance.
- Fast latching / permanently located stainless steel side clips ensure a quick and secure connection
- Tridonic LED driver as standard
- Self-test emergency as standard with Li-ion battery technology, reducing charge time and running costs
- LED lifespan
L80 B10 54,000 hours



Powered by
TRIDONIC
▼ enlightening your ideas

Code	Lamp	Description	A	B	C	D
ATORPLED4	LED	20W	1265	860	70	85
ATORPLED5	LED	29W	1565	960	70	85
ATORPLED6	LED	35W	1865	1200	70	85
ATORPLED2X4	LED	41W	1265	860	70	115
ATORPLED2X5	LED	61W	1565	960	70	115
ATORPLED2X6	LED	78W	1865	1200	70	115

Options	/M3	Self-Test emergency
	/DM3	DALI emergency
	/OCTO	OCTO Smart Control
	/DD	Digital Dimming (DD1/DD2/DD3/DD4)
	/MWS	Integral Microwave Sensor

LED Information

Total (Watts)	20W	41W
	29W	61W
	35W	78W
Lumens Delivered	2331lm	4457lm
	3209lm	6314lm
	3702lm	8204lm
Lm/W	117lm	109lm
	111lm	104lm
	106lm	105lm
CRI	Ra 80	
CCT	4000K	
Input	230V	
Hertz	50Hz	
Operating Temp	-10°C to 40°C	





Tornado Pro

ELEMENT PROTECTION LED

447



Tornado IP65 LED Non-Corrosive

Supplied c/w Integral Driver



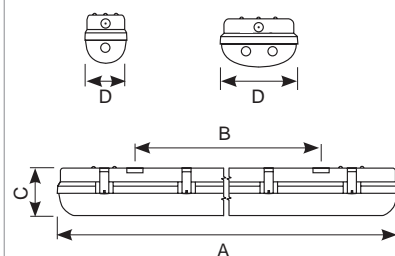
Stainless
Steel
Clips as
standard



Tornado
ELEMENT PROTECTION **LED**



- LED Performance allows point-to-point replacement of existing fluorescent luminaires
- Light output exceeds performance of T8 and T5 fluorescent
- Unique luminaire fixing clip design allows option of mounting onto BESA box
- Lockable heavy-duty stainless steel clips supplied as standard for added safety and security
- Self-test emergency as standard
- LED lifespan L70 30,000 hours



Code	Lamp	Description	A	B	C	D
ATORLED4	LED	20W	1266	860	75	85
ATORLED5	LED	28W	1566	960	75	85
ATORLED6	LED	35W	1866	1030	80	85
ATORLED2X4	LED	40W	1266	860	75	118
ATORLED2X5	LED	58W	1566	960	75	118
ATORLED2X6	LED	71W	1855	1030	80	118

Options	/M3	Self-Test Emergency
	/OCTO	OCTO Smart Control
	/DD	Digital Dimming (DD1/DD2/DD3/DD4)
	/MWS	Integral Microwave Sensor

LED Information

Total (Watts)	20W	40W
	28W	58W
	35W	71W
Lumens Delivered	2088lm	4425lm
	3230lm	6353lm
	3823lm	7320lm
Lm/W	104lm	110lm
	115lm	110lm
	109lm	103lm
CRI	Ra 80	
CCT	4000K	
Input	230V	
Hertz	50Hz	
Operating Temp	-10°C to 40°C	





Project - Source Park
Hasting, UK

Tornado 110V LED

Supplied c/w Integral Driver



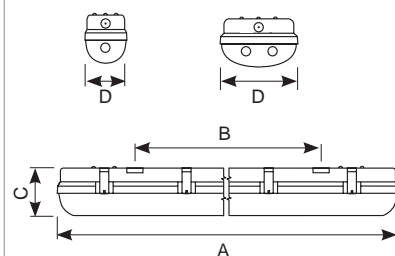
Stainless
Steel
Clips as
standard



Tornado
ELEMENT PROTECTION **LED**



- LED Performance allows point-to-point replacement of existing fluorescent luminaires
- Suitable for all types of 110V site lighting
- Light output exceeds performance of T8 and T5 fluorescent
- Unique luminaire fixing clip design allows option of mounting onto BESA box
- Lockable heavy-duty stainless steel clips supplied as standard for added safety and security
- Self-test emergency as standard
- LED lifespan L70 30,000 hours
- Non-dimmable



LED Information

Total (Watts)	10W	20W
	20W	40W
	28W	58W
Lumens Delivered	1164lm	2297lm
	2088lm	4225lm
	3230lm	6353lm
Lm/W	118lm	118lm
	104lm	110lm
	115lm	110lm
CRI	Ra 80	
CCT	4000K	
Input	100/240V	
Hertz	50Hz	
Operating Temp	-10°C to 40°C	

Code	Lamp	Description	A	B	C	D
ATORLED2/110V	LED	10W	656	360	75	85
ATORLED4/110V	LED	20W	1266	860	75	85
ATORLED5/110V	LED	28W	1566	960	75	85
ATORLED2X2/110V	LED	20W	656	360	75	118
ATORLED2X4/110V	LED	40W	1266	860	75	118
ATORLED2X5/110V	LED	58W	1566	960	75	118

Options	/M3	Self-Test Emergency
	/MWS	Integral Microwave Sensor



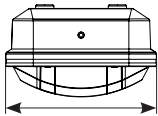
Sleek LED 110V Polycarbonate Bulkhead

Supplied c/w Integral Driver

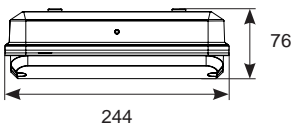


451

- All polycarbonate multi-purpose bulkhead
- Exceeds performance of 9W PL
- Unique Visiluxe diffuser allows 90% light transmission from LED source for increased performance
- Suitable for all types of site lighting
- Instant light output and unlimited switching
- Red diffuser accessory available for applications that require warning indication luminaires
- LED lifespan L70 56,000 hours
- Non-dimmable



124



244



Sleek 110V fitted with red polycarbonate Lens accessory

LED Information

Total (Watts)	5W
Lumens Delivered	424lm
Lm/W	85lm
CRI	Ra 80
CCT	4000K
Input	110V
Hertz	50Hz
Operating Temp	-10°C to 40°C



Code	Lamp	Description
ASBLED/110V	LED	5W - Yellow Base
Options	/PC	Electronic Photocell
	/MWS	Integral Microwave Sensor
Accessory	ASBLED/DIFF/RED	Red Polycarbonate Lens

Warrington: +44 (0) 1942 433333
Belfast: +44 (0) 2890 773750



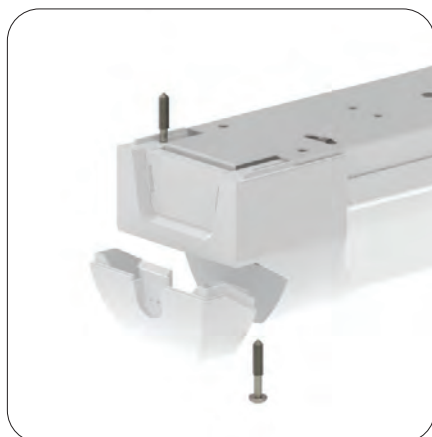
Installation Features



Push Release End Cap



20mm Conduit Entry Facility



End Cap Fixing Option



***Ceiling Mounting
Continuous Fixings***

- *Push and release end cap for quick access*

- *Connection option via 20mm conduit entry*

- *Optional fixing through end cap if required*
- *BESA box fixing as standard*

- *Unique ceiling mounting 'shunt' facility provides installer with flexibility and ease of adjustment when continuous mounting*

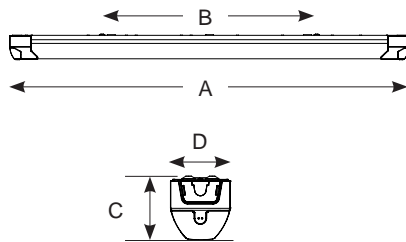
Airbeam LED Batten

Supplied c/w Integral Driver



453

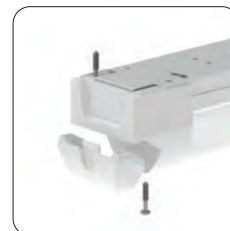
- High performance LED batten for multi-purpose applications
- Up to 56% energy saving compared to T8 fluorescent
- Powered by Philips and Tridonic drivers
- Steel body construction with powder coat finish
- Polycarbonate reeded diffuser and end caps
- Instant light output with unlimited switching
- Self-test emergency as standard
- CorridorFUNCTION for dimmable microwave sensor models
- LED lifespan L70 56,000 hours



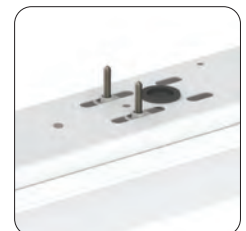
Push Release End Cap



20mm Conduit Entry Facility



End Cap Fixing Option



Ceiling Mounting Continuous Fixings

LED Information

Total (Watts)	24W	52W
	33W	61W
	42W	84W
Lumens Delivered	2778lm	5517lm
	3608lm	6407lm
	4189lm	7910lm
Lm/W	116lm	106lm
	109lm	105lm
	100lm	94lm
CRI	Ra 80	
CCT	4000K	
Input	230V	
Hertz	50Hz	
Operating Temp	0°C to 25°C	

	Code	Lamp	Description	A	B	C	D
Standard	ABLED4	LED	1 x 24W	1220	600	77	76
	ABLED5	LED	1 x 33W	1525	600	77	76
	ABLED6	LED	1 x 42W	1820	600	77	76
	ABLED2X4	LED	1 x 52W	1220	600	77	76
	ABLED2X5	LED	1 x 61W	1525	600	77	76
	ABLED2X6	LED	1 x 84W	1820	600	77	76

Options	/M3	Self-Test Emergency
	/OCTO	OCTO Smart Control
	/DD	Digital Dimming (DD1/DD2/DD3/DD4 - ABLED2X6 Not Available)
	/MWS	Integral Microwave Sensor



Warrington: +44 (0) 1942 433333
Belfast: +44 (0) 2890 773750



Topline 6 LED Batten

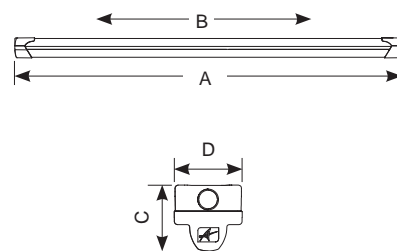
Supplied c/w Integral Driver



Powered by
TRIDONIC
▼ enlightening your ideas



- High performance LED batten for multi-purpose applications
- Exceeds performance of T5 equivalents
- Steel body construction with powder coat finish
- Unique opal diffuser design for optimum performance and light distribution
- Polycarbonate end caps
- Instant light output with unlimited switching
- Self-test emergency as standard
- LED lifespan L70 36,000 hours



Code	Lamp	Description	A	B	C	D
ATLLED4	LED	26W - Cool White	1220	600	65	65
ATLLED5	LED	34W - Cool White	1525	600	65	65
ATLLED6	LED	41W - Cool White	1745	600	65	65
ATLLED2X4	LED	47W - Cool White	1220	600	65	65
ATLLED2X5	LED	61W - Cool White	1525	600	65	65
ATLLED2X6	LED	72W - Cool White	1745	600	65	65

Options	/M3	Self-Test Emergency
	/MWS	Integral Microwave Sensor
	/OCTO	OCTO Smart Control
	/DD	Digital Dimming (DD1/DD2/DD3/DD4)

LED Information

Total (Watts)	26W	47W
	34W	61W
	41W	72W
Lumens Delivered	2616lm	4939lm
	3656lm	6325lm
	4814lm	8232lm
Lm/W	100lm	105lm
	107lm	103lm
	117lm	114lm
CRI	Ra 80	
CCT	4000K	
Input	220/240V	
Hertz	50Hz	
Operating Temp	-10°C to 40°C	



TOP LINE 6™

LED Batten

455

