





## *Project*

*Dudley College of Technology  
West Midlands, UK*

---



*Endurance LED Panel p480*

# Commercial

---



*Otto CCT LED  
Suspended Linear*



*Millau LED  
Suspended Linear*



*Vasco LED  
Suspended Linear*



*Sidu LED  
Suspended Linear*



*Eaves LED  
Recessed Linear*



*Gemini LED  
Surface Linear*



*Crescent LED  
Surface Linear*

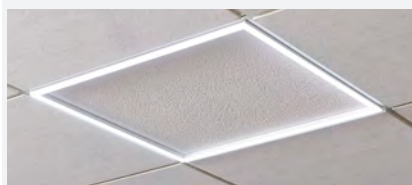


*Suspended / Surface Linear*



*Brooklyn LED  
Bi-directional Panel*

475



*Spektrum LED CCT  
Frame*

476



*Recessed LED Panels*

484



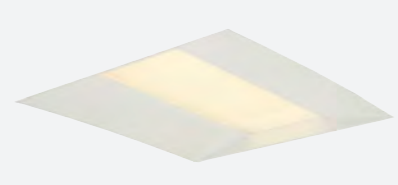
*Recessed LED  
Panel Accessories*

486



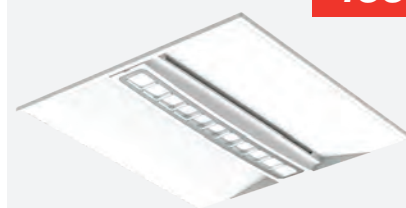
*IP65 Defender LED  
Recessed Clean Air*

487



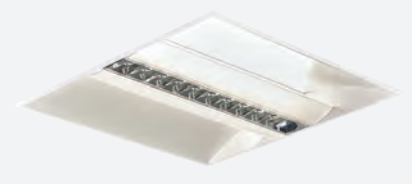
*Lota LED Troffer*

488



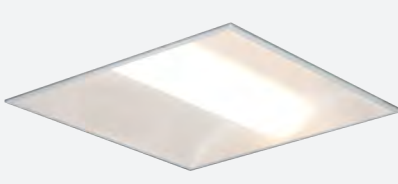
*Gridline Duo LED  
Recessed Indirect*

489



*Venus LED  
Recessed Indirect*

490



*Neptune CCT LED  
Troffer*

491



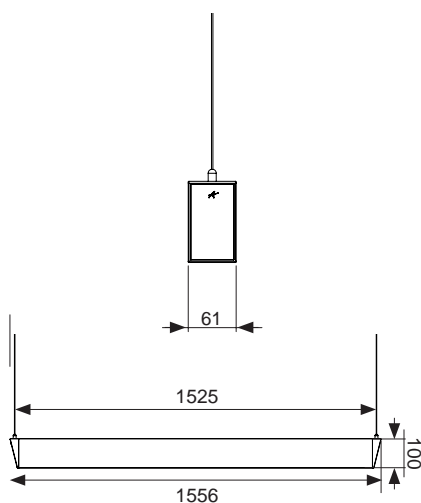
*Pluto LED*



*Designed to*  
***Deliver...***

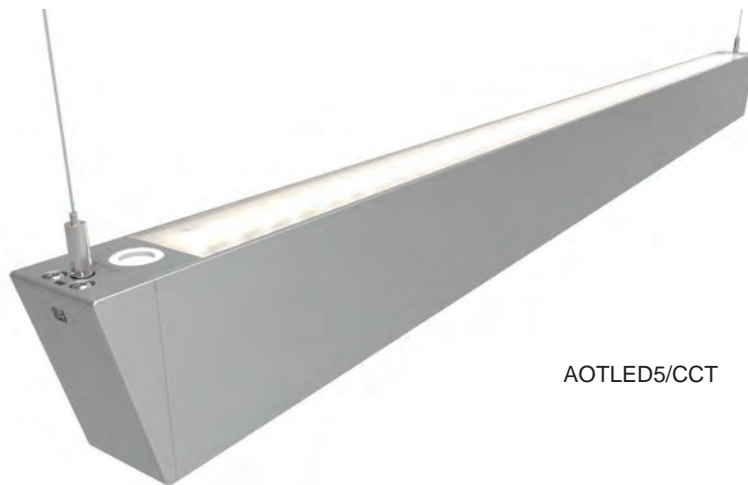


- Architectural suspended linear for office, retail and educational applications
- Die-Cast aluminum end caps
- Slim profile available in White (RAL9010) and Aluminium (RAL9006)
- Selectable CCT between 3000K and 4000K output
- Supplied bi-directional light output as standard (directional only option can be selected if required)
- Suitable for individual or continuous suspension
- Supplied c/w 1.5m suspension kit as standard
- Outperforms 28W and T5 fluorescent equivalent
- LED lifespan LM80 42,000 hours



### LED Information

Total (Watts)	45W	86W
Lumens Delivered		
Cool White	4052lm	7487lm
Warm White	3861lm	7185lm
Lm/W		
Cool White	92lm	86lm
Warm White	86lm	84lm
CRI		Ra 80
CCT		4000K 3000K
Input		230V
Hertz		50/60Hz
Operating Temp		-25°C to 50°C



AOTLED5/CCT



AOTLED5/W/CCT

	Code	Lamp	Description
Bi-Directional	AOTLED5/CCT	LED	45W - Cool White/Warm White - Aluminium
	AOTLED2X5/CCT	LED	86W - Cool White/Warm White - Aluminium
	AOTLED5/W/CCT	LED	48W - Cool White/Warm White - Matt White
	AOTLED2X5/W/CCT	LED	84W - Cool White/Warm White - Matt White

Options	/M3	Self-Test Emergency
	/DD	Digital Dimming (DD1/DD2/DD3/DD4)
	/MWS	Integral Microwave Sensor

Accessory	AOTLED/90B	90° Corner Connector
-----------	------------	----------------------

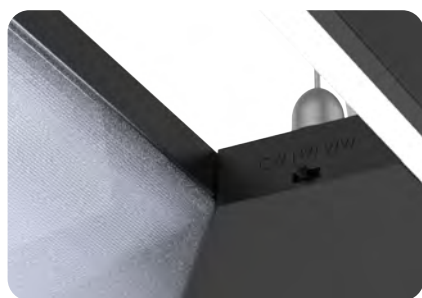
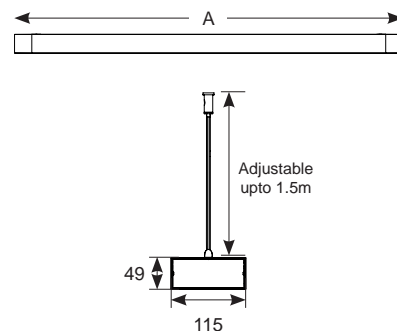


# Millau LED CCT Suspended Linear

Supplied c/w Integral Driver and Suspension Kit



- Architectural suspended linear for commercial applications
- Black powder coated die-cast aluminium construction provides a modern and sleek appearance
- Selectable CCT between 3000K, 4000K and 6000K output
- Internal mirrored reflector and opal diffuser provide optimum distribution and light output
- 48W Comparable to 2 x 28W T5
- 56W exceeds performance of 2 x 35W T5
- Supplied with 1.5 metre suspension kit including ceiling rose
- LED lifespan L70 50,000 hours
- Non-dimmable



Integrated switch for choice between Warm White, Cool White and Daylight



Hollow design provides ultra-modern appearance

## LED Information

Total (Watts)	38W	56W
Lumens Delivered		
Cool White	3475lm	4419lm
Warm White	3408lm	4290lm
Daylight	3492lm	4394lm
Lm/W		
Cool White	91lm	79lm
Warm White	90lm	77lm
Daylight	92lm	77lm
CRI	Ra 80	
CCT	4000K 3000K 6000K	
Input	230V	
Hertz	50Hz	
Operating Temp	-20°C to 45°C	

Code	Lamp	Description	A
AMILLED4	LED	38W - 3000K/4000K/6000K	1222
AMILLED5	LED	56W - 3000K/4000K/6000K	1622



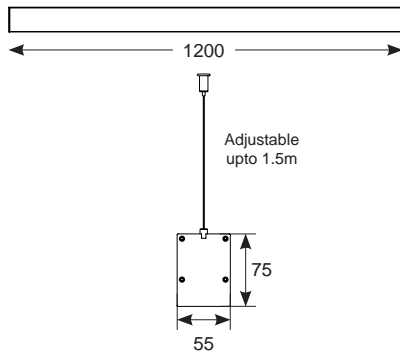
# Vasco LED CCT Bi-directional Suspended Linear

Supplied c/w Integral Driver and Suspension Kit



463

- Suspended linear for commercial applications
- Aluminium extruded construction with integral driver
- Supplied bi-directional light output as standard with 70% upward light and 30% downward light ratio (directional only option can be selected if required)
- 50W exceeds performance of 2x28W T5
- 60W exceeds performance of 2x35W T5
- Opal diffuser provides optimal light uniformity
- Selectable CCT between 3000K, 4000K and 6000K output
- Pre-wired with 1.5 metre cable
- Adjustable suspension points c/w suspension kit
- LED lifespan L90 36,000 hours



AVASLED



AVASLED/B



Linkable connector for continuous mounting

## LED Information

Total (Watts)	50W	60W
Lumens Delivered		
Warm White	4798lm	5308lm
Cool White	5283lm	6405lm
Daylight	4908lm	6075lm
Lm/W		
Warm White	96lm	88lm
Cool White	106lm	107lm
Daylight	98lm	101lm
CRI	Ra 80	
CCT	4000K	
	3000K	
	6000K	
Input	230V	
Hertz	50Hz	
Operating Temp	-20°C to 45°C	

Code	Lamp	Description
AVASLED	LED	50W - Warm White/Cool white/Daylight - Aluminium
AVASLED/B	LED	50W - Warm White/Cool white/Daylight - Black
AVASLED5	LED	60W - Warm White/Cool white/Daylight - Aluminium
AVASLED5/B	LED	60W - Warm White/Cool white/Daylight - Black

Accessory	AVASLED/LC	Continuous Linking Connector
-----------	------------	------------------------------

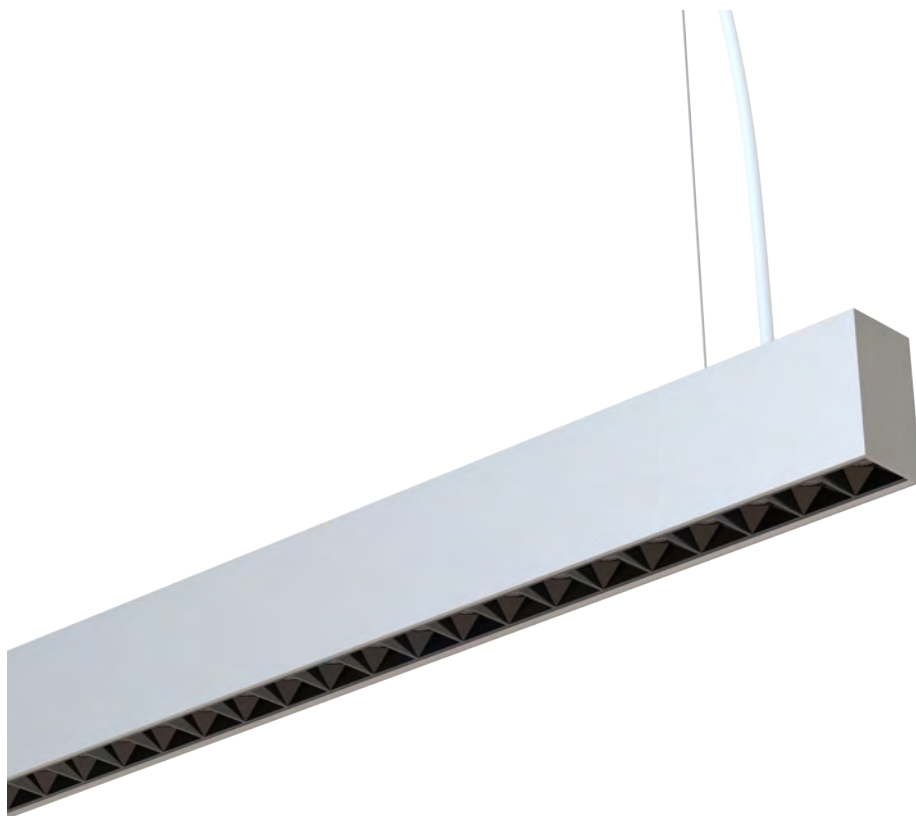


Warrington: +44 (0) 1942 433333  
Belfast: +44 (0) 2890 773750

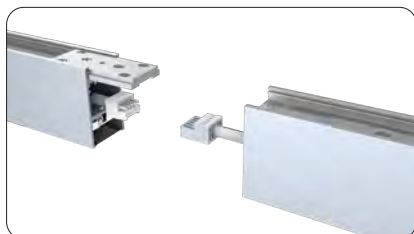
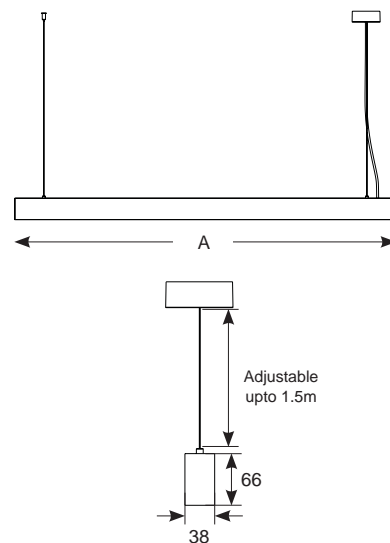


# Sidu LED Pendant

Supplied c/w Integral Driver and Suspension Kit



- Aluminium bi-directional suspended pendant with polycarbonate diffuser
- Suitable for office, retail and commercial applications
- Suitable for individual or continuous suspension (link bracket included)
- Slim profile available in Aluminium (RAL9006)
- 49W exceeds performance of 2x28W T5
- 60W exceeds performance of 2x49W T5
- Supplied c/w 1.5m adjustable suspension kit as standard
- Bi-directional light output split equally
- Black polycarbonate micro reflector design helps achieve UGR<6 (unified glare rating) compliant luminaire ideal for most interior lighting applications
- LED lifespan L70 50,000 hours
- 1-10V dimmable as standard



Easy connection for continuous applications



Supplied c/w 1.5m suspension kit

## LED Information

Total (Watts)	49W
	60W
Lumens Delivered	
49W	5209lm
60W	6762lm
Lm/W	
49W	106lm
60W	113lm
CRI	Ra 80
CCT	4000K
Input	100/240V
Hertz	50/60Hz
Operating Temp	-20°C to 45°C

Code	Lamp	Description	A
ASIDLED/CW	LED	49W - Cool White	1175
ASIDLED5/CW	LED	60W - Cool White	1493

# Eaves LED Recessed Linear

Supplied c/w Remote Driver

- Architectural aluminium LED recessed linear
- Black polycarbonate micro reflector low glare design
- Suitable for office, retail and commercial applications
- Sturdy spring clips provide tight and lasting position once installed
- Smart controls and dimmable options available
- LED lifespan  
L80 81,000 hours



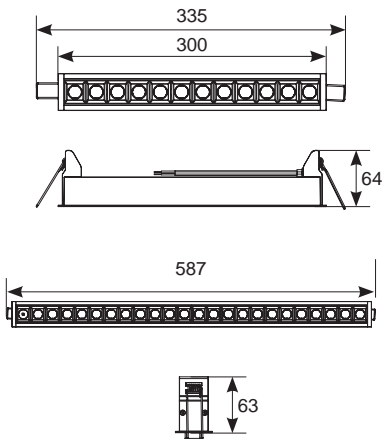
465



AEVLED300/WB/CW



AEVLED600/WB/CW



Black polycarbonate micro reflector design reduces glare

## LED Information

Total (Watts)	10W	15W
Lumens Delivered		
Cool White	954lm	1429lm
Warm White	944lm	1402lm
Lm/W		
Cool White	95lm	95lm
Warm White	94lm	93lm
Beam Angle	58°	
CRI	Ra 90	
CCT	3000K 4000K	
Input	220-240V	
Hertz	50/60Hz	
Operating Temp	-25°C to 40°C	

Code	Lamp	Description
<b>AEVLED300/WB/CW</b>	LED	10W - Cool White - 300mm
<b>AEVLED300/WB/WW</b>	LED	10W - Warm White - 300mm
<b>AEVLED600/WB/CW</b>	LED	15W - Cool White - 600mm
<b>AEVLED600/WB/WW</b>	LED	15W - Warm White - 600mm
<b>Option</b>	<b>/OCTO</b>	OCTO Smart Control
	<b>/DD</b>	Digital Dimming (DD1/DD2/DD3/DD4)



Warrington: +44 (0) 1942 433333  
Belfast: +44 (0) 2890 773750





**Project - Lakes College**  
Cumbria, UK

# Gemini LED Linear

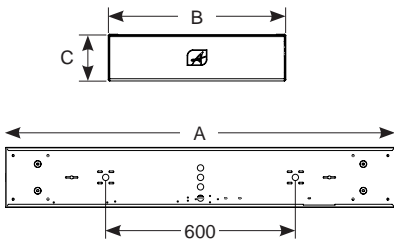
Supplied c/w Integral Driver



467

- High specification fully enclosed linear luminaire
- Microprism diffuser for enhanced photometric performance
- Robust steel construction
- Suitable for surface and suspension
- Ideal for most commercial and educational applications
- LED lifespan L70 65,000 hours

Powered by  
**TRIDONIC**  
▼ enlightening your ideas



## LED Information

Total (Watts)	40W 54W
Lumens Delivered	
40W	4448lm
54W	5291lm
Lm/W	
40W	108lm
54W	98lm
CRI	Ra 80
CCT	4000K
Input	230V
Hertz	50/60Hz
Operating Temp	-20°C to 50°C

Code	Lamp	Description	A	B	C
AGELED2X4	LED	40W	1230	190	55
AGELED2X5	LED	54W	1510	190	55

Option	/M3	Emergency
	/DD	Digital Dimming (DD1/DD2/DD3/DD4)

Accessory	ASK1	Suspension Kit 1.3m
-----------	------	---------------------



Warrington: +44 (0) 1942 433333  
Belfast: +44 (0) 2890 773750



Push fit loop-in, loop-out terminals provides a fast fit installation

Steel powder coated base for enhanced durability

Powered by  
**TRIDONIC**  
▼ enlightening your ideas

High performance LED array

Matt aluminium reflector for optimum glare control

High specification PC diffuser offering excellent transmission and uniformity



# Crescent LED Surface Linear

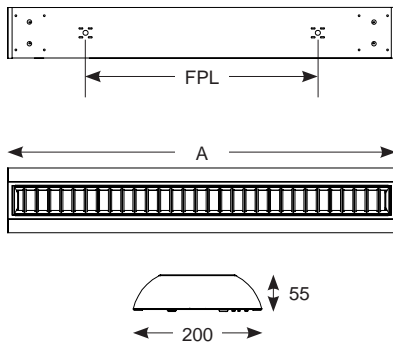
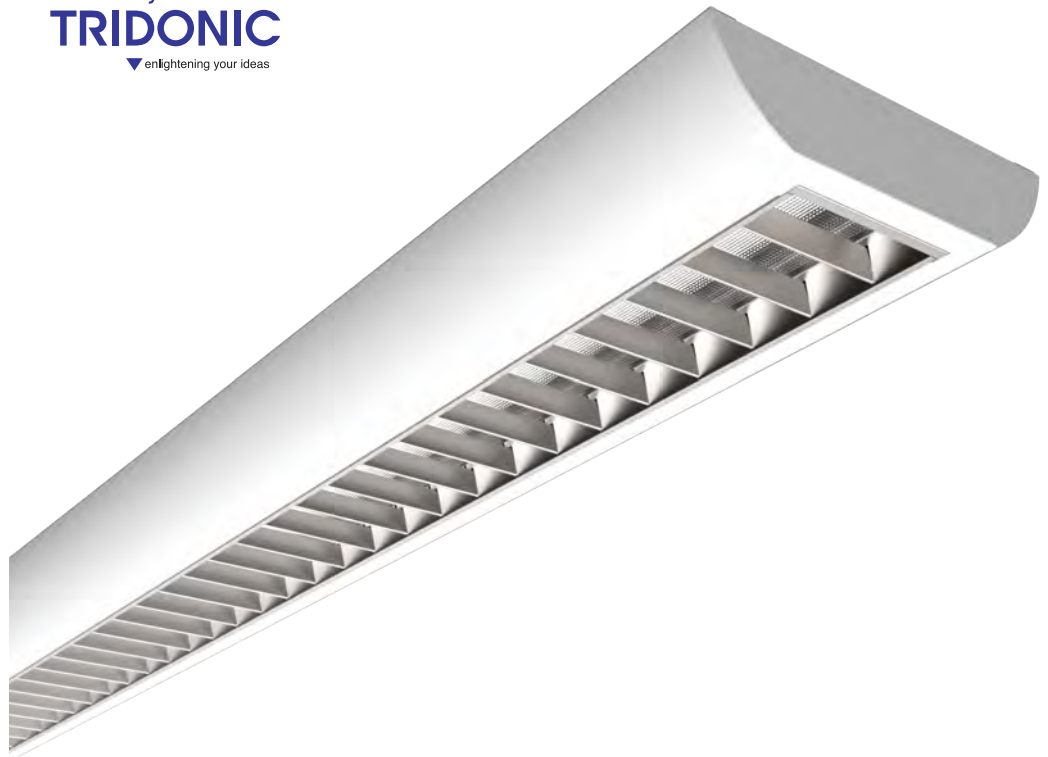
Supplied c/w Integral Driver



469

- High specification fully enclosed linear luminaire
- Steel powder coated body for enhanced durability
- Polycarbonate diffuser and polished louvre for excellent photometric performance
- Suitable for surface mounting and suspension
- 42W exceeds performance of 2x35W T5
- 51W exceeds performance of 2x49W T5
- Ideal for most commercial and educational applications
- LED lifespan L70 54,000 hours

Powered by  
**TRIDONIC**  
▼ enlightening your ideas



## LED Information

Total (Watts)	42W
	51W
Lumens Delivered	
2X4	4497lm
2X5	5266lm
Lm/W	
2X4	107lm
2X5	103lm
CRI	Ra 80
CCT	4000K
Input	220V-240V
Hertz	50Hz
Operating Temp	-20°C to 50°C

Code	Lamp	Description	A	FPL
<b>ACRESLED2X4</b>	LED	42W - Cool White	1200	600
<b>ACRESLED2X5</b>	LED	51W - Cool White	1500	900

Option	/M3	Emergency
	/SM3	Self-test Emergency
	/DM3	DALI Emergency
	/DD	Digital Dimming (DD1/DD2/DD3/DD4)

Accessory	ASK1	Suspension Kit 1.3m
-----------	------	---------------------



Warrington: +44 (0) 1942 433333  
Belfast: +44 (0) 2890 773750



# Airbeam LED Batten

Supplied c/w Integral Driver

470



- High performance LED batten for multi-purpose applications
- Up to 56% energy saving compared to T8 fluorescent
- Powered by Philips and Tridonic drivers
- Steel body construction with powder coat finish
- Polycarbonate reeded diffuser and end caps
- Instant light output with unlimited switching
- Self-test emergency as standard
- CorridorFUNCTION for dimmable microwave sensor models
- LED lifespan L70 56,000 hours



Push Release End Cap



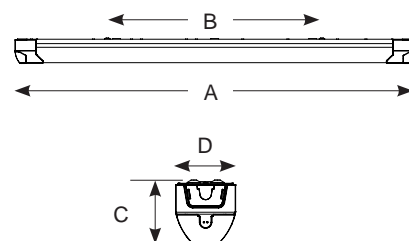
20mm Conduit Entry Facility



End Cap Fixing Option



Ceiling Mounting Continuous Fixings



Standard	Code	Lamp	Description	A	B	C	D
	ABLED4	LED	1 x 25W	1220	600	77	76
	ABLED5	LED	1 x 34W	1525	600	77	76
	ABLED6	LED	1 x 37W	1820	600	77	76
	ABLED2X4	LED	1 x 48W	1220	600	77	76
	ABLED2X5	LED	1 x 55W	1525	600	77	76
	ABLED2X6	LED	1 x 70W	1820	600	77	76

## Options

/M3	Self-Test Emergency
/OCTO	OCTO Smart Control
/DD	Digital Dimming (DD1/DD2/DD3/DD4 - ABLED2X6 Not Available)
/MWS	Integral Microwave Sensor

## LED Information

Total (Watts)	25W	48W
	34W	55W
	37W	70W
Lumens Delivered	2778lm	5517lm
	3608lm	6407lm
	4189lm	7910lm
Lm/W	116lm	106lm
	109lm	105lm
	100lm	94lm
CRI	Ra 80	
CCT	4000K	
Input	230V	
Hertz	50Hz	
Operating Temp	0°C to 25°C	



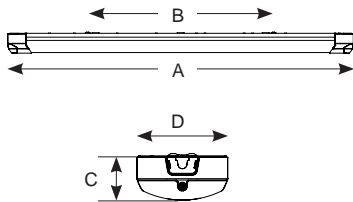
# Proline LED Surface Linear

Supplied c/w Integral Driver



471

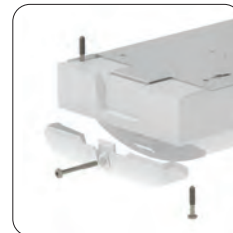
- Modern contemporary fully enclosed high performance surface luminaire
- Up to 56% energy savings compared to T8 fluorescent
- Powered by Philips and Tridonic drivers
- Steel powder coated body with reeded opal polycarbonate diffuser and retained end caps
- Low glare and uniform light distribution
- Ideal for most commercial and educational applications
- Self-test emergency as standard
- CorridorFUNCTION for dimmable microwave sensor options
- LED lifespan L70 56,000 hours



Push Release End Cap



20mm Conduit Entry Facility



End Cap Fixing Option



Ceiling Mounting Continuous Fixings

## LED Information

Total (Watts)	25W	49W
	33W	55W
	36W	70W
Lumens Delivered	2496lm	5097lm
	3440lm	6090lm
	4316lm	8029lm
Lm/W	100lm	98lm
	104lm	100lm
	114lm	101lm
CRI	Ra 80	
CCT	4000K	
Input	230V	
Hertz	50Hz	
Operating Temp	0°C to 25°C	

	Code	Lamp	Description	A	B	C	D
Standard	APRLED4	LED	1 x 25W	1220	600	73	148
	APRLED5	LED	1 x 33W	1525	600	73	148
	APRLED6	LED	1 x 36W	1820	600	73	148
	APRLED2X4	LED	1 x 49W	1220	600	73	148
	APRLED2X5	LED	1 x 55W	1525	600	73	148
	APRLED2X6	LED	1 x 70W	1820	600	73	148

Options	/M3	Self-Test Emergency
	/OCTO	OCTO Smart Control
	/DD	Digital Dimming (DD1/DD2/DD3/DD4 - APRLED2X6 Not Available)
	/MWS	Integral Microwave Sensor



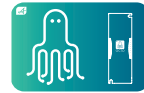
Warrington: +44 (0) 1942 433333  
Belfast: +44 (0) 2890 773750





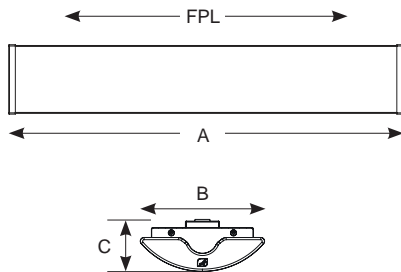
# Oxford LED Surface Linear

Supplied c/w Integral Driver



473

- Modern fully enclosed surface luminaire with curved low profile appearance
- This is a widely used style of fitting within the educational sector
- Steel body with polycarbonate diffuser and plastic end caps
- 23W exceeds performance of 1x35W T5
- 34W exceeds performance of 1x49W T5
- 38W exceeds performance of 2x28W T5
- 60W exceeds performance of 2x49W T5
- LED lifespan L70 54,000 hours
- Dimmable options



Powered by  
**TRIDONIC**  
▼ enlightening your ideas



## LED Information

Total (Watts)	23W	34W
	38W	60W
Lumens Delivered	2944lm	3668lm
	4248lm	6552lm
Lm/W	128lm	108lm
	111lm	109lm
CRI	Ra 80	
CCT	4000K	
Input	230V	
Hertz	50/60Hz	
Operating Temp	-20°C to 50°C	

Code	Lamp	Description	A	B	C	FPL
<b>AOXLED4</b>	LED	23W - Cool White	1190	165	70	1084
<b>AOXLED5</b>	LED	34W - Cool White	1470	165	70	1384
<b>AOXLED2X4</b>	LED	38W - Cool White	1190	165	70	1084
<b>AOXLED2X5</b>	LED	60W - Cool White	1470	165	70	1364

Options	/M3	Emergency
	/OCTO	OCTO Smart Control
	/DD	Digital Dimming (DD1/DD2/DD3/DD4)



Warrington: +44 (0) 1942 433333  
Belfast: +44 (0) 2890 773750

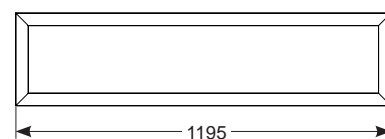
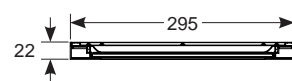


# Brooklyn LED Bi-Directional Panel

Supplied c/w Integral Driver and Suspension Kit



- High performance bi-directional suspendable LED panel
- Integral LED driver provides a unique aesthetically pleasing design
- White anodised aluminium frame
- Supplied c/w 1.2m suspension kit as standard
- LED lifespan L70 50,000 hours
- 1-10V dimmable as standard



## LED Information

Total (Watts)	36W
Lumens Delivered	3788lm
Lm/W	105lm
CRI	Ra 80
CCT	4000K
Input	230V
Hertz	50/60Hz
Operating Temp	-20°C to 40°C

Code	Lamp	Description
ABROLED	LED	36W - Cool White



# Spektrum LED CCT Panel Frame

Supplied c/w Integral Driver



475

- High performance minimalist LED panel frame for commercial and architectural applications
- Hollow illuminated frame allows installation of standard ceiling panel to sit inside frame and level with grid
- Integral switch allows the installer a choice of 3000K, 4000K and 6500K colour temperature options
- LED lifespan  
L70 50,000 hours



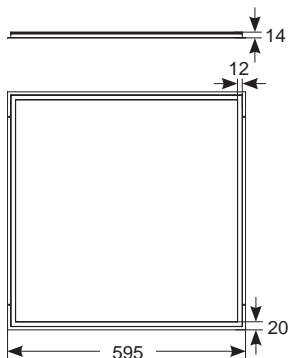
Cool White



Daylight



Warm White



## LED Information

Total (Watts)	28W
Lumens Delivered	
Cool White	2995lm
Warm White	2877lm
Daylight	3000lm
Lm/W	
Cool White	111lm
Warm White	103lm
Daylight	103lm
CRI	Ra 80
CCT	3000K 4000K 6500K
Input	230V
Hertz	50/60Hz
Operating Temp	-20°C to 45°C

Code	Lamp	Description
<b>ASPELED/60/CCT</b>	LED	28W - Warm White/ Cool white / Daylight

<b>Options</b>	<b>/M3</b>	Emergency
	<b>/SM3</b>	Self-Test Emergency
	<b>/DM3</b>	Dali Emergency
	<b>/OCTO</b>	OCTO Smart Control
	<b>/DD</b>	Digital Dimming (DD1/DD2/DD3/DD4)



Warrington: +44 (0) 1942 433333  
Belfast: +44 (0) 2890 773750



# Infinite LED Recessed Panel

Supplied c/w Remote Driver



Powered by  
**TRIDONIC**  
▼ enlightening your ideas



Surface Mounting Frame for LED Panel  
(shown with Panel Pod installed)

- High performance LED flat panel which outperforms 3x14W T5
  - UGR<19 (unified glare rating) compliant luminaire ideal for most interior lighting applications
  - Maintenance free instant light output and unlimited switching
  - Panel Pod Self-Test emergency option
  - Panel Pod sensor option
  - TPb as standard
  - LED lifespan L70 40,000 hours
  - Dimmable options
- \* 7 Year Warranty applies to fittings registered online (5 Year Warranty for unregistered fittings)

Dimensions (mm)  
L595 x W595 x H10

See p430 for more information  
on Panel Pod Emergency and  
Panel Pod Sensor

Code	Lamp	Description
<b>AIRMLD/CW</b>	LED	35W - Cool White

<b>Emergency</b>	<b>AIRMLD/POD/3NM/ST</b>	LED	5W - Panel Pod Self-Test Emergency
<b>Sensor</b>	<b>AIRMLD/POD/MWS</b>		1W - Microwave Sensor

<b>Option</b>	<b>/OCTO</b>	OCTO Smart Control
	<b>/DD</b>	Digital Dimming (DD1/DD2/DD3/DD4)

<b>Accessories</b>	<b>AIRMLD/SMF</b>	Surface Mounting Frame (L600mm x W600mm x D75mm)
	<b>AIRMLD/PRK</b>	Plasterboard Recessing Kit (Cut-out 615x615mm)
	<b>AIRMLD/SK</b>	2 Metre Suspension Kit
	<b>AEQTCC/600</b>	Equaliser 600x600 Temperature Regulator

## LED Information

Total (Watts)	35W
Lumens Delivered	3300lm
Lm/W	94lm
CRI	Ra 80
CCT	4750K
Input	230V
Hertz	50Hz
Operating Temp	-10°C to 40°C



\* Subject to ceiling/installation types  
\* Not applicable to surface/suspended applications

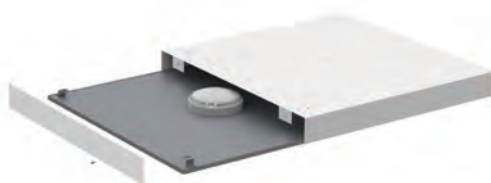


# Endurance LED TPa UGR<19 Recessed Panel

Supplied c/w Remote Driver



Surface Mounting Frame for  
LED Panel  
(shown with Panel Pod  
Emergency installed)



- High performance maintenance free LED panel
- TPa as standard
- UGR<19 (unified glare rating) compliant luminaire assisting to eliminate glare for visual comfort
- panel outperforms 3x14W T5
- Cool white, warm white and daylight options
- White anodised aluminium frame for visual compatibility with ceiling grid
- Low glare and even light distribution for multiple applications
- Panel Pod Self-Test emergency option
- Panel Pod sensor option
- Surface mounting frame option
- Powered by Philips
- LED lifespan L90 52,000 hours

**AERMLED3/60 Dimensions (mm)**  
L595 x W595 x H10

See p430 for more information  
on Panel Pod Emergency and  
Panel Pod Sensor

Code	Lamp	Description
<b>AERMLED3/60/CW</b>	LED	29W - Cool White
<b>AERMLED3/60/WW</b>	LED	29W - Warm White
<b>AERMLED3/60/DL</b>	LED	29W - Daylight

<b>High Output</b>	<b>AERMLED3/HO/60/CW</b>	LED	29W - Cool White
	<b>AERMLED3/HO/60/WW</b>	LED	29W - Warm White
	<b>AERMLED3/HO/60/DL</b>	LED	29W - Daylight

<b>Emergency</b>	<b>AIRMLED/POD/3NM/ST</b>	LED	5W - Panel Pod Self-Test Emergency
<b>Sensor</b>	<b>AIRMLED/POD/MWS</b>		1W - Microwave Sensor

<b>Options</b>	<b>/OCTO</b>	OCTO Smart Control
	<b>/DD</b>	Digital Dimming (DD1/DD3)*

\* DD2/DD4 available with alternative control gear

<b>Accessories</b>	<b>AIRMLED/SMF</b>	Surface Mounting Frame (L600mm x W600mm x D75mm)
	<b>AIRMLED/PRK</b>	Plasterboard Recessing Kit (Cut-out 615x615mm)
	<b>AERMLED/SK</b>	2 Metre Suspension Kit
	<b>AEQTCC/600</b>	Equaliser 600x600 Temperature Regulator

## LED Information

Total (Watts)	29W	HO
<b>Lumens Delivered</b>		
Cool White	2953lm	3742lm
Warm White	2873lm	3610lm
Daylight	2938lm	3725lm
Lm/W Cool White	102lm	129lm
Lm/W Warm White	99lm	125lm
Lm/W Daylight	101lm	128lm
<b>CRI</b>	Ra 80	
CCT Cool White	4000K	
CCT Warm White	3000K	
CCT Daylight	6000K	
<b>Input</b>	230V	
<b>Hertz</b>	50Hz	
<b>Operating Temp</b>	-20°C to 40°C	



\* Subject to ceiling/installation types  
\* Not applicable to surface/suspended applications



## Panel Pod Compatible

Quickly and easily convert standard panel to either Self-Test Emergency or Microwave Sensor



LED board placement creates a more uniform distribution of light with no dark spots or shadowing.  
LED lifespan L70 30,000 hours

Quick release POD cover for quick and easy installation of the Ansell self-test emergency Panel Pod

Philips CertaDrive LED driver

0.2mm steel back plate providing support and rigidity

Panel POD aperture. Panel POD compatible for all emergency and microwave sensor requirements and self-test as standard

0.188mm High efficient regulator sheet maximizing performance efficiency

5mm Pearl Wool supporting all panel layers into position

2mm MS LGP guarantee to maintain stipulated CCT throughout the lifetime of the product

Latest high efficiency SMD LED array

TP(a) fire retardant diffuser as standard suitable for all applications

Reinforced steel powder coated frame for added rigidity

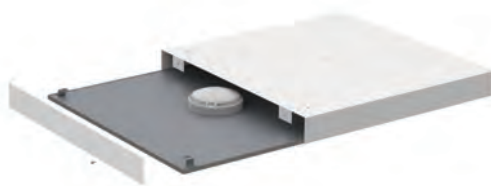


# Endurance LED TPa Recessed Panel

Supplied c/w Remote Driver



Surface Mounting Frame for  
LED Panel  
(shown with Panel Pod  
Emergency installed)



- High performance maintenance free LED panel
- TPa as standard
- 30W panel outperforms 3x14W T5
- Low glare and even light distribution for multiple applications
- Cool white, warm white and daylight options
- White anodised aluminium frame for visual compatibility with ceiling grid
- Panel Pod Self-Test emergency option
- Panel Pod sensor option
- Surface mounting frame option
- Powered by Philips
- LED lifespan L90 52,000 hours

**AERMLED/260 Dimensions (mm)**  
L595 x W595 x H10

See p430 for more information  
on Panel Pod Emergency and  
Panel Pod Sensor

Code	Lamp	Description
<b>AERMLED2/60/CW</b>	LED	29W - Cool White
<b>AERMLED2/60/WW</b>	LED	29W - Warm White
<b>AERMLED2/60/DL</b>	LED	29W - Daylight

<b>Emergency</b>	<b>AIRMLED/POD/3NM/ST</b>	LED	5W - Panel Pod Self-Test Emergency
<b>Sensor</b>	<b>AIRMLED/POD/MWS</b>		1W - Microwave Sensor

<b>Options</b>	<b>/OCTO</b>	OCTO Smart Control
	<b>/DD</b>	Digital Dimming (DD1/DD3)*

\* DD2/DD4 available with alternative control gear

<b>Accessory</b>	<b>AIRMLED/SMF</b>	Surface Mounting Frame (L600mm x W600mm x D75mm)
	<b>AIRMLED/PRK</b>	Plasterboard Recessing Kit (Cut-out 615x615mm)
	<b>AERMLED/SK</b>	2 Metre Suspension Kit
	<b>AEQTCC/600</b>	Equaliser 600x600 Temperature Regulator

## LED Information

Total (Watts)	29W
Lumens Delivered	
Cool White	3092lm
Warm White	2891lm
Daylight	3046lm
Lm/W Cool White	107lm
Lm/W Warm White	100lm
Lm/W Daylight	105lm
CRI	Ra 80
CCT Cool White	4000K
CCT Warm White	3000K
CCT Daylight	6000K
Input	230V
Hertz	50Hz
Operating Temp	-20°C to 40°C



\* Subject to ceiling/installation types

\* Not applicable to surface/suspended applications



# Endurance LED TPa Recessed Panel

Supplied c/w Remote Driver



- High performance maintenance free LED panel
- TPa as standard
- 60W panel outperforms 3x28W T5
- Cool white, warm white and daylight options
- White anodised aluminium frame for visual compatibility with ceiling grid
- Low glare and even light distribution for multiple applications
- Panel Pod Self-Test emergency option
- Panel Pod sensor option
- Powered by Philips
- LED lifespan L90 52,000 hours

**AERMLED/120 Dimensions (mm)**  
L1195 x W595 x H10

See p430 for more information on Panel Pod Emergency and Panel Pod Sensor



Code	Lamp	Description
AERMLED2/120/CW	LED	58W - Cool White
AERMLED2/120/WW	LED	58W - Warm White
AERMLED2/120/DL	LED	58W - Daylight

<b>Emergency</b>	AIRMLED/POD/3NM/ST	LED	5W - Panel Pod Self-Test Emergency
<b>Sensor</b>	AIRMLED/POD/MWS		1W - Microwave Sensor

<b>Option</b>	/DD	Digital Dimming (DD1/DD2/DD3)
---------------	-----	-------------------------------

<b>Accessory</b>	AERMLED/120/SMF	1200x600 Surface Mounting Frame
------------------	-----------------	---------------------------------

## LED Information

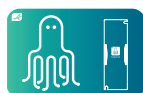
Total (Watts)	58W
Lumens Delivered	
Cool White	5780lm
Warm White	5363lm
Daylight	5646lm
Lm/W Cool White	100lm
Lm/W Warm White	93lm
Lm/W Daylight	97lm
CRI	Ra 80
CCT Cool White	4000K
CCT Warm White	3000K
CCT Daylight	6500K
Input	230V
Hertz	50/60Hz
Operating Temp	-20°C to 40°C



\* Subject to ceiling/installation types  
\* Not applicable to surface/suspended applications

# Endurance LED TPa Recessed Panel

Supplied c/w Remote Driver



483

- High performance maintenance free LED panel
- TPa as standard
- Cool white, warm white and daylight options
- White anodised aluminium frame for visual compatibility with ceiling grid
- Low glare and even light distribution for multiple applications
- Panel Pod Self-Test emergency option
- Panel Pod sensor option
- Powered by Philips
- LED lifespan  
L90 52,000 hours



**AERMLED2/30 Dimensions (mm)**  
L1195 x W295 x H10

See p430 for more information  
on Panel Pod Emergency and  
Panel Pod Sensor

## LED Information

Total (Watts)	29W
Lumens Delivered	
Cool White	3234lm
Warm White	3187lm
Daylight	3211lm
Lm/W Cool White	112lm
Lm/W Warm White	110lm
Lm/W Daylight	111lm
CRI	Ra 80
CCT Cool White	4000K
CCT Warm White	3000K
CCT Daylight	6500K
Input	230V
Hertz	50/60Hz
Operating Temp	-20°C to 40°C

Code	Lamp	Description
<b>AERMLED2/30/CW</b>	LED	29W - Cool White
<b>AERMLED2/30/WW</b>	LED	29W - Warm White
<b>AERMLED2/30/DL</b>	LED	29W - Daylight

<b>Emergency</b>	<b>AIRMLED/POD/3NM/ST</b>	LED	5W - Panel Pod Self-Test Emergency
<b>Sensor</b>	<b>AIRMLED/POD/MWS</b>		1W - Microwave Sensor

<b>Options</b>	<b>/OCTO</b>	OCTO Smart Control
	<b>/DD</b>	Digital Dimming (DD1/DD2/DD3)

<b>Accessory</b>	<b>AERMLED/SK</b>	2 Metre Suspension Kit
	<b>AERMLED/30/SMF</b>	1200x300 Surface Mounting Frame



- \* Subject to ceiling/installation types
- \* Not applicable to surface/suspended applications

**Warrington:** +44 (0) 1942 433333  
**Belfast:** +44 (0) 2890 773750



# Panel Pod Emergency and Panel Pod Sensor

For Infinite and Endurance LED Panels



AIRMLD/POD/3NM/ST

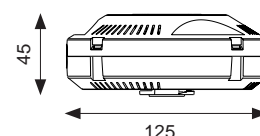


AIRMLD/POD/MWS



## Emergency Panel Pod

- Integral Self-Test emergency pod to convert any new Infinite LED and Endurance LED panel to emergency, instantly
- LiFePO4 Lithium battery provides improved energy consumption, product reliability and lifetime
- Simple, quick twist and lock fixing
- Supplied with a pre-wired 1 Metre cable for ease of installation
- Tri-colour LED shows green for healthy running condition, red/flashing for fault conditions and white for emergency operation
- **UK Patent No. GB2522285**
- **European Patent No. 15165652.7**
- **Irish Patent No. 2015/0128**
- **EC Registered Design No 002712232-0001**

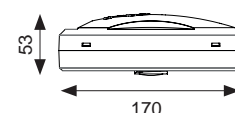


## LED Information

Total (Watts)	5W
Lumens Delivered	189lm
Beam Angle	120°
CCT	6500K
Input	230V
Operating Temp	0°C to 45°C

## Sensor Panel Pod

- Converts Ansell Infinite and Endurance LED panels to microwave sensor operation
- Provides detection area of 360° with a detection angle of 120°
- Simple twist and lock connection
- Pre-wired 300mm 4-core flex for easy installation
- Fast and efficient installation
- Adjustable time delay and distance
- **UK Patent Applied For No. 1504205.4**
- **EC Registered Design No 002712232-0001**



Code	Lamp	Description
------	------	-------------

<b>Emergency</b>	AIRMLD/POD/3NM/ST	LED 5W - Panel Pod Self-Test Emergency
------------------	-------------------	--

<b>Sensor</b>	AIRMLD/POD/MWS	1W - Microwave Sensor
---------------	----------------	-----------------------

# Panel Pod



485



## **Pre-wired 1 metre cable \***

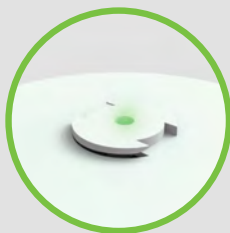
*As standard ensuring a fast and easy installation*

*\* 300mm for Panel Pod Sensor*



## **Twist and Lock Connection**

*Provides a secure connection and easy installation*



## **Self-Test as standard \***

*Provides instant indication to status of emergency module and lamp, negating the need for manual monthly and annual checks*

*\* Panel Pod Emergency only*



## **Detection Area and Angle**

*Provides detection area of 360° with a detection angle of 120°*



**\*\* Only one Panel Pod can be attached to the back of individual panels\*\***

# Defender LED IP65 Clean Air Recessed Modular

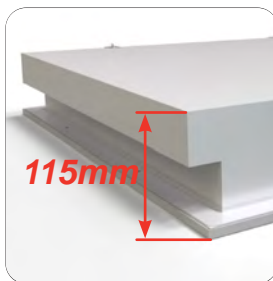
Supplied c/w Integral Driver



Powered by  
**TRIDONIC**  
▼ enlightening your ideas

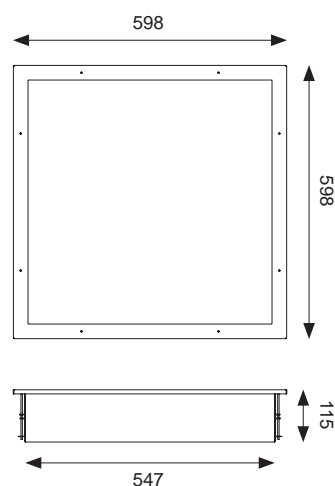


Easy Fix style bracket



115mm depth

- Sealed LED luminaire to endure arduous environments
- High quality steel housing with welded frame and secured by Easy Fix style brackets
- Frame fitted with TP(a) rated diffuser providing excellent diffusion and outstanding light transmission
- Suitable for areas such as laboratories, hospitals, clean rooms, kitchens and showers
- LED lifespan L70 56,000 hours



## LED Information

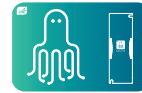
Total (Watts)	49W
Lumens Delivered	4660lm
Lm/W	95lm
CRI	Ra 80
CCT	4000K
Input	230V
Hertz	50/60Hz
Operating Temp	-20°C to 50°C

Code	Lamp	Description
<b>ADELED</b>	LED	49W - Cool White
<b>Options</b>	<b>/M3</b>	Emergency
	<b>/DD</b>	Digital Dimming (DD1/DD2/DD3/DD4)



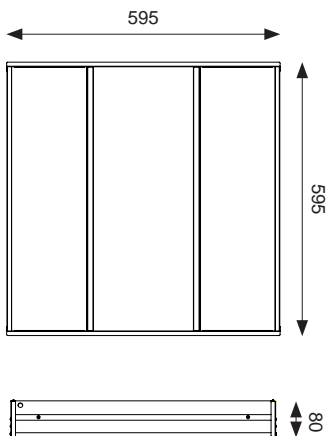
# Lota LED CCT Troffer

Supplied c/w Integral Driver



487

- High performance indirect recessed luminaire
- UGR<19 (unified glare rating) compliant luminaire ideal for most interior lighting applications
- Ideal for office or commercial applications
- Selectable CCT between 3000K, 4000K and 6000K output
- Exceeds performance of 2x40W PL-L
- Powder coated steel construction
- LED lifespan L70 30,000 hours
- TP(a) as Standard



## LED Information

Total (Watts)	29W
Lumens Delivered	
Warm White	3051lm
Cool White	3195lm
Daylight	3178lm
Lm/W	
Warm White	105lm
Cool White	110lm
Daylight	110lm
CRI	Ra 80
CCT	
Warm White	3000K
Cool White	4000K
Daylight	6000K
Input	230V
Hertz	50/60Hz
Operating Temp	-10°C to 40°C



Cool White



Daylight



Warm White

Code	Lamp	Description
<b>ALOTLED</b>	LED	29W - Cool White/ Warm White/ Daylight
<b>Options</b>	<b>/M3</b>	Emergency
	<b>/SM3</b>	Self-Test Emergency
	<b>/DM3</b>	DALI Emergency
	<b>/OCTO</b>	OCTO Smart Control
	<b>/DD</b>	Digital Dimming (DD1/DD2/DD3/DD4)

Warrington: +44 (0) 1942 433333  
Belfast: +44 (0) 2890 773750



# Gridline Duo LED Indirect Recessed Modular

Supplied c/w Integral Driver, Louvre and Opal Diffuser



Visiluxe Diffuser Fitted

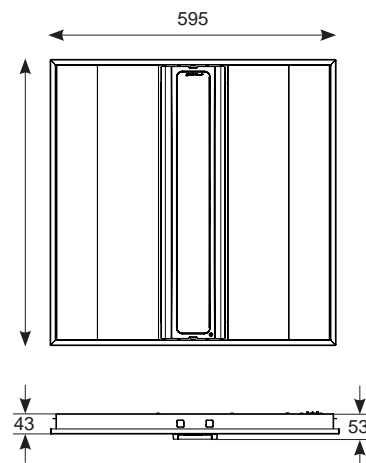
**GRIDLINE™**  
DUO

Powered by  
**TRIDONIC**  
▼ enlightening your ideas



Chrome Trim Louvre Fitted

- Shallow 2-In-1 LED direct / indirect recessed luminaire with outstanding efficiency characteristics
- Each fitting supplied with chrome central louvre and high transmission diffuser options (high gloss black or white central louvres available as optional accessories)
- Up to 70% saving compared to 2x55W PL-L
- Quick access termination point for rapid installation
- Instant light output and unlimited switching
- Self-test emergency as standard
- Small unobtrusive microwave sensor option
- CorridorFUNCTION for dimmable microwave sensor options
- LED lifespan L70 56,000 hours



Code	Lamp	Description
<b>AGDLED</b>	LED	37W - Cool White

Options		
<b>/M3</b>		Self-Test Emergency
<b>/DD</b>		Digital Dimming (DD1/DD2/DD3/DD4)
<b>/MWS</b>		Integral Microwave Sensor

Accessories		
<b>AGDLED/WLA</b>		High Gloss White Louvre Trim
<b>AGDLED/BLA</b>		High Gloss Black Louvre Trim
<b>AIRMLD/PRK</b>		Plasterboard Recessing Kit (Cut-out 608x608mm)

## LED Information

Total (Watts)	37W
Lumens Delivered	3300lm
Lm/W	89lm
CRI	Ra 80
CCT	4000K
Input	230V
Hertz	50Hz
Operating Temp	0°C to 25°C



# Venus LED Indirect

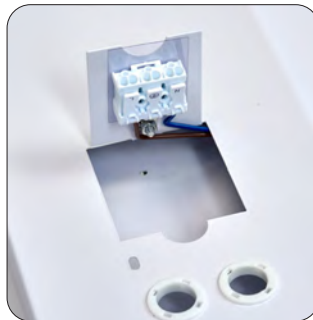
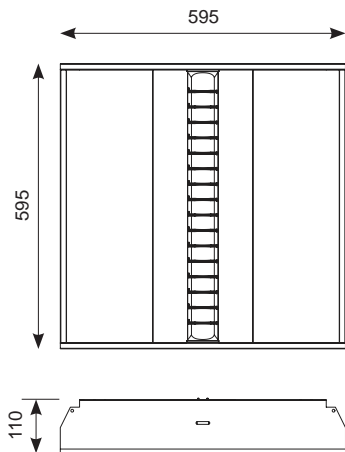
Supplied c/w Integral Driver



489

- High performance indirect recessed luminaire with outstanding efficiency characteristics
- Comparable performance to 3x14W T5
- Instant light output and unlimited switching
- Quick access termination point for ease of installation
- Powder coated welded steel box construction for lay in applications only
- LED lifespan  
L70 54,000 hours

Powered by  
**TRIDONIC**  
▼ enlightening your ideas



**Quick Access  
Termination Point  
(Push Fit Terminals)**



**Mirrored Internal Reflector  
For Enhanced Distribution**

## LED Information

Total (Watts)	40W
Lumens Delivered	3926lm
Lm/W	98lm
CRI	Ra 80
CCT	4000K
Input	230V
Hertz	50/60Hz
Operating Temp	-20°C to 50°C



Code	Lamp	Description
<b>AVENLED</b>	LED	40W - Cool White

Options	/M3	Emergency
	/OCTO	OCTO Smart Control
	/DD	Digital Dimming (DD1/DD2/DD3/DD4)

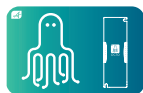
Warrington: +44 (0) 1942 433333  
Belfast: +44 (0) 2890 773750



# Neptune LED CCT Troffer

Supplied c/w Integral Driver

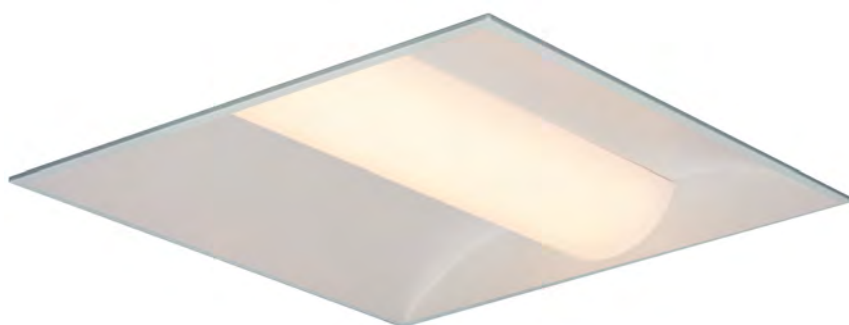
490



Cool White



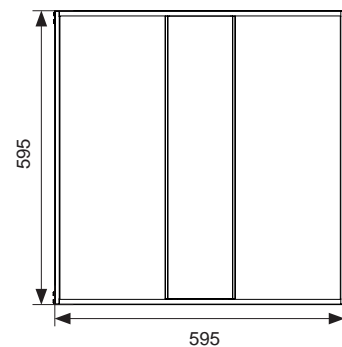
Daylight



Warm White

Powered by  
**TRIDONIC**  
▼enlightening your ideas

- High performance indirect recessed luminaire
- Selectable CCT between 3000K, 4000K and 6000K output
- Ideal for office or commercial applications
- Exceeds performance of 2 x 40W PL-L
- Powder coated steel construction
- LED lifespan L70 50,000 hours



## LED Information

Total (Watts)	36W
Lumens Delivered	
Warm White	3564lm
Cool White	3796lm
Daylight	3767lm
Lm/W	
Warm White	99lm
Cool White	108lm
Daylight	102lm
CRI	Ra 80
CCT	
Warm White	3000K
Cool White	4000K
Daylight	6000K
Input	230V
Hertz	50/60Hz
Operating Temp	-20°C to 45°C

Code	Lamp	Description
ANEPLED	LED	36W - Warm White/Cool White/Daylight

Options	/M3	Emergency
	/OCTO	OCTO Smart Control
	/DD	Digital Dimming (DD1/DD2/DD3/DD4)



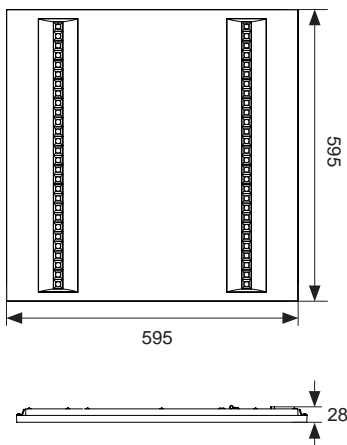
# Pluto LED

Supplied c/w Integral Driver



491

- Stylish LED recessed modular
- UGR>14 (unified glare rating) compliant Ideal for office, school, retail and commercial applications
- Exceeds performance of 2 x 55W PL-L
- LED lifespan L70 50,000 hours



Powered by  
**TRIDONIC**  
▼ enlightening your ideas

## LED Information

Total (Watts)	35W
Lumens Delivered	3591lm
Lm/W	112lm
CRI	Ra 80
CCT	4000K
Input	230V
Hertz	50/60Hz
Operating Temp	-20°C to 45°C



Code	Lamp	Description
<b>APLUED</b>	LED	35W - Cool White
<b>Options</b>	<b>/M3</b>	Emergency
	<b>/OCTO</b>	OCTO Smart Control
	<b>/DD</b>	Digital Dimming (DD1/DD2/DD3/DD4)

Warrington: +44 (0) 1942 433333  
Belfast: +44 (0) 2890 773750

