



Pick up the
Pace!

Ansell
LIGHTING

Pace LED TP(a) Backlit recessed panel



5 Year
Warranty

Applications

Pace LED TP(a) UGR<19 Backlit recessed panel APACLED1/60



Office applications

Open plan, executive offices, meeting rooms, conference rooms and training rooms



Educational buildings applications

Classrooms, lecture halls, art rooms, staff room/ offices and conference/meeting rooms



Commercial (retail) applications

Point of sale area



Healthcare premises applications

Staff offices and staff rooms

Pace LED TP(a) CCT Backlit recessed panel APACLED2/60/CCT



Office applications

Corridors, archives/document store and canteens



Educational buildings applications

Circulations areas, corridors, stock rooms and canteens



Commercial (retail) applications

Sales areas and corridors



Healthcare premises applications

Waiting rooms



Contact our Sales Team for more
information: **01942 433333**



Or visit our website to see the Pace
LED products: **www.anselluk.com**

Ideal for installation in to education and commercial settings such as classrooms, offices, lecture halls, corridors canteens and meeting rooms.



Contact our Sales Team for more
information: **01942 433333**



Or visit our website to see the Pace
LED products: **www.anselluk.com**

Product Features

Flicker free LED driver

Self-Test emergency Panel POD and
Microwave sensor POD compatible

Lightweight rigid steel body. Suitable for
installation in T15 and T25 grid ceilings; along
with additional suspended and surface mount
options.

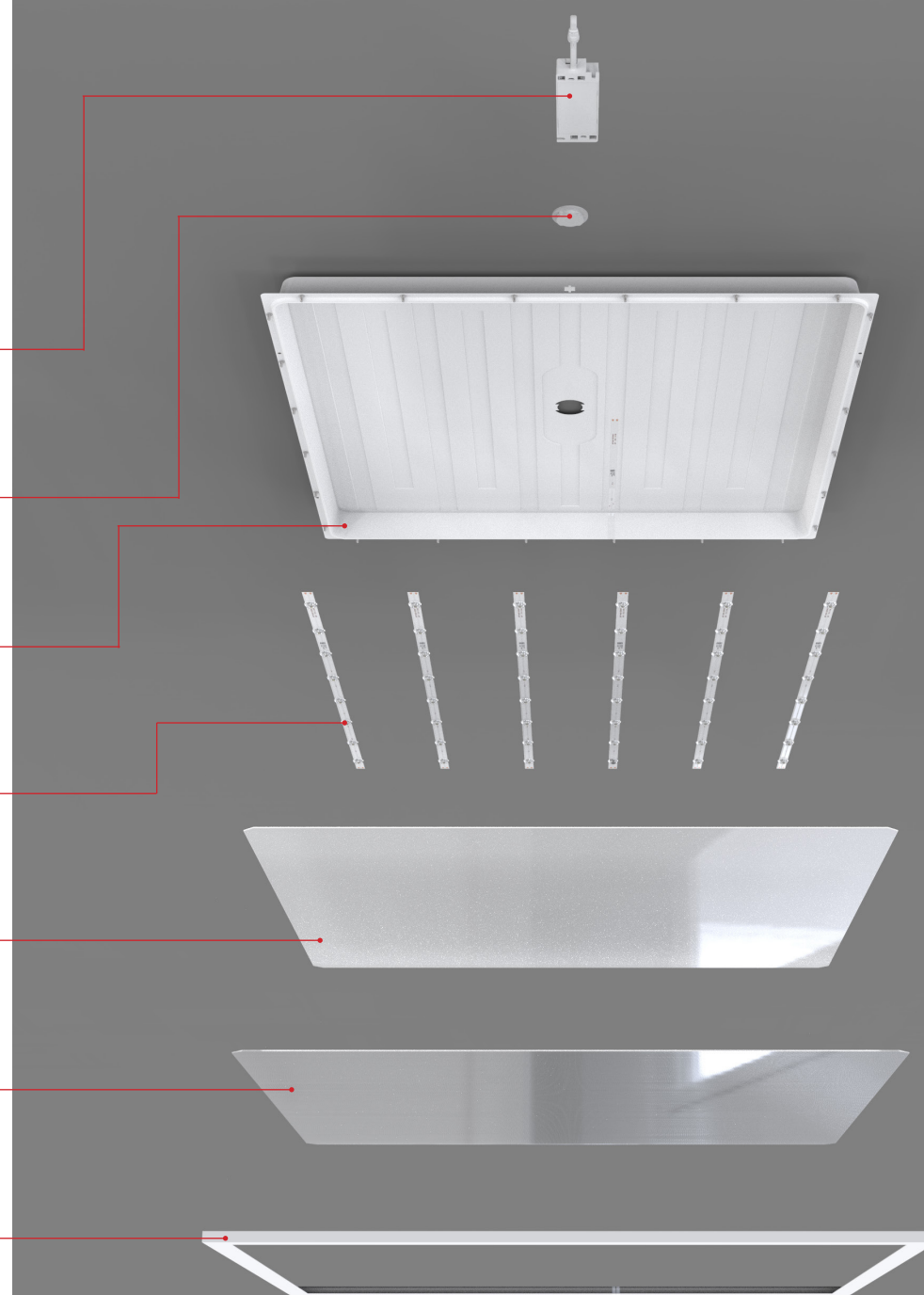
High specification, high efficacy, CRI >80
LED chips with individual LED optical lens
technology.

UGR<19 opal polycarbonate diffuser offers
optimum light uniformity, diffusion and glare
control; aiding visual comfort

Tp(a) fire retardant, low loss diffuser for
unrestricted use in applications.

White powder coated steel RAL 9003 frame

IP44 front face ingress protection

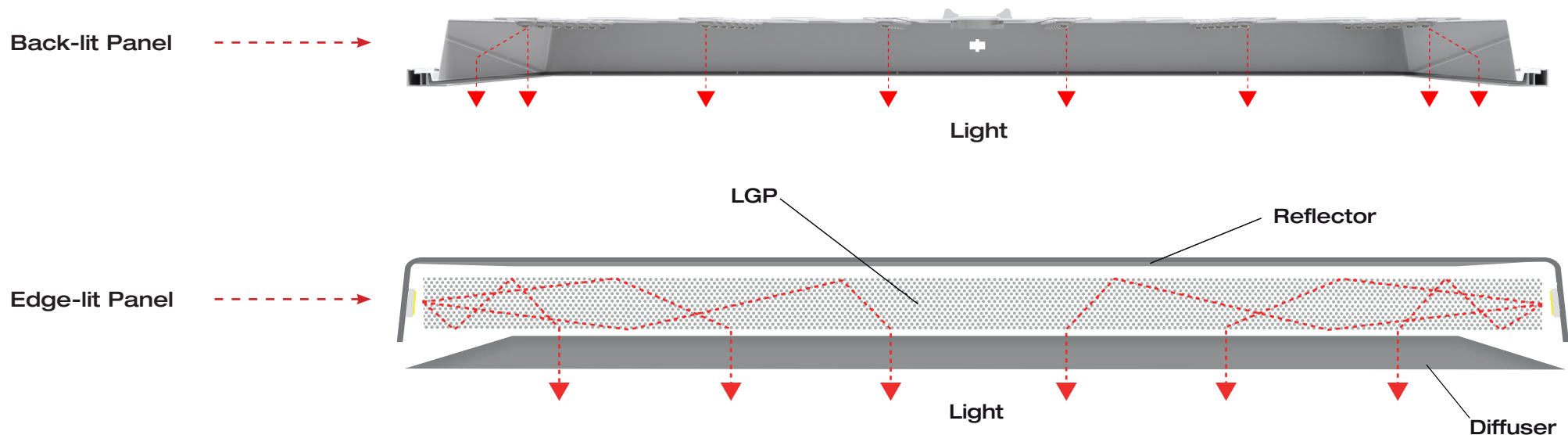


Contact our Sales Team for more
information: **01942 433333**



Or visit our website to see the Pace
LED products: **www.anselluk.com**

Back-lit v Edge-lit



The back-lit Pace panel boasts high lumen output and brightness whilst using the same power compared with an edge lit panel. With heat dissipation, the life of the panel LED chip is prolonged, making it ideal for installation into settings with heavy use such as schools, colleges and workplaces.

LGP

No LGP (Light Guide Panel) is used in the Pace Back-Lit panel. The LGP is used within all LGP product and can be made from a number of materials. Many in the market have used inferior materials such as PS (polystyrene) and due to the proximity of the LGP against the LED's the heat and the UV of the LED's will result in the LGP discolouring over time. This discolouration will result in a "yellowing" of the LGP and will result in a shift in the output of the product and the provided CCT. But with the Pace there is no LGP and therefore no risk of discolouration and CCT over time.

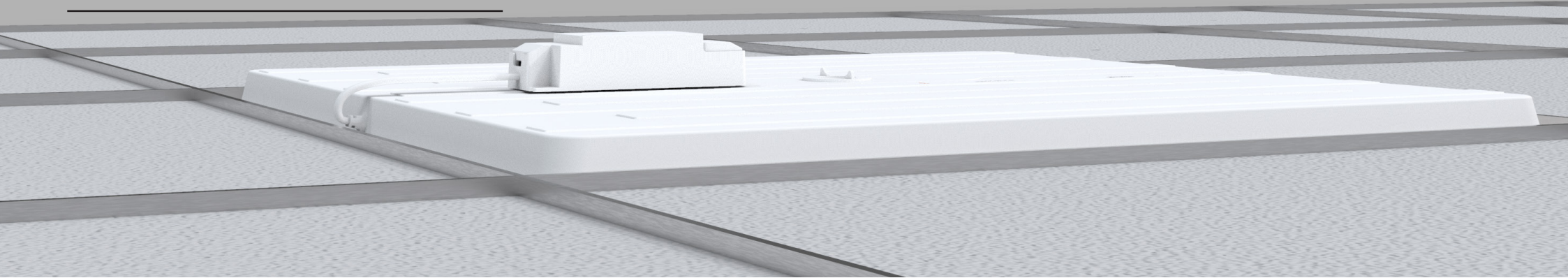


Contact our Sales Team for more information: **01942 433333**

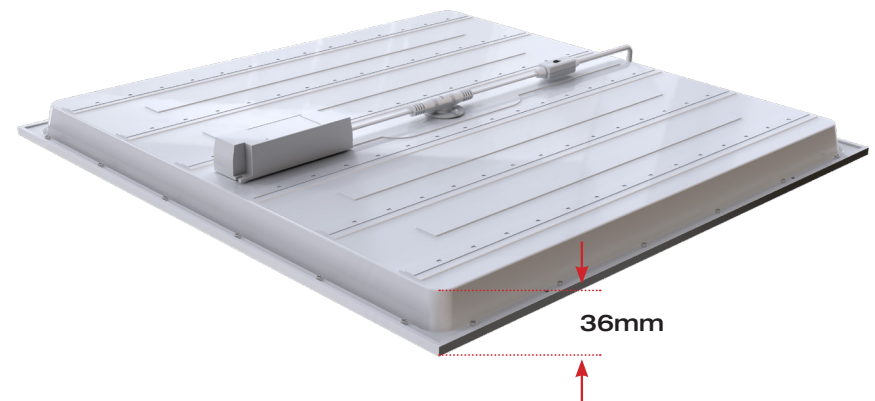


Or visit our website to see the Pace LED products: **www.anselluk.com**

Shallow Ceiling Voids



At 36mm deep, the Pace Panel is one of the slimmest backlit panels available on the market currently, making it perfect for installation into ceiling recesses which lack space for a deeper fixture. Ideal for installation in to ceiling grids in offices, educational settings and also retail as well as being used as a replacement fitting for traditional fixtures already installed. The Pace can accommodate a range of installation variations including being surface mounted, recessed or suspended, depending on your preference and ceiling construction.



Contact our Sales Team for more information: **01942 433333**

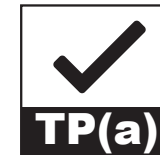
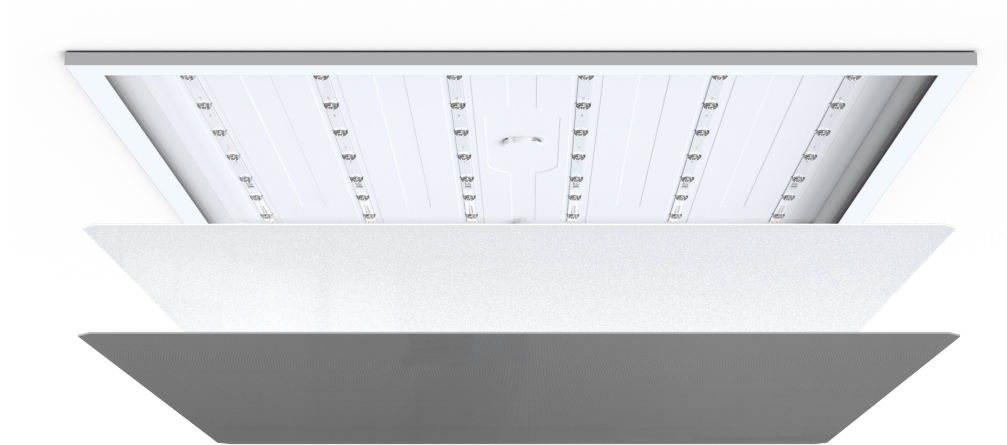


Or visit our website to see the Pace LED products: **www.anselluk.com**

UGR<19 Rated Diffuser



TP(a) Rated Diffuser



The Pace has a Unified Glare Ratio of lower than 19 which means it provides a visually comforting experience for those working for long periods or using computer screens for extended periods. This low glare rating reduces the problem caused by reflections of traditional light fittings against highly-reflective screens, making it ideal for installation into offices and commercial buildings, schools, colleges and also retail settings. (APACLED1/60 Only)

The Pace panel uses a TP(a) rated thermoplastic diffusers, which, in the event of a fire, is one of the best materials to slow the spread of flames across the ceiling. It has a slower burn time compared with other diffuser materials used in panel luminaires and meets Part B fire safety in Building Regulations. There are no restrictions in using TP(a) rated panels, including the Pace, and can be used in all areas of a building without limitations.

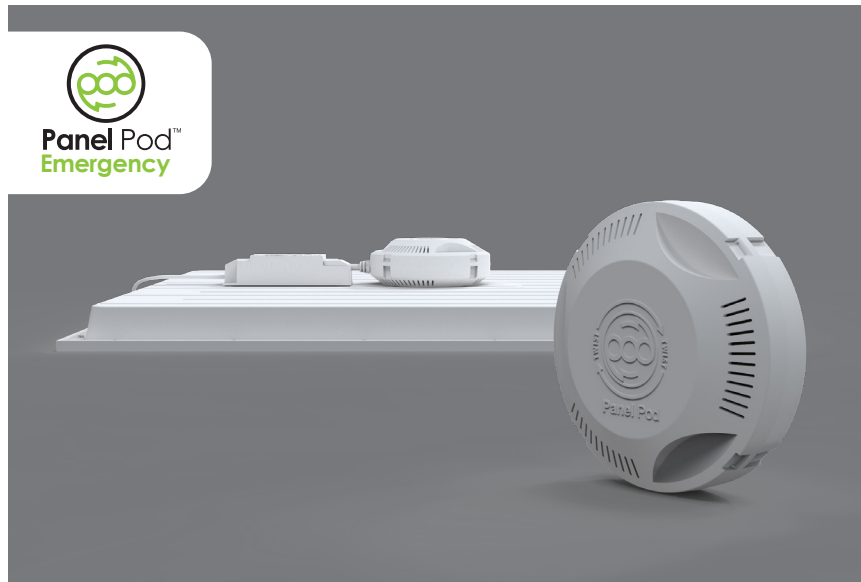


Contact our Sales Team for more
information: **01942 433333**



Or visit our website to see the Pace
LED products: **www.anselluk.com**

Panel Pod Compatible



You can easily convert the Pace into an emergency fixture using the Panel Pod Emergency. This gives you the consistency of using the same product throughout your building, whilst also adhering to building and safety regulations. The Panel Pod provides instant indication to the status of the emergency module and lamp which negates the need for manual monthly and annual checks.



The Panel Pod Sensor converts the panel to microwave sensor operation, providing a detection area of 360° and a detection angle of 120°, ensuring the panel is only used when needed and in turn reducing energy costs.



Contact our Sales Team for more information: **01942 433333**



Or visit our website to see the Pace LED products: **www.anselluk.com**

OCTO Option



OCTO

CASAMBI

Compatible with Ansell's OCTO smart lighting solution, you can wirelessly control the Pace through the mobile app or smart accessories. OCTO uses Bluetooth mesh, perfect for commercial environments, and doesn't require a hub making commissioning easy and simply to set up. OCTO negates the need for switches as it has full app-based control using your own phone, reducing the risk of cross contamination between users in the same space. With full control of the panel, users can tailor the desk lighting to their own preference and needs. Easily highlight which desks can be used in a social distanced office, by turning on luminaires above selected workspaces. Using a PIR sensor in conjunction with the Pace allows for daylight harvesting and energy saving as well as presence and absence detection, reducing energy costs.

Dimmable Option

Available in cool white, warm white, daylight and also CCT dimmable, the Pace is adaptable to the setting it is being installed in. The CCT option allows installers to use the same panel throughout a building but have the ability to change the colour temperature according to each room or space requirements. The dimming capability via DALI, SwitchDIM, DSI and 1-10V options allows further adjustment of the light to suit your needs.



Contact our Sales Team for more
information: **01942 433333**



Or visit our website to see the Pace
LED products: **www.anselluk.com**

Datasheet



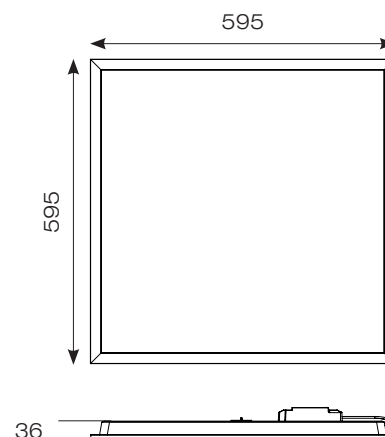
- High performance maintenance free LED panel
- Suitable for installation in offices, educational buildings, retail and healthcare premises
- Slimline design allows for installation into shallow ceiling voids
- TPa as standard
- UGR<19 (unified glare rating) compliant luminaire assisting to eliminate glare for visual comfort (APACLED1/60 Only)
- CCT selectable option also available (APACLED2/60/CCT)
- Cool white, warm white and daylight options
- Panel Pod Self-Test emergency option
- Panel Pod sensor option
- Powered by Philips*
- LED lifespan L80 B10 54,000 hours
- Dimmable/OCTO options available

*only applicable to APACLED1 variants

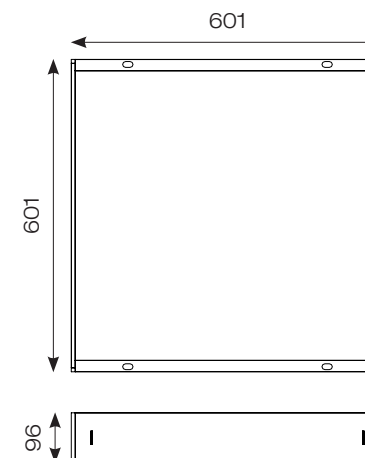
LED Information

CRI	Ra 80
CCT Cool White	4000K
CCT Warm White	3000K
CCT Daylight	6500K
Input	220/240V
Hertz	50/60Hz
Operating Temp	-10°C to 45°C

Line Drawing

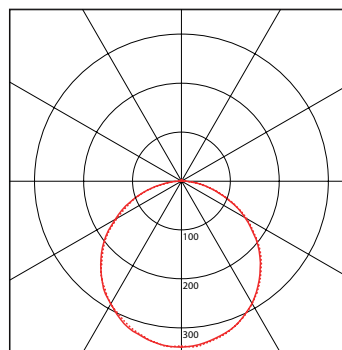


APACLED1/60
APACLED2/60



AERMLD/60/SMF

Photometric Guide



Warm White

Wattage:	29W
Lumen delivered:	3100lm
Lm/W	111lm

Cool White

Wattage:	29W
Lumen delivered:	3300lm
Lm/W	118lm

Daylight

Wattage:	29W
Lumen delivered:	3250lm
Lm/W	116lm



Contact our Sales Team for more information: **01942 433333**



Or visit our website to see the Pace LED products: **www.anselluk.com**

Ansell Electrical Products Ltd

*Unit 6B, Stonecross Industrial Park,
Yew Tree Way,
Warrington,
WA3 3JD*

+44 (0) 1942 433333

+44 (0) 1942 433433

saleswarrington@anselluk.com

Ansell (Sales & Distribution) Ltd

*Unit 2, M2 Business Park,
Duncrue Street,
Belfast,
BT3 9AQ*

+44 (0) 2890 773750

+44 (0) 2890 773783

sales@anselluk.com

***Ansell Lighting
Innovation and Design Office***

*Innovation and Design Office
Suite 1A, Littlemead Offices,
Tangmere Road,
Chichester,
West Sussex
PO20 2EU*

Ansell Lighting China

*Yu Ge Commercial Building
Cuiyi Road,
Dongguan City,
Guangdong Province,
Peoples Republic of China*



Contact our Sales Team for more
information: **01942 433333**



Or visit our website to see the Pace
LED products: **www.anselluk.com**