

NXDB MK III Product Overview

Robust ALL METAL TP&N Boards: 4, 6, 8, 12 and 18 Ways, *alternatively with Glazed Door.*

Boards can be mounted together, **vertically** or **horizontally** with or without **Meter kits**. Extension Boxes are available for use as Cable Spreader units, fitted with 35mm DIN rail to mount various components, alternatively with a 250A, 4 Pole Isolator to be used where 2 boards are combined.

Units are Powder Coated to RAL 7035 over pretreated Heavy Gauge Steel with welded corners.

A wide selection of laser pre cut cable entries which are easily removed without deforming the outer case.

A selection of PAN assemblies are available for mounting directly to Control Panels. 8, 12, and 18 ways.

The boards are available as individual units as shown on the following pages, alternatively Chint will assemble them to customer specification, fitting MCBs, RCBOs as detailed.



PLEASE NOTE:

Where Chint assemble boards to customer requirements be aware that weight may be an issue. Chint will take responsibility for shipping to a UK site address with the equipment mounted where appropriate to pallets and off loaded at the Kerbside. It is the client's responsibility to remove the equipment from the kerbside to a final installation point. We use 3rd party contractors for shipping, **it is crucial that firm arrangements are made to receive the goods.**

*Various weights are shown. Carriage is charged extra on NXDB Boards.

Adequate Main and Earth connections are provided, it is the installer's responsibility to ensure these are adequately tightened when the system is being commissioned.

Product Features

Chint 125A “SERIES 3” B Boards

Chint “Series 3” B Boards are manufactured from Sheet Steel to meet the requirements of **BS-EN 60439** with an **IP rating of IP3X**.

The main boards designed and manufactured in the UK are of pleasing appearance, finished in smooth powder coated pale grey paint to RAL 7035 over pre treated steel.

Available sizes are 4, 6, 8, 12 and 18 Ways, a 4 Pole 125A Incomer is included as standard.

- 4, 6, 8, 12 and 18 Way, boards made in the UK
- Accepts Chint 6KA and 10KA MCBs, 10KA RCBOs
- 4 Pole, 125A Incomer fitted as standard
- Locking Capability – Separately Padlockable Main Boards and Extension Boxes
- Can be mounted in either portrait or landscape format as Power & Lighting Boards



250A Mains Incomer Unit



Isolator can be locked off with up to 3 padlocks



Accessory: NXDB-Link



Chint NXDB MK III Distribution Boards are pre fitted with ½ turn coin operated fasteners to both the main boards and the cable spreader boxes.

Product Features

Chint NXDB MK III Showing Glazed Doors



Glazed Door Main Panel and plain front Cable Spreader Box.

Glazed Door Main Panel with a bottom fitted Extension Box for use either as an Extension Box or Metering Unit.

Easy Viewing, Neutral Colour

Chint NXDB Mk III TP&N Distribution Boards are readily available with all metal, or glazed doors, finished in a pleasing neutral colour so as not to look out of place in most Commercial, Industrial applications.

The Cable Spreader Boxes are supplied with a full length of 35mm DIN Rail to allow components such as contactors, MCBs and various other components to be easily mounted either side of the incoming cables, in effect build a mini Control Panel.

The Acrylic Glazing is held in place with high specification adhesive.



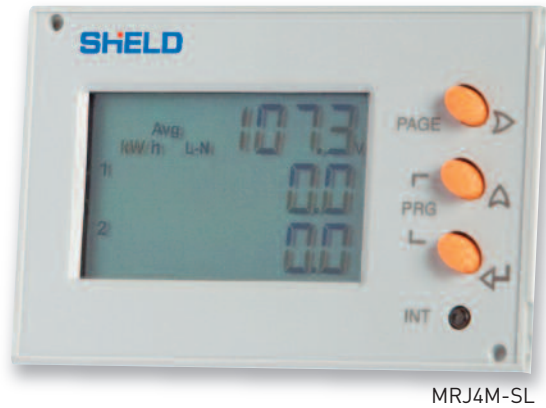
Wide range of Circular Conduit holes and square cut out for trunking, these are all laser pre cut so as to give easy access without damaging the Gland Plates.



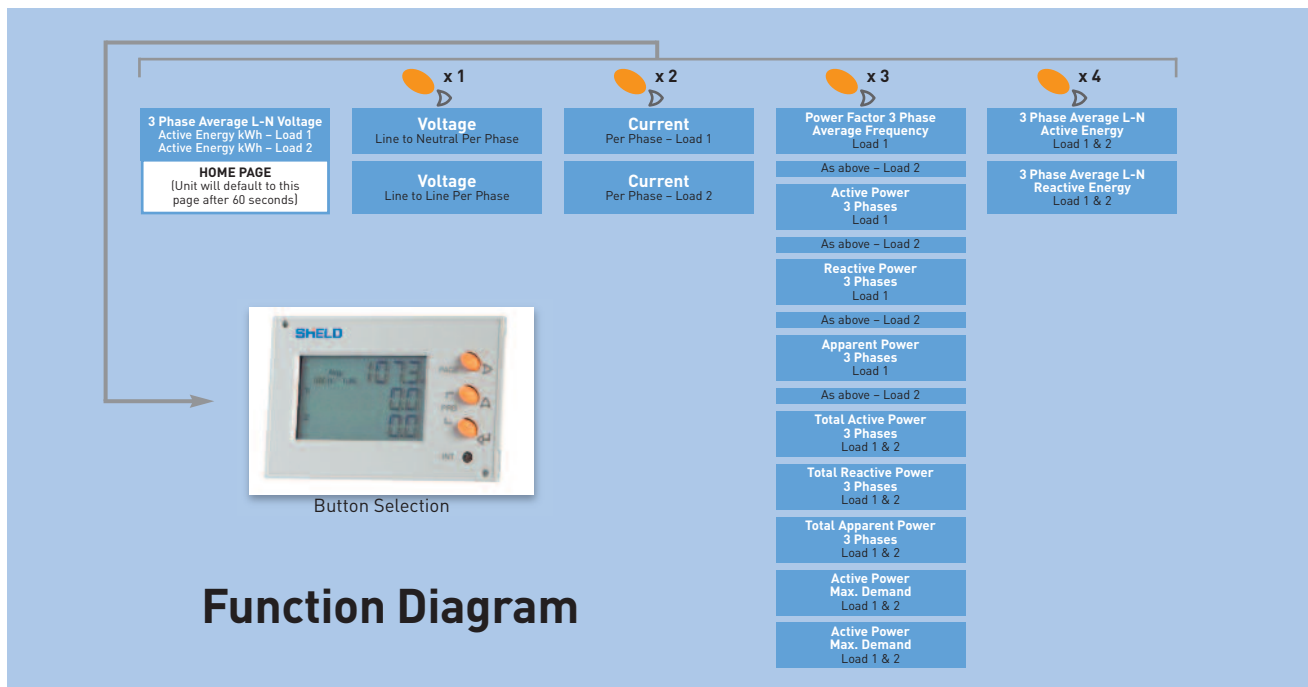
Metering

With Double CT Connection, DIN Rail Mounting and LCD Display

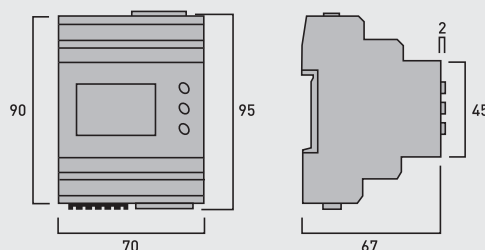
- Split Load, Dual CT Input Meter
- 4 Module DIN Rail mounting
- Single phase or 3 phase (4 wire) network balanced or unbalanced load
- Built-in dual energy pulse output, one for each load and RS485 MODBUS communication
- Wide range of measured parameters (see table below)
- High quality backlit LCD display
- 330mV current Transformer input
- Active energy class 1 (EN62053-21)
- Reactive energy class 2 (EN62053-23)
- THD up to 31st harmonic for voltage and current
- 3 phase: 140...460Vac measured voltage
- Single phase: 80...265Vac measured voltage
- Self supplied auxiliary
- Programmable CT ratio 5...10,000A per load
- Programmable VT ratio
- Frequency 45/65Hz
- Selectable CT phase correction allows reversal of L1 and L3
- Weight 200g



MRJ4M-SL



Power Meter Dimensions

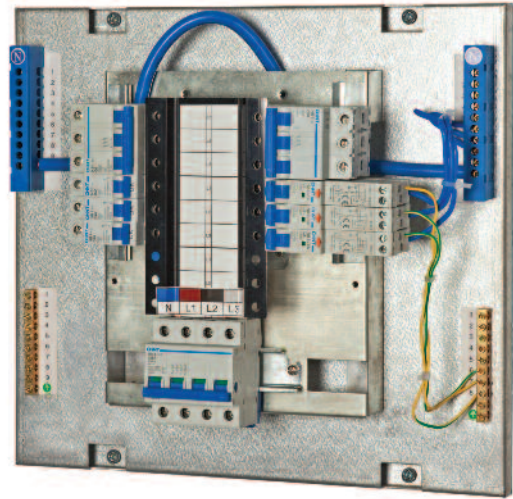


Please allow space above and below the meter for cable connections. Dimensions in mm.

PAN Assemblies

A new range of **Panel Mounting PAN Assemblies** suitable for the following MCB ranges is introduced **8, 12 and 18 ways**.

The PAN assemblies accept the Chint **ASTA approved** B, C or D Curve 6 or 10KA MCBs, 6A - 40A B or C Curve RCBOs, they are supplied as standard with a 125A, 4 Pole Incomer.



Part Numbers and Dimensions for NXDB TP&N Boards, PAN Assemblies & Accessories

DESCRIPTION	PART NO.	HEIGHT	WIDTH	DEPTH
3 PHASE TP&N BOARDS – ALL METAL				
4 Way	NXDB-4	600	500	155
6 Way	NXDB-6	700	500	155
8 Way	NXDB-8	735	500	155
12 Way	NXDB-12	850	500	155
18 Way	NXDB-18	1,000	500	155
3 PHASE TP&N BOARDS – GLAZED WINDOW				
4 Way	NXDB-4G	600	500	155
6 Way	NXDB-6G	700	500	155
8 Way	NXDB-8G	735	500	155
12 Way	NXDB-12G	850	500	155
18 Way	NXDB-18G	1,000	500	155
PANEL MOUNTING PAN ASSEMBLIES				
8 Way PAN Assembly	PA-08	555	428	120
12 Way PAN Assembly	PA-12	715	428	120
18 Way PAN Assembly	PA-18	950	428	120
ACCESSORIES				
Spreader Box	EX-1803/SB	400	500	155
250A, 4P Incomer Unit with Cable Shrouds	EX-4250	400	500	155
Single Meter Kit	MRJ4M-LS01	-	-	-
Dual Meter Kit, Enclosure, Incomer & Cables	MRJ4M-LS02	400	500	155
18mm Blanking Plates (2 pieces)	NXDB-BP	-	-	-
3 Phase – Single Phasing Link	NXDB-LINK	-	-	-
Padlock and Fixing Kit	NXDB.LOCK	-	-	-

Pre assembled Metered Power and Lighting Boards and Meter Kits are available to order, see pages 12, 13 and 14.