



IMO

**STARLINE
CATALOGUE
2017-18**

www.imopc.com

IMO Precision Controls Ltd
1000 North Circular Road
London NW2 7JP

Email: sales@imopc.com
Call: **020 8452 6444**

Jaguar Variable Speed AC Drives TRUE DC Solar Isolators iView Advanced HMI XGB Programmable Logic Controller i3 Intelligent Control Station FireRaptor Solar Panel Rapid Shutdown System Miniature Circuit Breakers iSmart Intelligent Relays Industrial Relays Residual Circuit Breakers Contactors Enclosed AC Isolators Thermal Overload Relays Motor Circuit Breakers DIN Rail Terminals Power Supplies Proximity Sensors Limit Switches Photoelectric Sensors Foot Switches Cam Switche Modular Heating & Lighting Contactors Plug-In Relays iStart Enclosed Starters Sockets For Power Relays Safety Limit Switches Signal Conditioning Push Buttons Distribution Boxes Pilot Lights Timers Temperature Controllers Enclosures Solar Connectors Rotary Knobs Jaguar Variable Speed AC Drives TRUE DC Solar Isolators iView Advanced HMI XGB Programmable Logic Controller i3 Intelligent Control Station FireRaptor Solar Panel Rapid Shutdown System Miniature Circuit Breakers iSmart Intelligent Relays Industrial Relays Residual Circuit Breakers Contactors Enclosed AC Isolators Thermal Overload Relays Motor Circuit Breakers DIN Rail Terminals Power Supplies Proximity Sensors

The Future In Control

IMO Precision Controls

Often copied, never equalled... since 1972

Founded in 1972, IMO has grown from its UK base to become a global manufacturer and supplier of industrial control and electronic components and systems. Our history is one of innovation. Whether it is the first ever BT Type 47 Approved relay or the first ever compact AC inverter for motor speed control, IMO has always been focused on breaking barriers. That philosophy extends to the company's service model with features such as advanced online customer ordering and visibility, integrated logistics and the industry's first global third party fulfilment agreement described by the trade press as "a deal ahead of its time".

Our quality assured manufacturing sites ensure IMO products continue to be recognized for quality and reliability. Backed by unique warranty periods of up to Five Years and in compliance with all relevant international standards and approvals, customers specifying IMO products can do so with the knowledge and security that they are making a no compromise selection.

We succeed through the success of our customers. Blue Chip manufacturers the world over rely on IMO to help them achieve higher levels of innovation, competitiveness and reliability. It is a philosophy that continues to deliver results and one which creates close and long lasting relationships with our customers world-wide.



IMO Online

The IMO website includes a customer portal for placing orders online and includes an Account Management area, along with all of your historical data. It even makes recommendations based upon your purchasing history. The site also features detailed product search, latest news stories and much more.

 www.imopc.com

Unrivalled service... professionally delivered

It isn't just the fact that we have over 15,000 product lines available, and next day delivery on stock items ordered online by 3.00pm that sets our service apart from the rest. Something that IMO has always excelled in is the level of personalised service we offer to all of our customers, and we believe it is this that truly sets us apart from the competition.

When you become a customer of IMO, you also become part of the family. Our highly trained customer service representatives are quick to learn your requirements, and concentrate on the one thing that we think brings you back to IMO each time, and that is ensuring your happiness through delivering the right products, at the right time, the right price and with a huge amount of care and attention that simply isn't available anywhere else.

Our team of technical specialists know our products inside out, and have years of experience in the field as well as specifically liaising with and helping customers resolve issues to ensure the best possible outcome for them.

Leading the way...

- Over 15,000 product lines available for next day delivery
- Worldwide Technical Support
- Amongst the best warranties in the industry
- Iconic IMO trade counter display stands
- Promotional materials *including product brochures, window stickers, counter mats, posters, product displays and case studies*



Seamlessly integrated...

IMO's custom built Pack'N'Track system integrates our logistics seamlessly to DHL, enabling later next day delivery cut-off times, and total tracking visibility from the moment a delivery note is printed.

The customised programme ensures that DHL just collect and deliver, and with over 50,000 square feet of warehousing packed with products at our European HQ in London, that kind of efficiency is needed to ensure our customers get their products on-time, every time.

Just another way that we are making the customer experience even better!

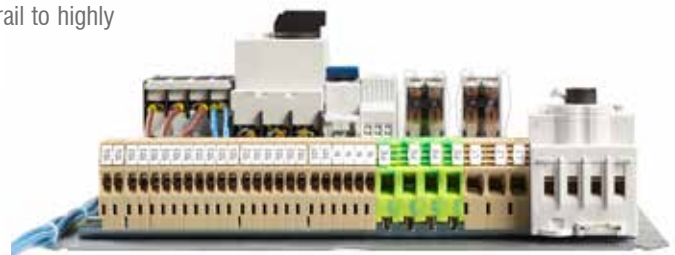
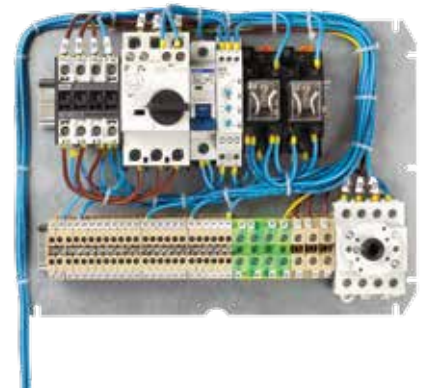


Custom solutions...

Satisfying an ever-growing trend in the market, the IMO Assembly Division provides bespoke solutions to customer requirements for components pre-assembled onto mounting rails, or into enclosures. We can offer totally customised solutions which can include many different control components, such as contactors, relays, timers, miniature circuit breakers etc. IMO can also offer a complete custom wiring solution from prepared cables and cable looms to crimpings, terminations and housings.

Customers can seriously benefit from outsourcing both pre-assembled components and prepared wiring. Benefits include a lower overall cost with reduced installation times, lower inventory expense with no tooling investment, and total peace of mind knowing that every assembled solution comes 100% pre-tested.

Whatever your requirement, from a simple, cable assembly or single rail to highly complex solutions, contact IMO to discuss your needs.



Same day dispatch...

IMO Precision Controls feel that in order to offer a class-leading service, we need to ensure that all orders are processed as quickly as possible. So if you place your order before 3.00pm, and it is a general stock item, your order will be dispatched the same day.

If your order is really urgent, it can be dispatched with next day delivery (available at an additional cost), ensuring you get your product in the fastest and most reliable method available.



Your Success Is Our Success...

Our customers' competitive challenges are of paramount importance to our own success so we work tirelessly to help our customers differentiate their product, improve their service offering and grow their market share. Our approach has allowed us to enjoy long-term relationships with some of the largest blue-chip companies in the world and to help tomorrow's success stories on their journey to prominence.

With customer relationships that, in some cases, go back over 30 years we are proud to have earned and maintained the trust of so many of our customers for so long. Regardless of the evolution of technology and market forces, the basic principles at the heart of our business relationships always remain constant.



A Global Network...

The IMO brand is increasingly recognised around the world for quality, reliability and cost efficiency. From our traditional UK base, we now derive 50% of our revenue from overseas sales, and we continue to invest in our growth in both home and international markets in order to best meet the expectations of our customers.

With global office locations in the UK, USA, Australia, Canada, France, Italy & South Africa, & with a global distribution network covering Austria, Brazil, Bulgaria, China, Cyprus, Denmark, El Salvador, Finland, Germany, Greece, Hungary, Ireland, Mexico, Netherlands, Pakistan, Portugal, Romania, Russian Federation, Spain, Switzerland, Tunisia & Vietnam, when you buy into IMO, you are buying a truly global brand.



Product Training...

IMO Precision Controls offers in-house or on-site training courses for its Drives & Automation products, including all HMI's, PLC's, Intelligent Controllers and Jaguar AC Inverter Drives.

Training modules can be standard or higher level, tailored to customer's specific requirements. They are designed to familiarise customers with the use and programming of IMO intelligent products. Each module is usually based on one product range.

To find out more about IMO bespoke training courses, contact IMO.



Product Index

Push Buttons, Rotary Knobs & Pilot Lights.....	p.6
Timers (DIN Rail Mountable, Panel Mountable & Plug-In).....	p.10
Enclosed AC Isolators.....	p.11
Direct Handle & Base Mount AC Isolators.....	p.12
Front Panel Mount AC Isolators.....	p.13
Switch 79/89 Series Isolators.....	p.14
Miniature Circuit Breakers & Residual Circuit Breakers.....	p.16
Temperature Controllers.....	p.21
Modular Heating & Lighting Contactors.....	p.22
Contactors & Thermal Overload Relays.....	p.23
iStart Enclosed Starters.....	p.29
Motor Circuit Breakers.....	p.30
Cam Switches.....	p.31
Foot Switches.....	p.32
DIN Rail Terminals.....	p.34
Industrial Power Relays & Plug-In Relays.....	p.40
Sockets For Power Relays.....	p.42
Distribution Boxes & Enclosures.....	p.44
SD1 AC Variable Speed Drive.....	p.45
Jaguar AC Variable Speed Drives.....	p.46
Single & Three Phase Power Supplies.....	p.48
Proximity Sensors.....	p.49
Level Detection.....	p.49
Photoelectric Sensors.....	p.50
Limit Switches.....	p.52
Safety Limit Switches.....	p.53
iSmart Intelligent Relays.....	p.54
iView Advanced HMI.....	p.55
<i>i</i> ³ Intelligent Control Station.....	p.56
XGB Programmable Logic Controller.....	p.58
Signal Conditioning.....	p.61
FireRaptor - Solar Panel Rapid Shutdown Solution.....	p.62
TRUE DC Solar Isolators.....	p.64
SolarConnectors.....	p.67

PUSH BUTTONS

IMO Push Buttons range include 22mm & 30mm Actuators and Lens Caps, Contact Blocks, Push Button Enclosures & Pilot Lights all subjected to strict quality control as required by stringent international standards.



Push Buttons & Rotary Knobs



Contact Blocks



Push Button Enclosures



Pilot Lights & Lens Caps

Push Buttons, Rotary Knobs, Pilot Lights & Accessories Including Pushbutton Enclosures, Lens Caps & Contact Blocks

Emergency Stop Buttons IP67



Part Number	Description	Price
BS3P3RED-O	28mm Red with White "O" Twist Release Black Bezel	£6.24
BS3P45RED	38mm Red	£9.63
BS3P44S3	40mm Red Key Release	£27.68
BC3P34RED-O	40mm Red with White "O" Twist Release Chrome Bezel	£6.99
BS3P34RED-O	40mm Red with White "O" Twist Release Black Bezel	£6.99

Push Buttons IP67



Part Number	Description	Price
BS3P14RED-O	Mushroom Head Push Button 40mm Red with White "O"	£6.24
BS3DBLA-ARROW	Black with White Arrow Spring Return Black Bezel	£4.25
B3DBLACK	Black Spring Return Aluminium Bezel	£4.85
BS3DBLACK	Black Spring Return Black Bezel	£3.97
B3DBLUE	Blue Spring Return Aluminium Bezel	£4.85
BS3DBLUE	Blue Spring Return Black Bezel	£3.97
BS3DGRE-I	Green Spring Return White/Black Bezel	£3.97
BS3DGREEN	Green Spring Return Black Bezel	£3.97
BS3DRED	Red Spring Return Black Bezel	£3.97
B3DRED	Red Spring Return Aluminium Bezel	£4.85
B3P1RED	28mm Red Spring Return Aluminium Bezel	£6.84
BS3DYELLOW	Yellow Spring Return Black Bezel	£3.97

Illuminated Push Buttons IP67



Part Number	Description	Price
B3DLRED	Red Spring Return Aluminium Bezel	£4.85
B3DLGREEN	Green Spring Return Aluminium Bezel	£4.85
B3DLYELLOW	Yellow Spring Return Aluminium Bezel	£4.85
B3DLBLUE	Blue Spring Return Aluminium Bezel	£4.85
BS3KL2	2 Position Rotary Knob Black Bezel	£6.38
BS3DT-GRE/RED	Double Actuation Green/Red Black Bezel	£8.45
BC3DT-GRE/RED	Double Actuation Green/Red Chrome Bezel	£8.45
B3DT-GRE/RED	Double Actuation Green/Red Aluminium Bezel	£8.45

Contact Blocks



Part Number	Description	Price
B3T01	1NC Clips onto B3S & B3M	£3.25
B3T10	1NO Clips onto B3S & B3M	£3.25
B4TU11	1NO & 1NC for BG Enclosures	£6.60
B4TU10F	1NO with Lamp Holder for BG Enclosures	£8.75
B4TU10	1NO for BG Enclosures	£4.10
B4TU02	2NC for BG Enclosures	£6.60
B4TU20	2NO for BG Enclosures	£6.60
B3S*	Panel Mounting Collar	£0.75

* Can also be used with LED Pilot Lights (overleaf).

Rotary Knobs IP67



Part Number	Description	Price
B3KN2	2 Position Maintained 60° Aluminium Bezel	£7.61
BC3KN2	2 Position Maintained 60° Chrome Bezel	£6.38
BS3KN2	2 Position Maintained 60° Black Bezel	£6.38
B3KN3	3 Position Maintained 60° Aluminium Bezel	£7.61
BS3KN3	3 Position Maintained 60° Black Bezel	£6.38
BS3KN9	2 Position Maintained 120° Black Bezel	£6.38
BS3KN10	2 Position Maintained 90° Black Bezel	£5.47
B3SAR0	Key Operated 2 Position Maintained 60° Aluminium Bezel Removeable In OFF	£25.35
B3SAR1	Key Operated 2 Position Maintained 60° Aluminium Bezel Removeable In ON	£24.24
B3SAR01	Key Operated 2 Position Maintained 60° Aluminium Bezel Removeable In OFF & ON	£25.35
B3SAT0	Key Operated 2 Position Spring Return 60° Aluminium Bezel Removeable In OFF	£25.35
B3SARR0	Key Operated 3 Position Maintained 60° Aluminium Bezel Removeable In OFF	£25.35
B3SARR102	Key Operated 3 Position Maintained 60° Aluminium Bezel Removeable In OFF & ON	£25.35
B3SAT00	Key Operated 3 Position Spring Return 60° Aluminium Bezel Removeable In OFF	£25.35

NOTE: All Rotary Knobs are available with either Aluminium, Black or Chrome bezels. For different bezel finishes, the part number is affected as follows:-

B3KN2 - Aluminium Bezel
BS3KN2 - Black Bezel
BC3KN2 - Chrome Bezel

LED Pilot Lights IP65



Part Number	Description	Price
LMB-110-GREEN	Green 110VAC	£8.83
LMB-110-RED	Red 110VAC	£8.83
LMB-110-WHITE	White 110VAC	£8.83
LMB-110-YELLOW	Yellow 110VAC	£8.83
LMB-230-GREEN	Green 230VAC	£8.83
LMB-230-RED	Red 230VAC	£8.83
LMB-230-WHITE	White 230VAC	£8.83
LMB-230-YELLOW	Yellow 230VAC	£8.83
LMB-24-BLUE	Blue 24V AC/DC	£8.22
LMB-24-GREEN	Green 24V AC/DC	£8.22
LMB-24-RED	Red 24V AC/DC	£8.22
LMB-24-WHITE	White 24V AC/DC	£8.22
LMB-24-YELLOW	Yellow 24V AC/DC	£8.22

Transparent Lens Caps IP67



Part Number	Description	Price
B3RFGREEN	Green Lens Cap Fresnel Lens	£2.04
B3RFRED	Red Lens Cap Fresnel Lens	£2.04
B3RGREEN	Green Lens Cap	£2.98
B3RRRED	Red Lens Cap	£2.98

Emergency Stop Stations



Part Number	Description	Price
BG10P45-11	Emergency Stop Station 40mm Red with Yellow Face 1NO and 1NC Contacts IP67	£27.38
BG10P34-01	Emergency Stop Station 40mm Twist To Release 1NC Contacts IP67	£26.11
BG10P34-02	Emergency Stop Station 40mm Twist To Release 2NC Contacts IP67	£27.79
BG10P34P-02	Emergency Stop Station 70mm Red Twist Release Yellow Enclosure Face 2NC Contacts IP67	£36.16
BG10P34P-11	Emergency Stop Station 70mm Red Twist Release Yellow Enclosure Face 1NO & 1NC Contacts IP67	£37.05
BG10P44S3-11-SK	Fire Brigade Key Operated 40mm With Yellow Shroud 1NO & 1NC	£54.44

Push Button Enclosures



Part Number	Description	Price
BG1	Grey Enclosure 1 Hole	£13.19
BG1YEL	Grey with Yellow Front Enclosure 1 Hole	£13.19
BG2	Grey Enclosure 2 Holes	£16.85
BG3	Grey Enclosure 3 Holes	£19.29

Accessories



Part Number	Description	Price
B3-SK-YELLOW	Shroud 40mm Max. Button Diameter	£9.14
J7049	Pushbutton Collar Tightening Tool	£1.40
B3-7603-2	E Stop Legend Plate	£2.59
B4-R455	Spare Key	£5.89
B3S	Push Button Collar for B3T/F Products	£0.75
B3M	Push Button Panel Mount Collar	£0.75
B3F	Lamp Holder for Push Buttons	£4.56



Emergency Stop Push Buttons

IMO STARLINE CATALOGUE 2017-18

DIN Rail Mountable, Panel Mount & Plug-In Timers

Panel Mount Timers



Part Number	Description	Price
TA11-A100-230AC	0.05s-60hr DPCO 5A 11 Pin Octal	£61.59
TA11-A24AC/DC	0.05s-60hr DPCO 5A 11 Pin Octal	£61.59
TA8-A100-230AC	0.05s-60hr DPCO 5A 8 Pin Octal	£48.70
TA8-A24AC/DC	0.05s-60hr DPCO 5A 8 Pin Octal	£48.70
TA8-DA100-230AC	0.1m-12m DPCO 5A 8 Pin Octal	£69.34
TA8-SA100-230AC	0.05s-60hr SPCO 5A 8 Pin Octal	£55.09
TA8-TA100-230AC	0.05s-60hr DPCO 5A 8 Pin Octal	£92.88
TA8-DA24AC/DC	0.06s-12m DPCO 5A 8 Pin Octal	£69.34
TA8-SA24AC/DC	0.05s-60hr SPCO Timed 5A 8 Pin Octal	£55.09

DIN Rail Mountable Timers



Part Number	Description	Price
TDM10	10 Function 24-230V AC/DC SPCO	£35.13
TDAS	Asymmetrical 24-230V AC/DC SPCO	£35.13
TDSD1	Star Delta 20-500ms 230-400VAC DPCO	£43.55
TDFR	Forward Off Reverse 2P CO 10A, 0.1s-10d	£30.98

Plug-In Timers



Part Number	Description	Price
TY4-12DC	14 Pin On Delay 0.1s-100h 12VDC	£34.24
TY4-24DC	14 Pin On Delay 0.1s-100h 24VAC/DC	£34.24
TY4-24AC	14 Pin On Delay 0.1s-100h 24VAC	£34.24
TY4-115AC	14 Pin On Delay 0.1s-100h 115VAC	£34.24
TY4-230VAC	14 Pin On Delay 0.1s-100h 230VAC	£34.24



TY4-12DC & TA8-TA100-230AC - Timers

Enclosed AC Isolators (PE69)

3, 4, 6 & 8 Pole Versions Available, On Load 20A ~ 125A

3 Pole ↑125A IP65 AC Isolator



Red/Yellow
3 Padlock Positions
IP66 Enclosure Available
Auxiliary Contact Available



Part Number	Description	Price
PE69-3020	3 Pole 20 Amp (AC21) 16 Amp (AC23)	£23.77
PE69-3025	3 Pole 25 Amp (AC21) 20 Amp (AC23)	£25.35
PE69-3032	3 Pole 32 Amp (AC21) 25 Amp (AC23)	£26.08
PE69-3040	3 Pole 40 Amp (AC21) 32 Amp (AC23)	£30.11
PE69-3063	3 Pole 63 Amp (AC21) 45 Amp (AC23)	£52.27
PE69-3080	3 Pole 80 Amp (AC21) 45 Amp (AC23)	£63.36
PE69-30100	3 Pole 100 Amp (AC21) 72 Amp (AC23)	£119.84
PE69-30125	3 Pole 125 Amp (AC21) 85 Amp (AC23)	£203.62

NOTE: Isolators available in taller enclosure from 20A - 40A versions. Part number remains the same with addition of "-L". e.g. PE69-3020-L

6 Pole ↑80A IP65 AC Isolator



Red/Yellow
3 Padlock Positions
IP66 Enclosure Available
Auxiliary Contact Available



Part Number	Description	Price
PE69-6020	6 Pole 20 Amp (AC21) 16 Amp (AC23)	£47.11
PE69-6025	6 Pole 25 Amp (AC21) 20 Amp (AC23)	£49.89
PE69-6032	6 Pole 32 Amp (AC21) 25 Amp (AC23)	£52.66
PE69-6040	6 Pole 40 Amp (AC21) 32 Amp (AC23)	£64.56
PE69-6063	6 Pole 63 Amp (AC21) 45 Amp (AC23)	£114.29
PE69-6080	6 Pole 80 Amp (AC21) 45 Amp (AC23)	£134.71

4 Pole ↑125A IP65 AC Isolator



Red/Yellow
3 Padlock Positions
IP66 Enclosure Available
Auxiliary Contact Available



Part Number	Description	Price
PE69-4020	4 Pole 20 Amp (AC21) 16 Amp (AC23)	£30.11
PE69-4025	4 Pole 25 Amp (AC21) 20 Amp (AC23)	£31.69
PE69-4032	4 Pole 32 Amp (AC21) 25 Amp (AC23)	£34.25
PE69-4040	4 Pole 40 Amp (AC21) 32 Amp (AC23)	£38.04
PE69-4063	4 Pole 63 Amp (AC21) 45 Amp (AC23)	£66.53
PE69-4080	4 Pole 80 Amp (AC21) 45 Amp (AC23)	£79.20
PE69-40100	4 Pole 100 Amp (AC21) 72 Amp (AC23)	£118.36
PE69-40125	4 Pole 125 Amp (AC21) 85 Amp (AC23)	£242.55

NOTE: Isolators available in taller enclosure from 20A - 40A versions. Part number remains the same with addition of "-L". e.g. PE69-4020-L

8 Pole ↑80A IP65 AC Isolator



Red/Yellow
3 Padlock Positions
IP66 Enclosure Available
Auxiliary Contact Available



Part Number	Description	Price
PE69-8020	8 Pole 20 Amp (AC21) 16 Amp (AC23)	£93.15
PE69-8025	8 Pole 25 Amp (AC21) 20 Amp (AC23)	£98.60
PE69-8032	8 Pole 32 Amp (AC21) 25 Amp (AC23)	£104.08
PE69-8040	8 Pole 40 Amp (AC21) 32 Amp (AC23)	£109.59
PE69-8063	8 Pole 63 Amp (AC21) 45 Amp (AC23)	£129.21
PE69-8080	8 Pole 80 Amp (AC21) 45 Amp (AC23)	£148.06

IMO STARLINE CATALOGUE 2017-18

Direct Handle (DM69) & Base Mount AC Isolators (LB69) 3 & 4 Pole Versions Available, On Load 20A ~ 80A

3 Pole ↑80A AC Isolator



Range of Interlocked Door Handles (1 or 3 Padlocking Postions) Available



Part Number	Description	Price
LB69-3020	3 Pole 20 Amp (AC21) 16 Amp (AC23)	£19.00
LB69-3025	3 Pole 25 Amp (AC21) 20 Amp (AC23)	£20.60
LB69-3032	3 Pole 32 Amp (AC21) 25 Amp (AC23)	£22.30
LB69-3040	3 Pole 40 Amp (AC21) 32 Amp (AC23)	£22.97
LB69-3063	3 Pole 63 Amp (AC21) 45 Amp (AC23)	£31.69
LB69-3080	3 Pole 80 Amp (AC21) 45 Amp (AC23)	£34.85

4 Pole ↑80A AC Isolator



Range of Interlocked Door Handles (1 or 3 Padlocking Postions) Available



Part Number	Description	Price
LB69-4020	4 Pole 20 Amp (AC21) 16 Amp (AC23)	£23.76
LB69-4025	4 Pole 25 Amp (AC21) 20 Amp (AC23)	£25.67
LB69-4032	4 Pole 32 Amp (AC21) 25 Amp (AC23)	£26.88
LB69-4040	4 Pole 40 Amp (AC21) 32 Amp (AC23)	£27.70
LB69-4063	4 Pole 63 Amp (AC21) 45 Amp (AC23)	£37.21
LB69-4080	4 Pole 80 Amp (AC21) 45 Amp (AC23)	£40.38

NOTE: 6 Pole and 8 Pole versions are available upon request.

3,4 & 8 Pole ↑80A AC Isolator



1 Padlocking Postion
48x48 Handle in Black
or Red/Yellow
To Suit Distribution Boxes



Part Number	Description	Price
DM69-3020-RY48	3 Pole 20 Amp (AC21) Red/Yellow Handle	£17.61
DM69-3032-RY48	3 Pole 32 Amp (AC21) Red/Yellow Handle	£19.71
DM69-3063-RY48	3 Pole 63 Amp (AC21) Red/Yellow Handle	£27.47
DM69-4032-RY48	4 Pole 32 Amp (AC21) Red/Yellow Handle	£25.28
DM69-4063-RY48	4 Pole 63 Amp (AC21) Red/Yellow Handle	£33.97
DM69-8032-RY48	8 Pole 32 Amp (AC21) Red/Yellow Handle	£56.12

Accessories



Part Number	Description	Price
H69-0001	Red/Yellow Handle 64x64mm	£4.45
H69-0001-B	Black Handle 64x64mm	£4.45
H69-0003	Red/Yellow Handle 48x48mm	£4.45
H69-0004	Black Handle 48x48mm	£4.45
J7049	Door Handle Mounting Tool	£1.40
E69-0001	Extension Shaft 100mm	£1.11
E69-0002	Extension Shaft 200mm	£1.11
E69-0003	Extension Shaft 300mm	£1.11
E69-0004	Extension Shaft 400mm	£2.24

Front Panel Mount AC Isolators (PM69) 3 & 4 Pole Versions Available, On Load 20A ~ 80A

3 Pole ↑125A AC Isolator



Range of Door Handles
(1 or 3 Padlocking Positions)
Available



Part Number	Description	Price
PM69-3020-B64	3 Pole 20 Amp Black Handle 64x64mm	£19.76
PM69-3020-RY48	3 Pole 20 Amp Red/Yellow Handle 48x48mm	£19.76
PM69-3020-RY64	3 Pole 20 Amp Red/Yellow Handle 64x64mm	£19.76
PM69-3025-RY64	3 Pole 25 Amp Red/Yellow Handle 64x64mm	£20.97
PM69-3032-RY64	3 Pole 32 Amp Red/Yellow Handle 64x64mm	£22.04
PM69-3040-RY64	3 Pole 40 Amp Red/Yellow Handle 64x64mm	£23.58
PM69-3063-RY64	3 Pole 63 Amp Red/Yellow Handle 64x64mm	£27.47
PM69-3080-RY64	3 Pole 80 Amp Red/Yellow Handle 64x64mm	£35.89
PM69-30100-RY64	3 Pole 100 Amp Red/Yellow Handle 64x64mm	£64.64
PM69-30125-RY64	3 Pole 125 Amp Red/Yellow Handle 64x64mm	£80.81

4 Pole ↑100A AC Isolator



Range of Door Handles
(1 or 3 Padlocking Positions)
Available



Part Number	Description	Price
PM69-4020-RY64	4 Pole 20 Amp Red/Yellow Handle 64x64mm	£24.80
PM69-4032-RY48	4 Pole 32 Amp Red/Yellow Handle 48x48mm	£26.93
PM69-4040-RY64	4 Pole 40 Amp Red/Yellow Handle 64x64mm	£29.49
PM69-4063-RY64	4 Pole 63 Amp Red/Yellow Handle 64x64mm	£34.54
PM69-4080-RY64	4 Pole 80 Amp Red/Yellow Handle 64x64mm	£41.76
PM69-40100-RY64	4 Pole 100 Amp Red/Yellow Handle 64x64mm	£67.99



PM69-3020-RY64 - AC Isolator

IMO STARLINE CATALOGUE 2017-18

Switch 79/89 Series Isolators & Accessories

Compact Isolator CM Series



DIN Rail & Base Mount
3 & 4 Pole As Standard
Rotary Door Interlocked Handles
Ratings from 63A ~ 630A



Part Number	Description	Price
CM793063	3 Pole 63 Amp	£31.77
CM793100	3 Pole 100 Amp	£37.26
CM793125	3 Pole 125 Amp	£41.91
CM794100	4 Pole 100 Amp	£45.92
CM794125	4 Pole 125 Amp	£48.25
CM794160	4 Pole 160 Amp	£76.70
CM794200	4 Pole 200 Amp	£90.60

Isolator MS Series



Base Mount
3 & 4 Pole As Standard
Rotary Door Interlocked Handles
Ratings from 63A ~ 630A



Part Number	Description	Price
MS793160	3 Pole 160 Amps	£106.79
MS793200	3 Pole 200 Amps	£112.15
MS793250	3 Pole 250 Amps	£132.76
MS793400	3 Pole 400 Amps	£177.78
MS793630	3 Pole 630 Amps	£338.41
MS794200	4 Pole 200 Amps	£126.78
MS794315	4 Pole 315 Amps	£192.69
MS794630	4 Pole 630 Amps	£396.38

CM & CF Series Accessories



Part Number	Description	Price
79E1005	200mm Extension Shaft Rotary Type	£8.28
79E1017*	320mm Extension Shaft	£7.69
79E1008	400mm Extension Shaft Rotary Type	£13.44
79H1005	Rotary Black Handle	£15.79
79H1006**	Rotary Red/Yellow Handle	£19.70

* For use with CF Series only
** For use with CF & CM Series

MS & SF Series Accessories



Part Number	Description	Price
79E1010	200mm Extension Shaft Rotary Type	£6.31
79E1011	250mm Extension Shaft Rotary Type	£9.74
79E1012**	320mm Extension Shaft Rotary Type	£7.91
79E1013	500mm Extension Shaft Rotary Type	£17.50
79H1008	Black Rotary Handle	£17.78
79H1009**	Red/Yellow Rotary Handle (Long)	£21.73
79H1006*	Rotary Red/Yellow Handle	£6.31

* For use with SF Series only
** For use with SF & MS Series

Compact Switch Fuse **CF Series**



DIN Rail Mount
Interlocked Door Handles
3 & 4 Pole As Standard
Ratings up to 800A



Part Number	Description	Price
CF793020	3 Pole 20 Amps	£44.26
CF793N20	3 Pole + Neutral 20 Amps	£63.80
CF793032	3 Pole 32 Amps	£44.73
CF793N32	3 Pole + Neutral 32 Amps	£67.18

Switch Fuse **SF Series**



Base Mount
Interlocked Door Handles
3 & 4 Pole As Standard
Ratings up to 800A



Part Number	Description	Price
SF893032	3 Pole 32 Amps BS88 Fuse Size A1	£56.86
SF893063	3 Pole 63 Amps BS88 Fuse Size A2	£67.58
SF893100	3 Pole 100 Amps BS88 Fuse Size A4	£105.90
SF893250	3 Pole 250 Amps BS88 Fuse Size B1-B3	£285.31
SF893400	3 Pole 400 Amps BS88 Fuse Size B1-B4	£306.31
SF894160	4 Pole 160 Amps BS88 Fuse Size A4	£173.55

Distribution Boxes, Enclosures & Accessories

IP66/55 Terminal Junction Boxes



Polycarbonate, V0 Rated
Supplied with 3 Cable Entry
Glands & Sealing Plugs



Part Number	Description	Price
TB30C	7xM20 Entry (88 x 88 x 53mm)	£4.44
TB31C	7xM25 Entry (98 x 98 x 61mm)	£5.83
TB32C	6xM25/32 & 4xM25 Entry (119 x 139 x 70mm)	£11.02
TB33C	10xM25/32 Entry (125 x 167 x 82mm)	£16.59

Relay & Contactor Enclosures



IP65 Rated



Part Number	Description	Price
P1M	With DIN Rail (89 x 180 x 101mm)	£13.66
P1MT	With Start & Stop Buttons	£23.08

IMO STARLINE CATALOGUE 2017-18

Miniature Circuit Breakers, Residual Circuit Breakers & Accessories

4.5kA MCB C Curve 1 Pole + N



Manufactured in accordance
with IEC 60898-1
& IEC 60947-2



Part Number	Description	Price
B4C1N02A	4.5kA MCB 1 Pole + N 2 Amp	£8.13
B4C1N04A	4.5kA MCB 1 Pole + N 4 Amp	£8.13
B4C1N06A	4.5kA MCB 1 Pole + N 6 Amp	£8.13
B4C1N10A	4.5kA MCB 1 Pole + N 10 Amp	£8.13
B4C1N16A	4.5kA MCB 1 Pole + N 16 Amp	£8.13
B4C1N20A	4.5kA MCB 1 Pole + N 20 Amp	£8.13
B4C1N25A	4.5kA MCB 1 Pole + N 25 Amp	£8.13
B4C1N32A	4.5kA MCB 1 Pole + N 32 Amp	£8.13

6kA MCB B Curve 1 Pole



Manufactured in accordance
with IEC 60898-1
& IEC 60947-2



Part Number	Description	Price
BR6B1001A	6kA MCB 1 Pole 1 Amp	£5.06
BR6B1002A	6kA MCB 1 Pole 2 Amp	£5.06
BR6B1004A	6kA MCB 1 Pole 4 Amp	£5.06
BR6B1006A	6kA MCB 1 Pole 6 Amp	£5.06
BR6B1010A	6kA MCB 1 Pole 10 Amp	£5.06
BR6B1016A	6kA MCB 1 Pole 16 Amp	£5.06
BR6B1020A	6kA MCB 1 Pole 20 Amp	£5.06
BR6B1025A	6kA MCB 1 Pole 25 Amp	£5.06
BR6B1032A	6kA MCB 1 Pole 32 Amp	£5.06
BR6B1040A	6kA MCB 1 Pole 40 Amp	£5.06
BR6B1050A	6kA MCB 1 Pole 50 Amp	£5.06
BR6B1063A	6kA MCB 1 Pole 63 Amp	£5.06

6kA MCB C Curve 1 Pole



Manufactured in accordance
with IEC 60898-1
& IEC 60947-2



Part Number	Description	Price
BR6C1001A	6kA MCB 1 Pole 1 Amp	£5.06
BR6C1002A	6kA MCB 1 Pole 2 Amp	£5.06
BR6C1004A	6kA MCB 1 Pole 4 Amp	£5.06
BR6C1006A	6kA MCB 1 Pole 6 Amp	£5.06
BR6C1010A	6kA MCB 1 Pole 10 Amp	£5.06
BR6C1016A	6kA MCB 1 Pole 16 Amp	£5.06
BR6C1020A	6kA MCB 1 Pole 20 Amp	£5.06
BR6C1025A	6kA MCB 1 Pole 25 Amp	£5.06
BR6C1032A	6kA MCB 1 Pole 32 Amp	£5.06
BR6C1040A	6kA MCB 1 Pole 40 Amp	£5.06
BR6C1050A	6kA MCB 1 Pole 50 Amp	£5.06
BR6C1063A	6kA MCB 1 Pole 63 Amp	£5.06

6kA MCB C Curve 2 Pole



Manufactured in accordance
with IEC 60898-1
& IEC 60947-2



Part Number	Description	Price
BR6C2001A	6kA MCB 2 Pole 1 Amp	£10.12
BR6C2002A	6kA MCB 2 Pole 2 Amp	£10.12
BR6C2004A	6kA MCB 2 Pole 4 Amp	£10.12
BR6C2006A	6kA MCB 2 Pole 6 Amp	£10.12
BR6C2010A	6kA MCB 2 Pole 10 Amp	£10.12
BR6C2016A	6kA MCB 2 Pole 16 Amp	£10.12
BR6C2020A	6kA MCB 2 Pole 20 Amp	£10.12
BR6C2025A	6kA MCB 2 Pole 25 Amp	£10.12
BR6C2032A	6kA MCB 2 Pole 32 Amp	£10.12
BR6C2040A	6kA MCB 2 Pole 40 Amp	£10.12
BR6C2050A	6kA MCB 2 Pole 50 Amp	£10.12
BR6C2063A	6kA MCB 2 Pole 63 Amp	£10.12

6kA MCB C Curve 3 Pole



Manufactured in accordance
with IEC 60898-1
& IEC 60947-2



Part Number	Description	Price
BR6C3001A	6kA MCB 3 Pole 1 Amp	£15.18
BR6C3002A	6kA MCB 3 Pole 2 Amp	£15.18
BR6C3004A	6kA MCB 3 Pole 4 Amp	£15.18
BR6C3006A	6kA MCB 3 Pole 6 Amp	£15.18
BR6C3010A	6kA MCB 3 Pole 10 Amp	£15.18
BR6C3016A	6kA MCB 3 Pole 16 Amp	£15.18
BR6C3020A	6kA MCB 3 Pole 20 Amp	£15.18
BR6C3025A	6kA MCB 3 Pole 25 Amp	£15.18
BR6C3032A	6kA MCB 3 Pole 32 Amp	£15.18
BR6C3040A	6kA MCB 3 Pole 40 Amp	£15.18
BR6C3050A	6kA MCB 3 Pole 50 Amp	£15.18
BR6C3063A	6kA MCB 3 Pole 63 Amp	£15.18

10kA MCB C Curve 1 Pole



Manufactured in accordance
with IEC 60898-1
& IEC 60947-2



Part Number	Description	Price
B10C1001A	10kA MCB 1 Pole 1 Amp	£6.25
B10C1002A	10kA MCB 1 Pole 2 Amp	£6.25
B10C1004A	10kA MCB 1 Pole 4 Amp	£6.25
B10C1006A	10kA MCB 1 Pole 6 Amp	£6.25
B10C1010A	10kA MCB 1 Pole 10 Amp	£6.25
B10C1016A	10kA MCB 1 Pole 16 Amp	£6.25
B10C1020A	10kA MCB 1 Pole 20 Amp	£6.25
B10C1025A	10kA MCB 1 Pole 25 Amp	£6.25
B10C1032A	10kA MCB 1 Pole 32 Amp	£6.25
B10C1040A	10kA MCB 1 Pole 40 Amp	£6.25
B10C1050A	10kA MCB 1 Pole 50 Amp	£6.25
B10C1063A	10kA MCB 1 Pole 63 Amp	£6.25

10kA MCB C Curve 2 Pole



Manufactured in accordance
with IEC 60898-1
& IEC 60947-2



Part Number	Description	Price
B10C2002A	10kA MCB 2 Pole 2 Amp	£13.25
B10C2004A	10kA MCB 2 Pole 4 Amp	£13.25
B10C2006A	10kA MCB 2 Pole 6 Amp	£13.25
B10C2010A	10kA MCB 2 Pole 10 Amp	£13.25
B10C2016A	10kA MCB 2 Pole 16 Amp	£13.25
B10C2020A	10kA MCB 2 Pole 20 Amp	£13.25
B10C2025A	10kA MCB 2 Pole 25 Amp	£13.25
B10C2032A	10kA MCB 2 Pole 32 Amp	£13.25
B10C2040A	10kA MCB 2 Pole 40 Amp	£13.25
B10C2050A	10kA MCB 2 Pole 50 Amp	£13.25
B10C2063A	10kA MCB 2 Pole 63 Amp	£13.25

10kA MCB C Curve 3 Pole



Manufactured in accordance
with IEC 60898-1
& IEC 60947-2



Part Number	Description	Price
B10C3002A	10kA MCB 3 Pole 2 Amp	£20.72
B10C3004A	10kA MCB 3 Pole 4 Amp	£20.72
B10C3006A	10kA MCB 3 Pole 6 Amp	£20.72
B10C3010A	10kA MCB 3 Pole 10 Amp	£20.72
B10C3016A	10kA MCB 3 Pole 16 Amp	£20.72
B10C3020A	10kA MCB 3 Pole 20 Amp	£20.72
B10C3025A	10kA MCB 3 Pole 25 Amp	£20.72
B10C3032A	10kA MCB 3 Pole 32 Amp	£20.72
B10C3040A	10kA MCB 3 Pole 40 Amp	£20.72
B10C3050A	10kA MCB 3 Pole 50 Amp	£20.72
B10C3063A	10kA MCB 3 Pole 63 Amp	£20.72

10kA MCB C Curve 3 Pole + N



Manufactured in accordance
with IEC 60898-1
& IEC 60947-2



Part Number	Description	Price
B10C3N10A-L	10kA MCB 3 Pole + N 10 Amp	£27.23
B10C3N16A-L	10kA MCB 3 Pole + N 16 Amp	£27.23
B10C3N20A-L	10kA MCB 3 Pole + N 20 Amp	£27.23
B10C3N25A-L	10kA MCB 3 Pole + N 25 Amp	£27.23
B10C3N32A-L	10kA MCB 3 Pole + N 32 Amp	£27.23
B10C3N40A-L	10kA MCB 3 Pole + N 40 Amp	£27.23

10kA MCB D Curve 1 Pole



Manufactured in accordance
with IEC 60898-1
& IEC 60947-2



Part Number	Description	Price
B10D1002A	10kA MCB 1 Pole 2 Amp	£6.99
B10D1004A	10kA MCB 1 Pole 4 Amp	£6.99
B10D1006A	10kA MCB 1 Pole 6 Amp	£6.99
B10D1010A	10kA MCB 1 Pole 10 Amp	£6.99
B10D1016A	10kA MCB 1 Pole 16 Amp	£6.99
B10D1020A	10kA MCB 1 Pole 20 Amp	£6.99
B10D1025A	10kA MCB 1 Pole 25 Amp	£6.99
B10D1032A	10kA MCB 1 Pole 32 Amp	£6.99
B10D1040A	10kA MCB 1 Pole 40 Amp	£6.99
B10D1050A	10kA MCB 1 Pole 50 Amp	£6.99
B10D1063A	10kA MCB 1 Pole 63 Amp	£6.99

10kA MCB D Curve 2 Pole



Manufactured in accordance
with IEC 60898-1
& IEC 60947-2



Part Number	Description	Price
B10D2002A	10kA MCB 2 Pole 2 Amp	£15.38
B10D2004A	10kA MCB 2 Pole 4 Amp	£15.38
B10D2006A	10kA MCB 2 Pole 6 Amp	£15.38
B10D2010A	10kA MCB 2 Pole 10 Amp	£15.38
B10D2016A	10kA MCB 2 Pole 16 Amp	£15.38
B10D2020A	10kA MCB 2 Pole 20 Amp	£15.38
B10D2025A	10kA MCB 2 Pole 25 Amp	£15.38
B10D2032A	10kA MCB 2 Pole 32 Amp	£15.38
B10D2040A	10kA MCB 2 Pole 40 Amp	£15.38
B10D2050A	10kA MCB 2 Pole 50 Amp	£15.38
B10D2063A	10kA MCB 2 Pole 63 Amp	£15.38

10kA MCB D Curve 3 Pole



Manufactured in accordance
with IEC 60898-1
& IEC 60947-2



Part Number	Description	Price
B10D3002A	10kA MCB 3 Pole 2 Amp	£23.99
B10D3004A	10kA MCB 3 Pole 4 Amp	£23.99
B10D3006A	10kA MCB 3 Pole 6 Amp	£23.99
B10D3010A	10kA MCB 3 Pole 10 Amp	£23.99
B10D3016A	10kA MCB 3 Pole 16 Amp	£23.99
B10D3020A	10kA MCB 3 Pole 20 Amp	£23.99
B10D3025A	10kA MCB 3 Pole 25 Amp	£23.99
B10D3032A	10kA MCB 3 Pole 32 Amp	£23.99
B10D3040A	10kA MCB 3 Pole 40 Amp	£23.99
B10D3050A	10kA MCB 3 Pole 50 Amp	£23.99
B10D3063A	10kA MCB 3 Pole 63 Amp	£23.99

10kA RCCB AC 30mA 3 Pole+N



Manufactured in accordance with IEC 61008-1



Part Number	Description	Price
B10R4025-30	10kA RCCB AC 3 Pole + N 25 Amp	£37.50
B10R4032-30	10kA RCCB AC 3 Pole + N 32 Amp	£37.50
B10R4040-30	10kA RCCB AC 3 Pole + N 40 Amp	£37.50
B10R4063-30	10kA RCCB AC 3 Pole + N 63 Amp	£42.74

10kA RCCB AC 30mA 1 Pole+N



Manufactured in accordance with IEC 61008-1



Part Number	Description	Price
B10R2025-30	10kA RCCB AC 1 Pole + N 25 Amp	£24.98
B10R2032-30	10kA RCCB AC 1 Pole + N 32 Amp	£24.98
B10R2040-30	10kA RCCB AC 1 Pole + N 40 Amp	£24.98
B10R2063-30	10kA RCCB AC 1 Pole + N 63 Amp	£27.39

6kA RCBO AC B Curve 1 Pole+N



Manufactured in accordance with IEC 61009



Part Number	Description	Price
B6BR1N06-30	6kA RCBO 30mA 1 Pole + N 6 Amp	£53.69
B6BR1N10-30	6kA RCBO 30mA 1 Pole + N 10 Amp	£53.69
B6BR1N16-30	6kA RCBO 30mA 1 Pole + N 16 Amp	£53.69
B6BR1N20-30	6kA RCBO 30mA 1 Pole + N 20 Amp	£53.69
B6BR1N25-30	6kA RCBO 30mA 1 Pole + N 25 Amp	£53.69
B6BR1N32-30	6kA RCBO 30mA 1 Pole + N 32 Amp	£53.69
B6BR1N40-30	6kA RCBO 30mA 1 Pole + N 40 Amp	£53.69

NOTE: 100/300/500mA residual current available upon request, type A or AC. Please contact IMO.

6kA RCBO A C Curve 1 Pole+N



Manufactured in accordance with IEC 61009



Part Number	Description	Price
B6CR1N06-30-A	6kA RCBO 30mA 1 Pole + N 6 Amp	£62.88
B6CR1N10-30-A	6kA RCBO 30mA 1 Pole + N 10 Amp	£62.88
B6CR1N16-30-A	6kA RCBO 30mA 1 Pole + N 16 Amp	£62.88
B6CR1N20-30-A	6kA RCBO 30mA 1 Pole + N 20 Amp	£62.88
B6CR1N25-30-A	6kA RCBO 30mA 1 Pole + N 25 Amp	£62.88
B6CR1N32-30-A	6kA RCBO 30mA 1 Pole + N 32 Amp	£62.88
B6CR1N40-30-A	6kA RCBO 30mA 1 Pole + N 40 Amp	£62.88

NOTE: 100/300/500mA residual current available upon request, type A or AC. Please contact IMO.

6kA RCBO A D Curve 1 Pole + N



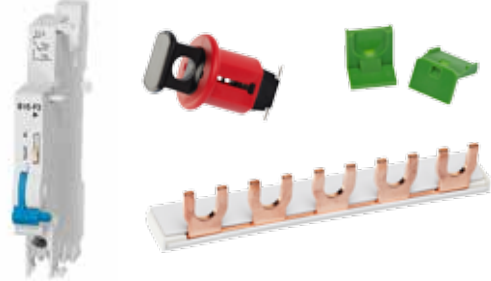
Manufactured in accordance
with IEC 61009



Part Number	Description	Price
B6DR1N06-30-A	6kA RCBO 30mA 1 Pole + N 6 Amp	£62.88
B6DR1N10-30-A	6kA RCBO 30mA 1 Pole + N 10 Amp	£62.88
B6DR1N16-30-A	6kA RCBO 30mA 1 Pole + N 16 Amp	£62.88
B6DR1N20-30-A	6kA RCBO 30mA 1 Pole + N 20 Amp	£62.88
B6DR1N25-30-A	6kA RCBO 30mA 1 Pole + N 25 Amp	£62.88
B6DR1N32-30-A	6kA RCBO 30mA 1 Pole + N 32 Amp	£62.88
B6DR1N40-30-A	6kA RCBO 30mA 1 Pole + N 40 Amp	£62.88

NOTE: 100/300/500mA residual current available upon request, type A or AC. Please contact IMO.

Accessories



Part Number	Description	Price
BA1	MCB Terminal Adaptor	£2.57
B10-TERM	MCB Terminal Blanking Cap	£0.70
B10-F3	MCB Aux Contact 1PCO 6A	£6.21
B10S3	MCB Shunt Trip	£11.35
B10-LOCK	MCB Lock Device (Padlock not included)	£5.89
B10BB1F100-1M	MCB Busbar 1P 80 Amp 1m Fork Type	£16.98
B10BB3F100-1M	MCB Busbar 3P 80 Amp 1m Fork Type	£38.04
B10BB1P100-1M	MCB Busbar 1P 80 Amp 1m Pin Type	£16.98
B10BB3P100-1M	MCB Busbar 3P 80 Amp 1m Pin Type	£38.04
B10BBCAP1	End Cap for 1P Busbar	£0.34
B10BBCAP3	End Cap for 3P Busbar	£0.40
BR6-F2	Aux Contact 1NO + 1NC	£4.53
BR6-S2	Shunt Trip 400/230/110VAC	£5.22
BR6-U2-02	Under/Over Voltage Trip 170V < 230V > 280V	£12.52

Isolating Switches



Manufactured in accordance
with IEC 60947-3



Part Number	Description	Price
BIS1063A	Isolating Switch 1 Pole 63 Amp	£4.22
BIS2063A	Isolating Switch 2 Pole 63 Amp	£9.95
BIS2125A	Isolating Switch 2 Pole 125 Amp	£20.01
BIS3063A	Isolating Switch 3 Pole 63 Amp	£12.66
BIS4063A	Isolating Switch 4 Pole 63 Amp	£19.90
BIS4125A	Isolating Switch 4 Pole 125 Amp	£40.02
BIS2100C	Isolating Switch 2 Pole 100 Amp	£9.95

IP66 Panel Mount Temperature Controllers

Multi-selectable inputs including Thermocouple, RTD, Current & Voltage

TP20A PID Controller

48 x 24 x 110mm



Part Number	Description	Price
TP20A-AM240	4-20mA Output 85-264VAC Supply	£148.63
TP20A-RM240	Relay Output 85-264VAC Supply	£148.61
TP20A-SM240	SSR Output 85-264VAC Supply	£148.63

NOTE: Other options available. Please contact IMO.

TP40B PID Controller

48 x 48 x 110mm



Part Number	Description	Price
TP40B-AM240	4-20mA Output 85-264VAC Supply	£155.00
TP40B-AM24DC	4-20mA Output 20-28VAC/DC Supply	£155.00
TP40B-RM240	Relay Output 85-264VAC Supply	£146.13
TP40B-RM24DC	Relay Output 20-28VAC/DC Supply	£146.13
TP40B-SM240	SSR Output 85-264VAC Supply	£146.13
TP40B-SM24DC	SSR Output 20-28VAC/DC Supply	£146.13
TP40B-VM240	0-10VDC Output 85-264VAC Supply	£155.00
TP40B-VM24DC	0-10VDC Output 20-28VAC/DC Supply	£155.00

NOTE: Other options available. Please contact IMO.

TP80A PID Controller

48 x 96 x 96mm



Part Number	Description	Price
TP80A-RM240	Relay Output 85-264VAC Supply	£204.16
TP80A-RMA224DC	Relay Output 20-28VAC/DC Supply	£233.23
TP80A-SMA2240	SSR Output 85-264VAC Supply	£222.97
TP80A-VMA224DC	0-10VDC Output 20-28VAC/DC Supply	£243.55

NOTE: Other options available. Please contact IMO.

TP90A PID Controller

96 x 96 x 110mm



Part Number	Description	Price
TP90A-RMA2240	Relay Output 85-264VAC Supply	£258.25
TP90A-RMDR240	Relay Output 85-264VAC Supply	£268.12
TP90A-VMA2240	0-10VDC Output 85-264VAC Supply	£280.46

NOTE: Other options available. Please contact IMO.

IMO STARLINE CATALOGUE 2017-18

Modular Heating & Lighting Contactors

Suitable for control of lamps, heating, air-conditioning & motor control

20A AC1 AC Coil Single Module



Part Number	Description	Price
HC20-02230	2 Pole NC 230V	£19.93
HC20-0224	2 Pole NC 24V	£19.93
HC20-20230	2 Pole NO 230V	£19.93
HC20-2024	2 Pole NO 24V	£19.93
HC20-11230	1 Pole NO + 1 Pole NC 230V	£19.93

40A AC1 AC Coil Triple Module



Part Number	Description	Price
HC40-04230	4 Pole NC 230V	£56.07
HC40-40230	4 Pole NO 230V	£56.07
HC40-22230	2 Pole NO + 2 Pole NC 230V	£51.37
HC40-20230	2 Pole NO 230V	£34.45

NOTE: Other variations of NO & NC Poles available. Please contact IMO.

25A AC1 AC Coil Double Module



Part Number	Description	Price
HC25-04230	4 Pole NC 230V	£22.19
HC25-0424	4 Pole NC 24V	£22.19
HC25-40230	4 Pole NO 230V	£22.19
HC25-4024	4 Pole NO 24V	£16.79

NOTE: Other variations of NO & NC Poles available. Please contact IMO.

63A AC1 AC Coil Triple Module

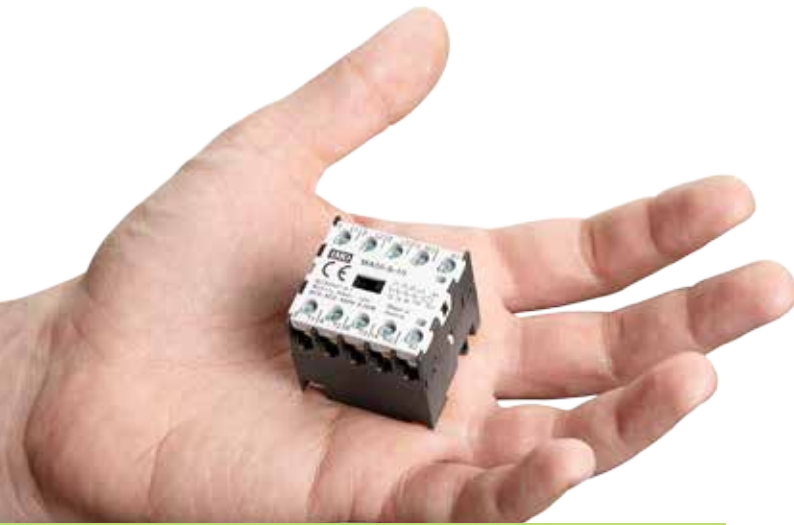


Part Number	Description	Price
HC63-40230	4 Pole NO 230V	£62.00
HC63-20230	2 Pole NO 230V	£41.33

NOTE: Other variations of NO & NC Poles available. Please contact IMO.

Contactors 4~400kW & Accessories

High reliability contactors, contact blocks, interlocks and thermal overload relays



MA05 Micro Contactors - The World's Smallest

2.2kW 5A AC3 Micro Contactor

TS15 DIN Rail mountable
Ultra small dimensions



Part Number	Description	Price
MA05-S-01110AC	3 Pole NO 12A AC1 Aux. 1NC 110VAC	£19.47
MA05-S-0124AC	3 Pole NO 12A AC1 Aux. 1NC 24VAC	£19.47
MA05-S-10110AC	3 Pole NO 12A AC1 Aux. 1NO 110VAC	£19.47
MA05-S-10230AC	3 Pole NO 12A AC1 Aux. 1NO 230VAC	£19.47
MA05-S-0124DC	3 Pole NO 12A AC1 Aux. 1NC 24VDC	£26.58
MA05-S-1024DC	3 Pole NO 12A AC1 Aux. 1NO 24VDC	£26.58

NOTE: Other variations available including Reversing Pair & PCB mount. Please contact IMO.

4kW 9A AC3 Mini Contactor



Screw terminals option
Solder pins option
Fast on tab connection option



Part Number	Description	Price
MB09-F-00230	3 Pole NO Fast On Connection 230VAC	£20.06
MB09-P-10=24	3 Pole NO Aux. 1NO PCB Mount 24VDC	£25.98
MB09-R-S-0124	Reversing Pair 3 Pole NO Aux. 1NC 24VAC	£44.29
MB09-S-0040230	4 Pole NO 230VAC	£25.47
MB09-S-01230	3 Pole NO Aux. 1NC 230VAC*	£19.77
MB09-S-01=24	3 Pole NO Aux. 1NC 24VDC*	£25.98
MB09-S-10110	3 Pole NO Aux. 1NO 110VAC*	£19.77
MB09-S-10230	3 Pole NO Aux. 1NO 230VAC*	£19.77
MB09-S-1024	3 Pole NO Aux. 1NO 24VAC*	£19.77
MB09-S-10400	3 Pole NO Aux. 1NO 400VAC*	£19.77
MB09-S-10=24	3 Pole NO Aux. 1NO 24VDC*	£25.98

* Overload = U12/16E...K1

5.5kW 12A AC3 Mini Contactor



Screw terminals option
Solder pins option
Fast on tab connection option



Part Number	Description	Price
MB12-S-01=24	3 Pole NO Aux. 1NC 24VDC*	£31.46
MB12-S-10110	3 Pole NO Aux. 1NO 110VAC*	£25.77
MB12-S-10230	3 Pole NO Aux. 1NO 230VAC*	£25.77
MB12-S-1024	3 Pole NO Aux. 1NO 24VAC*	£25.77
MB12-S-10=24	3 Pole NO Aux. 1NC 24VDC*	£31.46

* Overload = U12/16E...K1

4kW 10A AC3 Contactor



Coil connection top & bottom
Bifurcated aux. contacts
Easy coil swap



Part Number	Description	Price
MC10N-S-00-22110AC	Relay Contactor 4 Pole (2NO/2NC) 110VAC	£23.69
MC10N-S-00-2224AC	Relay Contactor 4 Pole (2NO/2NC) 24VAC	£23.69
MC10N-S-00-40110AC	4 Pole NO 110VAC*	£25.82
MC10N-S-00-40230AC	4 Pole NO 230VAC*	£23.69
MC10N-S-00-4024AC	4 Pole NO 24VAC*	£22.65
MC10N-S-0031110AC	3 Pole NO + 1 Pole NC 110VAC*	£25.82
MC10N-S-01110AC	3 Pole NO Aux. 1NC 110VAC*	£20.06
MC10N-S-01230AC	3 Pole NO Aux. 1NC 230VAC*	£20.06
MC10N-S-0124AC	3 Pole NO Aux. 1NC 24VAC*	£20.06
MC10N-S-0124DC	3 Pole NO Aux. 1NC 24VDC*	£28.70
MC10N-S-01400AC	3 Pole NO Aux. 1NC 400VAC*	£20.06
MC10N-S-10110AC	3 Pole NO Aux. 1NO 110VAC*	£20.06
MC10N-S-10230AC	3 Pole NO Aux. 1NO 230VAC*	£20.06
MC10N-S-1024AC	3 Pole NO Aux. 1NO 24VAC*	£20.06
MC10N-S-1024DC	3 Pole NO Aux. 1NO 24VDC*	£28.70
MC10N-S-10400AC	3 Pole NO Aux. 1NO 400VAC*	£20.06

* Overload = MCOR-1... or U12/16E...-MC

AC3 DC Operated Contactor



Low power consumption
3W inrush-sealed



Part Number	Description	Price
MCD10-S-00-4024DC	4 Pole NO 4kW 10A 24VDC	£46.97
MCD10-S-10=24	3 Pole NO 4kW 10A Aux. 1NO 24VDC	£43.06
MCD14-S-10=24	3 Pole NO 5.5kW 14A Aux. 1NO 24VDC	£45.66
MCD18-S-10=24	3 Pole NO 7.5kW 18A Aux. 1NO 24VDC	£54.61
MCD22-S-10=24	3 Pole NO 11kW 22A Aux. 1NO 24VDC	£64.68
MCD32-S-00=24	3 Pole NO 15kW 24VDC	£89.52
MCD40-S-00=24	3 Pole NO 18.5kW 24VDC	£106.41

* Overload = MCOR-1... or U12/16E...-MC

5.5kW 14A AC3 Contactor



Coil connection top & bottom
Bifurcated aux. contacts
Easy coil swap



Part Number	Description	Price
MC14N-S-00-4024AC	4 Pole NO 24VAC*	£31.22
MC14N-S-01110AC	3 Pole NO Aux. 1NC 110VAC*	£24.66
MC14N-S-01230AC	3 Pole NO Aux. 1NC 230VAC*	£24.66
MC14N-S-0124AC	3 Pole NO Aux. 1NC 24VAC*	£24.66
MC14N-S-0124DC	3 Pole NO Aux. 1NC 24VDC*	£34.99
MC14N-S-10110AC	3 Pole NO Aux. 1NO 110VAC*	£24.66
MC14N-S-10230AC	3 Pole NO Aux. 1NO 230VAC*	£24.66
MC14N-S-1024AC	3 Pole NO Aux. 1NO 24VAC*	£24.66
MC14N-S-1024DC	3 Pole NO Aux. 1NO 24VDC*	£34.99
MC14N-S-10400AC	3 Pole NO Aux. 1NO 400VAC*	£24.66

* Overload = MCOR-1... or U12/16E...-MC

7.5kW 18A AC3 Contactor



Coil connection top & bottom
Bifurcated aux. contacts
Easy coil swap



Part Number	Description	Price
MC18N-S-00-40110AC	4 Pole NO 110VAC*	£36.60
MC18N-S-00-40230AC	4 Pole NO 230VAC*	£36.60
MC18N-S-00-4024AC	4 Pole NO 24VAC*	£36.60
MC18N-S-01110AC	3 Pole NO Aux. 1NC 110VAC*	£28.90
MC18N-S-01230AC	3 Pole NO Aux. 1NC 230VAC*	£28.90
MC18N-S-0124AC	3 Pole NO Aux. 1NC 24VAC*	£28.90
MC18N-S-0124DC	3 Pole NO Aux. 1NC 24VDC*	£39.56
MC18N-S-01400AC	3 Pole NO Aux. 1NC 400VAC*	£28.90
MC18N-S-10110AC	3 Pole NO Aux. 1NO 110VAC*	£28.90
MC18N-S-10230AC	3 Pole NO Aux. 1NO 230VAC*	£28.90
MC18N-S-1024AC	3 Pole NO Aux. 1NO 24VAC*	£28.90
MC18N-S-1024DC	3 Pole NO Aux. 1NC 24VDC*	£39.56
MC18N-S-10400AC	3 Pole NO Aux. 1NO 400VAC*	£28.90

* Overload = MCOR-1... or U12/16E...-MC

11kW 22A AC3 Contactor



Coil connection top & bottom
Bifurcated aux. contacts
Easy coil swap



Part Number	Description	Price
MC22N-S-00-40230AC	4 Pole NO 230VAC*	£59.88
MC22N-S-01230AC	3 Pole NO Aux. 1NC 230VAC*	£36.77
MC22N-S-10110AC	3 Pole NO Aux. 1NO 110VAC*	£36.77
MC22N-S-10230AC	3 Pole NO Aux. 1NO 230VAC*	£36.77
MC22N-S-1024AC	3 Pole NO Aux. 1NO 24VAC*	£36.77
MC22N-S-1024DC	3 Pole NO Aux. 1NO 24VDC*	£45.95
MC22N-S-10400AC	3 Pole NO Aux. 1NO 400VAC*	£36.77

* Overload = MCOR-1... or U12/16E...-MC

11kW 24A AC3 Contactor



Coil connection top & bottom
Bifurcated aux. contacts
Easy coil swap



Part Number	Description	Price
MC24-S-00110	3 Pole NO 110VAC*	£42.10
MC24-S-00230	3 Pole NO 230VAC*	£42.10
MC24-S-0024	3 Pole NO 24VAC*	£42.10
MC24-S-00400	3 Pole NO 400VAC*	£42.10
MC24-S-00=24	3 Pole NO 24VDC*	£50.60

* Overload = MCOR-1... or MCOR-2...

15kW 32A AC3 Contactor



Coil connection top & bottom
Bifurcated aux. contacts
Easy coil swap



Part Number	Description	Price
MC32-S-00110	3 Pole NO 110VAC*	£62.34
MC32-S-00230	3 Pole NO 230VAC*	£62.34
MC32-S-0024	3 Pole NO 24VAC*	£62.34
MC32-S-00400	3 Pole NO 400VAC*	£59.60
MC32-S-00=24	3 Pole NO 24VDC*	£65.67

* Overload = MCOR-1... or MCOR-2...

18.5kW 40A AC3 Contactor



Coil connection top & bottom
Bifurcated aux. contacts
Easy coil swap



Part Number	Description	Price
MC40-S-00110	3 Pole NO 110VAC*	£72.27
MC40-S-00230	3 Pole NO 230VAC*	£72.27
MC40-S-0024	3 Pole NO 24VAC*	£72.27
MC40-S-00400	3 Pole NO 400VAC*	£72.27
MC40-S-00=24	3 Pole NO 24VDC*	£79.14

* Overload = MCOR-2...

22kW 50A AC3 Contactor



Coil connection top & bottom
Bifurcated aux. contacts
Easy coil swap



Part Number	Description	Price
MC50-S-00110	3 Pole NO 110VAC*	£96.67
MC50-S-00230	3 Pole NO 230VAC*	£96.67
MC50-S-0024	3 Pole NO 24VAC*	£96.67
MC50-S-00=24	3 Pole NO 24VDC*	£103.00

* Overload = MCOR-3...

30kW 62A AC3 Contactor



Coil connection top & bottom
Bifurcated aux. contacts
Easy coil swap



Part Number	Description	Price
MC62-S-00110	3 Pole NO 110VAC*	£119.78
MC62-S-00230	3 Pole NO 230VAC*	£119.78
MC62-S-0024	3 Pole NO 24VAC*	£119.78
MC62-S-00400	3 Pole NO 400VAC*	£114.51
MC62-S-00=24	3 Pole NO 24VDC*	£125.40

* Overload = MCOR-3...

37kW 74A AC3 Contactor



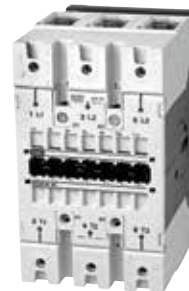
Coil connection top & bottom
Bifurcated aux. contacts
Easy coil swap



Part Number	Description	Price
MC74-S-00110	3 Pole NO 110VAC*	£164.36
MC74-S-00230	3 Pole NO 230VAC*	£164.36
MC74-S-00400	3 Pole NO 400VAC*	£157.12

* Overload = MCOR-3...

45kW 90A AC3 Contactor



Coil connection top & bottom
Bifurcated aux. contacts
Easy coil swap



Part Number	Description	Price
MC90-S-00110	3 Pole NO 110-120V 50/60Hz 110VAC*	£189.81
MC90-S-00230	3 Pole NO 220-240V 50/60Hz 220VDC*	£189.81

* Overload = MCOR-4...

55kW 115A AC3 Contactor



Coil connection top & bottom
Bifurcated aux. contacts
Easy coil swap



Part Number	Description	Price
MC115-S-00110	3 Pole NO 110-120V 50/60Hz 100VDC*	£222.28
MC115-S-00230	3 Pole NO 220-240V 50/60Hz 220VDC*	£222.28

* Overload = MCOR-4...

Contact Blocks & Interlocks



Part Number	Description	Price
MBA-11	Aux. Contact Block for MB Contactors 1NO/1NC	£6.62
MBA-22	Aux. Contact Block for MB09 / 12... 2NO/2NC	£11.81
MCA01	Aux. Contact Block for MC10 to 115 1NC Top Mount	£3.41
MCA01U	Aux. Contact Block for MC10 to 115 1NC Late Break	£4.10
MCA10	Aux. Contact Block for MC10 to 115 1NO Top Mount	£3.41
MCA10U	Aux. Contact Block for MC10 to 115 1NO Late Break	£4.10
MCAA11	Aux. Contact Block for MC151 to 316 1NO/1NC Side	£19.32
MCAH01	High Switching Capacity 25A AC1 1NC Top Mount	£3.41
MCAH10	High Switching Capacity 25A AC1 1NO Top Mount	£3.41
MCAS-11	Aux. Contact Block for MC24 to 115 1NO/1NC Side	£8.57
MC-I-W	Interlock for MC(D)10 to MC(D)40 Contactors	£3.19
MC-I-X	Interlock for MC50 to MC74 Contactors	£6.80
MC-I-Y	Interlock for MC90 & MC115 Contactor	£6.43

Capacitor Switching Contactor



For reactive or non-reactive capacitor banks



Part Number	Description	Price
MC18N-K-10400AC	12.5kVar 1NO Aux. 400VAC	£52.46
MC32-K-00110	25kVar 110VAC	£87.30
MC32-K-00230	25kVar 230VAC	£87.30
MC32-K-00400	25kVar 400VAC	£87.30
MC50-K-00400	33.3kVar 400VAC	£115.84
MC62-K-00110	50kVar 110VAC	£154.93
MC62-K-00230	50kVar 230VAC	£154.93
MC62-K-00400	50kVar 400VAC	£154.93
MC74-K-00230	75kVar 230VAC	£190.45
MC74-K-00400	75kVar 400VAC	£199.21
MC115-K-00230	100kVar 230VAC 50/60Hz	£249.39

MC10 to MC22 Contactor Coils



Part Number	Description	Price
K10N/4.110	Coil 110-115V 50/60Hz	£10.63
K10N/4.230	Coil 220-240V 50Hz / 230-264V 60Hz	£10.63
K10N/4.24	Coil 24V 50/60Hz	£10.63
K10N/4.400	Coil 380-415V 50Hz / 400-440V 60Hz	£10.63

Thermal Overload Relays

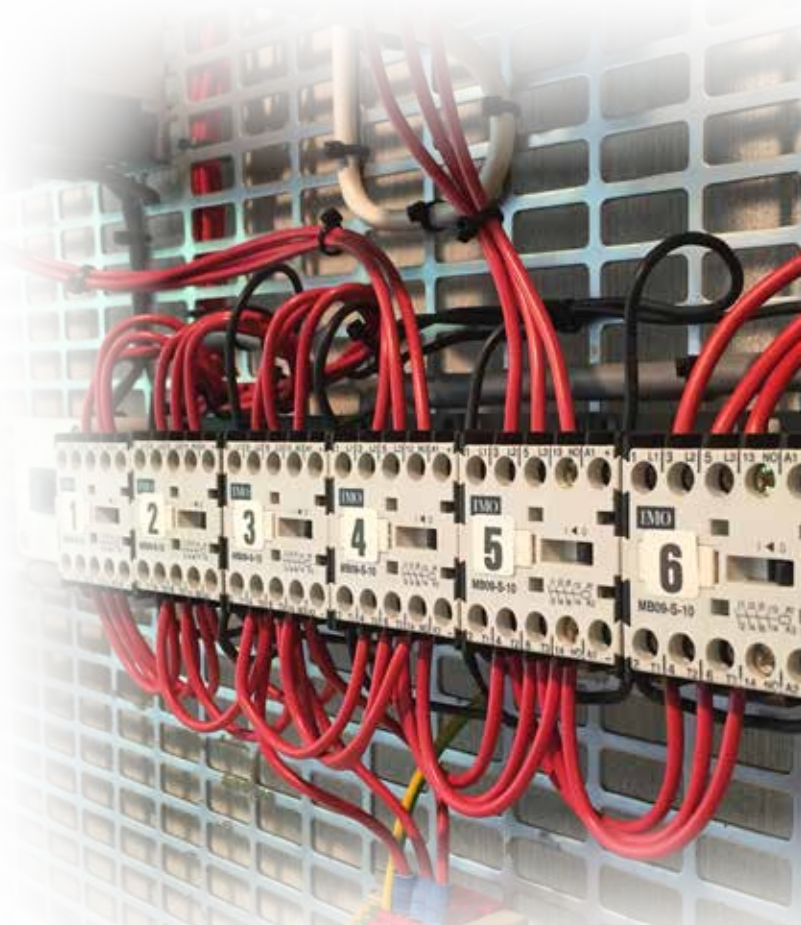


Part Number	Description	Price
U12/16E0.9-MC	Man.Reset for MC10 to MC22 0.6-0.9Amps	£24.79
U12/16E1.2-MC	Man.Reset for MC10 to MC22 0.8-1.2Amps	£24.79
U12/16E1.8-MC	Man.Reset for MC10 to MC22 1.2-1.8Amps	£24.79
U12/16E2.7-MC	Man.Reset for MC10 to MC22 1.8-2.7Amps	£24.79
U12/16E4-MC	Man.Reset for MC10 to MC22 2.7-4Amps	£24.79
U12/16E6-MC	Man.Reset for MC10 to MC22 4-6Amps	£24.79
U12/16E9-MC	Man.Reset for MC10 to MC22 6-9Amps	£27.90
U12/16E11-MC	Man.Reset for MC10 to MC22 8-11Amps	£27.90
U12/16E14-MC	Man.Reset for MC10 to MC22 10-14Amps	£27.90
U12/16E18-MC	Man.Reset for MC10 to MC22 13-18Amps	£30.70
U12/16E23-MC	Man.Reset for MC10 to MC22 17-23Amps	£32.50
U12/16E30-MC	Man.Reset for MC10 to MC22 22-30Amps	£51.07
MCOR-1-0.18	Overload for MC10 to MC22 0.12-0.18Amps	£27.27
MCOR-1-0.27	Overload for MC10 to MC22 0.18-0.27Amps	£27.27
MCOR-1-0.4	Overload for MC10 to MC22 0.27-0.4Amps	£27.27
MCOR-1-0.6	Overload for MC10 to MC22 0.4-0.6Amps	£27.27
MCOR-1-0.9	Overload for MC10 to MC22 0.6-0.9Amps	£27.27
MCOR-1-1.2	Overload for MC10 to MC22 0.8-1.2Amps	£27.27
MCOR-1-1.8	Overload for MC10 to MC22 1.2-1.8Amps	£27.27
MCOR-1-2.7	Overload for MC10 to MC22 1.8-2.7Amps	£27.27
MCOR-1-4	Overload for MC10 to MC22 2.7-4Amps	£27.27
MCOR-1-6	Overload for MC10 to MC22 4-6Amps	£27.27
MCOR-1-9	Overload for MC10 to MC22 6-9Amps	£30.69
MCOR-1-11	Overload for MC10 to MC22 8-11Amps	£30.69
MCOR-1-14	Overload for MC10 to MC22 10-14Amps	£30.69
MCOR-1-18	Overload for MC10 to MC22 13-18Amps	£33.77
MCOR-1-24	Overload for MC10 to MC22 17-24Amps	£35.73
MCOR-1-32	Overload for MC10 to MC22 23-32Amps	£55.19
MCOR-2-14	Overload for MC24 to MC40 10-14Amps	£61.96
MCOR-2-20	Overload for MC24 to MC40 14-20Amps	£61.96
MCOR-2-28	Overload for MC24 to MC40 20-28Amps	£61.96
MCOR-2-42	Overload for MC24 to MC40 28-42Amps	£61.96
MCOR-3-28	Overload for MC50 to MC74 20-28Amps	£100.24
MCOR-3-42	Overload for MC50 to MC74 28-42Amps	£100.24
MCOR-3-52	Overload for MC50 to MC74 40-52Amps	£100.24
MCOR-3-65	Overload for MC50 to MC74 52-65Amps	£100.24
MCOR-3-74	Overload for MC50 to MC74 60-74Amps	£100.24
MCOR-4-120	Overload for MC90 to MC115 80-120Amps	£130.70

Accessories



Part Number	Description	Price
MA-P1039	MA Snap-on Adaptor for 35mm DIN Rail	£1.58
MCNW-VB10	Reversing Starter Connector for MCN10/18	£7.72
MCY-C-40	Star Delta Load Circuit Connection Links MC24-40	£10.91
U12SM-MC	DIN Rail Mounting Kit for U12/16E...-MC Overloads	£8.35
U3/32SM	Overload Terminal Set for MCOR-1... Overloads	£6.06
U3/42G	DIN Mounting Bracket for MCOR-2	£6.78
Y9A415	Timer for Star-Delta Starters 1-20s 110-415VAC	£58.63
Y9A60	Timer for Star-Delta Starters 1-20s 24-60VAC	£58.63



MB09-S-10 - In Series



iStart Enclosed Starters Metal & plastic enclosed DOL and Star Delta Starters

DOL Starter IP55



Metal Enclosure



Part Number	Description	Price
DOLI-7.5230*	DOL & Isolator 7.5kW 230VAC	£137.22
DOLI-7.5400*	DOL & Isolator 7.5kW 400VAC	£137.22

* Overload = U12/16E..-MC

DOL Starter IP65



Plastic Enclosure



Part Number	Description	Price
DOL10230*	DOL 4kW 10A Start & Stop 230VAC	£48.31
DOL10400*	DOL 4kW 10A Start & Stop 400VAC	£48.31
DOL10110*	DOL 4kW 10A Start & Stop 110VAC	£48.31
DOL18230*	DOL 7.5kW 10A Start & Stop 230VAC	£58.63
DOL18400*	DOL 7.5kW 10A Start & Stop 400VAC	£58.63
DOL18110*	DOL 7.5kW 10A Start & Stop 110VAC	£58.63

* Overload = U12/16E..-MC

Star Delta Starter IP55



Metal Enclosure



Part Number	Description	Price
SDSI-7.5230*	Star Delta 7.5kW 16A & Isolator 230VAC	£309.89
SDSI-7.5400*	Star Delta 7.5kW 16A & Isolator 400VAC	£309.89
SDSI-15230*	Star Delta 15kW 30A & Isolator 230VAC	£322.47
SDSI-15400*	Star Delta 15kW 30A & Isolator 400VAC	£322.47

* Overload = U12/16E..-MC



DOLI-7.5230 - Internal Components

Motor Circuit Breakers C4 & Accessories

C4/32R with Rotary Switch



Manufactured in accordance with IEC 60947-1, IEC 60947-2 & IEC 60947-4-1



Part Number	Description	Price
C4/32R-0.16	Setting Range 0.1-0.16A IRC* 2.1A	£45.45
C4/32R-0.25	Setting Range 0.16-0.25A IRC* 3.3A	£45.45
C4/32R-0.4	Setting Range 0.25-0.4A IRC* 5.2A	£45.45
C4/32R-0.63	Setting Range 0.4-0.63A IRC* 8.2A	£45.45
C4/32R-1	Setting Range 0.63-1.0A IRC* 13A	£45.45
C4/32R-1.6	Setting Range 1.0-1.6A IRC* 20.8A	£45.45
C4/32R-2.5	Setting Range 1.6-2.5A IRC* 32.5A	£46.75
C4/32R-4	Setting Range 2.5-4.0A IRC* 52A	£46.75
C4/32R-6	Setting Range 4.0-6.0A IRC* 78A	£46.75
C4/32R-8	Setting Range 5.0-8.0A IRC* 104A	£46.75
C4/32R-10	Setting Range 6.0-10.0A IRC* 130A	£51.98
C4/32R-13	Setting Range 9.0-13.0A IRC* 169A	£51.98
C4/32R-17	Setting Range 11.0-17.0A IRC* 221A	£51.98
C4/32R-22	Setting Range 14.0-22.0A IRC* 286A	£57.71
C4/32R-26	Setting Range 18.0-26.0A IRC* 338A	£65.43
C4/32R-32	Setting Range 22.0-32.0A IRC* 416A	£65.43

*IRC = Instantaneous Release Current

C4/32T with Toggle Switch



Manufactured in accordance with IEC 60947-1, IEC 60947-2 & IEC 60947-4-1



Part Number	Description	Price
C4/32T-0.25	Setting Range 0.16-0.25A IRC* 3.3A	£36.66
C4/32T-0.63	Setting Range 0.4-0.63A IRC* 8.2A	£36.66
C4/32T-1	Setting Range 0.63-1.0A IRC* 13A	£39.22
C4/32T-1.6	Setting Range 1.0-1.6A IRC* 20.8A	£41.59
C4/32T-2.5	Setting Range 1.6-2.5A IRC* 32.5A	£43.57
C4/32T-4	Setting Range 2.5-4.0A IRC* 52A	£43.57
C4/32T-6	Setting Range 4.0-6.0A IRC* 78A	£43.57
C4/32T-8	Setting Range 5.0-8.0A IRC* 104A	£43.57
C4/32T-10	Setting Range 6.0-10.0A IRC* 130A	£48.70
C4/32T-13	Setting Range 9.0-13.0A IRC* 169A	£48.70
C4/32T-17	Setting Range 11.0-17.0A IRC* 221A	£48.70
C4/32T-22	Setting Range 14.0-22.0A IRC* 286A	£48.70
C4/32T-26	Setting Range 18.0-26.0A IRC* 338A	£48.70
C4/32T-32	Setting Range 22.0-32.0A IRC* 416A	£46.56

*IRC = Instantaneous Release Current

C4/63R & 100R with Rotary Switch



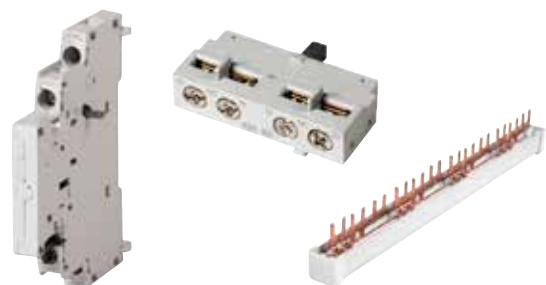
Manufactured in accordance with IEC 60947-1, IEC 60947-2 & IEC 60947-4-1



Part Number	Description	Price
C4/63R-40	Setting Range 28.0-40.0A IRC* 520A	£119.48
C4/63R-50	Setting Range 34.0-50.0A IRC* 650A	£119.48
C4/63R-63	Setting Range 45.0-63.0A IRC* 819A	£119.48
C4/100R-63	Setting Range 45.0-63.0A IRC* 819A	£159.30
C4/100R-75	Setting Range 55.0-75.0A IRC* 975A	£175.03
C4/100R-90	Setting Range 70.0-90.0A IRC* 1170A	£187.62
C4/100R-100	Setting Range 80.0-100.0A IRC* 1300A	£207.54

*IRC = Instantaneous Release Current

Accessories



Part Number	Description	Price
C432S2	3 Phase Busbar Fork Type 63A 2 Way	£6.83
C432S3	3 Phase Busbar Fork Type 63A 3 Way	£8.28
C432S4	3 Phase Busbar Fork Type 63A 4 Way	£9.31
C432S5	3 Phase Busbar Fork Type 63A 5 Way	£10.49
C432VK3	Link Module Connect to MC10 Contactor	£5.12
C4HS11	Aux Contact Black Side Mount	£7.02

Cam Switches & Accessories

Off-On, Step, Changeover with Off, Changeover without Off Switches

Off-On Cam Switch 20A



Manufactured in accordance with IEC 60947-3

IP65 Rated



Part Number	Description	Price
CS20A-A1	1 Pole 2 Position with Legend Plate	£5.18
CS20A-A2	2 Pole 2 Position with Legend Plate	£6.38
CS20A-A4	4 Pole 2 Position with Legend Plate	£8.83
CS20A-A8	8 Pole 2 Position with Legend Plate	£17.22

Changeover Switch with Off 20A



Manufactured in accordance with IEC 60947-3

IP65 Rated



Part Number	Description	Price
CS20A-U1	1 Pole 3 Position with Legend Plate	£6.38
CS20A-U2	2 Pole 3 Position with Legend Plate	£8.83
CS20A-U3	3 Pole 3 Position with Legend Plate	£13.11
CS20A-U4	4 Pole 3 Position with Legend Plate	£17.22
CS20A-U6	6 Pole 3 Position with Legend Plate	£25.31

Step Cam Switch 20A



Manufactured in accordance with IEC 60947-3

IP65 Rated



Part Number	Description	Price
CS20A-ST31	1 Pole 3 Position with Legend Plate	£7.88
CS20A-ST33	3 Pole 3 Position with Legend Plate	£22.18
CS20A-ST42	2 Pole 4 Position with Legend Plate	£17.22
CS20A-ST45	5 Pole 4 Position with Legend Plate	£81.40
CS20A-ST51	1 Pole 5 Position with Legend Plate	£10.71
CS20A-ST52	2 Pole 5 Position with Legend Plate	£22.17
CS20A-ST61	1 Pole 6 Position with Legend Plate	£12.53

Changeover Switch without Off 20A



Manufactured in accordance with IEC 60947-3

IP65 Rated



Part Number	Description	Price
CS20A-W2	2 Pole 2 Position with Legend Plate	£8.83
CS20A-W3	3 Pole 2 Position with Legend Plate	£13.11
CS20A-W4	4 Pole 2 Position with Legend Plate	£17.22
CS20A-W8	8 Pole 2 Position with Legend Plate	£32.70

Accessories



Part Number	Description	Price
RBK2	Cam Switch Handle Round Bezel Key	£13.74
RB2	Cam Switch Handle Toggle Round Bezel	£4.59
SPK2	Cam Switch Handle Escutcheon Plate Key	£16.32
SP2	Cam Switch Handle Toggle Escutcheon Plate	£6.91



CS20A-U2 - Changeover Switch

FOOT SWITCHES

IMO Foot Switches are made from shock proof, thermoplastic housing with either IP53 or IP65 protection. The range is completed by various auxiliary devices and 13 different contact blocks.



Unshrouded Foot Switches



Shrouded Foot Switches



Contact Blocks



Accessories



Unshrouded & Shrouded Foot Switches & Accessories

Including Joining Kits, Carrying Rods & Stabilizing Plates

UFS Unshrouded Foot Switches



3xPG13.5 Gland Entries
with all models



Part Number	Description	Price
UFSBK0720	With Pedal Lock 2NC Slow Action GRP	£32.55
UFSBL0101	Without Safety Lever NO+NC Snap Action Black Cover GRP	£32.40
UFSBL1101	Without Safety Lever NO+NC Snap Action Black Cover Gold Plated contacts GRP	£35.72
UFSRE0101	Without Safety Lever NO+NC Snap Action Red Cover GRP	£32.01
UFSRE0321	With Pedal Actuator Lock NO+NC Slow Action BBM Red Cover GRP	£28.30
UFSRE0701	Without Safety Lever 2NC Slow Action Red Cover	£32.01

SFS Shrouded Foot Switches

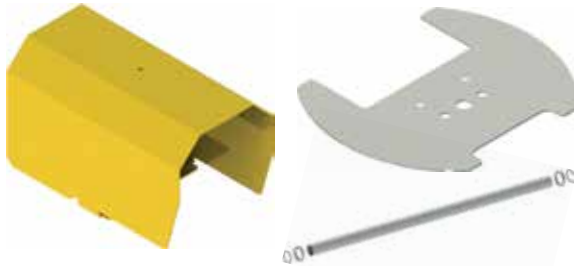


3xPG13.5 Gland Entries
with all models
M20 Option



Part Number	Description	Price
SFSYE0101	Switch without Safety Lever NO+NC Snap Action GRP IP65	£38.35
SFSYE0110-B	Switch with Safety Lever NO+NC Snap Action GRP VFKIT31 Hole	£38.26
SFSYE0111	Switch with Safety Lever NO+NC Snap Action GRP IP65	£38.73
SFSYE0111-B	Switch with Safety Lever NO+NC Snap Action GRP VFKIT31 Hole IP65	£40.74
SFSYE0121	Switch with Safety Lever 2x(NO+NC) Snap Action GRP IP65	£41.12
SFSYE0311	Switch without Safety Lever NO+NC Slow Action GRP IP65	£38.01
SFSYE1411-S1	Switch with Safety Lever 2NO Snap Action GRP IP65	£46.83
SFSYE2041	Switch with Safety Lever Two Stage 2x(NO+NC) Snap Action GRP IP65	£43.38

Accessories



Part Number	Description	Price
AC-KIT20	Kit for Joining 2 Foot Switches	£5.34
AC-KIT22	600mm Carrying Rod (use with AC-KIT20)	£5.95
AC-KIT29	740mm Aluminium Rod (use with AC-KIT33)	£19.95
AC-KIT30	Kit for Joining 2 Foot Switches (use with AC-KIT29)	£6.32
AC-KIT31	660mm Carrying Rod (use with AC-KIT32/33)	£17.73
AC-KIT32	Emergency Stop Station (use with AC-KIT29/31)	£27.36
AC-KIT33	Emergency Stop Station (use with AC-KIT29)	£30.74
AC-KIT40	400mm Double Carrying Rod (use with 3 Foot Switches joined by 2x AC-KIT20)	£9.89
AC-KIT50	Metal Handle Kit (use with AC-KIT29/31)	£10.15
AC-KIT60	Stabilizing Plate	£13.04
AC-KIT61	Stabilizing Plate for 2x Joined Foot Switches	£20.48
AC-KIT71	Metal Shroud	£29.17

Contact Blocks



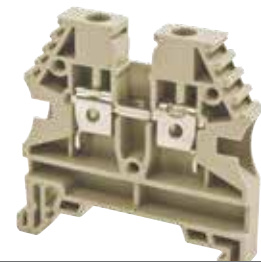
Glass Reinforced Polymer Self-Extinguishing Shock Proof Thermoplastic Housing to be used with UFS & SFS Foot Switches



Part Number	Description	Price
AC-C501	1NO+1NC Snap Action	£9.21
AC-C501-G	1NO+1NC Snap Action (Gold Plated Contact)	£13.41
AC-C601	1NO+1NC Slow Action	£7.63
AC-C1001	2NO Slow Action	£8.81
AC-C1501	2NO Slow Action Shifted	£8.81

DIN RAIL TERMINALS

IMO terminals are made of carefully selected standard materials. Insulating materials, clamping metals and conducting metals are subjected to strict quality control as required by stringent international standards.



Feed-Through **Screw Clamp** Terminals



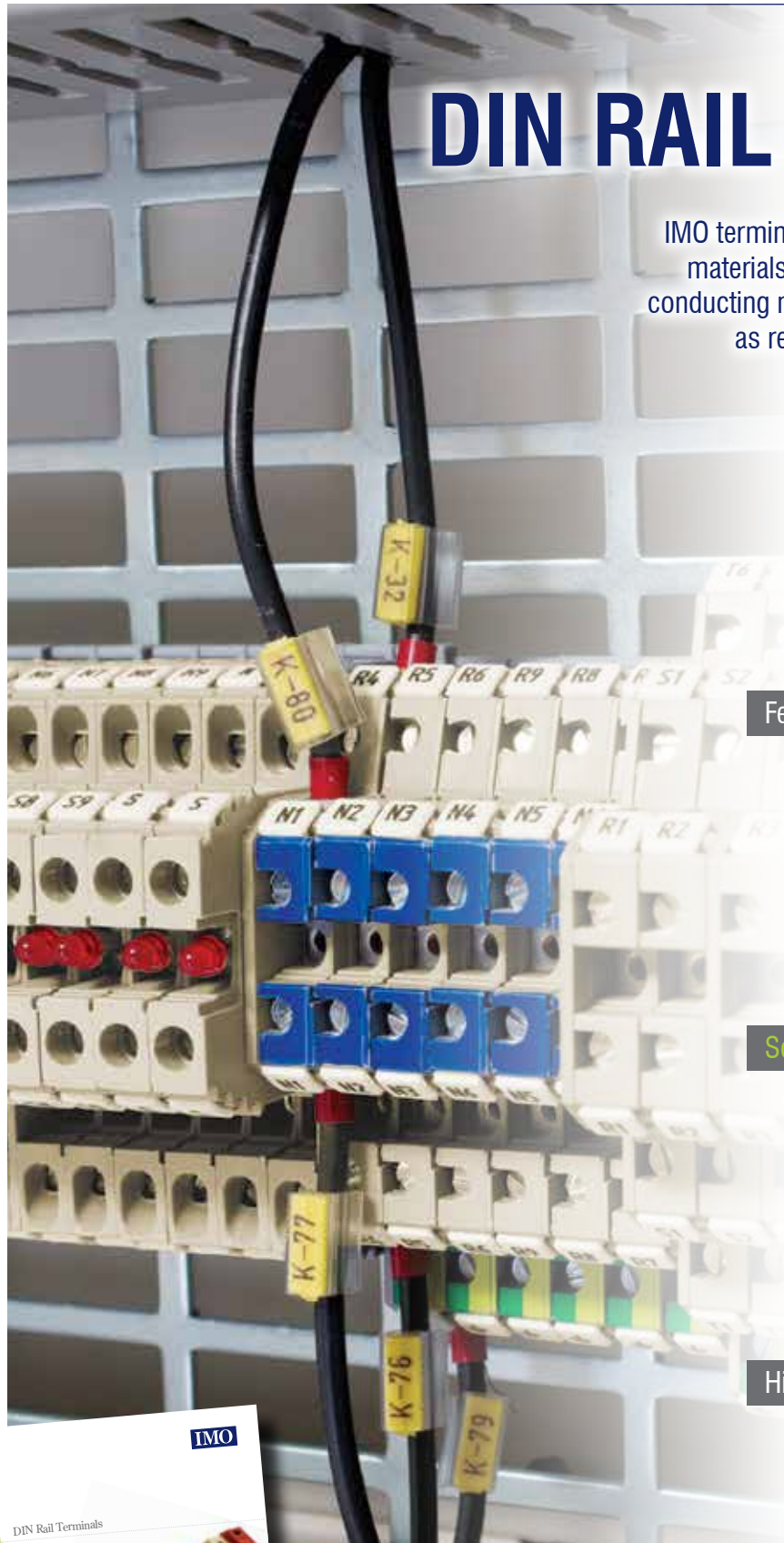
Screw Clamp Earth Terminals



High-Insulation **Screw Clamp** Terminals



High-Current **Bolt-On** Terminals



For the entire range of **DIN Rail Terminals**, go to www.imopc.com and download the catalogue

ER Series Screw Clamp Terminals & Accessories

Including End Plates, End Brackets, Cross Connections, Markers, DIN Rail & Busbars

Feed-Through Terminals



Available Colours
(Beige as standard)



Part Number	Description	Price/100
ER2.5	2.5mm ² 750V 24 Amp (Pack size 100pcs)	£53.61
ER4	4mm ² 750V 32 Amp (Pack size 100pcs)	£55.47
ER6	6mm ² 630V 41 Amp (Pack size 100pcs)	£74.24
ER10	10mm ² 630V 57 Amp (Pack size 100pcs)	£85.02
ER16	16mm ² 750V 76 Amp (Pack size 50pcs)	£127.57
ER16P	16mm ² 750V 76 Amp (Pack size 50pcs)	£135.55
ER25P	25mm ² 750V 101 Amp (Pack size 50pcs)	£171.74
ER35P	35mm ² 750V 125 Amp (Pack size 50pcs)	£249.59

NOTE: When ordering, please specify the colour required. i.e. ER2.5BLUE
ER16P, ER25P & ER35P can be used on either standard DIN Rail or G-Rail



High-Insulation Terminals



Available Colours
(Beige as standard)



Part Number	Description	Price/100
ER50	50mm ² 1000V 150 Amp (Pack size 25pcs)	£444.91
ER70	70mm ² 1000V 192 Amp (Pack size 10pcs)	£547.46
ER95	95mm ² 1000V 232 Amp (Pack size 6pcs)	£1492.65
ER150	150mm ² 1000V 309 Amp (Pack size 4pcs)	£2140.00
ER240	240mm ² 1000V 415 Amp (Pack size 4pcs)	£3920.84



High Insulation Terminals for PV Applications also available

DIN Rail Terminal brochure available at www.imopc.com

Earth Terminals



Green/Yellow only



Part Number	Description	Price/100
ERPE2.5P	2.5mm ² (Pack size 50pcs)	£155.40
ERPE2.5/4	4mm ² (Pack size 50pcs)	£170.10
ERPE6/10	6mm ² (Pack size 25pcs)	£225.56
ERPE16P	16mm ² (Pack size 25pcs)	£324.10
ERPE35P	35mm ² (Pack size 1pc)	£351.27

High-Current Terminals



Available Colours
(Beige as standard)

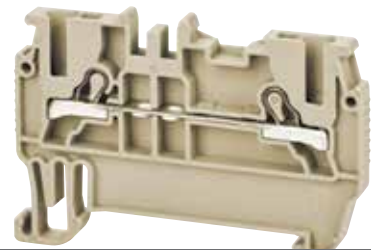


Part Number	Description	Price/100
ERB95	95mm ² 1000V 232 Amp (Pack size 4pcs)	£1544.72
ERB150	150mm ² 1000V 309 Amp (Pack size 4pcs)	£2282.60
ERB240	240mm ² 1000V 415 Amp (Pack size 4pcs)	£2928.07

NOTE: All DIN Rail Terminals listed are supplied in pack sizes of 100 pieces

SAVE TIME WITH PUSH FIT

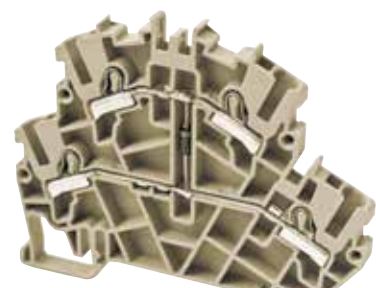
IMO Push Fit terminals are designed to meet vibration frequencies of up to 2kHz at a displacement of 20mm and an acceleration of 20g, plus they will also save you up to 75% wiring time compared to screw clamp terminals



Push Fit Terminals



Push Fit Earth Terminals



Double Deck Push Fit Terminals



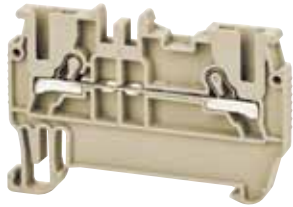
Fuse Push Fit Terminals



PF Series Push Fit Terminals & Accessories

Including End Plates, End Brackets, Cross Connections, Markers, DIN Rail & Busbars

Push Fit Terminals



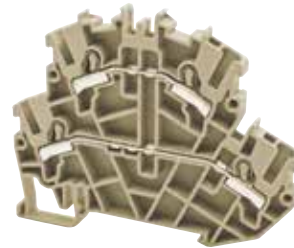
Available Colours
(Beige as standard)



Part Number	Description	Price
PF1.5	1.5mm ² 800V 17.5 Amp (Pack size 100pcs)	£43.72
PF2.5	2.5mm ² 800V 24 Amp (Pack size 100pcs)	£56.58
PF4	4mm ² 800V 32 Amp (Pack size 100pcs)	£62.68
PF6	6mm ² 800V 41 Amp (Pack size 100pcs)	£107.59
PF10	10mm ² 800V 57 Amp (Pack size 50pcs)	£151.22

NOTE: When ordering, please specify the colour required. i.e. PF2.5BLUE

Double Deck Push Fit Terminals



Available Colours
(Beige as standard)



Part Number	Description	Price
PFD2.5	2.5mm ² 500V 24 Amp (Pack size 40pcs)	£146.43
PFD2.5V	2.5mm ² 500V 24 Amp (Pack size 40pcs)	£244.35
PFD2.5LD-24VDC	2.5mm ² 24VDC 24 Amp (Pack size 40pcs)	£517.88
PFD2.5LD-220VAC	2.5mm ² 220V 24 Amp (Pack size 40pcs)	£517.88
PFD2.5D	2.5mm ² 500V 24 Amp (Pack size 40pcs)	£510.50
PFD2.5DR	2.5mm ² 500V 24 Amp (Pack size 40pcs)	£510.50



PUSH FIT: On average, the IMO Push Fit terminal offers up to 75% saving on wiring time when compared to a screw clamp connection.

Fuse Push Fit Terminals



Available Colours
(Beige as standard)



Part Number	Description	Price/100
PFF4	4mm ² 500V 10 Amp (Pack size 15pcs)	£336.60
PFF4LD520-24VDC	4mm ² 24VDC 10 Amp (Pack size 15pcs)	£423.25
PFF4LD520-220VAC	4mm ² 220V 10 Amp (Pack size 15pcs)	£423.25
PFF4LD525-24VDC	4mm ² 24VDC 10 Amp (Pack size 15pcs)	£423.25
PFF4LD525-220VAC	4mm ² 220V 10 Amp (Pack size 15pcs)	£423.25
PFF3	4mm ² 500V 10 Amp (Pack size 15pcs)	£341.69
PFF3LD-24VDC	4mm ² 24VDC 10 Amp (Pack size 15pcs)	£375.96
PFF3LD-220VAC	4mm ² 220V 10 Amp (Pack size 15pcs)	£375.96

Push Fit Earth Terminals



Green/Yellow only



Part Number	Description	Price
PFPE1.5P	1.5mm ² (Pack size 80pcs)	£157.83
PFPE2.5P	2.5mm ² (Pack size 50pcs)	£170.93
PFPE4P	4mm ² (Pack size 50pcs)	£179.23
PFPE6P	6mm ² (Pack size 60pcs)	£248.11
PFPE10P	10mm ² (Pack size 25pcs)	£299.20

DIN Rail Terminal Accessories

Mounting Rails, Brackets, Terminal Strips, Busbars, Clamping Yokes & Marking

End Brackets



Supplied in Beige As Standard
(Other Colours Available)
Sold in Pack of 100 Pieces
(ES6 Sold in Pack of 50 Pieces)



Part Number	Description	Price/100
ES1	Screw Type for MR35 Rail (Beige)	£29.05
ES3	Screw Type for MR32 & MR35 Rail (Beige)	£39.15
ES4	Screwless Type for MR35 Rail (Beige)	£50.60
ES6	Screw Type for MR35 Rail (Beige)	£108.65

End Plates

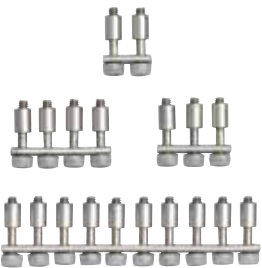


Supplied in Beige As Standard
(Other Colours Available)
Sold in Pack of 100 Pieces
(EP50 Sold in Pack of 10 Pieces)



Part Number	Description	Price
EP2.5-10	Polyamide 66 For Use With ER2.5 - ER10	£23.95
EP16	Polyamide 66 For Use With ER16	£32.74
EP25P	Polyamide 66 For Use With ER25P	£37.91
EP50	Polyamide 66 For Use With ER50 - ER240	£40.45

Cross Connections



Available in 2, 3, 4 & 10
Configurations

Sold in Pack of 5 Pieces



Part Number	Description	Price/100
CC2.5/10*	For Use With ER2.5	£195.65
CC4/10*	For Use With ER4	£249.50
CC6/10*	For Use With ER6	£357.94
CC10/10*	For Use With ER10	£357.94
CC16/10*	For Use With ER16, ER16P & ER25	£330.47
CC35/10*	For Use With ER35	£279.11

* Available in 2, 3, 4 & 10 configurations

NOTE: Prices quoted are based on 10 configuration and can be broken down into virtually any configuration.

Warning Labels & Group Marking



Sold in Pack of 25 Pieces
(GMBEIGE Sold in Pack of
50 Pieces)

Part Number	Description	Price/100
WL1	Warning Label With Symbol (Yellow)	£26.04
WL2	Warning Label Without Symbol (Yellow)	£26.04
WL3	Warning Label With Symbol (White)	£33.67
GMBEIGE	Tag Carrier For ER Range 1xWhite Label	£24.33
GM2	Tag Carrier For ER Range 4xMT5 Markers	£36.32

DIN Rail



Part Number	Description	Price
DINRAIL1M-UNSLOT	1m Unslotted Electrolytic Zinc Coated	£1.85
DINRAIL1M-SLOT	1m Slotted Electrolytic Zinc Coated	£1.96
DINRAIL2M-UNSLOT	2m Unslotted Electrolytic Zinc Coated	£3.07
DINRAIL1MG-SLOT	1m Slotted Galvanized	£1.96
DINRAIL2MG-SLOT	2m Slotted Galvanized	£3.18

MT5 Marking Tags



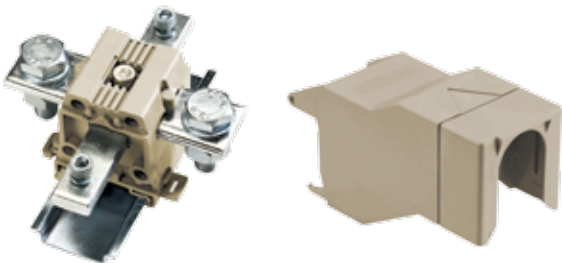
MT5 markers can be used with the whole DIN Terminal range.

Sold in Pack of 500 Pieces

Part Number	Description	Price/100
MT5	Unprinted Tags 5x5mm	£1.96
MT5-1-50	Pre-Printed Tags 1-50 5x5mm	£2.40
MT5-1-100	Pre-Printed Tags 1-100 5x5mm	£2.40

For all DIN Rail Terminal marking options and solutions including our Thermal Marker Printer, please visit www.imopc.com.

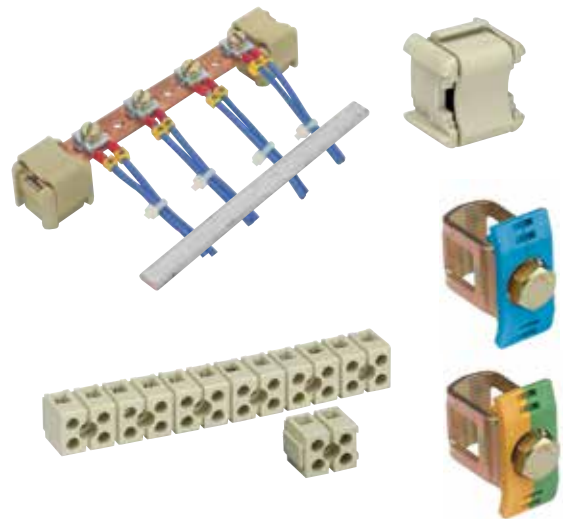
High Current Accessories



Part Number	Description	Price
IC95	Isolation Cover for ERB95 (Pack of 4)	£5.25
IC150	Isolation Cover for ERB150 (Pack of 4)	£5.30
IC240	Isolation Cover for ERB240 (Pack of 4)	£6.75
CCB95/2*	Cross Connector for ERB95 2-Way (Pack of 5)	£8.39
CCB150/2*	Cross Connector for ERB150 2-Way (Pack of 5)	£15.32
CCB240/2*	Cross Connector for ERB240 2-Way (Pack of 5)	£21.13

* Available in 2-Way, 3-Way and 4-Way e.g. CCB95/4

Accessories



For a complete range of DIN Rail Terminal accessories, including Busbars, Terminal Strips and Clamping Yokes, refer to www.imopc.com or contact IMO for more information and pricing.

IMO STARLINE CATALOGUE 2017-18

Industrial Power Relays, Slimline Plug-In Power Relays

High Capacity Relays 1PNO



Solder Lug or Push On
1 Pole Normally Open



Part Number	Description	Price
HY1A112DC	30 Amps 12VDC Coil Resistance 75Ω	£7.20
HY1A124AC	30 Amps 24VAC Coil Resistance 300Ω	£7.20
HY1A124DC	30 Amps 24VDC Coil Resistance 300Ω	£7.20
HY1A1230AC	30 Amps 230VAC Coil Resistance 20800Ω	£8.91

High Capacity Relays 2PNO



Solder Lug or Push On
2 Pole Normally Open



Part Number	Description	Price
HY2A112DC	25 Amps 12VDC Coil Resistance 75Ω	£9.03
HY2A124AC	25 Amps 24VAC Coil Resistance 300Ω	£9.03
HY2A124DC	25 Amps 24VDC Coil Resistance 300Ω	£9.03
HY2A1230AC	25 Amps 230VAC Coil Resistance 20800Ω	£10.32

QYE Relays 2PCO



Plug-In or PCB Mount
2 Pole Changeover



Part Number	Description	Price
QYE21XN120AC	10 Amps 120VAC up to 1.8VA LED Plug-In	£5.98
QYE21XN12AC	10 Amps 12VDC up to 1.8VA LED Plug-In	£5.98
QYE21XN12DC	10 Amps 12VDC up to 1.1W LED Plug-In	£5.98
QYE21XN240AC	10 Amps 240VAC up to 1.8VA LED Plug-In	£7.03
QYE21XN24AC	10 Amps 24VAC up to 1.8VA LED Plug-In	£5.71
QYE21XN24DC	10 Amps 24VDC up to 1.1W LED Plug-In	£5.98
QYE21XX120AC	10 Amps 120VAC up to 1.8VA PCB Mount	£5.55
QYE21XX12DC	10 Amps 12VDC up to 1.1W Plug-In	£5.55
QYE21XX240AC	10 Amps 240VAC up to 1.8VA PCB Mount	£6.40
QYE21XX24AC	10 Amps 24VAC up to 1.8VA PCB Mount	£5.55
QYE21XX24DC	10 Amps 24VDC up to 1.1W Plug-In	£5.55
QYE21XF240AC	10 Amps 240VAC up to 1.8VA Plug-In	£6.40
QYE21XF24DC	10 Amps 24VDC up to 1.1W Plug-In	£5.55
QYE22XX12DC	10 Amps 12VDC up to 1.1W PCB Mount	£5.55
QYE22XX24DC	10 Amps 24VDC up to 1.1W PCB Mount	£5.55

Slimline Plug-In Power Relays



6A Sealed Power Relays
Compatible with SRSI Sockets



Part Number	Description	Price
ETS-1AN-SL-12VDC	6 Amps SPNO 12VDC AgNi	£1.68
ETS-1AN-SL-24VDC	6 Amps SPNO 24VDC AgNi	£1.68
ETS-1AN-SL-60VDC	6 Amps SPNO 60VDC AgNi	£3.59
ETS-1CN-SL-5VDC	6 Amps SPCO 5VDC AgNi	£1.89
ETS-1CN-SL-6VDC	6 Amps SPCO 6VDC AgNi	£1.89
ETS-1CN-SL-9VDC	6 Amps SPCO 9VDC AgNi	£1.89
ETS-1CN-SL-12VDC	6 Amps SPCO 12VDC AgNi	£1.89
ETS-1CN-SL-24VDC	6 Amps SPCO 24VDC AgNi	£1.89
ETS-1CN-SL-48VDC	6 Amps SPCO 48VDC AgNi	£3.55
ETS-1CN-SL-60VDC	6 Amps SPCO 60VDC AgNi	£3.75

RSE Relays 2PCO 8 Pins



Plug-In Mount
2 Pole Changeover



Part Number	Description	Price
RSE2PN110AC	10 Amps 110VAC 1.5W LED & Man.Test/Latch	£6.99
RSE2PN110DC	10 Amps 110VDC 2.7VA LED & Flag	£7.31
RSE2PN12AC	10 Amps 12VAC 1.5W LED & Flag	£6.99
RSE2PN12DC	10 Amps 12VDC 2.7VA LED & Flag	£6.99
RSE2PN230AC	10 Amps 230VAC 1.5W LED & Man.Test/Latch	£7.31
RSE2PN24AC	10 Amps 24VAC 1.5W LED & Flag	£6.99
RSE2PN24DC	10 Amps 24VDC 2.7VA LED & Man.Test/Latch	£6.99
RSE2PN48DC	10 Amps 48VDC 2.7VA LED & Flag	£7.43

RSE Relays 3PCO 11 Pins



Plug-In Mount
3 Pole Changeover



Part Number	Description	Price
RSE3PN110AC	5 Amps 110VAC 1.5W LED & Flag	£7.77
RSE3PN110DC	5 Amps 110VDC 2.7VA LED & Flag	£8.11
RSE3PN12AC	5 Amps 12VAC 1.5W LED & Flag	£7.77
RSE3PN12DC	10 Amps 12VDC 2.7VA LED & Man.Test/Latch	£7.77
RSE3PN230AC	10 Amps 230VAC 1.5W LED & Man.Test/Latch	£8.11
RSE3PN24AC	5 Amps 24VAC 1.5W LED & Flag	£7.77
RSE3PN24DC	10 Amps 24VDC 2.7VA LED & Man.Test/Latch	£7.77
RSE3PN48DC	5 Amps 48VDC 2.7VA LED & Flag	£8.57

Miniature High Power Relays



PCB Mount



Part Number	Description	Price
SRRHN-1CN-SL-115VAC	SPCO 12 Amps 115VAC Coil Resistance 100Ω	£3.33
SRRHN-2CT-SL-48VDC	DPCO 8 Amps 48VDC Coil Resistance 100Ω	£3.33

HYE Relays Plug-In 2/3/4PCO



Plug-In
2, 3 & 4 Pole Changeover



Part Number	Description	Price
2 Pole Changeover Versions (2PCO)		
HYE21PN120AC	10 Amps 120VAC up to 1.8VA LED & Man.Test/Latch	£3.97
HYE21PN12DC	10 Amps 12VDC up to 1.1W LED & Man.Test/Latch	£3.97
HYE21PN240AC	10 Amps 240VAC up to 1.8VA LED & Man.Test/Latch	£4.04
HYE21PN24AC	10 Amps 24VAC up to 1.8VA LED & Man.Test/Latch	£3.97
HYE21PN24DC	10 Amps 24VDC up to 1.1W LED & Man.Test/Latch	£3.97
HYE21XX12DC	10 Amps 12VDC up to 1.1W	£4.43
HYE21XX240AC	10 Amps 240VAC up to 1.8VA	£4.96
3 Pole Changeover Versions (3PCO)		
HYE31PN230AC	10 Amps 230VAC up to 1.8VA LED & Man.Test/Latch	£5.35
HYE31PN24AC	10 Amps 24VAC up to 1.8VA LED & Man.Test/Latch	£5.14
HYE31PN24DC	10 Amps 24VDC up to 1.1W LED & Man.Test/Latch	£6.58
4 Pole Changeover Versions (4PCO)		
HYE41PN110DC	5 Amps 110VDC up to 1.1W LED & Man.Test/Latch	£5.35
HYE41PN120AC	5 Amps 120VAC up to 1.8VA LED & Man.Test/Latch	£5.16
HYE41PN12AC	5 Amps 12VAC up to 1.8VA LED & Man.Test/Latch	£5.16
HYE41PN12DC	5 Amps 12VDC up to 1.1W LED & Man.Test/Latch	£5.16
HYE41PN240AC	5 Amps 240VAC up to 1.8VA LED & Man.Test/Latch	£5.35
HYE41PN24AC	5 Amps 24VAC up to 1.8VA LED & Man.Test/Latch	£5.16
HYE41PN24DC	5 Amps 24VDC up to 1.1W LED & Man.Test/Latch	£5.16
HYE41PN48AC	5 Amps 48VAC up to 1.8VA LED & Man.Test/Latch	£5.16
HYE41PN48DC	5 Amps 48VDC up to 1.1W LED & Man.Test/Latch	£5.16
HYE41PX12DC	5 Amps 12VDC up to 1.1W Manual Test/Latch	£4.88
HYE41PX240AC	5 Amps 240VAC up to 1.8VA Manual Test/Latch	£5.24
HYE41PX24DC	5 Amps 240VDC up to 1.1W Manual Test/Latch	£4.88
HYE41XX120AC	5 Amps 120VAC up to 1.8VA	£5.16
HYE41XX12DC	5 Amps 12VDC up to 1.1W	£5.16
HYE41XX240AC	5 Amps 240VAC up to 1.8VA	£5.35
HYE41XX24DC	5 Amps 24VDC up to 1.1W	£5.16
HYE41XX48AC	5 Amps 48VAC up to 1.8VA	£5.16
HYE42XX120AC	5 Amps 120VAC up to 1.8VA PCB Mount	£5.16
HYE42XX240AC	5 Amps 240VAC up to 1.8VA PCB Mount	£5.35
HYE42XX24AC	5 Amps 24VAC up to 1.8VA PCB Mount	£4.93
HYE42XX24DC	5 Amps 24VDC up to 1.1W PCB Mount	£5.16

IMO STARLINE CATALOGUE 2017-18

Relay Sockets (Bases) for Power Relays & Plug-In Modules

For HYE Series Power Relays



Part Number	Description	Price
SRNE2-D	For HYE21 Relays T35 DIN/Panel Mount 8 Pins	£2.90
SRNE2-S	For HYE21 Relays T35 DIN/Panel Mount 8 Pins	£2.90
SRPE2-0	For HYE31 Relays PCB Terminal PCB Mount	£1.19
SRNE3-C	For HYE31 Relays T35 DIN/Panel Mount 11 Pins	£2.90
SRNE3-D*	For HYE31 Relays T35 DIN/Panel Mount 11 Pins	£3.01
SRNE4-C	For HYE41 Relays T35 DIN/Panel Mount 14 Pins	£3.38
SRNE4-D	For HYE41 Relays T35 DIN/Panel Mount 14 Pins	£3.27
SRNE4-S	For HYE41 Relays T35 DIN/Panel Mount 14 Pins	£3.27
SRPE4-0	For HYE41 Relays Solder Terminal, Back-Mount	£2.90

* With Module Slot

For RSE Series Power Relays



Part Number	Description	Price
8 Pin Version		
SRPE8*	For RSE2 Relays T35 DIN/Panel Mount	£1.73
SRRE8	For RSE2 Relays T35 DIN/Panel Mount	£2.65
11 Pin Version		
SRPE11*	For RSE3 Relays T35 DIN/Panel Mount	£2.77
SRRE11	For RSE3 Relays T35 DIN/Panel Mount	£3.06
SRRE11-M**	For RSE3 Relays T35 DIN/Panel Mount	£5.00

* No Modules

** For Module RPDM

For QYE Series Power Relays



Part Number	Description	Price
SRHE2-C*	For QYE21 Relays T35 DIN/Panel Mount 8 Pins	£3.62
SRPE2-0*	For QYE21 PCB Terminal PCB Mount	£1.19

* No Modules

For Miniature Power Relays



Part Number	Description	Price
5 Pin Version		
SRSE1-0	For SRRHN Relay PCB Mount	£0.51
SRNE3-S	For SRRHN Relay & Module T35 DIN Single	£2.41
SRNE3-T	For SRRHN Relay & Module T35 DIN Twin	£2.41
8 Pin Version		
SRSE2-0	For SRRHN Relay PCB Mount	£0.62
SRNE5-S	For SRRHN Relay & Module T35 DIN Single	£2.65
SRNE5-T	For SRRHN Relay & Module T35 DIN Twin	£2.41



For the entire range of
IMO Relays,
go to www.imopc.com and
download the catalogue

For Slimline Power Relays



Part Number	Description	Price
SRSI-24AC/DC	For Use With ETS-1AN-SL-24VDC	£4.47
SRSI-24DC	For Use With ETS-1AN-SL-5VDC	£4.47
SRSI-60AC/DC	For Use With ETS-1AN-SL-60VDC	£4.47
SRSI-24DC	For Use With ETS-1AN-SL-6VDC	£4.47
SRSI-24AC/DC	For Use With ETS-1AN-SL-9VDC	£4.47
SRSI-24AC/DC	For Use With ETS-1CN-SL-12VDC	£4.47
SRSI-24AC/DC	For Use With ETS-1CN-SL-24VDC	£4.47
SRSI-60AC/DC	For Use With ETS-1CN-SL-48VDC	£4.47
SRSI-24DC	For Use With ETS-1CN-SL-5VDC	£4.47
SRSI-60AC/DC	For Use With ETS-1CN-SL-60VDC	£4.47
SRSI-24DC	For Use With ETS-1CN-SL-6VDC	£4.47
SRSI-24AC/DC	For Use With ETS-1CN-SL-9VDC	£4.47

Slimline Power Relays Accessories

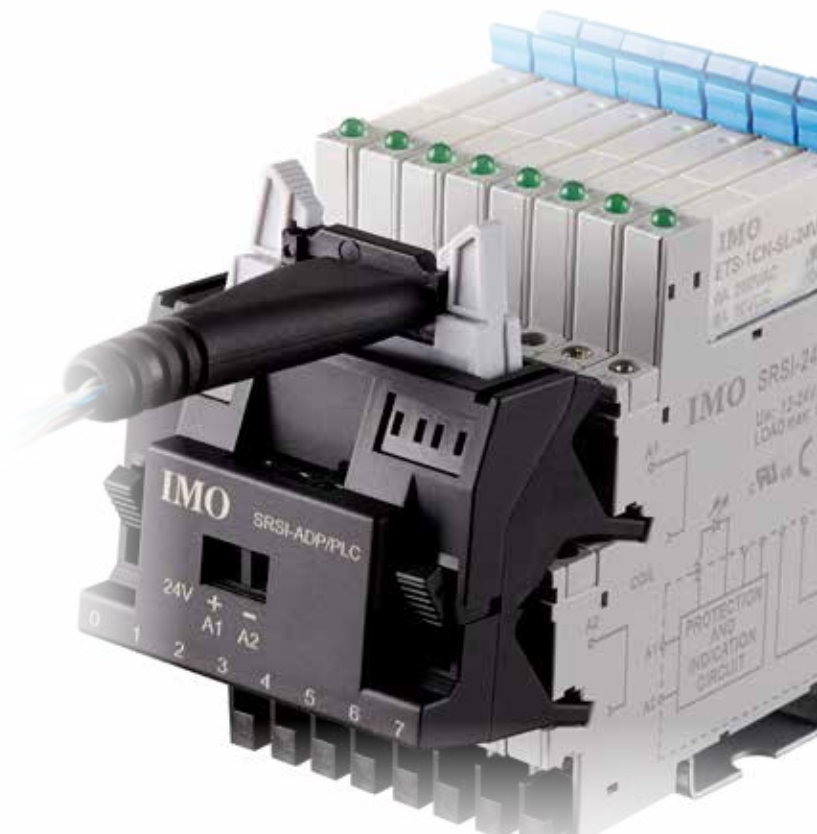


Part Number	Description	Price
SRSI-ADP-L1M	1m Ribbon Cable 2x14 Pin to 1x20Pin	£19.58
SRSI-ADP-L1M/32	1m Ribbon Cable 4x14 Pin to 1x32Pin	£27.29
SRSI-ADP-L2M	2m Ribbon Cable 2x14 Pin to 1x20Pin	£27.96
SRSI-ADP-L2M/32	2m Ribbon Cable 4x14 Pin to 1x32Pin	£35.85
SRSI-ADP/PLC	Adaptor Interface for SRSI Base to PLC 14 pole 1A 24VDC acc. IEC 60603-13	£16.37
SRSI-CC/20BLACK	20-Way Cross Connector for SRSC/SRSI	£1.55
SRSI-CC/20BLUE	20-Way Cross Connector for SRSC/SRSI	£1.55
SRSI-CC/20RED	20-Way Cross Connector for SRSC/SRSI	£1.55

Relay Socket Plug-In Modules



Part Number	Description	Price
For SRNE2-D/S, SRNE3-D, SRNE4-D/S, SRNE3-S/T, SRNE5-S/T		
PDLME1	6-24 AC/DC Diode LED Resistor	£1.94
PDLME3	110-230 AC/DC Diode LED Resistor	£1.94
PDME1	6-230 VDC Diode -A1 to +A4	£0.89
PDME2	6-230 VDC Diode +A1 to -A2	£0.89
PLME1	6-24 VDC Diode LED Resistor	£1.25
PLME1-R	6-24 VDC Diode LED Resistor	£1.25
PVME2	115 VAC Varistor	£2.78
For SRR8-M, SRR11-M		
RPDME1	6-220 VDC Diode -A1 to +A2	£1.25



SRSI-24DC & SRSI-ADP/PLC - Relay & Socket

IMO STARLINE CATALOGUE 2017-18

Distribution Boxes, Enclosures & Accessories

ABS Plastic Enclosures



Plain Sided Walls
IP66 - IP67 Rating
Circuit Board Slots in Base
Screws Captive Once Fitted



Part Number	Description	Price
144E0001	Opaque ABS (75 x 125 x 75mm)	£6.94
144E0002	Opaque ABS (125 x 125 x 75mm)	£8.27
144E0003	Opaque ABS (125 x 125 x 100mm)	£8.57
144E0004	Opaque ABS (125 x 175 x 75mm)	£9.90
144E0005	Opaque ABS (125 x 175 x 100mm)	£10.20
144E0006	Opaque ABS (125 x 175 x 125mm)	£10.49
144E0007	Opaque ABS (175 x 175 x 100mm)	£13.43
144E0008	Opaque ABS (175 x 175 x 125mm)	£13.87
144E0009	Opaque ABS (175 x 175 x 150mm)	£18.60
144E0010	Opaque ABS (175 x 250 x 100mm)	£22.14
144E0011	Opaque ABS (175 x 250 x 150mm)	£25.38
144E1008	Opaque ABS (120 x 200 x 86mm)	£12.69
144E1010	Opaque ABS (230 x 300 x 111mm)	£29.53
144E2002	Transparent Lid ABS (125 x 125 x 75mm)	£9.00
144E2003	Transparent Lid ABS (125 x 175 x 100mm)	£11.06
144E2004	Transparent Lid ABS (125 x 175 x 150mm)	£11.96

ASA Plastic Distribution Boxes



High Thermal Stability
Transparent Door
Earth & Neutral Bars Included
Suitable for PV Applications



Part Number	Description	Price
E-04W	4 Way IP65 (127 x 200 x 120mm)	£28.03
E-08W	8 Way IP65 (200 x 200 x 120mm)	£34.24
E-12W	12 Way IP65 (318 x 258 x 142mm)	£44.94
E-24W	24 Way IP65 (318 x 383 x 142mm)	£64.63
E-36W	36 Way IP65 (507 x 318 x 142mm)	£69.73

NOTE: Each distribution box comes with a set of accessories which includes:-

- 6 way divisible blanking plates
- 4x wall plug and screws
- 4x internal screw caps
- Application identifier stickers

Polycarbonate Enclosures



Plain Sided Walls
IP66 - IP67 Rating
Circuit Board Slots in Base
Screws Captive Once Fitted



Part Number	Description	Price
144EP0002	Opaque Polycarbonate (125 x 125 x 75mm)	£8.27
144EP0004	Opaque Polycarbonate (125 x 175 x 75mm)	£9.90
144EP0005	Opaque Polycarbonate (125 x 175 x 100mm)	£10.20
144EP0006	Opaque Polycarbonate (125 x 175 x 125mm)	£10.49
144EP0008	Opaque Polycarbonate (175 x 175 x 125mm)	£13.87
144EP0010	Opaque Polycarbonate (175 x 250 x 100mm)	£22.14
144EP0011	Opaque Polycarbonate (175 x 250 x 150mm)	£25.38

Accessories



Part Number	Description	Price
E-LOCK	Barrel Lock to suit E-xxW Distribution Boxes	£12.41
144A0001	Hinge Pair	£6.52
144R0001	DIN Rail for 144E0001	£0.72
144R0002	DIN Rail for 144E0002/3	£0.90
144R0004	DIN Rail for 144E0004/5/6/7/8/9	£0.96
144R0010	DIN Rail for 144E0010/11	£1.10

SD1 General Purpose Inverter & Accessories AC Variable Speed Drives (0.4kW ~ 110kW)

SD1 Single-Phase 200V



IP20 Rated



Part Number	Description	Price
SD1-2.5A-21	SD1 0.4kW 2.5 Amp Torque Vector*	£113.17
SD1-4.2A-21	SD1 0.75kW 4.2 Amp Torque Vector*	£128.14
SD1-7.5A-21	SD1 1.5kW 7.5 Amp Torque Vector*	£186.78
SD1-10A-21	SD1 2.2kW 10 Amp Torque Vector*	£225.68

* UL / cUL Pending

SD1 Three-Phase 200V



IP20 Rated



Part Number	Description	Price
SD1-2.5A-23	SD1 0.4kW 2.5 Amp Torque Vector*	POA
SD1-4.2A-23	SD1 0.75kW 4.2 Amp Torque Vector*	POA
SD1-7.5A-23	SD1 1.5kW 7.5 Amp Torque Vector*	POA
SD1-10A-23	SD1 2.2kW 10 Amp Torque Vector*	POA
SD1-16A-23	SD1 4kW 16 Amp Torque Vector*	POA
SD1-20A-23	SD1 5.5kW 20 Amp Torque Vector*	POA
SD1-30A-23	SD1 7.5kW 30 Amp Torque Vector*	POA

* UL / cUL Pending

SD1 Three-Phase 400V



IP20 Rated



Part Number	Description	Price
SD1-2.5A-43	SD1 0.4kW 2.5 Amp Torque Vector*	£258.94
SD1-4.2A-43	SD1 1.5kW 4.2 Amp Torque Vector*	£269.27
SD1-5.5A-43	SD1 2.2kW 5.5 Amp Torque Vector*	£297.43
SD1-9.5A-43	SD1 4kW 9.5 Amp Torque Vector*	£478.47
SD1-14A-43	SD1 5.5kW 14 Amp Torque Vector*	£618.33
SD1-18.5A-43	SD1 7.5kW 18.5 Amp Torque Vector*	£695.63
SD1-25A-43	SD1 11kW 25 Amp Torque Vector*	£879.65
SD1-32A-43	SD1 15kW 32 Amp Torque Vector*	£1,085.76
SD1-38A-43	SD1 18.5kW 38 Amp Torque Vector*	£1,339.72
SD1-45A-43	SD1 22kW 45 Amp Torque Vector*	£1,623.13
SD1-60A-43	SD1 30kW 60 Amp Torque Vector*	£1,950.69
SD1-75A-43	SD1 37kW 75 Amp Torque Vector*	£2,252.50
SD1-92A-43	SD1 45kW 92 Amp Torque Vector*	£2,225.00
SD1-115A-43	SD1 55kW 115 Amp Torque Vector*	£3,557.42
SD1-150A-43	SD1 75kW 150 Amp Torque Vector*	£4,191.82
SD1-180A-43	SD1 90kW 180 Amp Torque Vector*	£4,778.03
SD1-215A-43	SD1 110kW 215 Amp Torque Vector*	£5,512.80

* UL / cUL Pending

SD1 Filters & Accessories



Part Number	Description	Price
SD1-RFC3-25S	C3 Filter for Single-Phase SD1 models	£11.24
SD1-RFC3-6S	C3 Filter for Three-Phase SD1 models	£15.52
SD1-KP	5 Digit External Mount LED Keypad	£16.85
SD1-KP-CPY	5 Digit External Mount LED Keypad w/copy	£31.83
SD1-KP-MB	Keypad Mounting Bracket for SD1 keypads	£2.63

IMO STARLINE CATALOGUE 2017-18



Jaguar AC Variable Speed Drives 0.4kW ~ 710kW (0.55HP ~ 950HP)

CUB Micro Inverter 0.4 ~ 4kW



IP20 Rated



Part Number	Description	Price
CUB3A-1	0.4kW 200-240V 1Ph 50-60Hz 3 Amp	£155.15
CUB5A-1	0.75kW 200-240V 1Ph 50-60Hz 5 Amp	£203.30
CUB8A-1	1.5kW 200-240V 1Ph 50-60Hz 8 Amp	£287.83
CUB11A-1	2.2kW 200-240V 1Ph 50-60Hz 11 Amp	£319.93
CUB1A5-4	0.4kW 380-480V 3Ph 50-60Hz 1.5 Amp	£308.16
CUB2A5-4	0.75kW 380-480V 3Ph 50-60Hz 2.5 Amp	£342.40
CUB3A7-4	1.5kW 380-480V 3Ph 50-60Hz 3.7 Amp	£379.85
CUB5A5-4	2.2kW 380-480V 3Ph 50-60Hz 5.5 Amp	£434.42
CUB9A-4	4kW 380-480V 3Ph 50-60Hz 9 Amp	£515.74

NOTE: Filtered versions available. Please contact IMO for more information

VXR Compact Inverter 0.4 ~ 15kW



IP20 Rated



Part Number	Description	Price
VXR3A-1E*	0.4kW 200-240V 1Ph 50-60Hz 3 Amp	£265.36
VXR5A-1E*	0.75kW 200-240V 1Ph 50-60Hz 5 Amp	£299.60
VXR8A-1E*	1.5kW 200-240V 1Ph 50-60Hz 8 Amp	£454.75
VXR11A-1E*	2.2kW 200-240V 1Ph 50-60Hz 11 Amp	£502.90
VXR1A5-4E*	0.4kW 380-480V 3Ph 50-60Hz 1.5 Amp	£417.30
VXR2A5-4E*	0.75kW 380-480V 3Ph 50-60Hz 2.5 Amp	£470.80
VXR3A7-4E*	1.5kW 380-480V 3Ph 50-60Hz 3.7 Amp	£518.95
VXR5A5-4E*	2.2kW 380-480V 3Ph 50-60Hz 5.5 Amp	£567.10
VXR9A-4E*	4kW 380-480V 3Ph 50-60Hz 9 Amp	£659.12
VXR13A-4	5.5kW 380-480V 3Ph 50-60Hz 13 Amp	£706.20
VXR18A-4	7.5kW 380-480V 3Ph 50-60Hz 18 Amp	£856.00
VXR24A-4	11kW 380-480V 3Ph 50-60Hz 24 Amp	£1,209.10
VXR30A-4	15kW 380-480V 3Ph 50-60Hz 30 Amp	£1,706.65

* Models showing 'E' are supplied with an integral EMC Filter

VXG Torque Vector Drives ~ 630kW



IP20 / 00 Rated
380-480V 3Ph 50-60Hz



Part Number	Description				Rated Output Current (Amps)		Price
	Nonimal Power CT	Nonimal Power VT	Nonimal Power CT	Nonimal Power VT	Rated Output Current (Amps) CT	Rated Output Current (Amps) VT	
	kW	HP	kW	HP	CT	VT	
VXG1A5-4E*	0.4	0.55	-	-	1.5	-	£727.60
VXG2A5-4E	0.75	1	-	-	2.5	-	£765.59
VXG4A-4E	1.5	2	-	-	4	-	£950.16
VXG5.5A-4E*	2.2	3	-	-	5.5	-	£1,037.90
VXG9A-4E*	4	5.5	-	-	9	-	£1,341.78
VXG16A5L-4E*	5.5	7.5	7.5	10	13.5	16.5	£1,580.39
VXG23AL-4E*	7.5	10	11	15	18.5	23	£1,867.15
VXG30A5L-4E*	11	15	15	20	24.5	30.5	£2,174.24
VXG37AL-4E*	15	20	18.5	25	32	37	£3,124.40
VXG45AL-4E*	18.5	25	22	30	39	45	£3,798.50
VXG60AL-4E*	22	30	30	40	45	60	£4,280.00
VXG75AL-4E*	30	40	37	50	60	75	£5,382.10
VXG91AL-4E*	37	50	45	60	75	91	£6,099.00
VXG112AL-4E*	45	60	55	75	91	112	£7,227.85
VXG150AL-4E*	55	75	75	100	112	150	£8,298.92
VXG176AL-4E*	75	100	90	125	150	176	£9,615.02
VXG210AL-4E*	90	125	110	150	176	210	£10,901.16
VXG253AL-4E*	110	150	132	180	210	253	£12,249.36
VXG304AL-4E*	132	180	160	218	253	304	£14,515.62
VXG377AL-4E*	160	218	200	270	304	377	£15,923.74
VXG415AL-4E*	200	270	220	300	377	415	£18,680.06
VXG520AL-4E*	220	300	280	380	415	520	£20,517.25
VXG650AL-4E*	280	380	315	425	520	650	£28,890.00
VXG740AL-4E*	315	425	355	475	585	740	£33,170.00
VXG840AL-4E*	355	475	400	530	650	840	£35,310.00
VXG960AL-4E*	400	530	500	670	740	960	£37,450.00
VXG1170AL-4E*	500	670	630	840	960	1170	£51,360.00
VXG1370AL-4E*	630	840	710	950	1170	1370	£54,570.00

* Models showing 'E' are supplied with an integral EMC Filter

For Water & Wastewater Applications

AQUA

VXA Variable Torque Drives ~ 710kW



IP55 / 21 / 00 Rated
380-480V 3Ph 50-60Hz



Part Number	Description	Price from
VXA2A5#-4E	0.75kW (1HP) 2.5 Amp	£477.22
VXA4A1#-4E	1.5kW (2HP) 4.1 Amp	£563.89
VXA5A5#-4E	2.2kW (3HP) 5.5 Amp	£640.93
VXA9#-4E	4kW (5.5HP) 9 Amp	£815.34
VXA13A5#-4E	5.5kW (7.5HP) 13.5 Amp	£965.14
VXA18A5#-4E	7.5kW (10HP) 18.5 Amp	£1,139.55
VXA24A5-4E	11kW (15HP) 24.5 Amp	£1,401.70
VXA32#-4E	15kW (20HP) 32 Amp	£1,662.78
VXA39#-4E	18.5kW (25HP) 39 Amp	£1,979.50
VXA45#-4E	22kW (30HP) 45 Amp	£2,326.18
VXA60#-4E	30kW (40HP) 60 Amp	£2,747.76
VXA75#-4E	37kW (50HP) 75 Amp	£3,258.15
VXA91#-4E	45kW (60HP) 91 Amp	£3,925.83
VXA112#-4E	55kW (75HP) 112 Amp	£4,566.76
VXA150#-4E	75kW (100HP) 150 Amp	£5,480.54
VXA176#-4E	90kW (125HP) 176 Amp	£6,543.05
VXA210S-4E	110kW (150HP) 210 Amp	£8,554.65
VXA253S-4E	132kW (180HP) 253 Amp	£9,892.15
VXA304S-4E	160kW (218HP) 304 Amp	£12,733.00
VXA377S-4E	200kW (270HP) 377 Amp	£16,157.00
VXA415S-4E	220kW (300HP) 415 Amp	£18,190.00
VXA520S-4E	280kW (380HP) 520Amp	£22,202.50
VXA585S-4E	315kW (425HP) 585 Amp	£32,902.50
VXA650S-4E	355kW (475HP) 650 Amp	£34,668.00
VXA740S-4E	400kW (500P) 740 Amp	£45,903.00
VXA960S-4E	500kW (670HP) 960 Amp	£49,220.00
VXA1170S-4E	630kW (840HP) 1170 Amp	£CALL
VXA1370S-4E	710kW (950HP) 1370 Amp	£CALL

For HVAC Applications

HVAC

VXH Variable Torque Drives ~ 710kW



IP55 / 21 / 00 Rated
380-480V 3Ph 50-60Hz

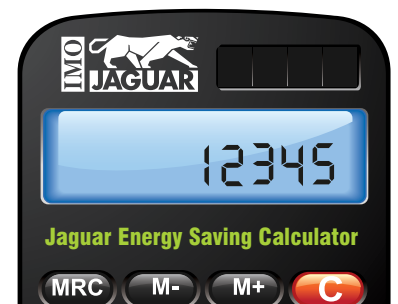


Part Number	Description	Price from
VXH2A5#-4E	0.75kW (1HP) 2.5 Amp	£477.22
VXH4A1#-4E	1.5kW (2HP) 4.1 Amp	£563.89
VXH5A5#-4E	2.2kW (3HP) 5.5 Amp	£640.93
VXH9#-4E	4kW (5.5HP) 9 Amp	£815.34
VXH13A5#-4E	5.5kW (7.5HP) 13.5 Amp	£869.91
VXH18A5#-4E	7.5kW (10HP) 18.5 Amp	£1,028.27
VXH24A5-4E	11kW (15HP) 24.5 Amp	£1,262.60
VXH32#-4E	15kW (20HP) 32 Amp	£1,499.07
VXH39#-4E	18.5kW (25HP) 39 Amp	£1,782.62
VXH45#-4E	22kW (30HP) 45 Amp	£2,093.99
VXH60#-4E	30kW (40HP) 60 Amp	£2,470.63
VXH75#-4E	37kW (50HP) 75 Amp	£2,930.73
VXH91#-4E	45kW (60HP) 91 Amp	£3,732.16
VXH112#-4E	55kW (75HP) 112 Amp	£4,332.43
VXH150#-4E	75kW (100HP) 150 Amp	£5,172.38
VXH176#-4E	90kW (125HP) 176 Amp	£6,115.05
VXH210S-4E	110kW (150HP) 210 Amp	£7,741.45
VXH253S-4E	132kW (180HP) 253 Amp	£8,919.52
VXH304S-4E	160kW (218HP) 304 Amp	£11,544.23
VXH377S-4E	200kW (270HP) 377 Amp	£14,166.80
VXH415S-4E	220kW (300HP) 415 Amp	£17,441.00
VXH520S-4E	280kW (380HP) 520Amp	£20,865.00
VXH585S-4E	315kW (425HP) 585 Amp	£32,100.00
VXH650S-4E	355kW (475HP) 650 Amp	£33,170.00
VXH740S-4E	400kW (500P) 740 Amp	£43,335.00
VXH960S-4E	500kW (670HP) 960 Amp	£47,080.00
VXH1170S-4E	630kW (840HP) 1170 Amp	£CALL
VXH1370S-4E	710kW (950HP) 1370 Amp	£CALL

NOTE: Replace '#' on selected models for different IP rated protective structure S = IP00 M = IP21 L = IP55
Models showing 'E' are supplied with an integral EMC Filter

Introduction of a Variable Speed Drive can deliver energy savings of up to 50% in many cases. Equipment such as air handling units, swimming pool pumps and extraction systems can all be controlled to deliver optimum performance but at a fraction of the cost.

To find out what potential energy and financial savings you could be making, visit www.jaguar-acdrives.com and fill in the online calculator



IMO STARLINE CATALOGUE 2017-18

Single & Three Phase Power Supplies

Universal Input Voltage, High Efficiency, DIN Rail Mountable

DPS-1 Single Phase PSU



Part Number	Description	Price
Plastic Body		
DPS-1-015-5DC	90-264VAC 3 Amp 15W 5VDC	£33.17
DPS-1-018-12DC	90-264VAC 1.5 Amp 18W 12VDC	£33.17
DPS-1-018-24DC	90-264VAC 0.75 Amp 18W 24VDC	£33.17
DPS-1-030-5DC	85-264VAC 6 Amp 30W 5VDC	£37.99
DPS-1-030-12DC	85-264VAC 2.5 Amp 30W 12VDC	£37.83
DPS-1-030-24DC	85-264VAC 1.25 Amp 30W 24VDC	£37.99
DPS-1-030-48DC	85-264VAC 0.625 Amp 30W 48VDC	£37.99
DPS-1-050-5DC	85-264VAC 10 Amp 50W 5VDC	£50.54
DPS-1-060-12DC	85-264VAC 5 Amp 60W 12VDC	£50.54
DPS-1-060-24DC	85-264VAC 2.5 Amp 60W 24VDC	£39.10
DPS-1-060-48DC	85-264VAC 1.25 Amp 60W 48VDC	£50.54

Part Number	Description	Price
Metal Body		
DPS-1-100-12DC	115/230VAC 8.4 Amp 100W 12VDC	£77.09
DPS-1-100-24DC	115/230VAC 4.2 Amp 100W 24VDC	£77.09
DPS-1-100-48DC	115/230VAC 2.1 Amp 100W 48VDC	£77.09
DPS-1-120-12DC	115/230VAC 10 Amp 120W 12VDC	£75.20
DPS-1-120-24DC	115/230VAC 5 Amp 120W 24VDC	£68.30
DPS-1-120-48DC	115/230VAC 2.5 Amp 120W 48VDC	£75.20
DPS-1-240-24DC	115/230VAC 10 Amp 240W 24VDC	£102.54
DPS-1-240-48DC	115/230VAC 5 Amp 240W 48VDC	£102.54
DPS-1-300-24DC	115/230VAC 12.5 Amp 300W 24VDC	£102.54
DPS-1-300-48DC	115/230VAC 6.25 Amp 300W 48VDC	£102.54
DPS-1-480-24DC	115/230VAC 20 Amp 480W 24VDC	£150.31
DPS-1-480-48DC	115/230VAC 10 Amp 480W 48VDC	£150.31

DPS-3 Three Phase PSU



Part Number	Description	Price
Metal Body		
DPS-3-120-12DC	340-575VAC 10 Amp 120W 12VDC	£87.74
DPS-3-120-24DC	340-575VAC 5 Amp 120W 24VDC	£87.74
DPS-3-240-24DC	340-575VAC 10 Amp 240W 24VDC	£120.91
DPS-3-240-48DC	340-575VAC 5 Amp 240W 48VDC	£120.91
DPS-3-480-24DC	340-575VAC 20 Amp 480W 24VDC	£177.62
DPS-3-480-48DC	340-575VAC 10 Amp 480W 48VDC	£177.62
DPS-3-960-24DC	340-575VAC 40 Amp 960W 24VDC	£304.95
DPS-3-960-48DC	340-575VAC 20 Amp 960W 48VDC	£304.95

MPS-3 Single Phase PSU



Part Number	Description	Price
Plastic Body		
MPS-1-007-5DC	90-264VAC 1.5 Amp 7.5W 5DC	£21.40
MPS-1-015-5DC	90-264VAC 3 Amp 15W 5DC	£21.40
MPS-1-022-5DC	90-264VAC 4.5 Amp 22W 5DC	£21.40
MPS-1-035-5DC	90-264VAC 7 Amp 35W 5DC	£27.82
MPS-1-060-5DC	90-264VAC 12 Amp 60W 5DC	£33.17
MPS-1-010-12DC	90-264VAC 0.83 Amp 10W 12DC	£27.82
MPS-1-024-12DC	90-264VAC 2 Amp 24W 12DC	£27.82
MPS-1-033-12DC	90-264VAC 2.75 Amp 33W 12DC	£33.17
MPS-1-054-12DC	90-264VAC 4.5 Amp 54W 12DC	£37.45
MPS-1-072-12DC	90-264VAC 6 Amp 72W 12DC	£33.17
MPS-1-010-24DC	90-264VAC 0.42 Amp 10W 24DC	£37.45
MPS-1-024-24DC	90-264VAC 1 Amp 24W 24DC	£38.52
MPS-1-036-24DC	90-264VAC 1.5 Amp 36W 24DC	£50.29
MPS-1-060-24DC	90-264VAC 2.5 Amp 60W 24DC	£50.29
MPS-1-100-24DC	90-264VAC 4.8 Amp 100W 24DC	£50.29

Proximity Sensors

Shielded & Unshielded, Standard & Long Sensing Range Versions

Standard Distance PB Sensors



Part Number	Description	Price
Shielded Type		
PB0801/DSAP-H	M8 PNP 1.5mm Range 66mm Length	£29.41
PB1202/DSAP-H	M12 PNP 2mm Range 71mm Length	£17.46
PB1805/DSAP-H	M18 PNP 5mm Range 62mm Length	£29.41
PB3010/DSAP-H	M30 PNP 10mm Range 68mm Length	£36.38
Unshielded Type		
PB0802/DUAP-H	M8 PNP 2mm Range 71mm Length	£31.21
PB1204/DUAP-H	M12 PNP 4mm Range 70mm Length	£27.51
PB1808/DUAP-H	M18 PNP 8mm Range 70.5mm Length	£31.21
PB3015/DUAP-H	M30 PNP 15mm Range 81mm Length	£53.13

Long Distance PB Sensors



Part Number	Description	Price
Shielded Type		
PB0801/DSAP-H	M8 PNP 2mm Range 66mm Length	£29.41
PB1204/DSAP-H	M12 PNP 4mm Range 65mm Length	£29.58
PB1808/DSAP-H	M18 PNP 8mm Range 62mm Length	£31.21
PB3015/DSAP-H	M30 PNP 15mm Range 68mm Length	£53.13
Unshielded Type		
PB0804/DUAN-H*	M8 NPN 4mm Range 50mm Length	£36.73
PB1207/DUAP-H	M12 PNP 7mm Range 70mm Length	£29.58
PB1812/DUAP-H	M18 PNP 12mm Range 70.5mm Length	£31.97
PB3015/DSAP-H	M30 PNP 22mm Range 81mm Length	£53.13

* 2m Cable Exit. Most devices are available as pre-cabled, or with M12 connector.

Level Detection

DIN Rail Mountable Level Monitoring of Conductive Liquids

Fluid Level Monitoring Relay



On Delay & Off Delay
Multifunction
Width 35mm



Part Number	Description	Price
WLC-230VAC	230VAC 1250VA AC1 @ 250VAC	£52.73

Probe for Level Monitoring



Fully Insulated Stainless Steel
Operating Temperatures
Up To 60°C



Part Number	Description	Price
SK1-140	Insulated Probe 1 x 140mm	£18.51

IMO STARLINE CATALOGUE 2017-18

Photoelectric Sensors

Infrared, Visible Red LED & Red Laser Models with or without Sensitivity Adjustment

QD Miniature Sensors



Dimensions: 21 x 31.2 x 12.8mm
IP67 Rated



Part Number	Description	Price
QDRP1/0P-0F	Polarized-Retro 5m PNP	£49.99
QDID4/0P-0F	Diffuse Reflection 1.5m PNP	£51.32
QDRP1/0N-0F	Polarized-Retro 5m NPN	£49.99
QDID4/0N-0F	Diffuse Reflection 1.5m NPN	£51.32
QDIP2/0P-0A	Polarized-Retro 7m PNP	£49.99
QDRBS/0P-0F	Diffuse Reflection 0.1m PNP BGS	£58.32
QDIBS/0P-0F	Diffuse Reflection M8 Plug PNP BGS	£60.65
QDRCM1/0P-0F	Polarized-Retro M8 Plug PNP	£58.32
QDRD2/0P-0F	Diffuse Reflection M8 Plug PNP	£46.65
QDRE/00-0F	Through-Beam Emitter M8 Plug	£36.84
QDRER/0N-0F	Through-Beam TX & RX M8 Plug NPN	£76.64
QDRR/0N-0F	Through-Beam Receiver M8 Plug NPN	£40.90

NOTE: BGS = Background Suppression

Compact Photoelectric Sensors



Dimensions: 50 x 50 x 17mm
IP67 Rated



Part Number	Description	Price
SQE/0A20-C	Through-beam Emitter 20m AC	£47.88
SQG/B00.5-P	Diffuse 0.5m DC Background Suppression	£109.70
SQP/C06-C	Polarized Retro 6m AC SPDT RLY	£75.18
SQR/C020-C	Through-beam Receiver 20m AC SPDT RLY	£70.82
SQD/B01-C	Diffuse Sn= 1000mm	£51.55
SQD/B01-P	Diffuse Sn= 1000mm	£58.61
SQD/B02-C	Diffuse Sn= 2000mm	£53.10
SQD/B02-P	Diffuse Sn= 2000mm	£60.17
SQD/C01-C	Diffuse Sn= 1000mm	£71.06
SQD/C02-C	Diffuse Sn= 2000mm	£72.61
SQE/0D20-C	Through-beam Emitter Sn=20m	£39.18
SQE/0D20-P	Through-beam Emitter Sn=20m	£46.26
SQG/B00.5-C	Diffuse BS Sn= 120mm to 500mm	£102.62
SQP/B06-C	Polarized Retro Sn=6m	£60.25
SQP/B06-P	Polarized Retro Sn=6m	£67.32
SQR/B020-C	Through-beam Receiver Sn=20m	£47.81
SQR/B020-P	Through-beam Receiver Sn=20m	£54.88

Photoelectric Area Sensors



IP67 Rated



Part Number	Description	Price
BX80A/1P-0H	Area Sensor Receiver 2m PNP	£234.93
BX80S/10-0H	Area Sensor Emitter 2m	£197.35
BX80A/1P-1H	Area Sensor Receiver 2m PNP Aluminium Body	£361.35
BX80A/5P-0H	Area Sensor Receiver 0.25m PNP	£258.99
BX80S/50-0H	Area Sensor Emitter 0.25m	£254.65
BX80S/10-1H	Area Sensor Emitter 2m Aluminium Body	£321.11
BX80S/10-1A	Area Sensor Emitter 2m with 2m Cable	£327.69

Photoelectric, Capacitive & Ultrasonic Sensors

M18 Barrel Photoelectric Sensors



FA: IP67 Rated
FF: IP67, IP68 & IP69K



Part Number	Description	Price
FAI7/BP-0E	Diffuse Infrared 0.4m PNP	£71.07
FAI4/BP-0E	Diffuse Infrared 0.2m PNP	£61.26
FAIC/BP-0E	Retro-Reflective Infrared 4m PNP	£71.07
FAIH/00-0E	Through Beam-Emitter Infrared	£32.92
FAID/0P-0E	Through Beam-Receiver Infrared 20m PNP	£62.73
FFI7/BP-1E	Diffuse 0.4m PNP*	£71.07
FFI8/BP-1E	Diffuse 0.8m PNP*	£74.34
FFIH/00-1E	Through-Beam Emitter*	£52.59
FFIZ/BN-1E	Through-Beam Receiver 20m NPN*	£54.51
FFIZ/BP-1E	Through-Beam Receiver 20m PNP*	£54.51
FFRL/BP-1E	Polarized-Retro 1m PNP*	£77.37
FFRN/BP-1E	Polarized-Retro 4m PNP*	£77.37

* Stainless steel body

Ultrasonic Sensors



IP67 Rated



Part Number	Description	Price
UK1C/E1-0E	Ultrasonic Sensor 0.9m 0-10V	£175.34
UK1D/E1-0E	Ultrasonic Sensor 1.6m 0-10V	£186.30
UK1D/E2-0E	Ultrasonic Sensor 1.5m 4-20mA	£186.30
UK1D/EW-0A	Ultrasonic Sensor 1.5m 2NO PNP	£203.84

Capacitive Sensors



IP67 Rated



Part Number	Description	Price
C18P/BP-1A	Cap. Sensor M18 8mm AC	£80.82
C18P/A0-1E	Cap. Sensor M18 8mm AC	£80.82
C30P/00-1E	Cap. Sensor M30 16mm AC SCR	£119.88
C30M/00-1E	Cap. Sensor M30 16mm AC SCR SS Body	£119.88



QBRG/OP-0E - Miniature Photoelectric Sensor

IMO STARLINE CATALOGUE 2017-18

Limit Switches

8 Body Styles, Numerous Contact Blocks & Actuators Giving Over 3,000 Configurations

Plastic Body Limit Switches



Part Number	Description	Price
Single Conduit Entry		
LRC5A01	Short Piston Plunger	£12.31
LRC5A02	One-Way Roller (Top Actuated)	£13.62
LRC5A05	One-Way Roller (Side Actuated)	£13.62
LRC5A07	One-Way Roller (Adjustable)	£14.21
LRC5A08	Piston Plunger (Sealed)	£12.52
LRC5A10	M12 Piston Plunger	£14.63
LRC5A13	M18 Piston Plunger	£14.84
LRC5A15	11mm Roller Plunger	£14.21
LRC5A20	Coil Spring & Rod (Sealed)	£13.59
LRC5A21	Cats Whisker	£14.21
LRC5A25	Coiled Spring (Sealed)	£15.11
LRC5A31	Roller Lever	£15.11
LRC5A33	Lever Rod (Square)	£15.11
LRC5A50	Lever Rod (Round)	£15.84
LRC5A51	Large Offset Roller Lever	£15.43
LRC5A52	Roller Lever Long	£15.43
LRC5A54	Offset Roller Lever	£15.43
LRC5A55	Adjustable Roller Lever	£15.85
LRC5A69	Lever Rod (Glass Fibre)	£13.47

Part Number	Description	Price
Double Conduit Entry		
LXC5A01	Short Piston Plunger	£13.19
LXC5A02	One-Way Roller (Top Actuated)	£15.01
LXC5A05	One-Way Roller (Side Actuated)	£14.54
LXC5A07	One-Way Roller (Adjustable)	£17.10
LXC5A08	Piston Plunger (Sealed)	£14.27
LXC5A13	M18 Piston Plunger	£17.86
LXC5A15	11mm Roller Plunger	£14.45
LXC5A20	Coil Spring & Rod (Sealed)	£15.84
LXC5A21	Cats Whisker	£15.89
LXC5A25	Coiled Spring (Sealed)	£17.08
LXC5A31	Roller Lever	£16.10
LXC5A33	Lever Rod (Square)	£17.41
LXC5A50	Lever Rod (Round)	£17.39
LXC5A51	Large Offset Roller Lever	£16.34
LXC5A52	Roller Lever Long	£16.89
LXC5A54	Offset Roller Lever	£16.34
LXC5A55	Adjustable Roller Lever	£17.37
LXC5A69	Lever Rod (Glass Fibre)	£17.41

Metal Body Limit Switches



Part Number	Description	Price
Single Conduit Entry		
LMC5A01	Short Piston Plunger	£15.85
LMC5A02	One-Way Roller (Top Actuated)	£16.45
LMC5A05	One-Way Roller (Side Actuated)	£17.16
LMC5A07	One-Way Roller (Adjustable)	£17.74
LMC5A08	Piston Plunger (Sealed)	£16.59
LMC5A10	M12 Piston Plunger	£17.43
LMC5A13	M18 Piston Plunger	£21.04
LMC5A15	11mm Roller Plunger	£17.74
LMC5A20	Coil Spring & Rod (Sealed)	£16.96
LMC5A21	Cats Whisker	£17.16
LMC5A25	Coiled Spring (Sealed)	£18.73
LMC5A31	Roller Lever	£18.73
LMC5A33	Lever Rod (Square)	£19.20
LMC5A50	Lever Rod (Round)	£18.52
LMC5A51	Large Offset Roller Lever	£18.97
LMC5A52	Roller Lever Long	£20.43
LMC5A54	Offset Roller Lever	£18.97
LMC5A55	Adjustable Roller Lever	£19.38
LMC5A69	Lever Rod (Glass Fibre)	£20.95



Part Number	Description	Price
LDC5A35	Adjustable Roller Lever	£27.52
LDC5A25	Sealed Coiled Spring	£21.10
LDC5A31-1	Steel Roller Lever With Offset	£26.53
LDC5A31	Roller Lever With Offset	£25.86
LDC5A41	Two Stable Positions, 1 Track	£30.52
LDC5A05	One Way Roller Side Actuation	£18.49
LDC5A20	Sealed Coil Spring + Rod	£19.27
LDC5A10	Sealed Piston Plunger	£18.08

Safety Limit Switches

8 Body Styles, Numerous Contact Blocks & Actuators Giving Over 3,000 Configurations

Metal Body Rope Switches



Part Number	Description	Price
LDC18RRL	NO+NC 90° Head to Left + Reset	£42.06
LDC18RRR	NO+NC 90° Head to Right + Reset	£42.06
LDC18RRS	NO+NC Head Straight + Reset	£26.47
LDC20RRS	NO+2NC Slow Action BBM + Reset	£29.18
LDC9RRL	2NC Head 90° to Left + Reset	£43.71
LDC9RRR	2NC Head 90° to Right + Reset	£43.71
LDC9RRS	2NC Head Straight + Reset	£29.43
LLC9RRS	2NC + Reset	£27.24

Standard Body Door Interlock



Part Number	Description	Price
LDC18MR-F120	90° Key NO NC Controlled by Lock Metal Body	£50.99
LDC6JK-F1	90° Actuator NO+NC Metal Body	£35.11
LDC6JK-F2	Flat Actuator NO+NC Metal Body	£39.20
LDC9JK-F	Flat Actuator 2NC Metal Body	£36.32
LDC9R2-F120	90° Key 2NC w/Delayed Key Metal Body	£43.35
LDC20R2-F	Flat Actuator NO+2NC w/Delayed Key Metal Body	£52.33
LDC20R2-F1	90° Key NO+2NC w/Delayed Key Metal Body	£52.33
LPC9R2-F1	90° Key 2NC w/Delayed Release Plastic Body	£39.52

Solenoid Door Interlock



Part Number	Description	Price
LGMSAS1D0Z-F28	24VAC/DC Univ Ac. NO+NC NO+NC On to Release	£184.13
LGMSAS1E0Z	24VAC/DC No Act NO+NC, NO+NC Off to Release	£195.19
LGMSAS1E3Z	12VDC No Act NO+NC NO+NC Off to Release	£195.19
LGMSPS1E0A	24VAC/DC No Act NC 3NC Off to Release 2LED	£209.56
PSC1860F120-F	120VA/DC Flat Act NO+NC On to Release	£130.41
PSC2060F024-F	24VAC/DC Flat Act NO+2NC On to Release	£132.42
PSC2060F024-F1	24VAC/DC 90° Act NO+2NC On to Release	£132.42
PSC2060F024-F2	24VAC/DC Flex Act NO+2NC On to Release	£137.43
PSC2060F024-F3	24VAC/DC Adj Act NO+2NC On to Release	£137.43
PSC2060N024-F	24VAC/DC Flat Act NO+2NC Off to Release	£132.42
PSC2060N024-F1	24VAC/DC 90° Act NO+2NC Off to Release	£132.42
PSC2860F024-F1	24VAC/DC 90° Act NC NO+NC On to Release/Key	£132.42
PSC2860N024-F3	24VAC/DC Adj Act NC NO+NC Off to Release	£137.75
PSC2960F024-F3	24VAC/DC Adj Act NC 2NC On to Release	£124.30
PSC2960F120-F320	120VA/DC Adj Act NC 2NC On to Release	£130.02
PSC3060F024-F7	24VAC/DC Jointed Act 2NC NC On to Release	£129.73
PSC3060N024-F1	24VAC/DC 90° Act 2NC NC Off to Release	£126.54

Compact Plastic Door Interlock



Part Number	Description	Price
LRC18CH	Hinge Operated NO+NC Slow Action	£27.76
LRC20JK	No Actuator NO+2NC Slow Action	£30.29
LRC20JK-D	Flat Actuator NO+2NC Slow Action	£31.36
LRC20JK-D2	Flexible Actuator NO+2NC Slow Action	£31.36
LRC6JK-D	Flat Actuator NO+NC Slow Action	£25.82
LRC6JK-D1	90° Actuator NO+NC Slow Action	£25.82
LRC6JK-D2	Flexiable Actuator NO+NC Slow Action	£25.82
LRC6JK-DX70	Flat Actuator NO+NC Slow Action M12 Plug	£31.61
LRC6JK-D1X70	90° Actuator NO+NC Slow Action M12 Plug	£31.61
LRC9JK	Without Key 2NC	£25.56
LRC9JK-D	Flat Actuator 2NC	£27.32
LRC9JK-D1	90° Actuator 2NC	£26.12
LRC9JK-D3	Adjustable Act 2NC	£27.32
LWC33DK-20	No Act NO+NC Slow Action 2xM20 Entry	£25.41
LRC18CH-L6	Hinge Operated NO+ NC & 120.5mm Solid Shaft	£24.92

IMO STARLINE CATALOGUE 2017-18

iSmart Intelligent Relays & Accessories Cost-Effective Programmable Controllers for Small Automation Applications

iSmart Base Units **with screen**



Part Number	Description	Price
SMT-EA-R10-V3	Smart Relay + HMI AC 6DI 4RO	£86.34
SMT-EA-R20-V3	Smart Relay + HMI AC 12DI 8RO	£134.46
SMT-ED-R12-V3	Smart Relay + HMI DC 8DI 4RO	£79.24
SMT-ED-R20-V3	Smart Relay + HMI DC 12DI 8RO	£125.96
SMT-ED12-R12-V3	Smart Relay + HMI 12DC 8DI 4RO	£81.23

iSmart Base Units **no screen**



Part Number	Description	Price
SMT-BA-R10-V3	Smart Relay AC 6DI 4RO	£72.17
SMT-BA-R20-V3	Smart Relay AC 12DI 8RO	£121.36
SMT-BD-R12-V3	Smart Relay DC 8DI 4RO	£65.11
SMT-BD-R20-V3	Smart Relay DC 12DI 8RO	£123.11

iSmart Base Units **with RS485**



Part Number	Description	Price
SMT-CD-R20-V3	Smart Relay + HMI AC 12DI 8RO RS485	£143.64

Accessories & Expansion



Part Number	Description	Price
SMT-MA-R8	I/O Expansion 100-240VAC 4DI 4RO	£55.20
SMT-MD-R8	I/O Expansion 24VDC 4DI 4RO	£50.94
SMT-MD-T8	I/O Expansion 24VDC 4DI 4TO*	£53.78
SMT-MD-4AI	I/O Expansion 24VDC 4AI	£148.85
SMT-4PT	I/O Expansion 24VDC 4PT100	£148.85
SMT-2AO	I/O Expansion 24VDC 2AO	£148.85
SMT-ENET	Ethernet Expansion Module 24VDC	£203.59
PC501	USB to Serial Adaptor	£47.49
SMT-USB	USB Programming Cable	£59.12
SMT-PC03	Programming Cable	£25.48
SMT-PM04-V3	32k Flash Memory Expansion	£9.91



SMT-CD-R20-V3 - iSmart with Expansion Modules

iView Advanced HMI & Accessories

Available in 5 screen sizes, all with over 380 industry protocols included as standard

iView Advanced HMI **E Series**



Part Number	Description	Price
IV04E-SECP	iView HMI with 4.3" Touch Screen	£
IV07E-SECP	iView HMI with 7.0" Touch Screen	£
IV10E-SECP	iView HMI with 10.4" Touch Screen	£

iView Advanced HMI **M Series**



Part Number	Description	Price
IV04M-SEAP	iView HMI with 4.3" Touch Screen	£342.40
IV07M-SEAP	iView HMI with 7.0" Touch Screen	£411.95
IV10M-SEAP	iView HMI with 10.4" Touch Screen	£1,177.00
IV12M-SEAA	iView HMI with 12.1" Touch Screen	£1,452.47
IV15M-SEAA	iView HMI with 15.0" Touch Screen	£2,022.30

iView Advanced HMI **H Series**



Part Number	Description	Price
IV07H-SEAA	iView HMI with 7.0" Touch Screen	£802.50
IV10H-SEAA	iView HMI with 10.4" Touch Screen	£1,391.00
IV12H-SEAA	iView HMI with 12.1" Touch Screen	£1,765.50
IV15H-SEAA	iView HMI with 15.0" Touch Screen	£2,675.00

Accessories

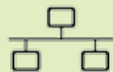


Part Number	Description	Price
MSD-16GB	16GB microSD™ Card	£20.97

See The Difference with the new iView Advanced HMI from IMO



Ingress Protection for Dust Proofing and Water Resistance



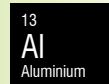
Integral Ethernet Port for remote connectivity



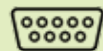
Plug in power terminal for easyfit



FTP file transfer functionality allowing remote download



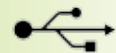
Aluminium bezel available on selected models



3 Integral Serial Ports including 1 x Screwless



microSD™ card storage for Data Logging



2 Integral USB Ports - 1 x USB A, 1 x USB B



Over 380 industry protocols as standard

IMO's new range of iView HMI's are available in five touch screen sizes 4.3", 7.0", 10.4", 12.1" and 15.0". The HMI range options include the IP65 rated E Series for basic applications, the IP66 rated M Series models for medium range applications and IP66 rated H Series models with higher capability for more demanding applications.

IMO STARLINE CATALOGUE 2017-18

i³ Intelligent Control Station & Accessories
 Integrated PLC, HMI and Openbus communications in one handy unit

i³A Intelligent Control Station



Part Number	Description	Price
I3A12X/10A01-SOOF	<i>i³A</i> 12DI, 6DO (Relay), 1AI	£414.72
I3A12X/10B04-SCHF	<i>i³A</i> 12DI, 12DO, 2AI	£460.05
I3A12X/10D03-SCHF	<i>i³A</i> 12DI, 6DO (Relay), 4AI	£495.17
I3A12X/13C14-SOHF	<i>i³A</i> 12DI, 12DO, 2UAI*, 2AO	£575.62
I3A12X/20B05-SOHF	<i>i³A</i> 24DI, 16DO, 2AI	£414.72
I3A12X/10E24-SOHF	<i>i³A</i> 12DI, 12DO, 6UAI*, 4AO	£436.89

i³B Intelligent Control Station



Part Number	Description	Price
I3B12Y/10D03-SCHF	<i>i³B</i> 12DI, 6DO (Relay), 4AI	£540.50
I3B12Y/13C14-SCHF	<i>i³B</i> 12DI, 12DO, 2UAI*, 2AO	£660.62
I3B12Y/20B05-SCHF	<i>i³B</i> 24DI, 16DO, 2AI	£567.70
I3B12Y/10E24-SCHF	<i>i³B</i> 12DI, 12DO, 6UAI*, 4AO	£1,103.37

i³CX Intelligent Control Station



Part Number	Description	Price
I3CX12Z/10D03-SEHF	<i>i³CX</i> 12DI, 6DO (Relay), 4AI	£1,104.81
I3CX12Z/20B05-SEHF	<i>i³CX</i> 24DI, 16DO, 2AI	£1,196.58
I3CX12Z/13C14-SEHF	<i>i³CX</i> 12DI, 12DO, 2UAI*, 2AO	£1,292.90
I3CX12Z/10E24-SEHF	<i>i³CX</i> 12DI, 12DO, 6UAI*, 4AO	£1,917.72
I3CX12Z/00000-SEHF	<i>i³CX</i> without I/O	£974.49

i³CM Mini Intelligent Control Station



Part Number	Description	Price
I3CM12Y/10B04-SEHF	<i>i³CM</i> 12DI, 12DO, 2AI	£901.30
I3CM12Y/10D03-SEHF	<i>i³CM</i> 12DI, 6DO (Relay), 3AI	£839.79
I3CM12Y/13C14-SEHF	<i>i³CM</i> 12DI, 12DO, 2UAI*, 2AO	£1,055.06
I3CM12Y/20B05-SEHF	<i>i³CM</i> 24DI, 16DO, 2AI	£953.35
I3CM12Y/00000-SEHF	<i>i³CM</i> without I/O	£792.48
I3CM12Y/10E24-SEHF	<i>i³CM</i> 12DI, 12DO, 6UAI*, 4AO	£1,372.31

*i*³DX Intelligent Control Station



Part Number	Description	Price
I3DX12Z/10D03-SEHF	<i>i</i> ³ DX 12DI, 6DO (Relay), 4AI	£2,100.34
I3DX12Z/13C14-SEHF	<i>i</i> ³ DX 12DI, 12DO, 2UAI*, 2AO	£2,304.06
I3DX12Z/10E24-SEHF	<i>i</i> ³ DX 12DI, 12DO, 6AI, 4AO	£2,667.86
I3DX12Z/20B05-SEHF	<i>i</i> ³ DX 24DI, 16DO, 2AI	£2,199.78
I3DX12Z/00000-SEHF	<i>i</i> ³ DX without I/O	£1,959.67

*i*³E Intelligent Control Station



Part Number	Description	Price
I3E14Z/10B04-SEHF	<i>i</i> ³ E 12DI, 12DO, 2AI	£1,556.05
I3E14Z/10D03-SEHF	<i>i</i> ³ E 12DI, 6DO (Relay), 4AI	£1,496.20
I3E14Z/13C14-SEHF	<i>i</i> ³ E 12DI, 12DO, 2UAI*, 2AO	£1,718.17
I3E14Z/20B05-SEHF	<i>i</i> ³ E 24DI, 16DO, 2AI	£1,601.83
I3E14Z/00000-SEHF	<i>i</i> ³ E without I/O	£1,335.76
I3E14Z/10E24-SEHF	<i>i</i> ³ E 12DI, 12DO, 6UAI*, 4AO	£2,138.89

Accessories



Part Number	Description	Price
I3-MA-25G	Quadband GSM Modem with Antenna	£356.52
I3-MA-30G	Global GSM Modem with Antenna	£487.60
I3PC45	Programming Cable	£18.25
PC501	USB to Serial Adaptor	£47.49
I3-PS	Profibus Slave Expansion	£251.83
I3-E	Ethernet Expansion	£291.21



*i*³A - Intelligent Control System

IMO STARLINE CATALOGUE 2017-18

XGB Programmable Logic Controllers & Accessories

Compact design, increased functionality & high speed processing

XBM PLC



160ns/Step processing speed
Max. 256 I/O point control



Part Number	Description	Price
XBM-DR16S	8 DI, 8 RO (2A), 24 VDC	£202.58
XBM-DN32S ⁽¹⁾	16 DI, 16 DO (0.2A), 24 VDC	£256.30

⁽¹⁾ Please contact IMO in order to correctly specify the required breakout cable and terminal blocks.

XBM Common Technical Specification

Supply Voltage	24 VDC
Relay Output Rating	2A Resistive
Transistor Output Rating	0.2A / point
Program Capacity	10k Steps
Max I/O Points	240/256*
Analogue Input Resolution ⁽²⁾	14 bit
Analogue Output Resolution ⁽³⁾	14 bit
PID Control	Yes
Programming Languages	Ladder
High Speed Inputs	Yes
Positioning	Yes

⁽²⁾ Model dependant

⁽³⁾ When using analogue expansion units

XBC PLC



83ns/Step processing speed
Max. 384 I/O point control



Part Number	Description	Price
XBC-DR32H	16 DI, 16 RO (2A), 100-240 VAC	£405.16
XBC-DR64H	32 DI, 32 RO (2A), 100-240 VAC	£554.01
XBC-DR32H/DC	16 DI, 16 RO (2A), 24 VDC	£405.16
XBC-DR64H/DC	32 DI, 32 RO (2A), 24 VDC	£554.01

NOTE: Please contact IMO to order transistor output versions

XBC Common Technical Specification

Supply Voltage	24 VDC or 100-240 VAC
Relay Output Rating	2A Resistive
Transistor Output Rating	0.5A / point
Program Capacity	15k Steps
Max I/O Points	352/384*
Analogue Input Resolution ⁽⁴⁾	14 bit
Analogue Output Resolution ⁽⁵⁾	14 bit
PID Control	Yes
Programming Languages	Ladder
High Speed Inputs	Yes
Positioning	Yes

⁽⁴⁾ Model dependant

⁽⁵⁾ When using analogue expansion units



To find out more about the versatile XGB PLC, go to www.imopc.com and download the IMO Automation brochure

XEC PLC

83ns/Step processing speed
Max. 384 I/O point control



Part Number	Description	Price
XEC-DR32H	16 DI, 16 RO (2A), 100-240 VAC	£405.16
XEC-DR32H/DC-E ⁽¹⁾	16 DI, 16 RO (2A), 24 VDC	£405.16
XBC-DR64H	32 DI, 32 RO (2A), 100-240 VAC	£554.01
XBC-DR64H/DC-E ⁽¹⁾	32 DI, 32 RO (2A), 24 VDC	£554.01

NOTE: Please contact IMO to order transistor output versions

⁽¹⁾ E-marked versions for 12V vehicle applications

XBC Common Technical Specification

Supply Voltage	24 VDC or 100-240 VAC
Relay Output Rating	2A Resistive
Transistor Output Rating	0.5A / point
Program Capacity	15k Steps
Max I/O Points	352/384*
Analogue Input Resolution ⁽²⁾	14 bit
Analogue Output Resolution ⁽³⁾	14 bit
PID Control	Yes
Programming Languages	IEC 61131
High Speed Inputs	Yes
Positioning	Yes

⁽²⁾ Model dependant

⁽³⁾ When using analogue expansion units



XBC-DR32H - PLC

XGB U PLC



Dual Port Ethernet
Max. 352 I/O point control



Part Number	Description	Price
XBC-DN(P)32U ⁽¹⁾	16 DI, 16 DO (0.2A)	£478.13
XBC-DR28U	16 DI, 12 RO (2A)	£478.13
XBC-DN(P)32UA ⁽¹⁾	16 DI, 16 DO (0.2A)	£747.50
XBC-DR28UA	16 DI, 12 RO (2A)	£747.50
XBC-DN(P)32UP ⁽¹⁾	16 DI, 12 DO (0.2A)	£687.50
XBC-DR28UP	16 DI, 12 RO (2A)	£687.50

⁽¹⁾ N = NPN version P = PNP version
For 24VDC models please add suffix "/DC" to the part number

XBC-U Common Technical Specification

Supply Voltage	230 VAC / 24 VDC
Relay Output Rating	2A Resistive
Transistor Output Rating	0.5A / point, 2A / COM
Program Capacity / Memory	32k Steps
Max I/O Points	348/352 ⁽²⁾
Analogue Input Resolution ⁽³⁾	1/16000
Analogue Output Resolution ⁽³⁾	1/16000
PID Control	Yes
Programming Languages	Ladder
High Speed Inputs	8
Positioning	Yes

XEC-U Common Technical Specification

Supply Voltage	230 VAC / 24 VDC
Relay Output Rating	2A Resistive
Transistor Output Rating	0.5A / point, 2A / COM
Program Capacity / Memory	384 kbytes
Max I/O Points	348/352 ⁽²⁾
Analogue Input Resolution ⁽³⁾	1/16000
Analogue Output Resolution ⁽³⁾	1/16000
PID Control	Yes
Programming Languages	IEC 61131
High Speed Inputs	8
Positioning	Yes

⁽²⁾ Model dependant

⁽³⁾ Applies only to models with analogue Input/Output

Expansion Units & Accessories



Part Number	Description	Price
Expansion Units		
XBE-DC08A	Exp. Module 8 DI, 24V Input	£98.38
XBE-DC16B	Exp. Module 16 DI, 24V Input	£109.04
XBE-DC32A ⁽⁴⁾	Exp. Module 32 DI, 24V Input	£129.19
XBE-RY08A	Exp. Module 8 Relay Output	£118.52
XBE-RY16A	Exp. Module 16 Relay Output	£150.53
XBE-TN08A	Exp. Module 8 Trans Output (sink)	£109.04
XBE-TN16A	Exp. Module 16 Trans Output (sink)	£139.86
XBE-TN32A ⁽⁴⁾	Exp. Module 32 Trans Output (sink)	£152.89
XBE-TP08A	Exp. Module 8 Trans Output (source)	£109.04
XBE-TP16A	Exp. Module 16 Trans Output (source)	£139.86
XBE-TP32A ⁽⁴⁾	Exp. Module 32 Trans Output (source)	£152.89
XBE-DR16A	Exp. Module 8 DI, 8 RO, 24V Input	£161.16
XBF-AD04A	Exp. Module 4 AI, 24V Input	£210.97
XBF-AD08A	Exp. Module 8 AI, 24V Input	£301.13
XBF-AH04A	Exp. Module 2 AI, 2 AO Volt/Current	£237.34
XBF-DV04A	Exp. Module 4 AO (voltage)	£210.97
XBF-DC04A	Exp. Module 4 AO (current)	£210.97
XBF-RD04A	Exp. Module 4 PT100 Input	£290.40
XBF-TC04S	Exp. Module 4 Thermocouple Input	£290.40
XBL-EMTA	Ethernet Communication Module 10/100	£213.35
XEL-BSSA	Smart I/O Modbus TCP Header, ENET I/O	£267.50
XBF-PN08B	Network Positioning Module 8 Axis	£528.46
Accessories		
PMC-310S	RS232 Programming Cable	£28.04
USB-301A	USB Programming Cable	£21.06
XBC-XECBATTERY	Replacement Battery	£23.89
XBO-M1024A	Program EEPROM	
R40H/20HH-05S-XBM3	0.5m Cable Link to TG7-1H40S (XBM)	£25.19
C40HH-05SB-XBI	0.5m Cable Link to TG7-1H40S (XBE)	£25.19
C40HH-10SB-XBI	1m Cable Link to TG7-1H40S (XBE)	£30.78
TG7-1H40S	Screw I/O Termination (XBM & XBE)	£25.19

⁽⁴⁾ Please contact IMO in order to correctly specify the required breakout cable and terminal boards

Signal Conditioning

Wide range of inputs inc. 4-20mA, thermocouple, frequency, RTD & voltage signals

SLIMCON



Full 3 port isolation



Part Number	Description	Price
SLIMCON-6	Configurable Input & Output - mA or V	£91.87
SLIMCON-6-FC ⁽¹⁾	Configurable Input & Output - mA or V	£91.87

⁽¹⁾ Pre-set factory configured I/P & O/P according to customer requirement

ISOCON



Full 3 port isolation



Part Number	Description	Price
ISOCON-3	90-264VAC Selectable Input & Output	£153.50
ISOCON-3-FC ⁽¹⁾	90-264VAC Selectable Input & Output	£153.50
ISOCON-3-STRAIN	Configurable, 10VDC Excitation Voltage	£153.50
ISOCON-6	12-36VDC or 12-32VAC Selectable I/O	£153.50
ISOCON-6-FC ⁽¹⁾	12-36VDC or 12-32VAC Selectable I/O	£153.50
ISOCON-6-STRAIN	Configurable, 10VDC Excitation Voltage	£153.50
VCONHL-FC	AC Amp Input, Output Volts / mA	£153.50

⁽¹⁾ Pre-set factory configured I/P & O/P according to customer requirement

DUALCON



Full 3 port isolation



Part Number	Description	Price
DUALCON-3	90-264VAC 1 UAI, 2 AO	£214.03
DUALCON-6	18-32VAC/DC 1 UAI, 2 AO	£214.03
DUALCON-6-FC ⁽¹⁾	18-32VAC/DC 1 UAI, 2 AO	£214.03

⁽¹⁾ Pre-set factory configured I/P & O/P according to customer requirement

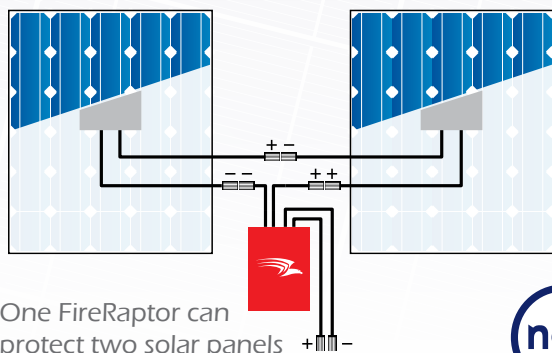


Signal Conditioning

The Ultimate Emergency Solar Panel Rapid Shutdown Solution



FireRaptor



**Complete Safety. Low Cost.
Peace Of Mind.**

The FireRaptor from IMO is an innovative emergency shutdown solution which takes your safety seriously. Offering 3 ways to shut down your solar panels to ZERO volts, the FireRaptor is the most efficient solution, easy to install and operate, and is fully compliant with NEC2017.

To find out how the amazing FireRaptor can give you total peace of mind, go to www.imopc.solar or contact your local IMO distributor.





FireRaptor & Emergency Switches

Solar Panel Rapid Shutdown Solution

FireRaptor



Part Number	Description	Price
FRS-01	Solar Panel Rapid Shutdown Solution	£42.00

Emergency Shutdown Switches



Part Number	Description	Price
FRS-ESW1	Rapid Shutdown Switch, IP65	£67.40
FRS-ESW1-K	Rapid Shutdown Switch with Key, IP65	£78.18

Keep Solar Safe: Solar Panel Rapid Shutdown Solution

The IMO FireRaptor provides three forms of Solar Panel Rapid Shutdown to ZERO VOLTS in case of fire or other emergency:

- **MANUAL EMERGENCY SHUTDOWN**

Manual shutdown is operated via an Emergency Rapid Shutdown Switch utilising a typical “one push” large emergency push button. The switch can be conveniently located anywhere for emergency access and is supplied with a 24VDC power supply to interface with the FireRaptor units.

- **AUTOMATIC EMERGENCY TEMPERATURE SHUTDOWN**

Automatic shutdown occurs via the temperature sensor onboard the FireRaptor which detects an ambient temperature rise in excess of 85°C (185°F). In the event that the temperature exceeds 92°C (198°F) then the FireRaptor will only re-engage the solar panels by manual reset done via the emergency switch. Otherwise, the FireRaptor will re-engage the solar panels automatically if the temperature drops back below the 85°C (185°F) cut-out level.

- **AUTOMATIC EMERGENCY EXTERNAL POWER LOSS SHUTDOWN**

Disconnection of the external AC supply, by whatever means, causes automatic remote operation of the Emergency Rapid Shutdown Switch.

The FireRaptor can be installed without any set-up and with any string inverter as its functionality is completely independent. “Plug & Play” style installation using industry standard connectors is easy, whether fitted to new installs or retro-fitted to existing projects to upgrade fire safety functionality.



WATCH US ON
YouTube



To find out more about the amazing FireRaptor, go to www.imopc.solar and download the brochure

TRUE DC SOLAR ISOLATORS



Over 3 Million Installed Units - ZERO FAILURES

In solar installation, the DC isolator is like a vehicle air-bag. You never know it really works until you need it. So it's good to know that the IMO SI has now surpassed 3 million installed units without a single recorded failure.

Not surprising considering the product carries all the most important approvals including UL508i, TUV (IEC 60947-1 & IEC 60947-3), CE and CCC. In fact, the IMO SI solar isolator has been tested by some of the most rigorous examiners and OEM manufacturers in the world, passing with flying colours every single time.

As ever, the SI range has a guaranteed arc suppression time of under 5mS, in built arc cooling chambers, operator independent switching mechanism and Safe-Lock handle, making it one of the safest DC isolators available, no matter who uses it or how slowly they operate it.

**Why take a risk on safety?
Insist on TRUE DC, contact us
for a quotation and see why the
IMO SI TRUE DC Isolator is the
sensible choice for the PV installer.**

Keep Solar Safe

SAFE-LOCK



SI Range of Solar Isolators & Accessories

Enclosed Isolator with Rotary Actuator Switch - Lockable OFF



- Rotary Actuator Switch
- Lockable OFF with Safe-Lock ©
- Self-Extinguishing Plastic Enclosure
- M25 Cable Gland Entry Option
- NEMA Type 3R
- IP66 Rated



Part Number	DC21A IEC60947-3				UL Ratings UL508i				Poles in series	No. of Strings	Weight Kg/pcs.	Price	Contact Configuration
	600V	800V	1000V	1500V	350V	500V	600V	1000V					
SI16-PEL64R-2	16A	16A	9A	3A	16A	16A	16A	-	2	1	0.43	£55.01	
SI25-PEL64R-2	25A	20A	11A	4A	20A	20A	20A	-	2	1	0.43	£58.93	
SI32-PEL64R-2	32A	23A	13A	5A	25A	25A	25A	-	2	1	0.43	£65.78	
SI40-PEL64R-2	40A	30A	20A	6A	40A	40A	40A	16A	2	1	1.59	£242.38	
SI55-PEL64R-2	55A	45A	25A	8A	55A	55A	55A	20A	2	1	1.59	£282.20	
SI16-PEL64R-4	16A	16A	9A	3A	16A	16A	16A	-	2	2	0.46	£59.30	
SI25-PEL64R-4	25A	20A	11A	4A	20A	20A	20A	-	2	2	0.46	£68.77	
SI32-PEL64R-4	32A	23A	13A	5A	25A	25A	25A	-	2	2	0.46	£76.92	
SI40-PEL64R-4	40A	30A	20A	6A	40A	40A	40A	16A	2	2	1.67	£263.34	
SI55-PEL64R-4	55A	45A	25A	8A	55A	55A	55A	20A	2	2	1.67	£311.54	
SI16-PEL64R-4S	16A	16A	16A	16A	16A	16A	16A	-	4	1	0.47	£66.00	
SI25-PEL64R-4S	25A	25A	25A	20A	25A	25A	25A	-	4	1	0.47	£75.49	
SI32-PEL64R-4S	32A	32A	32A	23A	32A	32A	32A	-	4	1	0.47	£83.62	
SI40-PEL64R-4S	40A	40A	40A	30A	40A	40A	40A	40A	4	1	1.70	£273.81	
SI55-PEL64R-4S	55A	55A	55A	40A	55A	55A	55A	55A	4	1	1.70	£326.23	

Keep Solar Safe: Understanding IMO TRUE DC Isolators

IMO Solar Isolators use a rotary “knife contact” mechanism so when the unit is operated the handle movement gives a double make/break per contact set. As DC load switching creates arcing, the design is such that this only occurs on the corners of the switching parts meaning that the main contact is made on an area where no arcing has occurred. The rotary contact mechanism methodology used in the IMO Solar Isolators means that, when the isolator is operated, a self-cleaning action occurs on the arcing points and contact surfaces thereby producing good high vibration resistant contact integrity, with reduced contact resistance.

The IMO design incorporates a user independent switching action so as the handle is moved it interacts with a spring mechanism which, upon reaching a set point, causes the contacts to “SNAP” over thereby ensuring a very fast break/make action. This mechanism means that the disconnection of the load circuits and suppression of the arc, produced by a constant DC load, is normally extinguished in a maximum of 5ms using the specific pole suppression chambers incorporated within the design.



SI Solar Isolator - Mechanism

Isolator with Lever Actuator Switch - Lockable OFF for Distribution Boards



- Lever Actuator Switch
- Lockable OFF with Safe-Lock ©
- For Distribution Boards
- Low Height Handle also available
- NEMA Type 1 Handle
- IP20 Body



Part Number	DC21A IEC60947-3				UL Ratings UL508i				Poles in series	No. of Strings	Weight Kg/ pcs.	Price	Contact Configuration
	600V	800V	1000V	1500V	350V	500V	600V	1000V					
SI16-DBL-2	16A	16A	9A	3A	16A	16A	16A	-	2	1	0.19	£36.54	
SI25-DBL-2	25A	20A	11A	4A	20A	20A	20A	-	2	1	0.19	£40.44	
SI32-DBL-2	32A	23A	13A	5A	25A	25A	25A	-	2	1	0.19	£47.32	
SI40-DBL-2	40A	30A	20A	6A	40A	40A	40A	16A	2	1	0.40	£64.29	
SI55-DBL-2	55A	45A	25A	8A	55A	55A	55A	20A	2	1	0.40	£90.00	
SI16-DBL-4	16A	16A	9A	3A	16A	16A	16A	-	2	2	0.46	£40.82	
SI25-DBL-4	25A	20A	11A	4A	20A	20A	20A	-	2	2	0.46	£50.30	
SI32-DBL-4	32A	23A	13A	5A	25A	25A	25A	-	2	2	0.46	£58.43	
SI40-DBL-4	40A	30A	20A	6A	40A	40A	40A	16A	2	2	1.67	£79.38	
SI55-DBL-4	55A	45A	25A	8A	55A	55A	55A	20A	2	2	1.67	£111.14	
SI16-DBL-4S	16A	16A	16A	16A	16A	16A	16A	-	4	1	0.47	£47.54	
SI25-DBL-4S	25A	25A	25A	20A	25A	25A	25A	-	4	1	0.47	£57.01	
SI32-DBL-4S	32A	32A	32A	23A	32A	32A	32A	-	4	1	0.47	£65.14	
SI40-DBL-4S	40A	40A	40A	30A	40A	40A	40A	40A	4	1	1.70	£88.49	
SI55-DBL-4S	55A	55A	55A	40A	55A	55A	55A	55A	4	1	1.70	£123.89	

Accessories



Part Number	Description	Price
SIV-B1	Insulated Jumper for SI16, SI25, SI32	£3.35
SIV-B2	Insulated Jumper for SI40, SI55	£7.30

ASA Plastic Distribution Boxes



High Thermal Stability
Transparent Door
Earth & Neutral Bars Included
Suitable for PV Applications



Part Number	Description	Price
E-04W	4 Way IP65 (127 x 200 x 120mm)	£28.03
E-08W	8 Way IP65 (200 x 200 x 120mm)	£34.24
E-12W	12 Way IP65 (318 x 258 x 142mm)	£44.94
E-24W	24 Way IP65 (318 x 383 x 142mm)	£64.62
E-36W	36 Way IP65 (507 x 318 x 142mm)	£69.73

NOTE: The image above is for illustrative purposes only, and does not come supplied as standard with the isolators as seen.

Solar Connectors

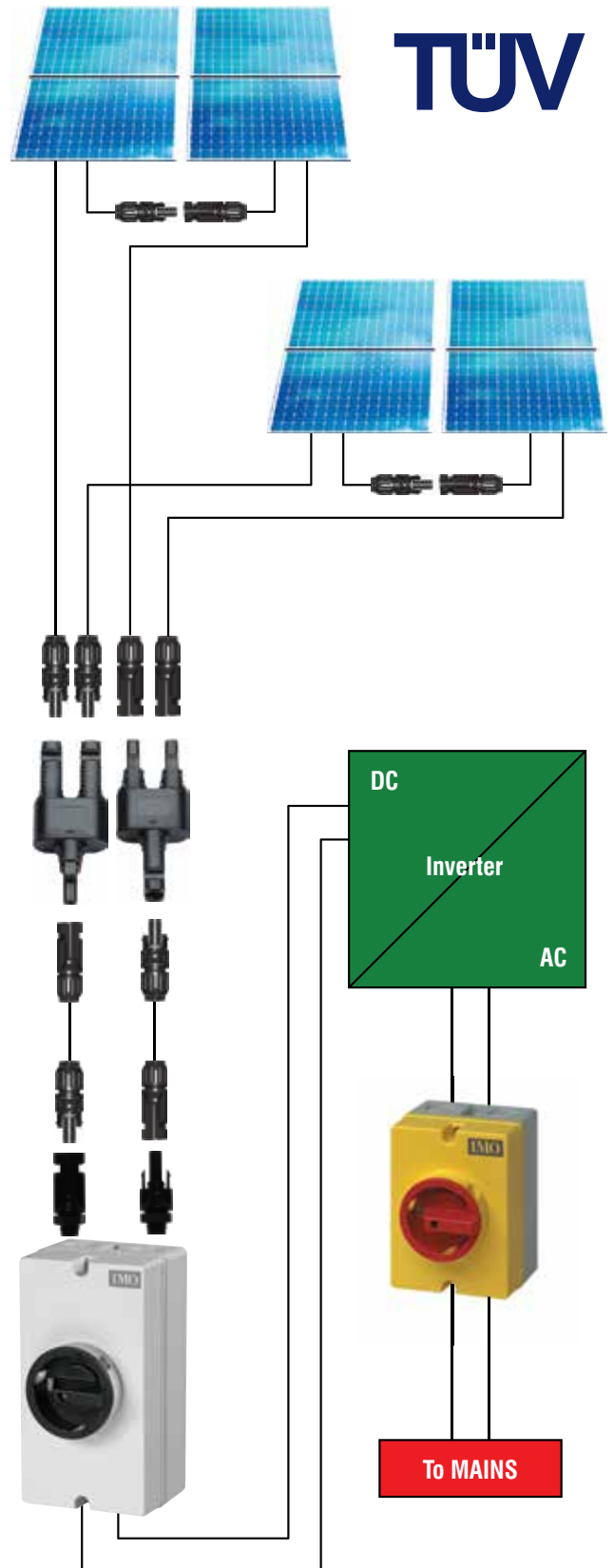
Mobile Connectors, Branch Connectors and Panel Connectors

Mobile connectors are used to connect PV panels in series. They also link lengths of cabling and allow connection to Branch and Panel connectors.

Branch connectors are used to link multiple strings together allowing, for example, a 2 pole (single string) DC isolator to switch both strings at the same time.

Panel connectors mount on solar string boxes, enclosed DC isolators and any other enclosed DC switching device allowing easy connection to the rest of the PV system.

- 1000V DC 30A Rated
- For 2.5-4-6mm² Cables
- Secure Easy Clip & Release System
- IP67 Protection
- UL94-5VA Fire Protection
- Class 2 Protection
- Operating Temperature: -40°C ~ +85°C



Solar Connectors



Part Number	Description	Price
SIC-M-4M*	Male mobile connector	£1.61
SIC-M-4F*	Female mobile connector	£1.61
SIC-P-4M	Male panel connector	£1.61
SIC-P-4F	Female panel connector	£1.61
SIC-B-4PAIR	1xMFF + 1xFMM branch connectors	£14.12
SIC-I-4M	Male connector metal insert (spare)	£0.43
SIC-I-4F	Female connector metal insert (spare)	£0.43

* TUV Approved

IMO Worldwide Offices

IMO Precision Controls Limited

1000 North Circular Road
Staples Corner
London NW2 7JP
United Kingdom

Tel: 020 8452 6444
Fax: 020 8450 2274
Email: imo@imopc.com
Web: www.imopc.com

IMO Jeambrun Automation SAS

Centre D'Affaires Rocroy
30, Rue de Rocroy
94100 Saint-Maur-Des-Fosses
France

Tel: 0800 912 712 (n° gratuit)
Fax: 0145 134 737
Email: imo-fr@imopc.com
Web: www.imojeambrun.fr

IMO Automazione

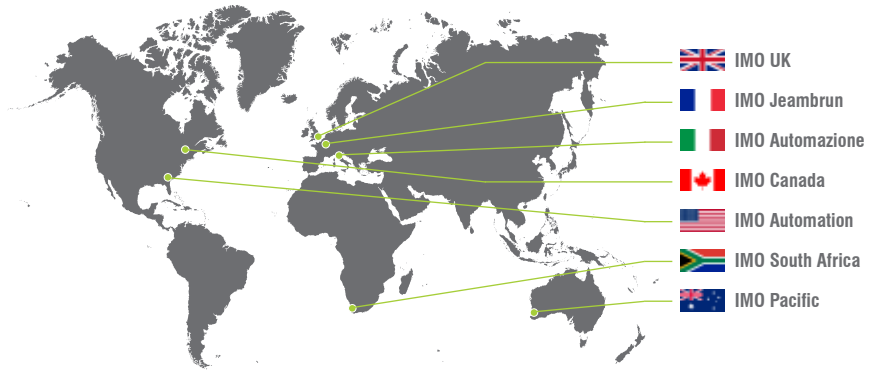
Via Ponte alle Mosse, 61
50144 Firenze (FI)
Italia

Tel: 800 930 872 (toll free)
Fax: 8000 452 6445
Email: imo-it@imopc.com
Web: www.imopc.it

IMO Canada

Unit 32 - B - North
18 Strathearn Avenue, Brampton
Ontario L6T 4Y2
Canada

Tel: 905 799 9237 (local)
Fax: 905 799 0450
Email: imo-ca@imopc.com
Web: www.imopc.com



IMO Automation LLC

101 Colony Park Drive, Suite 300
Cumming
Georgia 30040
USA

Tel: 678 679 7110
Fax: 678 679 7112
Email: imo-usa@imopc.com
Web: www.imoautomation.com

IMO South Africa (Pty) Ltd

G16 Centurion Business Park
Montague Gardens
Cape Town 7441
South Africa

Tel: 021 551 1787
Fax: 021 555 0676
Email: info@imopc.co.za
Web: www.imopc.co.za

IMO Pacific Pty Ltd

1/6 Dillington Pass
Landsdale
Perth WA 6065
Australia

Tel: 08 9302 5246 (local)
Fax: 08 9303 9908
Email: sales@imopacific.com.au
Web: www.imopacific.com.au




*Connect with and follow IMO Precision Controls Ltd.
for the latest news, views and reviews*