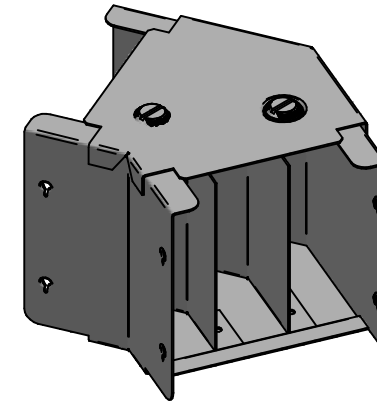
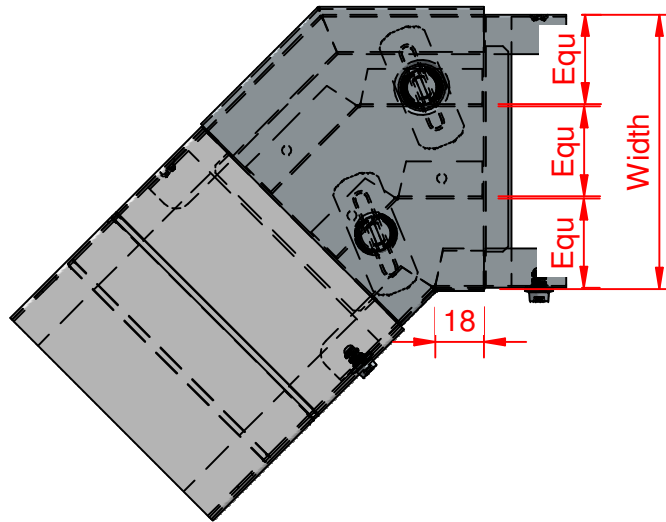


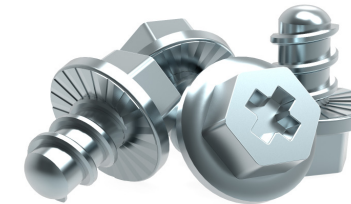


# QuickFix

Size	Width	Height
TE32x3	76.2	50.8
TE33x3	76.2	76.2
TE42x3	101.6	50.8
TE43x3	101.6	76.2
TE44x3	101.6	101.6
TE62x3	152.4	50.8
TE63x3	152.4	76.2
TE64x3	152.4	101.6
TE66x3	152.4	152.4
TE82x3	203.2	50.8
TE83x3	203.2	76.2
TE84x3	203.2	101.6
TE88x3	203.2	203.2
TE92x3	228.6	50.8
TE93x3	228.6	76.2
TE94x3	228.6	101.6
TE96x3	228.6	152.4
TE99x3	228.6	228.6



- ✓ Fast fitting **UniBolt** reduces installation time by as much as 80%
- ✓ **IP4X compliant** as standard
- ✓ **Completes the range** of fast fitting and innovative Cable Management Solutions



In accordance with Unitrunk's policy of continuous improvement, Unitrunk reserves the right to change specifications and designs without notice. Data is the copyright of Unitrunk Ltd and not to be reproduced or passed to a third party without written consent.

<b>Cable Trunking &amp; Ducting Standard</b> BS EN 50085-1 & BS EN 50085-2-1		<b>Material Standard</b> BS EN 10346 (Pre Galv)		<b>Quality Recognition</b>	
<b>Unitrunk Head Office:</b> 4 Altona Road, Lisburn, BT27 5QB +44 28 9262 5100   info@unitrunk.co.uk unitrunk.co.uk   unitrunk.ie		<b>Lid Fixing</b> Retained Toggle	<b>Torque Value</b> 3 N m		
		<b>Data Sheet Reference</b> 45° Bend Top Lid	<b>Revision</b> 2.01		



# UNITRUNK