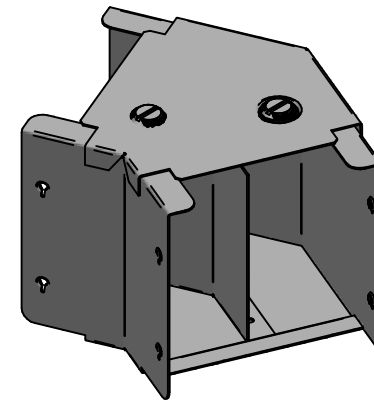
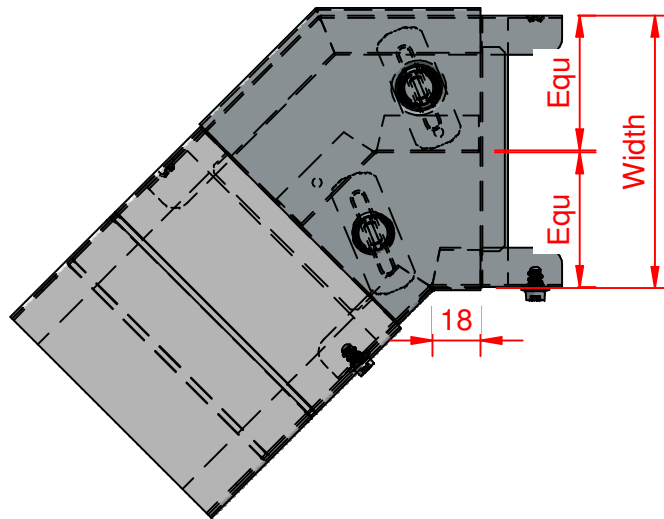


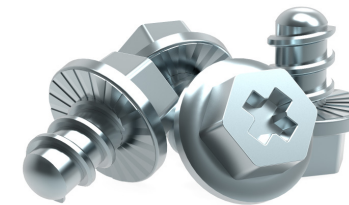


QuickFix

Size	Width	Height
TE22x2	50.8	50.8
TE32x2	76.2	50.8
TE33x2	76.2	76.2
TE42x2	101.6	50.8
TE43x2	101.6	76.2
TE44x2	101.6	101.6
TE62x2	152.4	50.8
TE63x2	152.4	76.2
TE64x2	152.4	101.6
TE66x2	152.4	152.4
TE82x2	203.2	50.8
TE83x2	203.2	76.2
TE84x2	203.2	101.6
TE88x2	203.2	203.2
TE92x2	228.6	50.8
TE93x2	228.6	76.2
TE94x2	228.6	101.6
TE96x2	228.6	152.4
TE99x2	228.6	228.6



- ✓ Fast fitting **UniBolt** reduces installation time by as much as 80%
- ✓ **IP4X compliant** as standard
- ✓ **Completes the range** of fast fitting and innovative Cable Management Solutions



In accordance with Unitrunk's policy of continuous improvement, Unitrunk reserves the right to change specifications and designs without notice. Data is the copyright of Unitrunk Ltd and not to be reproduced or passed to a third party without written consent.

Cable Trunking & Ducting Standard BS EN 50085-1 & BS EN 50085-2-1	Material Standard BS EN 10346 (Pre Galv)		Quality Recognition	
	Unitrunk Head Office: 4 Altona Road, Lisburn, BT27 5QB +44 28 9262 5100 info@unitrunk.co.uk unitrunk.co.uk unitrunk.ie	Lid Fixing Retained Toggle	Torque Value 3 N m	
Data Sheet Reference 45° Bend Top Lid	Revision 2.01			



UNITRUNK