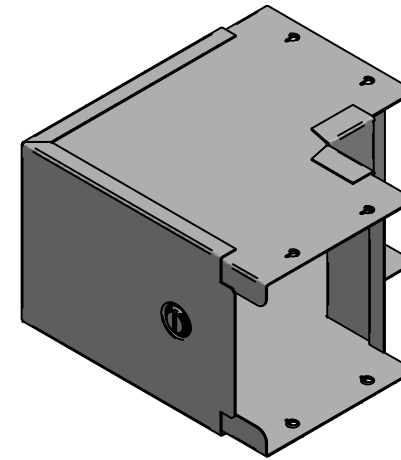
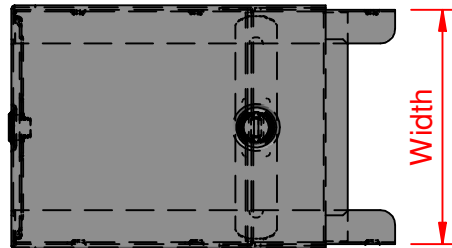
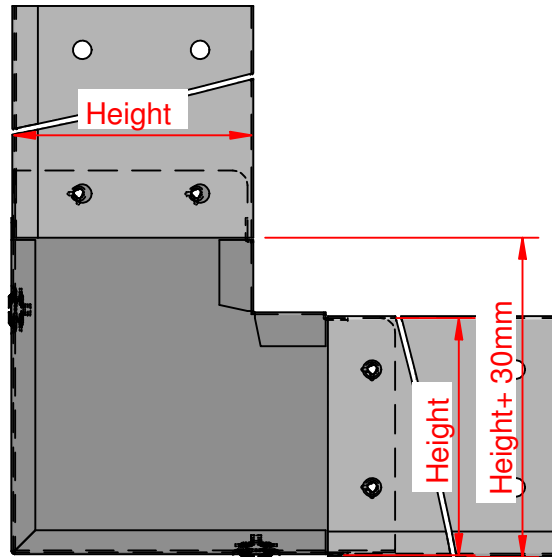


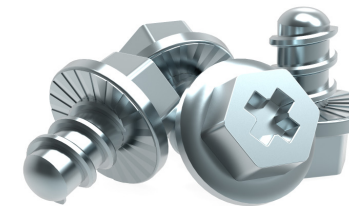


# QuickFix





Size	Width	Height
SOE22	50.8	50.8
SOE32	76.2	50.8
SOE33	76.2	76.2
SOE42	101.6	50.8
SOE43	101.6	76.2
SOE44	101.6	101.6
SOE62	152.4	50.8
SOE63	152.4	76.2
SOE64	152.4	101.6
SOE66	152.4	152.4
SOE82	203.2	50.8
SOE83	203.2	76.2
SOE84	203.2	101.6
SOE88	203.2	203.2
SOE92	228.6	50.8
SOE93	228.6	76.2
SOE94	228.6	101.6
SOE96	228.6	152.4
SOE99	228.6	228.6



- ✓ Fast fitting **UniBolt** reduces installation time by as much as 80%
- ✓ **IP4X compliant** as standard
- ✓ **Completes the range** of fast fitting and innovative Cable Management Solutions



In accordance with Unitrunk's policy of continuous improvement, Unitrunk reserves the right to change specifications and designs without notice. Data is the copyright of Unitrunk Ltd and not to be reproduced or passed to a third party without written consent.

Cable Trunking & Ducting Standard	Material Standard		Quality Recognition	
BS EN 50085-1 & BS EN 50085-2-1	BS EN 10346 (Pre Galv)		 	
<b>Unitrunk Head Office:</b> 4 Altona Road, Lisburn, BT27 5QB +44 28 9262 5100   info@unitrunk.co.uk <b>unitrunk.co.uk   unitrunk.ie</b>	Lid Fixing	Torque Value	 	
	Retained Toggle	3 N m		
	Data Sheet Reference	Revision		
	Sharp Bend Outside Lid	2.01		



# UNITRUNK