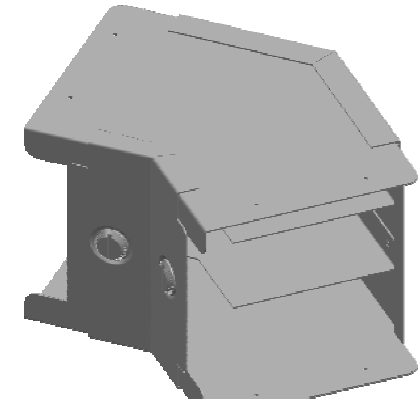
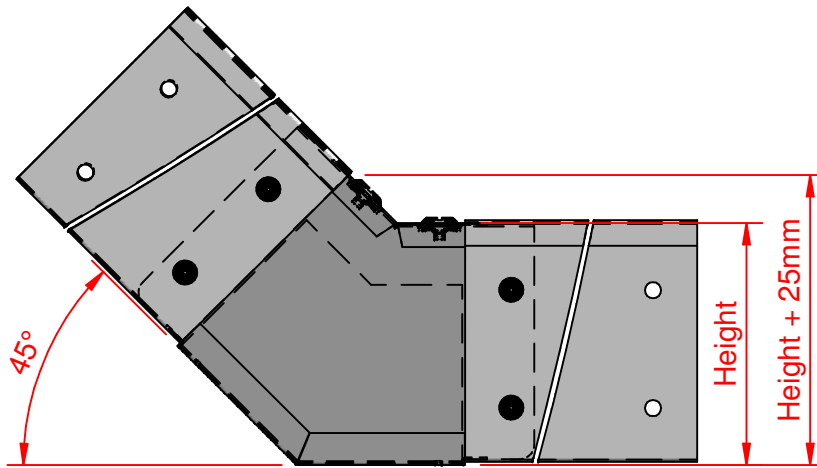


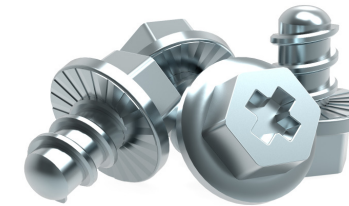
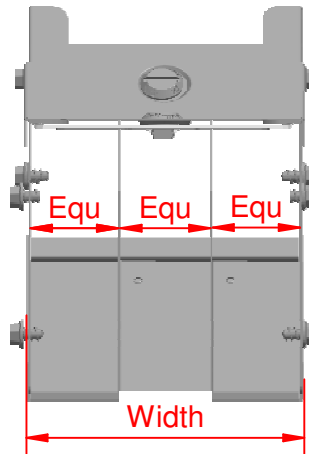


# QuickFix

Size	Width	Height
IE32x3	76.2	50.8
IE33x3	76.2	76.2
IE42x3	101.6	50.8
IE43x3	101.6	76.2
IE44x3	101.6	101.6
IE62x3	152.4	50.8
IE63x3	152.4	76.2
IE64x3	152.4	101.6
IE66x3	152.4	152.4
IE82x3	203.2	50.8
IE83x3	203.2	76.2
IE84x3	203.2	101.6
IE88x3	203.2	203.2
IE92x3	228.6	50.8
IE93x3	228.6	76.2
IE94x3	228.6	101.6
IE96x3	228.6	152.4
IE99x3	228.6	228.6



- ✓ Fast fitting **UniBolt** reduces installation time by as much as 80%
- ✓ **IP4X compliant** as standard
- ✓ **Completes the range** of fast fitting and innovative Cable Management Solutions



In accordance with Unitrunk's policy of continuous improvement, Unitrunk reserves the right to change specifications and designs without notice. Data is the copyright of Unitrunk Ltd and not to be reproduced or passed to a third party without written consent.

<b>Cable Trunking &amp; Ducting Standard</b> BS EN 50085-1 & BS EN 50085-2-1	<b>Material Standard</b> BS EN 10346 (Pre Galv)		<b>Quality Recognition</b>	
<b>Unitrunk Head Office:</b> 4 Altona Road, Lisburn, BT27 5QB +44 28 9262 5100   info@unitrunk.co.uk unitrunk.co.uk   unitrunk.ie	<b>Lid Fixing</b> Retained Toggle	<b>Torque Value</b> 3 N m		
	<b>Data Sheet Reference</b> 45° Bend Inside Lid	<b>Revision</b> 2.01		



# UNITRUNK