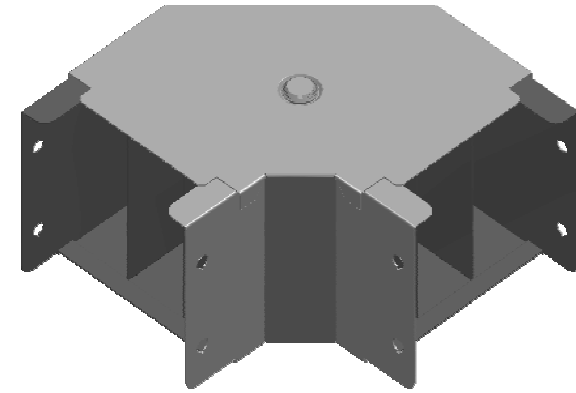
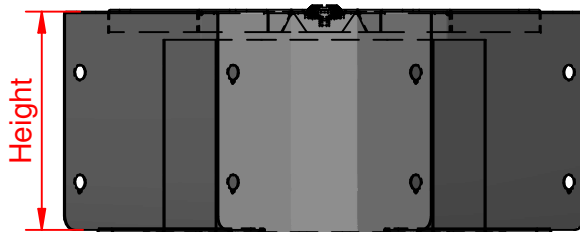
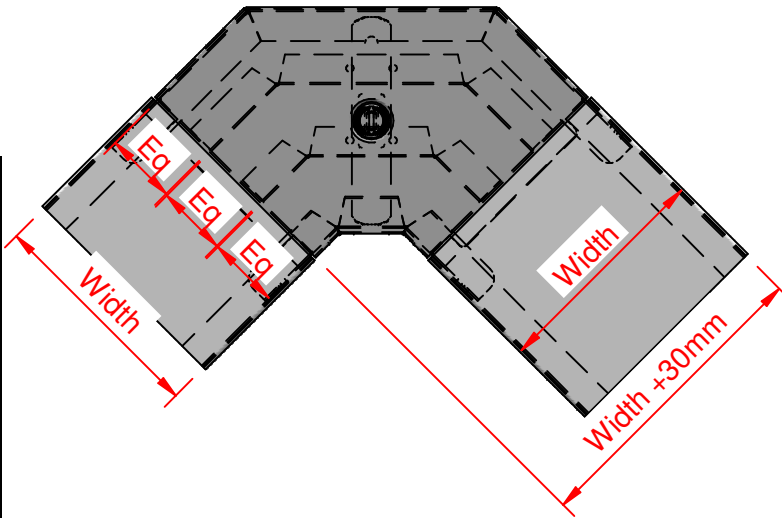


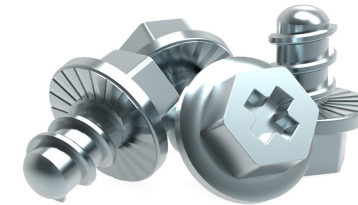


# QuickFix

Size	Width	Height
GTB32x3	76.2	50.8
GTB33x3	76.2	76.2
GTB42x3	101.6	50.8
GTB43x3	101.6	76.2
GTB44x3	101.6	101.6
GTB62x3	152.4	50.8
GTB63x3	152.4	76.2
GTB64x3	152.4	101.6
GTB66x3	152.4	152.4
GTB82x3	203.2	50.8
GTB83x3	203.2	76.2
GTB84x3	203.2	101.6
GTB88x3	203.2	203.2
GTB92x3	228.6	50.8
GTB93x3	228.6	76.2
GTB94x3	228.6	101.6
GTB96x3	228.6	152.4
GTB99x3	228.6	228.6



- ✓ Fast fitting **UniBolt** reduces installation time by as much as 80%
- ✓ **IP4X compliant** as standard
- ✓ **Completes the range** of fast fitting and innovative Cable Management Solutions



In accordance with Unitrunk's policy of continuous improvement, Unitrunk reserves the right to change specifications and designs without notice. Data is the copyright of Unitrunk Ltd and not to be reproduced or passed to a third party without written consent.

<b>Cable Trunking &amp; Ducting Standard</b> BS EN 50085-1 & BS EN 50085-2-1		<b>Material Standard</b> BS EN 10346 (Pre Galv)		<b>Quality Recognition</b>	
<b>Unitrunk Head Office:</b> 4 Altona Road, Lisburn, BT27 5QB +44 28 9262 5100   info@unitrunk.co.uk unitrunk.co.uk   unitrunk.ie		<b>Lid Fixing</b> Retained Toggle	<b>Torque Value</b> 3 N m		
		<b>Data Sheet Reference</b> Gusset Bend Top Lid	<b>Revision</b> 2.01		



# UNITRUNK