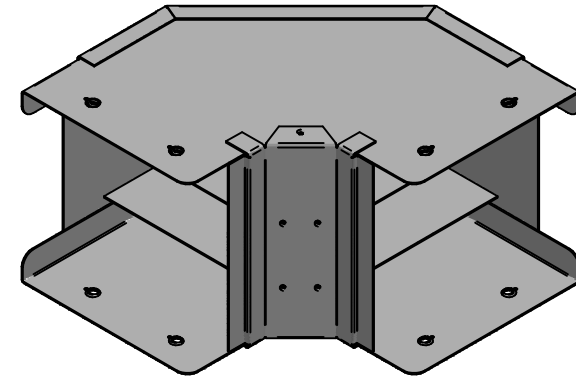
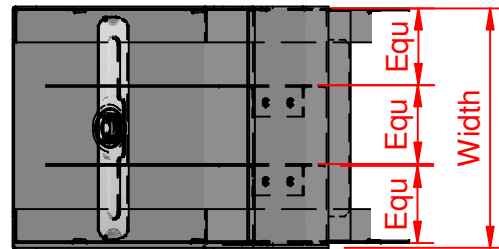
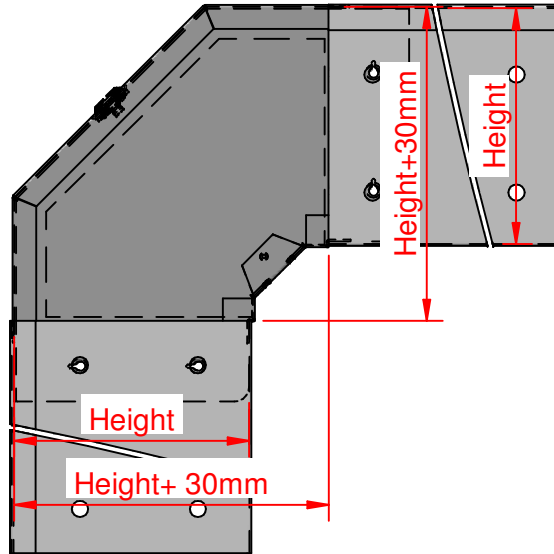


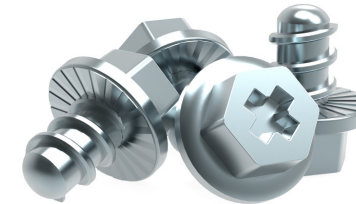


# QuickFix

GOB22x3	50.8	50.8
GOB32x3	76.2	50.8
GOB33x3	76.2	76.2
GOB42x3	101.6	50.8
GOB43x3	101.6	76.2
GOB44x3	101.6	101.6
GOB62x3	152.4	50.8
GOB63x3	152.4	76.2
GOB64x3	152.4	101.6
GOB66x3	152.4	152.4
GOB82x3	203.2	50.8
GOB83x3	203.2	76.2
GOB84x3	203.2	101.6
GOB88x3	203.2	203.2
GOB92x3	228.6	50.8
GOB93x3	228.6	76.2
GOB94x3	228.6	101.6
GOB96x3	228.6	152.4
GOB99x3	228.6	228.6



- ✓ Fast fitting **UniBolt** reduces installation time by as much as 80%
- ✓ **IP4X compliant** as standard
- ✓ **Completes the range** of fast fitting and innovative Cable Management Solutions



In accordance with Unitrunk's policy of continuous improvement, Unitrunk reserves the right to change specifications and designs without notice. Data is the copyright of Unitrunk Ltd and not to be reproduced or passed to a third party without written consent.

Cable Trunking & Ducting Standard	Material Standard		Quality Recognition	
BS EN 50085-1 & BS EN 50085-2-1	BS EN 10346 (Pre Galv)			
<b>Unitrunk Head Office:</b> 4 Altona Road, Lisburn, BT27 5QB +44 28 9262 5100   info@unitrunk.co.uk unitrunk.co.uk   unitrunk.ie	Lid Fixing	Torque Value		
	Retained Toggle	3 N m		
	Data Sheet Reference	Revision		
	Gusset Bend Outside Lid	2.01		



# UNITRUNK