



Quantec

Addressable Call System

Features, Operation & Devices

Key features

specify with

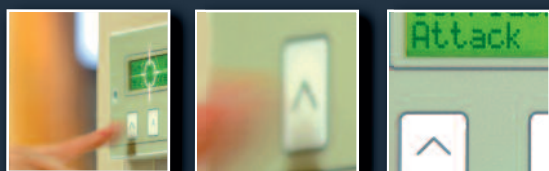
Confidence

Quantec is a powerful yet easy to use addressable call system that helps ensure vital communication throughout a building. In environments where efficiency is paramount, Quantec delivers, helping save staff time, minimising disturbance and improving the quality of patient, customer or employee care.

Whatever the application - be it a call system for a nursing home, hospital, hotel or leisure centre or a staff protection system for a high dependency unit, prison, factory, shop, school or council office - Quantec is the obvious choice.

With its flexible call routing, multiple call levels, a unique data protocol that works down just two wires and a laptop programmable system controller, Quantec can be tailored to suit the exact operational needs of any building. For example, calls can be routed to different parts of a site at different times of the day and unanswered calls can be set to transfer to other areas after a pre-determined time.

As well as a huge range of cost-effective call points, ceiling pulls, displays, monitoring points, sounders, neck pendants and infrared transmitters, the system includes a host of industry-leading features. Read on for further information.



Applications

Nursecall • Dementia Care • Staff Protection
Emergency Assistance • Cell Call • Affray

Locations

Care Homes • Hospitals • GP Surgeries • Hotels
Leisure Centres • Shops • Offices • Factories



Multiple call levels

Including standard call, ensuite, help required, emergency, staff attack, presence and attendance.

Flexible call routing

Quantec can be tailored to suit your exact operational requirements, whatever they may be.

Call accept

Saves valuable time by preventing more than one member of staff responding to the same call.

Automatic call divert

Transfers any unanswered calls to other areas to ensure they are responded to within a pre-determined time.

Follow-me lights

Illuminates overdoor lights and corridor lights in sequence to visually guide staff to the source of a call.

Staff presence

Helps managers, matrons and carers locate their colleagues by showing where they are working.

Staff attendance

Allows staff to log their attendance when visiting a room via a special infrared pendant

Night mode

Allows Quantec to work in a totally different way at night, providing for fewer staff and reduced sound levels.

Call follower sounders

Informs staff that other calls are waiting by sounding a soft tone in all occupied rooms.

'User ID'

Allows a patient's infrared neck/wrist pendant or a member of staff's attendance or security transmitter to be given a unique User ID and name

Free built-in datalogger

Records the date, time, type and location of every call and reset for output to a serial printer.

Optional data analysis software

Allows managers to output reports on call response times, busiest shifts, most visited rooms, etc, to a desktop PC.

Optional paging facilities

Optional alphanumeric and tone-only paging facilities available for carers on the move.

DECT capability

Allows call messages to be directed to many third-party DECT telephone systems.

Device monitoring

Quantec constantly supervises all network devices and informs you of any problems, reducing maintenance time and costs.

Laptop programmable system controller

Allows Quantec to adapt to your changing requirements with no expensive rewiring, no mess and no fuss.

Easy to install & expand

Quantec's 'two wire' data transfer system makes it ideal for new and established sites where existing wiring can often be utilised.

Universal programming devices

Allows optional third-party switch assemblies to be interfaced to Quantec for optional compliance with HTM 08-03

Infrared staff protection

Quantec's optional infrared security transmitters can help protect staff against disturbed patients, intruders and aggressive visitors.

Tried, trusted & respected

From large NHS trusts to renowned nursing home groups, Quantec is specified by some of the UK's most prestigious care providers.

Quality accreditation

Quantec is manufactured by C-TEC, an ISO 9001 accredited company with over 30 years experience of making life safety products for the care industry.

Operation

Below is a brief overview of how Quantec works when all of its features and call levels are utilised. We recommend you read this section in its entirety as using Quantec to its full potential can save organisations thousands of pounds, protect staff, save time, minimise disturbance, improve efficiency and, where relevant, enhance the quality of patient care.

STANDARD CALLS

To trigger a standard call, the user presses the 'CALL' button on a call point, pulls the cord of a ceiling pull, operates the remote button of a tail call lead or activates the call button on an infrared neck or wrist pendant. This causes the call point's confidence light to pulse red slowly.



Outside the room, sounders pulse slowly, overdoor lights (if fitted) pulse red and all relevant displays show the exact location of the calling room.

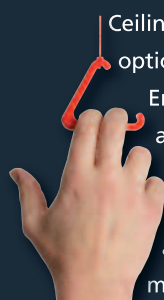


If the call was generated using an infrared neck/wrist pendant via an infrared call point, the user's ID or name can also be programmed to appear on displays.



ENSUITE CALLS

Ceiling pulls in bathrooms or WCs can be optionally programmed to generate a distinct Ensuite Call. As calls made from Ensuite areas are often considered a higher priority than Standard calls, a more urgent alarm sounds, overdoor lights (if fitted) pulse more quickly and a distinct Ensuite message appears on all relevant displays together with the location of the calling room.



CALL ACCEPT

When a Standard or Ensuite call is shown on several displays at the same time, several staff may respond simultaneously. To help prevent this, a member of staff can accept the call at a display by pressing its 'A' button. This will remove the call from all displays (but for safety reasons the call will return if it is not dealt with within a pre-set time).



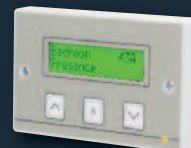
STAFF PRESENCE



When a member of staff arrives at the calling room, the call point's 'RESET' button is pressed to cancel the call and to put the call point into Presence mode.



This causes the call point's confidence light to pulse green slowly. Outside the room overdoor lights (if fitted) pulse green slowly and all relevant displays show the location of the room where staff are present.



CALL FOLLOWER SOUNDERS

If fitted, low level sounders can be programmed to sound at all call points in Presence mode when a call occurs elsewhere on the system. This helps reduce sound levels by quietly informing staff that other calls are waiting, prompting them to visit a display, a particularly useful function for care staff working night shifts.



RESET

As the member of staff leaves the room the call point's 'RESET' button is pressed again to take it out of Presence mode and return it to normal. (If preferred, magnetic reset call points can be used with magnetic reset keys).



HELP REQUIRED CALLS

If assistance is required (but it is not an emergency), pressing the call point's 'CALL' button whilst it is in Standard Call, Ensuite Call or Presence mode makes a Help Required call.



This causes the call point's confidence light to pulse red more urgently than when a Standard call is made.



Outside the room, sounders pulse more urgently, overdoor lights (if fitted) pulse red and a Help Required message appears on all relevant displays together with the location of the room where help is required.



EMERGENCY CALLS

In an emergency, pressing the call point's 'CALL' and 'RESET' buttons together makes an Emergency call regardless of the previous state of the call point (unless in Attack mode, see page 6).



This causes the call point's confidence light to flash red and green. Outside the room, sounders pulse rapidly, overdoor lights (if fitted) flash red and green and an

emergency message appears on all relevant displays together with the location of the calling room.



PATIENT MOVEMENT, BED WET AND EQUIPMENT MONITORING

For patients with dementia or incontinence, at sites where security is an issue or in areas where equipment needs monitoring, calls can be generated automatically via bed exit mats, enuresis/bed wet sensors, passive infrared sensors (PIRs), magnetic door contacts or any other device with a normally open or closed switch.



Such equipment is interfaced to Quantec via a monitoring point, a call point's remote socket, a PIR power interface, an Enuresis/bed exit interface or a universal programming device (as appropriate), all of which can be setup to generate different levels of call on activation.

STAFF ATTACK CALLS

To help combat the threat of verbal and physical abuse against members of staff, Quantec has an optional staff attack call level which helps protect staff against disturbed patients, intruders and/or aggressive visitors.

Attack calls can be generated in a number of ways:-

- By activating a special Infrared/Radio staff attack transmitter (pictured above) that is typically worn by staff on their uniforms.
- By activating hard-wired panic buttons (right) that have been programmed to generate attack calls.



Infrared staff attack calls work as follows:-

Designated staff carry a personal transmitter which they attach to their uniforms. When an attack takes place, they activate the transmitter to fill the area with infrared signals.



These signals are picked up by a special infrared call point or ceiling receiver which instantly informs Quantec that an attack is taking place.



An urgent, piercing alarm is sounded throughout the building (as programmed), overdoor lights (if fitted) flash red and green and the exact

location of the attack is indicated at all relevant displays (together with the transmitter's User ID, if programmed) for the swift response of security staff.



Should the attack spill over into another room, Quantec will analyse the transmitter's User ID and only display the current location of the attack to ensure help arrives exactly where it is required.

If staff protection is also required in outside areas such as car parks where infrared transmission is not practical, Quantec's transmitters can also be configured to generate a radio attack call. Radio attack calls are picked up by special radio receivers which inform Quantec that an attack is taking place in the same way as infrared attack calls.

For security reasons Attack calls can only be reset by entering a special code at the Quantec Controller or a Display with controls.



ATTENDANCE CALLS

Quantec's Attendance Call level allows nursing or security staff entering rooms during night shifts, etc., to log their 'Attendance' using a special infrared Attendance pendant. Upon activation, the infrared call point or ceiling receiver that picks up the Attendance call flashes to confirm the call has been registered.



Attendance calls do not show on displays but are logged (together with the attendee's User ID) in Quantec's onboard

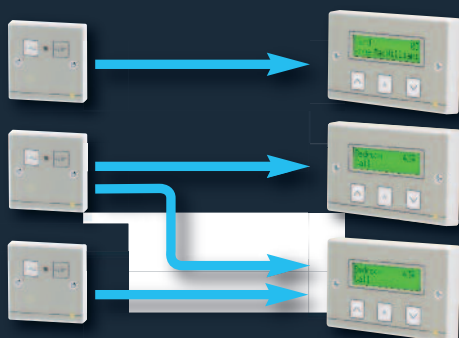
datalogger or optional Surveyor Data Management



Software, allowing management to monitor which staff are performing their duties and to reassure users, relatives and regulatory authorities that patients and/or buildings are being checked periodically.

FLEXIBLE CALL ROUTING

The default operation for Quantec is for all calls to be shown on all displays. However in larger buildings it is not uncommon for certain staff to be responsible for certain parts of the building only (such as individual wings of a nursing home or different floors in a hotel). To help meet this requirement Quantec can be programmed to route certain 'areas' of call points to certain 'groups' of displays, effectively allowing many individual call systems to be created in one.



DAY/NIGHT MODE

Night mode can be manually selected by the user or, if preferred, the commissioning engineer can allocate times at which the system will automatically enter and exit night mode. When in night mode, all calls are shown on all displays but only selected displays sound. This allows for lower staffing levels and reduced sound levels. Night mode can be backed up by Quantec's optional CALL FOLLOWER SOUNDER feature (see page 5).

AUTOMATIC DIVERT

To ensure calls are not left unattended for long periods, Quantec can be optionally set to automatically divert calls to other areas after 1 to 8 minutes.

MANUAL DIVERT

If a member of staff is busy or needs to leave an area they can divert calls to another area manually using the controls on a display to ensure relevant calls are dealt with by other members of staff.



PAGING

Two types of radio paging can be added to Quantec.

Quantec's 'Tone Only' paging option is a very basic facility designed to indicate that a call has been raised. No priority is given to the level of call, i.e. if a standard call is flagged before an emergency call, the pager will not show the emergency call until the standard call clears, and staff must visit a display to determine the exact location of a call.

Quantec's Alphanumeric paging option is much more sophisticated and allows call information to be broadcast to alphanumeric pagers via a radio transmitter. For example, messages can be sent to different pagers dependent on the level of call, the area the call came from and whether the call is made during the day or at night to accommodate lower staffing levels. An optional re-paging facility can also be selected to ensure calls do not remain unanswered for extended periods of time.



DECT TELEPHONE CAPABILITY

As an alternative to alphanumeric paging (described above), Quantec's call messages can be directed to many third-party DECT telephone systems. Output options are exactly the same as those described for alphanumeric paging. For compatibility advice, please contact our Technical Department.

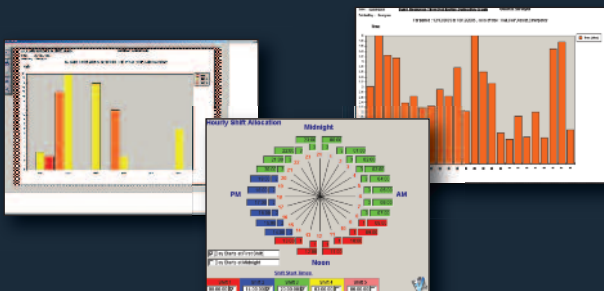
DATALOGGING

Quantec's built-in datalogger can record the date, time, type and location of every call and reset for output to a Quantec Printer Kit (part no. QT600P). It will also log (if relevant), Attendance calls and any transmitters or pendants that have low batteries.

SURVEYOR DATA MANAGEMENT SOFTWARE

All aspects of call system activity can be optionally output to a PC running Quantec's powerful Surveyor data management software (part no. QT707S). Specifically designed to help managers and building owners take tighter control of their care facilities, Surveyor displays 'real-time' call, reset and room occupancy information and allows detailed data analysis reports to be generated on longest calls, most visited rooms, busiest shifts, average call response times and more.

Surveyor is an invaluable source of reference for evaluating staff performance, reviewing patient demands and determining optimum labour levels/shift patterns and has been known to save organisations thousands of pounds.



PROGRAMMABLE CALL POINTS, TRANSMITTERS AND PENDANTS

If required, Quantec's addressable call points, infrared transmitters and neck/wrist pendants can be optionally programmed using a QT423 Configurator and its associated PC software to suit a specific application. For example:-



- A Call Point's CALL button, remote socket and two slave inputs can be individually programmed to make Standard, Ensuite, Help Required, Emergency or Attack calls on initial activation and its RESET button can be programmed to bypass the Presence call state.



- A Staff Attack Transmitter's buttons or 'pull snap' can be individually programmed to make Standard, Presence, Attendance, Help Required, Emergency, Attack or Reset calls.



- A Patient Neck or Wrist Pendant's button can be programmed to make Standard, Presence, Help Required or Reset calls.



- A Staff Attendance Pendant's button can be programmed to make Standard, Attendance, Presence, Help Required or Reset calls.



All transmitters and pendants can also be assigned a 16 character User ID which can be selected to appear on the system's displays or in Quantec's Surveyor data management software when a call is made.

It is important to note that changing a device's default operation can affect the operation of the system as a whole and that the System Operation overview in this Guide may no longer apply exactly as detailed.

DEMENTIA CARE SOLUTIONS

Note that a wide range of Quantec dementia care solutions are now available - see page 13 for further details.

Devices and Components

A comprehensive range of Quantec addressable, slave and ancillary devices are available.

Up to 255 addressable devices (and an even larger number of slave and ancillary devices) can be connected to a Quantec system. In practice, systems can range from having just a handful of addressable devices (say, for a building that requires communication facilities in its disabled persons toilets only) to systems with in excess of 200 devices (for buildings requiring nursecall and infrared staff protection facilities).

As all addressable devices are soft-addressed, no consideration needs to be given to how they will interact until system programming. System wiring, however, must be made in a 'Spine' and 'Limb' configuration using one or more of our QT603 Network Splitters - for further details on system design, planning, installation and commissioning please refer to our separate Quantec Design Guide.

Our current range of Quantec addressable, slave and ancillary devices is detailed on the following pages.

QUANTEC CONTROLLER

- ▶ Supplies power to the system, monitors all network devices and manages the routing and distribution of all calls.
- ▶ Provides connections for network wiring, standby batteries, laptops (for system programming), alphanumeric paging/DECT equipment, a printer (to print datalogging information) and a PC (to run Quantec's **QT707S** Surveyor data management software).
- ▶ Includes a library of 40 pre-set & 45 custom place names.



QT601-2

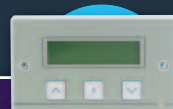


QT603

- ▶ System setup requires a laptop PC running Quantec's **QT707** programming tools.
- ▶ Can be mounted semi-flush using an **AFP385** bezel or fully-flush using a **BF359/3S** stainless steel enclosure.
- ▶ System wiring requires one or more **QT603** network splitters. Wiring should be made in a spine and limb arrangement using 1.5 to 2.5mm² T&E (spines) and 4 to 8 core stranded security cable (limbs).

DISPLAYS

- ▶ Used to indicate incoming calls in staff rooms, corridors, nursing stations, etc.
- ▶ Show call type, call location and (depending on the device used to make the call) the User ID or name of the person calling.
- ▶ Highest priority calls are shown first with a message saying how many calls are waiting.
- ▶ Flash and beep rates intensify to reflect the urgency of incoming calls.



QT608C



QT608CD1/S

- ▶ **QT608C** Display has an onboard sounder and buttons to accept, scroll & divert calls.
- ▶ **QT608CD** Display has an onboard sounder but no controls.
- ▶ **QT608CD1/S** Large Corridor Display provides visual call indication only and connects to the system via a **QT615/S** Display Interface.
- ▶ A range of stainless steel displays are also available - see page 14 for details.

ADDRESSABLE OVERDOOR LIGHTS & SOUNDERS

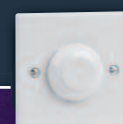
- ▶ Designed to increase call indication levels in large sites.
- ▶ **QT606A** addressable overdoor lights include an onboard sounder and can be programmed to illuminate when certain groups of call points are calling - ideal for area indication or to provide 'follow me' lights at the ends of corridors, etc.



QT606A



QT688



QT688/2

- ▶ **QT688** Standard sounders include Quantec's default call tones and a volume control.
- ▶ **QT688/2** Hi-output sounders operate at up to 85dB and can be programmed with a wide selection of alarm tones using a **QT423** configurator (default operation utilises Quantec's standard tones, special tones include HTM08-03 variants)

ADDRESSABLE CALL POINTS

- ▶ A wide range of call points with two buttons (Call & Reset) and confidence lights.
- ▶ Can make up to 7 levels of call - Standard, Ensuite, Help Required, Emergency, Attack, Presence & Attendance.
- ▶ Button and Magnetic reset options available with one or more of the following features:-
 - A remote socket for connecting tail call leads, etc.
 - An onboard sounder for utilising Quantec's "Call Follower" option.



QT602 Range



QT609 Range



QT602E Range

- An infrared receiver to accept calls from infrared transmitters or pendants.
- ▶ All variants include connections for slave overdoor lights, ceiling pulls, slave call points & slave IR receivers.
- ▶ Can be programmed to operate in many different ways using a QT423 configurator.
- ▶ See page 14 for a full list of Quantec addressable call points - including stainless steel variants.

INFRARED CEILING RECEIVERS

- ▶ Designed to accept infrared calls from Quantec's staff attack transmitters, patient neck/wrist pendants and staff attendance pendants.
- ▶ Typically used in bedrooms, corridors, common rooms and any other area requiring infrared coverage.
- ▶ QT302RX master receivers include a red confidence light.
- ▶ Up to three QT302RXS slave receivers can be connected to a master ceiling receiver or addressable call point (any variant, including non-IR) to increase coverage



QT302RX



QT302RXR



QT302RT

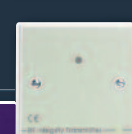
- ▶ Round QT302RXR Master and QT302RXRS Slave infrared ceiling receivers are also available, finished in white plastic.
- ▶ Typical receiving range of all IR ceiling receivers = 10m line of sight.
- ▶ QT302RT test receiver allows transmitters and pendants to be locally tested for correct operation without activating the entire system.

RADIO RECEIVERS

- ▶ Designed to accept radio frequency (RF) calls from Quantec's staff attack transmitters & patient pendants.
- ▶ QT422RX receivers are designed to be internally mounted and provide up to 60m RF coverage in communal gardens, car parks, etc.
- ▶ Optional QT422RXEX external mounting aerial can extend coverage to up to 90m.



QT422RX



QT421

- ▶ Optional QT421 RF Integrity transmitter available to send periodic test transmissions to a QT422RX receiver (we recommend at least one is used per receiver)
- ▶ In large areas multiple radio receivers can be used to ensure sufficient coverage.
- ▶ For sites with multiple, separately-manned areas, an RF Grouping facility allows different radio receivers to respond to calls from certain transmitters only.

MONITORING POINTS

- ▶ Can be setup to generate a standard or emergency call when a fire exit or drug cupboard is opened (via magnetic contacts) or a telephone or door bell rings.
- ▶ Can be used to monitor any device with a normally open or normally closed switch such as strip switches, flow switches, panic attack buttons and more.
- ▶ Include a reset button, red/green confidence light and isolation keyswitch.



QT604



QT645



QT638

- ▶ Button (QT604) and magnetic (QT604M) versions available.
- ▶ For PIR monitoring, note that a special QT645 PIR Power Interface is now available c/w an isolation keyswitch (QT645s connect to Quantec via an addressable call point and provide power to up to two QT638 PIRs without the need for a separate PSU)

UNIVERSAL PROGRAMMING DEVICES

- ▶ A range of small multi-purpose programmable devices that can be programmed to operate in a multitude of ways using a QT423 configurator.
- ▶ QT611 universal devices allow third-party switch assemblies and indicators to be interfaced to Quantec for use as call points, monitoring points or day/night switches.



QT611



QT612



QT423

- ▶ QT612 relay output devices provide a zone-specific 30V 1A relay output that can be used to trigger third party strobes, CCTV cameras, auto-diallers, building management systems and more.
- ▶ QT613 zonal indicator drivers and QT614 bedhead light dimmer interfaces are also available.
- ▶ Devices measure just 56mm square and 22mm deep making them ideal for use behind third party switch assemblies, etc.

INFRARED/RADIO TRANSMITTERS & PENDANTS

- ▶ Allow patients and staff to remotely trigger calls via Quantec's infrared call points, ceiling receivers & radio receivers. Four variants are available:-
- ▶ QT412 Rechargeable staff attack transmitters - allow staff in high-risk environments to generate 'attack' calls
- ▶ QT432 Patient neck pendants with anti-ligature lanyards - allow patients to trigger 'standard' calls
- ▶ QT432W Patient wrist pendants with adjustable wrist straps - allow patients to trigger 'standard' calls



QT412



QT432



QT432W

- ▶ QT432A Staff Attendance pendants - allow staff entering rooms to log their attendance in Quantec's datalogger or Surveyor software.
- ▶ All variants can be optionally programmed with a unique User ID using a QT423 configurator. Different call levels can also be assigned to certain models to suit the application.
- ▶ Various charger options available for QT412 transmitters.
- ▶ QT432 range pendants have user-replaceable batteries.

SLAVE CEILING PULLS, CALL POINTS & OVERDOOR LIGHTS



QT607



QT606

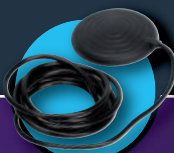


QT602D

- ▶ Can be interfaced to an addressable call point's inputs and outputs to increase call generation and/or call indication options.
- ▶ **QT607** slave ceiling pulls include a confidence light, 3m of cord and two triangular pulls and are typically used in ensembles or WCs.
- ▶ **QT602D** slave call points are typically located in large bedrooms/communal areas.

- ▶ **QT606** slave overdoor lights are typically located outside rooms and include two ultra-bright LEDs in a triangular diffuser.
- ▶ Many other devices can be interfaced to a Quantec addressable call point including panic buttons, slave infrared ceiling receivers, Enuresis (bedwet) sensors, PIR power interfaces and more.
- ▶ Ask about our new NCP-13 wipe-clean anti-bacterial ceiling pull cords - contact our sales desk for details.

ANCILLARY CALLING DEVICES



NC805P



NC806C/5



QT644

- ▶ A range of ancillary calling devices that can be interfaced to Quantec via a call point's remote socket, including:-
- ▶ **NC806C/6** 6ft tail call buttons
- ▶ **NC805C/14** 14ft tail call buttons
- ▶ **NC805D** 4-12ft tail call buttons
- ▶ **NC805P** Hand/foot operated pneumatic pads for people who find it difficult to press buttons (must be used in conjunction with an **NC805AS** air switch).

- ▶ **QT644** Floor pressure mat (90 x 60cm) - typically positioned alongside a bed and designed to trigger a call when patient foot pressure is detected
- ▶ **NC805MD** movement detectors - designed to sit under the leg of a bed and trigger a call when the bed is vacated.
- ▶ Additional options are also available - see Dementia Care Solutions section below for details.

DEMENTIA CARE SOLUTIONS



QT630



QT637



QT636

Quantec now includes a range of equipment specifically designed to enhance the level of care for people suffering from dementia and other degenerative illnesses, including:-

- ▶ The **QT630** Dementia care controller - for use in specialist dementia care bedrooms. Includes all of the inputs, outputs, timers and power needed for the connection of **QT638** PIRs, **QT637** enuresis/bed exit interfaces, **QT639** LED lights and more. Can be configured to operate in a multitude of ways to suit the application (e.g. to automatically switch lights on and off when movement is detected to guide patients to and from ensuite areas).

As well as being compatible with our QT630 dementia care controller, the following devices can connect to existing Quantec systems via a compatible addressable call point:-

- ▶ **QT637** Enuresis/Bed Exit interface socket (includes two remote jack sockets, one for a **QT635** enuresis (bedwet) sensor and one for a **QT633** bed exit mat).
- ▶ **QT636** Interface unit c/w remote socket (can be configured to accept n/o or n/c ancillary devices such as **QT633** bed exit mats, **QT634** chair exit mats, etc.).

See 'Monitoring Points' for details of our **QT645** PIR power interface.

QUANTEC CONTROLLERS & INSTALLATION AIDS

| | |
|-----------|---|
| QT601-2 | Quantec controller (space for 2 x 7Ah batteries) |
| AFP385 | Flush bezel for Quantec controller |
| BF359/3S | Stainless steel glazed enclosure for QT601-2 requires BF359/3CL or 3SL lock kit |
| BF359/3CL | Cam lock kit for BF359/3S |
| BF359/3SL | Electromagnetic solenoid lock kit for BF359/3S |
| QT603 | Quantec network splitter |

QUANTEC PROGRAMMING SOFTWARE

| | |
|------------|---|
| QT707 | Quantec upload/download programming software (Windows XP/Vista/7). Includes programming lead |
| SAF7070000 | Programming lead ONLY |
| BF232 | RS232 to USB convertor (allows SAF7070000 to connect to a PC's USB connector) |
| QT423 | Quantec configurator c/w lead, adaptor & software (Windows XP/Vista/7). Used to program special functions on addressable call points, universal programming devices, hi-output sounders, IR/RF transmitters & IR/RF pendants) |
| QT423A | Configurator adaptor (allows existing QT423 configurators to program call points) |
| QT707S | Surveyor Data Management Software (Windows XP/Vista/7). Includes wall socket & lead |

QUANTEC DISPLAYS

| | |
|------------|---|
| QT608C | Quantec corridor display, with controls |
| QT608CD | Quantec corridor display, no controls |
| SPE0614000 | Quantec s/steel corridor display, with controls |
| SPE0633000 | Quantec s/steel corridor display, no controls |
| QT608CD15 | Quantec large corridor display (965x163x68mm) requires 1 x QT6155 display interface |
| QT6155 | Quantec display interface (for use with QT608CD15) |

QUANTEC OVERDOOR LIGHTS & SOUNDERS

| | |
|------------|--|
| QT606 | Quantec slave overdoor light |
| QT606A | Quantec addressable overdoor light c/w sounder |
| SPE0656000 | Quantec s/steel addressable overdoor light c/w sounder, double gang |
| QT688 | Quantec addressable sounder |
| QT688/2 | Quantec high-output 85dB addressable sounder (with optional programmable HTM08-03 tones - requires a QT423 configurator) |

QT602 ADDRESSABLE CALL POINTS (with remote sockets)

| | |
|----------|---|
| QT602 | Quantec call point, button reset |
| QT602S | Quantec call point with sounder, button reset |
| QT602R | Quantec call point with IR receiver, button reset |
| QT602RS | Quantec call point with sounder & IR receiver, button reset |
| QT602M | Quantec call point, magnetic reset |
| QT602SM | Quantec call point with sounder, magnetic reset |
| QT602RM | Quantec call point with IR receiver, magnetic reset |
| QT602RSM | Quantec call point with sounder & IR receiver, magnetic reset |

The special programming functions on the above require a QT423 configurator

QT602E ADDRESSABLE CALL POINTS (with remote sockets)

| | |
|-----------|---|
| QT602E | Quantec Euro call point, button reset (iconised label) |
| QT602ES | Quantec Euro call point with sounder, button reset (iconised label) |
| QT602ER | Quantec Euro call point with IR receiver, button reset (iconised label) |
| QT602ERS | Quantec Euro call point with sounder & IR receiver, button reset (iconised label) |
| QT602EM | Quantec Euro call point, magnetic reset (iconised label) |
| QT602ESM | Quantec Euro call point with sounder, magnetic reset (iconised label) |
| QT602ERM | Quantec Euro call point with IR receiver, magnetic reset (iconised label) |
| QT602ERSM | Quantec Euro call point with sounder & IR receiver, magnetic reset (iconised label) |

The special programming functions on the above require a QT423 configurator

QT609 ADDRESSABLE CALL POINTS (no remote sockets)

| | |
|----------|--|
| QT609 | Quantec call point, button reset |
| QT609S | Quantec call point, button reset with sounder |
| QT609R | Quantec call point with IR receiver, button reset |
| QT609RS | Quantec call point with sounder & IR receiver button reset |
| QT609M | Quantec call point, magnetic reset |
| QT609SM | Quantec call point with sounder, magnetic reset |
| QT609RM | Quantec call point with IR receiver magnetic reset |
| QT609RSM | Quantec call point with sounder & IR receiver magnetic reset |

The special programming functions on the above require a QT423 configurator

QUANTEC STAINLESS STEEL CALL POINTS

| | |
|------------|---|
| SPE0616000 | Quantec stainless steel call point, button reset, no remote socket, double gang |
| SPE0634000 | Quantec stainless steel call point, key reset, c/w remote socket, double gang |
| SPE0613000 | Quantec stainless steel isolatable call point, key reset, no remote socket, double gang |

Coming soon: a comprehensive range of new Quantec stainless steel call points and ancillaries - contact our Sales Desk for details

QUANTEC SLAVE CEILING PULLS & SLAVE CALL POINTS

| | |
|--------|--|
| QT607 | Quantec slave ceiling pull unit |
| NCP-12 | Nylon ceiling pull cord accessory pack (3m nylon cord, 2 x triangles, 1 x bullet) |
| NCP-13 | Anti-bacterial ceiling pull cord accessory pack (3m vinyl cord, 2 x triangles, 1 x bullet) |
| QT602D | Quantec slave call point |

QUANTEC MONITORING POINTS

| | |
|--------|--|
| QT604 | Quantec monitoring point, button reset, keyswitch isolatable |
| QT604M | Quantec monitoring point, magnetic reset, keyswitch isolatable |

QUANTEC UNIVERSAL PROGRAMMING DEVICES

| | |
|-------|---|
| QT611 | Quantec multi-purpose programmable device (Allows 3rd-party switch assemblies & indicators to be interfaced to Quantec) |
| QT612 | Quantec relay output device (A zone-specific relay output (30V 1A) to trigger third-party strobes, auto-diallers, etc.) |
| QT613 | Quantec zonal indicator driver device (Can drive 3rd-party LED indicating devices) |
| QT614 | Quantec bedhead light dimmer interface |

Programming of the above requires a QT423 configurator

QUANTEC INFRARED CEILING RECEIVERS

| | |
|-----------|--|
| QT302RX | Quantec master infrared ceiling receiver |
| QT302RXS | Quantec slave infrared ceiling receiver |
| QT302RRR | Quantec round master infrared ceiling receiver |
| QT302RRRS | Quantec round slave infrared ceiling receiver |
| QT848/10 | 10 x Anti-tamper grub screws for QT302RRR/QT302RRRS, incl. allen key |
| QT302RT | Quantec test infrared ceiling receiver |

The special programming functions on the QT302RX and QT302RRR require a QT423 configurator

QUANTEC Mk2 (868MHz) RADIO RECEIVERS

| | |
|-----------|---|
| QT422RX | Quantec Mk2 radio receiver |
| QT422RXEX | External extension aerial for QT422RX |
| QT421 | RF integrity 'monitored heartbeat' transmitter (use at least 1 per QT422RX) |

QUANTEC STAFF ATTACK TRANSMITTERS, IR/RADIO (868MHz)

Rechargeable. For use with Quantec infrared call points, infrared ceiling receivers & Mk2 radio receivers. Optional 'User ID' / special programming functionality requires a QT423 configurator

| | |
|-----------|--|
| QT412RXA | Quantec Infrared/radio transmitter (push for attack/pull for attack) |
| QT412RXCA | Quantec Infrared/radio transmitter (push for call/pull for attack) |
| QT424/1 | Single-way charging unit for QT412 transmitters |
| QT424/10 | Ten-way charging unit for QT412 transmitters |

QUANTEC NECK & WRIST PENDANTS, IR/RADIO (868MHz)

Battery operated using a replaceable 12V A23/23A (8LR23) alkaline battery (supplied). For use with Quantec infrared call points, infrared ceiling receivers & Mk2 radio receivers. Optional 'User ID' / special programming functionality requires a QT423 configurator

| | |
|--------|--|
| QT432 | Quantec infrared/radio patient neck pendant c/w lanyard (push for call) |
| QT432W | Quantec infrared/radio patient wrist pendant c/w wrist strap (push for call) |
| QT432S | 10 x Spare wrist straps for QT432W pendant |
| QT432A | Quantec infrared/radio attendance pendant c/w lanyard (push for attendance) |

QUANTEC DEMENTIA CARE CONTROLLER & ANCILLARIES

| | |
|--------|--|
| QT630 | Quantec Dementia care controller c/w PSU (space for 1 x 7Ah batteries) |
| QT631K | Quantec Dementia care room status controller, keyswitch reset/isolate |
| QT631M | Quantec Dementia care room status controller, magnetic reset/isolate |
| QT632 | Quantec doorbell push (for use with QT631K/QT631M) |
| QT639 | Super-bright 3W LED lamp MR16 |

QUANTEC INTERFACE UNITS

Allow external devices such as enuresis sensors, bed exit sensors and PIRs etc, to be connected to Quantec. Must be used in conjunction with a QT602/602E/609 range call point or a QT630 dementia controller.

| | |
|-------|--|
| QT636 | Quantec interface unit c/w remote socket (can be setup to accept n/o or n/c ancillary devices) |
| QT637 | Quantec Enuresis/bed exit socket (includes two remote sockets, one for a QT635 enuresis sensor & one that can accept a n/o or n/c ancillary devices) |
| QT645 | Quantec PIR power interface c/w isolation keyswitch (for use with QT638 PIR movement sensor) |
| QT638 | Quantec PIR movement sensor (requires a QT645 PIR power interface) |

QUANTEC ANCILLARY CALLING DEVICES

Generate calls via the remote socket on a QT602 call point or a QT636 / QT637 interface unit (as indicated).

| | |
|-----------|---|
| NC805C/6 | 1.8m/6ft tail call (connects to a QT602 call point or a QT636/QT637 interface unit) |
| NC805C/14 | 4.2m/14ft tail call (connects to a QT602 call point or a QT636/QT637 interface unit) |
| NC805D | 1.2-3.6m/4-12ft tail call (connects to a QT602 call point or a QT636/QT637 interface unit) |
| NC805P | Hand/foot pneumatic pad, requires 1 x NC805AS |
| NC805AS | Remote air switch for NC805P (connects to a QT602 call point or a QT636/QT637 interface unit) |
| NC805MD | Portable movement detector (connects to a QT602 call point or a QT636/QT637 interface unit) |
| NC805DSP | Double remote jack socket, allows two ancillary calling devices to be connected |
| QT644 | Floor pressure mat (connects to a QT602 call point or a QT636/QT637 interface unit) |
| QT633 | Bed exit mat (connects to a QT636 or QT637 interface unit) |
| QT634 | Chair exit mat (connects to a QT636 or QT637 interface unit) |
| QT635 | Enuresis (bed wet) sensor (connects to a QT637 interface unit) |

QUANTEC PRINTERS & PAGING EQUIPMENT

| | |
|----------|---|
| QT600P | Quantec printer kit incl. printer, lead & wall socket |
| QT600S | Quantec printer/paging wall socket |
| BF874QAQ | Serial display paging transmitter |
| BF876DQ | Dipole 400mHz aerial c/w BNC & 10m connection lead, Extends coverage of DP874QAQ to 1500m |
| BF877QAQ | 40 character alphanumeric pocket pager |

MISCELLANEOUS

| | |
|-----------|--|
| NC803M/10 | Pack of 10 magnetic reset keys |
| NC803M/50 | Pack of 50 magnetic reset keys |
| NC848/10 | 10 x anti-tamper screws |
| NC848/50 | 50 x anti-tamper screws |
| NC947 | Allen key for anti-tamper screws |
| NCP-8 | White 35mm flush UK single gang back box |
| NCP-9 | White 25mm surface UK single gang back box |
| NCP-10 | White 35mm flush UK double gang back box |
| NCP-11 | White 25mm surface UK double gang back box |

Distributed by



You're safe with C-TEC

C-TEC, CHALLENGE WAY, MARTLAND PARK, WIGAN WN5 0LD. UNITED KINGDOM.

UK SALES DESK: Tel: 01942 322744 • Fax: 01942 829867 • Email: sales@c-tec.co.uk

EUROPEAN SALES DESK: Tel: +44 1942 322744 • Fax: +44 1942 829867 • Email: eu.exports@c-tec.co.uk

EXPORT SALES DESK: Tel: +44 161 257 2541 • Fax: +44 161 255 8817 • Email: xportsales@xportsales.co.uk

Visit our website at www.c-tec.co.uk

