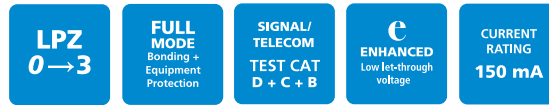
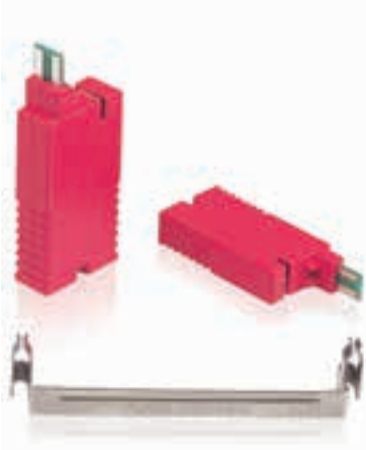


# Data & signal protection

## ESP KS & KE Series



Combined Category D, C, B tested protector (to BS EN 61643) suitable for use on ten line LSA-PLUS disconnection modules to protect individual twisted pair data or signal lines. For use at boundaries up to LPZ 0 to protect against flashover (typically the service entrance location) through to LPZ 3 to protect sensitive electronic equipment.

### Features & benefits

- Low cost protection for large numbers of data and signal lines
- Very low let-through voltage (enhanced protection to IEC/BS EN 62305) between all lines - Full Mode protection
- Full Mode design capable of handling partial lightning currents as well as allowing continual operation of protected equipment
- Repeated protection in lightning intense environments
- Quick and easy plug-in installation
- Colour of housing distinguishes electrically different protectors to help avoid confusion when installed with other protectors (e.g. the ESP KT1/2) on the same distribution frame
- Protect only the lines you need
- Ridged finger holds make it easy to obtain a firm grip for installation or removal
- Use the ESP KE10 to provide trouble free earthing for up to ten protectors (per disconnection module)

### Application

Use these units to protect signal, data, control and instrumentation systems with LSA-PLUS disconnection modules.

Full product range order codes can be found on pages 17/8-17/9

### Installation

Install protectors on all data communication and signal lines that enter or leave each building. All protectors must be installed via the ESP KE10 earth bar. Identify the lines requiring protection and clip the ESP KE10 on to the disconnection modules' earth points. Plug the protector directly into each disconnection module requiring protection (ensuring the correct orientation) for a series connection.

In the unlikely situation that the protector is damaged, it will sacrifice itself and fail short circuit, taking the line out of commission. In addition to indicating that the protector needs replacing, this will also prevent subsequent transients from damaging the equipment.

**NOTE:** For PSTN and U interface ISDN lines on LSA-PLUS modules, use the ESP KT1 or ESP K10T1. For S/T interface ISDN lines on LSA-PLUS modules, use the ESP KT2 or ESP K10T2. For individual twisted pair data or signal lines, use the ESP D, E or H Series Lightning Barriers. The ESP SL and ESP Q Series Lightning Barriers are suitable for high density data and signal lines.