

Meter Management Units (MMU)



Features

- **Pre Wired** - MMU's are supplied with meter fitted to terminals for ease of installation
- **Pre-programmed** - CT ratios have been pre set saving time and reducing risk of errors that could lead to incorrect readings
- **IP65 Rated** - Enclosure suitable for weatherproof conditions and includes glandless cable access with transparent cover for easy viewing
- **MID Approved** - Options for approved tenant billing
- **Safety First** - Compact Mini Clip CT's feature a safe disconnect feature allowing safe maintenance of the meter



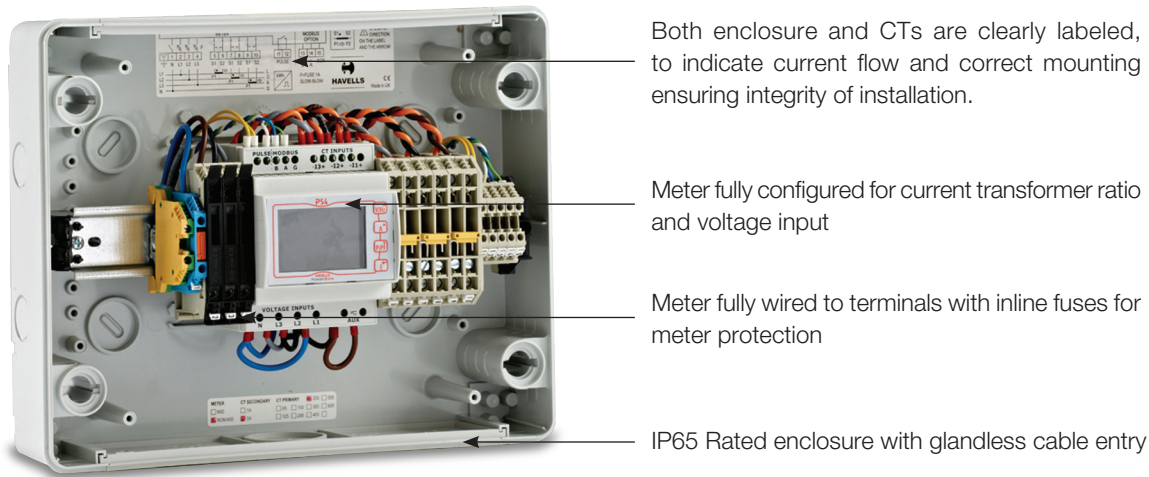
HAVELLS

Meter Management Units

Providing optimised solutions addressing current UK regulatory and local standards is at the heart of Havells switchgear. The launch of a new range of meter management units specifically designed for easy installation on existing supplies or upgrades, helps to provide energy metering to Part L2 of the UK Building Regulations.

Meter Management Units are IP65 metering enclosures fitted with pre-configured multi-function meters and pre-wired split-core current transformers. The range comprises of five configurations up to 250A with MID approved metering available for reliable landlord billing applications. Optional voltage reference connections use insulation-piercing connectors for simplicity and safety.

To save installation time and risk of errors, meters are fully pre-configured for current transformer ratio and voltage and are wired to terminals with in-line fuses for meter protection. Split core current transformers enable easy connection to existing supplies and benefit from a compact case footprint enabling easy mounting especially where space is limited. Current transformers are pre-wired to flying leads easily connected to the meter terminals and include a disconnect feature for safe maintenance.



Pre-wired and pre-programmed enclosed meter, complete with split core CTs

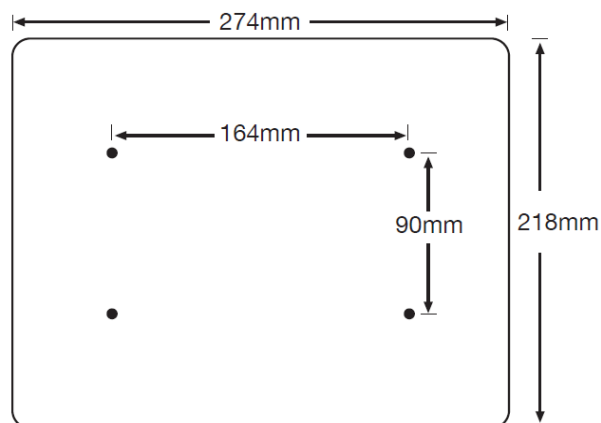
Description	Part No.
125 multifunction meter enclosure with CTs (Three Phase)	PSMMU125
MID 125A multifunction meter enclosure with CTs (Three Phase)	PSMMU125MID
250A multifunction meter enclosure with CTs (Three Phase)	PSMMU250
MID 250A multifunction meter enclosure with CTs (Three Phase)	PSMMU250MID
MID 125A multifunction meter enclosure with CTs (Single Phase)	PSMMU1P125MID
Voltage reference tap off (Set of 4 vampire type for 2.5-6mm ² cable)	PSMMUV4

Optional voltage reference tap off which includes insulating piercing connectors for simplicity and safety



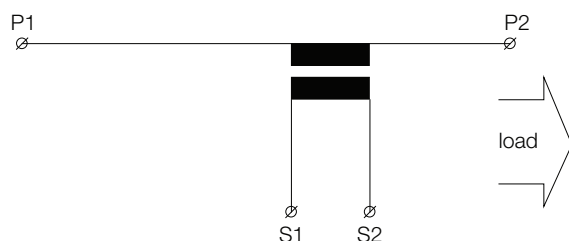
PSMMUV4

Enclosure Dimensions



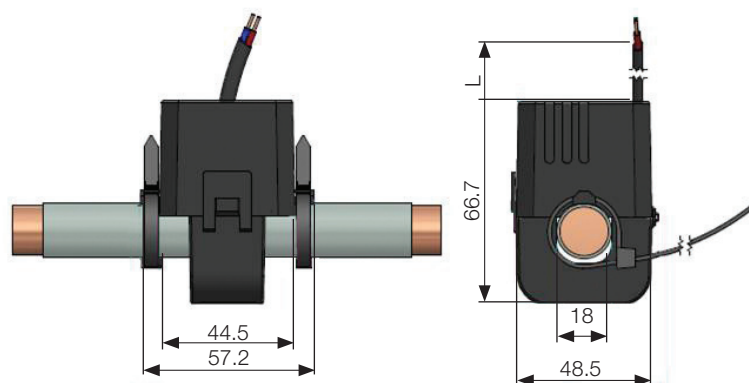
Ratio	Calss	Burden	Aperture	Secondary flying leads
125/1A	1	0.2VA	18mm	S1Brown, S2 Blue 5m
250/5A	1	1VA	28mm	S1Black S2Red 0.6m

Wiring diagram



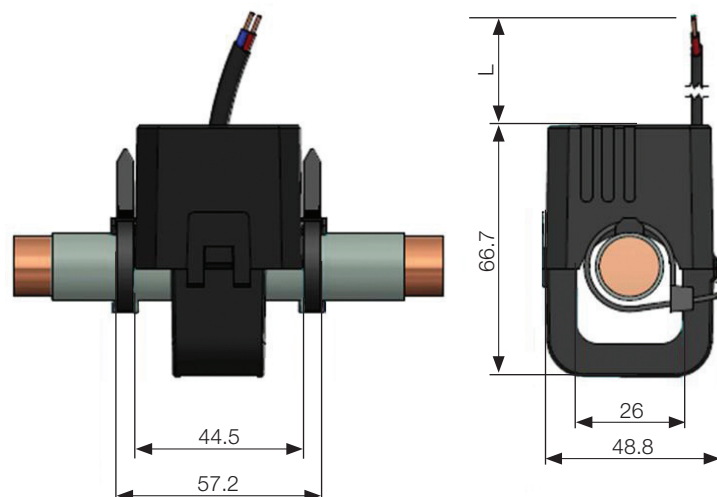
CT Installation

Dimensions for 125A



Cable Length = 5m

Dimensions for 250A



Cable Length = 0.6m

Meter Specifications – NON MID

Parameters displayed

kW, kvar, kVA, Max Demand since last Demand reset, kWh (Import & Export), kvarh (Import & Export), V (U1 U2 U3) Phase to neutral, between phase, Hz, Voltage THD% per phase to neutral, between phase, Current A1, A2, A3, An, Max demand per current, Current THD% each phase, Pf total, current %THD (Total Harmonic Distortion).

Rated Inputs

Voltage (V) 5% to 120% of range maximum
Current (A) 51% to 120% of nominal

Accuracy

Wh Class 1 IEC 62053-21
Pulse output (kWh)
240V AC, 50mA max, 100ms pulse length, 1 pulse = 0.1kWh

Serial communications – Modbus

Baud rate: 2400, 4800, 9600, 19200, 34800
Parity: none / odd / even
Stop bits: 1 or 2

Meter Specifications – MID

Parameters displayed

kWh, kvarh, CT ratio, LED blink rate, kW (P1 P2 P3), kvar (P1 P2 P3), V (U1 U2 U3), A (A1 A2 A3), Pf total, Hz, % Current distortion (d1 d2 d3),

Rated Inputs

Voltage (V) -20% to +15% of nominal 230VAC
Current (A) Ref 1, max 6, min 0.02

Accuracy (According to MID)

Class B according to EN 50470-1, -3,
Class 1 and 2 according to 62052-11, 62053-21, -23

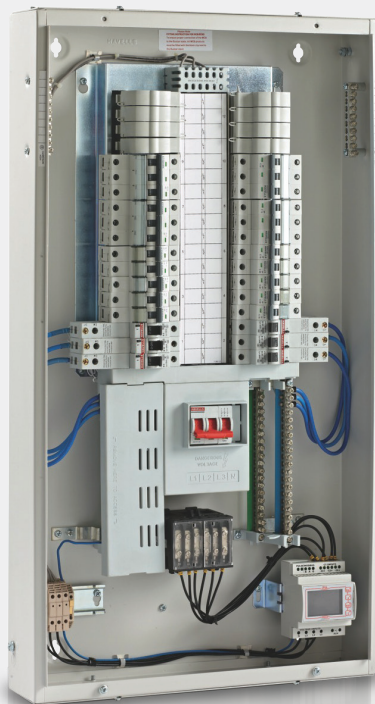
Pulse output (kWh)

0-247V AC/DC, 100mA max, 100ms pulse length,
1 pulse = 0.1kWh

MID approval

MID class A and B, class E2 and M2

Integrated Meter Solutions



- ✓ 25kA conditional short circuit rating to BS EN 60439-3
- ✓ Fully wired 'ready to go' metered 'B' type distribution board
- ✓ Pulse and modbus RS485 communications as standard
- ✓ Multiple incoming options

For more information contact:

Tel: 0843 22 753 88

Email: customerservice.uk@havells.com

CAT6040

SYLVANIA **Lumiance** **Concord**

Havells Sylvania UK Ltd
Avis Way, Newhaven, East Sussex, BN9 0ED
Customer Service: 0843 22 753 88
www.havells.co.uk

