

Installation Materials

Buyers Guide



Make the most of your energySM

Schneider
ElectricTM

Contents

■ Page 1/4**Cable Clips & Electrical fixings**

Cable clips, Wall plugs, Trade tubs, Tapes, PVC sleeving, Connector strips, Chocbox, Grommets, Cable ties, Fixing bands, Cable gland kits, Enclosures, Glands, Cleats, Earth clamps and Pipe accessories

■ Page 2/19**Foam, adhesives, sealants and fillers**

Expanding foam, Gap filling adhesive, Sealants and fillers

■ Page 3/20**Site power**

Cable reels, Extension leads, RCDs and Timers

■ Page 4/22**Power tool accessories**

Drill bits, Holesaws and Arbors

■ Page 5/26**Hand tools**

Electrical hand tools, Tool sets, Crimping kit and General electricians tools

■ Page 6/28**Fixings**

Screws, Cavity fixings, Roofing nuts and bolts, Penny washers, Anchors, Masonry nails, Drywall screws and other fixings.

Cable clips



Wall plugs



Trade tubs



Tapes



PVC sleeving



Connector strips



Chocbox



Grommets



Cable ties



Fixing bands



Cable gland kits



Enclosures



Glands



Cleats



Earth clamps



Pipe accessories



Expanding foam



Gap filling adhesive



Sealants



Fillers



Cable reels



Extension leads



RCDs



Timers



Drill bits



Holesaws



Arbors



Electrical hand tools



Tool sets



Crimping kit



General electricians tools



Screws



Cavity fixings



Roofing nuts and bolts



Penny washers



Anchors



Masonry nails



Drywall screws



Fixings



Schneider Electric point of sale stands



We are dedicated to helping you sell more!

- Schneider Electric branded stands are available on free loan with a minimum £1,500 stock order per stand.
- Stands should only be used for the display of Schneider Electric branded products and remain the property of Schneider Electric.
- Single sided 1.6m stand dimensions: 1,030mm wide, by 550mm deep, by 1,650mm high.
- Double sided 1.6m gondola stand dimensions: 1,030mm wide, by 1,040mm deep, by 1,650mm high.
- Single sided 2m stand dimensions: 1,030mm wide, by 550mm deep, by 2,000mm high.

For more information, please ask your local Installation Materials sales representative.

Cable clips

Thorsman clips premium - TC



Product code	Description	Pack quantity
Round clips		
2001008	TC 2 - 3 clear, telephone - 2 pair	100 x 10
2011005	TC 3 - 5 clear, telephone - 4 pair	100 x 10
2011017	TC 3 - 5 white, telephone - 4 pair	100 x 10
2011021	TC 3 - 5 grey, telephone - 4 pair	100 x 10
2022009	TC 5 - 7 clear, 2 core flexible	100 x 10
2022010	TC 5 - 7 white, 2 core flexible	100 x 10
2022029	TC 5 - 7 black, 2 core flexible	100 x 10
2032011	TC 7 - 10 white, 3 core flexible	100 x 10
2032041	TC 7 - 10 black, co-axial	100 x 10
2032091	TC 7 - 10 brown, co-axial	100 x 10
2032061	TC 7 - 10 red, co-axial	100 x 10
2041200	TC 8 - 12 white, co-axial	100 x 10
2041259	TC 8 - 12 grey	100 x 10
2042011	TC 10 - 14 white	100 x 10
2042021	TC 10 - 14 grey	100 x 10
2042041	TC 10 - 14 black	100 x 10
2052011	TC 14 - 20 white	100 x 10
2052051	TC 14 - 20 black	100 x 10
2060002	TC 18 - 22 white	50 x 10
2060135	TC 18 - 22 black	50 x 10
2070209	TC 22 - 26 white	50 x 10
2070134	TC 22 - 26 black	50 x 10
Flat clips		
2101004	TC 2 x 4 clear, bell wire	100 x 10
2106003	TC 3 x 5 clear, 2812X	100 x 10
2111003	TC 4 x 6 clear, 3219Y	100 x 10
2111029	TC 4 x 6 grey, 3192Y	100 x 10
2116010	TC 5 x 8 white, 1 and 1.5mm ² T&E	100 x 10
2116028	TC 5 x 8 grey, 1 and 1.5mm ² T&E	100 x 10
2126019	TC 6 x 10 white, 2.5mm ² T&E	100 x 10
2126027	TC 6 x 10 grey, 2.5mm ² T&E	100 x 10
2131019	TC 7 x 14 white, 4 and 6mm ² T&E	100 x 10
2131027	TC 7 x 14 grey, 4 and 6mm ² T&E	100 x 10
2136018	TC 9 x 18 white, 10 and 16mm ² T&E	100 x 10
2136026	TC 9 x 18 grey, 10 and 16mm ² T&E	100 x 10
2137014	TC 11 x 22 white	100 x 10
Double flat clips		
2141026	TCD 5 x 8 grey, 2 x 1 and 1.5mm ² T&E	100 x 10
2146025	TCD 6 x 10 grey, 2 x 2.5mm ² T&E	100 x 10

- For use in wood, compressed board and mortar.
- Flexible design for use with various cable sizes
- Manufactured from impact resistant polypropylene which combines strength and elasticity
- Supplied with a zinc plated hardened steel nail
- Halogen free
- Packed in full colour printed boxes

Cable clips

Thorsman clips standard - TCA



Product code	Description	Pack quantity
Round clips		
2201000A	TCA 3 - 5 clear, telephone - 4 pair	100 x 10
2201001A	TCA 3 - 5 white, telephone - 4 pair	100 x 10
2202011A	TCA 5 - 7 clear, 2 core flexible	100 x 10
2202000A	TCA 5 - 7 white, 2 core flexible	100 x 10
2202005A	TCA 5 - 7 black, 2 core flexible	100 x 10
2203000A	TCA 7 - 9 white, 3 core flexible	100 x 10
2203002A	TCA 7 - 9 black, co-axial	100 x 10
2203004A	TCA 7 - 9 brown, co-axial	100 x 10
2203005A	TCA 7 - 9 red, co-axial	100 x 10
2205000A	TCA 10 - 13 white	100 x 10
2205002A	TCA 10 - 13 black	100 x 10
2206000A	TCA 14 - 20 white	100 x 10
2206002A	TCA 14 - 20 black	100 x 10
Flat clips		
2210000A	TCA 2 x 4 clear, bell wire	100 x 10
2211000A	TCA 3 x 5 clear, 2812Y	100 x 10
2212000A	TCA 4 x 6 clear, 3192Y	100 x 10
2213000A	TCA 5 x 8 white, 1 and 1.5mm ² T&E	100 x 10
2213001A	TCA 5 x 8 grey, 1 and 1.5mm ² T&E	100 x 10
2214000A	TCA 6 x 10 white, 2.5mm ² T&E	100 x 10
2214001A	TCA 6 x 10 grey, 2.5mm ² T&E	100 x 10
2215000A	TCA 7 x 14 white, 4 and 6mm ² T&E	100 x 10
2215001A	TCA 7 x 14 grey, 4 and 6mm ² T&E	100 x 10

- For use in wood, compressed board and mortar.
- Flexible design for use with various cable sizes
- Manufactured from impact resistant polypropylene which combines strength and elasticity
- Supplied with a zinc plated hardened steel nail
- Packed in plain white boxes

Self adhesive clips



Product code	Description	Pack quantity
Standard clips		
65SA04W	Up to 4mm diameter	25
65SA08W	Up to 8mm diameter	25
65SA12W	Up to 12mm diameter	25
Cable tie carrier		
65CT05B	Maximum width of cable tie 5mm	25
65CT10B	Maximum width of cable tie 10mm	25

- The ideal cable fixing where a nail-in application would be impossible or unacceptable

Cable clips

Tower clips



Product code	Description	Pack quantity
Round clips		
70CWRC275	2.75mm white	100 x 10
70CWRC35	3.5mm white	100 x 10
70CBRC4	4mm black	100 x 10
70CWRC4	4mm white	100 x 10
70CBRC5	5mm black	100 x 10
70CWRC5	5mm white	100 x 10
70CBRC6	6mm black	100 x 10
70CWRC6	6mm white	100 x 10
70CBRC7	7mm black	100 x 10
70CWRC7	7mm white	100 x 10
70CBRC8	8mm black	100 x 10
70CWRC8	8mm white	100 x 10
70CBRC9	9mm black	100 x 10
70CWRC9	9mm white	100 x 10
70CBRC10	10mm black	100 x 10
70CWRC10	10mm white	100 x 10
70CBRC11	11mm black	100 x 10
70CWRC11	11mm white	100 x 10
70CBRC12	12mm black	100 x 10
70CWRC12	12mm white	100 x 10
70CBRC14	14mm black	50 x 10
70CWRC14	14mm white	50 x 10
70CBRC16	16mm black	50 x 10
70CWRC16	16mm white	50 x 10
Flat twin and earth clips		
70CGKF10	1mm ² grey, 6242Y	100 x 100
70CGKF15	1.5mm ² grey, 6242Y	100 x 100
70CGKF25	2.5mm ² grey, 6242Y	100 x 100
70CGKF40	4mm ² grey, 6242Y	100 x 10
70CGKF60	6mm ² grey, 6242Y	100 x 10
70CGKF100	10mm ² grey, 6242Y	100 x 10
70CGKF160	16mm ² grey, 6242Y	100 x 10
Flat three core and earth clips		
70CG3CE	1mm ² and 1.5mm ² grey	100 x 10
Flat double clips		
70CGDKF15	1 / 1.5mm ² grey, 6242Y	100 x 10
70CGDKF25	2.5mm ² grey, 6242Y	100 x 10
Flat parallel twin clips		
70CWPT	Bell wire white	100 x 10
70CWPM	0.50mm ² white, 2812X	100 x 10
70CWSM	0.75mm ² white, 3192Y	100 x 10

- For use in wood, compressed board and mortar.
- Manufactured from polypropylene which combines strength and elasticity
- Supplied with a zinc plated hardened steel nail

Cable clips

Tower clips



Product code	Description	Pack quantity
TV cable and satellite clips		
72CB05P	5 - 6mm black, co-axial cable	100 x 10
72CT05P	5 - 6mm brown, co-axial cable	100 x 10
72CW05P	5 - 6mm white, co-axial cable	100 x 10
72CB06P	6 - 7mm black, co-axial cable	100 x 10
72CT06P	6 - 7mm brown, co-axial cable	100 x 10
72CW06P	6 - 7mm white, co-axial cable	100 x 10
72CB07P	7 - 8mm black, co-axial cable	100 x 10
72CT07P	7 - 8mm brown, co-axial cable	100 x 10
72CW07P	7 - 8mm white, co-axial cable	100 x 10
72CBKF40	4mm T&E black	100 x 10
72CBKF60	6mm T&E black	50 x 10

Tower plus clips



Product code	Description	Pack quantity
Round plus clips		
77CB04P	4 - 5mm black	200 x 10
77CW04P	4 - 5mm white	200 x 10
77CB05P	5 - 6mm black	100 x 10
77CW05P	5 - 6mm white	100 x 10
77CB06P	6 - 7mm black	100 x 10
77CW06P	6 - 7mm white	100 x 10
77CR06P	6 - 7mm red	100 x 10
77CB07P	7 - 8mm black	100 x 10
77CW07P	7 - 8mm white	100 x 10
77CR07P	7 - 8mm red	100 x 10
77CB09P	9 - 11mm black	100 x 10
77CW09P	9 - 11mm white	100 x 10
77CR09P	9 - 11mm red	100 x 10
77CB12PAC	12 - 14mm black	100 x 10
77CW12PAC	12 - 14mm white	100 x 10
77CB15PAC	15 - 18mm black	100 x 10
77CW15P	15 - 18mm white	100 x 10
77CB19P	19 - 24mm black	50 x 10
77CW19P	19 - 24mm white	50 x 10
77CB25P	25 - 28mm black	50 x 10
77CW25P	25 - 28mm white	50 x 10
Flat plus twin and earth clips		
77CGPF1P	1 / 1.5mm ² 6242Y grey	100 x 100
77CGPF25P	2.5mm ² 6242Y grey	100 x 100
77CGPF4P	4 / 6mm ² 6242Y grey	100 x 10
77CGPF10P	10mm ² 6242Y grey	50 x 10

- For use in wood, compressed board and mortar.
- Manufactured from polypropylene which combines strength and elasticity
- Supplied with a zinc plated hardened steel nail
- Plus clip features a return 'hook' that holds cables tightly. Ideal for use in computer and communication installations where cables may vary in size

Pin plug for cable clips

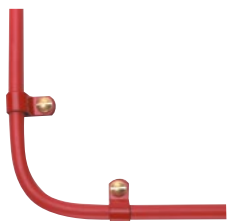


Product code	Description	Pack quantity
55PP1	Grey 20mm (5mm drill)	100

- The pin plug provides the ideal fixing in situations, where the substrate is too hard to take a masonry nail or cable clip
- Drill a 5mm hole and tap in the pin plug

Cable clips

Low smoke and fume clips and saddles



LSF sizing chart

Product code	Description	Pack quantity
Clips		
64LSF26R	6.5 - 6.9mm diameter red	50
64LSF26W	6.5 - 6.9mm diameter white	50
64LSF28R	7 - 7.4mm diameter red	50
64LSF28W	7 - 7.4mm diameter white	50
64LSF30R	7.5 - 7.9mm diameter red	50
64LSF30W	7.5 - 7.9mm diameter white	50
64LSF32R	8 - 8.4mm diameter red	50
64LSF32W	8 - 8.4mm diameter white	50
64LSF34R	8.5 - 9.2mm diameter red	50
64LSF34W	8.5 - 9.2mm diameter white	50
64LSF37R	9.3 - 10mm diameter red	50
64LSF37W	9.3 - 10mm diameter white	50
64LSF40R	10.1 - 10.7mm diameter red	50
64LSF40W	10.1 - 10.7mm diameter white	50
64LSF43R	10.8 - 11.7mm diameter red	50
64LSF43W	10.8 - 11.7mm diameter white	50
Saddles		
64LSF272R	6.3 - 6.9mm diameter red	50
64LSF272W	6.3 - 6.9mm diameter white	50
64LSF302R	7 - 7.7mm diameter red	50
64LSF342R	7.8 - 9mm diameter red	50
64LSF342W	7.8 - 9mm diameter white	50

- Clips for soft skin fire performance cables
- Copper clips with LSF coating - complies to: BS 476. Part 6, BS 476. Part 7, BS 6853, BS EN 60332, UL 94 vertical burn test

Cable size	One hole 'P' clip		Two hole 'Saddle' clip	
	MICC cable	FP200 cable	MICC cable	FP200 cable
2 core 1mm ²	64LSF26R	64LSF32R	64LSF272R	64LSF302R
	64LSF26W	64LSF32W	64LSF272W	
3 core 1mm ²	64LSF28R	64LSF32R	64LSF302R	64LSF302R
	64LSF28W	64LSF32W		
4 core 1mm ²	64LSF30R	64LSF32R	64LSF342R	64LSF342R
	64LSF30W	64LSF32W	64LSF342W	64LSF342W
2 core 1.5mm ²	64LSF28R	64LSF32R	64LSF302R	64LSF302R
	64LSF28W	64LSF32W		
3 core 1.5mm ²	64LSF30R	64LSF32R	64LSF342R	64LSF342R
	64LSF30W	64LSF32W	64LSF342W	64LSF342W
4 core 1.5mm ²	64LSF34R	64LSF37R	64LSF342R	
	64LSF34W	64LSF37W	64LSF342W	
2 core 2.5mm ²	64LSF32R	64LSF37R	64LSF342R	
	64LSF32W	64LSF37W	64LSF342W	
3 core 2.5mm ²	64LSF34R	64LSF40R	64LSF342R	
	64LSF34W	64LSF40W	64LSF342W	
4 core 2.5mm ²	64LSF37R	64LSF43R	64LSF342R	
	64LSF37W	64LSF43W	64LSF342W	
2 core 4.0mm ²	64LSF37R	64LSF43R		
	64LSF37W	64LSF43W		

- This chart is intended as a guide only. Please check the actual cable dimensions against the clip dimensions to ensure the exact selection. Schneider Electric cannot be accept responsibility for an incorrect selection

Wall plugs and trade tubs

Wall plugs - TP



Product code	Description	Pack quantity
1001007	TP 1 yellow	100 x 10
1003003	TP 2 red	100 x 10
1005008	TP 2B brown	100 x 10
IMT48000	TP 3 blue	100 x 10
IMT48001	TP 4 green	50 x 10

- Red, brown and yellow plugs supplied on a sprue of 10
- Green and blue plugs supplied loose
- Dual expansion giving high load values
- Packed in full colour printed boxes

Wall plugs economy - TPA



Product code	Description	Pack quantity
1090600	TPA 1 yellow	100 x 10
1090605	TPA 2 red	100 x 10
1090720	TPA 2 red	100 x 250
1090610	TPA 2B brown	100 x 10
1090725	TPA 2B brown	100 x 200
1090615	TPA 3 blue	100 x 10

- Supplied loose
- Dual expansion giving high load values
- Packed in plain boxes
- Outer quantities available

Nylon wall plugs - TNP



Product code	Description	Pack quantity
1060030	TNP 6 x 30mm	100
1060040	TNP 7 x 35mm	100
1060050	TNP 8 x 40mm	100
1060060	TNP 10 x 50mm	50
1060070	TNP 12 x 60mm	25
1060080	TNP 14 x 70mm	20

- Suitable for concrete, stone, hollow block brick and plasterboard.
- High load values
- Easy to install

Trade tubs



Product code	Description	Pack quantity
Fixings		
1776015	500 red wall plugs and 500 8 x 1½" screws	8
1776020	400 brown wall plugs and 400 10 x 2" screws	8
1776111	200 metal cavity fixings and 200 screws	4
1776200	500 4 x 60mm green decking screws	8
Tower clips		
05TUB04	400 1/1.5mm² and 400 2.5mm² flat grey T&E cable clips	8
05TUB05	400 1/1.5mm² and 400 2.5mm² flat grey plus T&E cable clips	8
Thorsman clips		
1776112	400 1/1.5mm² and 400 2.5mm² flat grey T&E cable clips	4

- An excellent range of fixings and clips in a durable, re-sealable plastic tub with a carry handle
- Quality fixings
- Superb value

Tapes and PVC sleeving

PVC insulation tape



Product code	Description	Pack quantity
2420100	19mm x 20m red	8
2420101	19mm x 20m yellow	8
2420102	19mm x 20m blue	8
2420103	19mm x 20m black	8
2420104	19mm x 20m white	8
2420105	19mm x 20m yellow / green	8
2420106	19mm x 20m green	8
2420107	19mm x 20m brown	8
2420108	19mm x 20m grey	8
2420110	19mm x 33m red	8
2420111	19mm x 33m yellow	8
2420112	19mm x 33m blue	8
2420113	19mm x 33m black	8
2420114	19mm x 33m white	8
2420115	19mm x 33m yellow / green	8
2420116	19mm x 33m brown	8
2420117	19mm x 33m green	8
2420118	19mm x 33m grey	8
2420300	50mm x 33m red	3
2420301	50mm x 33m yellow	3
2420302	50mm x 33m blue	3
2420303	50mm x 33m black	3
2420304	50mm x 33m white	3

- Manufactured from flame retardant self extinguishing PVC to BS EN 60454
- Suitable for electrical insulation, binding, colour coding and general work
- Available in a range of sizes and colours

Specialist tapes



Product code	Description	Pack quantity
Self amalgamating tape		
2423000	19mm x 10m	1
2423100	25mm x 10m	1
Gaffer tape		
2424000	50mm x 50m silver	1
2424004	50mm x 50m black	1
Waterproof ducting tape		
2424005	50mm x 50m black	1
Underground warning tape		
25EC365	150mm x 365m yellow	1

- Specialist electrical tapes for extreme weather conditions
- Ducting tape available for general purpose sealing and binding or heating and ventilation uses
- Self amalgamating for protection against corrosion and providing watertight seals
- Gaffer tape, general purpose cloth tape for sealing and protecting
- Underground warning tape message 'caution electric cable below'

PVC sleeving



Product code	Description	Pack quantity
27GY2	Green/yellow 2mm	100m
27GY3	Green/yellow 3mm	100m
27GY4	Green/yellow 4mm	100m
27GY5	Green/yellow 5mm	100m
27GY6	Green/yellow 6mm	100m
27BN3	Brown 3mm	100m
27BN4	Brown 4mm	100m
27BU3	Blue 3mm	100m
27BU4	Blue 4mm	100m

- Sleeving is supplied in non-shrink PVC and is self extinguishing

Connector strips, chocbox and grommets

Connector Strips



Product code	Description	Pack quantity
Brass insert		
3000254	2.5 amp	10 strips
3000270	5 amp	10 strips
3000288	15 amp	10 strips
3000296	30 amp	10 strips
3000938	60 amp	5 strips
Steel insert		
3000410	2.5 amp	10 strips
3000420	5 amp	10 strips
3000430	15 amp	10 strips
3000440	30 amp	10 strips

- The tough yet flexible polypropylene construction allows you snap off the desired amount of connector strips, removing the need for time consuming cutting
- Connector strips are made from self extinguishing rigid white polypropylene, which eliminates the risk of fire from arcing
- CE approved for use in working temperatures up to 85°C
- Compliant to EN 60998
- Steel insert for general use
- Brass insert for high performance, particularly where corrosion resistance is required

Chocbox



Product code	Description	Pack quantity
CHOCBOXTH	Thorsman chocbox connector box	200
Maximum capacities:		
Connector size	With cordgrip	Without cordgrip
2 amp	8 pole	10 pole
5 amp	6 pole	8 pole
15 amp	4 pole	4 pole
30 amp	3 pole	3 pole

- The revolutionary connector cover that is safe and simple to use
- The solution to protecting and insulating electrical connections
- Chocbox is a connector cover (2 - 30amp), a junction box (fixed wiring) and a conduit box
- Tested to BS EN60598-1 (13.3.2), 850°C glow-wire
- Connector strip not included

PVC cable grommets



Product code	Description	Pack quantity
Standard type		
3280210	20mm open	100
3280215	20mm closed	100
3280220	25mm open	50
3280225	25mm closed	50
Quick fit type		
3280010	20mm open	100
3280015	20mm closed	100
3280020	25mm open	50
3280035	25mm closed	50

- Designed to prevent cable chafing through trunking and electrical boxes
- Available in standard and quick fit designs

Compression grommets - TET



Product code	Description	Pack quantity
IMT36179	3 - 5 EPDM	50
IMT36180	5 - 7 EPDM	50
IMT37303	7 - 10 EPDM	50
IMT37307	10 - 14 EPDM	50
IMT37311	14 - 20 EPDM	50
IMT37314	20 - 26 EPDM	25
IMT37304	7 - 10 chloroprene	50
IMT37308	10 - 14 chloroprene	50

- Designed to completely seal against dust and water to IP67
- Wide sealing range for each size of product
- Available in grey EPDM and black chloroprene materials

Cable ties and fixing bands

Cable ties - TCT



Product code	Description	Pack quantity
Natural		
IMT46026	100 x 2.5mm	100
IMT46064	150 x 3.6mm	100
IMT46149	200 x 3.6mm	100
IMT46101	200 x 4.8mm	100
IMT46918	250 x 4.8mm	100
IMT46919	300 x 4.8mm	100
IMT46248	370 x 4.8mm	100
IMT46286	380 x 7.6mm	100
Black		
IMT46033	100 x 2.5mm	100
IMT46071	150 x 3.6mm	100
IMT46156	200 x 3.6mm	100
IMT46118	200 x 4.8mm	100
IMT46968	250 x 4.8mm	100
IMT46969	300 x 4.8mm	100
IMT46970	370 x 4.8mm	100
IMT46293	380 x 7.6mm	100

- Suitable for a wide range of applications including cable harnessing and cable fastening
- Manufactured from either natural or black 6.6 grade nylon
- UV resistant and complies to EN62275

Cable tie plug



Product code	Description	Pack quantity
55CTP640B100	6 x 40mm (6mm drill)	100

- A quick and easy way of fixing pipes or cables by means of a cable tie
- Drill a 6mm hole, hammer in the fixing and insert the cable tie

Fixing bands



Product code	Description	Pack quantity
Straight edge fixing band - TGB		
2705110	12 x 0.7mm (10m)	1
2705310	20 x 0.7mm (25m)	1
2705320	20 x 1mm (10m)	1
2705420	25 x 2mm (10m)	1
Configuration 8 galvanised fixing band - TAG		
2700610	12 x 0.7mm (10m)	1
2700630	17 x 0.7mm (10m)	1
2700650	26 x 1mm (10m)	1
Straight edge universal fixing band - TUB		
2703015	8 white (10m)	1
2704013	12 white (10m)	1
Configuration 8 plastic coated fixing band - TAP		
2700510	12 x 0.7mm black (10m)	1
2700511	12 x 0.7mm white (10m)	1
2700513	12 x 0.7mm red (10m)	1
2700530	17 x 0.7mm black (10m)	1
2700531	17 x 0.7mm white (10m)	1
2700533	17 x 0.7mm red (10m)	1
Configuration 8 copper fixing band - TAC		
2700710	12 x 0.9mm (10m)	1

- All banding is suitable for suspended installations and anchoring in electrical, building, heating and ventilation installations
- Easy to cut and shape

Cable gland kits

LSF cable gland kits - 2 part



Product code	Description	Pack quantity
LBW20SK	20mm small	1
LBW20K	20mm	1
LBW25K	25mm	1
LBW32K	32mm	1
LBW40K	40mm	1
LBW50K	50mm	1
LBW63K	63mm	1

- Armoured cable gland kit contains clamping collar, gland, mounting nut, earth tag and shroud
- Sizes 20mm S to 32mm contain two of each component
- Sizes 40mm to 63mm contain one of each component
- Low smoke and fume coating complies to BS6121 part 1

LSF cable gland kits IP rated - 2 part



Product code	Description	Pack quantity
LCW20SK	20mm small	1
LCW20K	20mm	1
LCW25K	25mm	1
LCW32K	32mm	1
LCW40K	40mm	1
LCW50K	50mm	1
LCW63K	63mm	1

- Armoured cable gland kit contains clamping collar, gland, mounting nut, earth tag and shroud
- Sizes 20mm S to 32mm contain two of each component
- Sizes 40mm to 63mm contain one of each component
- Low smoke and fume coating complies to BS6121 part 1
- Rated to IP66

Brass BW cable gland kits - 2 part



Product code	Description	Pack quantity
MBW20SK	20mm small	1
MBW20K	20mm	1
MBW25K	25mm	1
MBW32K	32mm	1
MBW40K	40mm	1
MBW50K	50mm	1
MBW63K	63mm	1

- Armoured 2 part cable gland kit contains clamping collar, gland, mounting nut, earth tag and shroud
- Sizes 20mm S to 32mm contain two of each component
- Sizes 40mm to 63mm contain one of each component
- For indoor use

Brass BW cable gland kits - 3 part



Product code	Description	Pack quantity
3BW20SK	20mm small	1
3BW20K	20mm	1
3BW25K	25mm	1
3BW32K	32mm	1
3BW40K	40mm	1
3BW50K	50mm	1
3BW63K	63mm	1

- Armoured 3 part cable gland kit contains clamping collar, clamping ring, gland, indentation issues throughout
- Sizes 20mm S to 32mm contain two of each component
- Sizes 40mm to 63mm contain one of each component
- For indoor use

Cable gland kits, brass bushes & enclosures

Brass CW cable gland kits - 4 part



Product code	Description	Pack quantity
MCW20SK	20mm small	1
MCW20K	20mm	1
MCW25K	25mm	1
MCW32K	32mm	1
MCW40K	40mm	1
MCW50K	50mm	1
MCW63K	63mm	1

- Armoured 4 part cable gland kit contains sealing collar, clamping ring, gland, mounting nut, earth tag and shroud
- Sizes 20mm S to 32mm contain two of each
- Sizes 40mm to 63mm contain one of each component
- For outdoor use rated to IP66

Shrouds



Product code	Description	Pack quantity
SH20S	20mm small	1
SH20	20mm	1
SH25	25mm	1
SH32	32mm	1

Brass bushes



Product code	Description	Pack quantity
MBM20S	20mm short male	10
MBM25S	25mm short male	10
MBM15S	1.5" short male	10
MBM20L	20mm long male	10
MBM32L	32mm long male	10

Wall mounted industrial enclosures



Product code	Description	Pack quantity
M101005	100 x 100 x 50mm	1
M130806	130 x 80 x 55mm	1
M151107	150 x 110 x 70mm	1
M181407	180 x 140 x 70mm	1
M241808	240 x 180 x 85mm	1

- Adaptable box for a multitude of uses
- Manufactured from thermoplastic and rated to IP56
- Available in grey

Glands

Dome top glands



Product code	Description	Cable diameter	Pack quantity
MP16DW	16mm white	5 - 10mm	50
MP16DB	16mm black	5 - 10mm	50
MP20DW	20mm small white	6 - 12mm	50
MP20DB	20mm small black	6 - 12mm	50
MP20DR	20mm small red	6 - 12mm	50
MP202DW	20mm white	10 - 14mm	50
MP202DB	20mm black	10 - 14mm	50
MP202DR	20mm red	10 - 14mm	50
MP25DW	25mm white	13 - 18mm	25
MP25DB	25mm black	13 - 18mm	25
MP32DW	32mm white	18 - 25mm	20
MP32DB	32mm black	18 - 25mm	20

- For securing and terminating cable into a source
- Supplied complete with locknut
- IP68 rated submersible zero halogen
- CE marked
- Available in white, black or red

Nylon glands



Product code	Description	Cable diameter	Pack quantity
Gland kits			
MPL20W	20mm small white	7 - 10.5mm	10
MPL20B	20mm small black	7 - 10.5mm	10
MPL202B	20mm large black	8 - 13mm	10
Glands only			
MP10B	10mm black	5 - 7mm	100
MP16W	16mm white	7 - 10.5mm	100
MP16B	16mm black	7 - 10.5mm	100
MP20W	20mm small white	7 - 10.5mm	100
MP20B	20mm small black	7 - 10.5mm	100
MP20R	20mm small red	7 - 10.5mm	100
MP202B	20mm large black	8 - 13mm	100
MP202R	20mm large red	8 - 13mm	100
MP25W	25mm small white	8 - 13mm	100
MP25B	25mm small black	8 - 13mm	100
MP25R	25mm small red	8 - 13mm	100
MP252W	25mm large white	12 - 18mm	100
Lock nuts only			
ML10B	10mm black	5 - 7mm	100
ML16W	16mm white	7 - 10.5mm	100
ML16B	16mm black	7 - 10.5mm	100
ML20W	20mm small white	7 - 10.5mm	100
ML20B	20mm small black	7 - 10.5mm	100
ML20R	20mm small red	7 - 10.5mm	100
ML25W	25mm small white	8 - 13mm	100
ML25B	25mm small black	8 - 13mm	100
ML25R	25mm small red	8 - 13mm	100

- For securing and terminating cable into a source
- Zero halogen nylon for use on unarmoured cables type A
- Available in kit form, individual glands or locknuts
- Available in white, black or red

Cleats

Heavy duty cable cleats



Product code	Description	Pack quantity
LDPP - single hole		
MS3	7.6mm	50
MS4	10.2mm	50
MS5	12.7mm	50
MS6	15.2mm	50
MS7	17.0mm	50
MS8	20.3mm	50
MS9	22.8mm	50
MS10	25.4mm	50
MS11	27.7mm	20
MS12	30.4mm	20
MS14	35.6mm	20
MS16	40.6mm	20
MS18	45.7mm	20
MS20	50.8mm	20
MS13 also available to special order		
LDPP - two hole		
MT9	57.1mm	5
MT10	63.5mm	5
MT11	69.8mm	5
MT12	76.2mm	5
MT14	82.5mm	5
MT15	105mm	5

- For clamping and tying armoured and unarmoured cables
- Constructed from low density polyolefin (LDPP) and available in black
- High strength and impact resistance
- Corrosion and UV light resistant
- Stable at temperature ranging from -35°C to +85°C

LSF polypropylene JEM 2 part clamps



Product code	Description	Pack quantity
MJ2	Cable diameter 50 – 75mm	5

- Rapid flame extinction
- Low smoke emission, halogen and heavy metal free

Cable cleat sizing chart

PVC	1 Core	2 Core	3 Core	4 Core	7 Core	12 Core	19 Core	27 Core
Cable Type Conductor mm²								
1.5		MS5	MS5	MS6	MS6	MS8	MS9	MS10
2.5		MS6	MS6	MS6	MS7	MS9	MS10	MS12
4		MS6	MS7	MS7	MS7	MS8	MS11	
6		MS7	MS8	MS8				
10		MS8	MS9	MS9				
16		MS9	MS10	MS11				
XLPE								
25		MS10	MS11	MS12				
35		MS12	MS11	MS12				
50	MS7	MS11	MS12	MS14				
70	MS8	MS12	MS14	MS16				
95	MS9	MS14	MS16	MS18				
95	MS9	MS14	MS16	MS18				
120	MS10	MS16	MS16	MS20				
150	MS11	MS16	MS18	MT9				
185	MS12	MS18	MS20	MT9				
240	MS14	MS20	MT9	MT10				
300	MS16	MT9	MT10	MT11				
400	MS16							
500	MS18							
630	MS20							
800	MT9							
1000	MT10							

- This chart is intended as a guide only.
- Please check actual cable dimensions against clear dimensions to ensure exact selection. Schneider Electric. cannot accept responsibility for an incorrect selection.
- The most commonly used copper conductor types are shown

Earth clamps and pipe accessories

Earth clamps



Product code	Description	Pipe diameter	Pack quantity
3000952	ECL15 150mm strap length wet or dry use	12-32mm	20
3000956	ECL14 150mm strap length wet use	12-32mm	20
3000959	EC16 150mm strap length wet use	12-32mm	20
3000965	EC14/2 200mm strap length dry use	32-50mm	20
3000969	EC15/2 200mm strap length wet or dry use	32-50mm	20
3000971	EC15/3 300mm strap length wet or dry use	50-75mm	20
21RCK10	Ezerth standard clamp kit (for radiators)	n/a	10

- Available to suit wet or dry conditions and a range of pipe diameters
- Designed to comply with BS951
- Manufactured with a brass or phosphor bronze body with phosphor bronze strap

Pipe clips and spacers



Product code	Description	Pack quantity
4304018	15mm single open	100
4304025	22mm single open	100
4304032	28mm single open	100
4304019	15mm double open	100
4304026	22mm double open	100
4301010	15mm single hinged	100
4301015	22mm single hinged	100
4301020	28mm single hinged	50
4301040	15mm double hinged	50
4301045	22mm double hinged	50
2053015	15mm nail - in clips	100
78PCW10AC	White 10mm - 29mm nail	100 x 10

- Snap on type
- Screw fixed
- Interlocking facility enables joining of hinged clips
- Manufactured from polypropylene
- Can withstand temperatures of 80oC
- Spacers provide additional stand off distance from the wall for insulation materials
- Available for a wide range of heating pipe diameters

Pipe trunking - type TRL



Product code	Description	Pack quantity
5320100	56 x 30mm pipe cover	25m (10 lengths)
5320210	76 x 40mm pipe cover	25m (10 lengths)
5322010	56mm clamps and ties	50
5322160	56mm joint junction	100
5322110	56mm stop end	100
5322020	76mm clamps and ties	50
5322180	76mm joint junction	100
5322130	76mm stop end	100
5106010	8 - 10mm clip and cover clamp	50
5322465	15mm clip and cover clamp	50
5322470	22mm clip and cover clamp	50

- Cover designed to suit both plumbing and electrical installations
- Base clamps with ties, fixes the pipe or cable
- Cover snaps into place reducing risk of damage

Foams, adhesives sealants and fillers

Expanding foam



Product code	Description	Pack quantity
1520002	Multi purpose hand held 500ml	12
1520005	Multi purpose hand held 750ml	12
1520030	Multi purpose hand held 750ml	12

- Ideal for filling large or irregular gaps
- Suitable for gun or handheld application
- Expands to at least 30 times its original volume
- Fire rated product approved to BS 476 (part 20) up to 2 hour protection

Gap filling adhesive



Product code	Description	Pack quantity
1520200	Multi purpose gap filling adhesive 295ml	12
1520060	Dispensing gun for 150ml and 300ml	1

- Multi use solvent free gap filling adhesive

Sealants and fillers



Product code	Description	Pack quantity
69FILL12	Towerfill white 295ml cartridge	12
69FIRE12	Towerfire white 295ml cartridge	12
69SEAL12	Towerseal white 295ml cartridge	12
69SEALC12	Towerseal clear 295ml cartridge	12
1520060	Dispensing gun for 150ml and 300ml	1

- Towerfill: Universal decorators caulk, permanently flexible white acrylic filler that is mould resistant. Fast and easy to use flexible acrylic for gap and crack filling. Can be overpainted after one hour.
- Towerfire: Low Smoke Intumescent Acrylic Sealant, maintains joint integrity for up to 4 hours in a fire.
- Towerseal: A multi purpose mould resistant silicone sealant which forms a flexible and durable weather tight seal. UV stabilised

Cable reels and extension leads

Cable reels



Product code	Description	Pack quantity
Thorsman cable reels		
4510080	10m 13A cassette 4 sockets cut out	1
4510090	10m 10A cassette 2 sockets cut out	6
4510092	25m 13A open 2 sockets cut out	1
4510094	40m 13A open 2 sockets cut out	1
4510096	50m 13A open 2 sockets cut out	1
4510093	25m 16A 110V open 2 sockets cut out	1
4510095	40m 16A 110V open 2 sockets cut out	1
Jojo cable reels		
JJR22516	25m 16A 110V 2 socket open cable reel	1
JJR42513	25m 13A 4 socket open cable reel	1
JJR45013	50m 13A 4 socket open cable reel	1
JJR43013RCD	30m 13A 4 socket open cable reel with RCD plug	1
JJR4513	5m 13A 4 socket cassette cable reel	1
JJR41010	10m 10A 4 socket cassette cable reel	1
JJR41013	10m 13A 4 socket cassette cable reel	1
JJR41510	15m 10A 4 socket cassette cable reel	6
Trailing leads		
4502105	14m 16A lead set 110V 1.5mm ²	1
4503107	14m 16A lead set 110V 2.5mm ²	1

- Jojo and Thorsman cable reels are manufactured to the highest quality standards
- Both cassette and open type cable reels, with a variety of cable lengths available to suit a range of applications
- Features a safety cut out in accordance with BS EN 61242
- All cable reels are BSI kitemarked, CE marked and conform to BS1363
- Trailing leads ideal for supporting lighting or power tool use on site, in conjunction with transformers and splitters.
- Leads incorporate a 3 pin 16A plug.

Extension leads



Product code	Description	Pack quantity
JJL15W	5m 13A 1 socket extension lead	1
JJL210W	10m 13A 2 socket extension lead	1
JJL41W	1m 13A 4 socket extension lead	1
JJL42W	2m 13A 4 socket extension lead	1
JJL43W	3m 13A 4 socket extension lead	1
JJL45W	5m 13A 4 socket extension lead	1
JJL410WRCD	10m 13A 4 socket extension lead with RCD plug	1
JJL42WHDC	2m 13A 4 socket heavy duty extension lead with switch and neon	1
JJL45WHDC	5m 13A 4 socket heavy duty extension lead with switch and neon	1
JJL42WHDC4	2m 13A 4 socket heavy duty extension lead individually switched with neon	1
JJL45WHDC4	5m 13A 4 socket heavy duty extension lead individually switched with neon	1
JJL42WSSC	2m 13A 4 socket extension lead with surge protection and two neons	1
JJL62WSSC	2m 13A 6 socket extension lead with surge protection and two neons	1
JJL62WHDC	2m 13A 6 socket heavy duty extension lead individually switched with neon	1

- Jojo extension leads are manufactured to the highest quality standards
- A wide range of features and cable lengths available
- Supplied with 1.25mm³ core PVC cable and are 13A rated
- All extension leads are CE marked and conform to BS1363

Extension leads, RCDs and timer

Unwired extension leads



Product code	Description	Pack quantity
400110	1 socket 13A heavy duty unwired orange extension socket	1
400286	8 socket 13A ultraslim unwired, switched white extension socket	1
400331	4 socket 13A heavy duty unwired, individually switched with neon, white extension socket	1
400333	6 socket 13A heavy duty unwired, switched with neon white extension socket	1
400444	4 socket 13A heavy duty unwired, switched with neon black extension socket	1
400550	1 socket 13A heavy duty unwired white extension socket	1
400555	2 socket 13A heavy duty unwired white extension socket	1
400460	2 socket 13A unwired white extension socket	1
400465	6 socket 13A heavy duty unwired, switched, fused, neon white extension socket	1
400470	4 socket 13A heavy duty unwired white extension socket	1

- Jojo unwired extension leads are manufactured to the highest quality standards
- A wide range of features available
- All unwired extension leads are CE marked and conform to BS1363

RCDs



Product code	Description	Pack quantity
400137	13A RCD plug in adaptor	1
400940	13A In line re-wireable RCD white	1
400945	13A Re-wireable RCD adaptor black	1

- Residual Current Devices (RCDs) offer protection and peace of mind for higher risk electrical equipment
- RCD plug in and re-wireable adaptors available
- RCDs offer 30mA tripping current, 30mS tripping time and are 13A rated
- All RCDs CE marked

Mechanical timer



Product code	Description	Pack quantity
400955	24 hour mechanical timer	1

- Allows control of the time lights or appliances switched on and off
- Ideal for added security in the home

Power tool accessories

Hammer SDS plus bit - THB



Product code	Description	Pack quantity
1788868A	4 x 160mm	1
1788926A	5 x 110mm	1
1788934A	5 x 160mm	1
1788975A	5.5 x 110mm	1
1788989A	5.5 x 160mm	1
1789023A	6 x 110mm	1
1789016A	6 x 160mm	1
1789028A	6.5 x 110mm	1
1789030A	6.5 x 160mm	1
1789052A	7 x 110mm	1
1789054A	7 x 160mm	1
1789080A	8 x 110mm	1
1789108A	8 x 160mm	1
1789116A	8 x 210mm	1
1789120A	8 x 260mm	1
1789153A	10 x 160mm	1
1789165A	10 x 210mm	1
1789195A	10 x 450mm	1
1789252A	12 x 160mm	1
1789272A	12 x 210mm	1
1789304A	12 x 250mm	1
1789319A	12 x 450mm	1
1789323A	12 x 600mm	1
1789350A	14 x 150mm	1
1789352A	14 x 200mm	1
1789410A	14 x 450mm	1
1789414A	14 x 600mm	1
1789440A	16 x 150mm	1
1789450A	16 x 200mm	1
1789455A	16 x 300mm	1
1789470A	16 x 450mm	1
1789481A	16 x 600mm	1
1789485A	18 x 450mm	1
1789500A	20 x 450mm	1
1789510A	20 x 600mm	1
1789520A	22 x 450mm	1
1789570A	25 x 450mm	1

- For use in concrete, brick, stone and rock
- Suitable for electro-pneumatic rotary hammer machines with an SDS fitting

SDS plus chisels



Product code	Description	Pack quantity
1773106A	20 x 250mm	1
1773107A	40 x 250mm	1

Power tool accessories

High speed steel rolled flute drill bits



Product code	Description	Pack quantity
Imperial		
1800032A	3/32"	10
1800049A	7/64"	10
1800056A	1/8"	10
1800063A	9/64"	10
1800094A	3/16"	10
1800131A	1/4"	10
1800216A	3/8"	5
Metric		
1800414A	1mm	10
1800421A	1.5mm	10
1800438A	2mm	10
1800445A	2.5mm	10
1800452A	3mm	10
1800456A	3.3mm	10
1800469A	3.5mm	10
1800476A	4mm	10
1800483A	4.5mm	10
1800490A	5mm	10
1800506A	5.5mm	10
1800513A	6mm	10
1800520A	6.5mm	10
1800537A	7mm	10
1800544A	7.5mm	10
1800568A	8mm	10
1800575A	8.5mm	10
1800582A	9mm	5
1800605A	10mm	5
1800612A	10.5mm	5
1800629A	11mm	5
1800643A	12mm	5
1800667A	13mm	5

- Suitable for metal, wood, plastic and steel
- Comprehensive range available in metric and imperial sizes
- Packed in plastic tubes

Imperial jobber drill bits



Product code	Description	Pack quantity
1800305A	1/8"	10
1800308A	3/16"	10
1800309A	3/32"	10

- Suitable for general use
- Imperial sizes only
- Packed in plastic tubes

Power tool accessories

Auger bits



Product code	Description	Pack quantity
Hexagonal shank		
1801130A	19 x 200mm	1
1801140A	22 x 200mm	1
1801150A	25 x 200mm	1
1801160A	32 x 200mm	1
SDS plus shank		
1806060A	19 x 200mm	1
1806070A	22 x 200mm	1
1806080A	25 x 200mm	1

- Suitable for drilling deep holes in hardwood, softwood, plywood, MDF etc

Flat bits



Product code	Description	Pack quantity
1801590A	13 x 152mm	1
1801619A	16 x 152mm	1
1801810A	19 x 160mm	1
1801626A	20 x 160mm	1
1801633A	22 x 152mm	1
1801640A	25 x 152mm	1
1801660A	32 x 160mm	1
1801680A	38 x 152mm	1
1802650A	6 piece set (10, 13, 16, 19, 22, 25 x 160mm)	1

- Manufactured from high quality carbon steel
- Suitable for use in hand and power tools
- Hexagonal shank to fit conventional drill

Step and taper drills



Product code	Description	Pack quantity
Step drills		
3310205A	No.2 (9 diameters) 4 - 20mm	1
3310210A	No.3 (14 diameters) 4 - 30mm	1
Taper drills		
3310105A	No.2 5 - 20mm	1
3310110A	No.3 16 - 30mm	1

- Each drill will cut a variety of hole diameters in many materials
- Manufactured from ground high speed steel
- Non-slip point produces its own pilot hole

Magnetic sockets



Product code	Description	Pack quantity
3752000	Hex size $\frac{5}{16}$ " - 6.3mm screw diameter	5

- Fits most leading brands of electric screwdrivers

Power tool accessories

Holesaws



Product code	Description	Pack quantity
3314010	16mm	1
3314030	20mm	1
3314040	22mm	1
3314050	25mm	1
3314070	32mm	1
3312090	38mm	1
3312100	40mm	1
3312110	44mm	1
3314120	51mm	1
3312630	54mm	1
3312130	57mm	1
3312199	60mm	1
3312140	64mm	1
3312198	67mm	1
3312150	70mm	1
3312196	73mm	1
3312160	76mm	1
3312195	79mm	1
3312197	83mm	1
3312194	86mm	1
3312193	89mm	1
3312192	92mm	1
3312191	95mm	1
3312180	102mm	1
3312189	105mm	1
3312187	111mm	1
3312186	114mm	1
3312184	127mm	1
3312181	152mm	1
3311910	Electricians holesaw kit 20, 25, 32, 38, 51, 64mm holesaws, A1 and A2 arbors	1

- Suitable for cutting a large variety of hole diameters in many different materials
- Variable pitch tooth design
- Industry standard fitting

Arbors



Product code	Description	Pack quantity
3314300	A1 arbor (14 - 30mm holesaws $\frac{3}{8}$ " hex)	1
3314310	A2 arbor (32 - 152mm holesaws $\frac{7}{16}$ " hex)	1
3314320	A10 arbor (32 - 152mm holesaws $\frac{3}{8}$ " hex)	1
3314308	SDS and arbor (14 - 30mm holesaws)	1
3313004	Pilot drill 1 (for A1, A2 & A10 arbors 82mm)	1
3313011	Pilot drill 2 (for A4 arbor 107mm)	1

- Interchangeable with all major brands

Hand tools

Electrical hand tools



Product code	Description	Pack quantity
VDE insulated softgrip screwdrivers - TVS		
1773831A	2.5 x 75mm slotted	1
1773832A	4 x 100mm slotted	1
1773833A	5.5 x 125mm slotted	1
1773834A	6.5 x 150mm slotted	1
1773835A	PZ1 x 80mm	1
1773836A	PZ2 x 100mm	1
VDE insulated softgrip pliers - TVP		
1773839A	160mm VDE combination	1
1773840A	180mm VDE combination	1
1773841A	200mm VDE combination	1
1773842A	200mm VDE snipe nose	1
1773845A	160mm VDE wire stripping	1
1773846A	160mm VDE snipe nose	1
1773850A	160mm VDE diagonal cutters	1
1773851A	180mm VDE diagonal cutters	1
1773855A	160mm VDE cable shears	1

- A range of VDE approved hand tools and tool sets, specifically designed for the professional electrician
- Handles are ergonomically designed with premium quality plastic for a comfortable grip and ease of use. Screwdriver handles incorporate a hanging hole for ease of storage.
- Screwdriver blades manufactured from high quality precision hardened steel, with a precision machined tip, which gives durability and accurate fitment. Plier and cutter heads are manufactured from hardened and tempered quality tool steel, for durability and quality.

Tool sets



Product code	Description	Pack quantity
1773830A	3 piece VDE plier and cutter set	1
1773862A	7 piece VDE screwdriver set	1

Crimping kit



Product code	Description	Pack quantity
08CRIMPKIT	Crimp tool connector kit	1

- Crimpkit contains 18 variant type connectors and a ratchet crimping tool
- Suitable for 1.5, 2.5 and 4mm insulated terminals

Cable tacker and staples



Product code	Description	Pack quantity
IMT70000	Professional cable tacker	1
IMT70001	45/10mm galvanised staples	5,000
IMT70002	60/10mm galvanised staples	5,000
IMT70003	45/10mm white staples	5,000

- For fastening low voltage telephone and alarm cable:
- Lightweight, with comfortable ABS handle
- Staples neatly into corners
- Safe and easy to load

Hand tools

Grab damaged screw remover



Product code	Description	Pack quantity
1775112	Grabit damaged screw remover	1

- Damaged screw and bolt remover.
- Removes screws and bolts cleanly from metal, wood and plastic

Re-threading tool



Product code	Description	Pack quantity
3310010	M3.5 thread	1

- Re-threading tool suitable for switch sockets and conduit boxes

Co-axial stripper



Product code	Description	Pack quantity
08CS1	Co-axial stripper	1

- Co-axial stripper is preset to strip cable to 8mm
- Adjustable 'V' block for RG58 and RG59 cable
- Two cutting blades with adjustable blade depth and finger ring for ease of use.

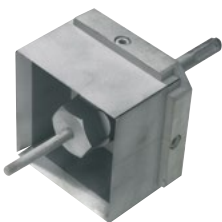
Fish wire draw tape



Product code	Description	Pack quantity
IMT38065	Nylon fish wire draw tape 10m	1
08FW20FH	Nylon fish wire draw tape 20m	1

- High strength nylon fish wire draw tape to run cables through confined spaces
- Supplied with fixed head terminals

Electricians box sinker



Product code	Description	Pack quantity
3310165	Quadcut single box sinker kit	1
3310170	6mm guide rod	1
3310180	Quadcut double box cutter only	1

- Quick and accurate fitting of metal back boxes
- Ideal for either single or double boxes
- Pre-drills the fixing hole
- Suitable for block or masonry

Fixings guide

	Application		
	Cable ladders, cable trays and mesh trays	Poles and posts perimeter	Mini trunking
Wall plugs p1/10	● 1	● 1	● 1
Metal and nylon cavity fixings - TPD p4/32	■	■	●
Hollow wall anchors p4/37	■	■	■
Through bolts p4/43	● 1	■	■
Shield anchors p4/38	● 1	■	■
Twin thread wood screws p4/31	■	■	● 1
Chipboard screws p4/33 - p4/34	■	■	● 1
Stainless steel wood screws p4/35	■	■	● 1
Combi roundhead screws p4/35	■	● 1	■
Machine screws p4/32	■	■	● 1
Roofing nuts and bolts p4/32	●	■	■
Drywall screws p4/40	■	■	● 1
Steel to steel self drilling screws p4/41	●	■	■
Gash point screws p4/42	■	■	■
Masonry nails p4/39	■	■	■
Fixing band p1/13	■	■	■
Cable clips p1/6 - p1/9	■	■	■

	Material		
	Concrete stone/rock	Hollow bricks and building blocks	Plaster board
Wall plugs p1/10	● 1	● 1	● 1
Metal and nylon cavity fixings - TPD p4/32	■	■	●
Hollow wall anchors p4/37	■	■	●
Through bolts p4/43	●	■	■
Shield anchors p4/38	●	■	■
Twin thread wood screws p4/31	● 2	● 1	● 2
Chipboard screws p4/33 - p4/34	● 2	● 2	● 2
Stainless steel wood screws p4/35	● 2	● 2	● 2
Combi roundhead screws p4/35	● 2	● 2	● 2
Machine screws p4/32	● 2	● 2	● 2
Roofing nuts and bolts p4/32	●	●	■
Drywall screws p4/40	■	■	●
Steel to steel self drilling screws p4/41	■	■	●
Gash point screws p4/42	■	■	■
Masonry nails p4/39	●	●	■
Fixing band p1/13	Dependant on fixing	Dependant on fixing	Dependant on fixing
Cable clips p1/6 - p1/9	■	■	●

Key

● = Suitable

■ = Not suitable

1 = Together with screws and/or plugs etc

2 = Together with plug

3 = Together with clip plug TCP

Perimeter trunking and cable distribution trunking	Installation boxes	Cables and conduits	Wiring accessories
● 1	● 1	■	● 1
●	■	■	●
●	■	■	●
■	■	■	●
■	■	■	●
● 1	● 2	■	● 2
● 1	● 2	■	● 2
● 2	● 2	■	● 2
■	● 2	■	● 2
● 2	● 2	■	● 2
■	■	■	■
● 1	■	■	■
■	■	■	● 2
■	■	■	● 2
■	■	■	● 2
■	■	■	● 2
■	■	●	● 2

Wooden board	Sheet metal	Wood	Plastic
● 1	■	■	● 1
■	■	■	●
●	●	■	●
■	■	■	●
■	■	■	●
● 2	■	● 2	● 2
● 2	■	● 2	● 2
● 2	■	● 2	● 2
● 2	■	● 2	● 2
● 2	■	● 2	● 2
●	●	●	■
●	●	●	■
●	●	●	● 2
●	●	●	● 2
■	■	■	● 2
Dependant on fixing	Dependant on fixing	Dependant on fixing	Dependant on fixing
●	■	●	● 2

Schneider Electric point of sale stands



We are dedicated to helping you sell more!

- Schneider Electric branded stands are available on free loan with a minimum £1,500 stock order per stand.
- Stands should only be used for the display of Schneider Electric branded products and remain the property of Schneider Electric.
- Single sided 1.6m stand dimensions: 1,030mm wide, by 550mm deep, by 1,650mm high.
- Double sided 1.6m gondola stand dimensions: 1,030mm wide, by 1,040mm deep, by 1,650mm high.
- Single sided 2m stand dimensions: 1,030mm wide, by 550mm deep, by 2,000mm high.

For more information, please ask your local Installation Materials sales representative.

Fixings

Twin thread wood screws



Product code	Description	Pack quantity
3736025	4 x 1/2"	200
3736032	4 x 5/8"	200
3736049	4 x 3/4"	200
3736056	4 x 1"	200
3736070	5 x 1/2"	200
3736087	5 x 5/8"	200
3736117	6 x 1/2"	200
3736124	6 x 5/8"	200
3719172	6 x 3/4"	200
3719196	6 x 1"	200
3719219	6 x 1 1/4"	200
3719226	6 x 1 1/2"	200
3736179	6 x 1 3/4"	200
3719240	6 x 2"	200
3736209	7 x 3/4"	200
3719301	7 x 1"	200
3719318	7 x 1 1/4"	200
3719325	7 x 1 1/2"	200
3719349	8 x 1/2"	200
3736278	8 x 5/8"	200
3719363	8 x 3/4"	200
3719387	8 x 1"	200
3719400	8 x 1 1/4"	200
3719417	8 x 1 1/2"	200
3719424	8 x 1 3/4"	200
3719431	8 x 2"	200
3736353	8 x 2 1/4"	200
3719455	8 x 2 1/2"	200
3736377	8 x 3"	200
3736391	10 x 3/4"	200
3719509	10 x 1"	200
3719516	10 x 1 1/4"	200
3719523	10 x 1 1/2"	200
3719530	10 x 1 3/4"	200
3719547	10 x 2"	200
3719554	10 x 2 1/4"	200
3719561	10 x 2 1/2"	100
3719585	10 x 3"	100
3736476	10 x 3 1/2"	100
3736483	10 x 4"	200
3736485	12 x 1"	200
3736506	12 x 1 1/4"	200
3736513	12 x 1 1/2"	200
3736520	12 x 2"	100
3736537	12 x 2 1/2"	100
3736544	12 x 3"	100
3736551	12 x 3 1/2"	100
3736568	12 x 4"	100
Yellow passivated		
3737500	7 x 1"	200
3737503	7 x 1 1/4"	200

- Suitable for wood, plastic and nylon wall plugs
- Through hardened and zinc plated finish
- Sharp gimlet point

Fixings

Brass pan head machine screws



Product code	Description	Pack quantity
3747113	M4 x 6mm	100
3747120	M4 x 8mm	100
3747137	M4 x 10mm	100
3747144	M4 x 12mm	100
3747151	M4 x 16mm	100
3747168	M4 x 20mm	100
3747175	M4 x 25mm	100
3747182	M4 x 30mm	100
3747199	M4 x 35mm	100
3747205	M4 x 40mm	100
3747212	M4 x 50mm	50
3747717	M4 Brass fullnuts	100
3747755	M4 Brass washers	100

- Suitable for many electrical installations
- Manufactured from solid brass material

Raised head machine screws



Product code	Description	Pack quantity
3746130	M3.5 x 25mm	100
3746154	M3.5 x 35mm	100
3746161	M3.5 x 40mm	100
3746178	M3.5 x 50mm	100
3746104	M3.5 x 50mm electroplated brass	100
3746192	M3.5 x 75mm	50
3747758	M3.5 x 35mm extension stud	100

- Suitable for socket boxes, switches etc
- BZP finish

Cavity fixings - TPD™



Product code	Description	Pack quantity
1220010	TPD™ nylon	100
1220104	TPD™ metal	100

- Ideal for light installations in plasterboard
- Supplied complete with screw
- Self-drilling design for easy installation

Roofing nuts and bolts



Product code	Description	Pack quantity
3750050	M6 x 12mm	200
3750060	M6 x 16mm	200
3750070	M6 x 20mm	200
3750080	M6 x 25mm	200
3750090	M6 x 30mm	200
3750100	M6 x 40mm	100
3750110	M6 x 50mm	100

- Suitable for many electrical installations
- Double slotted head with square nut
- BZP finish

Penny washers



Product code	Description	Pack quantity
3750056	M6 x 25mm steel zinc plated penny washer	100
3750057	M8 x 25mm steel zinc plated penny washer	100
3750058	M10 x 25mm steel zinc plated penny washer	100

- BZP finish

Fixings

Chipboard screws

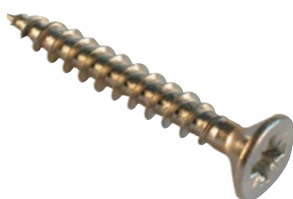


Product code	Metric gauge & length	Imperial gauge & length	Pack quantity
Yellow passivated			
3742026	3 x 13mm	4 x 1/2"	200
3742033	3 x 15mm	4 x 5/8"	200
3742037	3 x 17mm	4 x 11/16"	200
3742040	3 x 20mm	4 x 3/4"	200
3742057	3 x 25mm	4 x 1"	200
3742064	3 x 30mm	4 x 1 1/4"	200
3742088	3.5 x 13mm	6 x 1/2"	200
3742095	3.5 x 15mm	6 x 5/8"	200
3742098	3.5 x 17mm	6 x 11/16"	200
3742101	3.5 x 20mm	6 x 3/4"	200
3742118	3.5 x 25mm	6 x 1"	200
3742125	3.5 x 30mm	6 x 1 1/4"	200
3742127	3.5 x 35mm	6 x 1 3/8"	200
3742132	3.5 x 40mm	6 x 1 1/2"	200
3742170	4 x 15mm	8 x 3/4"	200
3742171	4 x 17mm	8 x 11/16"	200
3742187	4 x 20mm	8 x 3/4"	200
3742194	4 x 25mm	8 x 1"	200
3742200	4 x 30mm	8 x 1 1/4"	200
3742209	4 x 35mm	8 x 1 3/8"	200
3742217	4 x 40mm	8 x 1 1/2"	200
3742224	4 x 45mm	8 x 1 3/4"	200
3742231	4 x 50mm	8 x 2"	200
3742240	4 x 60mm	8 x 2 1/2"	200
3742247	4 x 70mm	8 x 2 3/4"	200
3742255	4.5 x 20mm	9 x 3/4"	200
3742262	4.5 x 25mm	9 x 1"	200
3742279	4.5 x 30mm	9 x 1 1/4"	200
3742280	4.5 x 35mm	9 x 1 3/8"	200
3742286	4.5 x 40mm	9 x 1 1/2"	200
3742293	4.5 x 45mm	9 x 1 3/4"	200
3742309	4.5 x 50mm	9 x 2"	200
3742323	5 x 20mm	10 x 3/4"	200
3742330	5 x 25mm	10 x 1"	200
3742347	5 x 30mm	10 x 1 1/4"	200
3742351	5 x 35mm	10 x 1 3/8"	200
3742354	5 x 40mm	10 x 1 1/2"	200
3742361	5 x 45mm	10 x 1 3/4"	200
3742378	5 x 50mm	10 x 2"	200
3742381	5 x 55mm	10 x 2 3/8"	200
3742385	5 x 60mm	10 x 2 1/2"	100
3742392	5 x 70mm	10 x 2 3/4"	100
3742408	5 x 75mm	10 x 3"	100
3742415	5 x 90mm	10 x 3 1/2"	100
3742422	5 x 100mm	10 x 4"	100
3742446	6 x 30mm	12 x 1 1/4"	200
3742453	6 x 40mm	12 x 1 1/2"	200
3742477	6 x 50mm	12 x 2"	100
3742484	6 x 60mm	12 x 2 1/2"	100
3742491	6 x 70mm	12 x 2 3/4"	100
3742507	6 x 80mm	12 x 3 1/2"	100
3742514	6 x 90mm	12 x 3 1/2"	100
3742521	6 x 100mm	12 x 4"	100

- Through hardened with yellow passivated or BZP finish
- Single thread design provides excellent holding in a variety of materials
- Wax coated to ease penetration
- All imperial equivalents are approximate

Fixings

Chipboard screws



Product code	Metric gauge & length	Imperial gauge & length	Pack quantity
BZP electro-plated			
3740026	3 x 13mm	4 x 1/2"	200
3740040	3 x 20mm	4 x 3/4"	200
3740088	3.5 x 13mm	6 x 1/2"	200
3740095	3.5 x 15mm	6 x 5/8"	200
3740101	3.5 x 20mm	6 x 3/4"	200
3740118	3.5 x 25mm	6 x 1"	200
3740125	3.5 x 30mm	6 x 1 1/4"	200
3740132	3.5 x 40mm	6 x 1 1/2"	200
3740179	4 x 15mm	8 x 5/8"	200
3740187	4 x 20mm	8 x 3/4"	200
3740194	4 x 25mm	8 x 1"	200
3740197	4 x 30mm	8 x 1 1/4"	200
3740198	4 x 35mm	8 x 1 3/8"	200
3740137	4 x 40mm	8 x 1 1/2"	200
3740140	4 x 45mm	8 x 1 3/4"	200
3740141	4 x 50mm	8 x 2"	200
3740142	4 x 60mm	8 x 2 1/2"	200
3740143	4 x 70mm	8 x 2 3/4"	200
3740144	5 x 20mm	10 x 3/4"	200
3740145	5 x 30mm	10 x 1 1/4"	200
3740146	5 x 40mm	10 x 1 1/2"	200
3740148	5 x 50mm	10 x 2"	200
3740152	5 x 60mm	10 x 2 1/2"	100
3740153	5 x 70mm	10 x 2 3/4"	100
3740151	5 x 75mm	10 x 3"	100
3740158	5 x 100mm	10 x 4"	100

- Through hardened with yellow passivated or BZP finish
- Single thread design provides excellent holding in a variety of materials
- Wax coated to ease penetration
- All imperial equivalents are approximate

Decking screws



Product code	Description	Pack quantity
3743860	4 x 50mm	200
3743861	4 x 60mm	200
3743862	4 x 70mm	100
3743863	5 x 80mm	100
3743864	5 x 90mm	100

- 1,000 hours salt spray tested
- Ideal for decking, fencing and exterior applications
- Double countersunk head
- Pozi drive
- Sharp point, coarse thread
- Green coating to match timber

Roundhead wood screws



Product code	Description	Pack quantity
3737507	8 x 1"	200
3737506	8 x 1 1/4"	200
3737505	8 x 1 1/2"	200
3737508	8 x 2"	200

- Suitable for wood, plastic and nylon wall plugs
- Through hardened and zinc plated finish
- Sharp gimlet point

Fixings

Combi roundhead screws



Product code	Description	Pack quantity
3743182	3 x 13mm	200
3743183	3 x 15mm	200
3743184	3 x 20mm	200
3743185	3 x 25mm	200
3743368	3.5 x 13mm	200
3743180	3.5 x 15mm	200
3743192	3.5 x 20mm	200
3743193	3.5 x 25mm	200
3743194	3.5 x 30mm	200
3743195	3.5 x 40mm	200
3743187	4 x 13mm	200
3743188	4 x 15mm	200
3743190	4 x 20mm	200
3743191	4 x 25mm	200
3743207	4 x 30mm	200
3743215	4 x 40mm	200
3743220	4 x 50mm	200
3743222	5 x 20mm	200
3743337	5 x 25mm	200
3743344	5 x 30mm	200
3743351	5 x 40mm	200
3743360	5 x 50mm	200
3743365	5 x 60mm	100
3743366	5 x 70mm	100
3743367	5 x 75mm	100

- Available with a BZP finish on hardened steel
- Combination head can be used with slotted or pozi screwdriver
- Single thread provides excellent grip in many materials

Stainless steel wood screws



Product code	Description	Pack quantity
3743800	4 x 25mm	200
3743802	4 x 30mm	200
3743804	4 x 40mm	200
3743806	4 x 50mm	200
3743808	4 x 60mm	200
3743810	4 x 70mm	200
3743820	5 x 25mm	200
3743822	5 x 30mm	200
3743824	5 x 40mm	200
3743826	5 x 50mm	200
3743828	5 x 60mm	100
3743830	5 x 70mm	100
3743832	5 x 80mm	100
3743834	5 x 90mm	100
3743836	5 x 100mm	100
3743840	6 x 40mm	200
3743842	6 x 50mm	100
3743844	6 x 60mm	100
3743846	6 x 70mm	100
3743848	6 x 80mm	100
3743850	6 x 90mm	100
3743852	6 x 100mm	100

- Solid A302 (A2) stainless steel
- Single thread design
- Pozi drive
- Countersunk head
- High resistance to corrosion

Fixings

Brass wood screws



Product code	Description	Pack quantity
Recessed		
3739026	4 x 1/2"	200
3739033	4 x 5/8"	200
3739057	4 x 1"	200
3739125	6 x 3/4"	200
3739132	6 x 1"	200
3739149	6 x 1 1/4"	200
3739156	6 x 1 1/2"	200
3739194	7 x 1"	200
3739200	7 x 1 1/4"	200
3739255	8 x 3/4"	200
3739262	8 x 1"	200
3739279	8 x 1 1/4"	200
3739286	8 x 1 1/2"	200
3739309	8 x 2"	200
3739354	10 x 1"	200
3739361	10 x 1 1/4"	200
3739378	10 x 1 1/2"	200
3739392	10 x 2"	200
3739415	10 x 2 1/2"	100
3739422	10 x 3"	100
Slotted		
3701313	4 x 1/2"	200
3701337	4 x 5/8"	200
3701344	4 x 3/4"	200
3701368	4 x 1"	200
3701513	6 x 3/4"	200
3701521	6 x 1"	200
3701539	6 x 1 1/4"	200
3701547	6 x 1 1/2"	200
3701554	7 x 1"	200
3701588	8 x 3/4"	200
3701596	8 x 1"	200
3701604	8 x 1 1/4"	200
3701612	8 x 1 1/2"	200
3701620	8 x 2"	200
3701624	8 x 2 1/2"	200
3701642	10 x 1 1/4"	200
3701646	10 x 1 1/2"	200
3701650	10 x 1 3/4"	200
3701653	10 x 2"	200
3701661	10 x 2 1/2"	100
3701687	12 x 2 1/2"	100

- Available with slotted or recessed heads
- Manufactured from non-corrosive solid brass with sharp gimlet point
- Suitable for wood, plastic and nylon plugs

Fixings

Hollow wall anchors - TMX™



Product code	Description	Sheet thickness	Screw length	Pack quantity
1260025	4E (409)	5 - 15mm	40mm	100
1260066	4D (423)	16 - 26mm	50mm	50
1260130	5M (510)	6 - 13mm	38mm	50
1260108	5E (514)	3 - 16mm	57mm	50
1260124	5D (527)	12 - 32mm	70mm	50
1260140	6E (614)	3 - 16mm	57mm	50
1260165	6D (627)	23 - 32mm	70mm	50
1265040	Tool			1

- Ideal for overhead cavity fixing
- Available to suit a wide range of plasterboard thicknesses
- Calibrated legs spread the load and give a fully captive fixing
- All metal fire resistant fixing
- Mounting tool for expanding

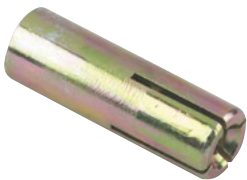
Sleeve anchors



Product code	Description	Pack quantity
1501500	8 x 40mm	100
1501506	8 x 65mm	100
1501510	8 x 85mm	100
1501520	10 x 50mm	100
1501526	10 x 80mm	50
1501530	10 x 97mm	50
1501540	12 x 60mm	50
1501546	12 x 75mm	50
1501550	12 x 99mm	30
1501556	12 x 129mm	30
1501560	16 x 65mm	20
1501570	16 x 147mm	15
Hexagonal head type		
1501035	10 x 80mm	50
1501040	10 x 100mm	50

- Suitable for fixing into concrete, brick, stone and dense concrete blocks
- Quick and easy through-fixing installation
- Available in standard nut or bolt head types

Wedge anchors



Product code	Description	Pack quantity
2810109	Wedge anchor M6 x 25mm	100
2810125	Wedge anchor M8 x 30mm	100
2810141	Wedge anchor M10 x 40mm	50
2810166	Wedge anchor M12 x 50mm	50
2810182	Wedge anchor M16 x 60mm	25
2810901	M6 setting tool	1
2810927	M8 setting tool	1
2810943	M10 setting tool	1

- Suitable for concrete, stone, solid brick and blocks
- Economical with simple hammer in installation
- Captive wedge ideal for overhead work

Fixings

Shield anchor projection bolts - PB



Product code	Description	Pack quantity
1511100	M6 x 65mm PB610	100
1511103	M6 x 85mm PB625	75
1511106	M8 x 70mm PB810	50
1511108	M8 x 105mm PB840	45
1511109	M8 x 120mm PB860	40
1511110	M8 x 140mm PB880	30
1511112	M10 x 85mm PB1015	30
1511115	M10 x 100mm PB1030	25
1511118	M10 x 130mm PB1060	20
1511120	M10 x 160mm PB1090	20
1511124	M12 x 115mm PB1225	20
1511126	M12 x 135mm PB1250	15
1511027	M12 x 100mm LB1230	20

- For use in concrete, stone, rock and brick
- Hole tolerant, ideal for wall or overhead fixing
- All steel construction

Shield anchor loose bolts - LB



Product code	Description	Pack quantity
1511000	M6 x 50mm LB610	100
1511003	M6 x 70mm LB625	100
1511004	M6 x 90mm LB640	80
1511006	M8 x 60mm LB810	50
1511009	M8 x 80mm LB830	50
1511012	M8 x 90mm LB840	50
1511015	M10 x 70mm LB1010	30
1511018	M10 x 80mm LB1025	30
1511021	M10 x 100mm LB1050	25
1511022	M10 x 130mm LB1075	20
1511024	M12 x 80mm LB1210	20
1511027	M12 x 100mm LB1230	20

- Ideal for fixing heavy machines, fans, industrial doors and switch gear
- Four segment shield for even expansion
- All steel construction

Shield anchors



Product code	Description	Pack quantity
1511203	M8 x 55mm	100
1511206	M10 x 65mm	50
1511209	M12 x 75mm	25

- Suitable for supporting suspended ceilings, chain barriers and lighting fixings
- Hole tolerant compared with other types of anchor bolt
- All steel construction

Hooks and eyes



Product code	Description	Pack quantity
1511231	Hook M6	50
1511234	Hook M8	25
1511224	Eye M6	50
1511227	Eye M8	25
1511230	Eye M10	25

- Provides a secure anchorage for a variety of applications
- Includes hexagon nut and flat washer
- Shield anchor sold separately

Fixings

Masonry nails



Product code	Description	Pack quantity
Light gauge 2.5mm diameter		
3790000	25mm	100
3790002	30mm	100
3790004	35mm	100
3790006	40mm	100
3790093	45mm	100
3790010	50mm	100
3790014	60mm	100
Medium gauge 3mm diameter		
3790030	25mm	100
3790032	30mm	100
3790034	35mm	100
3790036	40mm	100
3790038	45mm	100
3790040	50mm	100
3790044	60mm	100
3790046	65mm	100
3790048	70mm	100
3790050	75mm	100
3790094	80mm	100
Heavy gauge 3.5mm diameter		
3790062	30mm	100
3790064	35mm	100
3790066	40mm	100
3790068	45mm	100
3790070	50mm	100
3790074	60mm	100
3790091	65mm	100
3790078	70mm	100
3790092	75mm	100
3790082	80mm	100
3790086	90mm	100
3790090	100mm	100
Capping nails		
3790204	2.5 x 25mm	100
3790207	2.5 x 30mm	100
3790208	2.5 x 35mm	100
Dome head nails		
3743865	2.5 x 18mm	250

- Suitable for fixing into brick, block and concrete
- C1075 grade steel, through hardened to 50 - 54 HRC and bright zinc plated
- Available in light, medium and heavy gauge
- Zinc plated finish

Fixings

Drywall screws



Product code	Description	Pack quantity
Fine thread - grey phosphate		
3746125	3.5 x 25mm	1,000
3746132	3.5 x 32mm	1,000
3746138	3.5 x 38mm	1,000
3746142	3.5 x 42mm	1,000
3746145	3.5 x 45mm	1,000
3746105	3.5 x 50mm	500
3746155	3.5 x 55mm	500
3746160	3.5 x 60mm	500
3746651	4.2 x 65mm	500
3746751	4.2 x 75mm	500
3746752	4.2 x 100mm	250
Fine thread - zinc plated		
3745025	3.5 x 25mm	1,000
3745032	3.5 x 32mm	1,000
3745038	3.5 x 38mm	1,000
3745042	3.5 x 42mm	1,000
3745045	3.5 x 45mm	1,000
3745050	3.5 x 50mm	500
3745055	3.5 x 55mm	500
3745060	3.5 x 60mm	500
3745065	4.2 x 65mm	500
3745075	4.2 x 75mm	500
3745066	4.2 x 100mm	250
Coarse thread - grey phosphate		
3746308	3.9 x 32mm	1,000
3746310	3.9 x 35mm	1,000
3746012	3.9 x 38mm	1,000
3746314	3.9 x 45mm	1,000
3746316	3.9 x 50mm	500
3746318	3.9 x 55mm	500

- Bugle head with phillips recess, fine thread or coarse
- Available with grey phosphate or zinc plated finish
- Suitable for plasterboard, fibreboard, partitions and suspended ceilings
- CE marked

Self drilling drywall screws

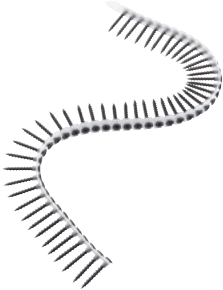


Product code	Description	Pack quantity
3745210	3.5 x 25mm	1,000
3745212	3.5 x 32mm	1,000
3745214	3.5 x 38mm	1,000
3745216	3.5 x 42mm	1,000
3745218	3.5 x 50mm	1,000
3745230	4.2 x 65mm	500
3745232	4.2 x 75mm	500
3745400	4.2 x 13mm wafer head	1,000
3745405	4.2 x 13mm pan head	1,000

- Self drilling version for heavy duty applications
- Bugle head with phillips recess
- CE marked

Fixings

Collated drywall screws



Product code	Description	Pack quantity
Grey phosphate		
3746770	3.5 x 25mm fine	1,000
3746772	3.5 x 35mm fine	1,000
3746774	3.9 x 25mm coarse	1,000
3745223	3.9 x 32mm coarse	1,000
3746782	3.9 x 35mm coarse	1,000
3746784	3.9 x 41mm coarse	1,000
3746783	3.9 x 45mm coarse	1,000
3746156	3.9 x 50mm coarse	1,000
3746786	3.9 x 55mm coarse	1,000
Zinc plated		
3746900	3.5 x 25mm fine	1,000
3746902	3.5 x 35mm fine	1,000
3746906	3.9 x 35mm coarse	1,000
3746908	3.9 x 41mm coarse	1,000
3746912	3.9 x 55mm coarse	1,000

- Bugle head with phillips recess
- Fits popular makes of collated screw gun
- Thread: coarse - timber fine - steel
- CE marked

Steel to steel self drilling screws



Product code	Description	Pack quantity
Light section - 3.5mm maximum thickness		
3752260	5.5 x 25mm 3pt	100
3752265	5.5 x 32mm 3pt	100
3752270	5.5 x 38mm 3pt	100
3752275	5.5 x 50mm 3pt	100
Light section 19mm bonded washer - maximum thickness 3.5mm		
3752261	5.5 x 25mm 3pt	100
3752266	5.5 x 32mm 3pt	100
3752271	5.5 x 38mm 3pt	100
3752276	5.5 x 50mm 3pt	100
Heavy section 16mm bonded washer - maximum thickness 12.5mm		
3752210	5.5 x 22mm 4pt	100
3752215	5.5 x 32mm 5pt	100
3752220	5.5 x 40mm 5pt	100
3752225	5.5 x 60mm 5pt	100
3752230	5.5 x 80mm 5pt	100
3752235	5.5 x 100mm 5pt	100
Heavy section 19mm bonded washer - maximum thickness 12.5mm		
3752216	5.5 x 32mm 5pt	100
3752221	5.5 x 40mm 5pt	100
3752226	5.5 x 60mm 5pt	100
3752231	5.5 x 80mm 5pt	100
3752236	5.5 x 100mm 5pt	100

- Hexagon washer headed self drilling screws
- Drills and fastens in one operation
- 5/16" hexagonal head (magnetic socket available P 4/24)
- Available with 16 and 19mm EDPM bonded washers
- 3mm thick bonding reduces the likelihood of leaks
- High thread screws provide a secure fix through insulation
- CE marked

Washerless steel to steel screws

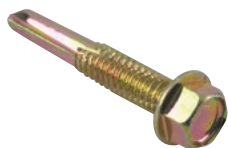


Product code	Description	Pack quantity
Light section - 3.5mm maximum thickness		
3752290	5.5 x 25mm 3pt	100
3752292	5.5 x 32mm 3pt	100
3752294	5.5 x 38mm 3pt	100
3752296	5.5 x 50mm 3pt	100

- CE marked

Fixings

Washerless steel to steel screws



Product code	Description	Pack quantity
Heavy section - 12.5mm maximum thickness		
3752250	5.5 x 22mm 4pt	100
3752252	5.5 x 32mm 5pt	100
3752254	5.5 x 40mm 5pt	100

- CE marked

Reduced point stitching screws



Product code	Description	Pack quantity
3752410	6.3 x 25mm 16mm washer	100
3752411	6.3 x 25mm 19mm washer	100

- Ideal for joining thin metal sheets

Gash point screws



Product code	Description	Pack quantity
3752110	6.3 x 32mm 16mm washer	50
3752111	6.3 x 32mm 19mm washer	50
3752115	6.3 x 45mm 16mm washer	50
3752116	6.3 x 45mm 19mm washer	50

- Ideal for fixing sheet and cladding materials to timber frames, re-roofing, barns etc
- Washers have 3mm bonding, reducing the likelihood of leaks
- 1.5 - 4mm maximum thickness
- CE marked

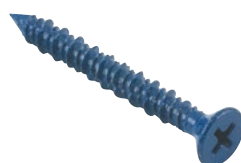
Timber to steel self drilling screws



Product code	Description	Pack quantity
Light section - 1.5 - 4mm maximum thickness		
3752560	5.5 x 40mm 3pt	100
3752565	5.5 x 60mm 3pt	100
3752570	5.5 x 80mm 3pt	100
3752575	5.5 x 100mm 3pt	100
3752580	5.5 x 110mm 3pt	100
Heavy section - 12mm maximum thickness		
3752510	5.5 x 50mm 5pt	100
3752515	5.5 x 60mm 5pt	100
3752520	5.5 x 70mm 5pt	100
3752525	5.5 x 85mm 5pt	100
3752530	5.5 x 109mm 5pt	100

- Wings ream clearance hole to prevent material jacking
- Ribbed head aids self embedment
- Tight clamping action
- Suitable for fixing mezzanine floors, firelining, chipboard, roof and floor sheets to steelwork
- Automotive coachbuilding bodywork application
- CE marked

Masonry screws



Product code	Description	Pack quantity
Countersunk phillips head		
3703210	4.8 x 32mm	100
3703215	4.8 x 45mm	100
3703220	4.8 x 57mm	100
3703225	4.8 x 70mm	100
3703230	4.8 x 82mm	100
3703235	4.8 x 100mm	100
3703260	6.3 x 57mm	100
3703265	6.3 x 70mm	100
3703275	6.3 x 100mm	100
3703280	6.3 x 125mm	100
Hexagon head		
3703065	6.3 x 70mm hex size 5/16"	100

- Suitable for rapid anchoring directly into most masonry materials
- Available in countersunk or hexagon heads
- No wall plug required

Fixings

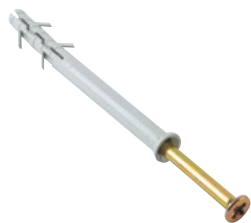
Through bolts



Product code	Description	Pack quantity
BZP electro-plated		
IMT38005	M6 x 40mm	100
IMT38006	M6 x 70mm	100
IMT38007	M8 x 50mm	100
IMT38008	M8 x 95mm	50
IMT38009	M10 x 60mm	50
IMT38010	M10 x 105mm	25
IMT38011	M12 x 85mm	25
IMT38012	M12 x 125mm	25
Hot dipped zinc		
IMT38013	M6 x 40mm	100
IMT38014	M6 x 70mm	100
IMT38015	M8 x 50mm	100
IMT38016	M8 x 95mm	50
IMT38017	M10 x 60mm	50
IMT38018	M10 x 105mm	25
IMT38019	M12 x 85mm	25
IMT38020	M12 x 125mm	25
Stainless steel acid proof (A4)		
IMT38021	M6 x 40mm	100
IMT38022	M6 x 70mm	100
IMT38023	M8 x 50mm	100
IMT38024	M8 x 95mm	50
IMT38025	M10 x 60mm	50
IMT38026	M10 x 105mm	25

- Suitable for through fixing into concrete, stone and rock
- Popular sizes have twin clip design
- Available in BZP electro-plated, hot dipped zinc or stainless steel acid proof (A4)

Frame fixings - TFF



Product code	Description	Pack quantity
1130110	8 x 80mm	100
1130115	8 x 100mm	100
1130120	8 x 120mm	100
1130155	10 x 80mm	50
1130160	10 x 100mm	50
1130165	10 x 120mm	50
1130170	10 x 140mm	50
1130175	10 x 160mm	50

- For through fixing installations such as doors and window frames, trunking, switches and battens
- Fast installation
- Powerful expansion

Hammer fixings - THI



Product code	Description	Pack quantity
1131110	5 x 30mm	100
1131115	5 x 50mm	100
1131130	6 x 35mm	100
1131135	6 x 50mm	100
1131140	6 x 60mm	100
1131145	6 x 70mm	100
1131160	8 x 60mm	100
1131165	8 x 80mm	100
1131170	8 x 100mm	100
1131175	8 x 120mm	100

- Hammer in fixing for fast installation into a wide variety of materials
- Knock-in protection prevents premature expansion during installations
- High load values

Fixings

Nylon window frame anchors - TNW



Product code	Description	Pack quantity
1501610	8 x 100mm	100
1501615	8 x 140mm	100
1501630	10 x 75mm	100
1501635	10 x 100mm	100
1501640	10 x 120mm	100
1501645	10 x 140mm	100
1501650	10 x 165mm	100

- Suitable for the installation of uPVC, aluminium and wooden window frames and doors
- High grade nylon sleeve and zinc plated screw prevents corrosion
- Complete with cover cap
- GRP expansion wedge

Platti plugs - TPP



Product code	Description	Pack quantity
1200005	10 x M4S	100
1200401	13 x M5S	100
1200443	13 PLUG	1,000
1200203	10 x M4K (hook)	100

- Suitable for a range of plasterboard thicknesses
- A captive fixing - even without screw
- Phillips head screw
- All metal construction
- High load values

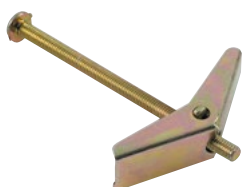
Duo max - TSP



Product code	Description	Pack quantity
1240001	6 x 50mm	25
1248004	10 x 65mm	25
1249002	10 x 75mm	25

- Suitable for a range of plasterboard thicknesses
- A captive fixing - even without screw
- Corrosion resistant
- High load values

Spring toggles - TOG



Product code	Description	Pack quantity
1208016	10 M3 x 50mm	50
1208057	15 M5 x 50mm	50
1208060	15L M5 x 80mm	50

- Ideal for overhead cavity fixing
- Spreads loads over a wide area
- Easy installation



Product index

Index

Reference	PG	Reference	PG	Reference	PG	Reference	PG	Reference	PG
2001008	5	2214001A	6	77CB04P	8	1090725	10	3000296	12
2011005	5	2215000A	6	77CW04P	8	1090615	10	3000938	12
2011017	5	2215001A	6	77CB05P	8	1060030	10	3000410	12
2011021	5	65SA04W	6	77CW05P	8	1060040	10	3000420	12
2022009	5	65SA08W	6	77CB06P	8	1060050	10	3000430	12
2022010	5	65SA12W	6	77CW06P	8	1060060	10	3000440	12
2022029	5	65CT05B	6	77CR06P	8	1060070	10	CHOCBOXTH	12
2032011	5	65CT10B	6	77CB07P	8	1060080	10	3280210	12
2032041	5	70CWRC275	7	77CW07P	8	1776015	10	3280215	12
2032091	5	70CWRC35	7	77CR07P	8	1776020	10	3280220	12
2032061	5	70CBRC4	7	77CB09P	8	1776111	10	3280225	12
2041200	5	70CWRC4	7	77CW09P	8	1776200	10	3280010	12
2041259	5	70CBRC5	7	77CR09P	8	05TUB04	10	3280015	12
2042011	5	70CWRC5	7	77CB12PAC	8	05TUB05	10	3280020	12
2042021	5	70CBRC6	7	77CW12PAC	8	1776112	10	3280035	12
2042041	5	70CWRC6	7	77CB15PAC	8	2420100	11	IMT36179	12
2052011	5	70CBRC7	7	77CW15P	8	2420101	11	IMT36180	12
2052051	5	70CWRC7	7	77CB19P	8	2420102	11	IMT37303	12
2060002	5	70CBRC8	7	77CW19P	8	2420103	11	IMT37307	12
2060135	5	70CWRC8	7	77CB25P	8	2420104	11	IMT37311	12
2070209	5	70CBRC9	7	77CW25P	8	2420105	11	IMT37314	12
2070134	5	70CWRC9	7	77CGPF1P	8	2420106	11	IMT37304	12
2101004	5	70CBRC10	7	77CGPF25P	8	2420107	11	IMT37308	12
2106003	5	70CWRC10	7	77CGPF4P	8	2420108	11	IMT46026	13
2111003	5	70CBRC11	7	77CGPF10P	8	2420110	11	IMT46064	13
2111029	5	70CWRC11	7	55PP1	8	2420111	11	IMT46149	13
2116010	5	70CBRC12	7	64LSF26R	9	2420112	11	IMT46101	13
2116028	5	70CWRC12	7	64LSF26W	9	2420113	11	IMT46918	13
2126019	5	70CBRC14	7	64LSF28R	9	2420114	11	IMT46919	13
2126027	5	70CWRC14	7	64LSF28W	9	2420115	11	IMT46248	13
2131019	5	70CBRC16	7	64LSF30R	9	2420116	11	IMT46286	13
2131027	5	70CWRC16	7	64LSF30W	9	2420117	11	IMT46033	13
2136018	5	70CGKF10	7	64LSF32R	9	2420118	11	IMT46071	13
2136026	5	70CGKF15	7	64LSF32W	9	2420300	11	IMT46156	13
2137014	5	70CGKF25	7	64LSF34R	9	2420301	11	IMT46118	13
2141026	5	70CGKF40	7	64LSF34W	9	2420302	11	IMT46968	13
2146025	5	70CGKF60	7	64LSF37R	9	2420303	11	IMT46969	13
2201000A	6	70CGKF100	7	64LSF37W	9	2420304	11	IMT46970	13
2201001A	6	70CGKF160	7	64LSF40R	9	2423000	11	IMT46293	13
2202011A	6	70CG3CE	7	64LSF40W	9	2423100	11	55CTP640B100	13
2202000A	6	70CGDKF15	7	64LSF43R	9	2424000	11	2705110	13
2202005A	6	70CGDKF25	7	64LSF43W	9	2424004	11	2705310	13
2203000A	6	70CWPT	7	64LSF272R	9	2424005	11	2705320	13
2203002A	6	70CWPM	7	64LSF272W	9	25EC365	11	2705420	13
2203004A	6	70CWSM	7	64LSF302R	9	27GY2	11	2700610	13
2203005A	6	72CB05P	8	64LSF342R	9	27GY3	11	2700630	13
2205000A	6	72CT05P	8	64LSF342W	9	27GY4	11	2700650	13
2205002A	6	72CW05P	8	1001007	10	27GY5	11	2703015	13
2206000A	6	72CB06P	8	1003003	10	27GY6	11	2704013	13
2206002A	6	72CT06P	8	1005008	10	27BN3	11	2700510	13
2210000A	6	72CW06P	8	IMT48000	10	27BN4	11	2700511	13
2211000A	6	72CB07P	8	IMT48001	10	27BU3	11	2700513	13
2212000A	6	72CT07P	8	1090600	10	27BU4	11	2700530	13
2213000A	6	72CW07P	8	1090605	10	3000254	12	2700531	13
2213001A	6	72CBKF40	8	1090720	10	3000270	12	2700533	13
2214000A	6	72CBKF60	8	1090610	10	3000288	12	2700710	13

Index

Reference	PG	Reference	PG	Reference	PG	Reference	PG	Reference	PG
LBW20SK	14	MP202DR	16	3000971	18	JJL45W	20	1789500A	22
LBW20K	14	MP25DW	16	21RCK10	18	JJL410WRCD	20	1789510A	22
LBW25K	14	MP25DB	16	4304018	18	JJL42WHDC	20	1789520A	22
LBW32K	14	MP32DW	16	4304025	18	JJL45WHDC	20	1789570A	22
LBW40K	14	MP32DB	16	4304032	18	JJL42WHDC4	20	1773106A	22
LBW50K	14	MPL20W	16	4304019	18	JJL45WHDC4	20	1773107A	22
LBW63K	14	MPL20B	16	4304026	18	JJL42WSSC	20	1800032A	23
LCW20SK	14	MPL202B	16	4301010	18	JJL62WSSC	20	1800049A	23
LCW20K	14	MP10B	16	4301015	18	JJL62WHDSC	20	1800056A	23
LCW25K	14	MP16W	16	4301020	18	400110	21	1800063A	23
LCW32K	14	MP16B	16	4301040	18	400286	21	1800094A	23
LCW40K	14	MP20W	16	4301045	18	400331	21	1800131A	23
LCW50K	14	MP20B	16	2053015	18	400333	21	1800216A	23
LCW63K	14	MP20R	16	78PCW10AC	18	400444	21	1800414A	23
MBW20SK	14	MP202B	16	5320100	18	400550	21	1800421A	23
MBW20K	14	MP202R	16	5320210	18	400555	21	1800438A	23
MBW25K	14	MP25W	16	5322010	18	400460	21	1800445A	23
MBW32K	14	MP25B	16	5322160	18	400465	21	1800452A	23
MBW40K	14	MP25R	16	5322110	18	400470	21	1800456A	23
MBW50K	14	MP252W	16	5322020	18	400137	21	1800469A	23
MBW63K	14	MP252B	16	5322180	18	400940	21	1800476A	23
3BW20SK	14	ML10B	16	5322130	18	400945	21	1800483A	23
3BW20K	14	ML16W	16	5106010	18	400955	21	1800490A	23
3BW25K	14	ML16B	16	5322465	18	1788868A	22	1800506A	23
3BW32K	14	ML20W	16	5322470	18	1788926A	22	1800513A	23
3BW40K	14	ML20B	16	1520002	19	1788934A	22	1800520A	23
3BW50K	14	ML20R	16	1520005	19	1788975A	22	1800537A	23
3BW63K	14	ML25W	16	1520030	19	1788989A	22	1800544A	23
MCW20SK	15	ML25B	16	1520200	19	1789023A	22	1800568A	23
MCW20K	15	ML25R	16	69FILL12	19	1789016A	22	1800575A	23
MCW25K	15	MS3	17	69FIRE12	19	1789028A	22	1800582A	23
MCW32K	15	MS4	17	69SEAL12	19	1789030A	22	1800605A	23
MCW40K	15	MS5	17	69SEALC12	19	1789052A	22	1800612A	23
MCW50K	15	MS6	17	1520060	19	1789054A	22	1800629A	23
MCW63K	15	MS7	17	4510080	20	1789080A	22	1800643A	23
SH20	15	MS8	17	4510090	20	1789108A	22	1800667A	23
SH20S	15	MS9	17	4510092	20	1789116A	22	1800305A	23
SH25	15	MS10	17	4510094	20	1789120A	22	1800308A	23
SH32	15	MS11	17	4510096	20	1789153A	22	1800309A	23
MBM20S	15	MS12	17	4510093	20	1789165A	22	1801130A	24
MBM25S	15	MS14	17	4510095	20	1789195A	22	1801140A	24
MBM15S	15	MS16	17	JJR22516	20	1789252A	22	1801150A	24
MBM20L	15	MS18	17	JJR42513	20	1789272A	22	1801160A	24
MBM32L	15	MS20	17	JJR45013	20	1789304A	22	1806060A	24
M101005	15	MT9	17	JJR43013RCD	20	1789319A	22	1806070A	24
M130806	15	MT10	17	JJR4513	20	1789323A	22	1806080A	24
M151107	15	MT11	17	JJR41010	20	1789350A	22	1801590A	24
M181407	15	MT12	17	JJR41013	20	1789352A	22	1801619A	24
M241808	15	MT14	17	JJR41510	20	1789410A	22	1801810A	24
MP16DW	16	MT15	17	4502105	20	1789414A	22	1801626A	24
MP16DB	16	MJ2	17	4503107	20	1789440A	22	1801633A	24
MP20DW	16	3000952	18	JJL15W	20	1789450A	22	1801640A	24
MP20DB	16	3000956	18	JJL210W	20	1789455A	22	1801660A	24
MP20DR	16	3000959	18	JJL41W	20	1789470A	22	1801680A	24
MP202DW	16	3000965	18	JJL42W	20	1789481A	22	1802650A	24
MP202DB	16	3000969	18	JJL43W	20	1789485A	22	3310205A	24

Index

Reference	PG	Reference	PG	Reference	PG	Reference	PG	Reference	PG
3310210A	24	1773862A	26	3736513	31	3742187	33	3740145	34
3310105A	24	08CRIMPKIT	26	3736520	31	3742194	33	3740146	34
3310110A	24	IMT70000	26	3736537	31	3742200	33	3740148	34
3752000	24	IMT70001	26	3736544	31	3742209	33	3740152	34
3314010	25	IMT70002	26	3736551	31	3742217	33	3740153	34
3314030	25	IMT70003	26	3736568	31	3742224	33	3740151	34
3314040	25	1775112	27	3737500	31	3742231	33	3740158	34
3314050	25	3310010	27	3737503	31	3742240	33	3743860	34
3314070	25	08CS1	27	3747113	32	3742247	33	3743861	34
3312090	25	IMT38065	27	3747120	32	3742255	33	3743862	34
3312100	25	08FW20FH	27	3747137	32	3742262	33	3743863	34
3312110	25	3310165	27	3747144	32	3742279	33	3743864	34
3314120	25	3310170	27	3747151	32	3742280	33	3737507	34
3312630	25	3310180	27	3747168	32	3742286	33	3737506	34
3312130	25	3736025	31	3747175	32	3742293	33	3737505	34
3312199	25	3736032	31	3747182	32	3742309	33	3737508	34
3312140	25	3736049	31	3747199	32	3742323	33	3743182	35
3312198	25	3736056	31	3747205	32	3742330	33	3743183	35
3312150	25	3736070	31	3747212	32	3742347	33	3743184	35
3312196	25	3736087	31	3747717	32	3742351	33	3743185	35
3312160	25	3736117	31	3747755	32	3742354	33	3743368	35
3312195	25	3736124	31	3746130	32	3742361	33	3743180	35
3312197	25	3719172	31	3746154	32	3742378	33	3743192	35
3312194	25	3719196	31	3746161	32	3742381	33	3743193	35
3312193	25	3719219	31	3746178	32	3742385	33	3743194	35
3312192	25	3719226	31	3746104	32	3742392	33	3743195	35
3312191	25	3736179	31	3746192	32	3742408	33	3743187	35
3312180	25	3719240	31	3747758	32	3742415	33	3743188	35
3312189	25	3736209	31	1220010	32	3742422	33	3743190	35
3312187	25	3719301	31	1220104	32	3742446	33	3743191	35
3312186	25	3719318	31	3750050	32	3742453	33	3743207	35
3312184	25	3719325	31	3750060	32	3742477	33	3743215	35
3312181	25	3719349	31	3750070	32	3742484	33	3743220	35
3311910	25	3736278	31	3750080	32	3742491	33	3743222	35
3314300	25	3719363	31	3750090	32	3742507	33	3743337	35
3314310	25	3719387	31	3750100	32	3742514	33	3743344	35
3314320	25	3719400	31	3750110	32	3742521	33	3743351	35
3314308	25	3719417	31	3750056	32	3740026	34	3743360	35
3313004	25	3719424	31	3750057	32	3740040	34	3743365	35
3313011	25	3719431	31	3750058	32	3740088	34	3743366	35
1773831A	26	3736353	31	3742026	33	3740095	34	3743367	35
1773832A	26	3719455	31	3742033	33	3740101	34	3743800	35
1773833A	26	3736377	31	3742037	33	3740118	34	3743802	35
1773834A	26	3736391	31	3742040	33	3740125	34	3743804	35
1773835A	26	3719509	31	3742057	33	3740132	34	3743806	35
1773836A	26	3719516	31	3742064	33	3740179	34	3743808	35
1773839A	26	3719523	31	3742088	33	3740187	34	3743810	35
1773840A	26	3719530	31	3742095	33	3740194	34	3743820	35
1773841A	26	3719547	31	3742098	33	3740197	34	3743822	35
1773842A	26	3719554	31	3742101	33	3740198	34	3743824	35
1773845A	26	3719561	31	3742118	33	3740137	34	3743826	35
1773846A	26	3719585	31	3742125	33	3740140	34	3743828	35
1773850A	26	3736476	31	3742127	33	3740141	34	3743830	35
1773851A	26	3736483	31	3742132	33	3740142	34	3743832	35
1773855A	26	3736485	31	3742170	33	3740143	34	3743834	35
1773830A	26	3736506	31	3742171	33	3740144	34	3743836	35

Index

Reference	PG	Reference	PG	Reference	PG	Reference	PG	Reference	PG
3743840	35	1501500	37	3790004	39	3746012	40	3752250	42
3743842	35	1501506	37	3790006	39	3746314	40	3752252	42
3743844	35	1501510	37	3790093	39	3746316	40	3752254	42
3743846	35	1501520	37	3790010	39	3746318	40	3752560	42
3743848	35	1501526	37	3790014	39	3745210	40	3752565	42
3743850	35	1501530	37	3790030	39	3745212	40	3752570	42
3743852	35	1501540	37	3790032	39	3745214	40	3752575	42
3739026	36	1501546	37	3790034	39	3745216	40	3752580	42
3739033	36	1501550	37	3790036	39	3745218	40	3752510	42
3739057	36	1501556	37	3790038	39	3745230	40	3752515	42
3739125	36	1501560	37	3790040	39	3745232	40	3752520	42
3739132	36	1501570	37	3790044	39	3745400	40	3752525	42
3739149	36	1501035	37	3790046	39	3745405	40	3752530	42
3739156	36	1501040	37	3790048	39	3746770	41	3703210	42
3739194	36	2810109	37	3790050	39	3746772	41	3703215	42
3739200	36	2810125	37	3790094	39	3746774	41	3703220	42
3739255	36	2810141	37	3790062	39	3745223	41	3703225	42
3739262	36	2810166	37	3790064	39	3746782	41	3703230	42
3739279	36	2810182	37	3790066	39	3746784	41	3703235	42
3739286	36	2810901	37	3790068	39	3746783	41	3703260	42
3739309	36	2810927	37	3790070	39	3746156	41	3703265	42
3739354	36	2810943	37	3790074	39	3746786	41	3703275	42
3739361	36	1511100	38	3790091	39	3746900	41	3703280	42
3739378	36	1511103	38	3790078	39	3746902	41	3703065	42
3739392	36	1511106	38	3790092	39	3746906	41	IMT38005	43
3739415	36	1511108	38	3790082	39	3746908	41	IMT38006	43
3739422	36	1511109	38	3790086	39	3746912	41	IMT38007	43
3701313	36	1511110	38	3790090	39	3752260	41	IMT38008	43
3701337	36	1511112	38	3790204	39	3752265	41	IMT38009	43
3701344	36	1511115	38	3790207	39	3752270	41	IMT38010	43
3701368	36	1511118	38	3790208	39	3752275	41	IMT38011	43
3701513	36	1511120	38	3743865	39	3752261	41	IMT38012	43
3701521	36	1511124	38	3746125	40	3752266	41	IMT38013	43
3701539	36	1511126	38	3746132	40	3752271	41	IMT38014	43
3701547	36	1511000	38	3746138	40	3752276	41	IMT38015	43
3701554	36	1511003	38	3746142	40	3752210	41	IMT38016	43
3701588	36	1511004	38	3746145	40	3752215	41	IMT38017	43
3701596	36	1511006	38	3746105	40	3752220	41	IMT38018	43
3701604	36	1511009	38	3746155	40	3752225	41	IMT38019	43
3701612	36	1511012	38	3746160	40	3752230	41	IMT38020	43
3701620	36	1511015	38	3746651	40	3752235	41	IMT38021	43
3701624	36	1511018	38	3746751	40	3752216	41	IMT38022	43
3701642	36	1511021	38	3746752	40	3752221	41	IMT38023	43
3701646	36	1511022	38	3745025	40	3752226	41	IMT38024	43
3701650	36	1511024	38	3745032	40	3752231	41	IMT38025	43
3701653	36	1511027	38	3745038	40	3752236	41	IMT38026	43
3701661	36	1511203	38	3745042	40	3752410	41	1130110	43
3701687	36	1511206	38	3745045	40	3752411	41	1130115	43
1260025	37	1511209	38	3745050	40	3752110	41	1130120	43
1260066	37	1511231	38	3745055	40	3752111	41	1130155	43
1260130	37	1511234	38	3745060	40	3752115	41	1130160	43
1260108	37	1511224	38	3745065	40	3752116	41	1130165	43
1260124	37	1511227	38	3745075	40	3752290	41	1130170	43
1260140	37	1511230	38	3745066	40	3752292	41	1130175	43
1260165	37	3790000	39	3746308	40	3752294	41	1131110	43
1265040	37	3790002	39	3746310	40	3752296	41	1131115	43

Index

Reference	PG
1131130	43
1131135	43
1131140	43
1131145	43
1131160	43
1131165	43
1131170	43
1131175	43
1131180	44
1501610	44
1501615	44
1501630	44
1501635	44
1501640	44
1501645	44
1501650	44
1200005	44
1200401	44
1200443	44
1200203	44
1240001	44
1248004	44
1249002	44
1208016	44
1208057	44
1208060	44

Notes



UK contact details -

0870 608 8 608

Fax 0870 608 8 606

Ireland contact details -

01 601 2200

Fax 01 601 2201

As a global specialist in energy management with operations in more than 100 countries, Schneider Electric offers integrated solutions across multiple market segments, including leadership positions in energy and infrastructure, industrial processes, building automation and data Centers/networks, as well as a broad presence in residential applications.

Focused on making energy safe, reliable, efficient, productive and green, the company's 150,000 plus employees achieved sales of 24 billion euros in 2013, through an active commitment to help individuals and organisations Make the most of their energySM.

We are changing our brand names and becoming one Schneider Electric. You'll get the same great quality products, but from one name you can remember and trust. This provides you and your customers with the reassurance associated with Schneider Electric.

Some of our market leading brands have already become Schneider Electric including **Merlin Gerin, Telemecanique, Square D, GET, Mita, Sarel, Himel, Thorsman, Tower** and **TAC**.

Working as one Schneider Electric makes it clearer that our ranges are highly compatible for integrated solutions.

Schneider Electric Ltd

United Kingdom
Stafford Park 5,
Telford
Shropshire
TF3 3BL
Tel: 0870 608 8 608
Fax: 0870 608 8 606
www.schneider-electric.com/uk

Ireland
Head office,
Block a
Maynooth Business Campus
Maynooth, Co. Kildare
Tel: (01) 601 2200
Fax: (01) 601 2201
www.schneider-electric.com/ie

Schneider Electric Limited is a company registered in England and Wales.
Registered number: 1407228. Registered office: Stafford Park 5, Telford, Shropshire TF3 3BL.

© 2014 Schneider Electric. All Rights Reserved. Schneider Electric, Active Energy Management, Compact, EcoStruxure, ION Enterprise, iRIO, Make the most of your energy, Masterpact, Micrologic, Power Plant To Plug, Modbus and PowerLogic are owned by Schneider Electric Industries SAS, or its affiliated companies in the United States and other countries.

As standards, specifications and designs change from time to time, please ask for confirmation of the information given in this publication.

member of

