

Assembly of other products using:  
body/light assemblies: see page 53  
accessories: see pages 56 and 60


## Control and signalling units Ø 22

### Harmony® XB4, metal

#### Pilot lights with integral LED and with BA 9s base fitting

#### Pilot lights with integral LED and transformer (1.2 VA, 24 V secondary)

Screw clamp terminal connections (Schneider Electric anti-retightening system)

Shape of head	Supply voltage V	Colour	Reference (1)	Weight kg
<b>Complete units - With plain lens</b>				
	~ 400 - 50 Hz (1)	White	<b>XB4 BV5B1</b> <span style="color:red">n</span>	0.172
		Green	<b>XB4 BV5B3</b> <span style="color:red">n</span>	0.172
		Red	<b>XB4 BV5B4</b> <span style="color:red">n</span>	0.172
		Orange	<b>XB4 BV5B5</b> <span style="color:red">n</span>	0.172
		Blue	<b>XB4 BV5B6</b> <span style="color:red">n</span>	0.172



080702



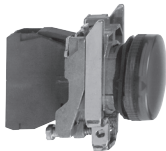
XB4 BV5B●

#### Pilot lights with BA 9s base fitting, with plain or grooved lens

Screw clamp terminal connections (Schneider Electric anti-retightening system)

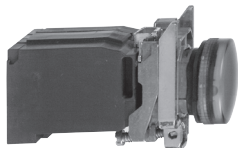
Shape of head	Supply voltage V	Colour	Reference	Weight kg
<b>Complete units - With plain lens</b>				
■ Direct supply, for BA 9s bulb, U ≤ 250 V, 2.4 W max (bulb not included)				
	≤ 250	White	<b>XB4 BV61</b> (ZB4 BV6 + ZB4 BV01)	0.075
		Green	<b>XB4 BV63</b> (ZB4 BV6 + ZB4 BV03)	0.075
		Red	<b>XB4 BV64</b> (ZB4 BV6 + ZB4 BV04)	0.075
		Orange	<b>XB4 BV65</b> (ZB4 BV6 + ZB4 BV05)	0.075
■ Via integral transformer, 1.2 VA, 6 V secondary, with BA 9s incandescent bulb (included)				
	~ 110...120 - 50/60 Hz	White	<b>XB4 BV31</b> (ZB4 BV3 + ZB4 BV01)	0.152
		Green	<b>XB4 BV33</b> (ZB4 BV3 + ZB4 BV03)	0.152
		Red	<b>XB4 BV34</b> (ZB4 BV3 + ZB4 BV04)	0.152
		Orange	<b>XB4 BV35</b> (ZB4 BV3 + ZB4 BV05)	0.152
	~ 230 - 50 Hz ~ 220...240 - 60 Hz	White	<b>XB4 BV41</b> (ZB4 BV4 + ZB4 BV01)	0.152
		Green	<b>XB4 BV43</b> (ZB4 BV4 + ZB4 BV03)	0.152
		Red	<b>XB4 BV44</b> (ZB4 BV4 + ZB4 BV04)	0.152
		Orange	<b>XB4 BV45</b> (ZB4 BV4 + ZB4 BV05)	0.152

814114





XB4 BV64

814117



XB4 BV33

#### Heads only (2)

Shape of head	For use with body comprising light source type	Colour of lens	Reference	Weight kg
■ With plain lens				
	<b>With BA 9s base fitting</b>	White	<b>ZB4 BV01</b>	0.027
		Green	<b>ZB4 BV03</b>	0.027
		Red	<b>ZB4 BV04</b>	0.027
		Orange	<b>ZB4 BV05</b>	0.027
		Blue	<b>ZB4 BV06</b>	0.027
		Clear	<b>ZB4 BV07</b>	0.027
■ With grooved lens (3)				
	<b>With BA 9s base fitting</b>	White	<b>ZB4 BV01S</b>	0.027
		Green	<b>ZB4 BV03S</b>	0.027
		Red	<b>ZB4 BV04S</b>	0.027
		Orange	<b>ZB4 BV05S</b>	0.027
		Blue	<b>ZB4 BV06S</b>	0.027
		Clear	<b>ZB4 BV07S</b>	0.027

814213



ZB4 BV04

523788



ZB4 BV06S

(1) For order ~ 440...460 V - 60 Hz transformer blocks, please replace «5» in the reference by «8». Example: XB4 BV5B1 becomes XB4 BV8B1. To order ~ 550...600 V - 60 Hz blocks, please replace «5» by «9». Example: XB4 BV5B1 becomes XB4 BV9B1.

(2) Only for use with bodies comprising a light source with BA 9s base fitting (incandescent, neon or LED).

(3) For use in bright ambient light conditions (outdoors in sunlight, for example).

n New

General :  
page 6

Characteristics :  
page 14

Dimensions :  
page 68

## References

Assembly of other products using:  
body/contact assemblies: see page 44  
accessories: see page 58

# Control and signalling units Ø 22


Harmony® XB4, metal

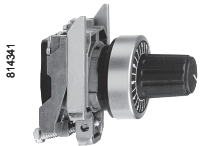
Specific functions

Pushbuttons for manual overload reset, hour counters, buzzers, fuse carrier




XB4 BA801

Manual overload reset pushbuttons					
Shape of head	Travel mm	Actuation distance mm	Colour	Reference	Weight kg
	10	6...16	Black	<b>XB4 BA821</b>	0.037
			Red	<b>XB4 BA841</b>	0.037
			Blue	<b>XB4 BA861</b>	0.037
		16...26	Black	<b>XB4 BA822</b>	0.038
			Red	<b>XB4 BA842</b>	0.038
			Blue	<b>XB4 BA862</b>	0.038
	14	30...130	Black	<b>XB4 BA921</b>	0.058
			Red	<b>XB4 BA941</b>	0.058
			Blue	<b>XB4 BA961</b>	0.058
		130...257	Black	<b>XB4 BA922</b>	0.071
			Red	<b>XB4 BA942</b>	0.071
			Blue	<b>XB4 BA962</b>	0.071



ZB4 BD912

Heads + mounting base for potentiometer (1)				
Shape of head	Description	For use with	Reference	Weight kg
	For potentiometer with shaft length 45 to 50 mm	Ø 6 mm shaft	<b>ZB4 BD912</b>	0.080
		Ø 6.35 mm shaft	<b>ZB4 BD922</b>	0.080



XB5 DS

Hour counters			
Characteristics	Supply voltage V	Reference	Weight kg
Indication 0...9999.9	≈ 12...24 - 50/60 Hz	<b>XB5 DSB</b>	0.045
	≈ 120 - 60 Hz	<b>XB5 DSG</b>	0.045
	≈ 230...240 - 50 Hz	<b>XB5 DSM</b>	0.045



XB5 KS

Annunciators (IP 40 NEMA 1)			
85 db buzzer: 4 kHz, with continuous or intermittent operation (connection diagram: see page 74)	≈ 24 - 50/60 Hz	<b>XB5 KSB</b>	0.035
	≈ 120 - 50/60 Hz	<b>XB5 KSG</b>	0.035
	≈ 230...240 - 50 Hz	<b>XB5 KSM</b>	0.035



XB5 DT1S

Fuse carrier			
Description	For use with	Reference	Weight kg
Fuse carrier	5 x 20 mm fuse 6.3 A - 250 V	<b>XB5 DT1S</b>	0.022

(1) Potentiometer not included.