

# EAT•N | Holec

## The solution for metering in switchgear for medium voltage distribution

- Compact
- Flexible
- Safe
- Economic

### The metering system that meets your demands

- Application of your current- and voltage transformers
- Easy disassembly and assembly for calibration
- Sealed secondary connections possible
- Safe arc resistant enclosure
- Easy connection with XLPE cables
- Easy to install (compact)



Metering panel.



**Combined with our SVS and Xiria switchgear this metering panel is the ideal solution for tariff metering.**

## Medium voltage metering unit

### Electrotechnical data

Rated voltage	12 kV	24 kV	IEC
Rated normal current busbar system	630	630	A
Impulse withstand voltage	75	125	kV
Rated frequency	50/60	50/60	Hz
Power frequency withstand voltage	28/1	50/1	kV/min.
Rated short-time withstand current	20/1	16/1	kA/s
Rated peak withstand current	50	40	kA
Internal arc resistance	20/1	16/1	kA/s
Degree of protection	IP 20	IP 20	IP 20
Primary XLPE cable connections max.	300	300	mm <sup>2</sup>

### Standards

All components comply with the following publications:

System	IEC 60298
Current transformers	IEC 60044-1
Voltage transformers	IEC 60044-2
Dimensions current- and voltage transformers	DIN 42600 T.8/T.9 - Small
Type test certificate	PEHLA 0117RA
Colour	RAL 7047 (Telegrey 4)

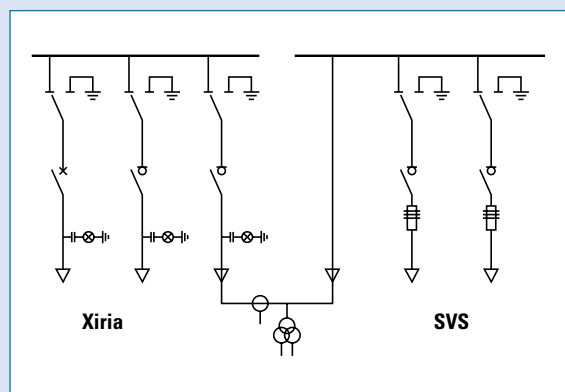
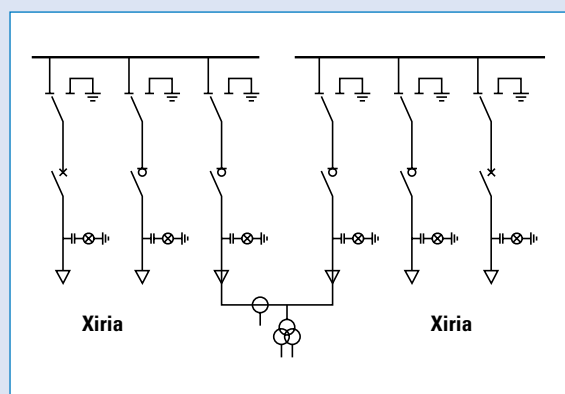
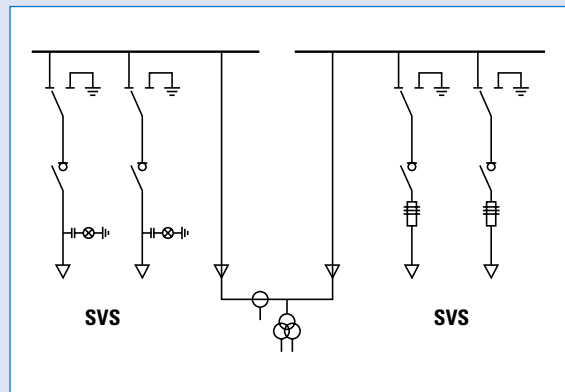
### Dimensions

	12 kV	24 kV
Panel width	650 mm	850 mm
Panel height	1300 mm	1300 mm
Panel depth	725 mm	725 mm

### Secondary equipment

On request

## Applications



Eaton Electric B.V.  
 P.O. Box 23  
 7550 AA Hengelo  
 The Netherlands  
 Tel.: +31 74 246 40 17  
 Fax: +31 74 246 40 25  
 holec-info@eaton.com

© 2005 Eaton Electric B.V.  
 All rights reserved

Printed in the Netherlands  
 Form No. 994 169 A/1/SG  
 June 2005

www.eatonelectrical.com