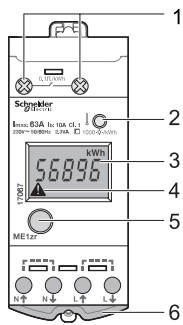


EN40p.

## Description

### EN40, EN40p

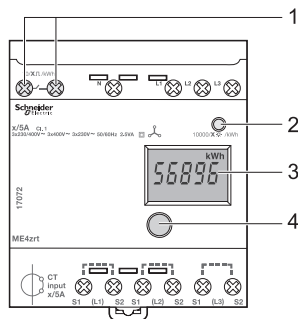
- 1 Allow the comb busbar to pass.
- 2 Remote transfer pulse output (EN40p).
- 3 Green power-on indicator light.
- 4 Yellow metering indicator light (flashing).
- 5 Display unit.
- 6 Seal.



MEzr.

### ME1, ME1z, ME1zr

- 1 Pulse output for remote transfer (ME1zr).
- 2 Flashing meter indicator.
- 3 Total or partial meter display (ME1z, ME1zr).
- 4 Wiring error indicator.
- 5 Push-button: total or partial meter display, reset partial meter (ME1z, ME1zr).
- 6 Sealing connection.



ME4zrt.

### ME3, ME3zr, ME4, ME4zr, ME4zrt

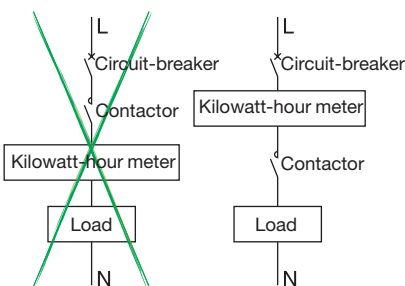
- 1 Pulse output for remote transfer (ME3zr, ME4zr, ME4zrt).
- 2 Flashing meter indicator.
- 3 Total or partial meter display (ME3zr, ME4zr, ME4zrt) and CT rating display (ME4zrt).
- 4 Push-button: total or partial meter display (ME3zr, ME4zr, ME4zrt), reset partial meter, display or selection of CT rating (ME4zrt).

## Installation

- The front panel of the product is IP40 and its housing is IP20
- Its installation must be appropriate to the operating conditions
- The protection must not be less than IP65 for outdoor use

## Use with a contactor

A measurement instrument is normally continually supplied. For a non-continuous supply (load switching), we recommend that you place the breaking device downstream from the measurement instrument to limit disturbances on the module inputs. These disturbances, particularly on inductive loads, may result in early ageing of the device. You must also place the measurement instrument at a distance from the breaking device to limit the risk of disturbance.



Example: meter on a load switching