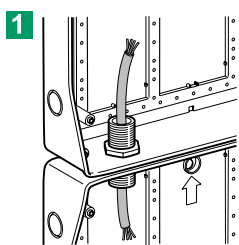
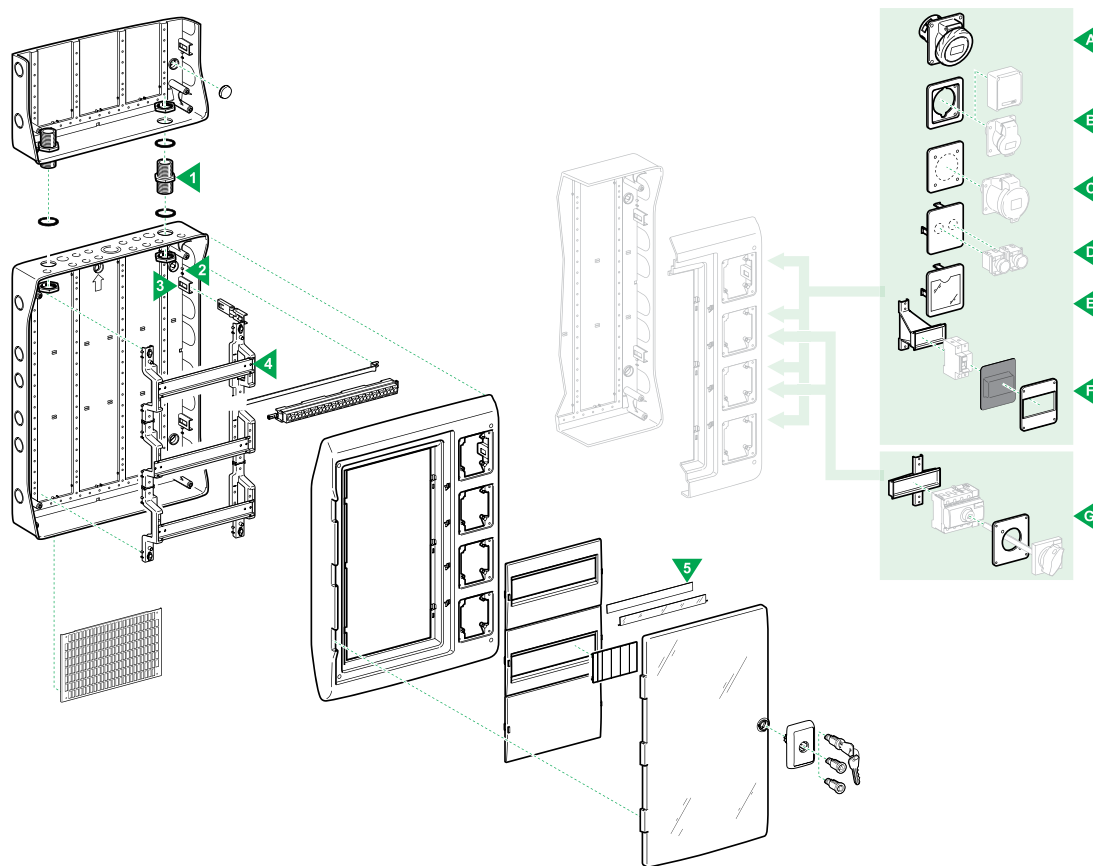
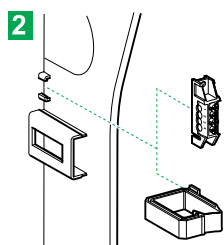


# Enclosures for modular switchgear with interface

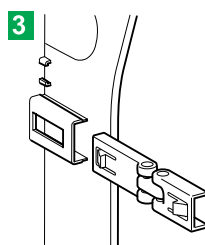
Kaedra



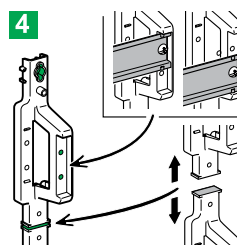
**1 Add-on possibility**  
Enclosures can be horizontally or vertically associated keeping the IP65 and allowing cable insertion.



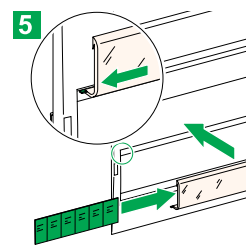
**2 Dovetails**  
Arranged on the back and on the chassis, they can accommodate:  
■ 4-hole terminal blocks  
■ Wiring straps



**3 Back/front face hinges**  
Clipped onto the right or left, they simplify cabling and working on the interface zone.



**4 Chassis**  
■ DIN symmetrical rails positionable in 2 depths and 2 heights to privilege cabling room  
■ Chassis that can be severed to install a mounting plate on the back



**5 Marking**  
Clip-on label covers ensure neat, quick and upgradeable marking.

## 10

### Everything for the interface

Direct mounting

With plate  
Part no 13136

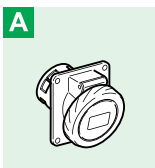
With plate  
Part no 13137

With plate  
Part no. 13138

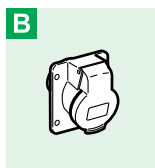
With plate  
Part no 13141

With kit  
Part no 13140

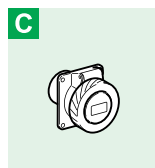
With kit  
Part no 13139



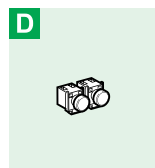
**A**  
16/32 A slanting power outlets (90 x 100 mm).



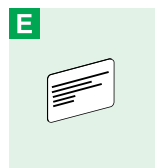
**B**  
LV power outlets (65 x 85 mm).



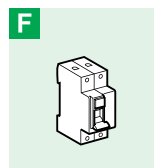
**C**  
LV and ELV power outlets (65 x 65 mm and 75 x 75 mm).



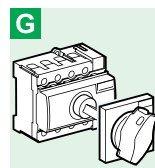
**D**  
Buttons, indicator lights and switches 16 and 22 mm diameter.



**E**  
Identification label



**F**  
Modular switchgear up to 4 modules (e.g. residual current circuit breaker).



**G**  
INS40/63/80 A.