

| | |
|---------------------|--------------------------|
| Reference | CM350705 |
| Barrier | Flexible and rigid walls |
| Wall thickness | ≥ 100 mm |
| Ø cable | OD ≤ Ø 14 mm |
| Cable loading | One or two cables |
| Opening size | Ø 25 mm |
| Fire resistance | EN 1366-3 |
| Fire classification | EN 13501-2 |
| Performance | EI 120 |

Not at scale. Units in millimeters

Ordering information



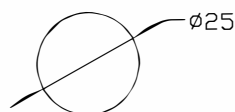
CM350705



.....



.....



Opening size

