

# Hypra® Prisinter IP 44/55 - LV 16/32/63 A

panel mounting interlocked switched sockets

## Technical information

Icc 10 kA according to BS EN 60309-1, BS EN 60309-2, IEC 60309-1 and IEC 60309-2

IP rating according to BS EN 60529 and IEC 60529 :

IP 44 when plug inserted

IP 54 when used with IP 66/67-55 straight plugs

IP 55 with cover closed or used with IP 66/67-55 angled plugs

IK according to BS EN 62262 and IEC 62262 :

IK 09 : Plastic

IK 10 : Metal

Stainless steel screws

Brass contacts

### Resistance to glow wire and dielectric strength

Glow wire :

960° C for live part supports

650° C for other parts

Dielectric strength : 3 000 V 50 Hz

### Temperatures

-20 °C to + 100 °C (+80 °C with auxiliary fitted)

Installation : -20 °C / +40 °C

Use : -20 °C / +100 °C

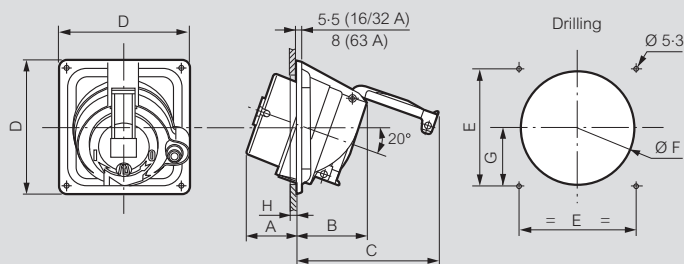
**Hypra Prisinter breaking capacity at 3 x 400 V $\sim$  according to BS EN 60947-1, BS EN 60947-3, IEC 60947-1 and IEC 60947-3 :**

Category	16 A	32 A	63 A
AC 1	16 A	32 A	63 A
AC 23	8.4 kW	16.8 kW	33 kW
AC 3	8.4 kW	16.8 kW	33 kW

## Dimensions

### Prisinter panel mounting sockets IP 44/55 - LV 16/32/63 A

(p. 84-85)



	Material	Weight (kg)	A (mm)	B (mm)	C (mm)	D (mm)	E (mm)	F (mm)		G (mm)	H (mm)
								min.	max.		max.
<b>LV 16 A</b>											
2 P + $\perp$	Plastic	0.42	46	70	132	115	100	92	98	46	6 to 10
3 P + $\perp$	Plastic	0.48	46	70	138	115	100	92	96	46	6 to 10
	Metal	1.33									
3 P + N + $\perp$	Plastic	0.57	46	75	156	125	110	102	106	51.5	7
	Metal	1.47									
<b>LV 32 A</b>											
2 P + $\perp$	Plastic	0.57	54	77	153	143	125	115	122	58.5	10 to 20
3 P + $\perp$	Plastic	0.61	54	77	153	143	125	115	122	58.5	10 to 20
	Metal	1.5									
3 P + N + $\perp$	Plastic	0.65	55	79	169	143	125	119	122	58.5	9 to 13
	Metal	1.8									
<b>LV 63 A</b>											
3 P + $\perp$	Plastic	0.95	55	99	205	143	125	120	122	59.5	10 to 20
	Metal	1.85									
3 P + N + $\perp$	Plastic	0.98	55	99	205	143	125	120	122	59.5	10 to 20
	Metal	2.2									

## Accessories

Auxiliary contacts (-20 °C to +80 °C)

Prisinter sockets can accommodate two c/o auxiliary contacts (late make/early break) Cat. No. 0521 96 p. 84

These may be used to signal to a central control/monitoring station or control a contactor to remove load

Padlockable cover in closed position