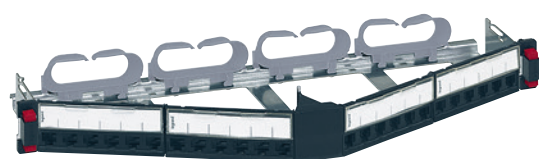
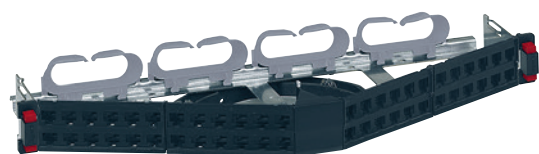


Legrand cabling system LCS³ Cat. 6

angled patch panels to be equipped with connectors



0337 92



0337 94



0337 63



Selection chart **p. 10-11**
Equipment and accessories **opposite**
Technical information **p. 31-33**

Pack	Cat. Nos.	Angled 24-connector patch panels - 1U
1	0337 92	Complete with new generation Quick-Fix for automatic mounting (no screws required) on the risers of cabinets or enclosures Universal mounting on any cabinet or enclosure Panel ensures automatic earthing of each connector Equipped with rear cable guide to hold the cables during maintenance Angled panel to be equipped with connectors Can accept up to 24 Cat. 5e to Cat. 8 RJ 45 connectors 19" panel - 1U
1	0337 94	Angled high density 48-connector patch panel - 1U to be equipped Complete with new generation Quick-Fix for automatic mounting (no screws required) on the risers of cabinets or enclosures Universal mounting on any cabinet or enclosure Panel ensures automatic earthing of each connector Equipped with rear cable guide to hold the cables during maintenance Angled panel to be equipped with connectors Can accept up to 48 Cat. 5e to Cat. 6A RJ 45 connectors 19" panel - 1U
1	0337 63	Cat. 6 high density RJ 45 connectors Conform to ISO/IEC 11801 edition 3.0 (2017) and EIA/TIA 568 C2-1 standards Cat. 6 RJ 45 connectors for flat and angled panels Quick-connect connection (no tools required), with 568 A/B marking Supplied with coloured labels For equipment to be installed in the cassettes of flat or angled panels Set of 6 Cat. 6 RJ 45 connectors
1	0337 64	UTP
1	0337 65	FTP
1	0337 65	STP

Legrand cabling system LCS³ Cat. 6

equipment and accessories



0337 56



0337 59



0337 55



0337 57



0337 58



Selection chart **p. 11**
Technical information **p. 31-33**

Pack	Cat. Nos.	Common accessories for flat and angled panels
10	0337 56	Port blanking modules Divisible 6 port blanking plate For sealing from 1 to 6 ports
1	0337 59	Cord management 2 cord management for use with new generation Quick-Fix Provides side cord management
1	0337 55	Specific accessories for flat panels Cassette for flat panels to be equipped Empty extractable cassette to be equipped with connectors Can accept 6 Cat. 5e to Cat. 8 connectors Extraction using push button making installation and maintenance easier
1	0337 95	High density cassette for flat panels to be equipped Empty extractable cassette to be equipped with connectors Can accept 12 Cat. 5e to Cat. 6A connectors Extraction using push button making installation and maintenance easier
1	0337 57	Blanking cassette Used to blank the panel
1	0337 58	Specific accessories for angled panels Angled panel cover For optimised management of the air flow inside the cabinet