

METAL CONSUMER UNITS



DOMESTIC CIRCUIT
PROTECTION



POWERED BY SPECIALISTS

 **legrand**[®]

BEYOND THE REGULATIONS

Legrand's new range of metal consumer units does much more than meet the requirements of Amendment 3 to the 17th Edition of the Wiring Regulations; it offers additional installer and user benefits that have been developed following extensive customer research.

BE SAFE NOT SEEN

With a range of surface, semi-flush and flush mounting versions to choose from, each consumer unit is finished in white RAL 9003 (low smoke and fumes approved paint), which blends in seamlessly with modern living designs.



Semi-flush mounted — Semi-flush units can be mounted into any type of wall which means they can be installed in the most convenient location in the property.



PART M COMPLIANT

Semi-flush and flush mounting units protrude less from the wall, making them the perfect solution when considering the requirements of Part M of the Building Regulations (access to and use of buildings) which states that the switches should be between 1.35m to 1.45m above the floor. At this height, the units are out of the reach of children yet accessible to adults, whether standing or sitting.



Surface mounted.



Flush mounted.

THERE'S MORE TO SAFETY THAN MEETS THE EYE

Rail positioned
for maximum
cabling space



CABLE CLAMP

Supplied with each unit, the cable clamp ensures incoming cables are secured to maintain a sound connection.



2 x EARTH LINKS

Each part of the metal unit is earthed using two earth links which connect the back box to the front plate, and the front plate to the lid.



LOCKABLE LATCH

All units are supplied with a lockable latch which ensures that the lid cannot be opened by an unauthorised person. (Padlock supplied separately).



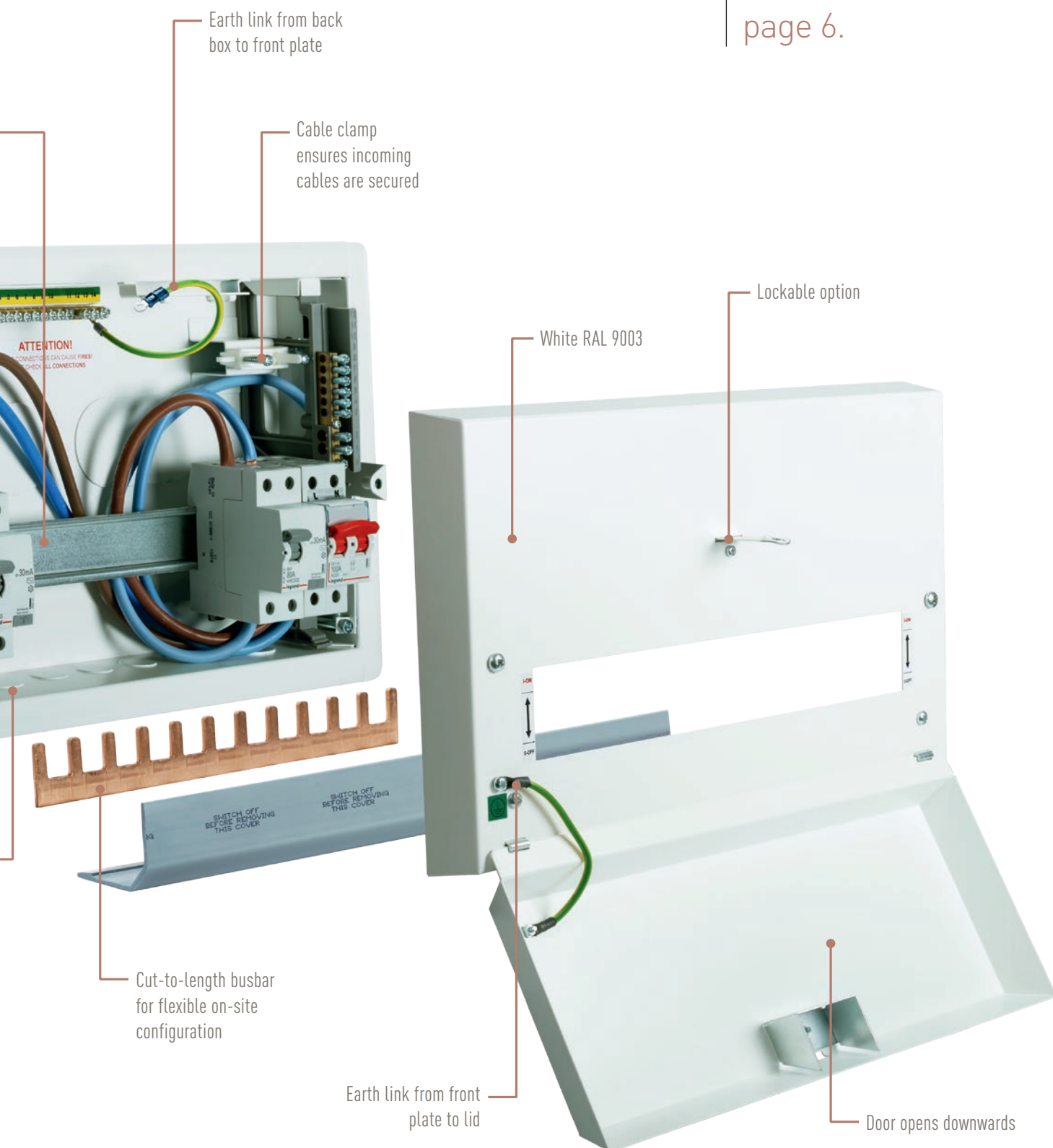
DRY LINING BACK BOX

Adjustable fixing lugs allow fast installation of semi-flush units. Simply turn the lug 90 degrees and tighten the screw to secure the unit into place.



Knockouts at bottom, top and
back for cabling ease

For MCBs,
RCDs and
RCBOs see
page 6.



METAL CONSUMER UNITS

Meet the requirements of BS 7671 : 2008 Amendment 3 Regulation 421.1.201, conforms to BS EN 61439-3
RAL 9003 - white colour
Pre-galvanised steel for strength and rigidity
Door opens downwards
Supplied with incoming meter tail clamp
Multiple knock-outs at the top, bottom and back
Neutral and earth terminals with screws in backed-off position
Cut-to-length busbar
Removable pan assembly
Supplied with blank plates for 5 modules and label kit

Dimensions **p. 7-9**

	SURFACE MOUNTING				
	CUSTOM BUILD	MAIN SWITCH INCOMER 63 A main switch	RCD INCOMER 80 A 30 mA RCD	DUAL RCD SPLIT LOAD 100 A main switch 2 x 80 A 30 mA RCD	HIGH INTEGRITY - DUAL RCD 100 A main switch 2 x 80 A 30 mA RCD
NO. OF AVAILABLE WAYS	Dimensions p. 7				
2 available ways	—	6076 00	—	—	—
4 available ways	6076 03	—	—	—	—
6 available ways	—	—	6076 01	—	—
8 available ways	6076 04	—	—	—	—
10 available ways	—	—	6076 02	6076 06	6076 08
12 available ways	6076 05	—	—	—	—
14 available ways	—	—	—	—	—
16 available ways	—	—	—	6076 07	6076 09

	SEMI-FLUSH MOUNTING	
	DUAL RCD SPLIT LOAD 100 A main switch 2 x 80 A 30 mA RCD	HIGH INTEGRITY - DUAL RCD 100 A main switch 2 x 80 A 30 mA RCD
NO. OF AVAILABLE WAYS	Dimensions p. 8	
10 available ways	6076 10	6076 12
16 available ways	6076 11	6076 13

	FLUSH MOUNTING	
	DUAL RCD SPLIT LOAD 100 A main switch 2 x 80 A 30 mA RCD	HIGH INTEGRITY - DUAL RCD 100 A main switch 2 x 80 A 30 mA RCD
NO. OF AVAILABLE WAYS	Dimensions p. 9	
10 available ways	6076 14	6076 16
16 available ways	6076 15	6076 17

RX³ residential MCBs and single module RCBOs **p. 6**



metal consumer units

NEW



6076 08



6076 10



6076 14



Dimensions p. 7-9

Meet the requirements of BS 7671 : 2008 Amendment 3 Regulation 421.1.201, conforms to BS EN 61439-3

RAL 9003 - white colour

Pre-galvanised steel for strength and rigidity

Door opens downwards

Supplied with incoming meter tail clamp

Multiple knock-outs at the top, bottom and back

Neutral and earth terminals with screws in backed-off position

Cut-to-length busbar

Removable pan assembly

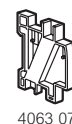
Supplied with blank plates for 5 modules and label kit

Pack	Cat. Nos.	Surface mounting
1	6076 06	Dual RCD split load
		16 module unit (8 + 2 ways available)
		With 100 A main switch and 2 x 80 A 30 mA RCD
1	6076 07	22 module unit (13 + 3 ways available)
		With 100 A main switch and 2 x 80 A 30 mA RCD
		High integrity - RCD split load with 2 unprotected ways
1	6076 08	16 module unit (8 + 2 ways available)
		With 100 A main switch and 2 x 80 A 30 mA RCD
1	6076 09	22 module unit (13 + 3 ways available)
		With 100 A main switch and 2 x 80 A 30 mA RCD
		With incomer
1	6076 00	4 modules available
		With 63 A main switch (2 ways available)
1	6076 01	8 modules available
		With 80 A 30 mA RCD (6 ways available)
1	6076 02	12 modules available
		With 80 A 30mA RCD (10 ways available)
		Custom build
		Allows several configurations and incomers (isolating switches, RCDs, RCBOs, see p. 6)
1	6076 03	4 modules available
1	6076 04	8 modules available
1	6076 05	12 modules available

Pack	Cat. Nos.	Semi-flush mounting
1	6076 10	Dual RCD split load
		16 module unit (8 + 2 ways available)
		With 100 A main switch and 2 x 80 A 30 mA RCD
1	6076 11	22 module unit (13 + 3 ways available)
		With 100 A main switch and 2 x 80 A 30 mA RCD
		High integrity - RCD split load with 2 unprotected ways
1	6076 12	16 module unit (8 + 2 ways available)
		With 100 A main switch and 2 x 80 A 30 mA RCD
1	6076 13	22 module unit (13 + 3 ways available)
		With 100 A main switch and 2 x 80 A 30 mA RCD

Pack	Cat. Nos.	Flush mounting
1	6076 14	Dual RCD split load
		16 module unit (8 + 2 ways available)
		With 100 A main switch and 2 x 80 A 30 mA RCD
1	6076 15	22 module unit (13 + 3 ways available)
		With 100 A main switch and 2 x 80 A 30 mA RCD
		High integrity - RCD split load with 2 unprotected ways
1	6076 16	16 module unit (8 + 2 ways available)
		With 100 A main switch and 2 x 80 A 30 mA RCD
1	6076 17	22 module unit (13 + 3 ways available)
		With 100 A main switch and 2 x 80 A 30 mA RCD

Pack	Cat. Nos.	Accessories
		Incomer or dual tariff kit
1	6075 19	Comprises : 1 flexible neutral (blue) lead 1 rigid neutral link
		Split load kit
1	6075 39	Comprises : 1 flexible live (brown) lead 1 flexible neutral (blue) lead 2 rigid neutral links
		Split load dual tariff kit
1	6075 49	Comprises : 1 flexible live (brown) lead 2 flexible neutral (blue) leads 2 rigid neutral links 1 neutral terminal
		Spare blank plate RAL 9003
20	0016 60	5 modules - white colour
		Spare blank plate RAL 9010
10	0016 64	18 module, separable by single or half modules
		Spare busbar
5	6075 99	21 prongs
		Spacing elements
10	4063 07	0-5 module
		Locking device for MCBs and RCDs
2	4063 03	Locking attachment for Ø 4 mm and Ø 6 mm padlocks
		Padlock
3	4063 13	Padlock Ø 4 mm
		Spare terminal block
1	8204 07	13 hole
		Self-adhesive label holder
10	0049 96	Width : 16 mm Width available for marking : 12 mm Length 530 mm (24 modules)



4063 07



4063 03



4063 13



0049 96



Pack	Cat. Nos.		RX³ residential MCBs - 6000 A	
	NEW		Breaking capacity : 6000 A to BS EN 60898-1	
	B curve	C curve	Single pole - 230/400 V~	
			Nominal rating (In)	Number of 17.5 mm modules
12	4197 49	4198 37	6 A	1
12	4197 50	4198 38	10 A	1
12	4197 52	4198 40	16 A	1
12	4197 53	4198 41	20 A	1
12	4197 54	4198 42	25 A	1
12	4197 55	4198 43	32 A	1
12	4197 56	4198 44	40 A	1
12	4197 57	4198 45	50 A	1
12	4197 58	4198 46	63 A	1

B	C	Cat. Nos.		DX³ MCBs - 6000 A	
		B curve	C curve	Breaking capacity : 6000 A to BS EN 60898-1	
				Single pole - 230/400 V~	
				Nominal rating (In)	Number of 17.5 mm modules
1	1	4074 29	4076 66	6 A	1
10	10	4074 30	4076 68	10 A	1
10	10	4074 32	4076 70	16 A	1
1	10	4074 33	4076 71	20 A	1
1	10	4074 35	4076 73	32 A	1
1	1	4074 36	4076 74	40 A	1
1	1	4074 37	4076 75	50 A	1
1	1	4074 38	4076 76	63 A	1

		RCBOs (combined MCB/RCD) - Single module	
		Breaking capacity : 10 kA to BS EN 61009-1	
		RCD type AC conform to BS EN 61009-1	
		Terminal capacity : rigid conductor 35 mm ²	
		flexible conductor 25 mm ²	
		Single pole and neutral - 240 V~	
	B curve	Nominal rating (In)	Number of 17.5 mm modules
1	6064 16	6 A	1
1	6064 17	10 A	1
1	6064 18	16 A	1
1	6064 19	20 A	1
1	6064 20	32 A	1
1	6064 21	40 A	1
1	6064 28	50 A	1

Pack	Cat. Nos.		RX³ residual current devices (RCDs)	
			Conform to BS EN 61008-1	
			Terminal capacity : rigid conductor 35 mm ²	
			flexible conductor 25 mm ²	
			Double pole 230 V~	
	Type AC	Nominal rating (In)	Number of 17.5 mm modules	
			30 mA	
1	4020 24	25 A	2	
1	4020 25	40 A	2	
1	4020 26	63 A	2	
1	4020 27	80 A	2	
			100 mA	
1	4020 28	25 A	2	
1	4020 29	40 A	2	
1	4020 30	63 A	2	

		DX³ isolating switches	
		Conform to BS EN 60947-3, BS EN 60669-1	
		Usage : AC 22 according to BS EN 60947-3	
		Red handle	
		Double break contacts, padlockable	
		50 mm ² capacity shielded terminals	
			Number of 17.5 mm modules
5	4064 53	63 A double pole	2
5	4064 55	100 A double pole	2

		CX³ contactor with 230 V~ coil	
		Conforms to BS EN 61095	
		Double pole (L + N) 250 V~	
		230 V~ coil circuit	
	I max.		Type of contact
1	4125 44	25 A	2 N/O
		For other contactors, see current Industrial and Power Protection catalogue	

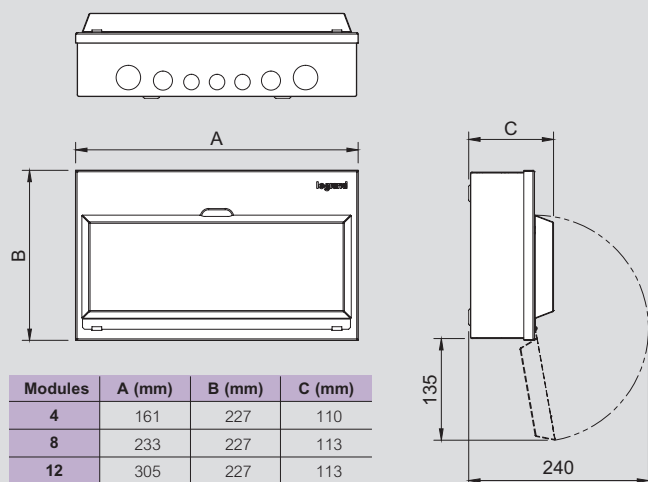
		Bell transformers	
		Conform to BS EN 61558-2-8	
		Supplied with label holder	
		Protected against overloads and short circuits	
		Power to 8 V-12 V or 24 V access control devices	
		such as bells and chimes	
		Possibility for supply busbars to run through (Cat. Nos. 4130 90/91)	
	Secondary (V)	Rating (A)	Power (VA)
1	4130 90	230 V / 8 V	0.5 A
1	4130 91	230 V / 12 V - 8 V	0.66/1 A
1	4130 93	230 V / 24 V - 12 V	1/1.5 A
		Number of 17.5 mm modules	
		2	
		2	
		4	

metal consumer units

surface mounting

Surface mounting

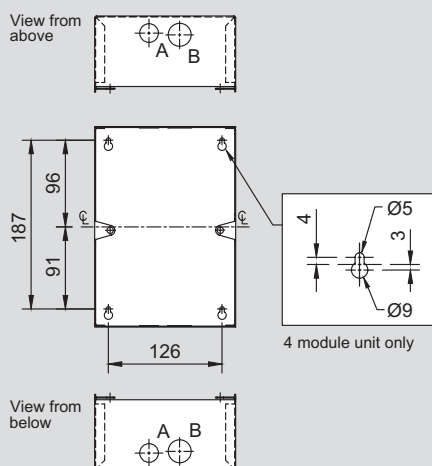
Overall dimensions (mm)



Modules	A (mm)	B (mm)	C (mm)
4	161	227	110
8	233	227	113
12	305	227	113
16	377	227	113
22	485	227	113

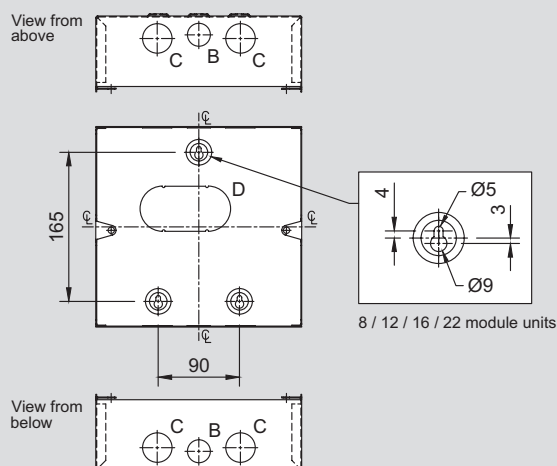
4 module unit

Back box fixing centres and cable entries (mm)



8 module unit

Back box fixing centres and cable entries (mm)

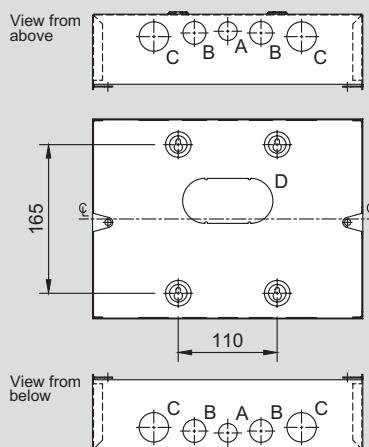


Modules	Number of cable entries			
	A Ø20 mm	B Ø25 mm	C Ø32 mm	D 100 x 50 mm
4	2	2	—	—
8	—	2	4	1

All dimensions (mm) are nominal

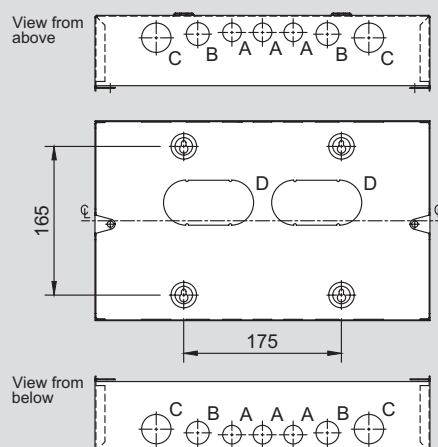
12 module unit

Back box fixing centres and cable entries (mm)



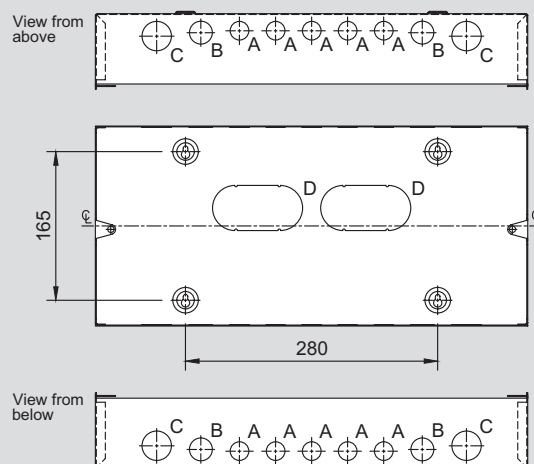
16 module unit

Back box fixing centres and cable entries (mm)



22 module unit

Back box fixing centres and cable entries (mm)



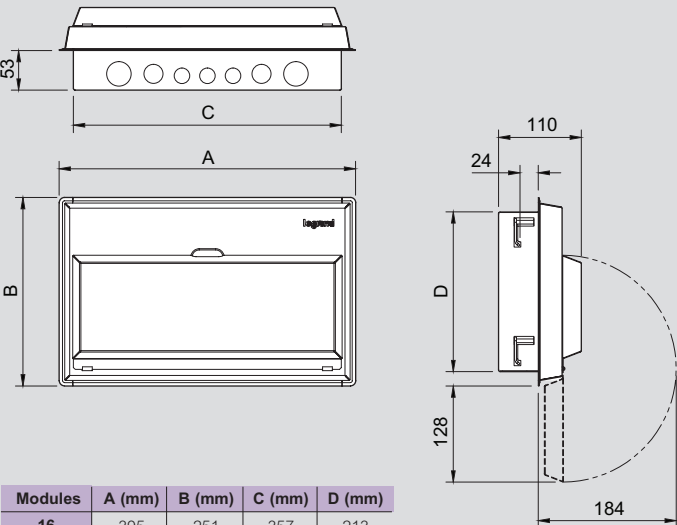
Modules	Number of cable entries			
	A Ø20 mm	B Ø25 mm	C Ø32 mm	D 100 x 50 mm
12	2	4	4	1
16	6	4	4	2
22	10	4	4	2

metal consumer units

semi-flush mounting

Semi-flush mounting

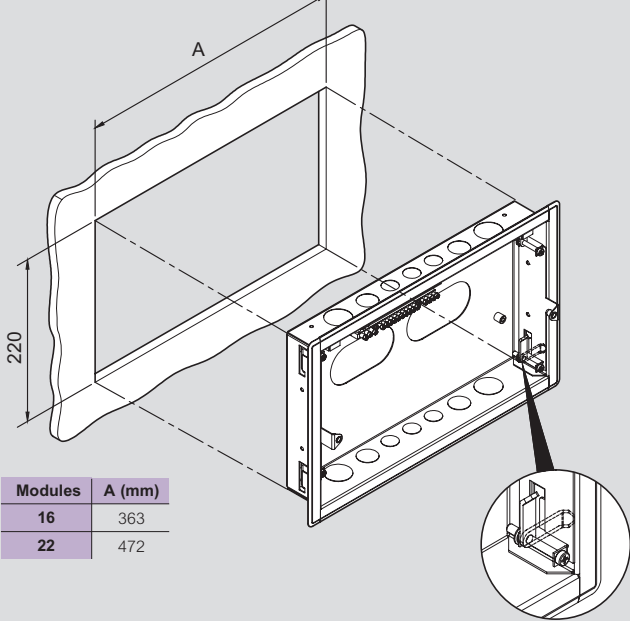
Overall dimensions (mm)



Modules	A (mm)	B (mm)	C (mm)	D (mm)
16	395	251	357	213
22	503	251	465	213

16 and 22 module unit

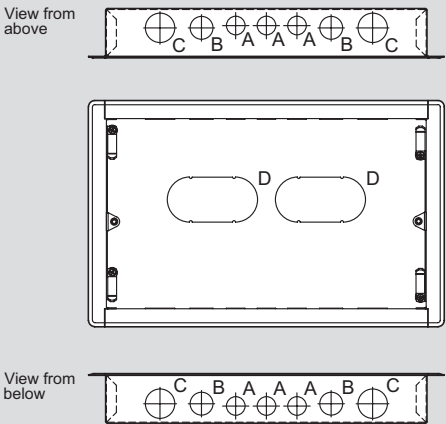
Back box fixing cutouts (mm)



Modules	A (mm)
16	363
22	472

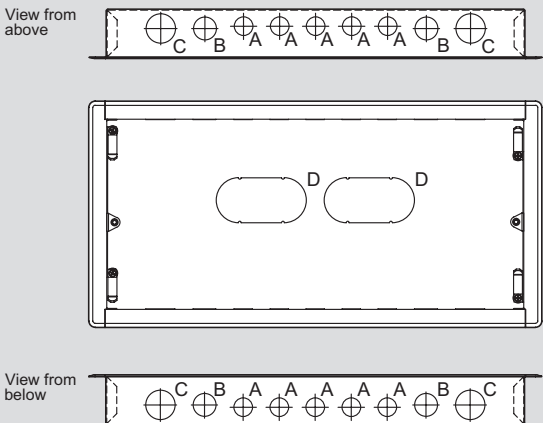
16 module unit

Back box cable entries (mm)



22 module unit

Back box cable entries (mm)



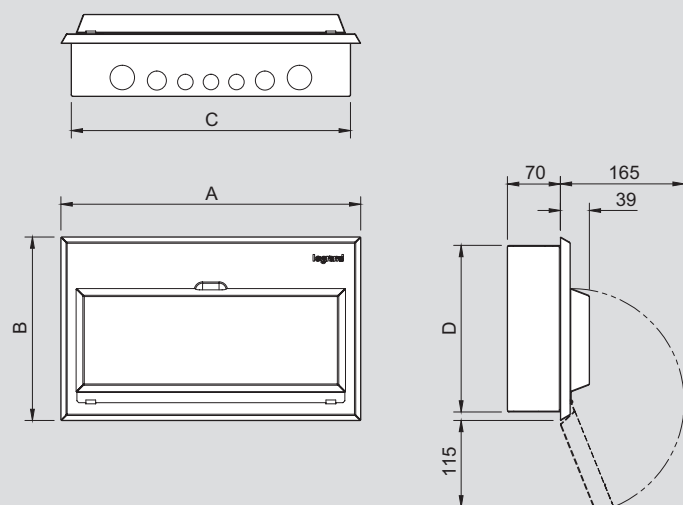
Modules	Number of cable entries			
	A Ø20 mm	B Ø25 mm	C Ø32 mm	D 100 x 50 mm
16	6	4	4	2
22	10	4	4	2

metal consumer units

flush mounting

Flush mounting

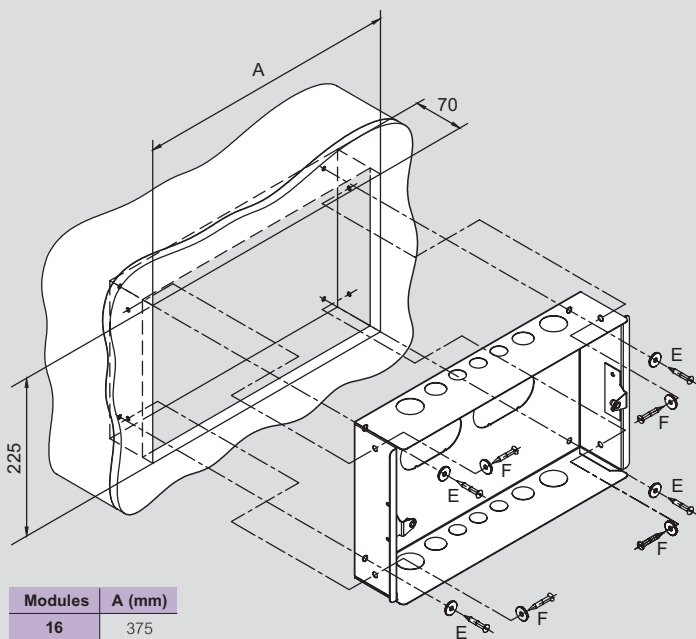
Overall dimensions (mm)



Modules	A (mm)	B (mm)	C (mm)	D (mm)
16	399	244	372	222
22	507	244	480	222

16 and 22 module unit

Back box fixing cutouts or aperture sizes (mm)



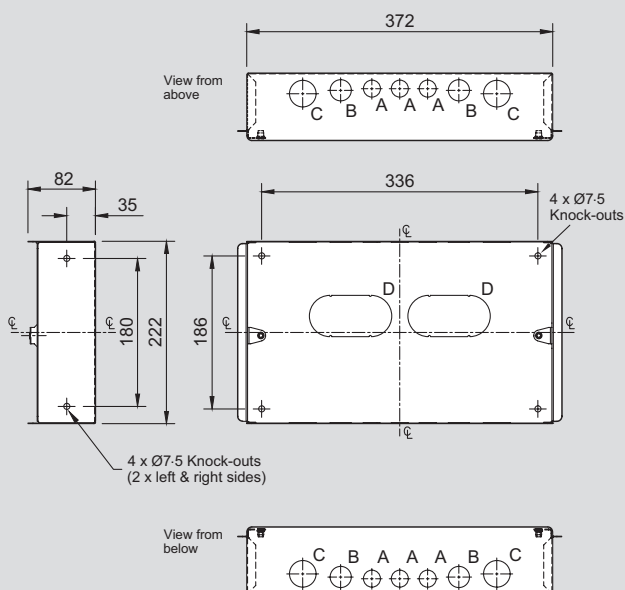
Modules	A (mm)
16	375
22	483

E = Base fixing method
F = Side fixing method

Screw fixings not supplied
Use suitable fixings with large head or penny washers

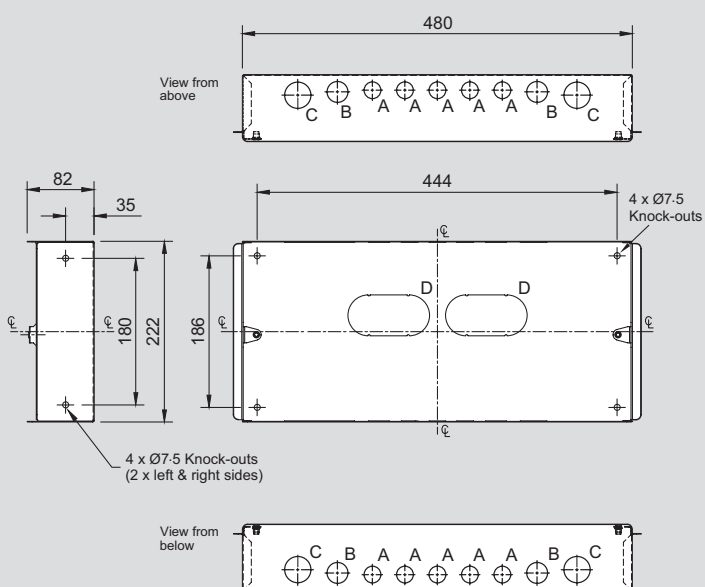
16 module unit

Cable entries and fixings (mm)



22 module unit

Cable entries and fixings (mm)



Modules	Number of cable entries			
	A Ø20 mm	B Ø25 mm	C Ø32 mm	D 100 x 50 mm
16	6	4	4	2
22	10	4	4	2

All dimensions (mm) are nominal

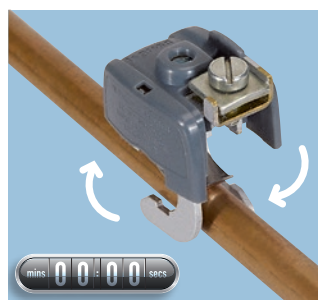


FAST, RELIABLE CONNECTIONS

For commercial and residential applications in both new and existing installations, Tenby Rapid Clamp Ultra creates earthing connections with a simple fixing method that makes fitting them in hard to reach areas easier than ever.

The unique 'twist' fixing method is up to 5 times faster when compared with traditional clamps.

So for mains incomer pipes, boiler replacement, special locations or supplementary bonding in pre-17th Edition installations, earthing is a whole lot easier with Tenby!



Tenby® Rapid Clamp Ultra

earth clamps



0343 85



0343 86



0343 87

Conform to BS 951 : 2009

Available in three sizes

Suitable for dry, non corrosive atmospheres and corrosive or humid conditions

Resistance of incandescent wire 960 °C

Resistivity of 0.4 mΩ

Colour : grey

Polyamide

Safe, intuitive 1/4 turn mounting ensuring an excellent, lasting equipotential link

Pack	Cat. Nos.	Earth clamps for all conditions			
		Terminal size : A – D (2.5 – 10 mm ²) Maximum earth conductor 1 x 10 mm ²			
		Pipe Ø		Connection cross-section	
		Ø min. (mm)	Ø max. (mm)	min. (mm ²)	max. (mm ²)
20	0343 85	12	16	2.5	16
10	0343 86	18	22	2.5	16
10	0343 87	28	32	2.5	16

Tenby® Rapid Clamp Ultra

earth clamps



EC14



EC15/2



EC16/3

Conform to BS 951 : 2009

Available in three types :

Red (EC14) for dry, non corrosive atmospheres

Blue (EC15) for corrosive or humid conditions

Green (EC16) for corrosive or humid conditions, large earth conductors

5 standard band lengths to suit pipe Ø of 12-32 mm, 32-50 mm,

50-75 mm, up to 100 mm and up to 150 mm

Pack	Cat. Nos.	Earth clamps for dry conditions	
		Terminal size : A – D (2.5 – 10 mm ²) Maximum earth conductor 1 x 10 mm ²	
20	EC14	For pipe Ø 12 – 32 mm	
20	EC14/2	For pipe Ø 32 – 50 mm	
20	EC14/3	For pipe Ø 50 – 75 mm	

Pack	Cat. Nos.	Earth clamps for all conditions	
		Terminal size : A – D (2.5 – 10 mm ²) Maximum earth conductor 1 x 10 mm ²	
20	EC15	For pipe Ø 12 – 32 mm	
20	EC15/2	For pipe Ø 32 – 50 mm	
20	EC15/3	For pipe Ø 50 – 75 mm	
20	EC15/4	For pipe Ø up to 100 mm	
20	EC15/6	For pipe Ø up to 150 mm	
		Terminal size : A – E (2.5 – 16 mm ²) Maximum earth conductor 2 x 16 mm ²	
20	EC16	For pipe Ø 12 – 32 mm	
20	EC16/2	For pipe Ø 32 – 50 mm	
20	EC16/3	For pipe Ø 50 – 75 mm	

Cross-reference table

CONSUMER UNITS, MCBS AND ACCESSORIES			
Range	Description	Old Cat. No.	Cat. No.
Accessory	Spare Blank Plate	6075 89	0016 60
Accessory	Lockable brackets For 16 Module Units - Semi-Flush Mounting	8204 71	–
Accessory	Lockable brackets For 22 Module Units - Semi-Flush Mounting	8204 72	–
Accessory	Lockable brackets For 16 Module Units - Surface Mounting	8218 57	–
Accessory	Lockable brackets For 22 Module Units - Surface Mounting	8218 58	–
Consumer Unit	16 Module Custom Build Consumer Unit - Surface Mounting	6065 50	–
Consumer Unit	22 Module Custom Build Consumer Unit - Surface Mounting	6065 51	–
Consumer Unit	16 Module Dual RCD Split Load Consumer Unit - Surface Mounting	6065 57	6076 06
Consumer Unit	22 Module Dual RCD Split Load Consumer Unit - Surface Mounting	6065 58	6076 07
Consumer Unit	8 Module 100 A MS Consumer Unit - Surface Mounting	6065 59	–
Consumer Unit	12 Module 100 A MS Consumer Unit - Surface Mounting	6065 60	–
Consumer Unit	8 Module Custom Build Consumer Unit - Surface Mounting	6065 61	6076 04
Consumer Unit	12 Module Custom Build Consumer Unit - Surface Mounting	6065 62	6076 05
Consumer Unit	16 Module Dual RCD Split Load Consumer Unit - Surface Mounting	6075 57	6076 06
Consumer Unit	22 Module Dual RCD Split Load Consumer Unit - Surface Mounting	6075 58	6076 07
Consumer Unit	8 Module 100 A MS Consumer Unit - Surface Mounting	6075 59	–
Consumer Unit	12 Module 100 A MS Consumer Unit - Surface Mounting	6075 60	–
Consumer Unit	8 Module Custom Build Consumer Unit - Surface Mounting	6075 61	6076 04
Consumer Unit	12 Module Custom Build Consumer Unit - Surface Mounting	6075 62	6076 05
Consumer Unit	4 Module 63 A MS Consumer Unit - Surface Mounting	6075 63	6076 00
Consumer Unit	8 Module 80 A 30 mA RCD Consumer Unit - Surface Mounting	6075 64	6076 01
Consumer Unit	12 Module 80 A 30 mA RCD Consumer Unit - Surface Mounting	6075 65	6076 02
Consumer Unit	16 Module 100 A MS Consumer Unit - Surface Mounting	6075 66	–
Consumer Unit	22 Module 100A MS Consumer Unit - Surface Mounting	6075 67	–
Consumer Unit	4 Module Custom Build Consumer Unit - Surface Mounting	6075 68	6076 03
Consumer Unit	16 Module High Integrity RCD Split Load Consumer Unit - Surface Mounting	6075 70	6076 08
Consumer Unit	22 Module High Integrity RCD Split Load Consumer Unit - Surface Mounting	6075 71	6076 09
Consumer Unit	22 Module Dual RCD Split Load Consumer Unit - Semi-Flush Mounting	8204 09	6076 11
Consumer Unit	16 Module Dual RCD Split Load Consumer Unit - Semi-Flush Mounting	8204 10	6076 10
Consumer Unit	16 Module High Integrity RCD Split Load Consumer Unit - Semi-Flush Mounting	NA	6076 12
Consumer Unit	22 Module High Integrity RCD Split Load Consumer Unit - Semi-Flush Mounting	NA	6076 13
Consumer Unit	16 Module Dual RCD Split Load Consumer Unit - Flush Mounting	NA	6076 14
Consumer Unit	22 Module Dual RCD Split Load Consumer Unit - Flush Mounting	NA	6076 15
Consumer Unit	16 Module High Integrity RCD Split Load Consumer Unit - Flush Mounting	NA	6076 16
Consumer Unit	22 Module High Integrity RCD Split Load Consumer Unit - Flush Mounting	NA	6076 17
MCB RX ³	6 A SP Type B 6 kA MCB	4022 70	4197 49
MCB RX ³	10 A SP Type B 6 kA MCB	4022 71	4197 50
MCB RX ³	16 A SP Type B 6 kA MCB	4022 72	4197 52
MCB RX ³	20 A SP Type B 6 kA MCB	4022 73	4197 53
MCB RX ³	25 A SP Type B 6 kA MCB	4022 74	4197 54
MCB RX ³	32 A SP Type B 6 kA MCB	4022 75	4197 55
MCB RX ³	40 A SP Type B 6 kA MCB	4022 76	4197 56
MCB RX ³	50 A SP Type B 6 kA MCB	4022 77	4197 57
MCB RX ³	63 A SP Type B 6 kA MCB	4022 78	4197 58
MCB RX ³	6 A SP Type C 6 kA MCB	4023 10	4198 37
MCB RX ³	10 A SP Type C 6 kA MCB	4023 11	4198 38
MCB RX ³	16 A SP Type C 6 kA MCB	4023 13	4198 40
MCB RX ³	20 A SP Type C 6 kA MCB	4023 14	4198 41
MCB RX ³	25 A SP Type C 6 kA MCB	4023 15	4198 42
MCB RX ³	32 A SP Type C 6 kA MCB	4023 16	4198 43
MCB RX ³	40 A SP Type C 6 kA MCB	4023 17	4198 44
MCB RX ³	50 A SP Type C 6 kA MCB	4023 18	4198 45
MCB RX ³	63 A SP Type C 6 kA MCB	4023 19	4198 46

Contact details

United Kingdom

Great King Street North,
Birmingham, B19 2LF

Customer Services:

Tel: +44 (0) 345 605 4333 Fax: +44 (0) 345 605 4334

E-mail: legrand.sales@legrand.co.uk

Quotations and Technical Support:

Tel: +44 (0) 370 608 9020 Fax: +44 (0) 370 608 9021

E-mail: uk-wdsales@legrand.co.uk

Republic of Ireland:

Tel: 01 295 9673 Fax: 01 295 4671

E-mail: legrand.sales@legrand.co.uk



FOLLOW
US AT

@ www.legrand.co.uk
www.legrand.ie

 www.youtube.com/legrandtvuk

 www.twitter.com/legranduk

 www.voltimum.co.uk
www.voltimum.ie



Head office (UK and Ireland):

Legrand Electric Limited
Great King Street North, Birmingham, B19 2LF
Tel: +44 (0) 370 608 9000 Fax: +44 (0) 370 608 9004
Website: www.legrand.co.uk

