



DESKING SOLUTIONS

Convenient and neat access to power and data.



DESKING SOLUTIONS

RANGE INTRODUCTION

MK's range of Desking Solutions offer a comprehensive range of pre-configured above the desk, in desk and under desk modules, providing convenient access to power and data services to the end user, where it is needed.

Delivering the final link in the chain of the power distribution circuit, MK's Deskpod under desk range are compatible with the Interact Underfloor Power System, Cablelink Plus Floorboxes and Grommets.

The range incorporates in-built product design features to address the increasing and varied demands of individual requirements.

HOW TO SPECIFY

A range of stylishly designed desk modules to provide convenient access to power and data services with provision for data modules, RCD and RCBO protection. Product to be manufactured from anodised aluminium and polycarbonate to provide, chemical, colour fade, impact resistance and retardant properties.

FEATURES & BENEFITS

ROBUST AND STYLISH DESIGN

Distinguished simple design manufactured from anodised aluminium and polycarbonate, also offering chemical, colour fade, impact resistance and flame retardance

AVAILABLE WITH DUAL USB CHARGING MODULE

Ideal to meet the growing demand to charge mobile devices such as tablets, smart phones and cameras

COMPLIES WITH WIRING REGULATIONS

Provision of RCD protections supports IET 18th Edition Wiring Regulations

5 YEAR GUARANTEE

DESKING SOLUTIONS

Above the Desk



MK's Above The Desk modules provide easy access to power and data to the desk-top. Featuring a stylish and ergonomic design, integral 'C' clamp for fast installation and configurable 'tunnel' for data connections it enhances the functionality of the workspace and provides the ideal solution for any workstation.

AVAILABLE WITH OR WITHOUT USB CHARGING MODULE

CONFIGURABLE 'TUNNEL' FOR VOICE & DATA CONNECTIONS



Above the Desk Configurations

| | Part Number | Description |
|---|-------------------|---|
|  | DPA2010USB | 2 x 13A Sockets Dual USB 1 x Blank Plate 1 x LJU6C Data Plate (2 Apertures) Pre-wired with 2M power lead with BS1363 plug |
|  | DPA3010 | 3 x 13A Sockets 1 x Blank Plate 1 x LJU6C Data Plate (2 Apertures) Pre-wired with 2M power lead with BS1363 plug |






DESKING SOLUTIONS

In the Desk

MK's In the Desk modules provide easy access to power and data to the desk-top. Featuring a discrete design, soft close lid and configurable 'tunnel' for data connections it enhances the functionality of the workspace and provides the ideal solution for shared workstations and meeting room tables.



In the Desk Configurations

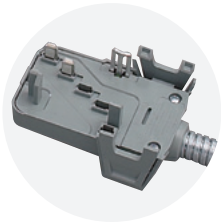
| | Part Number | Description |
|---|-------------------|--|
|  | DPI2010USB | 2 x 13A Sockets Dual USB 1 x Blank Plate 1 x LJU6C Data Plate (2 Apertures) |
|  | DPI3010 | 3 x 13A Sockets 1 x Blank Plate 1 x LJU6C Data Plate (2 Apertures) |
|  | DPC1120 | Power lead 1.5mm ² , 13A plug to 3 Pole (female) connector 2M |
| | DPC1130 | Power lead 1.5mm ² , 13A plug to 3 Pole (female) connector 3M |
| | DPC1150 | Power lead 1.5mm ² , 13A plug to 3 Pole (female) connector 5M |



DESKPOD™

Under the Desk

MK's Under the Desk modules provide easy access to power and data for the workstation. Featuring a stylish anodised aluminium design, and a range of pre-configured options including circuit protection options, USB charging and pre-wired tap offs, DeskPod is a versatile solution for any workplace.



TAP-OFFS

Pre-wired to tap-offs available for quick installation – see page 8



8" GROMMET

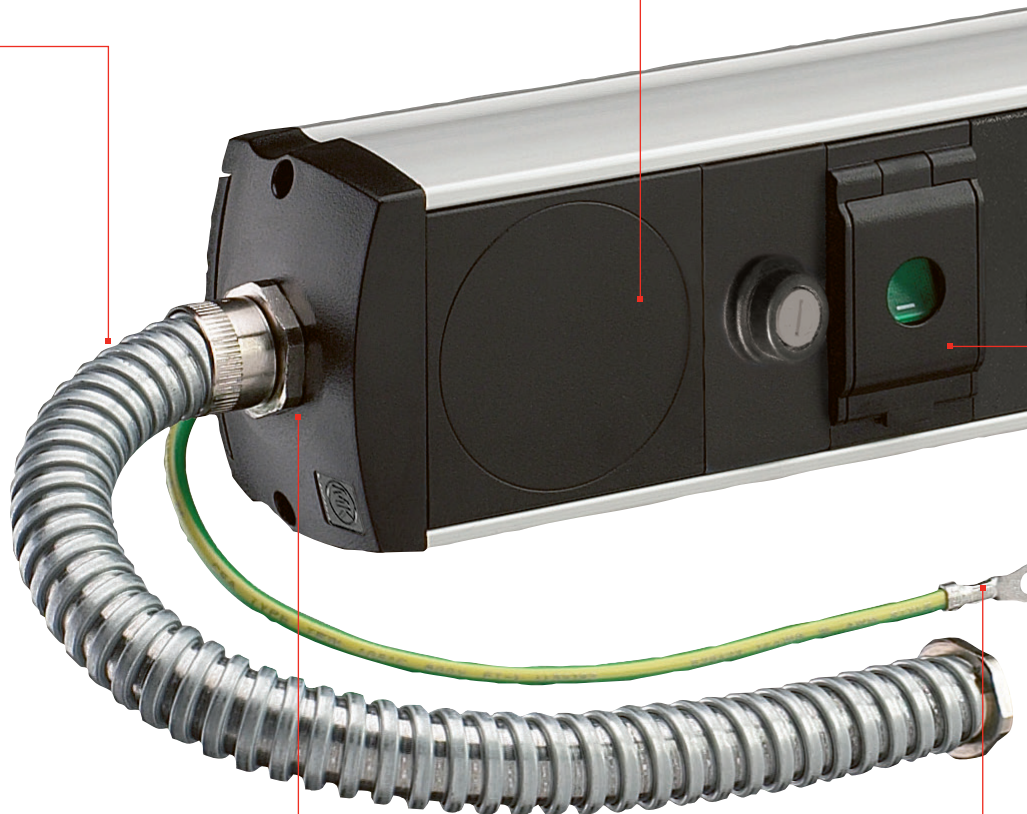
Provide access where DeskPods are contained within the floor void – visit mkelectric.co.uk

PROTECTION

- Choice of fuse or RCBO

INCOMING SUPPLY

- Conduit entry available for hard wiring tap-offs
- Flex entry available for hard wiring to a BS1363 plug
- 3 and 4 pole Wago or Wieland connectors



WIRING CONFIGURATION

- Range includes Standard, Clean Earth or High Protective conductor currents compliant products.

EXTERNAL EARTH LEAD

- All power units include an earth lead to allow bonding to any metalwork, e.g. desk installation



ANODISED ALUMINIUM EXTRUDED 'POD'

- Styled and finished to be aesthetically pleasing
- Robust construction ensures durability whilst in use



UNFUSED

SOCKET OUTLETS

- Choice of four or six socket outlets

INTEGRAL FIXING BRACKET

- In-built 2 position bracket to allow fast and simple mounting of the unit

SWITCH

- Double Pole Neon Switch available
- Neon Indicator to provide user with visible indication of power supply
- Positive Switch Action – audible indication of switching
- Switch Cover (with viewing cut out) – protects the unit from inadvertent switching
- Double Pole Switch – all contacts are disconnected for added user safety

DESKPOD™

Data DeskPods

| Part no. | N° of modules | EURO | LJU6C |
|----------|---------------|------|-------|
| DPP2000 | 4 | ✓ | - |
| DPP2100 | 4 | - | ✓ |



Pre-configured Power DeskPods

The modules are positioned within the DeskPod left to right as they appear in the table below.

| Part no. | Incoming Supply | Circuit Protection (max current rating) | Neon Switch | Dual USB Ports | N° of Sockets | End Cap |
|---------------|--|--|----------------|-------------------|------------------|------------------|
| DPP4010 | None | 12.5A Unit Fuse | Yes | - | 4 | Blank |
| DPP4011WGRY-5 | Pre-wired to Tap-Off (UT53201 GREY, 4mm ² 5m) | 16A RCBO | - | - | 4 | Wieland GST (3P) |
| DPP4012WGRN-5 | Pre-wired to Tap-Off (UT53202 GREEN, 4mm ² 5m) | 12.5A Unit Fuse | Yes | - | 4 | Wieland GST (3P) |
| DPP4013WGRN-5 | Pre-wired to Tap-Off (UT53202 GREEN, 4mm ² 5m) | 16A RCBO | - | - | 4 | Wieland GST (3P) |
| DPP4015 | None | 12.5A Unit Fuse | Yes | Yes | 4 | Blank |
| DPP4016 | Wieland GST (3P) | 12.5A Unit Fuse | Yes | Yes | 4 | Blank |
| DPP4019 | Pre-wired to Tap-Off (UT33202 GREEN, 4mm ² 3m) | 16A RCBO | Yes | - | 4 | Blank |
| DPP4110 | None | 10A RCBO | - | - | 4 | Blank |
| DPP4110WRED | Pre-wired to Tap-Off (UT33204 CE RED, 4mm ² 3m) | 10A RCBO | - | - | 4 | Blank |
| DPP4120 | None | 20A RCBO | - | - | 4 | Blank |
| DPP4120WGRY | Pre-wired to Tap-Off (UT33201 GREY, 4mm ² 3m) | 20A RCBO | - | - | 4 | Blank |
| DPP4120WGRY-5 | Pre-wired to Tap-Off (UT53201 GREY, 4mm ² 5m) | 20A RCBO | - | - | 4 | Blank |
| DPP4120WRED | Pre-wired to Tap-Off (UT33204 CE RED, 4mm ² 3m) | 20A RCBO | - | - | 4 | Blank |
| DPP4120WRED-5 | Pre-wired to Tap-Off (UT53204 CE RED, 4mm ² 5m) | 20A RCBO | - | - | 4 | Blank |
| DPP6010 | None | 12.5A Unit Fuse | Yes | - | 6 | Blank |
| DPP6011 | Pre-wired to Tap-Off (UT53201 GREY, 4mm ² 5m) | 16A RCBO | - | - | 6 | Wieland GST (3P) |
| DPP6012WGRY-5 | Pre-wired to Tap-Off (UT53201 GREY, 4mm ² 5m) | 10A RCBO | - | - | 6 | Wieland GST (3P) |
| DPP6013WGRY-5 | Pre-wired to Tap-Off (UT53201 GREY, 4mm ² 5m) | 20A RCBO | - | - | 6 | Blank |
| DPP6015 | None | 12.5A Unit Fuse | Yes | Yes | 6 | Blank |
| DPP6016 | Wieland GST (3P) | 12.5A Unit Fuse | Yes | Yes | 6 | Blank |
| DPP6110 | None | 10A RCBO | - | - | 6 | Blank |
| DPP6110WGRY | Pre-wired to Tap-Off (UT33201 GREY, 4mm ² 3m) | 10A RCBO | - | - | 6 | Blank |
| DPP6110WGRY-5 | Pre-wired to Tap-Off (UT53201 GREY, 4mm ² 5m) | 10A RCBO | - | - | 6 | Blank |
| DPP6110WRED | Pre-wired to Tap-Off (UT33204 CE RED, 4mm ² 3m) | 10A RCBO | - | - | 6 | Blank |
| DPP6110WRED-5 | Pre-wired to Tap-Off (UT53204 CE RED, 4mm ² 5m) | 10A RCBO | - | - | 6 | Blank |
| DPP6120WGRY | Pre-wired to Tap-Off (UT33201 GREY, 4mm ² 3m) | 20A RCBO | - | - | 6 | Blank |
| DPP6120WGRY-5 | Pre-wired to Tap-Off (UT53201 GREY, 4mm ² 5m) | 20A RCBO | - | - | 6 | Blank |
| DPP6120WRED | Pre-wired to Tap-Off (UT33204 CE RED, 4mm ² 3m) | 20A RCBO | - | - | 6 | Blank |
| DPP6120WRED-5 | Pre-wired to Tap-Off (UT53204 CE RED, 4mm ² 5m) | 20A RCBO | - | - | 6 | Blank |

Please visit mkelectric.co.uk for more information on taps and Interact Underfloor Power

Power Leads and Interlink Cables

| | Part Number | Description |
|---|------------------------------|--|
|  | Wieland GST Connector | |
| | DPC1120 | Power lead 1.5mm ² , 13A plug to 3 Pole (female) connector 2 metres |
| | DPC1130 | Power lead 1.5mm ² , 13A plug to 3 Pole (female) connector 3 metres |
| | DPC1150 | Power lead 1.5mm ² , 13A plug to 3 Pole (female) connector 5 metres |
|  | DPC2205 | Interlink cable (1.5mm ² ,) 3 Pole connector 0.5 metre |
| | DPC2210 | Interlink cable (1.5mm ² ,) 3 Pole connector 1 metre |

MK Electric

The Arnold Centre,
Paycocke Road,
Basildon, Essex,
SS14 3EA, UK

Customer Service Tel +44 (0) 1268 563265
Customer Service Fax +44 (0) 1268 563473
E-mail mkorderenquiries@honeywell.com

www.mkelectric.co.uk

Technical

Tech Helpline Tel 01268 563720
Tech E-mail mk.technical@honeywell.com

Ireland

Sales Tel 01 4296530
Sales Fax 01 4296501
E-mail mkorders@honeywell.com

UKMK468-0620-EN
© 2020 Honeywell International Inc.

