

CR2206/PBG

6 & 8 GANG SURFACE BOX
WITHOUT KNOCKOUTS



Instinct™
WIRING ACCESSORIES

CONSTRUCTION

| | |
|------------------|------------------|
| Product Category | Wiring Accessory |
| Product Group | Power & Control |
| Product Type | Grid System |
| Shape | Not Applicable |
| Material | Mild Steel |
| Finish | Powder Coated |
| Mounting Type | Surface |

POWER

| | |
|---------------------------|----------------|
| Current | Not Applicable |
| Current Type | Not Applicable |
| Frequency | 50Hz |
| Input Voltage | 250V |
| Switched Poles | Not Applicable |
| Number of Rocker Switches | 0 |
| Number of Ways | Not Applicable |
| Fuse Rating | Not Applicable |

AESTHETICS

| | |
|-------------------------------|---|
| Plate Gang / Module Size | 6/8 Gang |
| Plate Colour | Birch Grey |
| Rocker Colour | Not Applicable |
| Light Reflectance Value (LRV) | 29 |
| Printing Text/Type | Not Applicable |
| Status Indicator | N |
| Switched Outlets | N |
| Part M Compliance | Y |
| Anti Microbial Properties | N |
| Key Features & Benefits | Coated in Low Smoke & Fume (LSF) Powder Coat Finish as standard Robust & Reliable |

TERMINAL

| | |
|---|--|
| L & N Terminal Capacity as per BS Standard | Not Applicable |
| Earth Terminal Capacity as per BS Standard | 4 x 1.0mm ² , 3 x 1.5mm ² , 1 x 2.5mm ² |
| Number of Earth Terminals | 1 |
| Cable Strip Length | Not Applicable |
| Screwdriver Type Required | Not Applicable |
| Torque requirement as per BS Standard L&N | Not Applicable |
| Torque requirement as per BS Standard Earth | 1.2Nm |

LOCATION

| | |
|---|----------------|
| Max Ambient Operating Temp as per BS Req. | Not Applicable |
| Min Ambient Operating Temp as per BS Req. | Not Applicable |
| Max Altitude as per BS Requirement | 2000m |
| IP Rating | Not Applicable |

DIMENSIONAL / FIXING

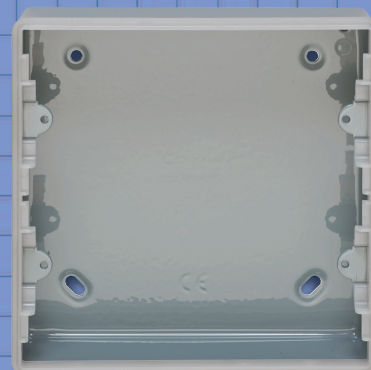
| | |
|-------------------------------|----------------|
| Height | 146mm |
| Width | 146mm |
| Depth | 40mm |
| Depth Interior only | Not Applicable |
| Gross Weight | 0.396kg |
| Minimum Back Box Depth | Not Applicable |
| Suggested Back Box Depth | Not Applicable |
| Fixing Centres | 132mm |
| Minimum Access Top | 100cm |
| Minimum Access Bottom | 100cm |
| Minimum Access Left | 100cm |
| Minimum Access Right | 100cm |
| Minimum Access Front | 100cm |
| Minimum Access Rear | 100cm |
| Flush Mounting Metal Box | Not Applicable |
| Flush Mounting Dry Lining Box | Not Applicable |
| Surface Mounting Box | Not Applicable |

PACKAGING

| | |
|------------------|---|
| Inner Carton Qty | 1 |
| Customer MOQ | 1 |

SUSTAINABILITY

URL to technology list <https://www.crabtreecommercial.co.uk/>



Electrium Sales Limited
A Siemens Company
Tel: +44 (0) 1543 438310
Fax: +44 (0) 1543 000000
Email: crabtree.technical@electrium.co.uk
www.electrium.co.uk

Although every effort has been made to ensure accuracy in the compilation of the technical detail within this publication, specifications and performance data are constantly changing. Latest details can be obtained from Crabtree.



Crabtree