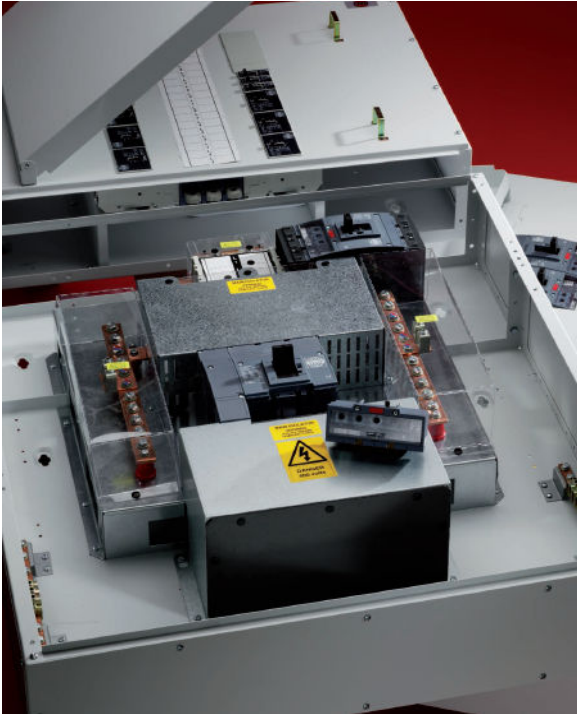


Technical Information
NH250 MCCB Panel Board (630A Incomer)

Overview:
System

- Incoming Rating 630A
- Maximum Outgoing Circuit 250A
- Integral Metering Options
- Degree of Protection: IP3X
- Form 3b Type 2 to BS EN 61439-2
- Designed and Manufactured in the UK

Devices

- Wylex J & G-Frame MCCBs
- Siemens technology
- 15A – 250A Current Rating
- SP & TP variants

Features:

- User Defined Incoming Options
 - 400A & 630A TP & 4P TM MCCB (2 x 150mm²)
 - 400 & 630A TP & 4P Switch Disconnecter (2 x 150mm²)
- Busbar Ratings
 - 630A @ 50kA for 1s
- Lightning & Surge Arrestor Kits
- Main Units accommodate outgoing J-Frame MCCBs up to 250A max rating
- Add-On units accommodate outgoing G-Frame MCCBs up to 125A max rating or J-Frame MCCBs up to 250A
- Add-on and Integral Metering Options including MID
- Cableways
- Meterways
- Boards fitted with incoming switch unit. User selection of OCR module
- OCR module with adjustable OC & SC protection
- Paint Finish Grey Powder Coat to RAL7035
- Manufactured from 1.6mm gauge steel
- Compliance with BS EN60439-3

Dimensions:

Main Units				
No. of Ways	Height	Width	Depth	Part No.
2 (with TP Sw Unit)	1055mm	900mm	250mm	NHPBJ2W630MU3
4 (with TP Sw Unit)	1160mm	900mm	250mm	NHPBJ4W630MU3
6 (with TP Sw Unit)	1265mm	900mm	250mm	NHPBJ6W630MU3
2 (with 4P Sw Unit)	1055mm	900mm	250mm	NHPBJ2W630MU4
4 (with 4P Sw Unit)	1160mm	900mm	250mm	NHPBJ4W630MU4
6 (with 4P Sw Unit)	1265mm	900mm	250mm	NHPBJ6W630MU4

Add-On Units				
No. of Ways	Height	Width	Depth	Part No.
4 (G-Frame)	267mm	900mm	250mm	NHPBG4W630AU
8 (G-Frame)	425mm	900mm	250mm	NHPBG8W630AU
12 (G-Frame)	583mm	900mm	250mm	NHPBG12W630AU
8 (J-Frame)	583mm	900mm	250mm	NHPBGJW630AU

Cableways - Main Units				
No. of Ways	Height	Width	Depth	Part No.
2 (Standard)	1055mm	250mm	250mm	NHPBJ2CW
4 (Standard)	1160mm	250mm	250mm	NHPBJ4CW
6 (Standard)	1265mm	250mm	250mm	NHPBJ6CW
2 (with Meter knock-out)	1055mm	400mm	250mm	NHPBJ2MCW
4 (with Meter knock-out)	1160mm	400mm	250mm	NHPBJ4MCW
6 (with Meter knock-out)	1265mm	400mm	250mm	NHPBJ6MCW

Cableways – Add-On Units				
No. of Ways	Height	Width	Depth	Part No.
4 (Standard G-Frame)	267mm	250mm	250mm	NHPBG4CW
8 (Standard G-Frame)	425mm	250mm	250mm	NHPBG8CW
12 (Standard G-Frame)	583mm	250mm	250mm	NHPBG12CW
8 (Standard J-Frame)	583mm	250mm	250mm	NHPBJ8CW
4 (with Meter knock-out)	267mm	400mm	250mm	NHPBG4MCW
8 (with Meter knock-out)	425mm	400mm	250mm	NHPBG8MCW
12 (with Meter knock-out)	425mm	400mm	250mm	NHPBG12MCW
8 (with Meter knock-out)	583mm	400mm	250mm	NHPBJ8MCW

Overcurrent Release Modules:



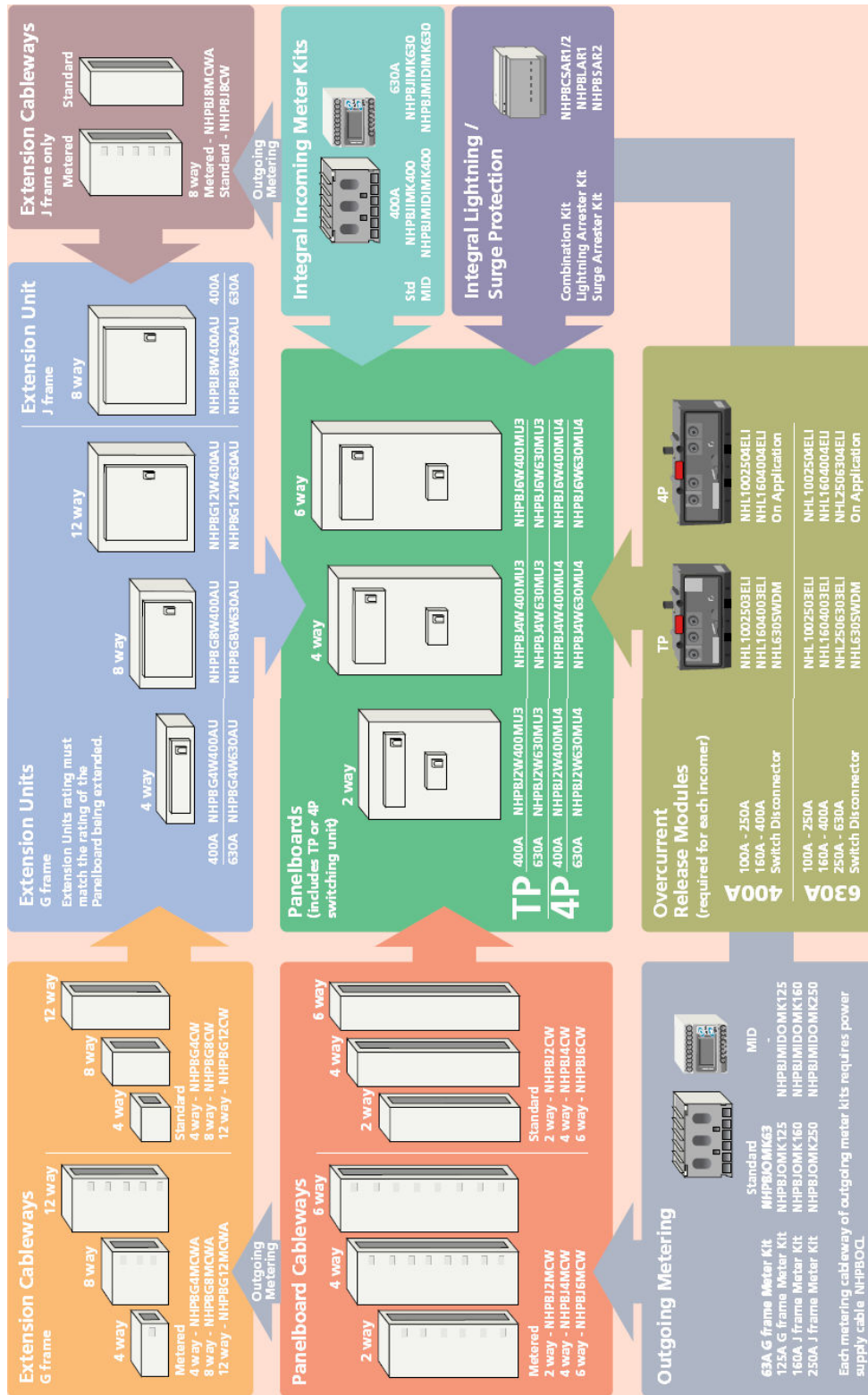
Important Note:

The incoming switch unit is supplied fitted in all the NH250 range. The user only has to select and fit the appropriate trip module (with or without protection)

Current Rating	Polarity	Unit Type	Part No.
250A	TP	Over-current Adjustment (0.4 to 1 xIn)	NHL1002503ELI
400A	TP	Over-current Adjustment (0.4 to 1 xIn)	NHL1604003ELI
630A	TP	Over-current Adjustment (0.4 to 1 xIn)	NHL2506303ELI
400A	TP	Switch Disconnecter	NHL630SWDM
250A	4P	Over-current Adjustment (0.4 to 1 xIn)	NHL1002504ELI
400A	4P	Over-current Adjustment (0.4 to 1 xIn)	NHL1604004ELI
630A	4P	Over-current Adjustment (0.4 to 1 xIn)	NHL2506304ELI

- Over-current release modules feature adjustable over-current and short circuit protection
- 4P Units feature protected neutral
- 4P Switch Disconnecter option available upon request

Selection Guide:



Further Information:

Wylex Sales: 01543 455020
 Wylex Technical: 01543 438320
 Website: www.electrium.co.uk