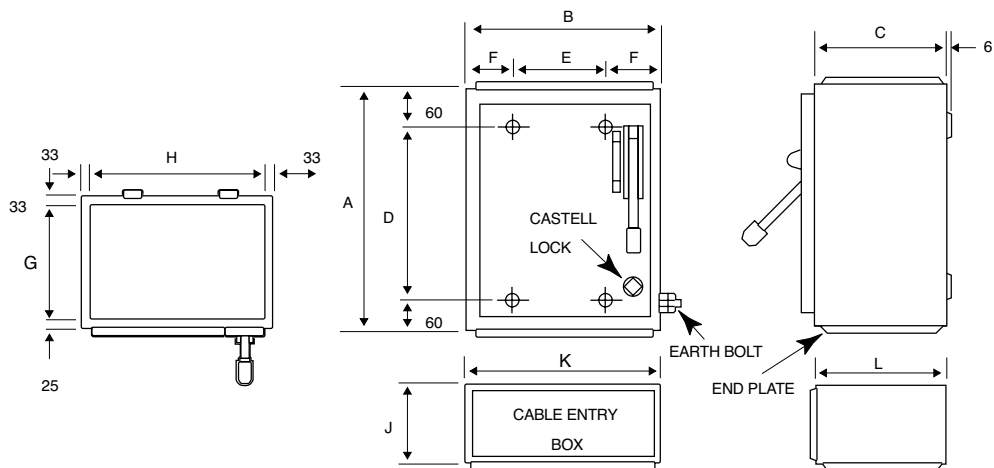


## Switch and fusegear - Quadbreak dimensions

### Fuse switch disconnector

Current rating	Reference number	Switch enclosures (mm)								Packed weight (kg)	Reference number	Cable entry box (mm)		
		A	B	C	D	E	F	G	H			J	K	L
63A	<b>SQB0632K</b> <b>SQB0633K</b> <b>SQB0632L</b> <b>SQB0633L</b>	380	292	200	260	130	81	142	226	14.5	<b>SQBX100</b>	100	292	200
100A	<b>SQB1002K</b> <b>SQB1003K</b> <b>SQB1002L</b> <b>SQB1003L</b>	380	292	200	260	130	81	142	226	15.6	<b>SQBX100</b>	100	292	200
160A	<b>SQB1602K</b> <b>SQB1603K</b> <b>SQB1602L</b> <b>SQB1603L</b>	380	292	200	260	130	81	142	226	15.6	<b>SQBX160</b>	150	292	200
200A/ 250A	<b>SQB2003K</b> <b>SQB2502K</b> <b>SQB2503K</b> <b>SQB2502L</b> <b>SQB2503L</b>	380	340	200	260	180	81	142	274	19.5	<b>SQBX250</b>	180	340	200
315A/ 400A	<b>SQB3153K</b> <b>SQB4003K</b> <b>SQB4003L</b>	455	489	270	335	289	100	212	423	36.2	<b>SQBX500</b>	300	489	270
500A	<b>SQB5003K</b> <b>SQB5003L</b>													
630A 800A	<b>SQB6303K</b> <b>SQB6303L</b> <b>SQB8003L</b>	455	489	270	335	289	100	212	423	36.2	<b>SQBX630</b>	400	489	270

800A unit is provided with cable extension pads which are external to the above dimensions. Cable entry box SQBX630 must be used except where fitted to a Quadbreak busbar chamber.



### Busbar chambers

Reference number	Dimensions (mm)			Packed weight (kg)
	A	B	C	
<b>SBC106</b>	600	350	120	9.6
<b>SBC109</b>	900	350	120	14.25

