

# CARBON MONOXIDE ALARM



**D230COA**

## CARBON MONOXIDE ALARM

BS EN 50291-1:2010

List No	Description
<b>D230COA</b>	230V mains powered Carbon Monoxide alarm with 9V alkaline battery backup

### Features

- 230V AC
- 9V alkaline battery back up included.
- 5 year warranty.
- Self test on sensor & self diagnostic feature.
- Easy installation.

Recommended Locations	Not Recommended
Place the alarm at least 2 metres from fuel burning appliances, and not more than 4 metres away	Do not place closer than 2 metres from fuel burning appliances
Away from draughts, such as doors and windows	Do not wall-mount close to obstructions (e.g. behind curtains, shelving or furniture)
Within hearing distances of bedrooms* If heating appliance is in the bedroom place the alarm at sleeping height	Do not fit in dusty, dirty or greasy areas (e.g. garages or workshops)
If wall-mounting, install at eye-level (approx 1.5m), and at least 30cm from adjoining walls or ceiling	Do not wall-mount within 30cm of the ceiling as this is a "dead air" space
If free-standing, the unit should be placed no more than 1 metre from the ground (to avoid permanent damage in case accidentally knocked)	Avoid humid (bathrooms), cold (-0°C) or hot (+40°C) areas and away from sinks

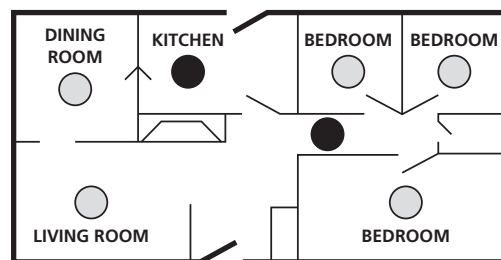
\* It is recommended that at least one carbon monoxide alarm is installed on each level of the home

### Dimensions

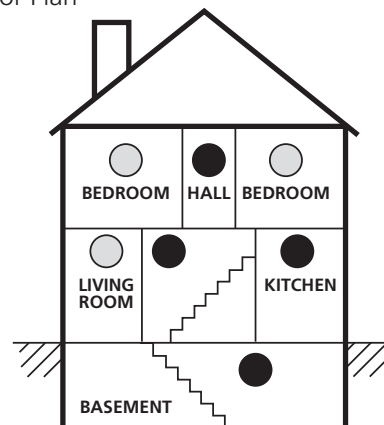
Height	46mm
Width	130mm
Depth	75mm

## SMOKE AND HEAT ALARMS

### Single Floor Plan



### Multiple Floor Plan



- Typical locations for Minimum Protection
- Typical locations for Additional Protection

For illustrative purposes only