

INTERSOC

ON-DESK



POWER AND
DATA AT YOUR
FINGERTIPS



Intersoc on-desk... power and data for modern workspaces

The new Electrak Intersoc on-desk range brings power, data and rapid USB charging to the modern workstation.

With clean lines and stylish aluminium and mirror white finish, Intersoc on-desk's ergonomic design blends in perfectly with contemporary office design schemes and enhances the functionality of the desk space.

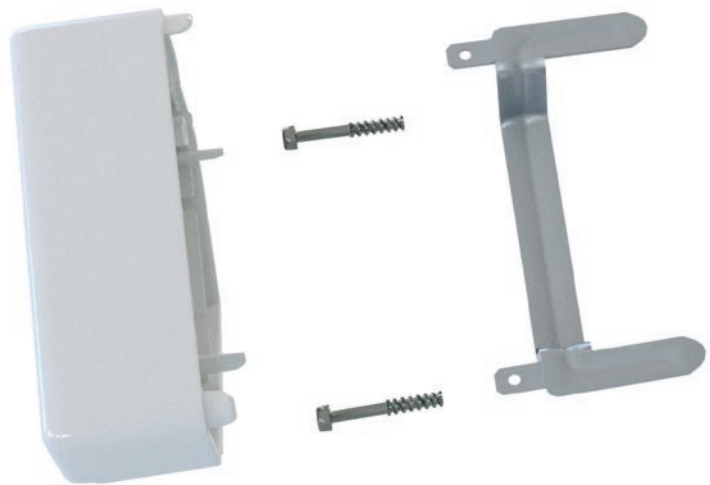


RELIABLE DESKTOP CONNECTIVITY

CAT 5e / 6 / 6A
RJ45 outlets

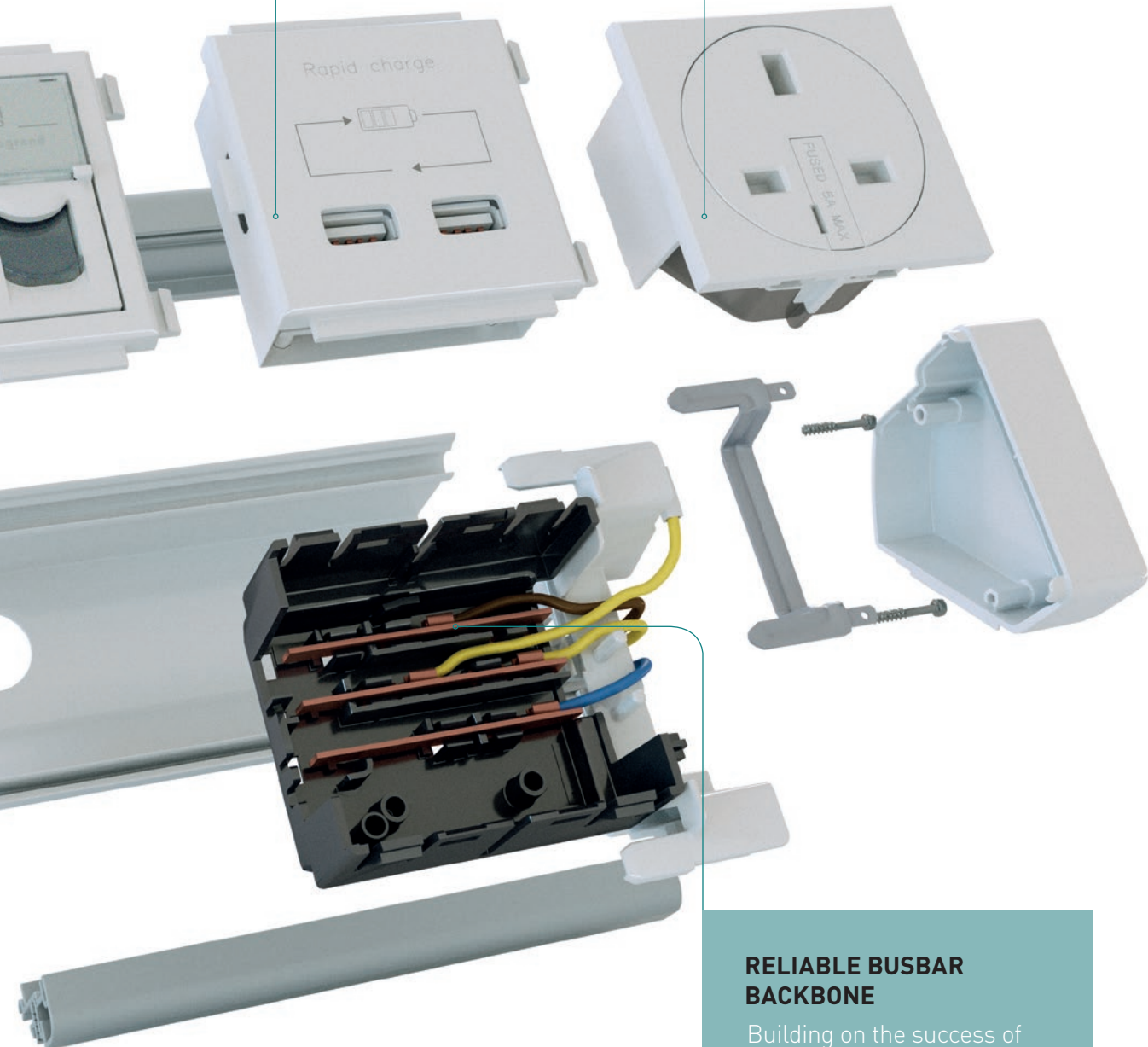
Intersoc on-desk...
delivering power,
data and rapid
USB charging to
the workstation

The fast pace of modern work practices, combined with the need for instant connectivity is placing an ever greater reliance on the use of multiple devices, whether it be at our workstation or whilst we're on the move. The new range of Intersoc on-desk modules offers a convenient answer to the growing demand for user-specific desk power and data access.



Rapid dual
USB charging

BS and International
socket options



RELIABLE BUSBAR BACKBONE

Building on the success of the Electrak system, Intersoc on-desk is powered by a busbar backbone which provides a reliable electrical connection.

Tailored to your requirements

Configuring Intersoc on-desk modules to your exact requirements couldn't be simpler. Select any combination of power sockets and USB charging modules, and further enhance functionality with plug and play data solutions or Euro modules. Legrand's modular wiring accessories, including a range of AV solutions, can also be incorporated.

Putting 'personal' back into desk power and data... Intersoc on-desk can be tailored to the demands of any workstation



RAPID USB CHARGING

Intelligent twin USB modules offer a high specification, rapid charge facility that keeps your mobile devices ready should you need to work on the move. Up to two devices (e.g. tablet and smart phone) can be simultaneously charged at a faster rate than common, lower output chargers.



HIGH PERFORMANCE DATA

Intersoc on-desk offers plug and play CAT 5e and CAT 6 data options or CAT 6A keystone jack modules for higher performance. Euro module options are also available to accommodate a customer's specific data requirements. The innovative design of Intersoc on-desk enables data cables to neatly feed through the rear of the unit (see below).



Watch the Intersoc video at
www.youtube.com/LegrandtvUK

The entire Electrak system is powered by a reliable busbar backbone, from powertrack right through to on-desk modules.



Power is fed to the Intersoc on-desk unit via a choice of 13 A pre-wired plug, GST connector, or via an Intersoc-R under-desk connector.



CAT 5e and CAT 6 data outlets are fed neatly from the rear of the unit via simple RJ45 connection (patch leads not supplied).

Intersoc on-desk modules

		Pre-wired with 3 m flex and BS 1363 plug	Pre-wired with 1.5 m flex and GST connector	Pre-wired with 1.5 m flex and Intersoc-R connector
	Description	Cat. No.	Cat. No.	Cat. No.
	2 x sockets individually fused at 3·15 A	PA3320AA	PB1320AA	PD1320AA
	3 x sockets individually fused at 3·15 A	PA3330AA	PB1330AA	PD1330AA
	4 x sockets individually fused at 3·15 A	PA3340AA	PB1340AA	PD1340AA
	2 x sockets individually fused at 3·15 A plus 1 x rear pluggable CAT 5e / CAT 6 RJ45 outlet	PA3320AB	PB1320AB	PD1320AB
	2 x sockets individually fused at 3·15 A plus 2 x rear pluggable CAT 5e / CAT 6 RJ45 outlets	PA3320AC	PB1320AC	PD1320AC
	2 x sockets individually fused at 3·15 A plus 1 x rear pluggable data USB outlet	PA3320AD	PB1320AD	PD1320AD
	2 x sockets individually fused at 3·15 A plus 2 x rear pluggable data USB outlets	PA3320AE	PB1320AE	PD1320AE
	2 x sockets individually fused at 3·15 A plus 1 x CAT 6A RJ45 outlet with 3 m data lead	PA3320AF	PB1320AF	PD1320AF
	2 x sockets individually fused at 3·15 A plus 2 x CAT 6A RJ45 outlets with 3 m data leads	PA3320AG	PB1320AG	PD1320AG
	2 x sockets individually fused at 3·15 A plus carrier to accept 1 x Euro Module (25 x 50 mm)	PA3320AK	PB1320AK	PD1320AK
	2 x sockets individually fused at 3·15 A plus carrier to accept 2 x Euro Modules (50 x 50 mm)	PA3320AL	PB1320AL	PD1320AL
	3 x sockets individually fused at 3·15 A plus 1 x rear pluggable CAT 5e / CAT 6 RJ45 outlet	PA3330AB	PB1330AB	PD1330AB
	3 x sockets individually fused at 3·15 A plus 2 x rear pluggable CAT 5e / CAT 6 RJ45 outlets	PA3330AC	PB1330AC	PD1330AC
	3 x sockets individually fused at 3·15 A plus 1 x rear pluggable data USB outlet	PA3330AD	PB1330AD	PD1330AD
	3 x sockets individually fused at 3·15 A plus 2 x rear pluggable data USB outlets	PA3330AE	PB1330AE	PD1330AE

Fixings

Description	Cat. No.
Desk clamp	0546 99

Intersoc on-desk modules

with twin outlet USB charger

		Pre-wired with 3 m flex and BS 1363 plug	Pre-wired with 1.5 m flex and GST connector	Pre-wired with 1.5 m flex and Intersoc-R connector
	Description	Cat. No.	Cat. No.	Cat. No.
	1 x unfused socket plus twin outlet USB charger	PA3012AA	PB1012AA	PD1012AA
	2 x sockets individually fused at 3·15 A plus twin outlet USB charger	PA3322AA	PB1322AA	PD1322AA
	3 x sockets individually fused at 3·15 A plus twin outlet USB charger	PA3332AA	PB1332AA	PD1332AA
	1 x unfused socket, twin outlet USB charger plus 1 x rear pluggable CAT 5e / CAT 6 RJ45 outlet	PA3012AB	PB1012AB	PD1012AB
	1 x unfused socket, twin outlet USB charger plus 2 x rear pluggable CAT 5e / CAT 6 RJ45 outlets	PA3012AC	PB1012AC	PD1012AC
	1 x unfused socket, twin outlet USB charger plus 1 x rear pluggable data USB outlet	PA3012AD	PB1012AD	PD1012AD
	1 x unfused socket, twin outlet USB charger plus 2 x rear pluggable data USB outlets	PA3012AE	PB1012AE	PD1012AE
	2 x sockets individually fused at 3·15 A, twin outlet USB charger plus 1 x rear pluggable CAT 5e / CAT 6 RJ45 outlet	PA3322AB	PB1322AB	PD1322AB
	2 x sockets individually fused at 3·15 A, twin outlet USB charger plus 2 x rear pluggable CAT 5e / CAT 6 RJ45 outlets	PA3322AC	PB1322AC	PD1322AC
	2 x sockets individually fused at 3·15 A, twin outlet USB charger plus 1 x rear pluggable data USB outlet	PA3322AD	PB1322AD	PD1322AD
	2 x sockets individually fused at 3·15 A, twin outlet USB charger plus 2 x rear pluggable data USB outlets	PA3322AE	PB1322AE	PD1322AE
	2 x sockets individually fused at 3·15 A, twin outlet USB charger plus 1 x CAT 6A RJ45 outlet with 3 m data lead	PA3322AF	PB1322AF	PD1322AF
	2 x sockets individually fused at 3·15 A, twin outlet USB charger plus 2 x CAT 6A RJ45 outlets with 3 m data leads	PA3322AG	PB1322AG	PD1322AG
	2 x sockets individually fused at 3·15 A, twin outlet USB charger plus carrier to accept 1 x Euro Module (25 x 50 mm)	PA3322AK	PB1322AK	PD1322AK
	2 x sockets individually fused at 3·15 A, twin outlet USB charger plus double carrier to accept 2 x Euro Modules (50 x 50 mm)	PA3322AL	PB1322AL	PD1322AL

Notes:

Other options are available to special order. Contact us on +44 (0) 345 605 4333

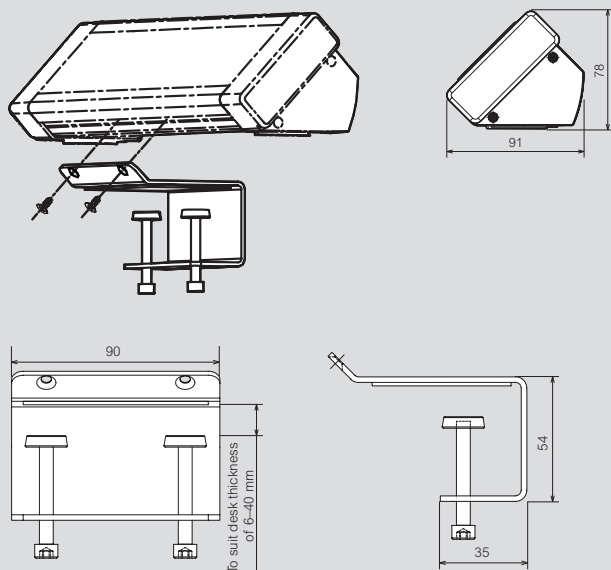
CAT 5e / CAT 6 outlets have a rear facing RJ45 that will accept either CAT 5e or CAT 6 data cabling (no data cabling is included with the product)

CAT 6A outlets are supplied with 3 m pre-wired lead and performance certificate

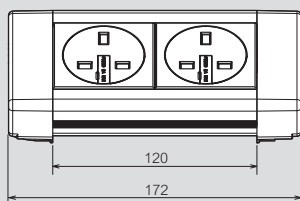
The data USB outlets have a short flying lead at the rear for USB connection to the PC (no additional data cabling is included with the product)

Units supplied with carriers to accept Euro Modules will be supplied with apertures at the rear for the passing of data or AV cables

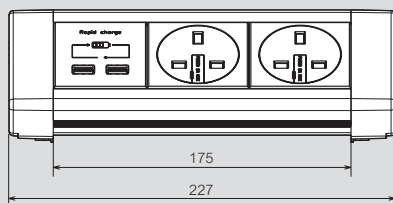
On-desk dimensions (mm)



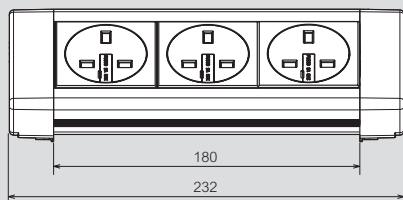
PA3320AA



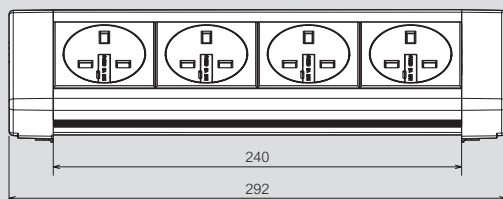
PA3322AA



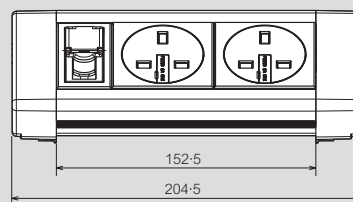
PA3330AA



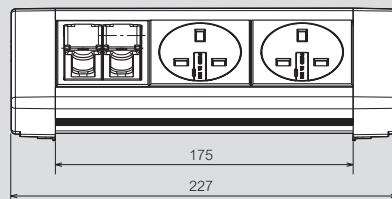
PA3340AA



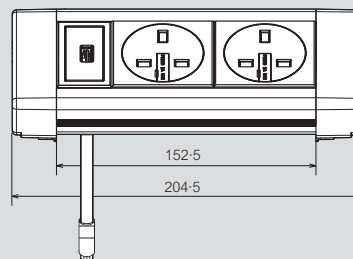
PA3320AB



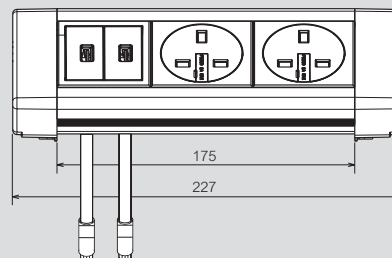
PA3320AC



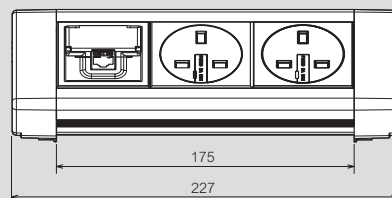
PA3320AD



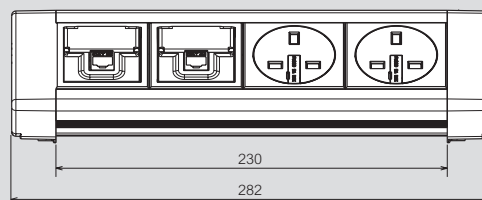
PA3320AE



PA3320AF

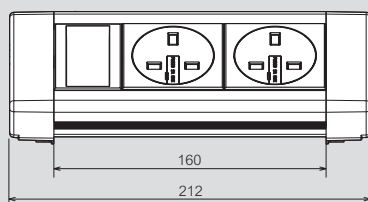


PA3320AG

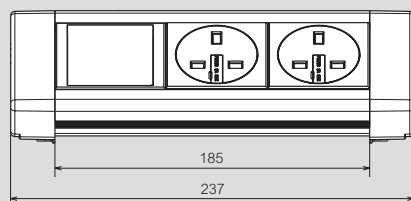


■ On-desk dimensions (mm) (continued)

PA3320AK



PA3320AL



All dimensions (mm) are nominal

■ Testing and accreditation



Complies with BS 5733 and relevant parts of BS 1363-2
Manufactured within an approved ISO 9001 : 2008 and
ISO 14001 : 2004 facility

■ BS 6396 : 2008

Electrical Systems in Office Furniture and Educational Furniture
Specification

Below is a brief outline of the main criteria within the standards :

BS 6396 : 2008 was published with regard to the use of electrical equipment within general office and educational furniture. This standard sets out in its scope the use and testing of electrical socket outlets and associated wiring when used together with a 13 A BS 1363 fused plug for mains supply and makes provision for the routing of cables through furniture

The standard requires individual socket fusing (as per the table below)

Total number of sockets	Individually fused at up to
2, 3 or 4 sockets	5 A
5 or 6 sockets	3.15 A

BS 6396 : 2008 requires RCD protection for electrical sockets

Material specification

Module housing	aluminium / PVC
Module fascia	polycarbonate / ABS
Socket outlets	polycarbonate
End caps	ABS

USB charger module specification

Supply voltage (nominal)	230 V (AC)
Supply current	1.3 mA
Power consumption (max.)	0.3 W
Frequency	50 Hz
Output voltage	+5.0 V \pm 0.25 (DC)
Output current	3.1 A
Output power	15 W (max.)
Over current protection	3.8 A (max.)
Output connectors	2 x USB Type A sockets
Current per socket	2.1 A (max.)

CONTACT DETAILS

Quotations and Technical Support:

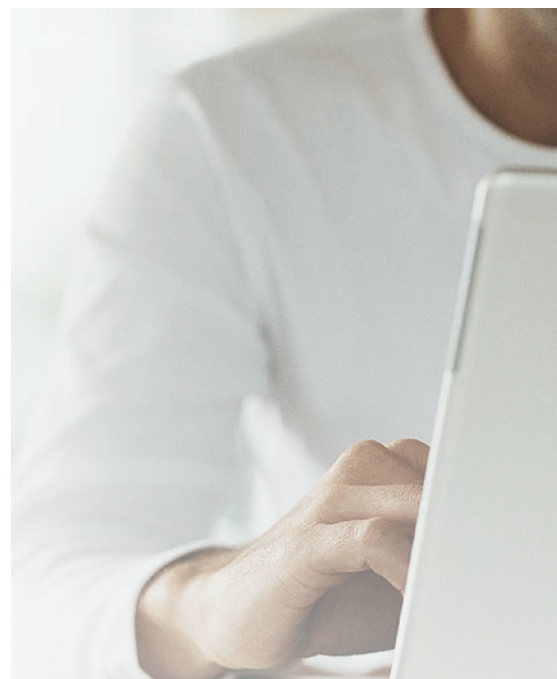
Legrand Electric Ltd.
Great King Street North,
Birmingham, B19 2LF
Tel: +44 (0) 370 608 9020 Fax: +44 (0) 345 600 6760
E-mail: powersales.uk@legrand.co.uk

Customer Services:

Legrand Electric Ltd.
No. 1 Industrial Estate
Medmonsley Road, Consett
County Durham, DH8 6SR
Tel: +44 (0) 345 605 4333 Fax: +44 (0) 345 600 6366
E-mail: powersales.uk@legrand.co.uk

Republic of Ireland:

Tel: 01 295 9673 Fax: 01 295 4671
E-mail: powersales.uk@legrand.co.uk



FOLLOW
US AT



www.legrand.co.uk
www.legrand.ie



www.youtube.com/legrandtvuk



www.twitter.com/legranduk



www.voltimum.co.uk
www.voltimum.ie



Head office (UK and Ireland):

Legrand Electric Limited
Great King Street North, Birmingham, B19 2LF
Tel: +44 (0) 370 608 9000 Fax: +44 (0) 370 608 9004
Website: www.legrand.co.uk

In accordance with its policy of continuous improvement, the Company reserves the right to change specifications and designs without notice. All illustrations, descriptions, dimensions and weights in this catalogue are for guidance and cannot be held binding on the Company. All contents and design presentation included in this publication are © Legrand Electric Limited. All rights reserved. 2016



This document is printed on sustainably sourced paper. Please recycle.

The Legrand logo is a registered trademark of the Legrand group of companies.