



**Switch Fuse Units
for use in Domestic
Household Premises**
(and other buildings)



SWITCH FUSE UNITS FOR USE IN DOMESTIC HOUSEHOLD PREMISES

BS 7671 Amendment No. 3 : 2015 IET Wiring Regulations

REGULATION 421.1.201

From January 2015 Amendment No. 3 to BS 7671 IET Wiring Regulations prescribe that within domestic (household) premises, consumer units and **similar switchgear assemblies** shall have their enclosures manufactured from non combustible material, or be enclosed in a cabinet or enclosure constructed of non combustible material and comply with product standard BS EN 61439-3.

What are Domestic Household Premises ?

Typical Domestic household premises would include single and multiple occupancy homes such as Houses, Bungalows, Apartments, Student lets, Sheltered Accommodation, Farmhouses, Houseboats, Attached & Detached Garages, Workshops and Detached Outbuildings etc.

What is Similar Switchgear ?

Similar switchgear is switchgear that is used for the same fundamental application i.e. a circuit protection assembly with two pole isolator and one or more circuit protection devices e.g. Fuse, MCB or RCD. Therefore similar equipment includes Switch Fuse, Garage Unit, MCB Distribution Board or PV Switchgear etc.

What is Non Combustible Material ?

There are many types of non combustible material however, amendment 3 of the 17th Edition regulations provides an acceptable example as ferrous metal i.e. Steel Enclosures.

What is an Enclosure ?

An enclosure means the box, cover, door, hinges, handle and any components required to maintain the integrity of the unit.

What are Cabinets ?

Typical cabinets are meter cabinets that are normally built into the fabric of the building and that may or may not include consumer units and similar switchgear within. Skeleton consumer units with all metal non combustible enclosures are recommended for all such applications.



SWITCH FUSE UNITS FOR USE IN DOMESTIC HOUSEHOLD PREMISES

BS 7671 Amendment No. 3 : 2015 IET Wiring Regulations



DOMESTIC SWITCH FUSE

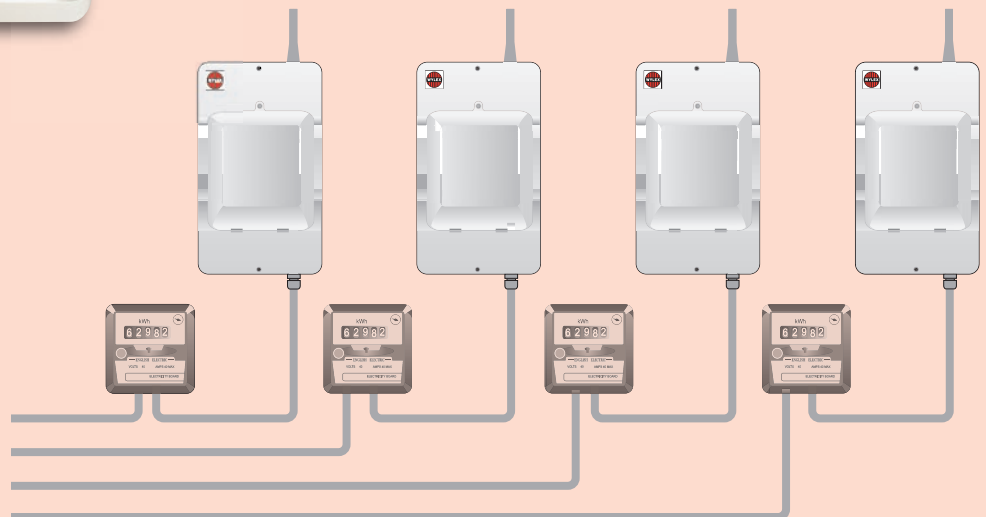
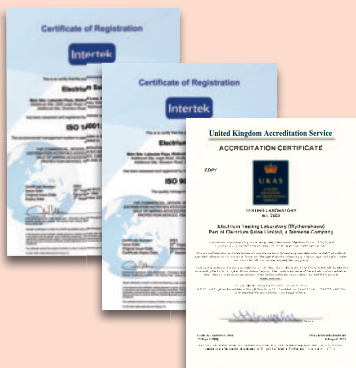
Wylex Domestic Switch Fuse units are available in three ratings 60A, 80A and 100A. These dedicated sub main switch fuse units are designed to make the installation and connection of sub mains or system extensions easy.

All units have been designed, manufactured and tested to meet IEC60947-3. Wylex Domestic Switch Fuse units are supplied complete with a BS1361 fuse and are tested to the relevant clauses within BS EN 61439-3 as required by BS 7671 Amendment 3.

An un-fused version and spare fuses rated from 40A to 100A are also available.

METAL ENCLOSED

- Enclosed in a robust all metal (non combustible) enclosure
- Screw retained cover
- 32mm standard knock out for cable gland - top & bottom
- Dual screw terminals throughout
- Formed metal cover & visor, robust metal enclosure, 1.0mm thick steel
- Live and Neutral cable capacity 16mm² min, 35mm² max
- 16mm Earth terminating point inside enclosure
- Supplied complete with fuse (100A, 80A or 60A)
- Low smoke & fume paint finish
- Lockable mechanism for isolation safety purposes



Typical arrangement for sub mains in apartment block applications.



ALL METAL SWITCH FUSE UNIT - FOR USE IN DOMESTIC HOUSEHOLD PREMISES

CAT REF

DSF100M	Switch Fuse including fuse	100A
DSF80M	Switch Fuse including fuse	80A
DSF60M	Switch Fuse including fuse	60A
DSFNFM	Switch Fuse - Unfused	100A max.
EIU	Cable gland for meter tails	16/25mm ²

- Enclosed in a robust all metal enclosure
- 32mm diameter standard knock out for cable gland (top & bottom)
- Metal door and robust metal enclosure, 1.0mm thick steel with low smoke & fume Epoxy paint finish
- Live and Neutral cable capacity 16mm² min 35mm² max
- 16mm Earth terminating point inside enclosure
- Replacement HRC Fuses
DSF040FL (40A) DSF045FL (45A) DSF050FL (50A)
DSF060FL (60A) DSF080FL (80A) DSF100FL (100A)
- Lockable for safe isolation
- Rotating fuse carrier for easy withdrawal





INSULATED SWITCH FUSE UNIT - FOR USE IN OTHER (NON DOMESTIC) PREMISES

CAT REF

DSF100	Switch Fuse including fuse	100A
DSF80	Switch Fuse including fuse	80A
DSF60	Switch Fuse including fuse	60A
DSFNF	Switch Fuse - Unfused	100A max.

- Bussman cartridge fuse included with device
- Twin terminal screw connections
- Live and Neutral cable capacity 16mm² min, 35mm² max
- In built meter cable guides - clamps
- Fuse cover inside carrier preventing accidental contact
- Lockable switch mechanism for safe isolation
- Replacement HRC Fuses
 DSF040FL (40A) DSF045FL (45A) DSF050FL (50A)
 DSF060FL (60A) DSF080FL (80A) DSF100FL (100A)





Easy open rotary fuse drawer



16mm Earth terminating point inside enclosure



Automatically disconnects the fuse from its holder



With seal facility on terminal screw covers and lockable main switch



Easy access for removal of fuse



Built in twin terminal screw connections



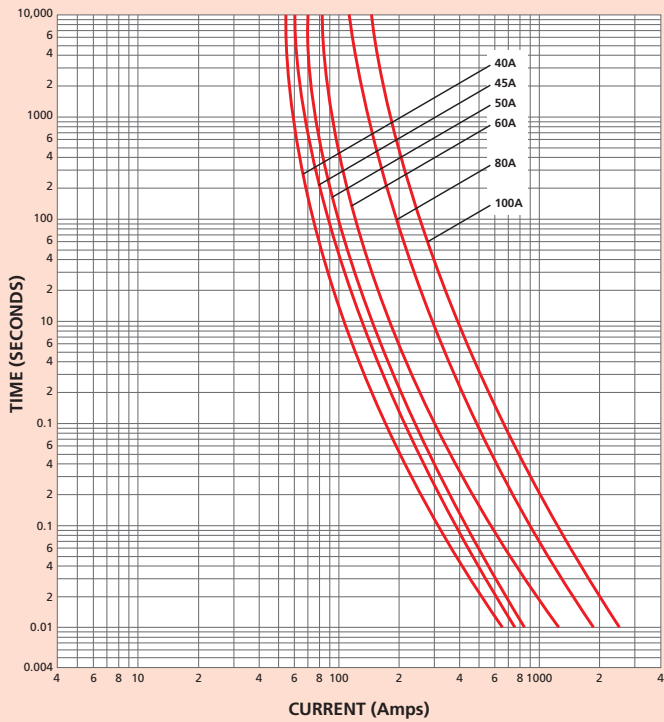
Simple process to replace fuse



Retained cover closure screw

Cartridge fuse is included with Switch fuse. Fuse fully fingerproofed

TIME-CURRENT CURVE CHARACTERISTICS



FUSE LINKS SPECIFICATION

Class of Operation: gG
 Standards/Approvals:

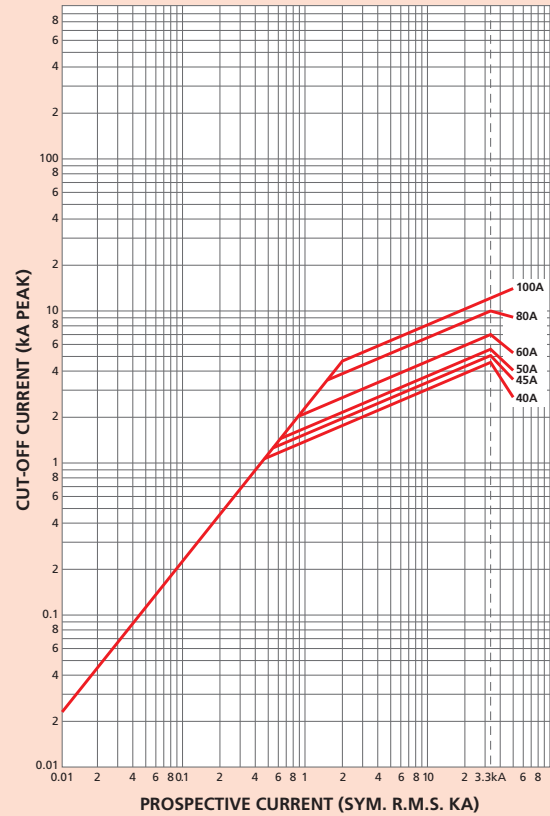
- ASTA Certified
- BS 1361 : 1971 including amendments 1, 2 and 3

TECHNICAL DATA
 Rated Voltage: 415Vac
 Amps: 5 to 100A
 Rated breaking capacity: 33kA

FUSE LINKS DATA

CAT REF	AMP RATING	I ² t (AMP ² SECONDS)			NOM. WATTS LOSS
		PRE-ARCING	TOTAL at 240V	TOTAL at 415V	
DSF040FL	40	2500	6800	14000	3.8
DSF045FL	45	3600	9880	20500	3.8
DSF050FL	50	4720	13000	27000	4.2
DSF060FL	60	9100	25000	52000	4.3
DSF080FL	80	24500	41500	58500	5.4
DSF100FL	100	43500	73500	105000	6.1

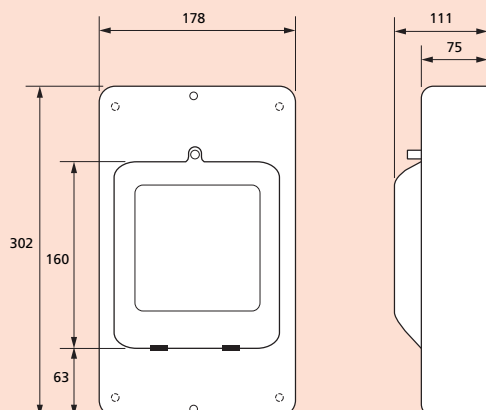
CUT-OFF CURRENT CURVES



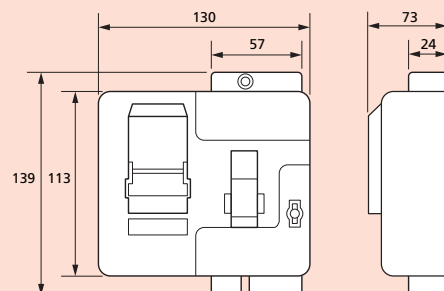
RECOMMENDED TIGHTENING TORQUES

Live and Neutral terminal cage	Earth Terminal cage	Earth Terminal bar (metal clad only)
2.3Nm 16mm ² min 35mm ² max	0.7Nm 10mm ² min 16mm ² max	1.2Nm 10mm ² min 16mm ² max

ALL METAL SWITCH FUSE UNIT



INSULATED SWITCH FUSE UNIT





Electrium



ELECTRIUM SALES LIMITED A SIEMENS COMPANY

Commercial Centre, Lakeside Plaza, Walkmill Lane, Bridgtown, Cannock WS11 0XE.
eMail: info@electrium.co.uk Web: www.electrium.co.uk

UK SALES

Telephone: 01543 455020 Facsimile: 01543 455021 eMail: wylex.sales@electrium.co.uk

TECHNICAL

Telephone: 01543 438320 Facsimile: 01543 438321 eMail: wylex.technical@electrium.co.uk

EXPORT SALES

Telephone: +44 1543 455049 Facsimile: +44 1543 455048 eMail: export@electrium.co.uk

Although every effort has been made to ensure accuracy in the compilation of the technical detail within this publication, specifications and performance data are constantly changing. Latest details can be obtained from Wylex.

Publication No. B2230 11/15
Printed in England.