

## Contents

<b>Hardware and Software requirements</b>	<b>4</b>
<b>Software update</b>	<b>4</b>
<b>Fundamental concepts</b>	<b>4</b>
Function selection menus and pushbuttons	5
Connecting the device to a PC	6
Send the configuration	7
Receive the configuration	9
Update the Firmware	9
Request device info	10
<b>Project configuration</b>	<b>11</b>
<b>Network connections</b>	<b>11</b>
Ethernet	11
<b>General parameters</b>	<b>12</b>
Clock	12
Univocal codes	13
Bacnet ID	13
<b>Security</b>	<b>14</b>
Authentication	14
IP address enabling	14
<b>Bacnet</b>	<b>15</b>

## Hardware and Software requirements

System requirement\*

- PC with Pentium > 2 GHz
- CD-ROM unit
- Video resolution 800 x 600, 256 colours
- Windows XP SP2 (32 bit), Windows Vista (32 bit or 64 bit) or Windows 7 (32 bit or 64 bit)
- 1 GB RAM memory (XP)
- Hard Disk: 500 MB minimum free space available
- Framework .NET 3.5 SP1 of Microsoft™

\*The updated requirements can be found on the [www.legrand.com](http://www.legrand.com) website



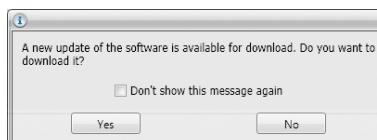
*Warning: The TiOpenBacnet software is the fundamental tool for the configuration of the F450 Gateway Open-Bacnet, which, for convenience, will be referred to as device in this manual.*

*This software is protected by exclusive rights, owned by the company Legrand SNC.*

## Software update

Once installed, the TiOpenBacnet software will automatically search for any updated versions on line.

If any are found, the user will be asked to enter a path for saving the new updated version executable file:



It will however still be possible to work using the current version and install the update at a later date.

## Fundamental concepts

The TiOpenBacnet software gives the possibility of creating and modifying a project containing the configuration of the device interfaced with a Bacnet protocol based air conditioning system. The created project must be sent (Send the configuration) to the device. In the same way it will be possible to receive the project file (Receive the configuration) from the device, to check or edit the configuration contained.

Using the TiOpenBacnet program it is also possible to update the firmware version with new ones.

To create a new project

- Run TiOpenBacnet.
- Make a new project.
- Send the data to the device.

To edit an existing project

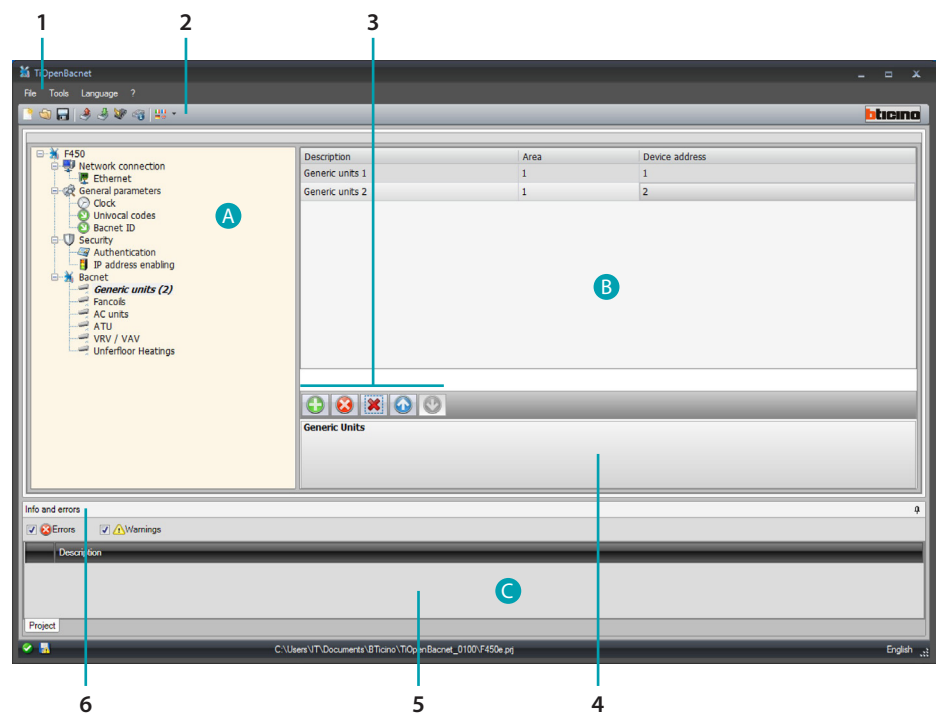
- Receive the current configuration data from the device.
- Make any modifications.
- Send the data of the project created to the device.



*Attention: for the TiOpenBacnet software to work correctly, the device must be installed in agreement with the indications given in the instruction sheet supplied with the device.*

## Function selection menus and pushbuttons

On opening the program, the start screen is displayed, which contains all the configuration parameters. The Screen essentially consists of 3 sections: the left sections (A) lists all the parameters and functions that need to be configured in a tree menu. Based on the selection made by the user, the central section (B) will show the data fields to be selected or entered. The bottom section (C) displays any error configurations in red. These can be clicked to display which functions have been configured wrongly.



1. Pull-down menus
2. Pushbutton menu
3. Item management bar



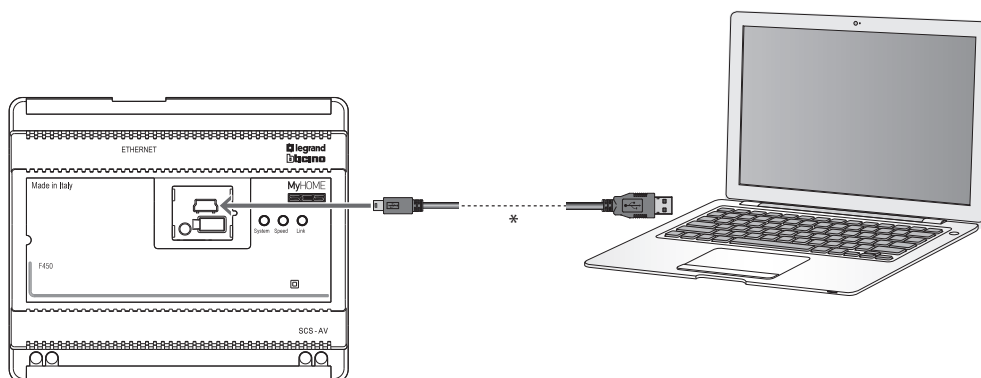
1. Add an object
2. Delete an object
3. Delete all objects
4. Move objects

4. Function description
5. Info and Errors area
6. Opens the Info and Errors area

### Connecting the device to a PC

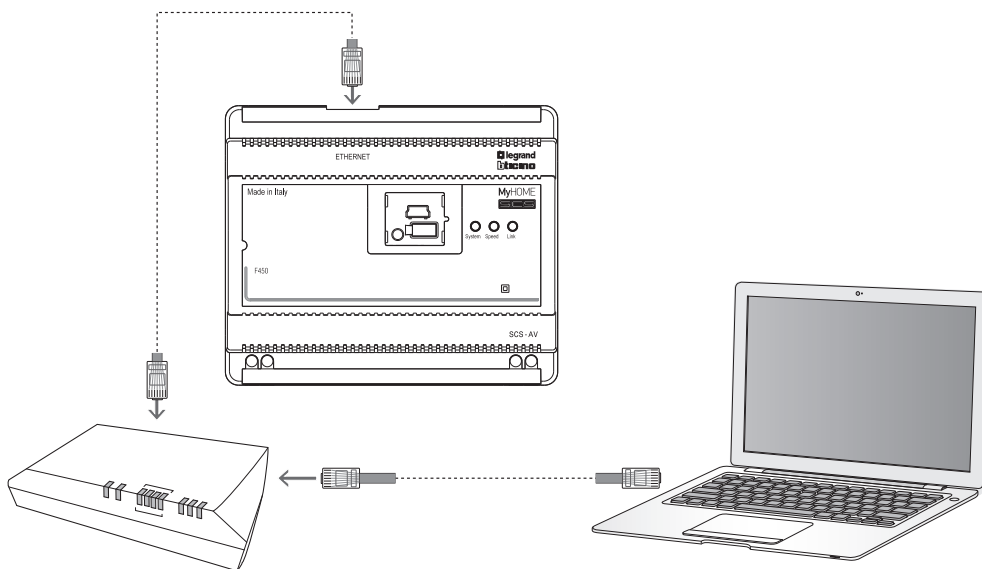
To receive/send the configuration completed using the TiOpenBacnet software, or to update the firmware, connect the device to the PC using a USB/miniUSB cable, the serial-USB adapter (3559), or an Ethernet cable.

#### USB connection



(\*) Crossover cable for direct connection.

#### Ethernet connection

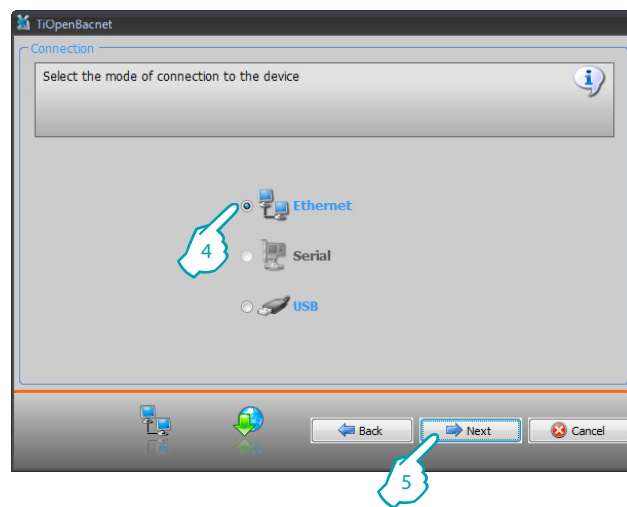


## Send the configuration

It allows the user to send the project created to the device.

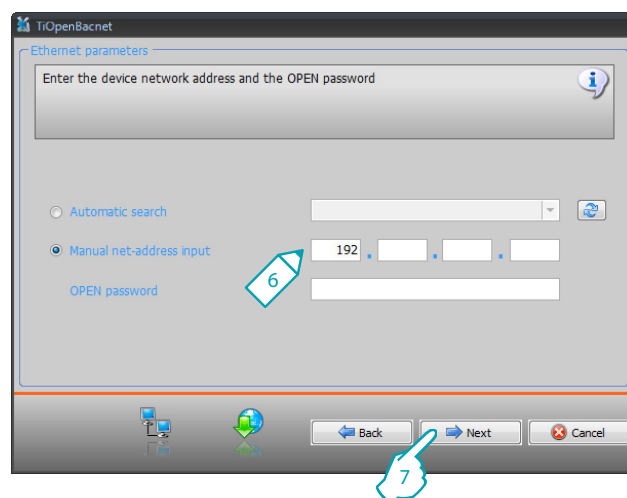
Procedure:

1. Connect the device to a PC as shown in the corresponding section.
2. From the Tools pull-down menu select Send Configuration.
3. A screen appears, for the selection of the mode of connection with the device. The sending operation can be performed using two different types of connection:
  - Ethernet: by entering the network address, or by automatic search;
  - USB: through automatic detection of the connected items.



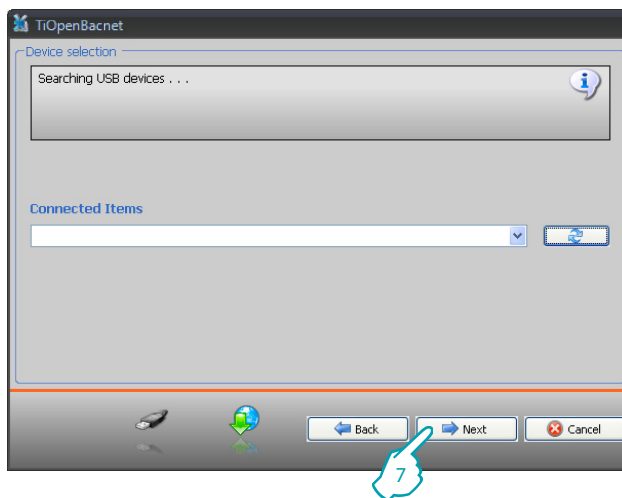
4. Select the mode
5. Click Next

Ethernet connection



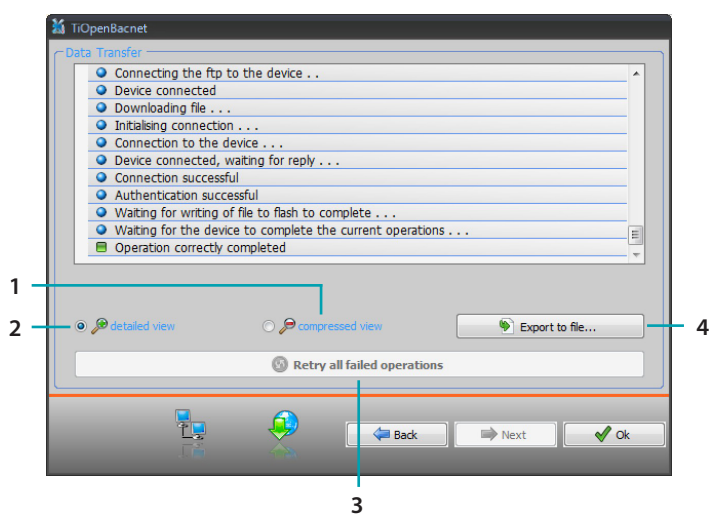
6. Enter the network address and the OPEN password
7. Click Next

## USB connection



6. Wait for the device to be recognised automatically.
7. Click Next.

The project is transferred to the device.



1. Hide the details of the current configuration forwarding operation
2. Display the details of the current configuration forwarding operation
3. Repeat the operation if unsuccessful
4. Export the log file



## Receive the configuration

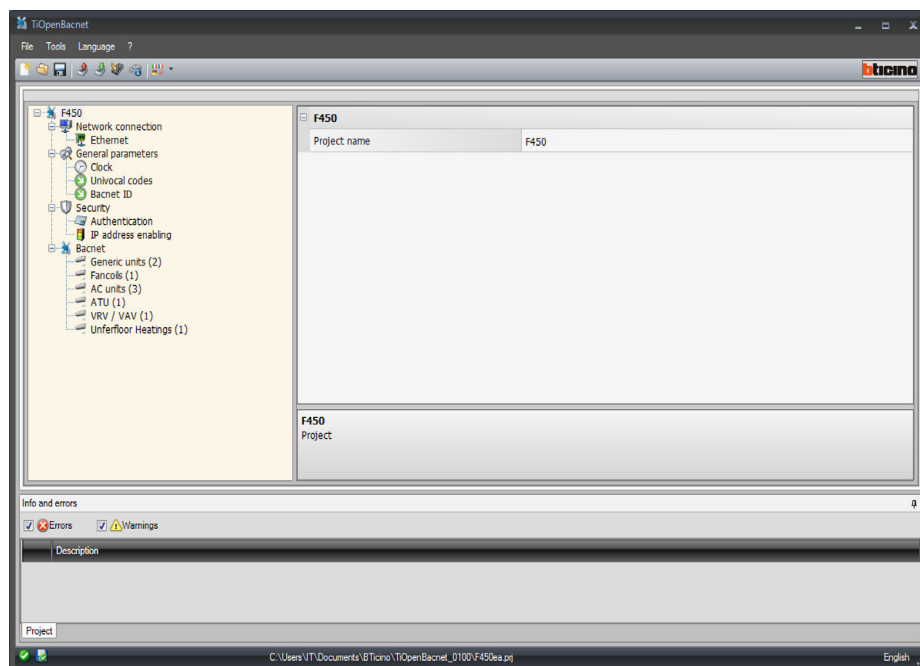
It allows the user to receive the configuration from the device; once the configuration has been acquired, this can be changed and saved, or it can be resent to the device.

Procedure:

1. Connect the device to a PC as shown in the corresponding section.
2. From the Tools pull-down menu select Receive Configuration.

A mask is displayed, for the selection of the mode of connection to the device (for the connection procedures see the Send the Configuration section).

After selecting the connection mode, Click Next to load the project currently installed on the device.



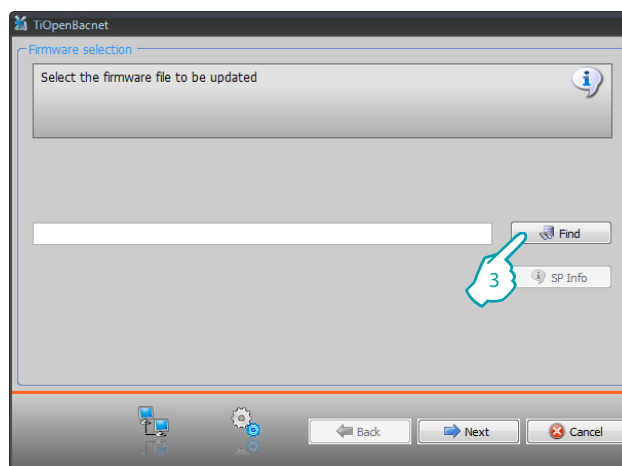
## Update the Firmware

It allows the user to update the device firmware.

Procedure:

1. Connect the device to a PC as shown in the corresponding section.
2. From the Tools pull-down menu select Update Firmware.

The following screen appears, prompting the user to search for the folder containing the firmware file with extension .fwz (compressed file).



3. Click Find.  
Select the file and click Open to continue.

This action will open a mask for the selection of the mode of connection to the device (for the connection procedures see the Send the Configuration section).

### Request device info

It displays some information on the device connected to the PC.

Procedure:

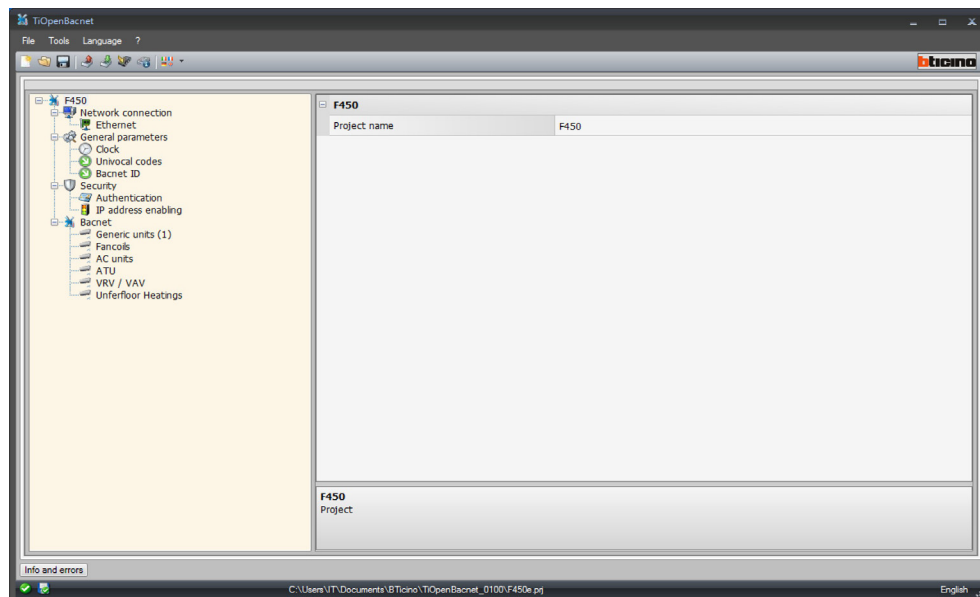
1. Connect the device to a PC as shown in the corresponding section.
2. From the Tools pull-down menu select Request Device Info.

This action will open a mask for the selection of the mode of connection to the device (for the connection procedures see the Send the Configuration section).  
After selecting the connection mode, Click Next to display a screen showing the device hardware and software features.

## Project configuration

This section can be used to configure a new project, or to change an existing one.

1. From the File menu select New. The following window appears:



2. Enter the configuration data in the various zones.

## Network connections

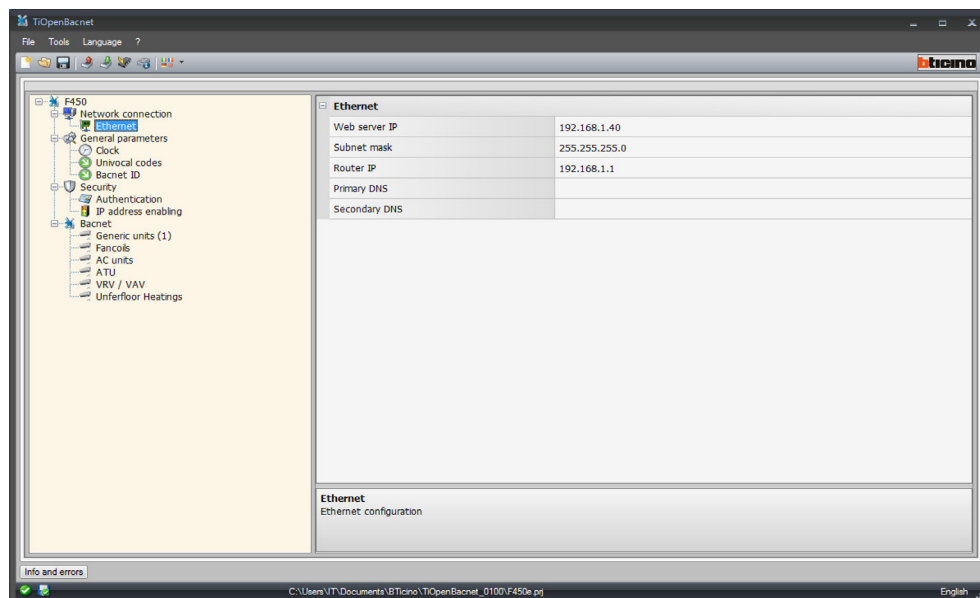
The technical parameters for the network connections are configured in this section.

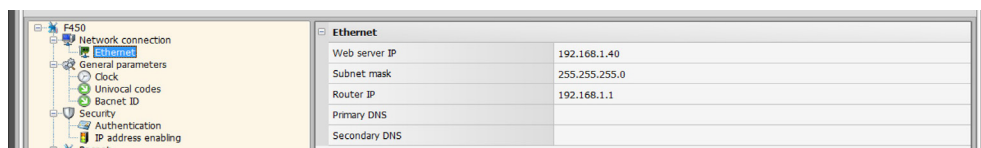
### Ethernet

This screen can be used to enter the parameters for connection to the Ethernet network.



*Before editing the default values, contact the network administrator, as well as making the service inactive, incorrect values could cause malfunctions in the communication of other network equipment.*





#### Configuration:

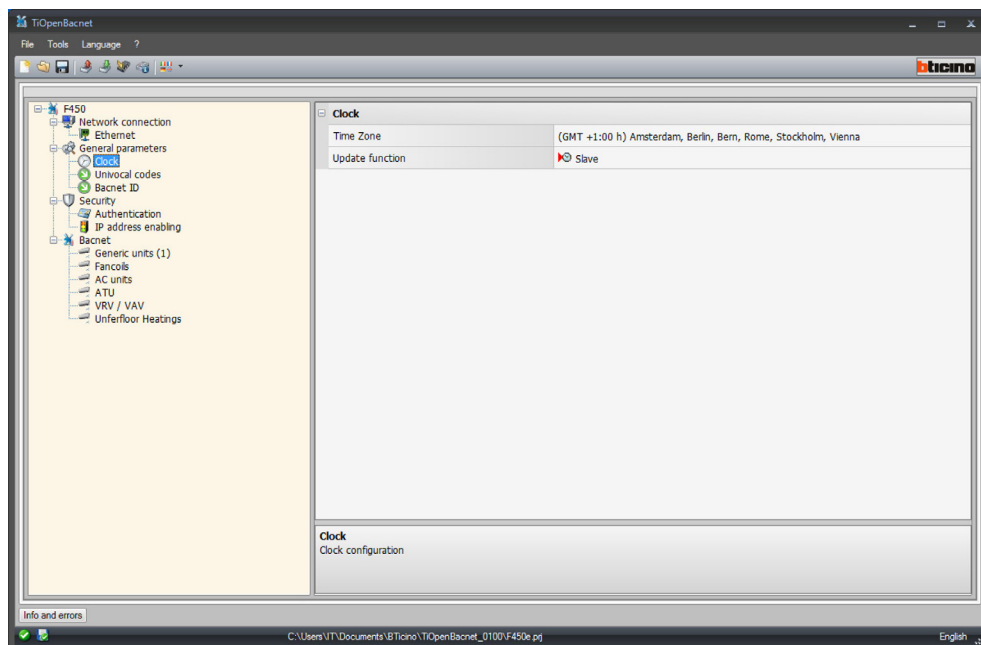
- **Web server IP and Subnet mask**  
Enter the typical parameters of TCP/IP protocol networks required for identifying the device within the local network. Remember that the device needs a “static” (fixed and unique) IP address to be able to work correctly.
- **Router IP**  
Enter the IP address of the router, if any. If there is a router the field must be filled in, to ensure the outgoing Services, such as sending e-mails.
- **Primary DNS and Secondary DNS**  
Enter primary and secondary IP address of the Internet Service Provider (ISP) supplied at the time of subscription.

### General parameters

This section is used for the configuration of the General device parameters.

### Clock

This screen is used to enter the parameters for managing the time the device and the system will refer to (Master function active).

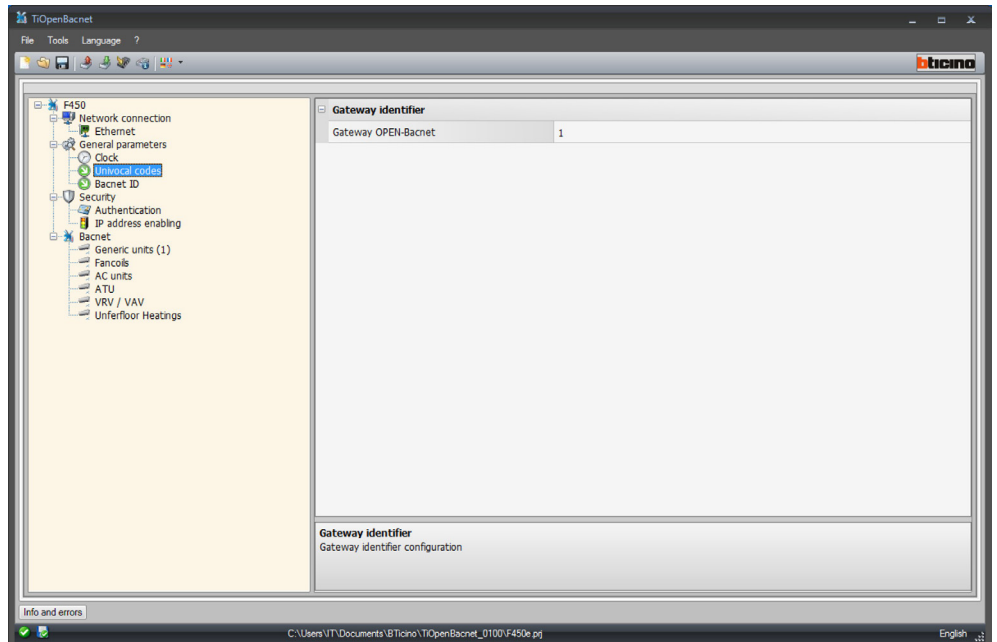


#### Configuration:

- **Time zone**  
Enter the local time zone.
- **Update function**  
Define if the device is a system time synchronisation “Master”, in which case the internal clock of the device will be used as time reference by other devices of the My Home system.

## Univocal codes

This screen is used to configure the gateway ID.

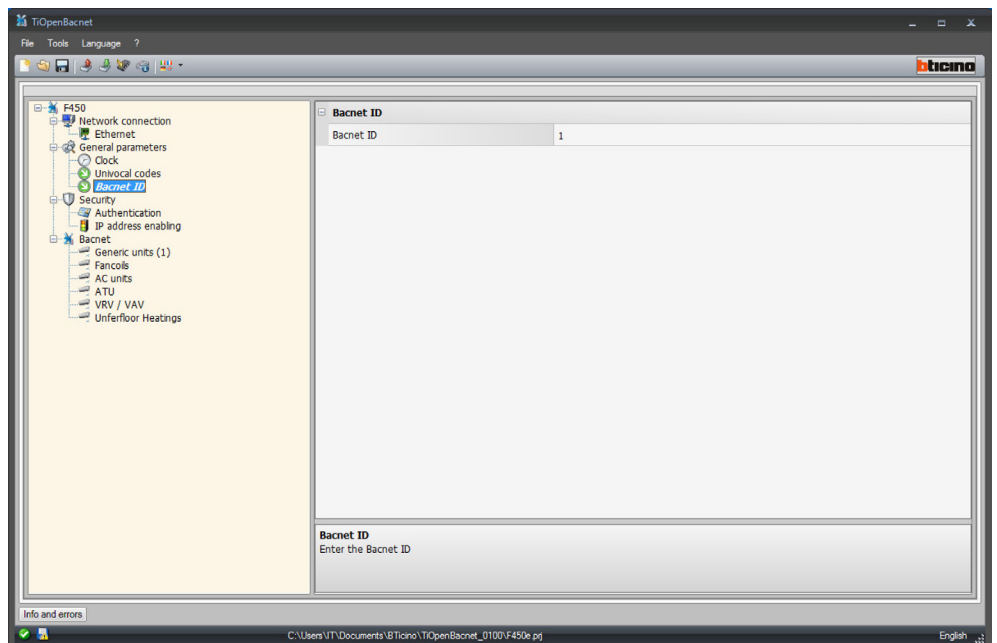


Configuration:

- **OPEN-Bacnet Gateway**  
Enter a unique ID number for the OPEN-Bacnet gateway function.

## Bacnet ID

The Bacnet address can be entered in this screen.



Configuration:

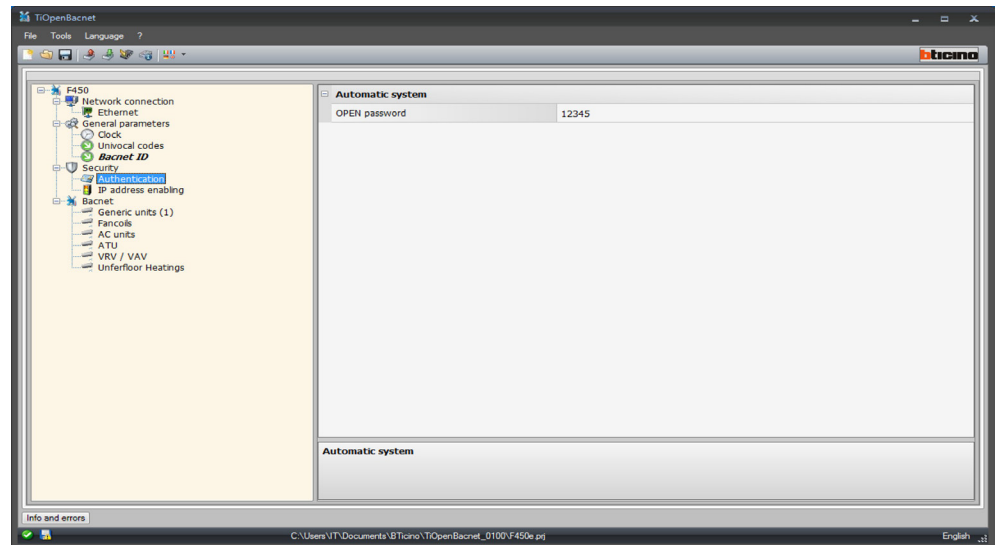
- **Bacnet ID**  
Enter the Bacnet address.

## Security

This section is used to set the safety parameters.

## Authentication

This screen can be used to set the authentication parameters for access to the device.



Configuration:

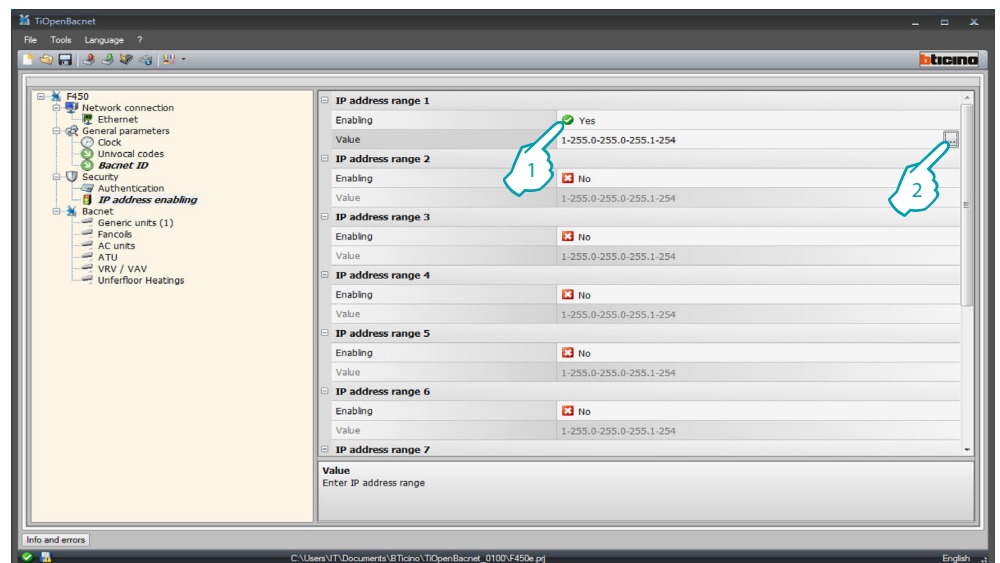
- **OPEN Password**  
Enter the OPEN password for the device.



*Attention: The default OPEN password in the devices is 12345.*

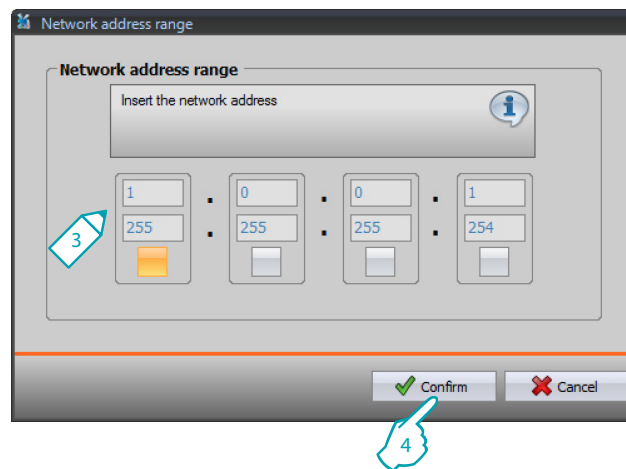
## IP address enabling

This window can be used to enter up to 10 IP address ranges with connection to the device enabled, without the need for entering the OPEN password.



Procedure:

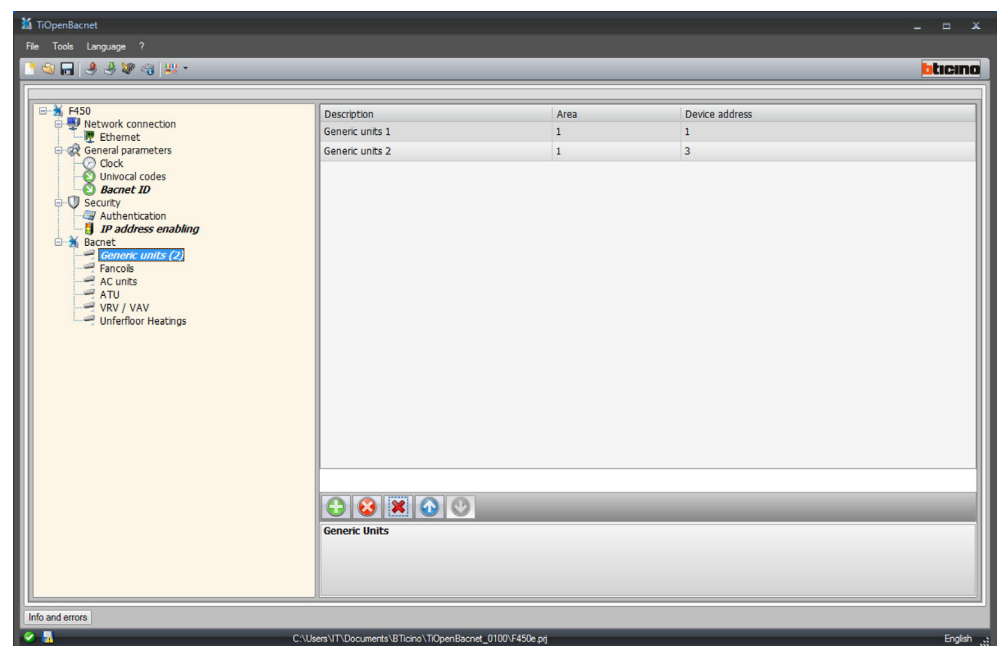
1. Enable the interval of IP addresses.
2. Click.



3. Enter the range of network addresses.
4. Confirm.

### Bacnet

This section can be used to configure the temperature control items of the Bacnet system to be controlled from the dedicated page (HVAC) of the My Home Touch Screen.



Items available:

- Generic units
- Fancoils
- AC units
- ATU
- VRV / VAV
- Underfloor heating

Configuration:

- **Description**  
Enter the item description (15 characters max.)
- **Device area / address**  
Enter the address of the object to be used in the MyHOME\_Screen configuration

Legrand SNC  
128, av. du Maréchal-de-Lattre-de-Tassigny  
87045 Limoges Cedex - France  
[www.legrand.com](http://www.legrand.com)

BTicino SpA  
Via Messina, 38  
20154 Milano - Italy  
[www.bticino.com](http://www.bticino.com)