

## SCS-SCS gateway

F422

### Description

The SCS/SCS gateway is an interface that provides communication among BUS systems with SCS technology, even if they perform different functions. The interface has two BUS clamps, IN and OUT.

On the front is a C key for virtual configuration and a LED for the notification of:

- correct power supply and configuration (ON steady),
- BUS not detected (OFF),
- configuration not detected or incorrect configuration (flashing).

The device may operate in six different modes:

- Physical expansion for MY HOME and Lightening Management: can increase the total BUS length or exceed the absorption limit of 1200 mA for the individual power supply.
- Logical expansion for MY HOME: can increase the number of devices of a system, which is 175 (max 11 in rooms defined with A = 0 to 10 and 16 light points with PL = 0 to 15). Address A = 0, PL = 0 is not permitted.
- Burglar alarm/automation interface for MY HOME: it allows communication between these two systems.
- Public riser: it provides alarm event supervision for the common parts of the video door entry system.
- Galvanic separation for MY HOME: can interface two different functions (ex.: Sound system with Automation).
- Separazione fisica: raggruppa le caratteristiche della modalità Espansione fisica e della modalità Separazione galvanica. Utilizzabile per impianti con dispositivi predisposti per la configurazione virtuale.

**NOTE: regardless of the interface mode of use, it must be taken into account that the two Buses connected constitute at all effects two systems, and, as such, they must be subjected to all existing sizing and installation rules.**

### Technical data

Power supply from SCS BUS:	27 Vdc
Operating power supply with SCS BUS:	18 – 27 Vdc
IN clamp absorption:	25 mA
OUT clamp absorption:	5 mA
Dissipated power with max. load:	1 W

### Dimensional data

Size: 2 DIN modules

### Configuration

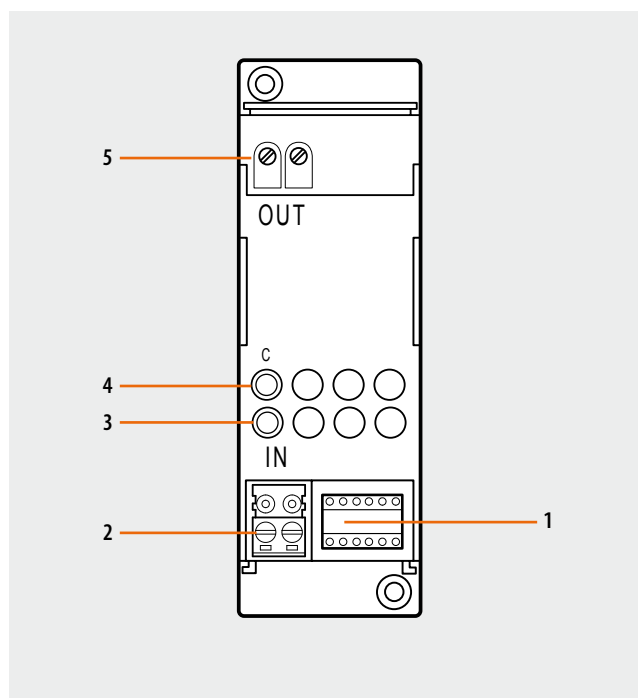
⊙	⊙	⊙	⊙	⊙
I1	I2	I3	I4	MOD
⊙	⊙	⊙	⊙	⊙

Sockets I1, I2, I3, and I4 are used to uniquely identify, using numerical configurators, the addresses of the interfaces inside the system. The interface may also be configured using the Virtual Configuration application as indicated in the software User Manual.

#### 1) Operating mode "Physical expansion" - configurare MOD = 1 -

With the interface configured in this mode, it will be possible to extend the physical limit of the maximum length of the BUS, or exceed the limit of 1200 mA delivered by the individual power supply, but not the maximum number of actuators (max. 175).

The positions identified with I1 and I2 must not be configured. The "separation address" between the two buses connected to the interface must instead be defined in positions I3 and I4. Supposing as in the example that I3=3, I4=2:

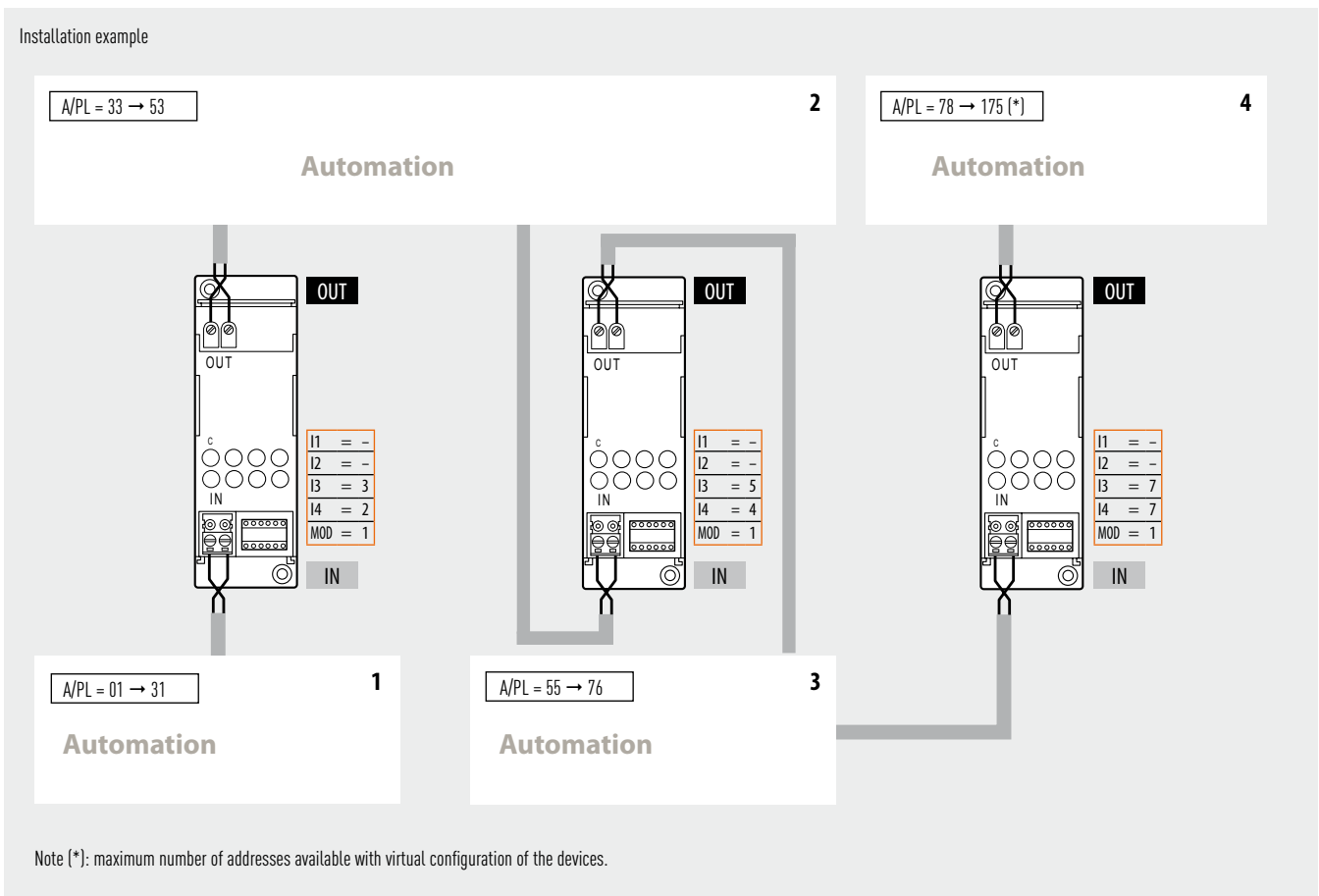


### Legend

1. Configurator socket
2. BUS
3. Signalling LED
4. Pushbutton for virtual configuration
5. OUT clamp

- On the input BUS (IN) the addresses must go from A=0 / PL=1 and A=3 / PL=1;
- On the output BUS (OUT) the addresses must be between A=3 / PL=3 and A=9 / PL=9 or the address of the next interface. As it can be seen from the example, all the automation BUS 1 addresses are lower than that of the interface, while all the automation BUS 2 addresses are higher; the interface address therefore separates all the addresses of which the complete system might be made up of into two or more blocks.

Installation example



**Installation rules:**

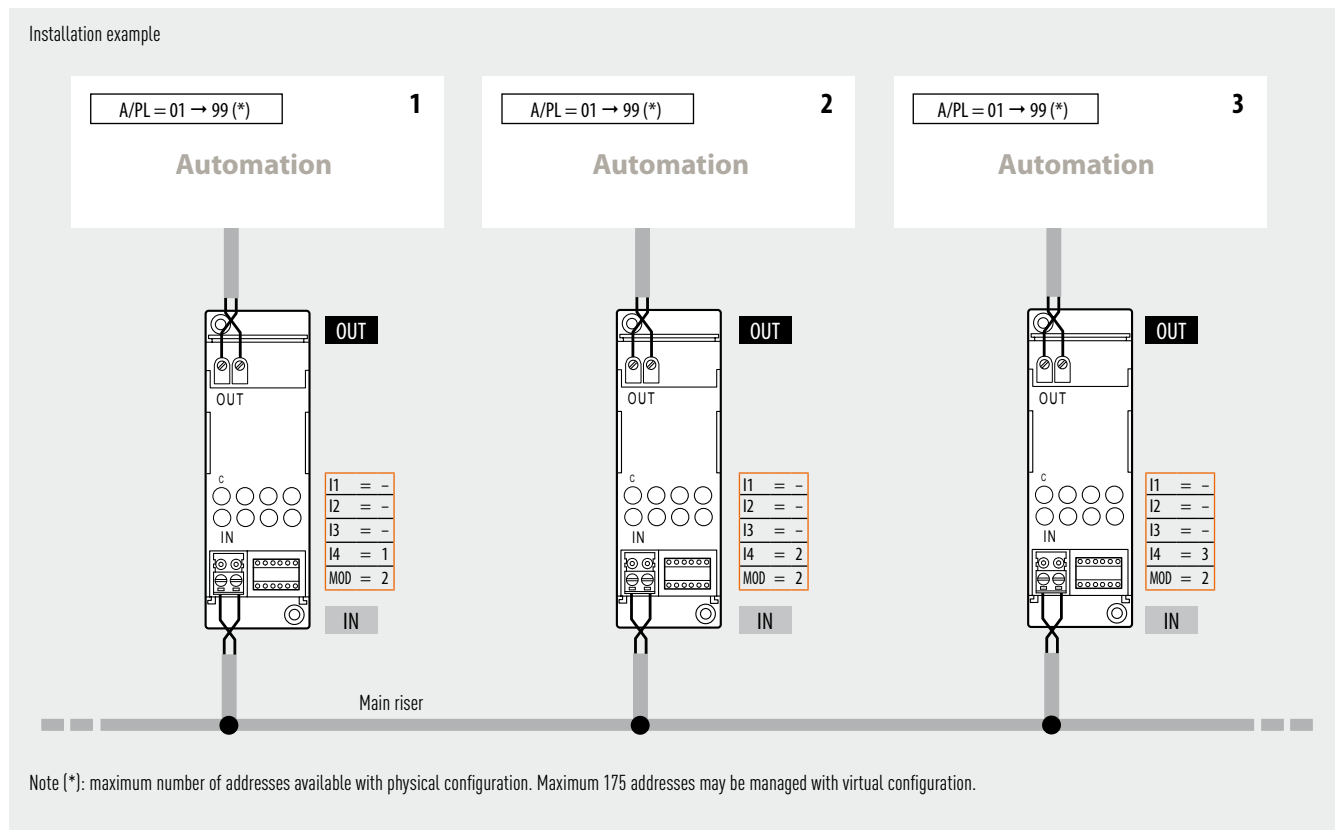
- Configure both I3 and I4 with configurators from 1 to 9, to set the separation between the two BUSES.
- I1 and I2 must not be configured.
- If several interfaces are installed in series, the addresses of the devices between one interface and the other must be within those of the two interfaces (see system example).
- In this mode, it is not possible to install two interfaces in parallel on the same BUS.
- It is possible to install up to four interfaces in series, which subdivide the system in 5 separate sections, individually powered.
- The scenario module, the memory module, the IR emitter for the control of air conditioning units, and the devices that can be configured in self-learning mode, must be installed on the BUS section corresponding to the own local address (e.g. if the scenario module is configured as A=0/PL=1, it will have to be placed on system no. 1 - see system example).
- The web server and the scenario programmer must be installed on the BUS line with the lowest addresses (system 1 in the drawing).
- All the control devices configured to send Point-point, Room, Group and General controls can be connected on either branch of the system (1 or 2) regardless of their addresses in A and PL positions.
- This is also true in the case of actuators configured in the "slave" operating mode.
- Interface item F422 allows the transit between the various systems of the Point-Point, Group, Room and General controls. As an example, install a control configured with A=1 and PL=5 in system 2 to control actuator A=1 and PL=5 installed in system 1.
- Within the system, no device must be configured with the same address as the interface.

## 2) "Logic expansion" operating mode - MOD = 2 configurator

This mode enables separation of control systems, with each of them therefore capable of using all the addresses available. It is therefore possible to connect several systems to an automation BUS, with each system having all the 175 addresses available. The BUS to which all others are connected therefore operates as main riser. This BUS must necessarily belong to an automation system. It is recommended that this mode is used for systems installed in large villas or in the service/industrial sector.

A typical example may be a large villa on several floors: A system may be installed for each floor, all connected to each other through another system operating as a riser.

The positions identified with I1, I2 and I3 must not be configured, while in the I4 position, the address of the interface (I4 from 1 to 9) connected to the riser must be configured.



### Installation rules:

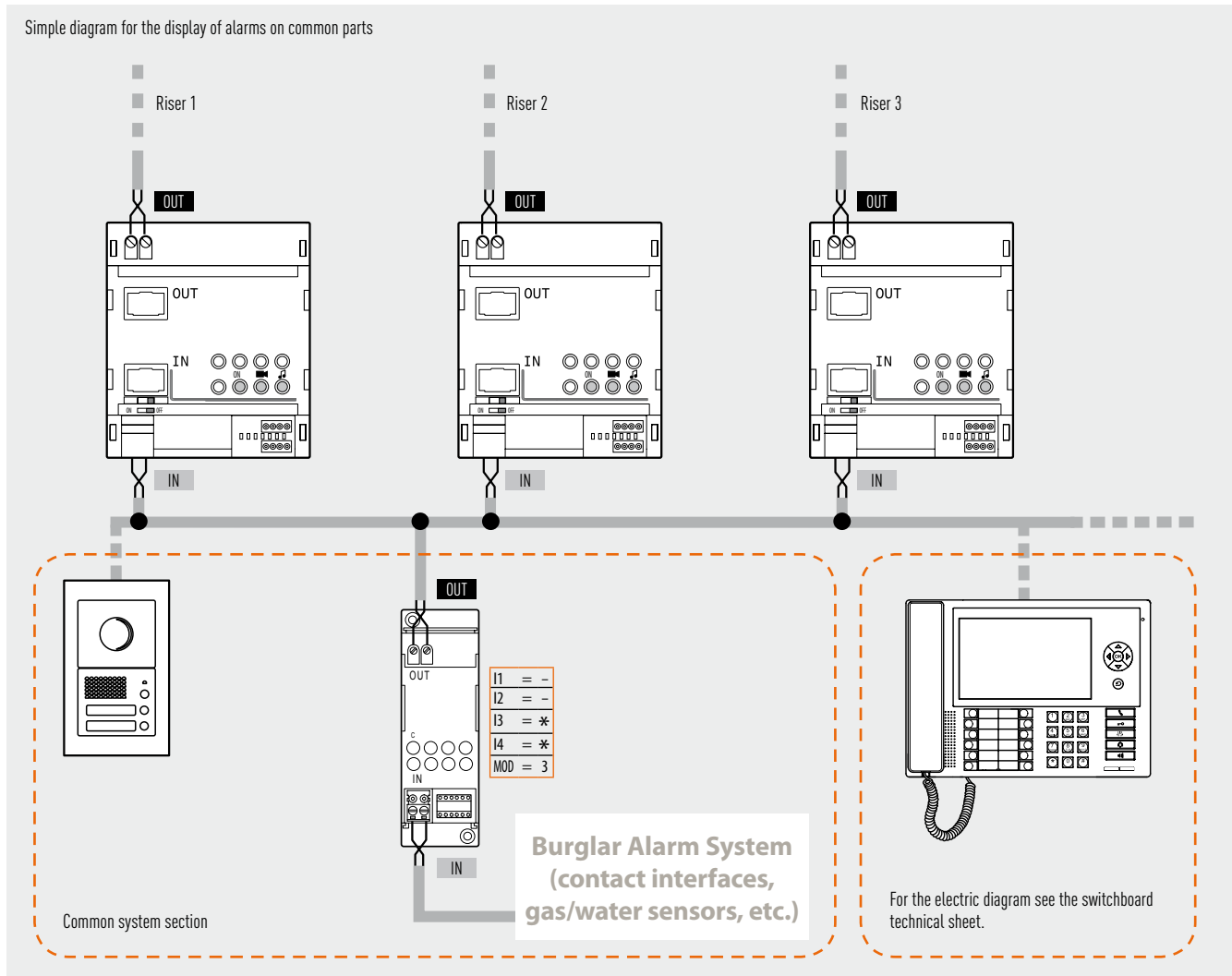
- Configure I4 to give a number from 1 to 9 to the Buses connected to the riser.
- I1, I2 and I3 must not be configured.
- The BUS of the individual system connected to the main riser must be connected to the OUT clamp of the interface.
- The main riser must consist of an Automation system in which, in addition to the corresponding control devices and actuators, it will also be possible to install the Energy management central unit, temperature central unit, and the MH200N scenario programmer.
- In this mode up to nine interfaces may be connected to the main riser; it is possible to manage up to ten systems as if they were a single one. Each system connected to the riser can have all 81 addresses allowed.
- The web server and the scenario programmer must be installed on the BUS line with the lowest addresses (system 1 in the drawing).

- From the main riser (IN clamp), arrive the general controls (rolling shutters and lights), group controls (this allows a minimum centralisation of the controls, using standard devices of the control system), and power management controls (to allow positioning of the power management central unit on the riser). On the other hand, point-point controls are stopped by the interface, and therefore remain inside the individual system, including the riser. The controls of all systems other than automation, including AUXILIARY controls, travel in the two directions without any processing. In order to send controls from one system to the other, the special controls H4651M2, L4651M2 and AM5831M2 may be used in extended control mode.
- The interface address cannot be the same as that of other devices (e.g. configure the interface I1= -, I2= -, I3= -, I4=1 and MOD = 2, if a scenario module is configured with A = - and PL = 1).

3) "Burglar alarm/automation interface" mode- MOD = 3 configurator -

This mode is indicated when display of burglar alarms and technical alarms are required, generated within the common sections, using a switchboard, item 346310, installed on the backbone or the riser of the video door entry system.

Simple diagram for the display of alarms on common parts



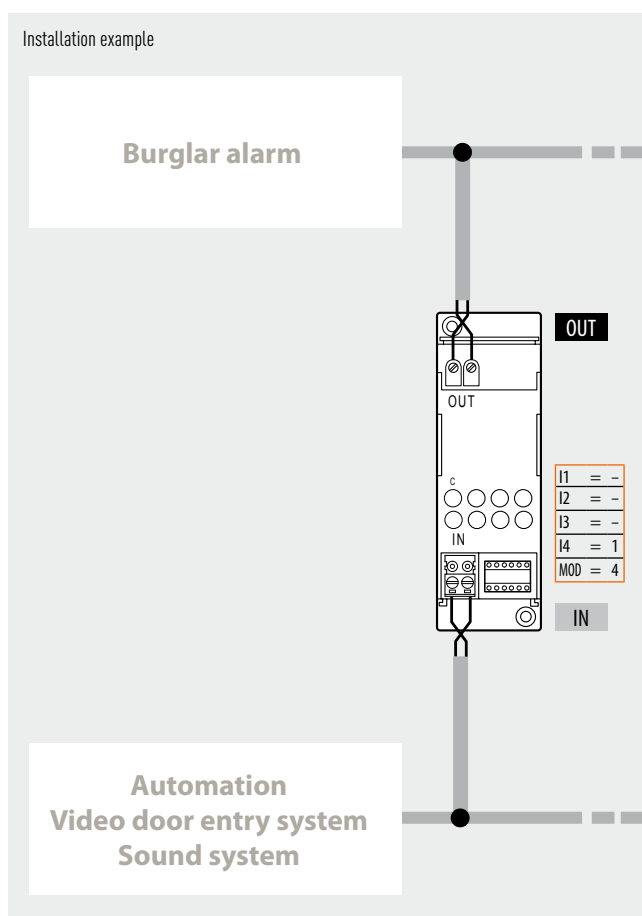
Installation rules:

- On the common sections it is possible to connect contact interfaces, or technical alarms (gas/water leak), up to a total of 9 auxiliary channels; these must be connected to the IN clamp of interface item F422.

(\*) Use a free address of the video handset.

**4) "Interface between burglar alarm and automation/video door entry system/sound system" mode - MOD = 4 configurator -**

This mode can be used to interface the Automation system to the burglar alarm system, to facilitate interaction and exchange of information between the two BUS. Thanks to this function, it is possible to remotely control the automation system using the telephone communicator. The positions identified with I1, I2 and I3 must not be configured, while in the I4 position, the address of the interface (I4 from 1 to 9) must be configured.



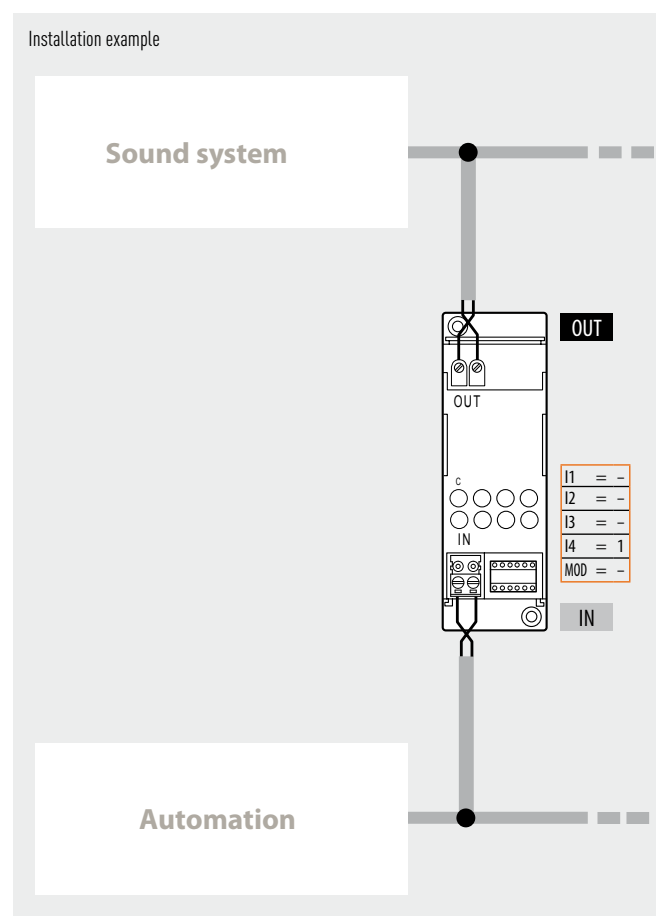
**Installation rules:**

- Configure I4 with configurators from 1 to 9.
- I1, I2 and I3 must not be configured.
- The BUS of the Burglar Alarm system must be connected to the OUT clamp of the interface.
- It is not possible to connect other interfaces to the Burglar Alarm system, to physically extend the BUS, or to increase the maximum number of devices.
- Only one interface may be connected to the Burglar Alarm system. It is therefore not possible to connect together two Automation systems through the Burglar Alarm system.
- Installation of the Automation system actuators within the Burglar Alarm system is not allowed.
- The interface does not use any addresses of the Automation system.

**5) Operating mode "Galvanic separation" - configurator  
MOD = no configuration**

This configuration enables keeping the power supplies of the two buses separate, allowing interfacing of different MY HOME functions (e.g. sound system and automation). In some cases, the use of this interface is necessary (for example when the sound system is installed). In other cases installation alternatives are possible; for example, it will be possible (but not compulsory) to install Temperature Control on a separate BUS, and interface it with Automation using an interface in Galvanic Separation mode.

The positions identified with I1, I2 and I3 must not be configured, while in the I4 position, the address of the interface (I4 from 1 to 9) must be configured.



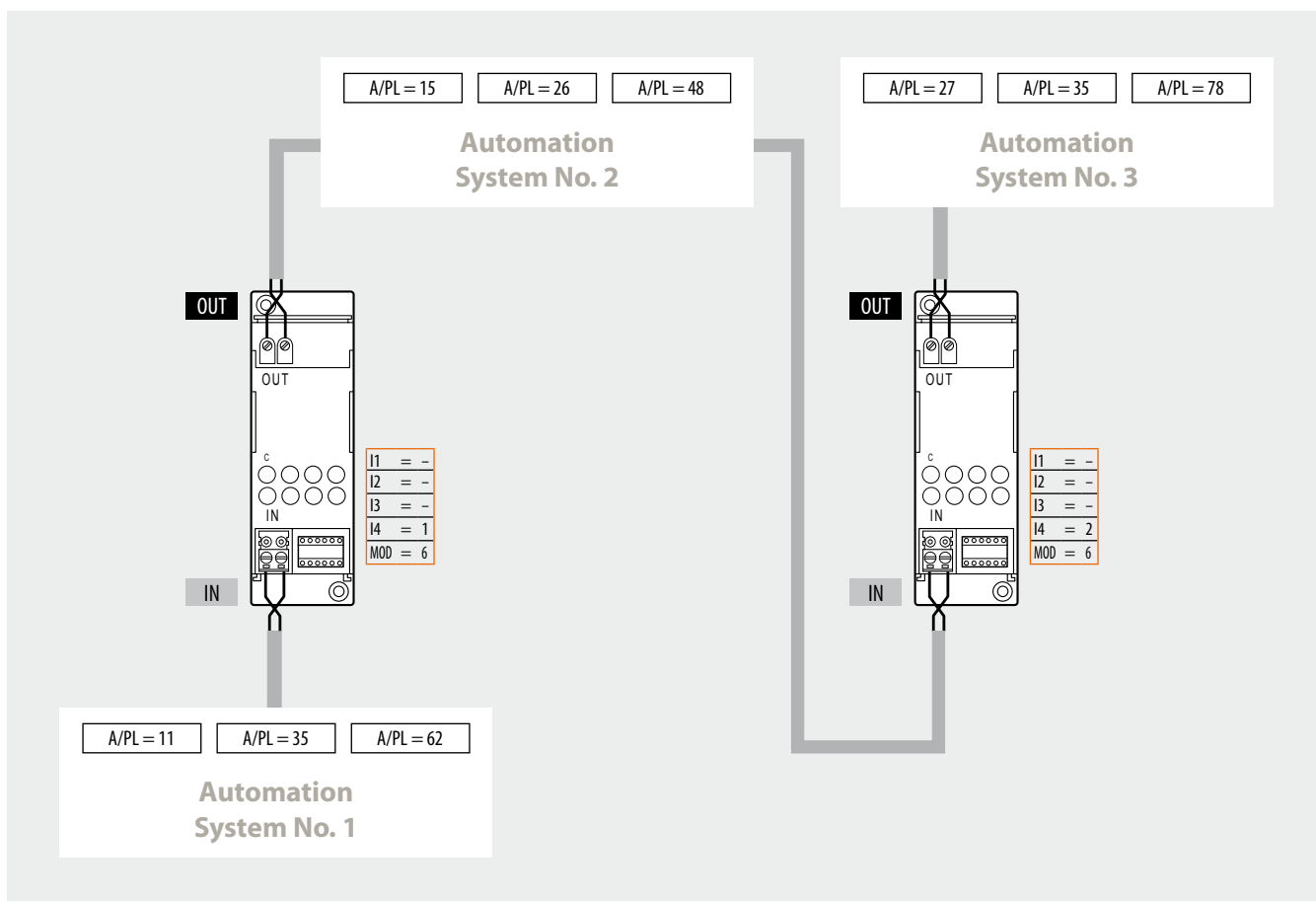
**Installation rules:**

- Configure I4 with configurators from 1 to 9.
- I1, I2 and I3 must not be configured.
- The Automation BUS must be connected to the IN clamp. The other systems must be connected to the OUT clamp (e.g. Sound System).
- It is not possible to connect several Automation systems to the same Sound System.
- Thanks to this mode, using the Web Server A/V it is possible to control a one-family system (a video door entry system and an Automation system, at the most subdivided into lines, following the physical and/or logic expansion mode procedure).
- The interface does not use any addresses of the Automation system.

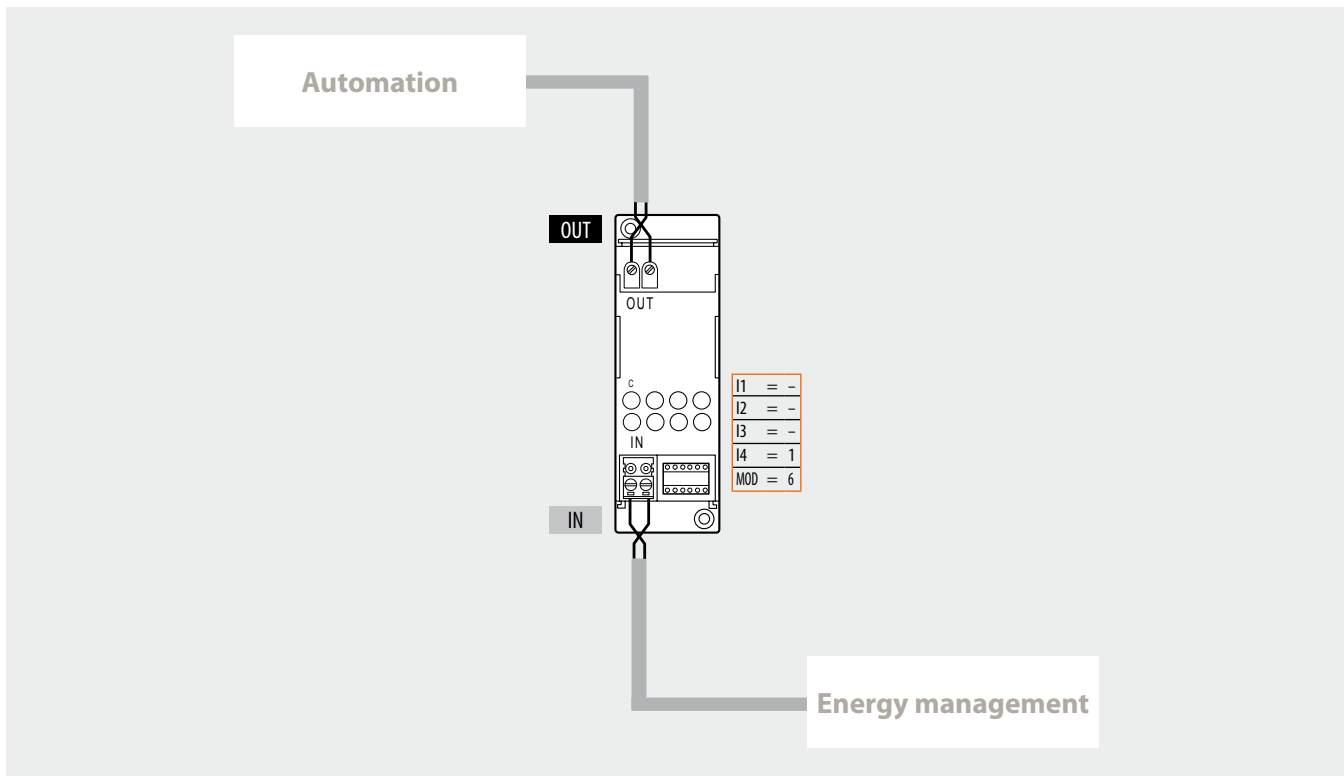
6) "Physical separation" mode - MOD=6 configurator

This mode brings together the features of the "physical expansion" mode and the "galvanic separation" mode. Each system may be connected to both the OUT and the IN clamps of the interface and, differently from what is required for "physical expansion" MOD=1, the addresses of the devices of the two systems may be selected freely.

In view of the above, it will no longer be necessary to indicate the system separation address in positions I3 and I4; therefore, the interface will have to be configured by assigning any address from 01 to 99, including any address already used by actuator devices installed in the connected systems. If several interfaces are used, these must have different addresses.



The use of the interface with this mode may be useful to keep the Automation system and the Temperature control system separate (for example when using independent power supplies).



#### Installation rules:

- Each individual system connected to the IN or OUT clamps of the interface must be powered by its own power supply.
- It is possible to use up to 4 interfaces in MOD=6 for the connection of the Automation and/or Energy Management, and Temperature Control systems to each other.
- In case of cascade connection of several Automation and/or Energy management, and Temperature Control systems, each individual system must be connected to the OUT clamp of one interface and the IN clamp of the other. Therefore, do not connect the system to the two interfaces only using the OUT clamps.
- Do not configure positions I1 and I2.
- In positions I3 and I4, address I3=0 to 9 and I4=1 to 9 of the interface must be specified. This address may also correspond to that of other actuator devices installed in the connected systems. If several interfaces are installed, these must have different addresses.
- The interface does not use any addresses of the Automation system.
- The scenario module and the devices that can be configured in self-learning mode can be connected to any branch of the system (no. 1 or no.2). The memory module must be connected to the system connected to the OUT clamp of the last interface.
- All control devices configure for sending Point-point, Room, Group, and General controls may be connected to any branch of the system (no.1 or no. 2), without limitation, irrespective of their respective addresses in the A and PL positions.
- The above also applies to actuators configured in "slave" operating mode.
- Interface F422 allows Point-point, Group, Room, and General controls to travel through the various systems. It is therefore possible to install, for example, in system no. 2 a control configured as A=1 and PL=5 that will control actuator A=1 and PL=5 installed in system no. 1.

#### Configuration:

For correct operation, the interface must be configured to:

- define its address within the system;
- acquire the address of the devices of the systems connected to the IN and OUT clamps.

Configuration of the interface address:

The device may be configured in 3 different modes:

- using numerical configurators, 0 to 9, in positions I3 and I4;
  - using the Virtual Configurator application as indicated in the software User Manual;
  - using the "self-configuration" procedure as indicated below:
    1. press the interface pushbutton for a few instants; the LED flashes slowly.
    2. press the pushbutton again; the LED flashes quickly and the device starts the self-configuration procedure.
    3. Once the configuration procedure has been completed correctly, the LED comes on steady.
- Repeat this operation for all the interfaces in MOD-6 of the system.

#### Acquisition of the addresses of the connected devices:

This procedure must only be carried out after the configuration of the interface address (or several interfaces, as applicable). It is possible to select one of two modes:

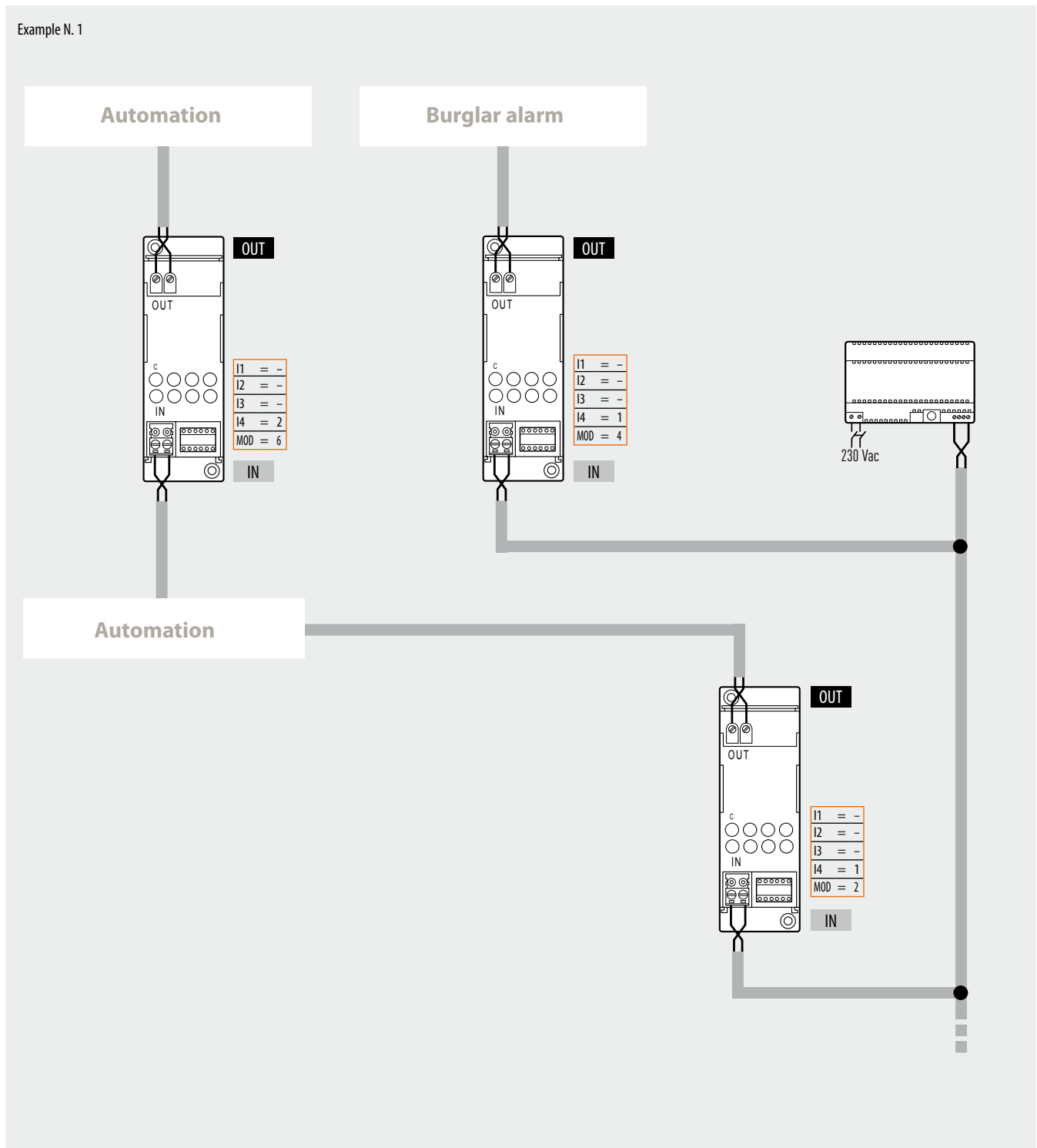
- using the Virtual Configurator application as indicated in the software User Manual;
  - pressing the interface pushbutton for at least 2 seconds. Any other interfaces in MOD=6 installed in the system will automatically acquire the configuration of the devices.
- Before performing this operation check that all system interfaces and actuators have their addresses configured.

**7) Use of interfaces with different modes**

For home automation systems of a certain complexity, several systems may be integrated with interfaces configured in different modes. For example, it is possible to create a system with three interfaces for the connection of two Automation systems and one Burglar alarm system to one single riser.

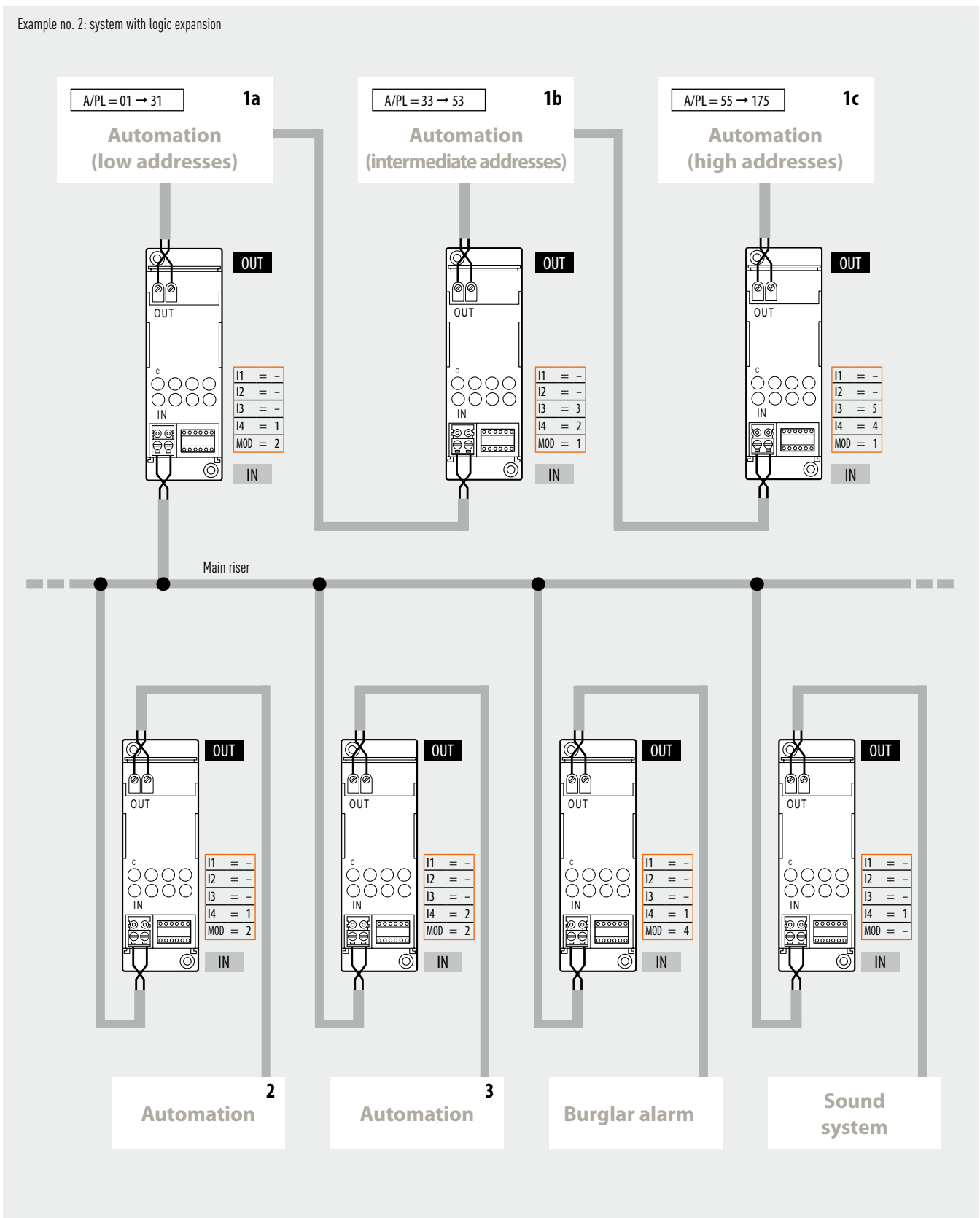
If necessary, each of these can be expanded (physical expansion mode) or interfaced with the Video Door Entry System or the Sound System using other interfaces. For example, in case of a villa consisting of several large floors.

Example N. 1





Example no. 2: system with logic expansion



Example no. 3: system without logic expansion

